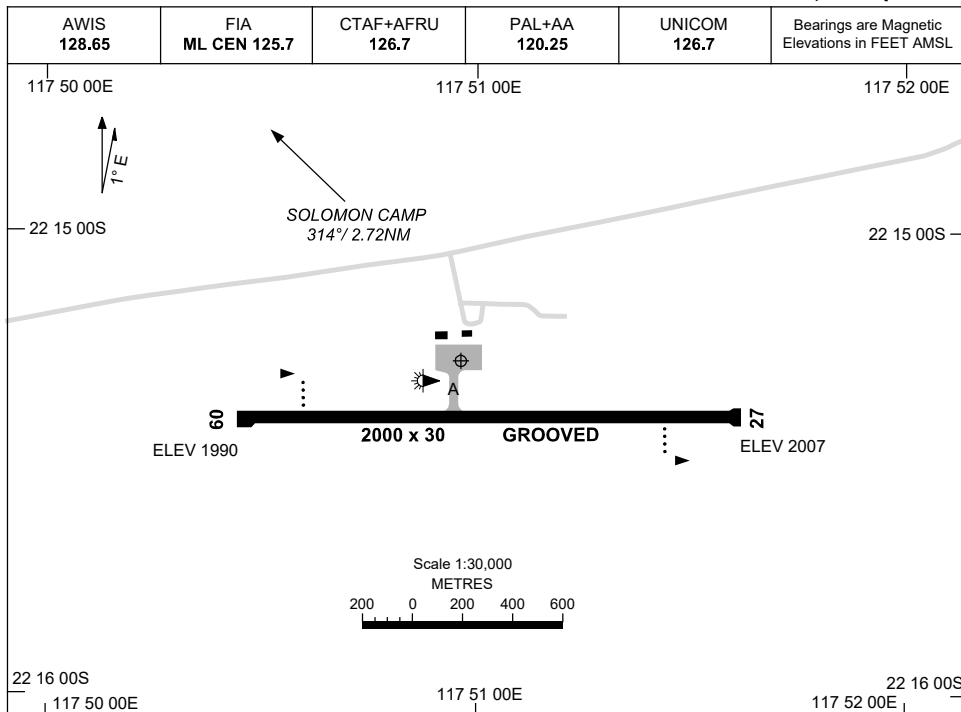


21 MAR 2024

AD ELEV 2008
22 15 17S 117 50 58E

AERODROME CHART
SOLOMON, WA (YSOL)



22 16 00S | 117 50 00E | 117 51 00E | 117 52 00E | 22 16 00S

	AERODROME LIGHTING
RWY	TAXIWAY : BLUE EDGE RL : PAL+AA 120.25 , SDBY (10 SEC) , PTBL 90 MIN PN
09 <small>089</small>	PAPI 3.0° 49FT LIRL PTBL
<small>269</small> 27	PAPI 3.0° 49FT LIRL PTBL

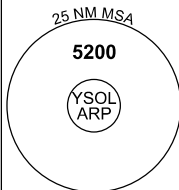
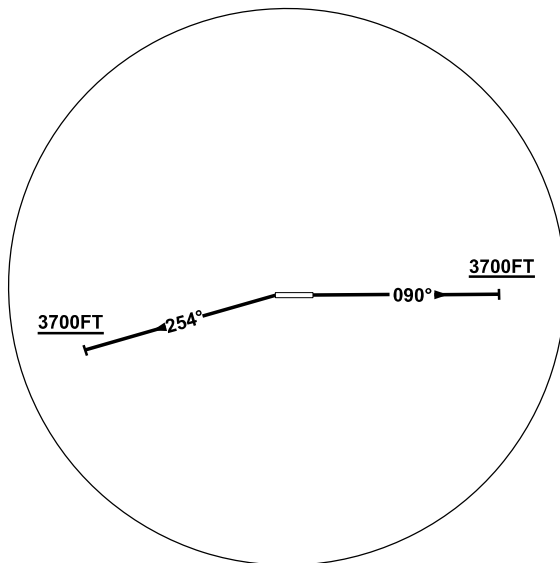
NOTES

1. AFRU 126.7 (YBGD) NOT AVBL ON GROUND. FREQ CONFIRMATION BY YSOL UNICOM ON RECEIPT OF TAXI DEP CALL.
2. FIA FREQ 125.7 AVBL IN CIRCUIT AREA.

24 MAR 2022

AWIS 128.65	FIA ML CEN 125.7	CTAF+AFRU 126.7	PAL+AA 120.25	UNICOM 126.7	Bearings are Magnetic Elevations in FEET AMSL
----------------	---------------------	--------------------	------------------	-----------------	--

NOT TO SCALE



10 NM MSA 5200

SOLOMON ONE DEPARTURE

RWY 09

- GRAD 4.0% to 3700FT thence 3.3%
- Track 090°
- At or above 3700FT turn as required
- Continue to climb to 5200FT
- Intercept flight plan route

RWY 27

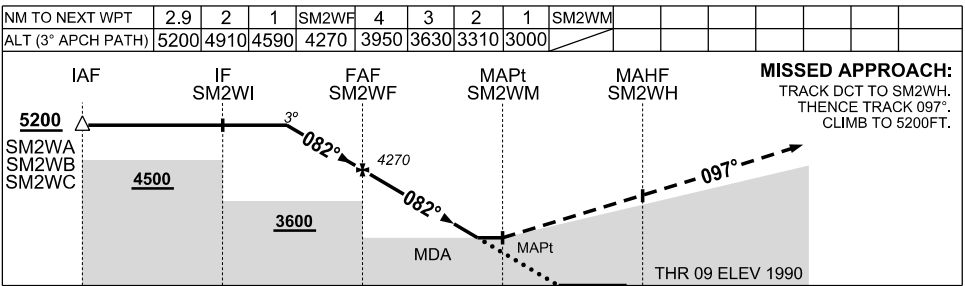
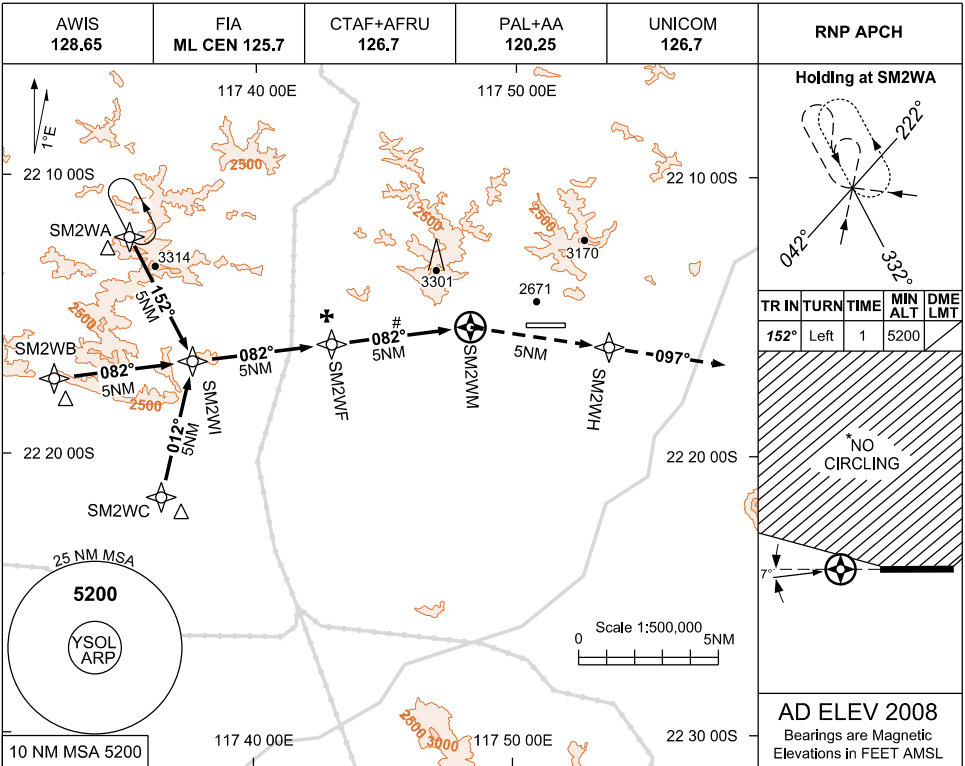
- GRAD 4.0% to 3700FT thence 3.3%
- When passing DER Track 254°
- At or above 3700FT turn as required
- Continue to climb to 5200FT
- Intercept flight plan route

USE QNH

RNP RWY 09

30 NOV 2023

SOLOMON, WA (YSOL)



NOTES

1. MAX IAS:
INITIAL 210KT.
2. AFRU NOT AVBL ON GND
- *3. NO CIRCLING NORTH OF RWY
- #4. ABANDONED DIRT STRIP APPROX 5NM WEST OF YSOL

CATEGORY	A	B	C	D
LNAV	3000 (1010 - 5.0)			NOT AUTHORISED
CIRCLING*	3000 (992 - 2.4)		3610 (1602 - 4.0)	
ALTERNATE	(1492 - 4.4)		(2102 - 6.0)	

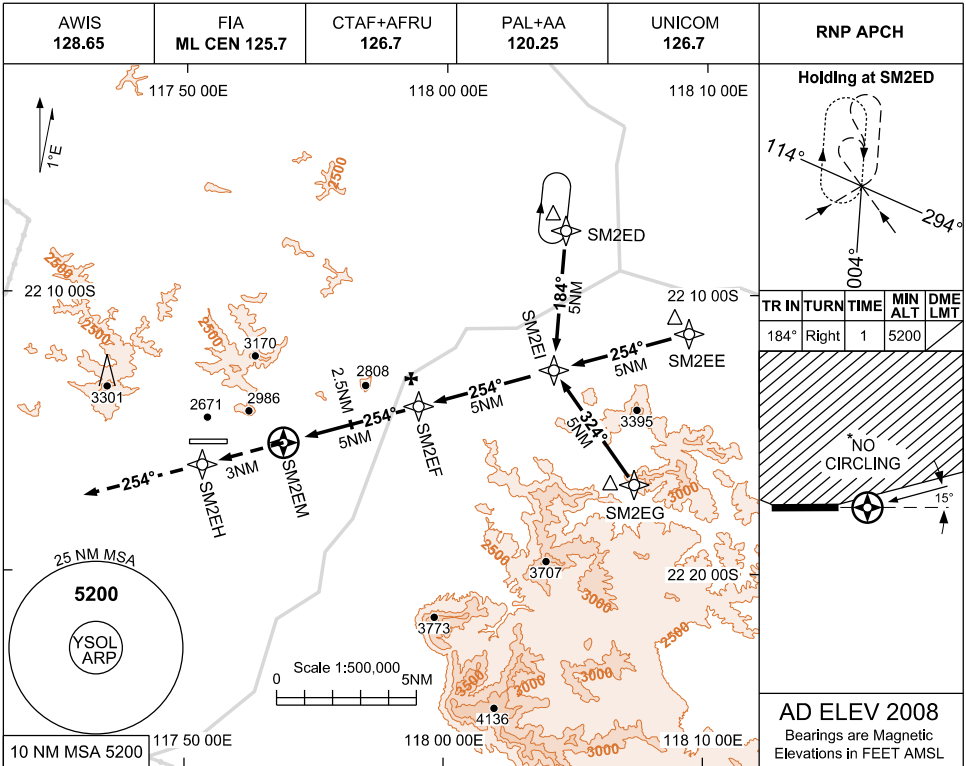
Changes: CHART TITLE, EDITORIAL

SOLGN01-177

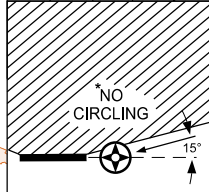
USE QNH

RNP RWY 27
SOLOMON, WA (YSOL)

30 NOV 2023



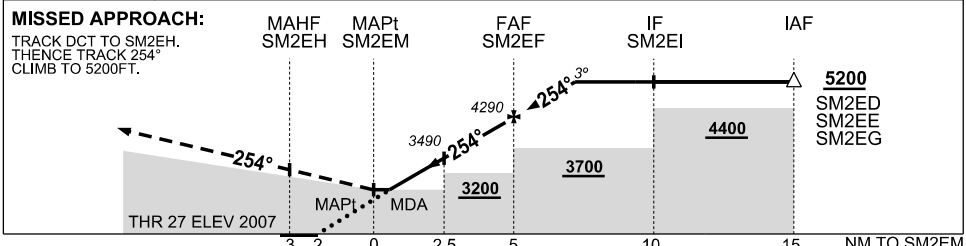
TR IN	TURN	TIME	MIN ALT	DME LMT
184°	Right	1	5200	



AD ELEV 2008

Bearings are Magnetic Elevations in FEET AMSL

NM TO NEXT WPT	SM2EM	0,3	1	2	3	4	SM2EF	1	2	2,9				
ALT (3° APCH PATH)		2800	3010	3330	3650	3970	4290	4610	4920	5200				



CATEGORY	A	B	C	D	NOTES
LNAV	2800 (792 - 4.5)			NOT AUTHORISED	1. MAX IAS: INITIAL 210KTS 2. AFRU NOT AVBL ON GND *3. NO CIRCLING NORTH OF RWY
CIRCLING*	3000 (992 - 2.4)		3610 (1602 - 4.0)		
ALTERNATE	(1492 - 4.4)		(2102 - 6.0)		

Changes: CHART TITLE, EDITORIAL

SOLGN02-177