

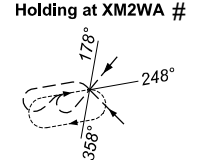
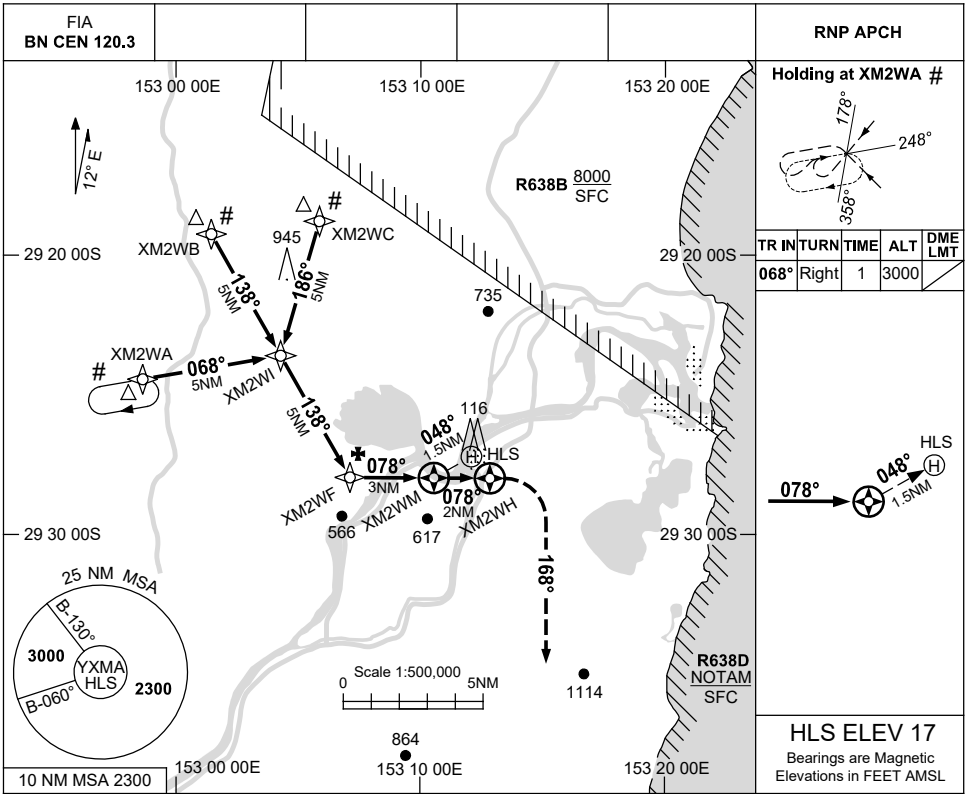
FOR CASA APPROVED OPERATORS ONLY

USE QNH

RNP 078

23 MAR 2023

MACLEAN HOSPITAL, NSW (YXMA)

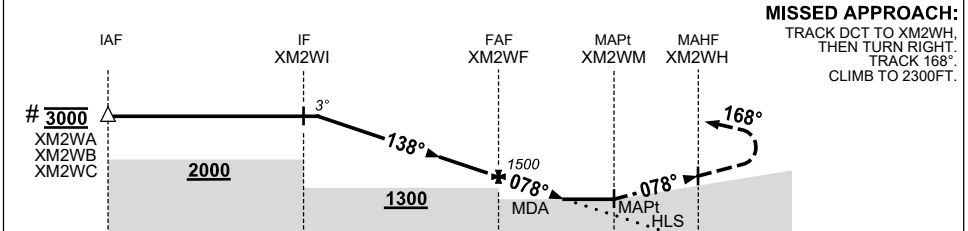


| TR | INTURN | TIME | ALT | DME |
|------|--------|------|------|-----|
| 068° | Right | 1 | 3000 | |



HLS ELEV 17
Bearings are Magnetic
Elevations in FEET AMSL

| NM TO NEXT WPT | 4.7 | 4 | 3 | 2 | 1 | XM2WF | 2 | 1.2 | XM2WM |
|--------------------|------|------|------|------|------|-------|------|-----|-------|
| ALT (3° APCH PATH) | 3000 | 2770 | 2460 | 2140 | 1820 | 1500 | 1180 | 940 | |



MISSED APPROACH:
TRACK DCT TO XM2WH.
THEN TURN RIGHT.
TRACK 168°.
CLIMB TO 2300FT.

| NM TO XM2WM | 13 | 8 | 3 | 0 | 1.5 | 2 |
|-------------|----|---|---|---|-----|---|
|-------------|----|---|---|---|-----|---|

- NOTES**
- CAUTION:** PROCEDURE IN CLOSE PROXIMITY TO R638B & R638D.
 - PROC IS OVERLAID BY YGFN RNP RWY 18. PRESCRIBED MAXIMUM ALTITUDES ENSURE SEPARATION

| CATEGORY | H |
|----------------|----------------|
| LNAV (NON VAA) | 940 (923-5.0) |
| CIRCLING | NOT APPLICABLE |
| ALTERNATE | NOT APPLICABLE |

Changes: WPT NAMING CONVENTION, Editorial.

XMAGN01-174

FOR CASA APPROVED OPERATORS ONLY