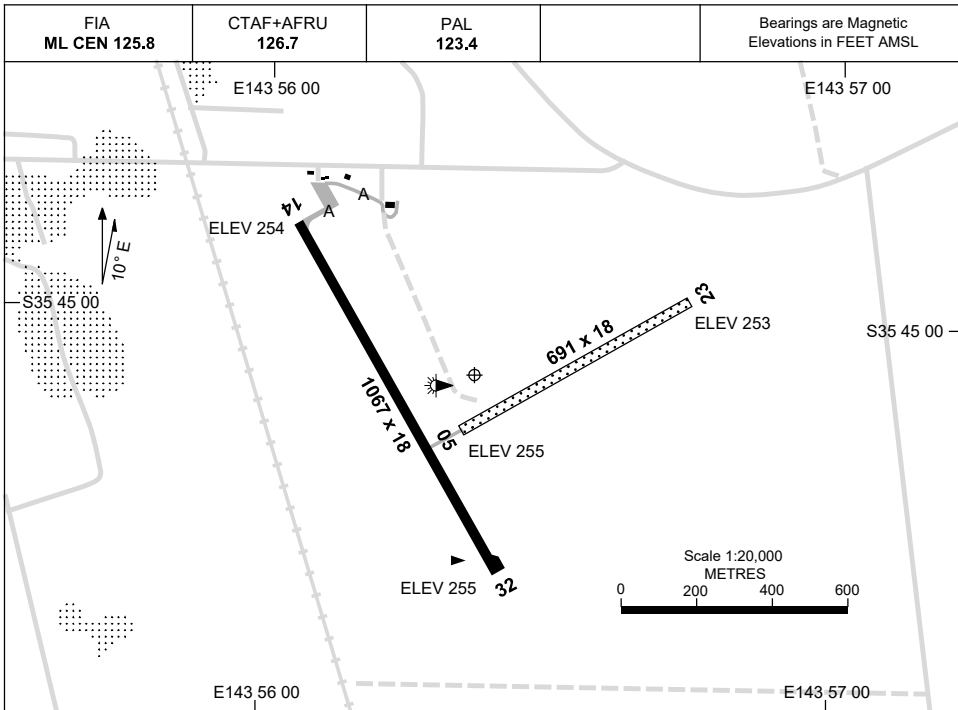


7 SEP 2023

AD ELEV 255  
S35 45 05 E143 56 22

AERODROME CHART  
**KERANG, VIC (YKER)**



	<b>AERODROME LIGHTING</b>
<b>RWY</b>	TAXIWAY : BLUE EDGE RL : PAL 123.4 , SDBY (30 SEC)
<b>14</b> <sup>139</sup> <sub>319</sub> <b>32</b>	LIRL LIRL
<b>05</b> <sup>049</sup> <sub>229</sub> <b>23</b>	NIL NIL

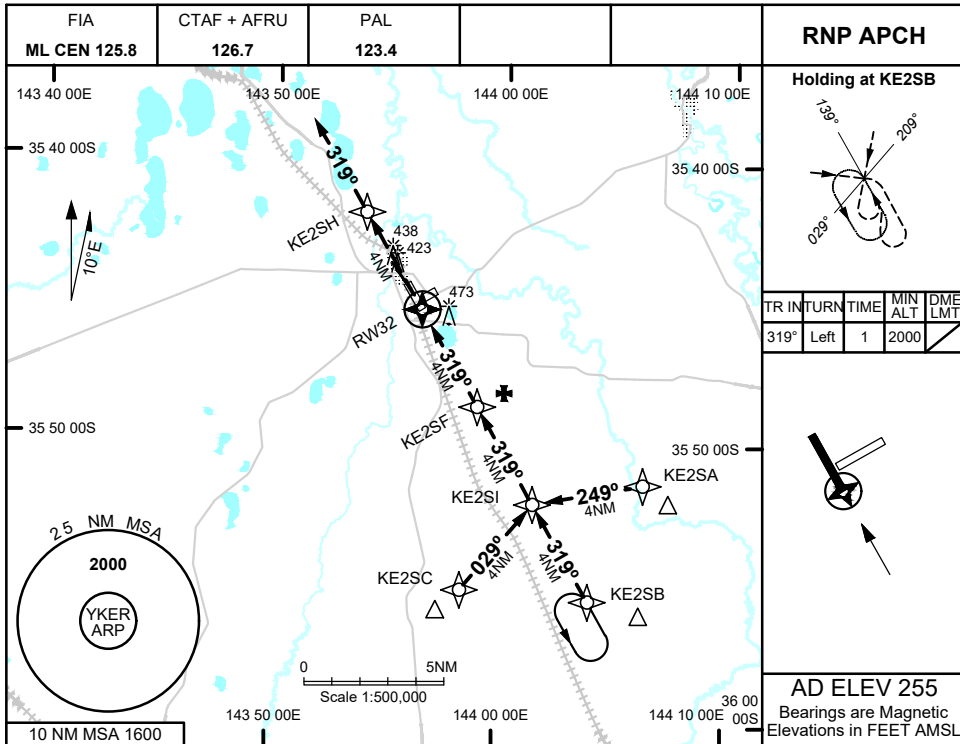
**NOTES**

1. FIA FREQ 125.8 AVBL 2000FT.

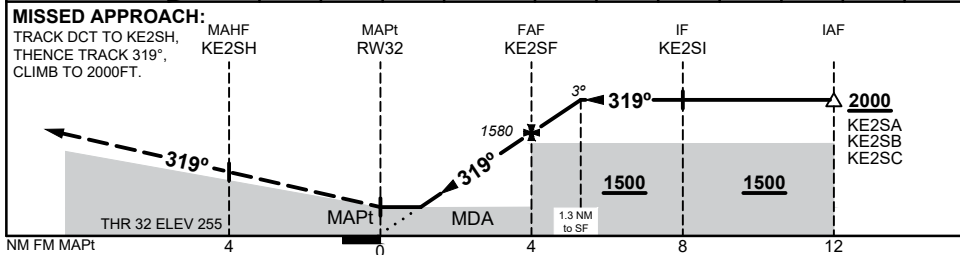
Changes: TWY LIGHTING, SDBY SWITCHOVER TIME, TWY A, Editorial.

KERAD01-176

15 JUN 2023



NM TO NEXT WPT	RW32	1.5	2	3	KE2SF	1	1.3			
ALT (3° APCH PATH)		780	940	1260	1580	1900	2000			



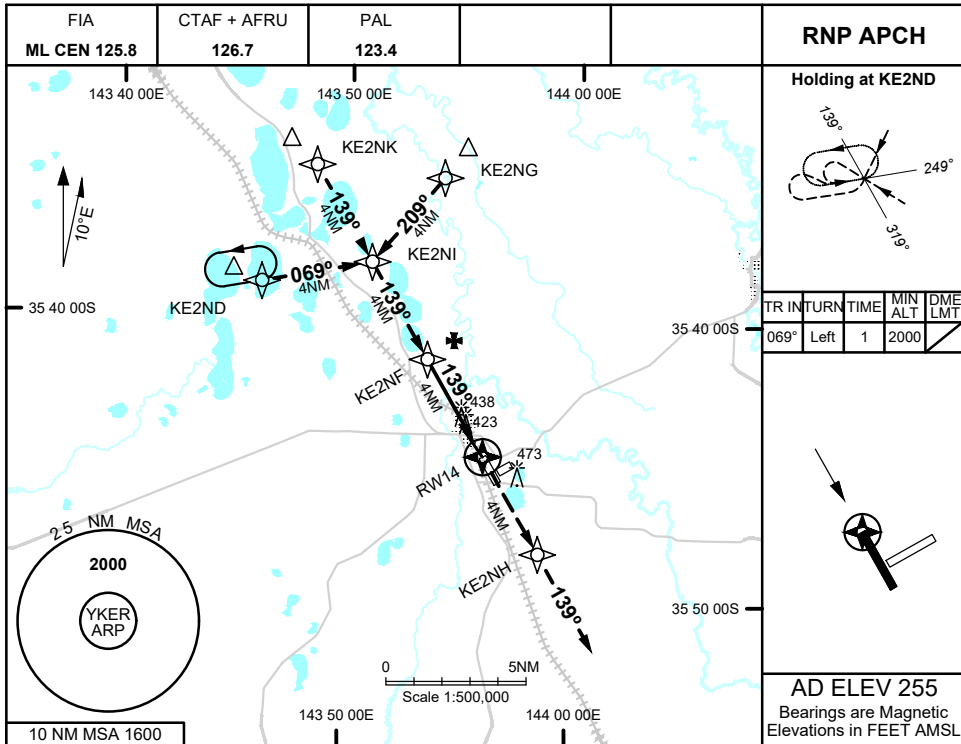
CATEGORY	A	B	C	D
LNAV	<b>780</b> (525 - 3.0)		NOT APPLICABLE	
CIRCLING	<b>870</b> (615 - 2.4)			
ALTERNATE	(1115 - 4.4)			

Changes: CHART TITLE, PBN SPECIFICATION BOX, Editorial

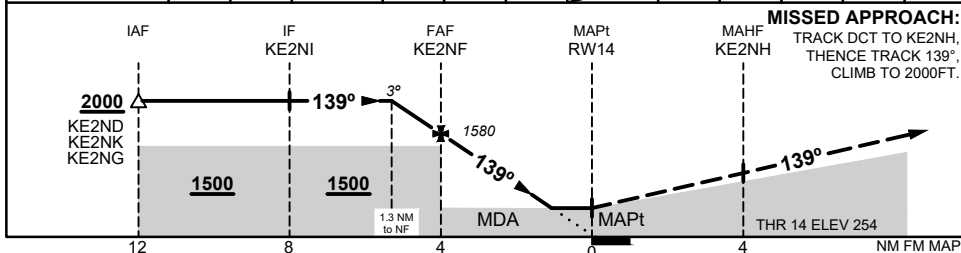
KERGN01-175



15 JUN 2023



NM TO NEXT WPT	1.3	1	KE2NF	3	2	1.5	RW14				
ALT (3° APCH PATH)	2000	1900	1580	1260	940	790					



CATEGORY	A	B	C	D
LNAV	790 (535 - 3.0)		NOT APPLICABLE	
CIRCLING	870 (615 - 2.4)			
ALTERNATE	(1115 - 4.4)			

Changes: CHART TITLE, PBN SPECIFICATION BOX, Editorial

KERGN02-175

