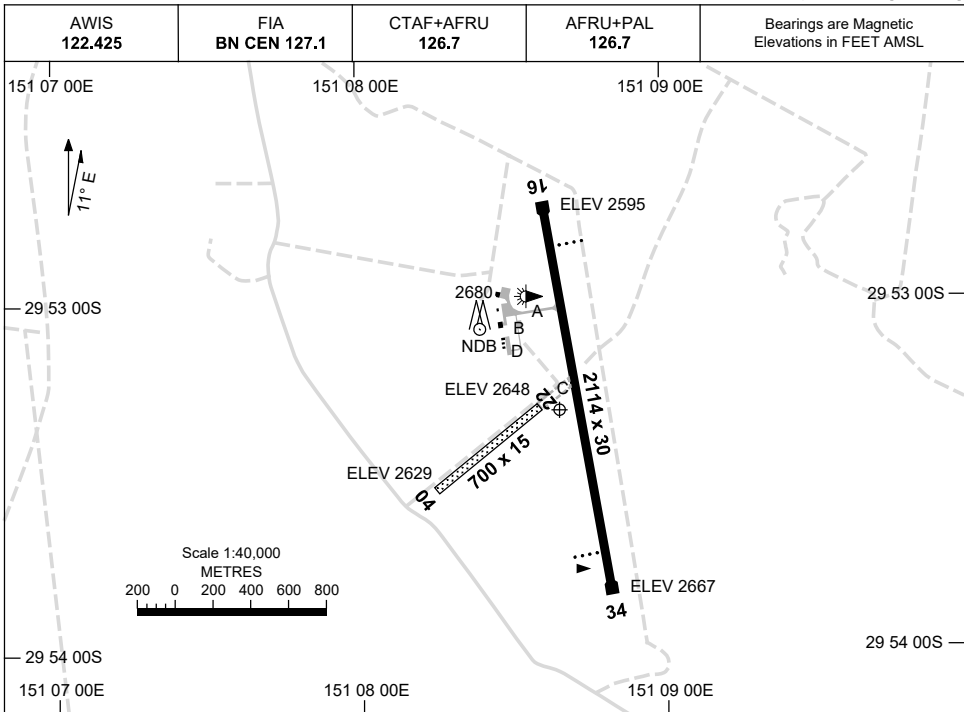


8 SEP 2022

AD ELEV 2667  
29 53 18S 151 08 39E

AERODROME CHART  
**INVERELL, NSW (YIVL)**



	<b>AERODROME LIGHTING</b>
<b>RWY</b>	TAXIWAY : BLUE EDGE TWY A RL : AFRU+PAL 126.7 , SDBY (15 SEC)
<b>16</b> <small>159</small>	PAPI 3.0° 41FT LIRL
<small>339</small> <b>34</b>	PAPI 3.0° 41FT LIRL
<b>04</b> <small>040</small>	NIL
<small>220</small> <b>22</b>	NIL

**NOTES**

- FIA 127.1 AVBL IN CIRCUIT AREA.
- AWIS RQ ONE SECOND PULSE TO ACTIVATE.

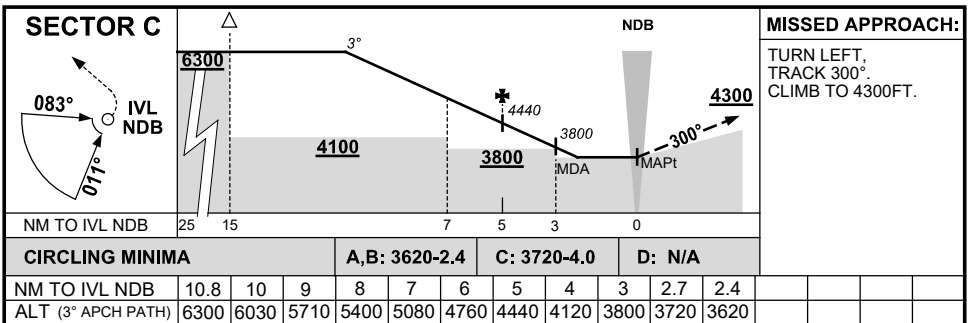
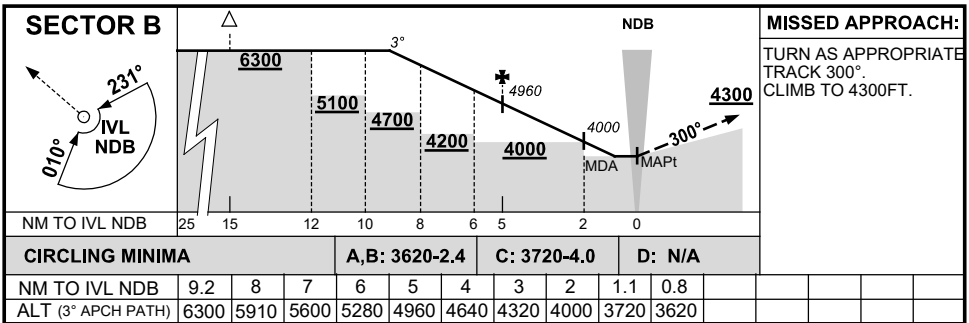
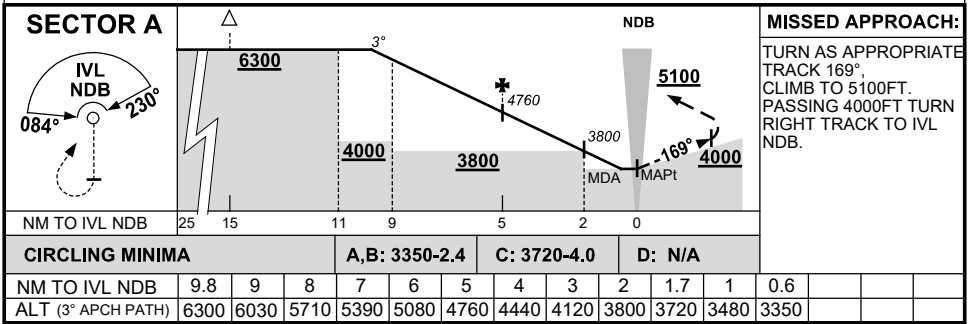
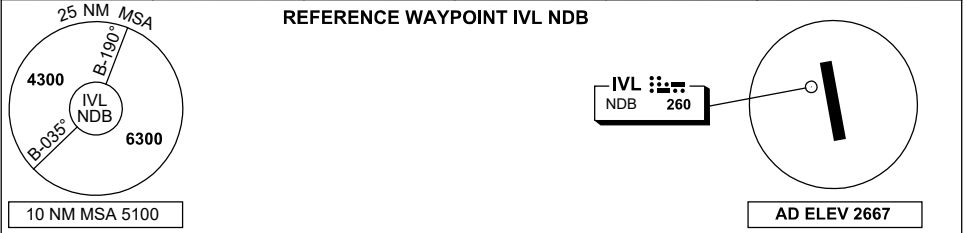
Changes: NOTES.

IVLAD01-172

# GNSS ARRIVAL PROCEDURES INVERELL, NSW (YIVL)

16 JUN 2022

AWIS 122.425	FIA BN CEN 127.1	CTAF+AFRU 126.7	AFRU+PAL 126.7		Bearings are Magnetic Elevations in FEET AMSL
-----------------	---------------------	--------------------	-------------------	--	--



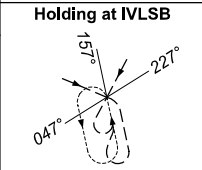
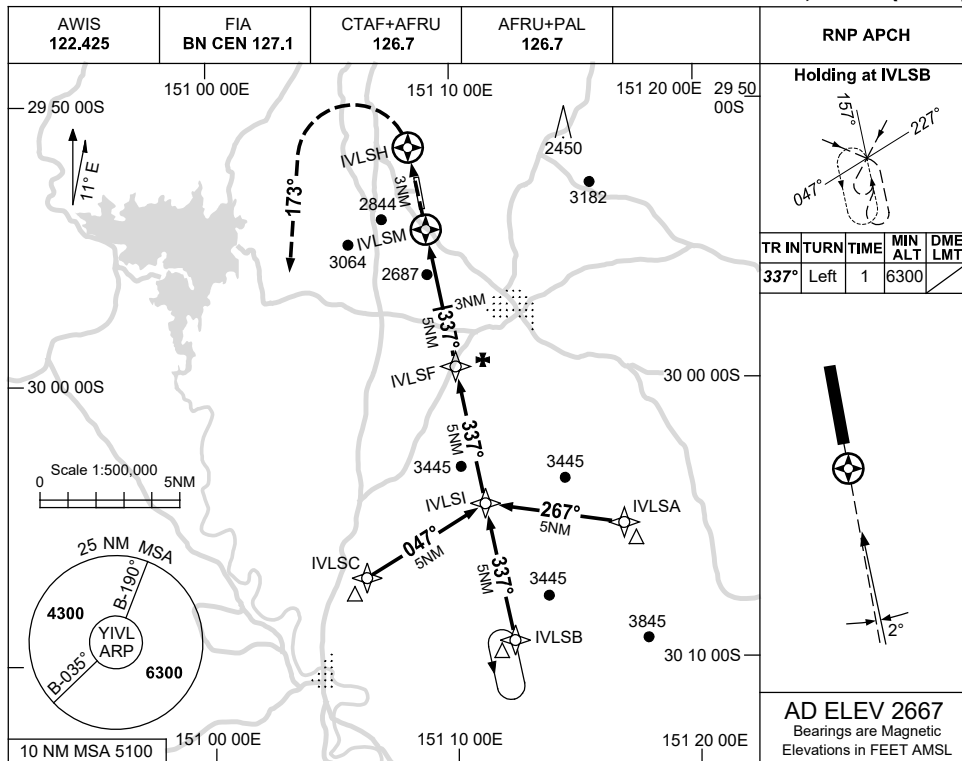
Changes: AWIS.

IVLDG01-171

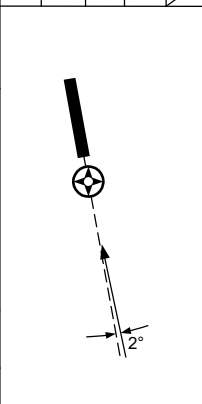
USE QNH

RNP RWY 34  
**INVERELL, NSW (YIVL)**

16 JUN 2022

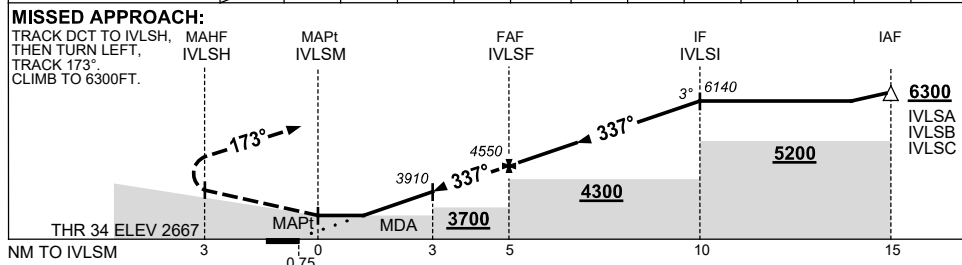


TR	IN	TURN	TIME	MIN ALT	DME LMT
337°	Left	1		6300	



**AD ELEV 2667**  
 Bearings are Magnetic  
 Elevations in FEET AMSL

NM TO NEXT WPT	IVLSM	1	2	3	4	IVLSF	1	2	3	4	IVLSI		
ALT (3° APCH PATH)		3270	3590	3910	4230	4550	4870	5190	5510	5820	6140		



**NOTES**

CATEGORY	A	B	C	D
LNAV	3270 (603-3.4)			NOT APPLICABLE
CIRCLING	3350 (683-2.4)		3720(1053-4.0)	
ALTERNATE	(1183-4.4)		(1553-6.0)	

1. MAX IAS:  
 INITIAL : 210KT.

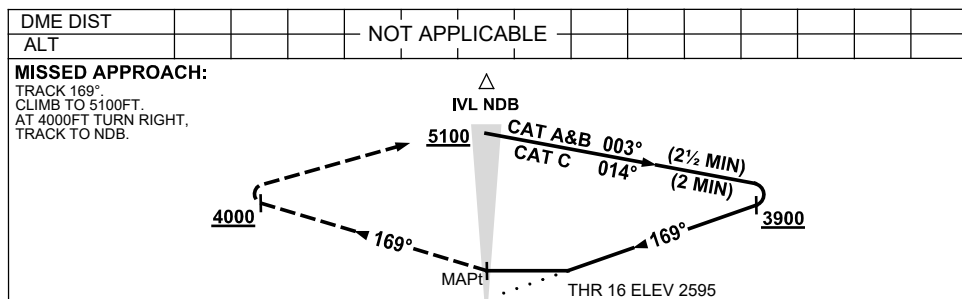
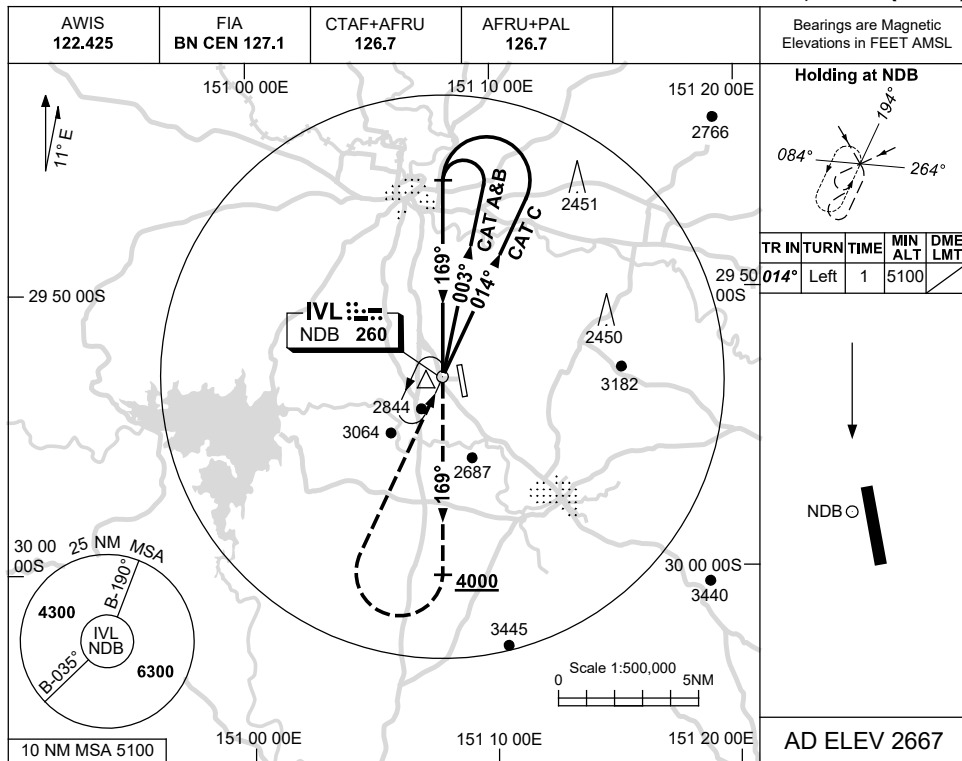
Changes: AWIS.

IVLGN01-171

USE QNH

NDB RWY 16  
**INVERELL, NSW (YIVL)**

16 JUN 2022



**NOTES**

CATEGORY	A	B	C	D
S-I NDB	3220 (625-3.6)			NOT APPLICABLE
CIRCLING	3350 (683-2.4)	3720 (1053-4.0)		
ALTERNATE	(1183-4.4)	(1553-6.0)		

1. MAX IAS:  
 HOLDING: 210KT.  
 INITIAL : 210KT.

Changes: AWIS.

IVLNB01-171