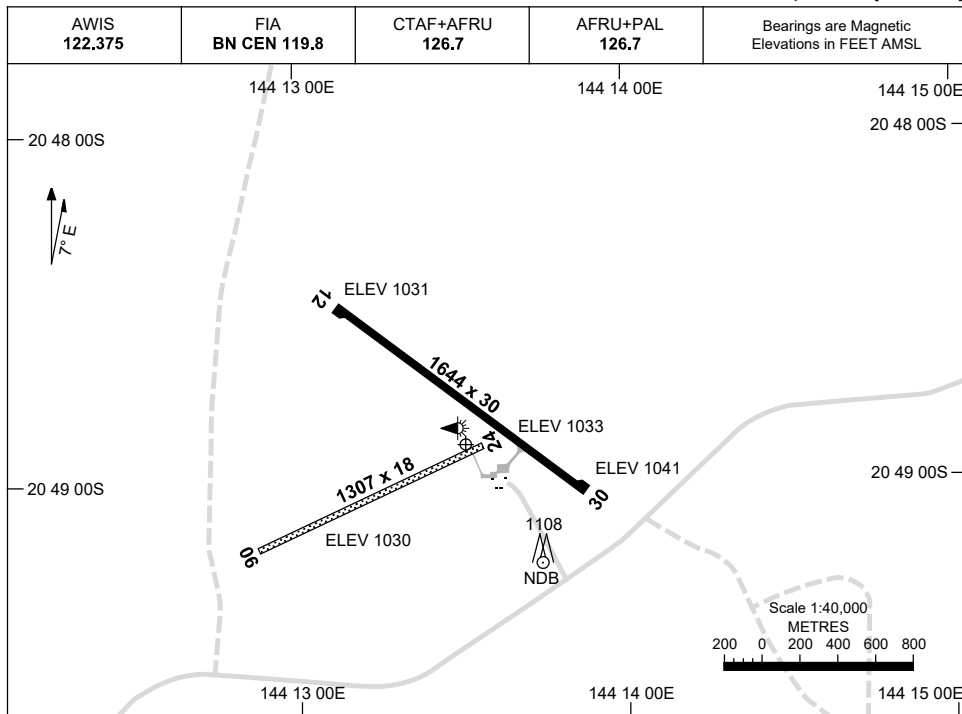


1 DEC 2022

AD ELEV 1043  
20 48 54S 144 13 31E

AERODROME CHART  
**HUGHENDEN, QLD (YHUG)**



<b>RWY</b>	<b>AERODROME LIGHTING</b>	
	RL : AFRU+PAL 126.7 , SDBY (15 SEC)	
<b>12</b> <sup>121</sup>	LIRL	
<sup>301</sup> <b>30</b>	LIRL	
<b>06</b> <sup>059</sup>	NIL	
<sup>239</sup> <b>24</b>	NIL	

**NOTES**

1. AWIS RQ ONE-SECOND TRANSMIT PULSE TO ACTIVATE.
2. FIA FREQ 119.8 AVBL CIRCUIT AREA.

Changes: SDBY SWITCH TIME.

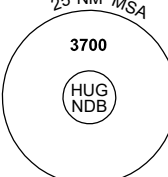
HUGAD01-173

# GNSS ARRIVAL PROCEDURES HUGHENDEN, QLD (YHUG)

24 MAR 2022

AWIS 122.375	FIA BN CEN 119.8	CTAF+AFRU 126.7	AFRU+PAL 126.7		Bearings are Magnetic Elevations in FEET AMSL
-----------------	---------------------	--------------------	-------------------	--	--

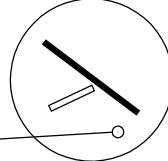
**REFERENCE WAYPOINT HUG NDB**



25 NM MSA

3700

HUG NDB

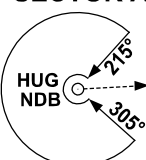


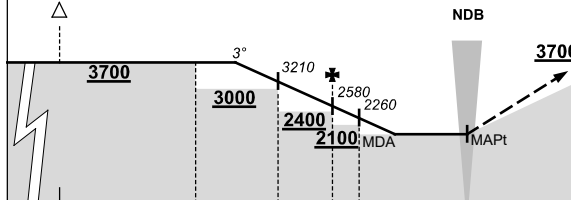
10 NM MSA 3200

**HUG** **NDB 371**

AD ELEV 1043

**SECTOR A**

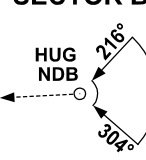


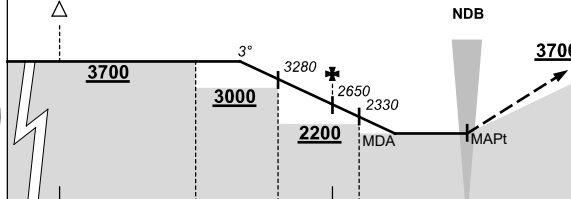


**MISSED APPROACH:**  
CLIMB ON TRACK  
TO 3700FT.

NM TO HUG NDB	25	15		10	7	5	4	0						
<b>CIRCLING MINIMA</b>	A,B: 1830-2.4			C: 1990-4.0		D: N/A								
NM TO HUG NDB	8.5	8	7	6	5	4	3.2	2.7						
ALT (3° APCH PATH)	3700	3530	3210	2900	2580	2260	1990	1830						

**SECTOR B**





**MISSED APPROACH:**  
CLIMB ON TRACK  
TO 3700FT.

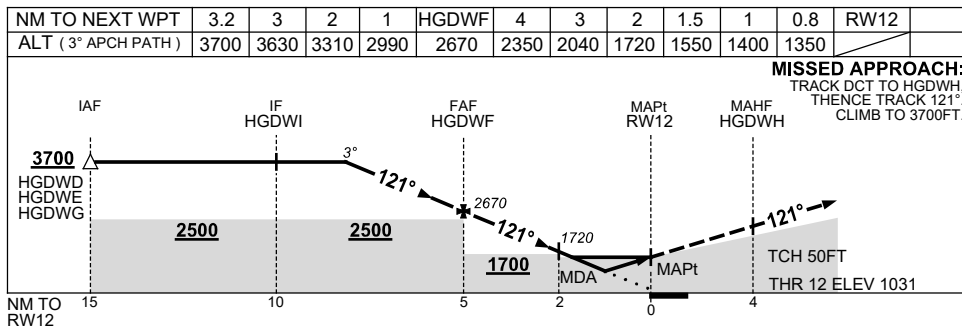
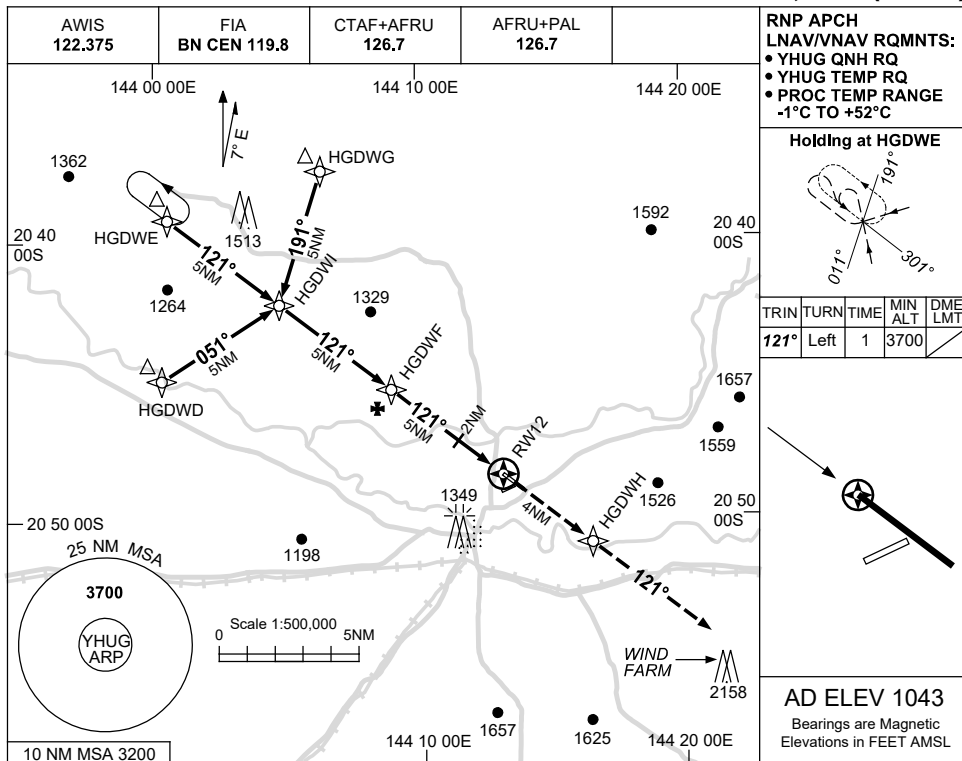
NM TO HUG NDB	25	15		10	7	5	4	0						
<b>CIRCLING MINIMA</b>	A,B: 1900-2.4			C: 1990-4.0		D: N/A								
NM TO HUG NDB	8.3	8	7	6	5	4	3	2.9	2.7					
ALT (3° APCH PATH)	3700	3600	3280	2970	2650	2330	2010	1990	1900					

USE QNH

RNP RWY 12

HUGHENDEN, QLD (YHUG)

8 SEP 2022



**NOTES**

CATEGORY	A	B	C	D
LNAV/VNAV		1350 (319-1.8)		NOT APPLICABLE
LNAV		1550 (519-2.9)		
CIRCLING	1830 (787-2.4)		1990 (947-4.0)	
ALTERNATE		(1287-4.4)	(1447-6.0)	

1. MAX IAS:  
INITIAL : 210KT.

Changes: LNAV/VNAV MINIMA SHADED BACKGROUND REMOVED.

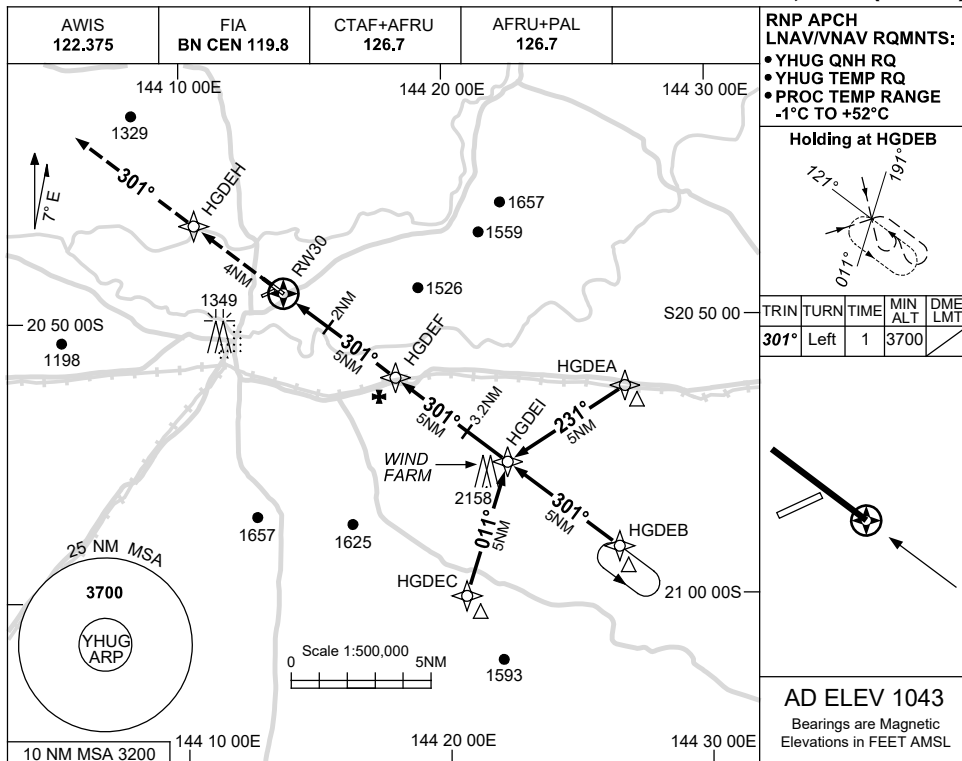
HUGGN01-172

USE QNH

RNP RWY 30

HUGHENDEN, QLD (YHUG)

8 SEP 2022



**RNP APCH LNAV/VNAV RQMNTS:**

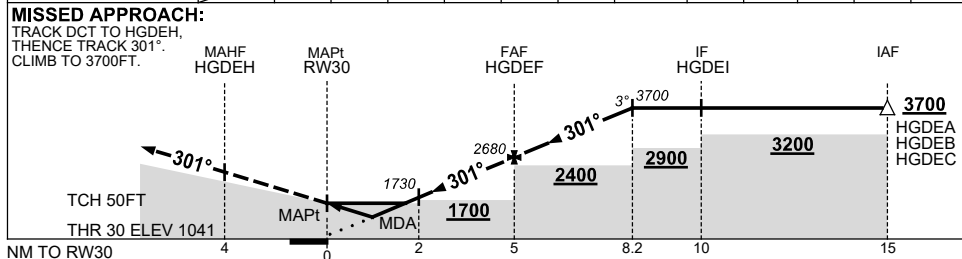
- YHUG QNH RQ
- YHUG TEMP RQ
- PROC TEMP RANGE -1°C TO +52°C

**Holding at HGDEB**

TRIN	TURN	TIME	MIN ALT	DME LMT
301°	Left	1	3700	

**AD ELEV 1043**  
Bearings are Magnetic  
Elevations in FEET AMSL

NM TO NEXT WPT	RW30	0.9	1	1.5	2	3	4	HGDEF	1	2	3	3.2
ALT (3° APCH PATH)		1390	1410	1580	1730	2050	2360	2680	3000	3320	3640	3700



**NOTES**

CATEGORY	A	B	C	D
LNAV/VNAV		<b>1390</b> (349-1.9)		NOT APPLICABLE
LNAV		<b>1580</b> (537-3.0)		
CIRCLING	<b>1830</b> (787-2.4)		<b>1990</b> (947-4.0)	
ALTERNATE	(1287-4.4)		(1447-6.0)	

1. MAX IAS: INITIAL : 210KT.

Changes: LNAV/VNAV MINIMA SHADED BACKGROUND REMOVED.

HUGGN02-172

