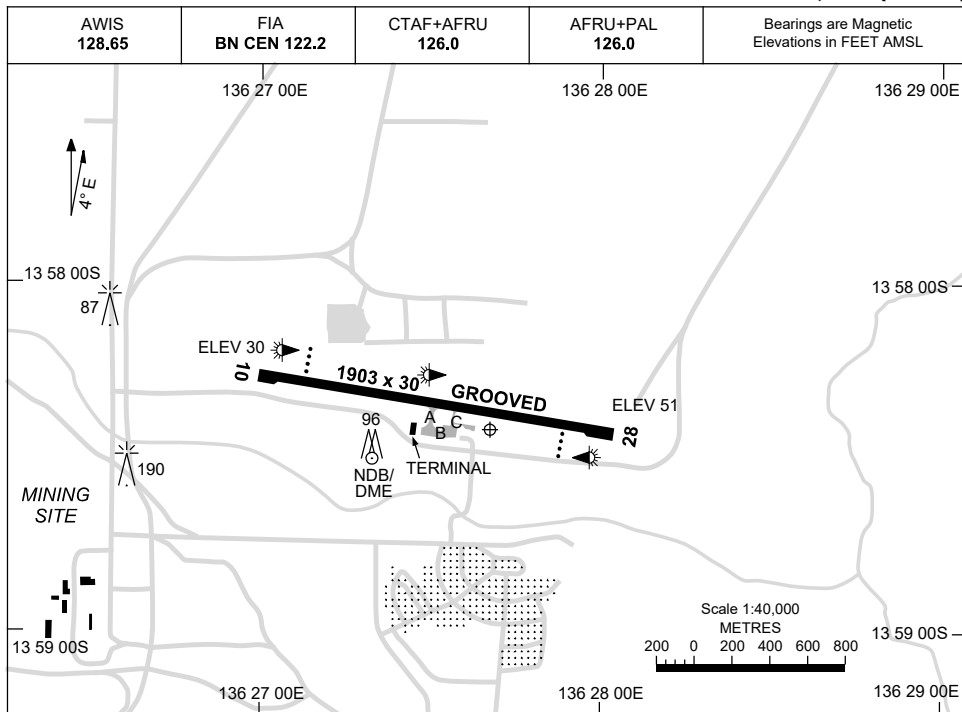


23 MAR 2023

AD ELEV 53
13 58 24S 136 27 39E

AERODROME CHART
GROOTE EYLANDT, NT (YGTE)



	AERODROME LIGHTING
RWY	RL : AFRU+PAL 126.0 , SDBY (30 SEC) , PTBL (90 MIN PN)
10 <small>095</small>	PAPI 3.0° 41FT LIRL PTBL
<small>275</small> 28	PAPI 3.0° 41FT LIRL PTBL

NOTES

1. AWIS ACTIVATED BY 1 SEC TRANSMISSION.

Changes: RWY LEN.

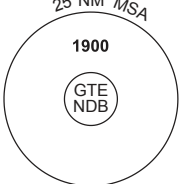
GTEAD01-174

DME or GNSS ARRIVAL PROCEDURES GROOTE EYLANDT, NT (YGTE)

15 AUG 2019

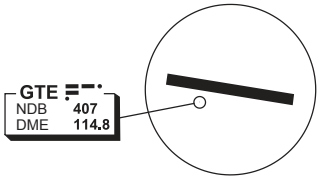
AWIS 128.65	FIA BN CEN 122.2	CTAF+AFRU 126.0	AFRU+PAL 126.0		Bearings are Magnetic Elevations in FEET AMSL
-----------------------	----------------------------	---------------------------	--------------------------	--	--

25 NM MSA



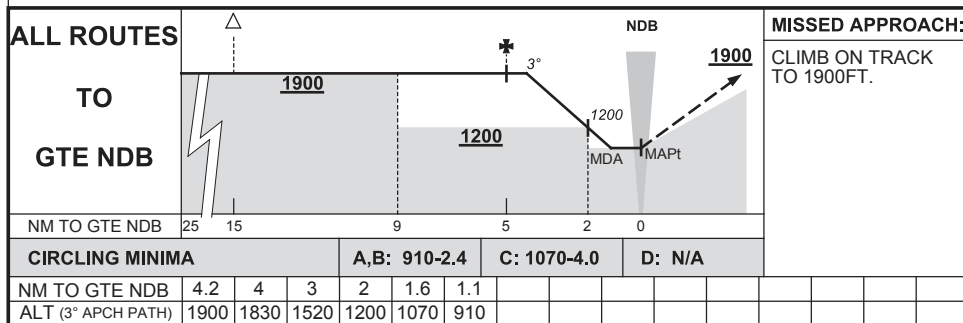
10 NM MSA 1900

**DME USING GTE DME
REFERENCE WAYPOINT GTE NDB**



GTE
NDB 407
DME 114.8

AD ELEV 53

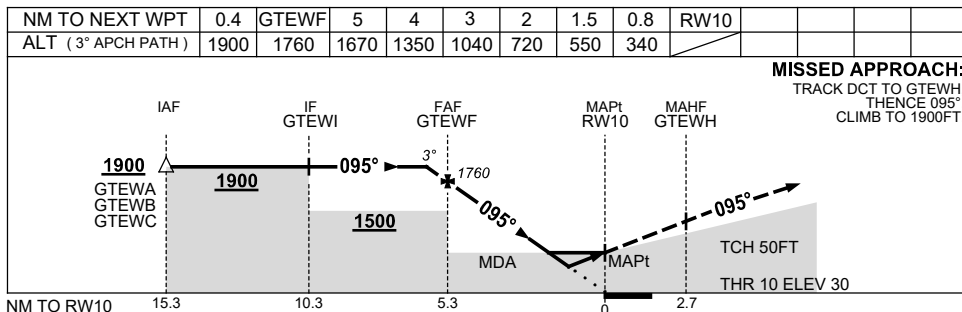
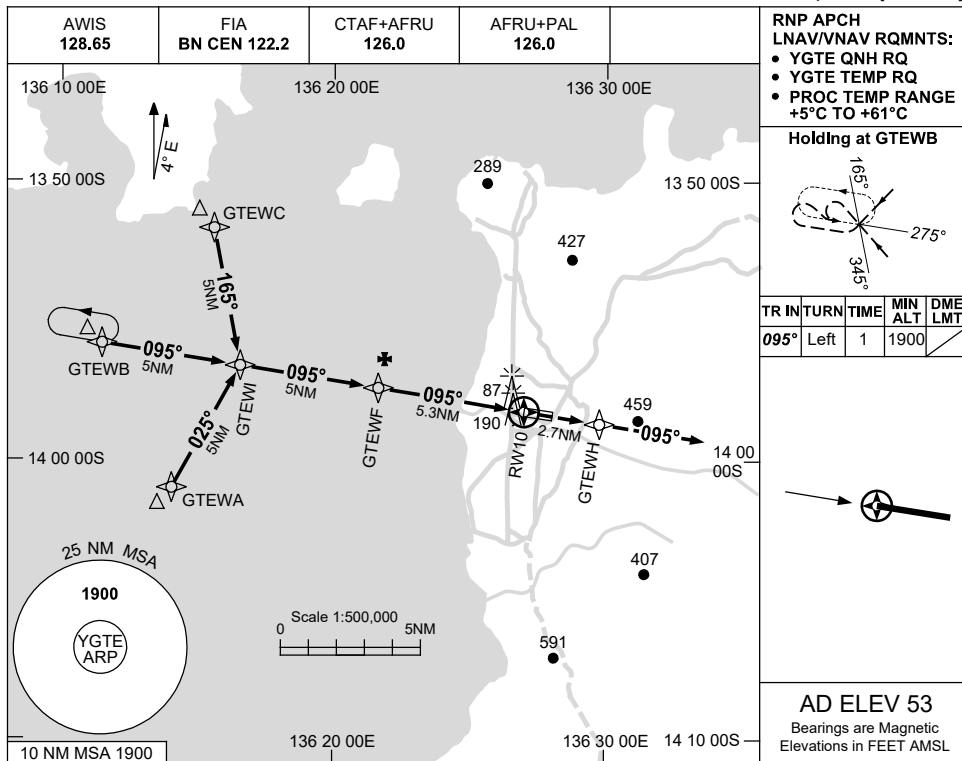


USE QNH

RNP RWY 10

8 SEP 2022

GROOTE EYLANDT, NT (YGTE)



NOTES

CATEGORY	A	B	C	D
LNAV/VNAV		340 (310-1.7)		NOT APPLICABLE
LNAV		550 (520-2.9)		
CIRCLING	910 (857-2.4)		1070 (1017-4.0)	
ALTERNATE	(1357-4.4)		(1517-6.0)	

1. MAX IAS:
INITIAL : 210KT.

Changes: CHART TITLE, PBN SPECIFICATION BOX.

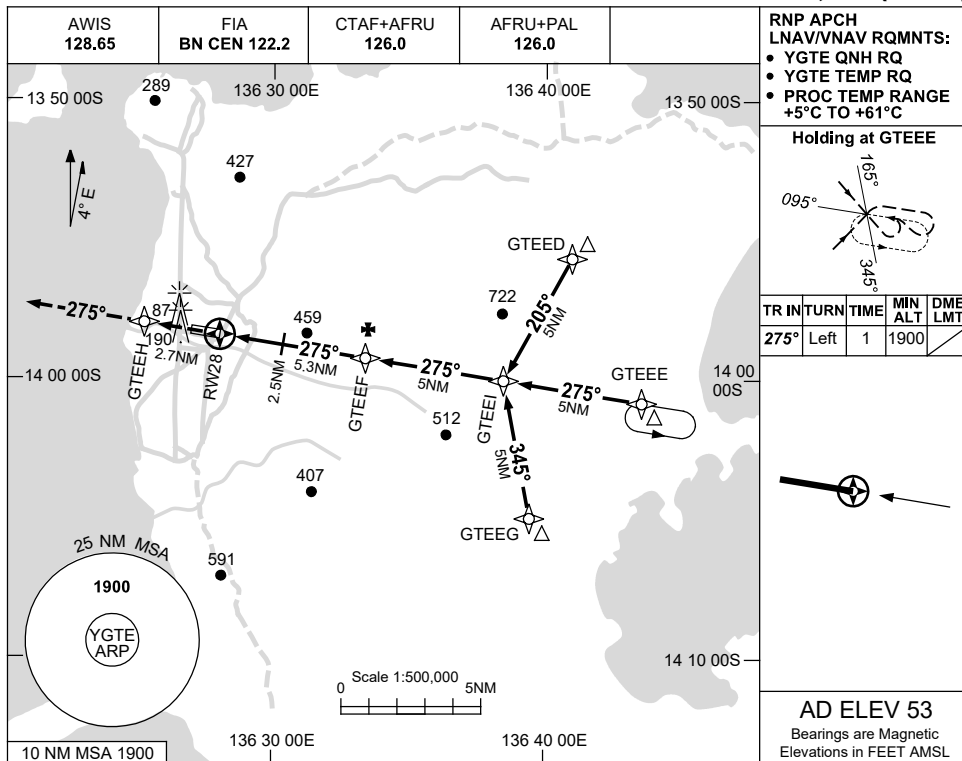
GTEGN01-172

USE QNH

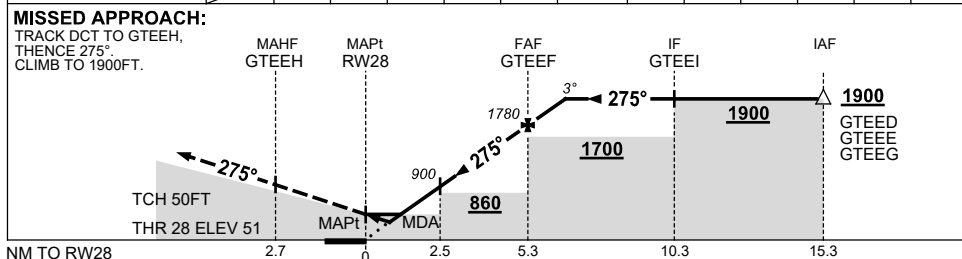
RNP RWY 28

8 SEP 2022

GROOTE EYLANDT, NT (YGTE)



NM TO NEXT WPT	RW28	1.6	2.4	2.5	3	4	GTEEF	0.4					
ALT (3° APCH PATH)		600	860	900	1060	1370	1780	1900					



NOTES

CATEGORY	A	B	C	D
LNAV/VNAV		600 (549-3.1)		NOT APPLICABLE
LNAV		860 (807-4.6)		
CIRCLING	910 (857-2.4)		1070 (1017-4.0)	
ALTERNATE	(1357-4.4)		(1517-6.0)	

1. MAX IAS:
INITIAL : 210KT.

Changes: CHART TITLE, PBN SPECIFICATION BOX.

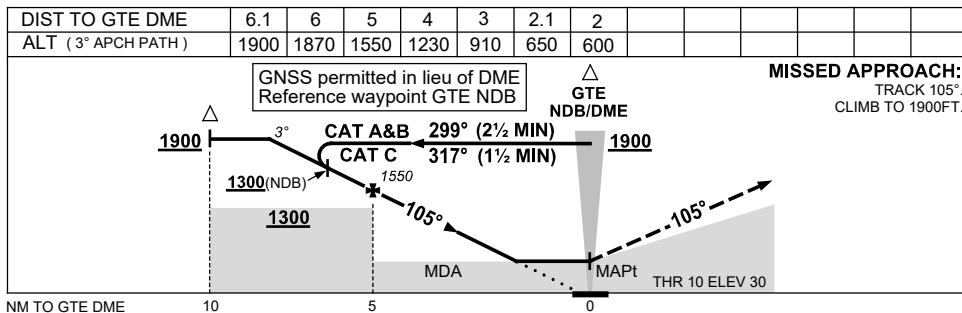
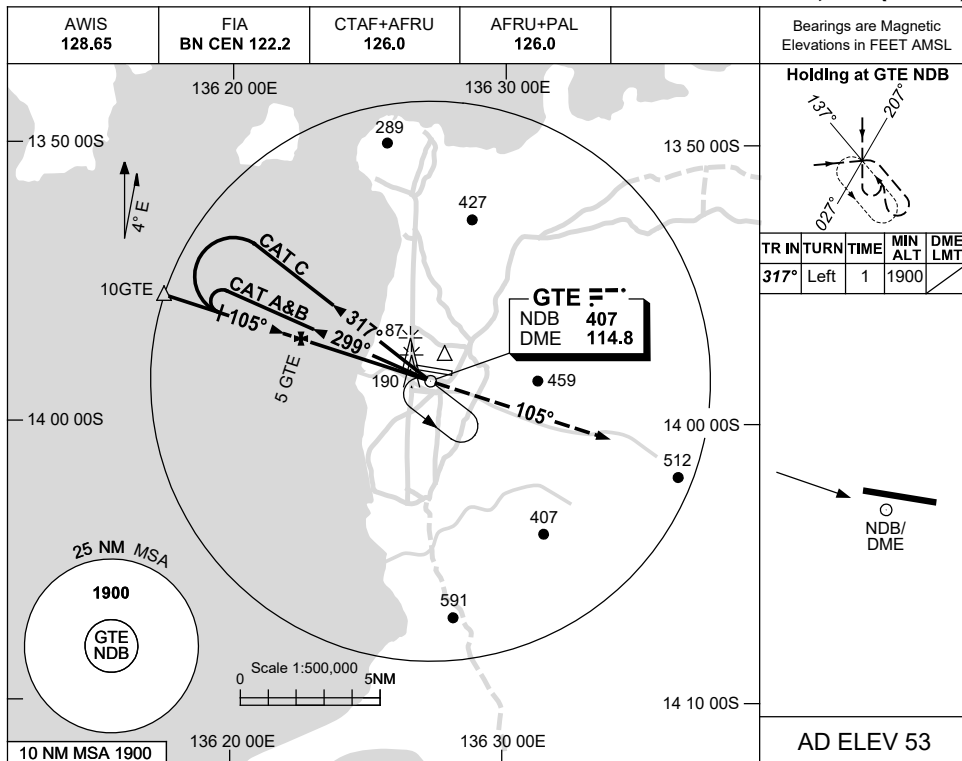
GTEGN02-172

USE QNH

NDB RWY 10

16 JUN 2022

GROOTE EYLANDT, NT (YGTE)



NOTES

CATEGORY	A	B	C	D
S-I NDB		650 (620-3.5)		NOT APPLICABLE
S-I NDB/DME		600 (570-3.2)		
CIRCLING	910 (857-2.4)		1070 (1017-4.0)	
ALTERNATE	(1357-4.4)		(1517-6.0)	

1. MAX IAS:
INITIAL : 210KT.

Changes: MAGNETIC TRACKS, DIST/ALT TABLE.

GTEB01-171