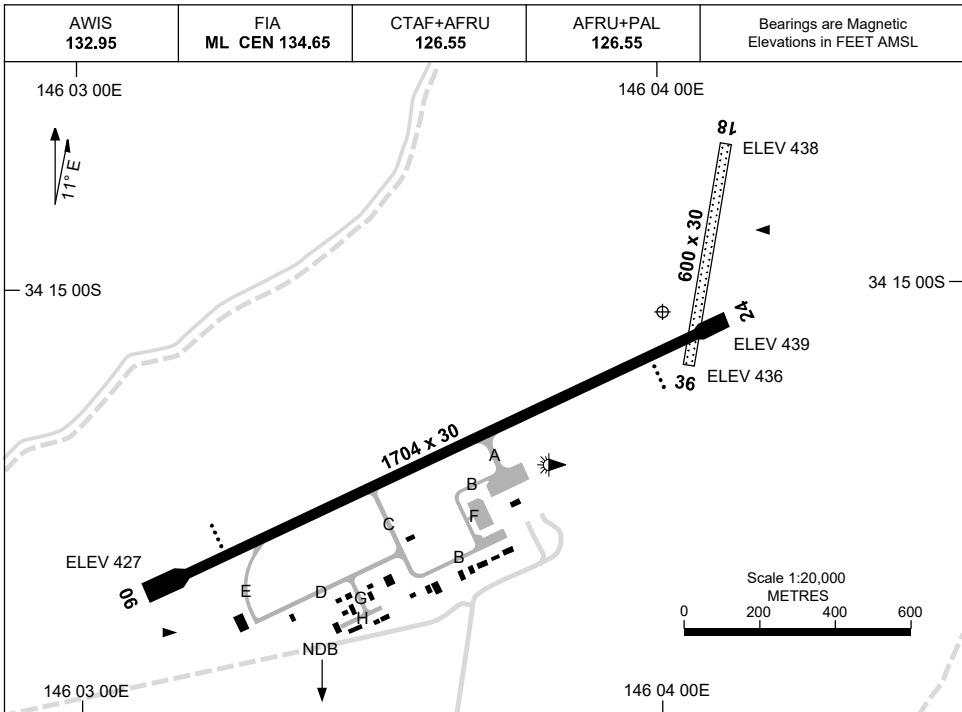


30 NOV 2023

AD ELEV 439  
34 15 03S 146 04 02E

**AERODROME CHART**  
**GRIFFITH, NSW (YGTH)**



RWY		AERODROME LIGHTING	
06	055	PAPI	3.0° 39.4FT LIRL
235	24	PAPI	3.0° 39.4FT LIRL
18	178	NIL	
358	36	NIL	

**NOTES**

Changes: TWY LIGHTING, Editorial.

GTHAD01-177

**5 NOV 2020**

AWIS 132.95	FIA ML CEN 134.65	CTAF+AFRU 126.55	AFRU+PAL 126.55		Bearings are Magnetic Elevations in FEET AMSL
----------------	----------------------	---------------------	--------------------	--	--

**REFERENCE WAYPOINT GTH NDB**

\* NO CIRCLING IN SECTOR NE OF RWYS 06 & 36 BEYOND 3NM.

<b>MNG TO GTH</b>											<b>MISSED APPROACH:</b>
											TURN LEFT, TRACK 305°. CLIMB TO 3100FT.
NM TO GTH NDB	25	15	8	5	0						
<b>CIRCLING MINIMA</b>	A,B: 1240-2.4			C: 1340-4.0		D: N/A					
NM TO GTH NDB	8	7	6	5	4	3	2.8	2.5			
ALT (3° APCH PATH)	3000	2680	2360	2050	1730	1410	1340	1240			

<b>MIA TO GTH</b>											<b>MISSED APPROACH:</b>
											TURN RIGHT, TRACK 170°. CLIMB TO 3100FT.
NM TO GTH NDB	25	15	8	5	0						
<b>CIRCLING MINIMA</b>	A,B: 1240-2.4			C: 1340-4.0		D: N/A					
NM TO GTH NDB	5.7	5	4	3	2.7						
ALT (3° APCH PATH)	2200	1980	1660	1340	1240						

<b>VINOP TO GTH</b>											<b>MISSED APPROACH:</b>
											TURN LEFT, TRACK 305°. CLIMB TO 3100FT.
NM TO GTH NDB	25	15	8	5	0						
<b>CIRCLING MINIMA</b>	A,B: 1240-2.4			C: 1340-4.0		D: N/A					
NM TO GTH NDB	6.3	6	5	4	3	2.7					
ALT (3° APCH PATH)	2400	2300	1980	1660	1340	1240					

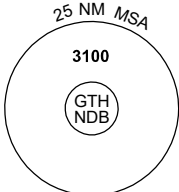
Changes: Editorial.

GTHDG01-165

# GNSS ARRIVAL PROCEDURES GRIFFITH, NSW (YGTH) Page 2

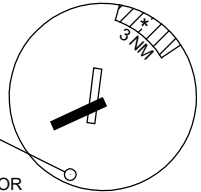
5 NOV 2020

AWIS 132.95	FIA ML CEN 134.65	CTAF+AFRU 126.55	AFRU+PAL 126.55		Bearings are Magnetic Elevations in FEET AMSL
----------------	----------------------	---------------------	--------------------	--	--



25 NM MSA  
3100  
GTH NDB

**REFERENCE WAYPOINT GTH NDB**



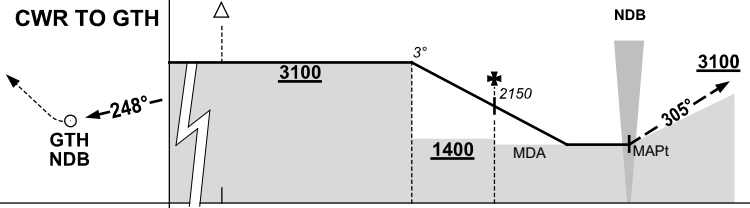
3 NM

10 NM MSA 3100

**GTH NDB 305**

**AD ELEV 439**

\* NO CIRCLING IN SECTOR  
NE OF RWYS 06 & 36  
BEYOND 3NM.

<b>CWR TO GTH</b>											<b>MISSED APPROACH:</b> TURN RIGHT, TRACK 305°. CLIMB TO 3100FT.				
NM TO GTH NDB	25	15	8	5	0										
<b>CIRCLING MINIMA</b>	A,B: 1240-2.4				C: 1340-4.0		D: N/A								
NM TO GTH NDB	8	7	6	5	4	3	2.5	2.2							
ALT (3° APCH PATH)	3100	2780	2460	2150	1830	1510	1340	1240							

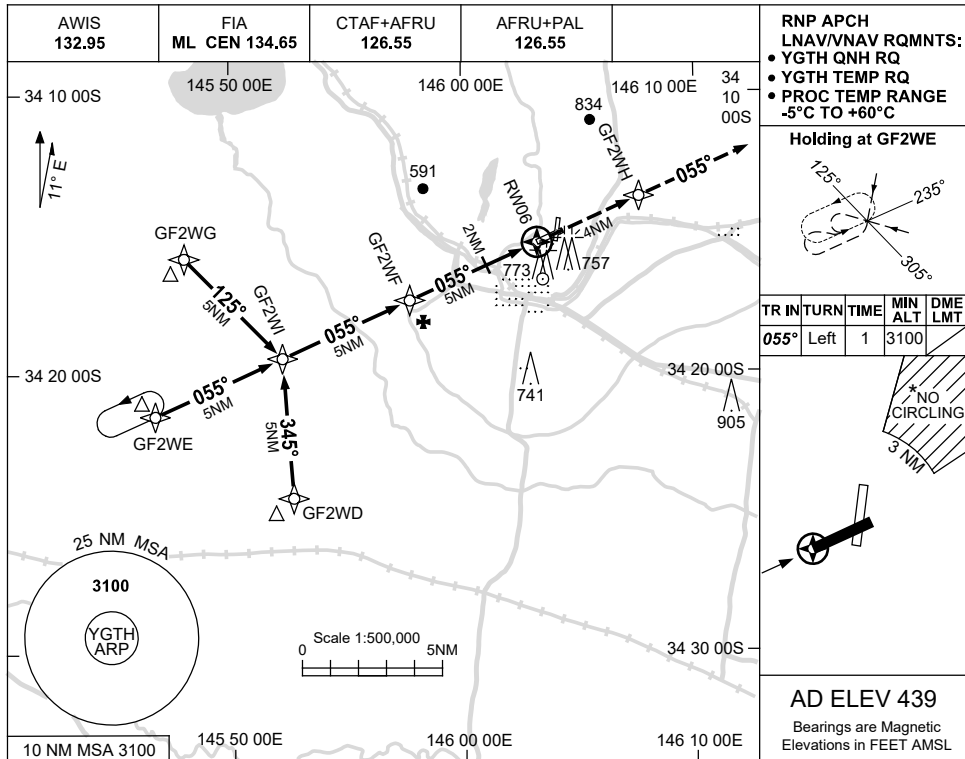
Changes: Editorial.

USE QNH

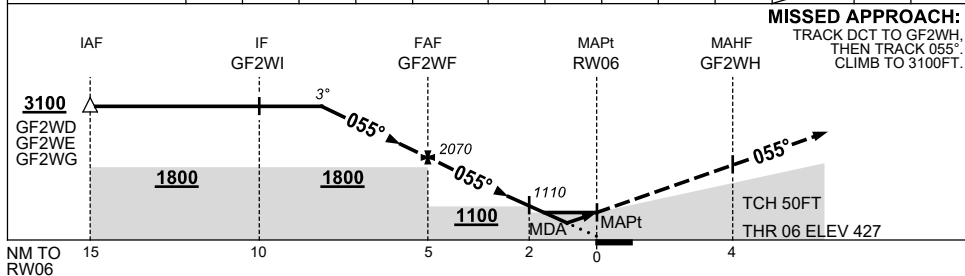
RNP RWY 06

**GRIFFITH, NSW (YGTH)**

15 JUN 2023



NM TO NEXT WPT	3.2	3	2	1	GF2WF	4	3	2	1.8	1.4	RW06		
ALT (3° APCH PATH)	3100	3020	2710	2390	2070	1750	1430	1110	1050	930			



CATEGORY	A	B	C	D
LNAV/VNAV		930 (503-2.8)		NOT APPLICABLE
LNAV		1050 (623-3.5)		
CIRCLING *	1240 (801-2.4)		1340 (901-4.0)	
ALTERNATE	(1301-4.4)		(1401-6.0)	

- MAX IAS: INITIAL : 210KT.
- \* NO CIRCLING IN SECTOR NE OF RWYS 06 & 36 BEYOND 3NM.

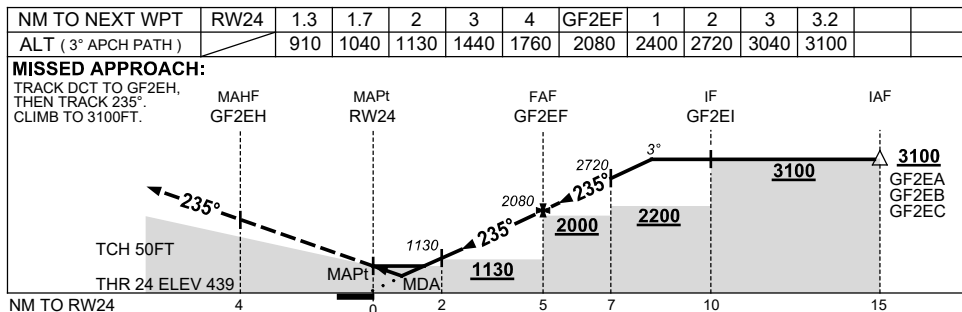
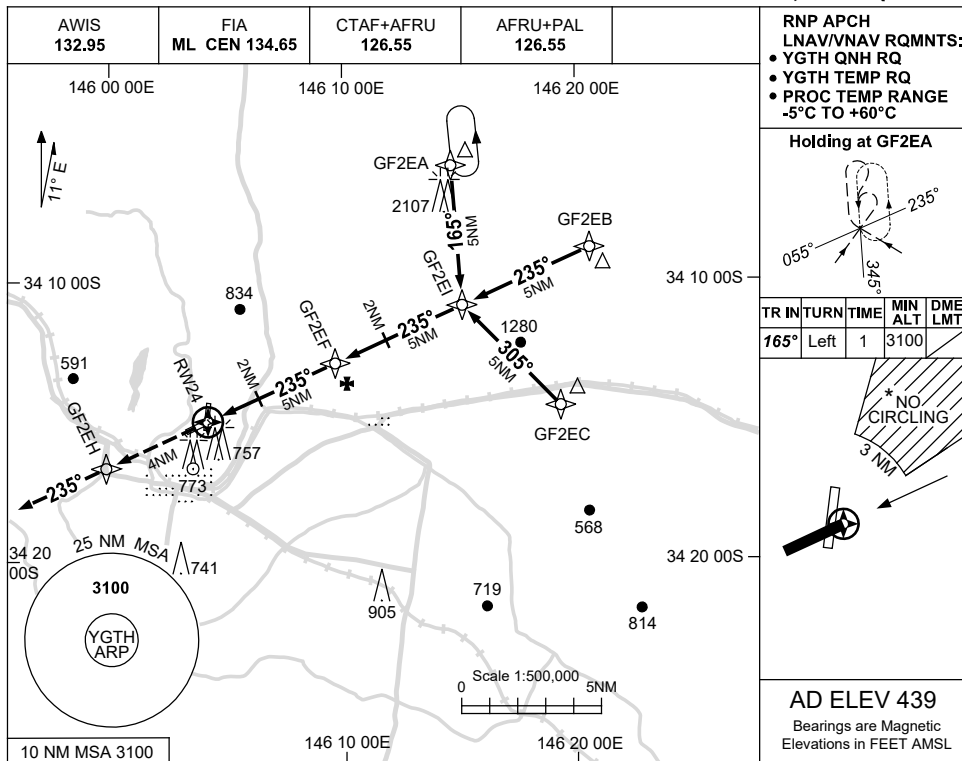
Changes: CHART TITLE, PBN SPECIFICATION BOX, Editorial.

GTHGN01-175

USE QNH

RNP RWY 24  
**GRIFFITH, NSW (YGTH)**

15 JUN 2023



**NOTES**

CATEGORY	A	B	C	D
LNAV/VNAV		<b>910 (471-2.7)</b>		<b>NOT APPLICABLE</b>
LNAV		<b>1040 (601-3.4)</b>		
CIRCLING *	<b>1240 (801-2.4)</b>		<b>1340 (901-4.0)</b>	
ALTERNATE	(1301-4.4)		(1401-6.0)	

1. MAX IAS:  
INITIAL : 210KT.
- \* 2. NO CIRCLING IN SECTOR NE OF RWYS 06 & 36 BEYOND 3NM.

Changes: CHART TITLE, PBN SPECIFICATION BOX, Editorial.

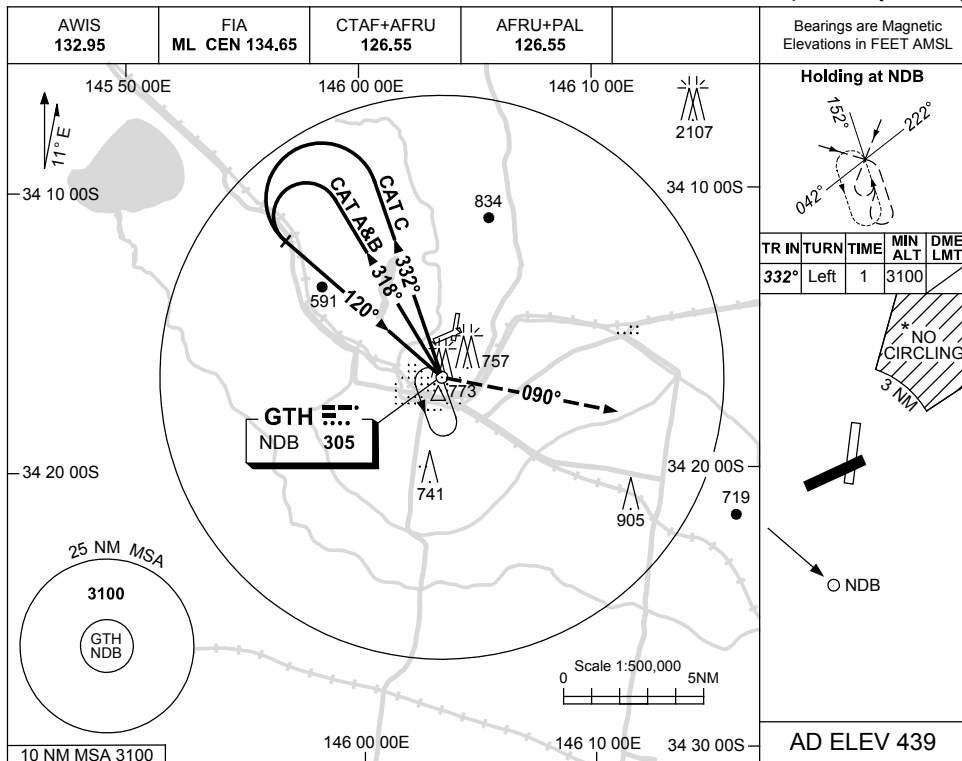
GTHGN02-175

USE QNH

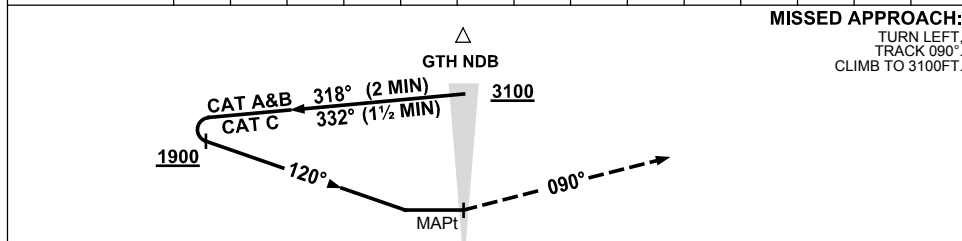
NDB-A

5 NOV 2020

**GRIFFITH, NSW (YGTH)**



DME DIST	NOT APPLICABLE			
ALT				



**NOTES**

CATEGORY	A	B	C	D
CIRCLING *	1240 (801-2.4)	1340 (901-4.0)		NOT APPLICABLE
ALTERNATE	(1301-4.4)	(1401-6.0)		

1. MAX IAS:  
INITIAL : 210KT.
- \* 2. NO CIRCLING IN  
SECTOR NE OF  
RWYS 06 & 36  
BEYOND 3NM.

Changes: 2107FT OBST, CAT C OUTBOUND TRACK.

GTHNB01-165