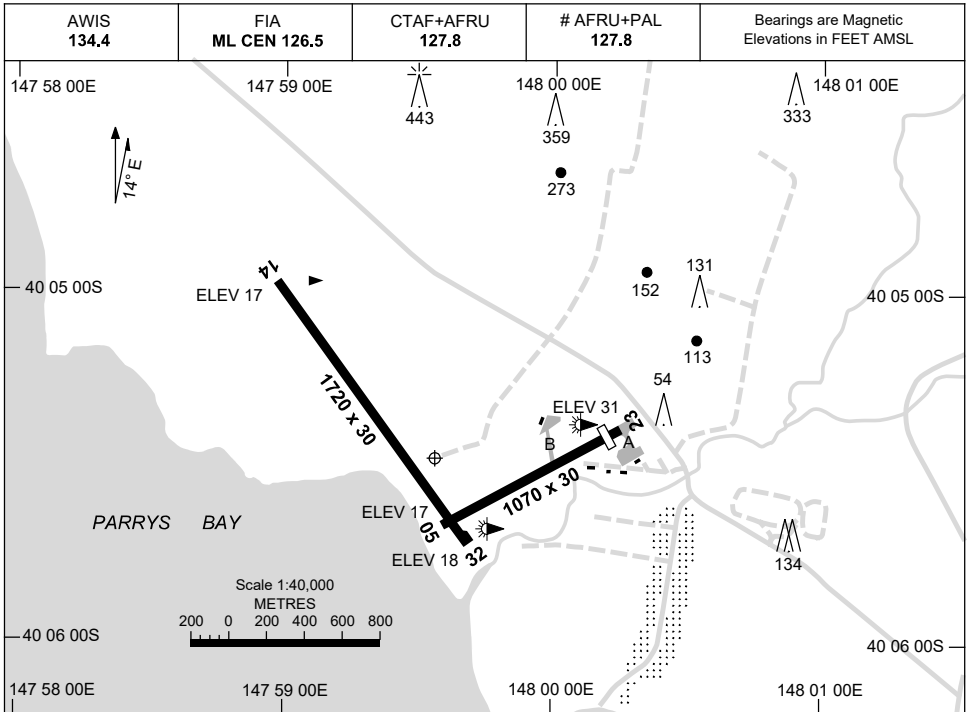


15 JUN 2023

AD ELEV 34  
40 05 29S 147 59 34E

**AERODROME CHART  
FLINDERS ISLAND, TAS (YFLI)**



		<b>AERODROME LIGHTING</b>	
<b>RWY</b>		HBN	: FLG R 1 SEC
		TAXIWAY	: BLUE EDGE
		RL	: AFRU+PAL 127.8 , SDBY (15 SEC)
<b>14</b>	<sup>130</sup>	LIRL	
<sup>310</sup>	<b>32</b>	LIRL	
<b>05</b>	<sup>047</sup>	LIRL	
<sup>227</sup>	<b>23</b>	LIRL	

**NOTES**

- # 1. ACTIVATION RANGE MAY BE REDUCED TO THE NORTH DUE TO HIGH TERRAIN.
2. AWIS 134.4 ACTIVATED BY 1 SEC TRANSMISSION.
3. FIA FREQ 126.5 AVBL CIRCUIT AREA.

Changes: NOTES and Editorial.

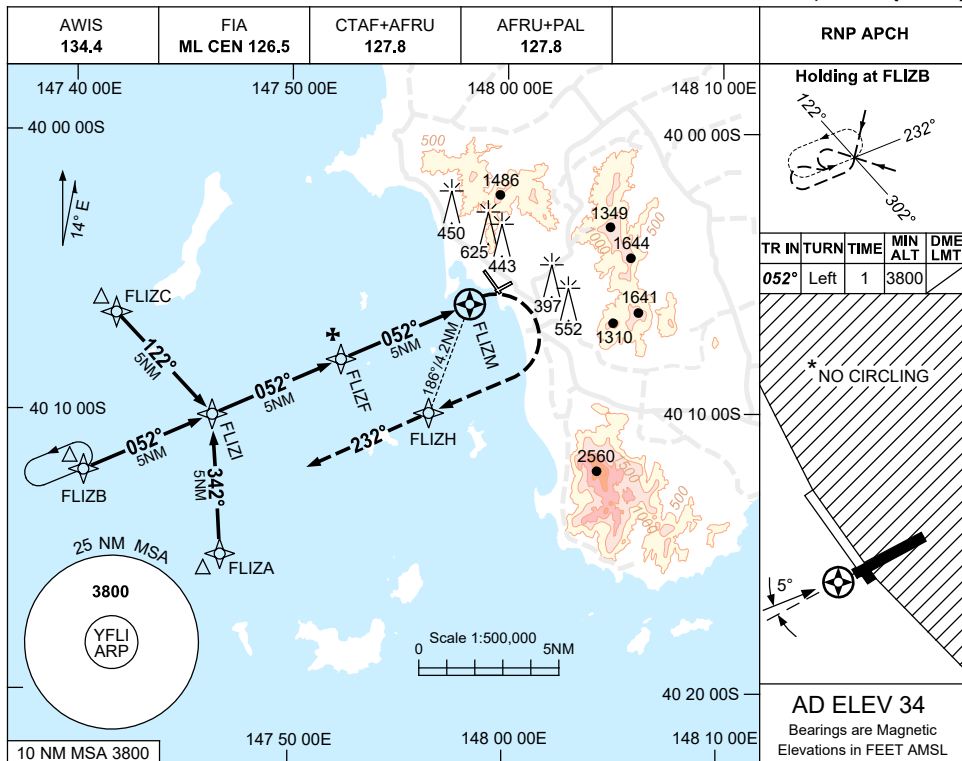
FLIAD01-175

USE QNH

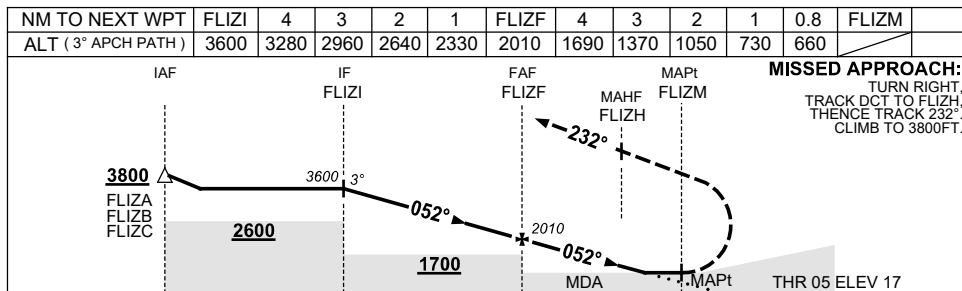
RNP Z RWY 05

15 JUN 2023

FLINDERS ISLAND, TAS (YFLI)



**AD ELEV 34**  
Bearings are Magnetic  
Elevations in FEET AMSL



**MISSED APPROACH:**  
TURN RIGHT,  
TRACK DCT TO FLIZH,  
THENCE TRACK 232°,  
CLIMB TO 3800FT.

NM TO FLIZM 15 10 5 0 1.1

CATEGORY	A	B	C	D
LNAV	660 (643-3.7)			NOT APPLICABLE
CIRCLING *	1170 (1136-2.4)		1270 (1236-4.0)	
ALTERNATE	(1636-4.4)		(1736-6.0)	

- NOTES**
- MAX IAS:  
INITIAL : 210KT.  
MAP TURN: 160KT.
  - \*2. NO CIRCLING EAST OF RWY 14/32.
  - COLOUR: SEE SPEC NOTICES.

Changes: CHART TITLE, PBN SPECIFICATION BOX, Editorial.

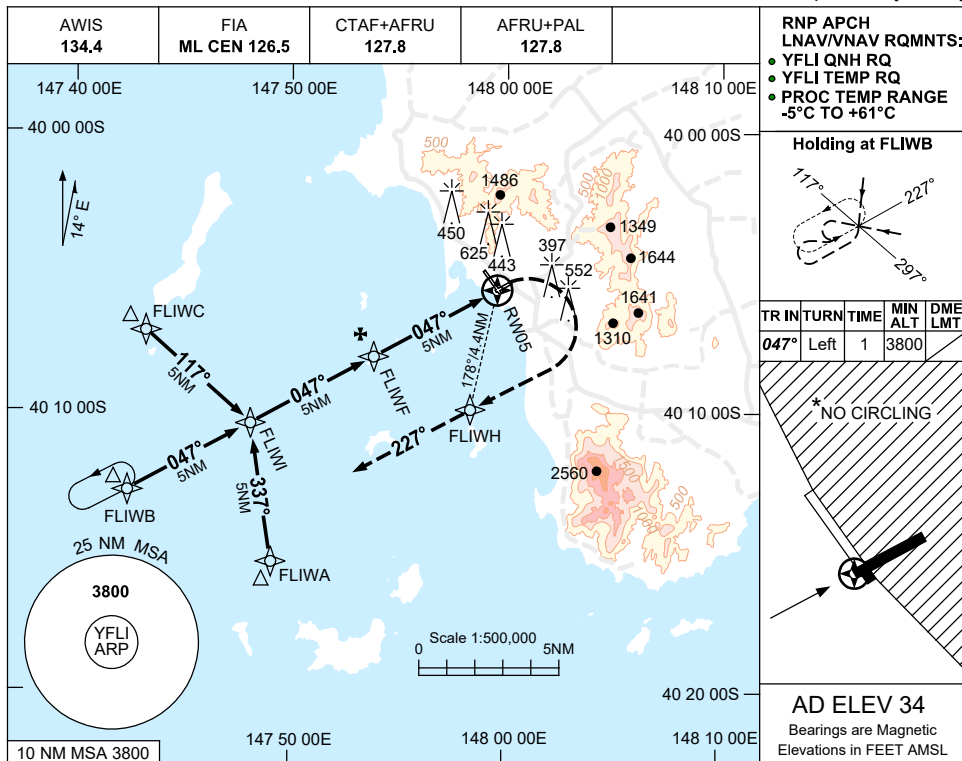
FLIGN01-175

USE QNH

RNP Y RWY 05

15 JUN 2023

**FLINDERS ISLAND, TAS (YFLI)**



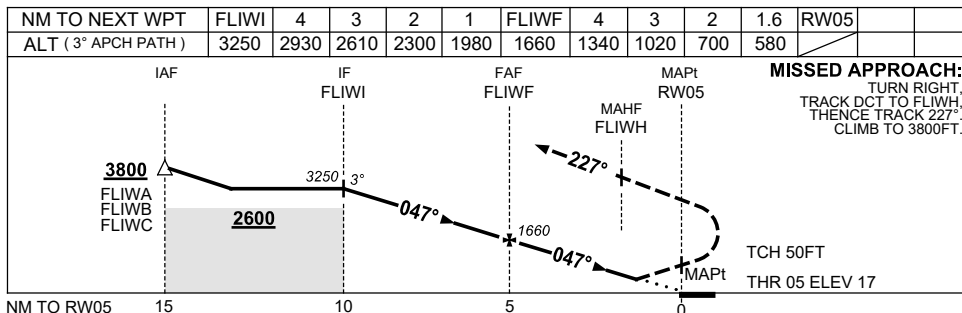
**RNP APCH LNAV/VNAV RQMTS:**

- YFLI QNH RQ
- YFLI TEMP RQ
- PROC TEMP RANGE -5°C TO +61°C

**Holding at FLIWB**

TR	IN	TURN	TIME	MIN ALT	DME LMT
047°	Left	1	3800		

**AD ELEV 34**  
Bearings are Magnetic  
Elevations in FEET AMSL



CATEGORY	A	B	C	D
LNAV/VNAV	580(563-3.2)			NOT APPLICABLE
CIRCLING *	1170(1136-2.4)		1270(1236-4.0)	
ALTERNATE	(1636-4.4)		(1736-6.0)	

- NOTES**
- MAX IAS: INITIAL : 210KT. MAP TURN: 160KT.
  - NO CIRCLING EAST OF RWY 14/32.
  - COLOUR: SEE SPEC NOTICES.

Changes: CHART TITLE, PBN SPECIFICATION BOX, Editorial.

FLIGN02-175