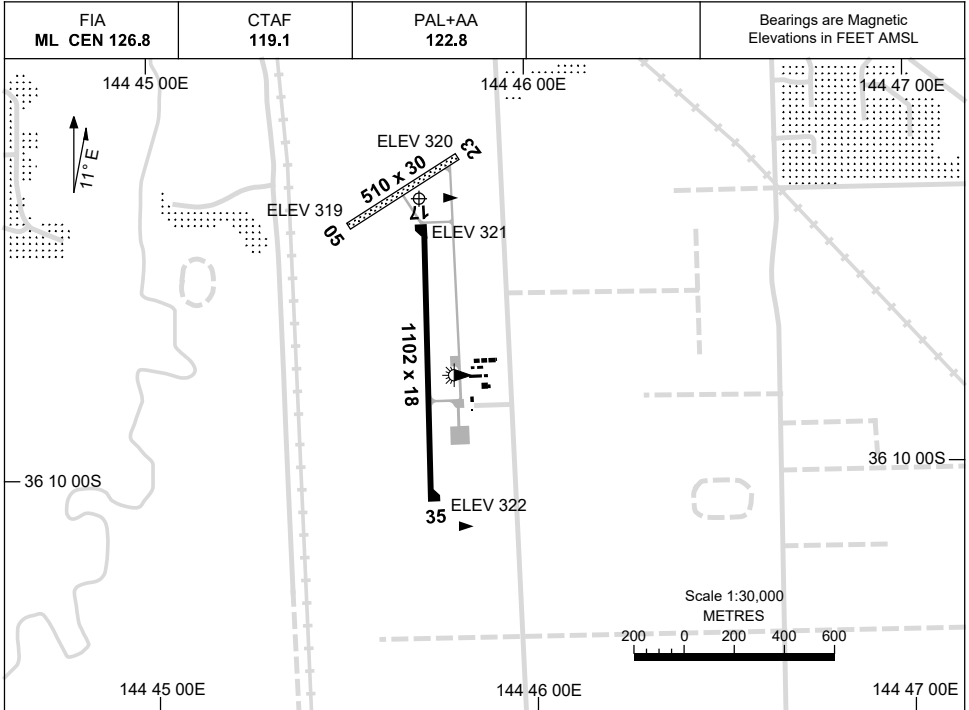


15 JUN 2023

AD ELEV 323  
36 09 26S 144 45 43E

AERODROME CHART  
**ECHUCA, VIC (YECH)**



	<b>AERODROME LIGHTING</b>	
<b>RWY</b>	TAXIWAY : BLUE EDGE RL : PAL+AA 122.8	
<b>17</b> <sup>168</sup> <b>348</b> <b>35</b>	LIRL	
<b>05</b> <sup>048</sup> <b>228</b> <b>23</b>	NIL	

**NOTES**

1. FIA FREQ 126.8 AVBL IN CIRCUIT AREA.

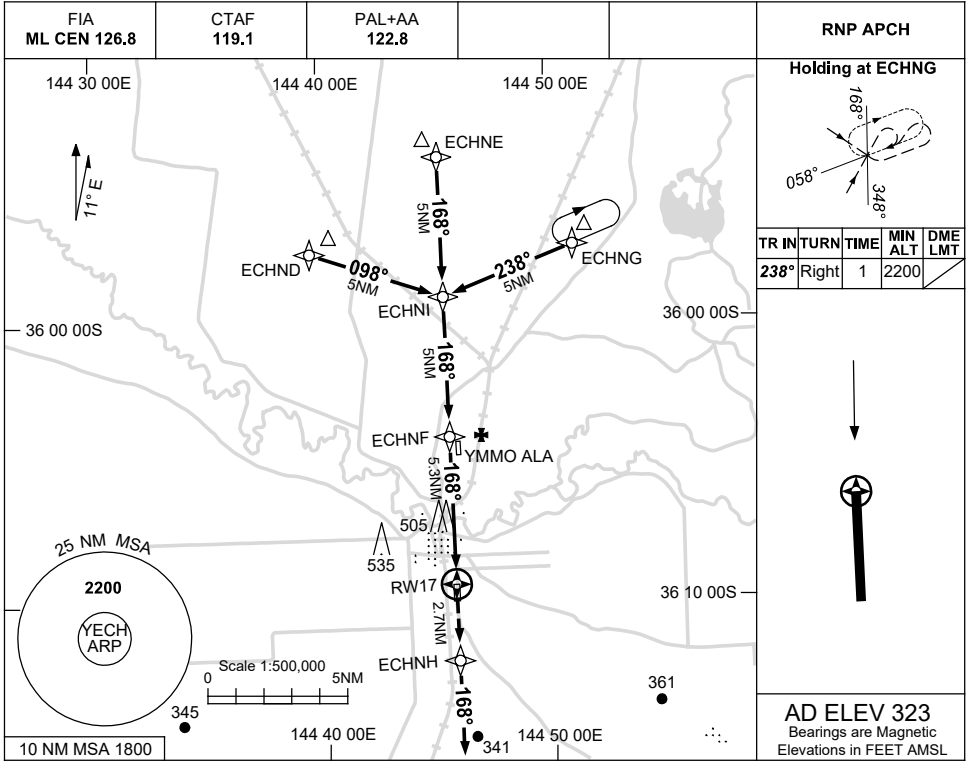
Changes: NOTES.

ECHAD01-175

USE QNH

RNP RWY 17  
**ECHUCA, VIC (YECH)**

23 MAR 2023

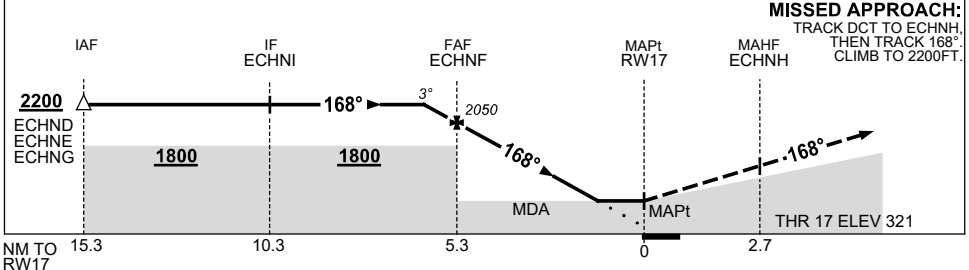


**Holding at ECHNG**

TR IN	TURN	TIME	MIN ALT	DME LMT
238°	Right	1	2200	

**AD ELEV 323**  
 Bearings are Magnetic  
 Elevations in FEET AMSL

NM TO NEXT WPT	0.5	ECHNF	4	3	2	1.5	RW17
ALT (3° APCH PATH)	2200	2050	1650	1330	1010	860	



**NOTES**

CATEGORY	A	B	C	D
LNAV	860 (537-3.0)			NOT APPLICABLE
CIRCLING	930 (607-2.4)		1030 (707-4.0)	
ALTERNATE	(1107-4.4)		(1207-6.0)	

1. MAX IAS:  
 INITIAL : 210KT.

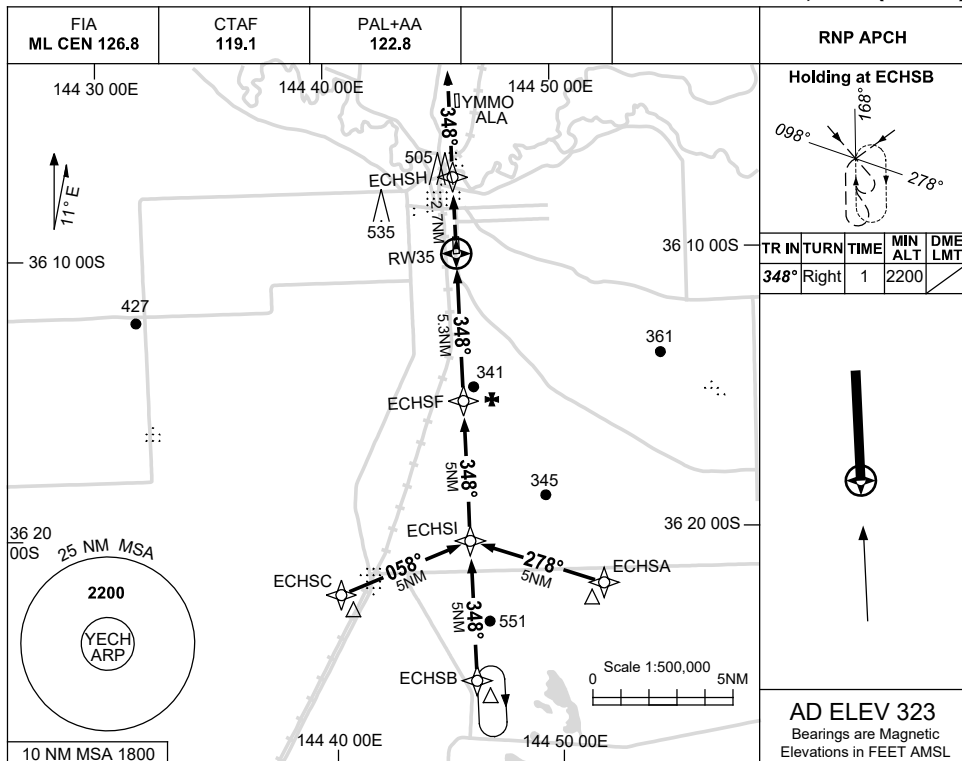
Changes: CHART TITLE, PBN SPECIFICATION BOX.

ECHGN01-174

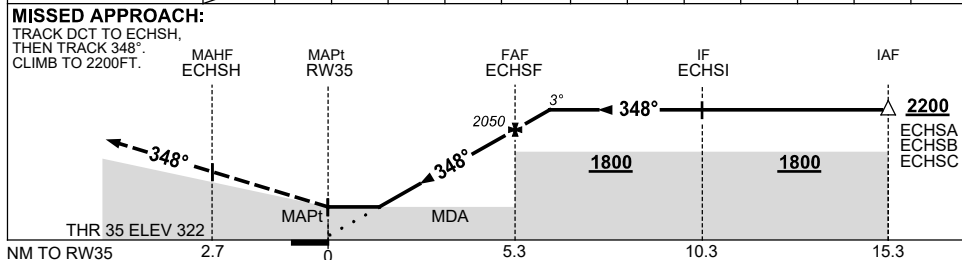
USE QNH

RNP RWY 35  
**ECHUCA, VIC (YECH)**

23 MAR 2023



NM TO NEXT WPT	RW35	1.6	2	3	4	ECHSF	0.5				
ALT (3° APCH PATH)		880	1010	1330	1650	2050	2200				



**NOTES**

CATEGORY	A	B	C	D
LNAV	<b>880 (557-3.1)</b>			NOT APPLICABLE
CIRCLING	<b>930 (607-2.4)</b>		<b>1030 (707-4.0)</b>	
ALTERNATE	<b>(1107-4.4)</b>		<b>(1207-6.0)</b>	

1. MAX IAS:  
 INITIAL : 210KT.

Changes: CHART TITLE, PBN SPECIFICATION BOX.

ECHGN02-174