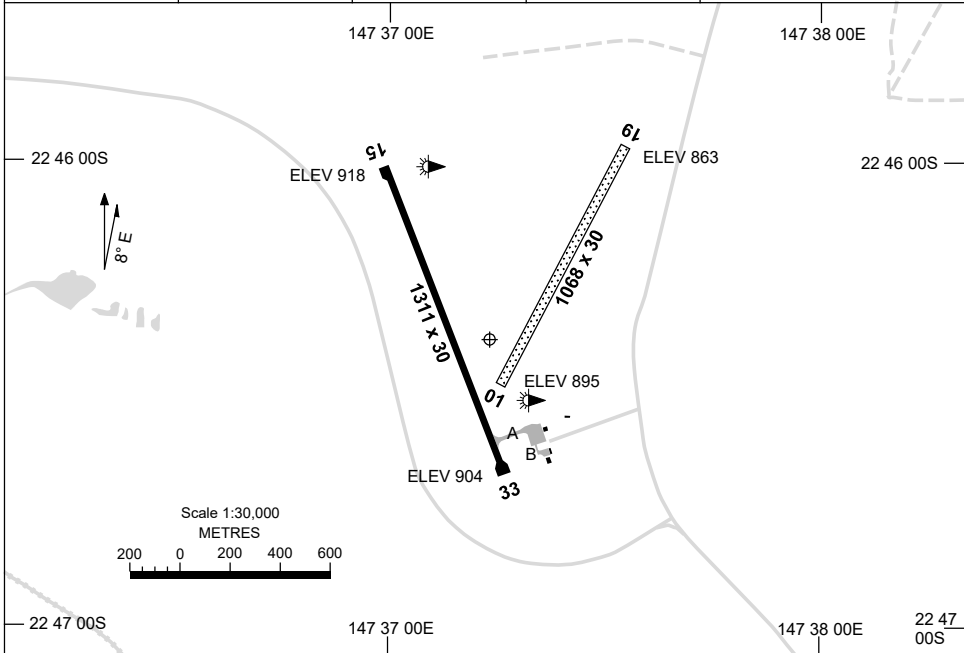


8 SEP 2022

AD ELEV 918
22 46 23S 147 37 14E

AERODROME CHART
CLERMONT, QLD (YCMT)

FIA BN CEN 122.3	CTAF 126.7	PAL 119.6		Bearings are Magnetic Elevations in FEET AMSL
---------------------	---------------	--------------	--	--



RWY		AERODROME LIGHTING
		TAXIWAY : BLUE EDGE RL : PAL 119.6 , PTBL (60 MIN PN) , SDBY (MAN ACT, 30 MIN PN)
15 ¹⁵⁰		LIRL PTBL
³³⁰ 33		LIRL PTBL
01 ⁰¹⁹		PTBL
¹⁹⁹ 19		PTBL

NOTES

1. FIA FREQ 122.3 AVBL IN CIRCUIT AREA.

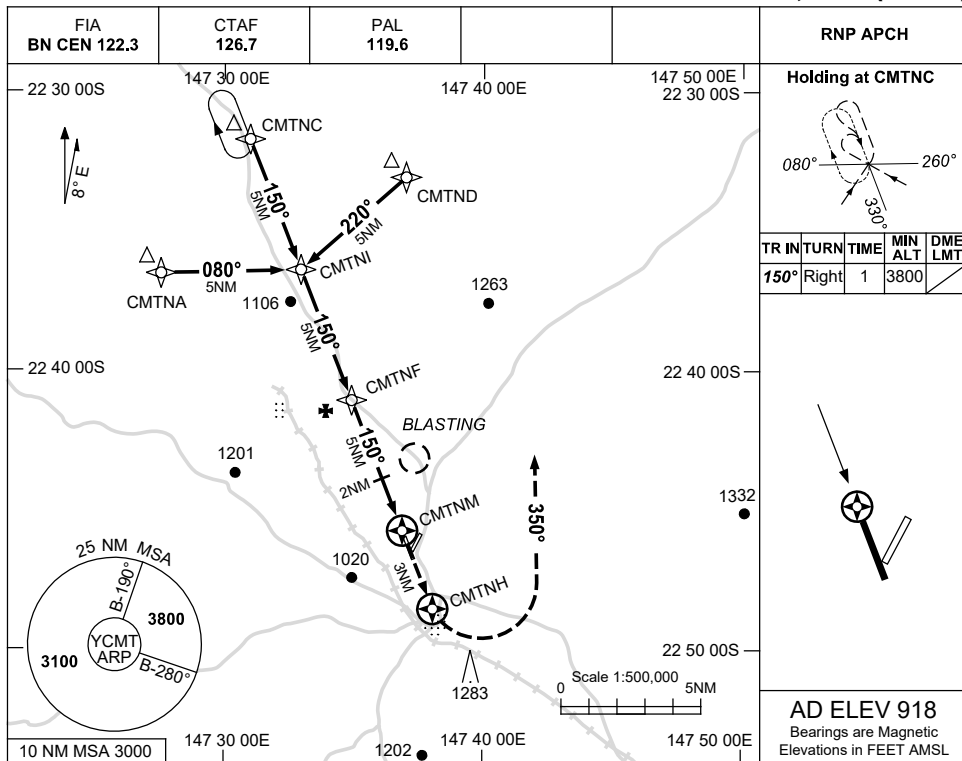
Changes: PTBL LIGHTING ADDED, NOTES.

CMTAD01-172

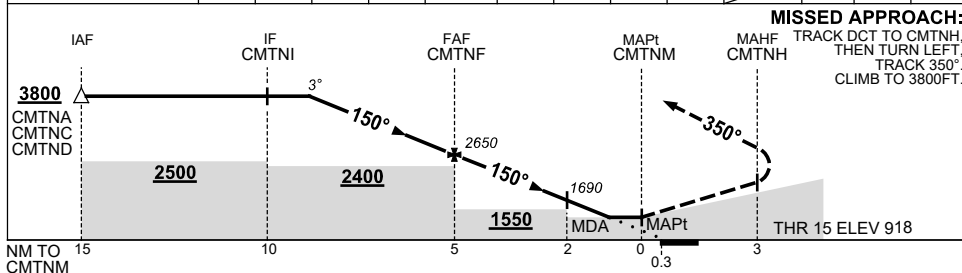
USE QNH

RNP RWY 15
CLERMONT, QLD (YCMT)

8 SEP 2022



NM TO NEXT WPT	3.6	3	2	1	CMTNF	4	3	2	1.3	CMTNM			
ALT (3° APCH PATH)	3800	3600	3280	2960	2650	2330	2010	1690	1470				



MISSED APPROACH:
TRACK DCT TO CMTNH,
THEN TURN LEFT,
TRACK 350°.
CLIMB TO 3800FT.

NOTES

CATEGORY	A	B	C	D
LNAV	1470 (552-3.1)			NOT APPLICABLE
CIRCLING	1570 (652-2.4)	1780 (862-4.0)		
ALTERNATE	(1152-4.4)		(1362-6.0)	

- MAX IAS:
INITIAL : 210KT.
- BLASTING BRG 010
MAG AND 3NM FM
ARP BTN 2100 AND
0700 UTC DLY.

Changes: NOTE 2.

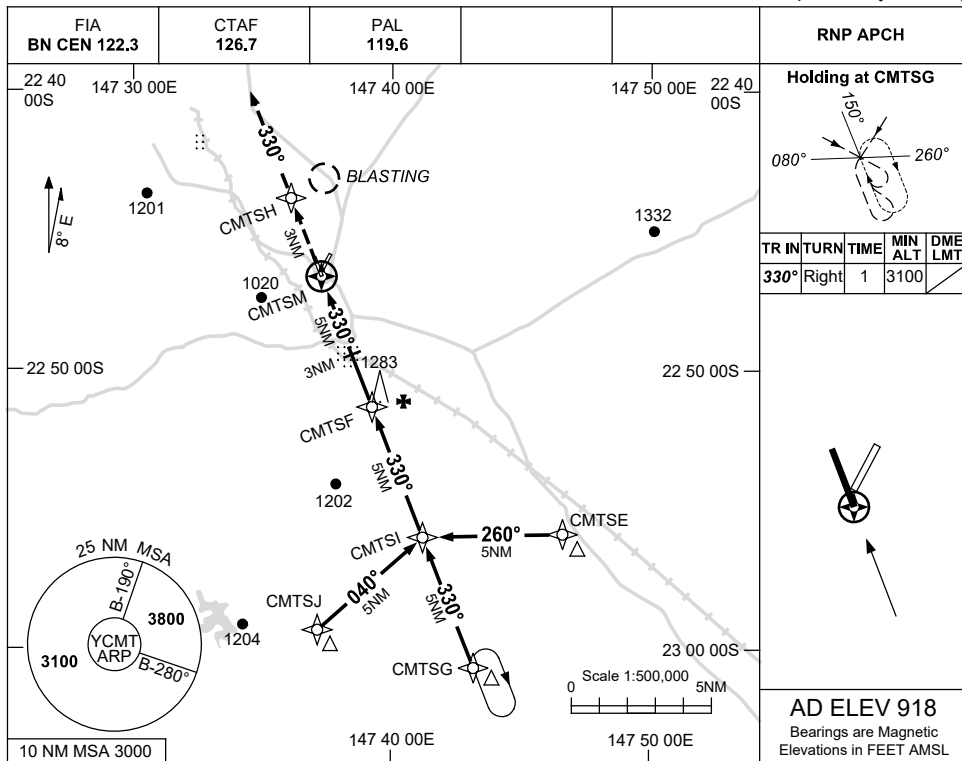
CMTGN01-172

USE QNH

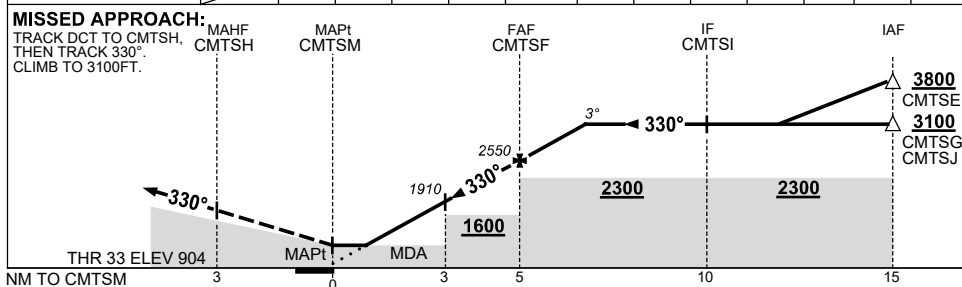
RNP RWY 33

8 SEP 2022

CLERMONT, QLD (YCMT)



NM TO NEXT WPT	CMTSM	1.6	2	3	4	CMTSF	1	1.7				
ALT (3° APCH PATH)		1450	1590	1910	2230	2550	2860	3100				



NOTES

CATEGORY	A	B	C	D
LNAV	1450 (546-3.1)			NOT APPLICABLE
CIRCLING	1570 (652-2.4)	1780 (862-4.0)		
ALTERNATE	(1152-4.4)		(1362-6.0)	

- MAX IAS: INITIAL : 210KT.
- BLASTING BRG 010 MAG AND 3NM FM ARP BTN 2100 AND 0700 UTC DLY.

Changes: NOTE 2.

CMTGN02-172