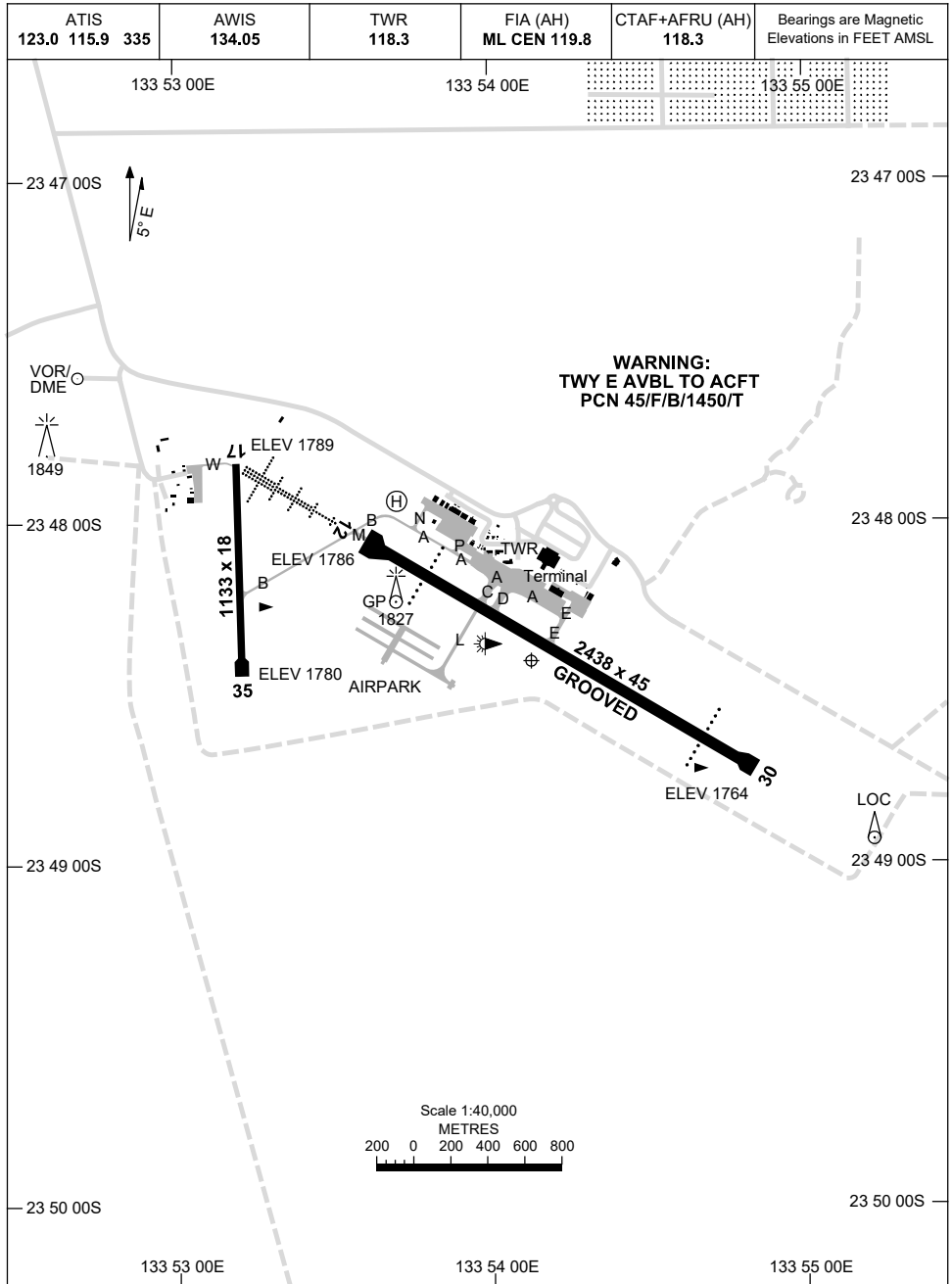


24 MAR 2022

AD ELEV 1789
23 48 30S 133 54 03E

AERODROME CHART - Page 1
ALICE SPRINGS, NT (YBAS)



1 DEC 2022

AD ELEV 1789
23 48 30S 133 54 03E

AERODROME CHART - Page 2
ALICE SPRINGS, NT (YBAS)

ATIS 123.0 115.9 335	AWIS 134.05	TWR 118.3	FIA (AH) ML CEN 119.8	CTAF+AFRU (AH) 118.3	Bearings are Magnetic Elevations in FEET AMSL
RWY	AERODROME LIGHTING				
	TAXIWAY : SOLAR TWY B, M. BLUE REFLECTIVE EDGE TWY A, B (BTN M AND RPT APRON), RL : MAN , SDBY (15 SEC)				
12 ¹¹⁶ 296 30	PAPI 3.0° 49FT MIRL HIRL HIAL-CAT I PTBL PAPI 3.0° 49FT MIRL PTBL				
17 ¹⁷⁴ 354 35	PTBL PTBL				

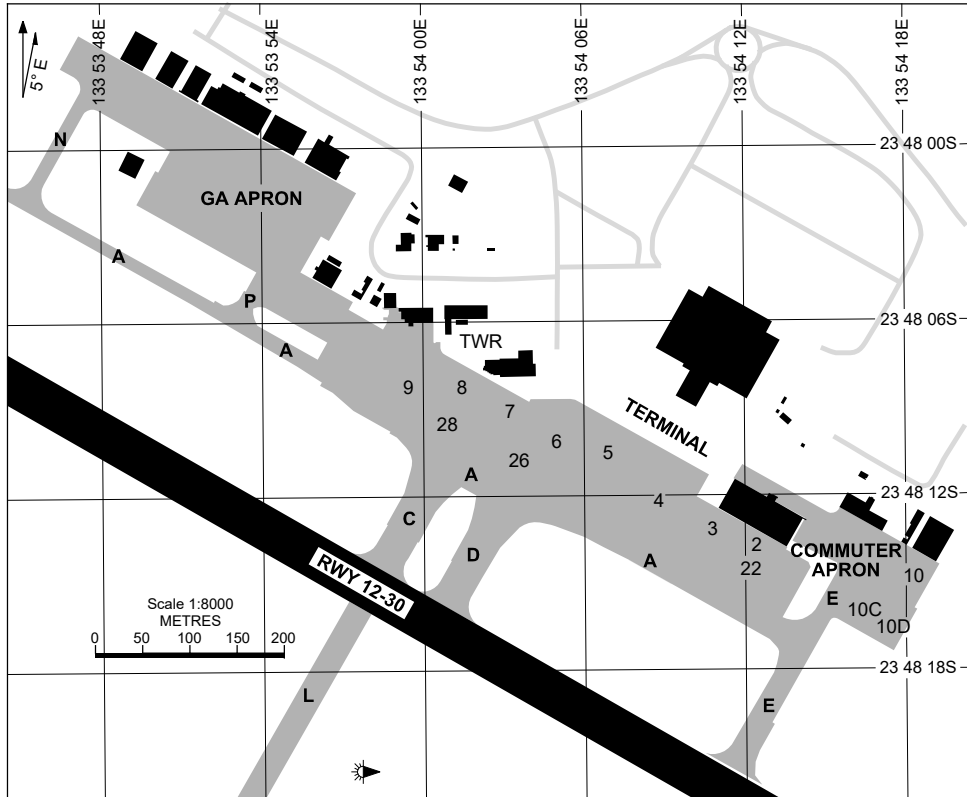
NOTES

1. RWY 17/35 PTBL - SOLAR LIGHTING FOR HN AND EMERG OPR ONLY.

Changes: NOTE 1 DELETED.

BASAD02-173

23 MAR 2023



PARKING POSITION INFORMATION

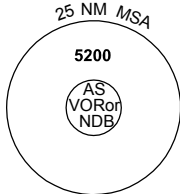
STAND	CO-ORDINATES		ELEV (ft)	CAPACITY	HYDRANT FUEL	DOCKING SYSTEM
2	23 48 14.06S	133 54 12.59E	1778	B738/A320	NIL	MARSHALLED
3	23 48 13.03S	133 54 10.66E	1777	B738/A320	NIL	MARSHALLED
4	23 48 12.00S	133 54 08.74E	1777	B738/A320	NIL	MARSHALLED
5	23 48 10.96S	133 54 06.82E	1777	B738/A320	NIL	MARSHALLED
6	23 48 09.93S	133 54 04.90E	1780	B738/A320	NIL	MARSHALLED
7	23 48 08.90S	133 54 02.97E	1781	B738/A320	NIL	MARSHALLED
8	23 48 08.05S	133 54 01.40E	1781	B712/E190	NIL	MARSHALLED
9	23 48 08.04S	133 53 59.12E	1781	B772/B763	NIL	MARSHALLED
10	23 48 14.66S	133 54 17.89E	1776	D8-300	NIL	MARSHALLED
10C	23 48 15.73S	133 54 16.55E	1774	WINGSPAN 17.5 metres	NIL	PILOT
10D	23 48 16.26S	133 54 17.56E	1774	WINGSPAN 17.5 metres	NIL	PILOT
22	23 48 14.37S	133 54 12.24E	1777	B738/A320	NIL	MARSHALLED
26	23 48 10.48S	133 54 03.35E	1779	A380/B744	NIL	MARSHALLED
28	23 48 09.26S	133 54 01.08E	1780	A380/B744	NIL	MARSHALLED

NOTE: SOME SECONDARY BAYS OBSTRUCT PRIMARY BAYS.

DME or GNSS ARRIVAL PROCEDURES ALICE SPRINGS, NT (YBAS)

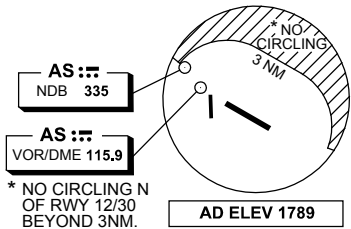
28 FEB 2019

ATIS 123.0 115.9 335	AWIS 134.05	TWR 118.3	FIA (AH) ML CEN 119.8	CTAF+AFRU (AH) 118.3	Bearings are Magnetic Elevations in FEET AMSL
-------------------------	----------------	--------------	--------------------------	-------------------------	--

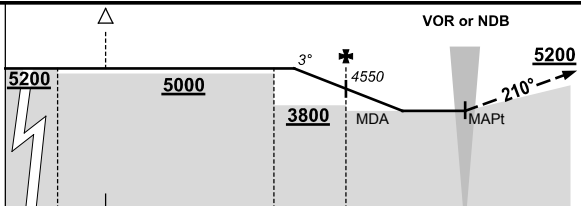
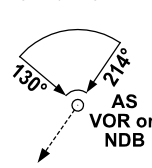


10 NM MSA 4300

**DME USING AS DME
REFERENCE WAYPOINT AS VOR**



SECTOR A



MISSED APPROACH:

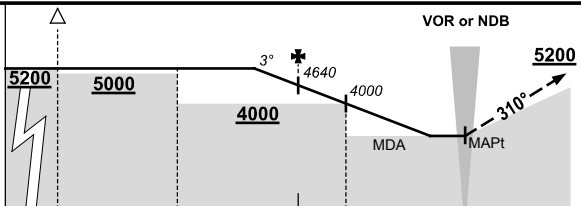
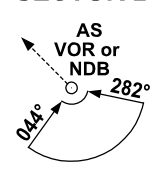
TRACK 210° AS VOR OR NDB, CLIMB TO 5200FT.

NM TO AS VOR	25	17	15	8	5	0													
--------------	----	----	----	---	---	---	--	--	--	--	--	--	--	--	--	--	--	--	--

CIRCLING MINIMA	A,B: 3800-2.4		C: 3800-4.0		D: 3800-5.0															
------------------------	---------------	--	-------------	--	-------------	--	--	--	--	--	--	--	--	--	--	--	--	--	--	--

NM TO AS VOR	7.1	6	5	4	3	2.7														
ALT (3° APCH PATH)	5200	4860	4550	4230	3910	3800														

SECTOR B



MISSED APPROACH:

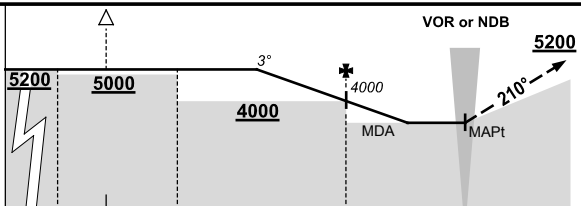
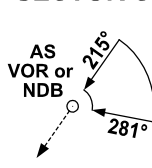
TRACK 310° AS VOR OR NDB, CLIMB TO 5200FT.

NM TO AS VOR	25	17	12	7	5	0													
--------------	----	----	----	---	---	---	--	--	--	--	--	--	--	--	--	--	--	--	--

CIRCLING MINIMA	A,B: 2870-2.4		C: 3300-4.0		D: 3400-5.0															
------------------------	---------------	--	-------------	--	-------------	--	--	--	--	--	--	--	--	--	--	--	--	--	--	--

NM TO AS VOR	8.8	8	7	6	5	4	3.1	2.8	2	1.4										
ALT (3° APCH PATH)	5200	4960	4640	4320	4000	3680	3400	3300	3040	2870										

SECTOR C



MISSED APPROACH:

TRACK 210° AS VOR OR NDB, CLIMB TO 5200FT.

NM TO AS VOR	25	17	15	12	5	0														
--------------	----	----	----	----	---	---	--	--	--	--	--	--	--	--	--	--	--	--	--	--

CIRCLING MINIMA	A,B: 3160-2.4		C: 3300-4.0		D: 3400-5.0															
------------------------	---------------	--	-------------	--	-------------	--	--	--	--	--	--	--	--	--	--	--	--	--	--	--

NM TO AS VOR	8.8	8	7	6	5	4	3.1	3	2.8	2.4										
ALT (3° APCH PATH)	5200	4960	4640	4320	4000	3680	3400	3360	3300	3160										

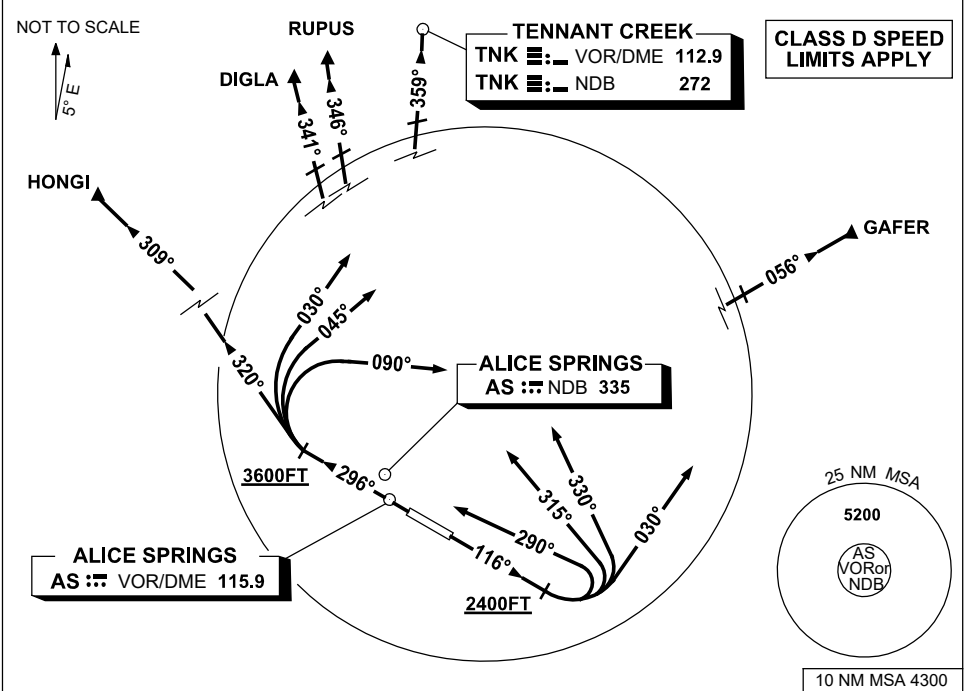
Changes: SECTOR B MNM, SECTOR C MNM, Editorial.

BASDG01-158

**STANDARD INSTRUMENT DEPARTURES (SID)
RWY 12/30 NORTH
ALICE SPRINGS, NT (YBAS)**

30 NOV 2023

ATIS 123.0 115.9 335	AWIS 134.05	TWR 118.3	FIA (AH) ML CEN 119.8	CTAF+AFRU (AH) 118.3	Bearings are Magnetic Elevations in FEET AMSL
-------------------------	----------------	--------------	--------------------------	-------------------------	--



<p>DIGLA RUPUS TENNANT CREEK (TNK) THREE DEPARTURE</p> <p>ALICE SPRINGS ONE DEPARTURE</p> <p>HONGI THREE DEPARTURE</p> <p>GAFER THREE DEPARTURE</p>	<p>RWY 30 GRAD 3.8% TO 3600ft THENCE 3.3%</p> <ul style="list-style-type: none"> Track 296° At or ABV 3600ft but not before abeam AS VOR or AS NDB turn RIGHT <p>For HONGI</p> <ul style="list-style-type: none"> Track 320° Intercept cleared route <p>For DIGLA and RUPUS</p> <ul style="list-style-type: none"> Track 030° Intercept cleared route <p>For TNK</p> <ul style="list-style-type: none"> Track 045° Intercept cleared route <p>For GAFER</p> <ul style="list-style-type: none"> Track 090° Intercept cleared route 	<p>RWY 12 GRAD 3.3%</p> <ul style="list-style-type: none"> Track 116° At or ABV 2400ft turn LEFT <p>For HONGI</p> <ul style="list-style-type: none"> Track 290° Intercept cleared route <p>For DIGLA and RUPUS</p> <ul style="list-style-type: none"> Track 315° Intercept cleared route <p>For TNK</p> <ul style="list-style-type: none"> Track 330° Intercept cleared route <p>For GAFER</p> <ul style="list-style-type: none"> Track 030° Intercept cleared route
---	--	---

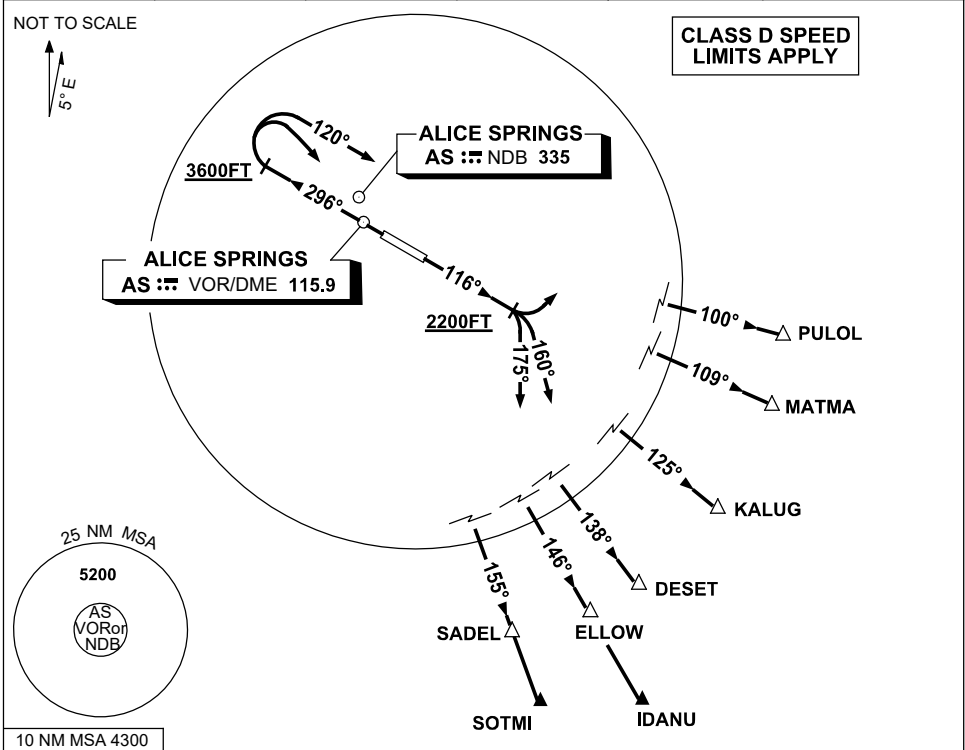
Changes: RUPUS REPLACES SCOTI, Editorial.

BASDP01-177

**STANDARD INSTRUMENT DEPARTURES (SID)
RWY 12/30 SOUTH EAST
ALICE SPRINGS, NT (YBAS)**

30 NOV 2023

ATIS 123.0 115.9 335	AWIS 134.05	TWR 118.3	FIA (AH) ML CEN 119.8	CTAF+AFRU (AH) 118.3	Bearings are Magnetic Elevations in FEET AMSL
-------------------------	----------------	--------------	--------------------------	-------------------------	--



<p>PULOL THREE DEPARTURE MATMA ONE DEPARTURE KALUG THREE DEPARTURE SADEL FOUR DEPARTURE</p> <p>RWY 30 GRAD 3.8% TO 3600ft THENCE 3.3%</p> <ul style="list-style-type: none"> Track 296° At or ABV 3600ft but not before abeam AS VOR or NDB turn RIGHT <p>For PULOL and MATMA</p> <ul style="list-style-type: none"> Track 120° Intercept cleared route <p>For KALUG, DESET, IDANU, ELLOW, SADEL and SOTMI</p> <ul style="list-style-type: none"> Track DCT to AS VOR or AS NDB Overhead AS VOR or AS NDB Intercept cleared route 	<p>IDANU THREE DEPARTURE DESET FOUR DEPARTURE ELLOW THREE DEPARTURE SOTMI ONE DEPARTURE</p> <p>RWY 12 GRAD 3.3%</p> <ul style="list-style-type: none"> Track 116° At or ABV 2200ft <p>For PULOL and MATMA</p> <ul style="list-style-type: none"> Turn LEFT Intercept cleared route <p>For KALUG, DESET and IDANU</p> <ul style="list-style-type: none"> Turn RIGHT Track 160° Intercept cleared route <p>For ELLOW, SADEL and SOTMI</p> <ul style="list-style-type: none"> Turn RIGHT Track 175° Intercept cleared route
---	---

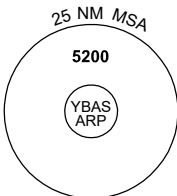
Changes: SOTMI REPLACES SARAH, MATMA REPLACES STEEL, Editorial. BASDP02-177

STANDARD INSTRUMENT DEPARTURES (SID)
RWY 12/30 WEST (RNAV)
ALICE SPRINGS, NT (YBAS)

30 NOV 2023

ATIS 123.0 115.9 335	AWIS 134.05	TWR 118.3	FIA (AH) ML CEN 119.8	CTAF+AFRU (AH) 118.3	Bearings are Magnetic Elevations in FEET AMSL
-------------------------	----------------	--------------	--------------------------	-------------------------	--

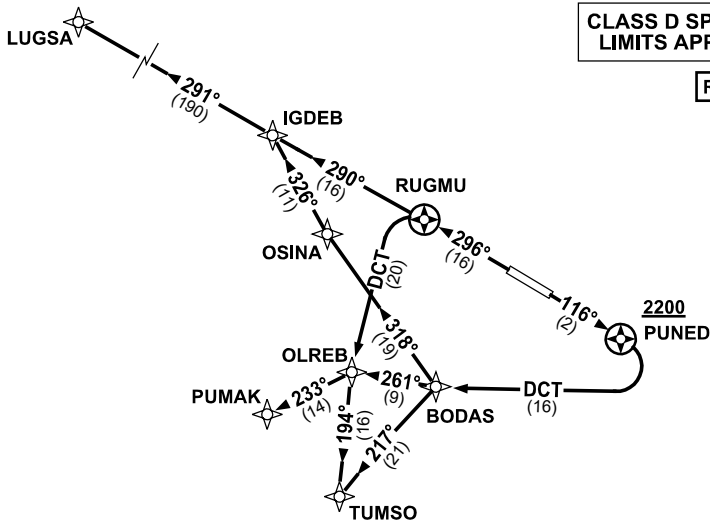
NOT TO SCALE



10 NM MSA 4300

**CLASS D SPEED
LIMITS APPLY**

RNP 1



TUMSO ONE DEPARTURE
PUMAK ONE DEPARTURE
LUGSA ONE DEPARTURE

RWY 30

GRAD 3.9% TO 3300ft thence 3.3%

- Track 296° to RUGMU

FROM RUGMU

For LUGSA

- Track 290° to IGDEB
- Track 291° to LUGSA, thence as cleared

For PUMAK

- Turn LEFT, track DCT to OLREB
- Turn RIGHT, track 233° to PUMAK, thence as cleared

For TUMSO

- Turn LEFT, track DCT to OLREB,
- Track 194° to TUMSO, thence as cleared

RWY 12

GRAD 3.3%

- Track 116° to PUNED

Cross PUNED AT or ABV 2200FT

- Turn RIGHT, track DCT to BODAS

FROM BODAS

For TUMSO

- Turn LEFT, track 217° to TUMSO thence as cleared

For PUMAK

- Track 261° to OLREB
- Turn LEFT, track 233° to PUMAK, thence as cleared

For LUGSA

- Turn RIGHT, track 318° to OSINA
- Turn RIGHT, track 326° to IGDEB,
- Turn LEFT, track 291° to LUGSA, thence as cleared

Changes: LUGSA REPLACES LEESA, Editorial.

BASDP03-177

FOR CASA APPROVED OPERATORS ONLY

USE QNH

MUDMO ONE DEPARTURE

ALICE SPRINGS, NT (YBAS)

21 MAR 2024

Apt Elev 1789'	Trans ALT 10000'	ATIS 123.0 115.9 335	AWIS 134.05	TWR 118.3	FIA (AH) ML CEN 119.8	CTAF + AFRU (AH) 118.3
MUDMO ONE RNAV (RNP) DEPARTURE RNP 0.30 (MUDMO1.MUDMO) RWY 12		Minimum climb gradient (All Engines) 5.4% to 2800FT.				

TAKE-OFF:

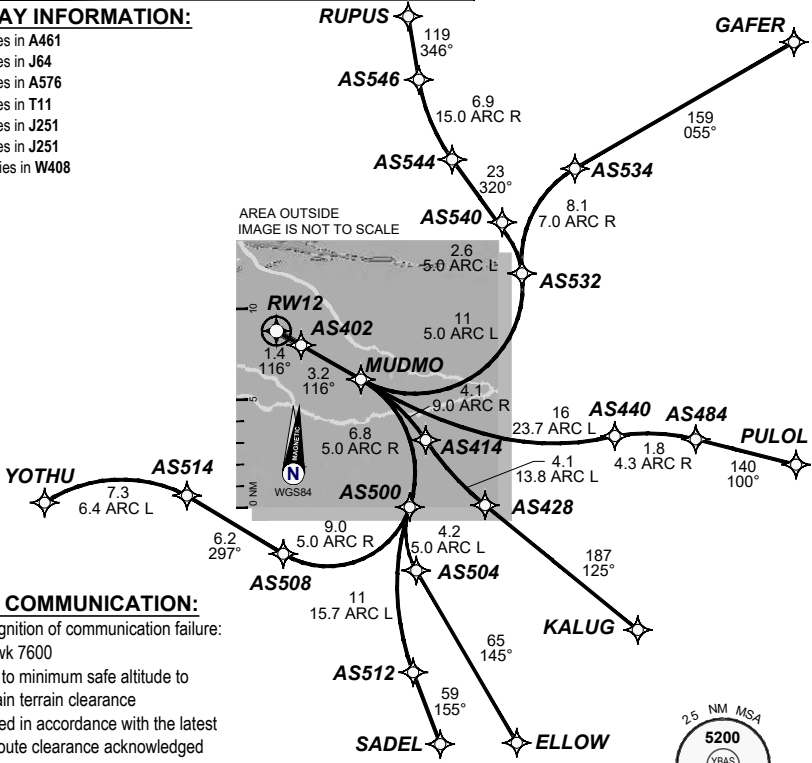
RWY 12: Fly the RNAV (RNP) track to **MUDMO**. Thence:

TRANSITIONS:

- (MUDMO1.ELLOW):** Fly the RNAV (RNP) track to **ELLOW**.
- (MUDMO1.GAFER):** Fly the RNAV (RNP) track to **GAFER**.
- (MUDMO1.KALUG):** Fly the RNAV (RNP) track to **KALUG**.
- (MUDMO1.PULOL):** Fly the RNAV (RNP) track to **PULOL**.
- (MUDMO1.SADEL):** Fly the RNAV (RNP) track to **SADEL**.
- (MUDMO1.RUPUS):** Fly the RNAV (RNP) track to **RUPUS**.
- (MUDMO1.YOTHU):** Fly the RNAV (RNP) track to **YOTHU**.

AIRWAY INFORMATION:

- AS504 lies in A461
- AS534 lies in J64
- AS428 lies in A576
- AS484 lies in T11
- AS512 lies in J251
- AS546 lies in J251
- YOTHU lies in W408



LOST COMMUNICATION:

- On recognition of communication failure:
- Squawk 7600
 - Climb to minimum safe altitude to maintain terrain clearance
 - Proceed in accordance with the latest ATC route clearance acknowledged

202310241855COPYRIGHT 2023 GE, USA, GE PROPRIETARY INFORMATION

10 NM MSA 4300

Changes: from SUP H81/23

BASDP04-178

DO NOT USE FOR NAVIGATION

Prepared by GE Aviation



FOR CASA APPROVED OPERATORS ONLY
USE QNH **OCTAV SIX DEPARTURE**
ALICE SPRINGS, NT (YBAS)

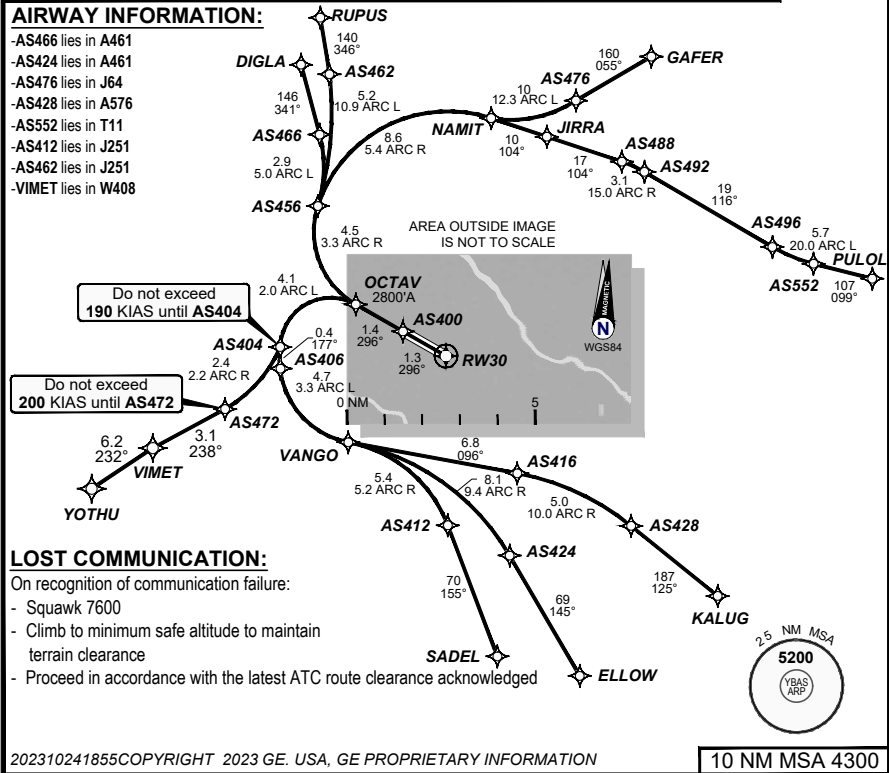
21 MAR 2024

Apt Elev 1789'	Trans ALT 10000'	ATIS 123.0 115.9 335	AWIS 134.05	TWR 118.3	FIA (AH) ML CEN 119.8	CTAF + AFRU (AH) 118.3
--------------------------	----------------------------	--------------------------------	-----------------------	---------------------	---------------------------------	----------------------------------

OCTAV SIX RNAV (RNP) DEPARTURE RNP 0.30 (OCTAV6.OCTAV) RWY 30	Minimum climb gradient (All Engines) 11.6% to 2800FT.

TAKE-OFF:
RWY 30: Fly the RNAV (RNP) track to **OCTAV** and cross **OCTAV** at or above **2800'**. Thence:

TRANSITIONS:
(OCTAV6.DIGLA): Fly the RNAV (RNP) track to **DIGLA**.
(OCTAV6.ELLOW): Fly the RNAV (RNP) track to **ELLOW**. Do not exceed **190 KIAS** until **AS404**.
(OCTAV6.GAFER): Fly the RNAV (RNP) track to **GAFER**.
(OCTAV6.KALUG): Fly the RNAV (RNP) track to **KALUG**. Do not exceed **190 KIAS** until **AS404**.
(OCTAV6.PULOL): Fly the RNAV (RNP) track to **PULOL**.
(OCTAV6.SADEL): Fly the RNAV (RNP) track to **SADEL**. Do not exceed **190 KIAS** until **AS404**.
(OCTAV6.RUPUS): Fly the RNAV (RNP) track to **RUPUS**.
(OCTAV6.YOTHU): Fly the RNAV (RNP) track to **YOTHU**. Do not exceed **190 KIAS** until **AS404**.
 Do not exceed **200 KIAS** until **AS472**.



Changes: from SUP H81/23

BASDP05-178

DO NOT USE FOR NAVIGATION

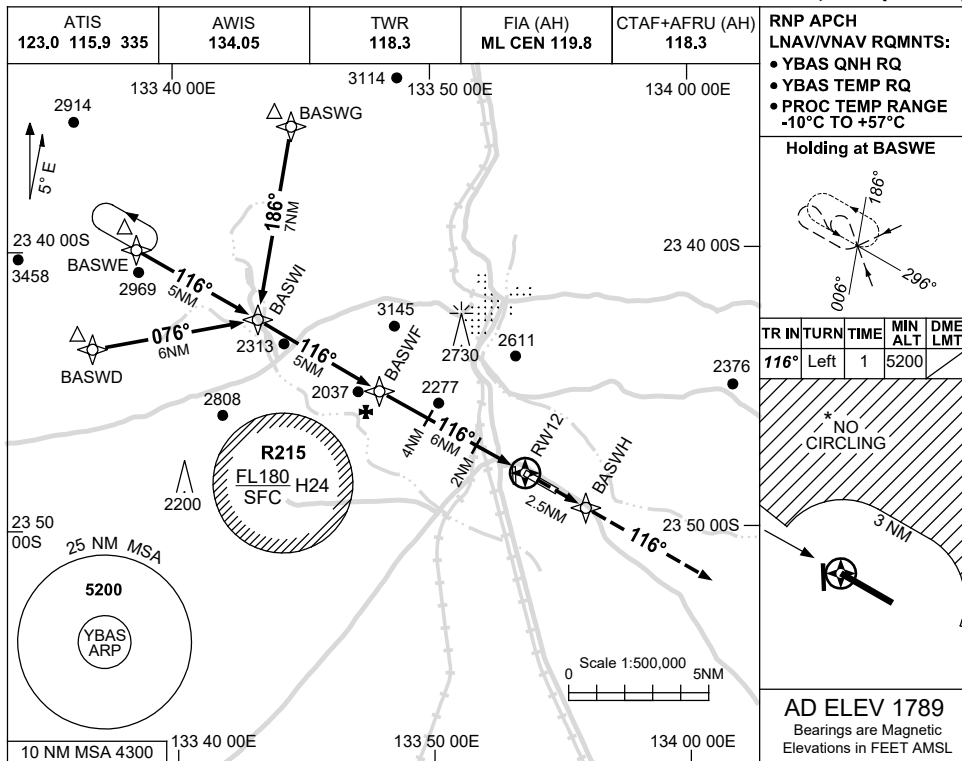


USE QNH

RNP Z RWY 12

ALICE SPRINGS, NT (YBAS)

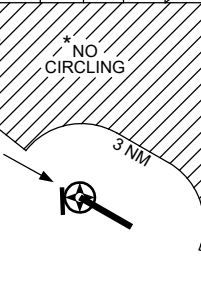
1 DEC 2022



RNP APCH
LNAV/VNAV RQMNTS:
 • YBAS QNH RQ
 • YBAS TEMP RQ
 • PROC TEMP RANGE
 -10°C TO +57°C

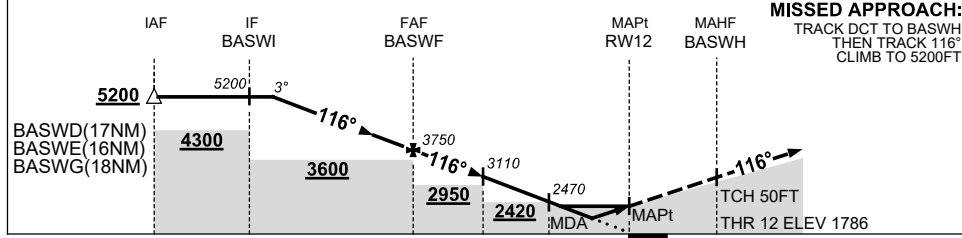
Holding at BASWE

TR IN	TURN	TIME	MIN ALT	DME LMT
116°	Left	1	5200	



AD ELEV 1789
 Bearings are Magnetic
 Elevations in FEET AMSL

NM TO NEXT WPT	4.6	4	3	2	1	BASWF	5	4	3	2	1.5	1	RW12
ALT (3° APCH PATH)	5200	5020	4700	4380	4070	3750	3430	3110	2790	2470	2320	2140	



MISSED APPROACH:
 TRACK DCT TO BASWH,
 THEN TRACK 116°.
 CLIMB TO 5200FT.

NOTES

CATEGORY	A	B	C	D
LNAV/VNAV		2140	(354-1.1)	
LNAV		2320	(531-2.1)	
CIRCLING *	2570	(781-2.4)	2990	(1201-4.0) 2990(1201-5.0)
ALTERNATE		(1281-4.4)	(1701-6.0)	(1701-7.0)

* 1. NO CIRCLING NORTH OF RWY 12/30 BEYOND 3NM.

Changes: CHART TITLE, PBN SPECIFICATION BOX.

BASGN01-173

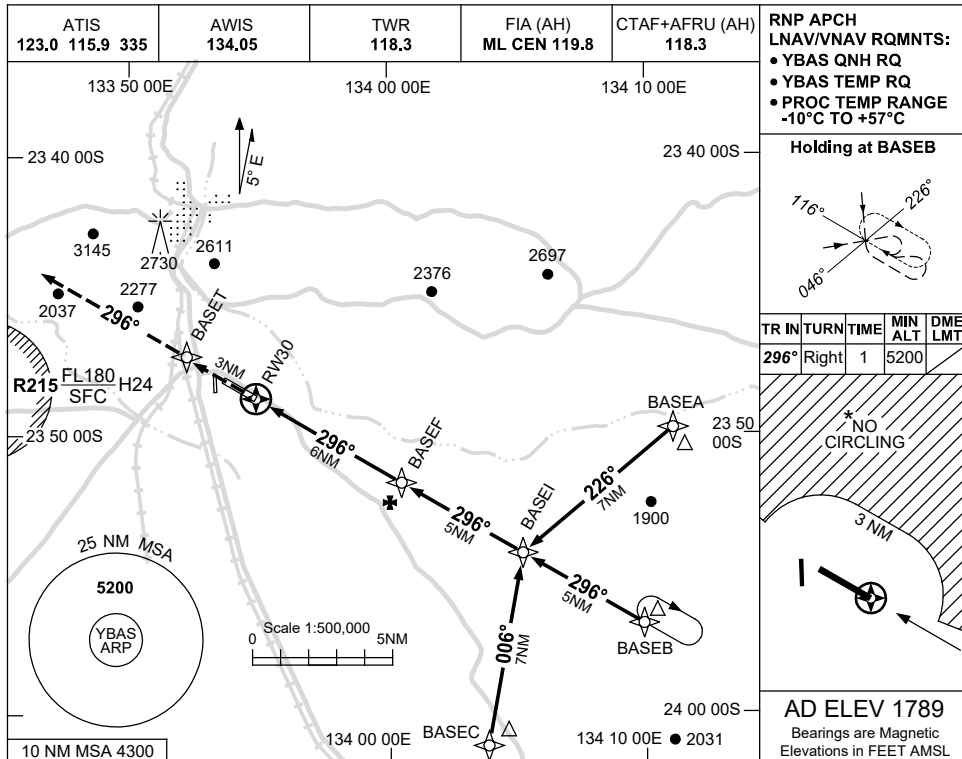


USE QNH

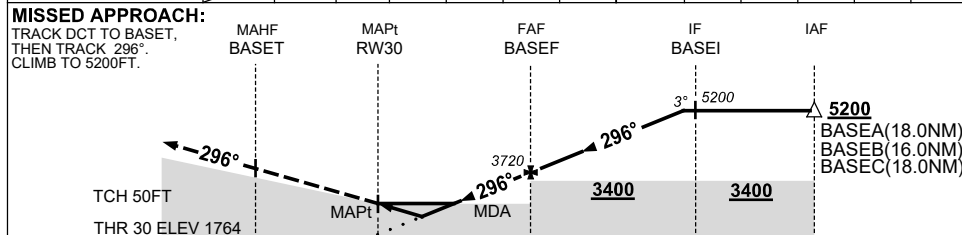
RNP Z RWY 30

1 DEC 2022

ALICE SPRINGS, NT (YBAS)



NM TO NEXT WPT	RW30	0.9	1.4	2	3	4	5	BASEF	1	2	3	4	4.6
ALT (3° APCH PATH)		2090	2260	2450	2770	3090	3410	3720	4040	4360	4680	5000	5200



NOTES

CATEGORY	A	B	C	D
LNAV/VNAV		2090 (326-1.8)		
LNAV		2260 (496-2.8)		
CIRCLING *	2570 (781-2.4)	2990 (1201-4.0)	2990 (1201-5.0)	
ALTERNATE	(1281-4.4)	(1701-6.0)	(1701-7.0)	

* 1. NO CIRCLING NORTH OF RWY 12/30 BEYOND 3NM.

Changes: CHART TITLE, PBN SPECIFICATION BOX.

BASGN02-173

1 DEC 2022

ALICE SPRINGS, NT (YBAS)

GE PROPRIETARY INFORMATION

ATIS 123.0 115.9 335			AWIS 134.05		TWR 118.3	FIA (AH) ML CEN 119.8	CTAF + AFRU (AH) 118.3
RNP AR RNV M 12		Apt Elev. 1789' TDZE 1786'	AS624 (FAF) GP 3710' (2.80°)		Trans Level FL110		

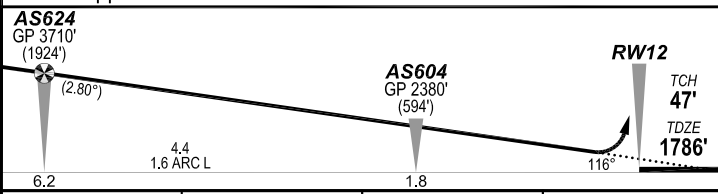


AREA OUTSIDE IMAGE IS NOT TO SCALE

AREA OUTSIDE IMAGE IS NOT TO SCALE

MISSED APPROACH:

Climb to **5200'** via the RNP AR
Missed Approach track to **BASEB**.



NOTES:

- YBAS ACT QNH RQ.
- Minimum MAP gradient (All Engines) 3.0% to 5200FT.
- APCH Path does not coincide with PAPI glide path 3°.

AS624 GP 3710' (1924') (2.80°)		AS604 GP 2380' (594')		RWY 12 TCH 47' TDZE 1786'	
6.2		4.4 1.6 ARC L		1.8	
RNP 0.30			DA(H) 2104' (318')		
			HIALS OUT		
C	C	C	C	800 m	1700 m



10 NM MSA 4300

FOR CASA APPROVED OPERATORS ONLY

Changes: PROC NAME, SPEED NOTE AS624, RNAV (RNP) TO RNP AR.

DO NOT USE FOR NAVIGATION

Prepared by GE Aviation

BASGN03-173



202208021123COPYRIGHT 2022 NAVERUS, INC. USA

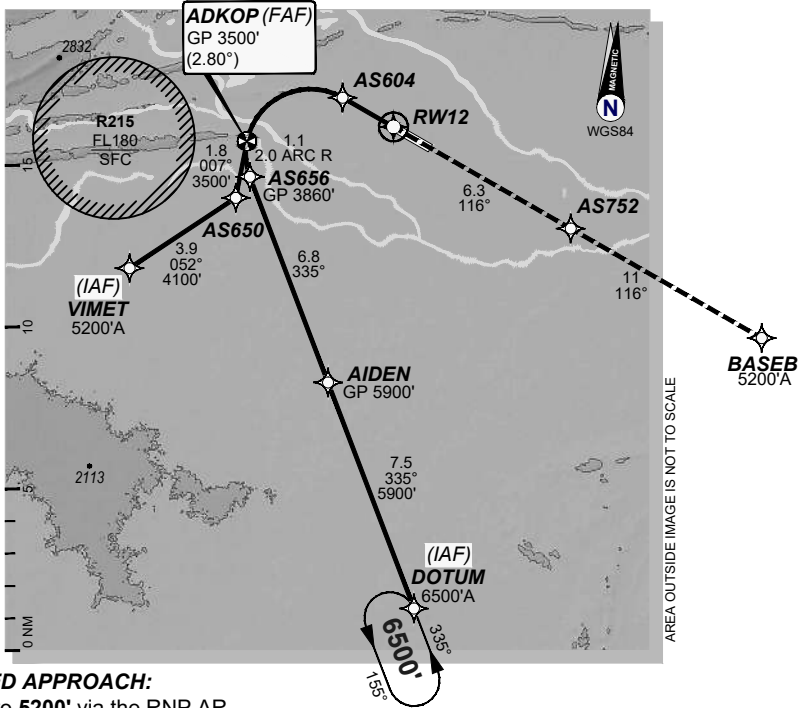
USE QNH

RNP P RWY 12 (AR)

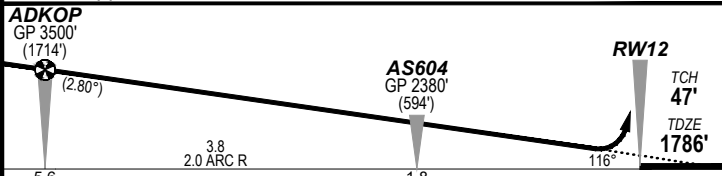
21 MAR 2024

ALICE SPRINGS, NT (YBAS)

ATIS	AWIS	TWR	FIA (AH)	CTAF + AFRU (AH)
123.0 115.9 335	134.05	118.3	ML CEN 119.8	118.3
RNP AR RNP P 12	Apt Elev. 1789' TDZE 1786'	ADKOP (FAF) GP 3500' (2.80°)	Trans Level FL110	



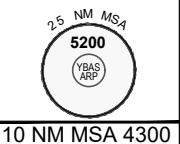
MISSED APPROACH:
Climb to **5200'** via the RNP AR
Missed Approach track to **BASEB**.



NOTES:

- YBAS ACT QNH RQ.
- Minimum MAP gradient (All Engines) 3.0% to 5200FT.
- APCH Path does not coincide with PAPI glide path 3°.

RNP 0.30	
DA(H) 2104' (318')	
HIALS OUT	
C	C
800 m	1700 m



FOR CASA APPROVED OPERATORS ONLY

202310241957COPYRIGHT 2023 GE Digital USA, GE PROPRIETARY INFORMATION

Changes: from SUP H81/23

DO NOT USE FOR NAVIGATION

BASGN04-178

© Airservices Australia 2024

Prepared by GE Aviation



USE QNH

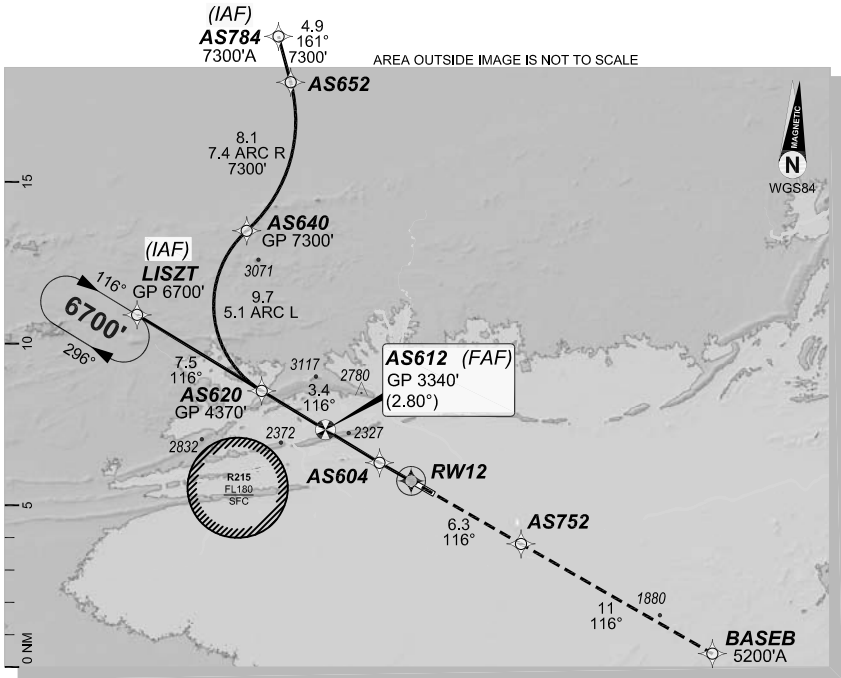
RNP U RWY 12 (AR)

1 DEC 2022

ALICE SPRINGS, NT (YBAS)

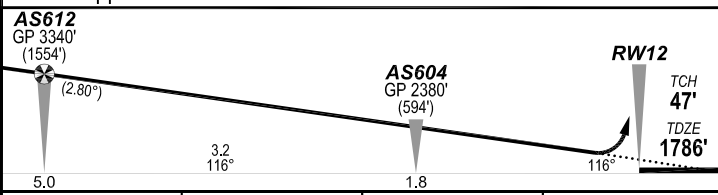
GE PROPRIETARY INFORMATION

ATIS 123.0 115.9 335			AWIS 134.05		TWR 118.3	FIA (AH) ML CEN 119.8	CTAF + AFRU (AH) 118.3
RNP AR RNV U 12		Apt Elev. 1789' TDZE 1786'	AS612 (FAF) GP 3340' (2.80°)		Trans Level FL110		



MISSED APPROACH:

Climb to **5200'** via the RNP AR
Missed Approach track to **BASEB**.



NOTES:

- YBAS ACT QNH RQ.
- Minimum MAP gradient (All Engines) 3.0% to 5200FT.
- APCH Path does not coincide with PAPI glide path 3°.

AS612 GP 3340' (1554')		AS604 GP 2380' (594')		RWY12 TCH 47'	
5.0		3.2		116°	
5.0		1.8		116°	
				RNP 0.30	
				DA(H) 2104' (318')	
				HIALS OUT	
C	C	C	C	800 m	1700 m



10 NM MSA 4300

FOR CASA APPROVED OPERATORS ONLY

202208021125COPYRIGHT 2022 NAVERUS, INC. USA

Changes: PROC NAME, RNAV (RNP) TO RNP AR.

BASGN05-173

DO NOT USE FOR NAVIGATION

Prepared by GE Aviation



USE QNH

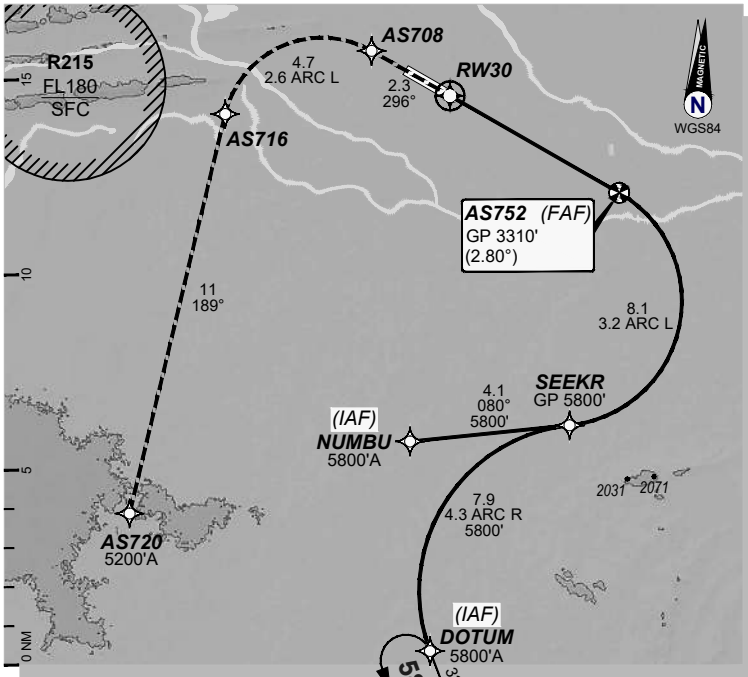
RNP P RWY 30 (AR)

21 MAR 2024

ALICE SPRINGS, NT (YBAS)

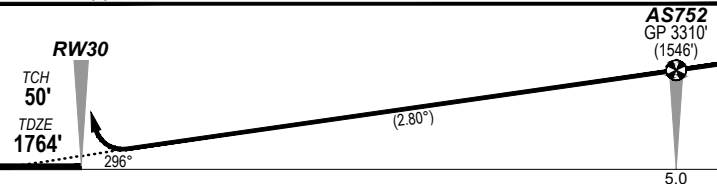
ATIS	AWIS	TWR	FIA (AH)	CTAF + AFRU (AH)
123.0 115.9 335	134.05	118.3	ML CEN 119.8	118.3

RNP AR RNP P 30	Apt Elev. 1789' TDZE 1764'	AS752 (FAF) GP 3310' (2.80°)	Trans Level FL110
--------------------	-------------------------------	---------------------------------	----------------------



MISSED APPROACH:

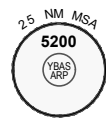
Climb to 5200' via the RNP AR
Missed Approach track to AS720.



NOTES:

- YBAS ACT QNH RQ.
- Minimum MAP gradient (All Engines) 3.0% to 5200FT.
- APCH Path does not coincide with PAPI glide path 3°.

			RNP 0.30
			DA(H) 2067' (303')
C	C	C	1600 m



FOR CASA APPROVED OPERATORS ONLY

202310241959COPYRIGHT 2023 GE Digital USA, GE PROPRIETARY INFORMATION

Changes: from SUP H81/23

DO NOT USE FOR NAVIGATION

BASGN07-178

© Airservices Australia 2024

Prepared by GE Aviation



USE QNH

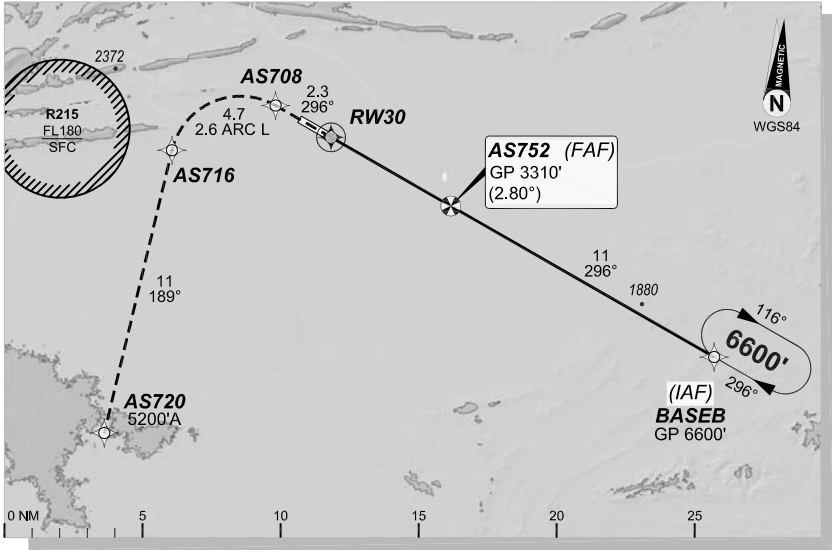
RNP U RWY 30 (AR)

1 DEC 2022

ALICE SPRINGS, NT (YBAS)

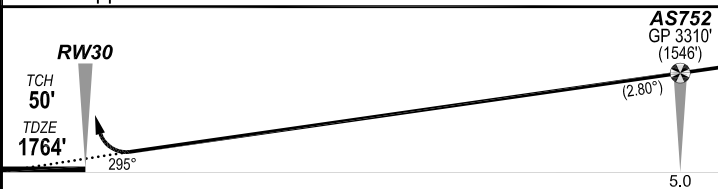
GE PROPRIETARY INFORMATION

ATIS 123.0 115.9 335			AWIS 134.05		TWR 118.3	FIA (AH) ML CEN 119.8	CTAF + AFRU (AH) 118.3
RNP AR RNV U 30	Apt Elev. 1789' TDZE 1764'	AS752 (FAF) GP 3310' (2.80°)		Trans Level FL110			



MISSED APPROACH:

Climb to **5200'** via the RNP AR
Missed Approach track to **AS720**.



NOTES:

- YBAS ACT QNH RQ.
- Minimum MAP gradient (All Engines) 3.0% to 5200FT.
- APCH Path does not coincide with PAPI glide path 3°.

				RNP 0.30
				DA(H) 2067' (303')
C	C	C	C	1600 m



10 NM MSA 4300

FOR CASA APPROVED OPERATORS ONLY

Changes: PROC NAME, RNAV (RNP) TO RNP AR.

DO NOT USE FOR NAVIGATION

Prepared by GE Aviation

BASGN08-173

202208021126COPYRIGHT. 2022 NAVERUS, INC. USA



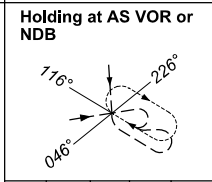
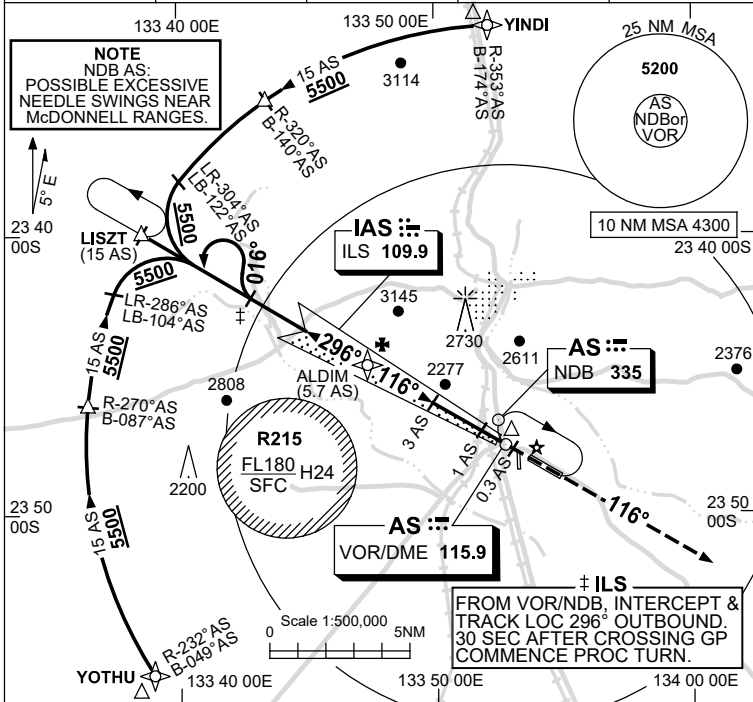
USE QNH

ILS-Y or LOC-Y RWY 12
ALICE SPRINGS, NT (YBAS)

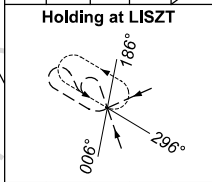
2 DEC 2021

ATIS 123.0 115.9 335	AWIS 134.05	TWR 118.3	FIA (AH) ML CEN 119.8	CTAF+AFRU (AH) 118.3
-------------------------	----------------	--------------	--------------------------	-------------------------

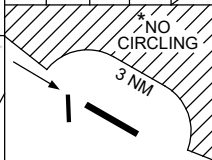
NAVAID RQ:
 • DME or GNSS



TR IN	TURN	TIME	MIN ALT	DME LMT
296°	Right	1	5500	

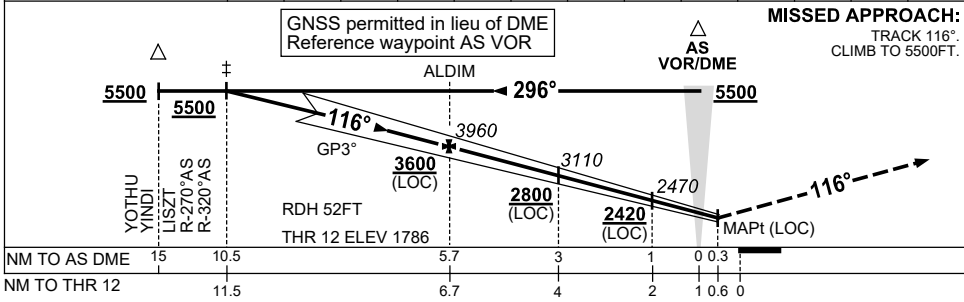


TR IN	TURN	TIME	MIN ALT	DME LMT
116°	Left	1	5500	



AD ELEV 1789
 Bearings are Magnetic
 Elevations in FEET AMSL

NM TO AS DME	10.5	10	9	8	7	6	5.7	5	4	3	2	1	0.5
ALT (3° APCH PATH)	5500	5330	5010	4690	4370	4060	3960	3740	3420	3110	2780	2470	2320



CATEGORY	A	B	C	D
S-I ILS		2100 (314) 0.8		
S-I LOC		2320 (531-2.1)		
CIRCLING*	2570 (781-2.4)		2990 (1201-4.0)	2990 (1201-5.0)
ALTERNATE*	(1281-4.4)		(1701-6.0)	(1701-7.0)

- NOTES**
- MAX IAS:
 HOLDING: 185KT.
 HLDG NOT ABOVE
 FL120.
 - SPECIAL ALTN MNM
 800/4.0KM.
 - NO CIRCLING N
 OF RWY 12/30
 BEYOND 3NM.

Changes: VIS.

BASII01-169

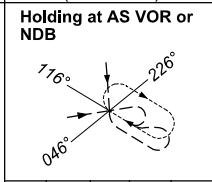
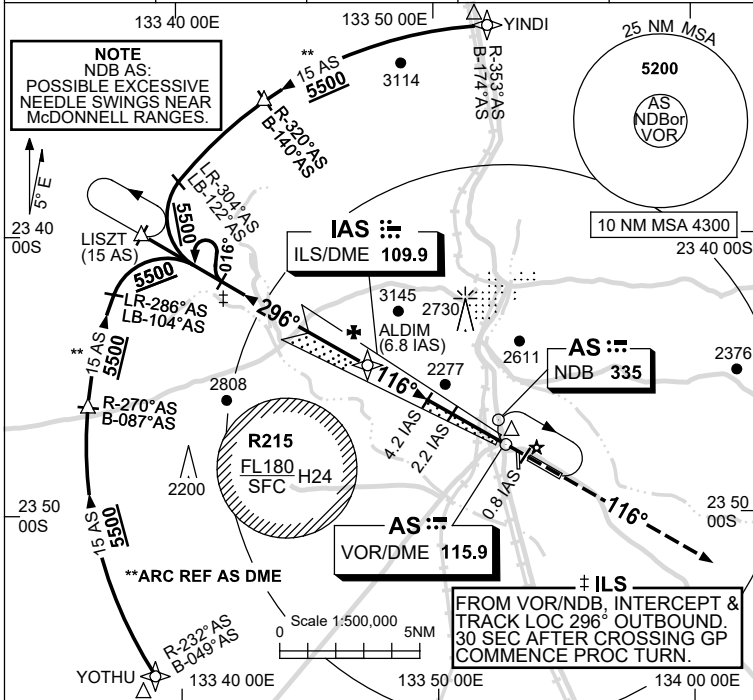
USE QNH

ILS-Z or LOC-Z RWY 12
ALICE SPRINGS, NT (YBAS)

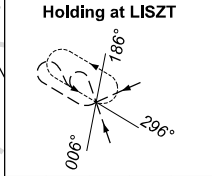
23 MAR 2023

ATIS 123.0 115.9 335	AWIS 134.05	TWR 118.3	FIA (AH) ML CEN 119.8	CTAF+AFRU (AH) 118.3
-------------------------	----------------	--------------	--------------------------	-------------------------

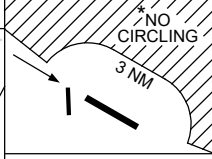
NAVAID RQ:
 • DME or GNSS (ILS)
 • DME (LOC ONLY)



TR IN	TURN	TIME	MIN ALT	DME LMT
296°	Right	1	5500	

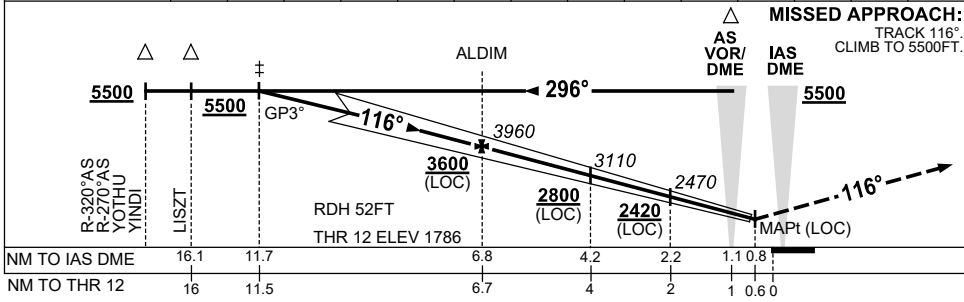


TR IN	TURN	TIME	MIN ALT	DME LMT
116°	Left	1	5500	



AD ELEV 1789
 Bearings are Magnetic
 Elevations in FEET AMSL

NM TO IAS DME	11.7	11	10	9	8	6.8	6	5	4.2	4	3	2.2	2	1.7
ALT (3° APCH PATH)	5500	5290	4970	4650	4330	3960	3690	3380	3110	3060	2740	2470	2420	2320



NOTES

- MAX IAS:
 HOLDING: 185KT.
 HLDG NOT ABOVE
 FL120.
- SPECIAL ALTN MNM
 800/4.0KM.
- NO CIRCLING N
 OF RWY 12/30
 BEYOND 3NM.

CATEGORY	A	B	C	D
S-I ILS		2100 (314) 0.8		
S-I LOC		2320 (531-2.1)		
CIRCLING*	2570 (781-2.4)		2990 (1201-4.0)	2990 (1201-5.0)
ALTERNATE*	(1281-4.4)		(1701-6.0)	(1701-7.0)

Changes: Editorial.

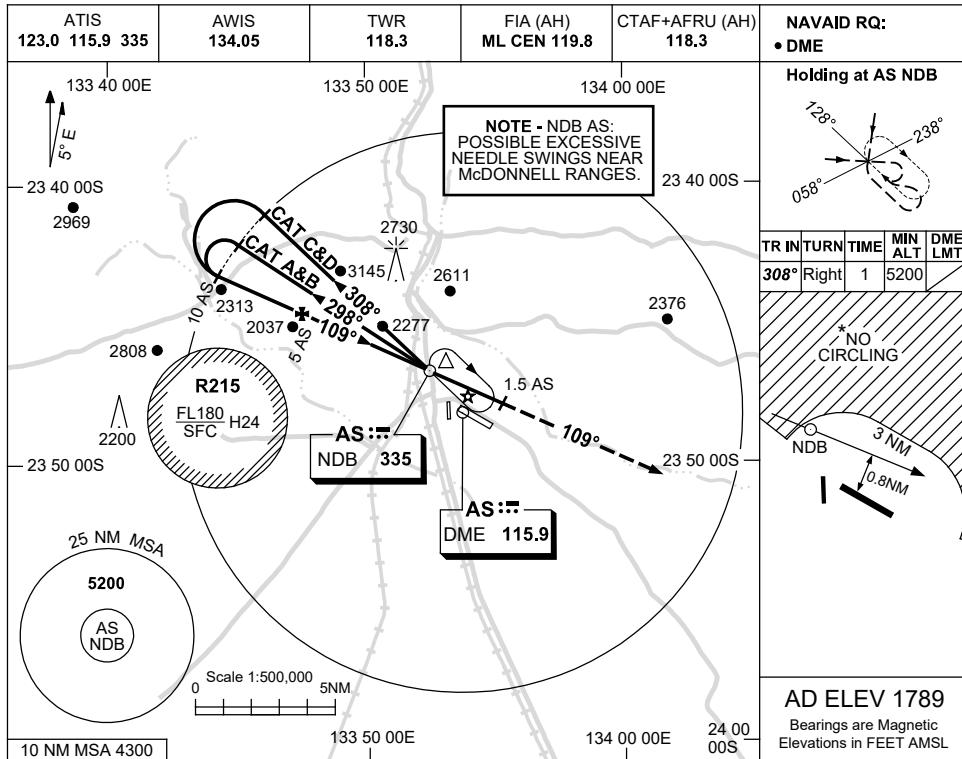
BASII02-174

USE QNH

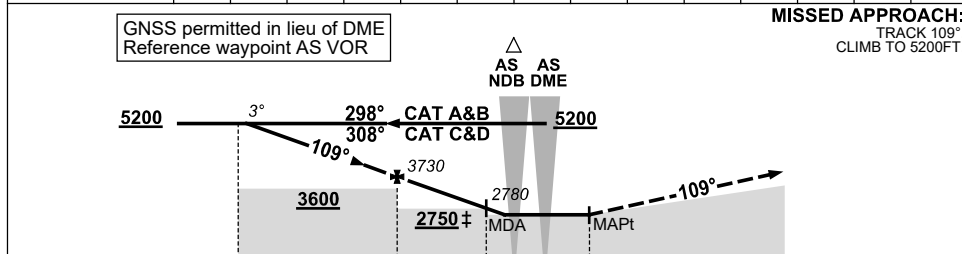
NDB-B

ALICE SPRINGS, NT (YBAS)

17 JUN 2021



DME DIST	9.6	9	8	7	6	5	4	3	2	1.3				
ALT (3° APCH PATH)	5200	5010	4700	4380	4050	3730	3410	3090	2780	2570				



- NOTES**
- MAX IAS:
 INITIAL : 210KT.
 HOLDING : 210KT.
 HLDG NOT ABOVE FL120.
 - CAT C&D ACFT DO NOT DESCEND BLW CIRCLING MINIMA.
 - NO CIRCLING N OF RWY 12/30 BEYOND 3NM.

CATEGORY	A	B	C	D
CIRCLING *	2570 (781-2.4)		2990 (1201-4.0)	2990 (1201-5.0)
ALTERNATE	(1281-4.4)		(1701-6.0)	(1701-7.0)

Changes: COORD FMT, Editorial.

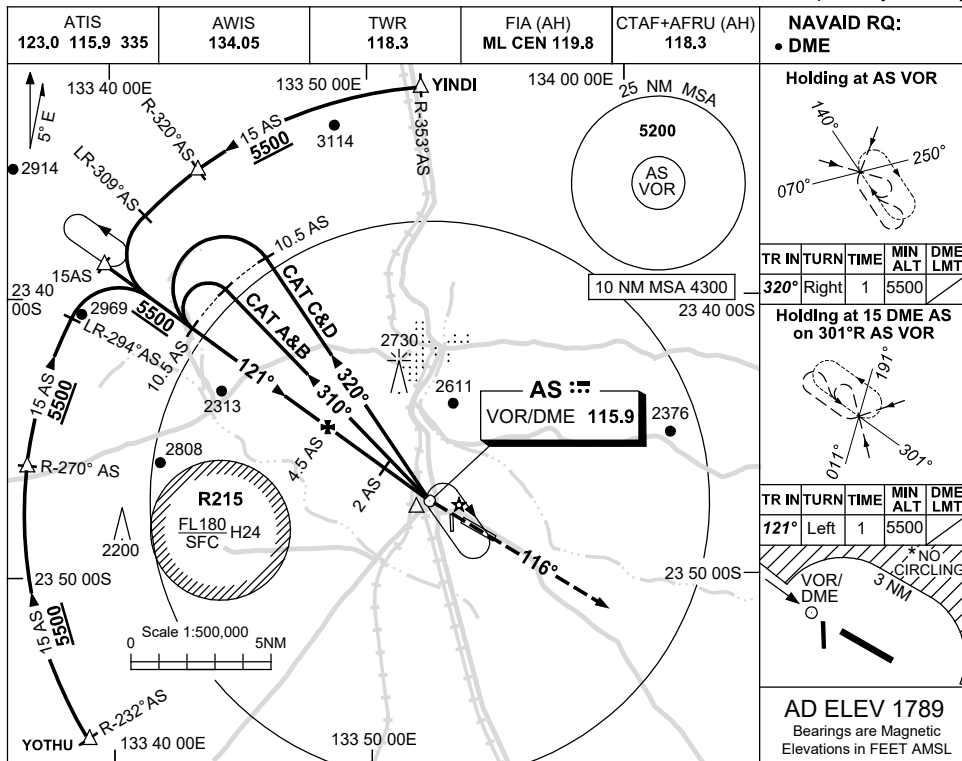
BASNB02-167

USE QNH

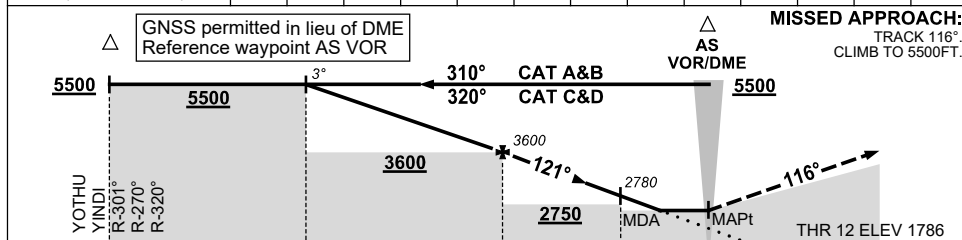
VOR RWY 12

ALICE SPRINGS, NT (YBAS)

2 DEC 2021



DIST BY DME	10.5	10	9	8	7	6	5	4.5	4	3	2	1	
ALT (3° APCH PATH)	5500	5330	5010	4690	4370	4050	3740	3600	3420	3100	2780	2450	



NM TO AS DME

MISSED APPROACH:
TRACK 116°.
CLIMB TO 5500FT.

CATEGORY	A	B	C	D
S-I VOR/DME	2450 (661-2.9)			
CIRCLING *	2570 (781-2.4)		2990(1201-4.0) 2990(1201-5.0)	
ALTERNATE ‡	(1281-4.4)		(1701-6.0) (1701-7.0)	

- NOTES**
- MAX IAS:
INITIAL : 210KT.
HOLDING: 185KT.
HLDG NOT ABOVE FL120.
 - SPECIAL ALTN MNM 800/4.0KM.
 - NO CIRCLING N OF RWY 12/30 BEYOND 3NM.

Changes: VIS.

BASV001-169

