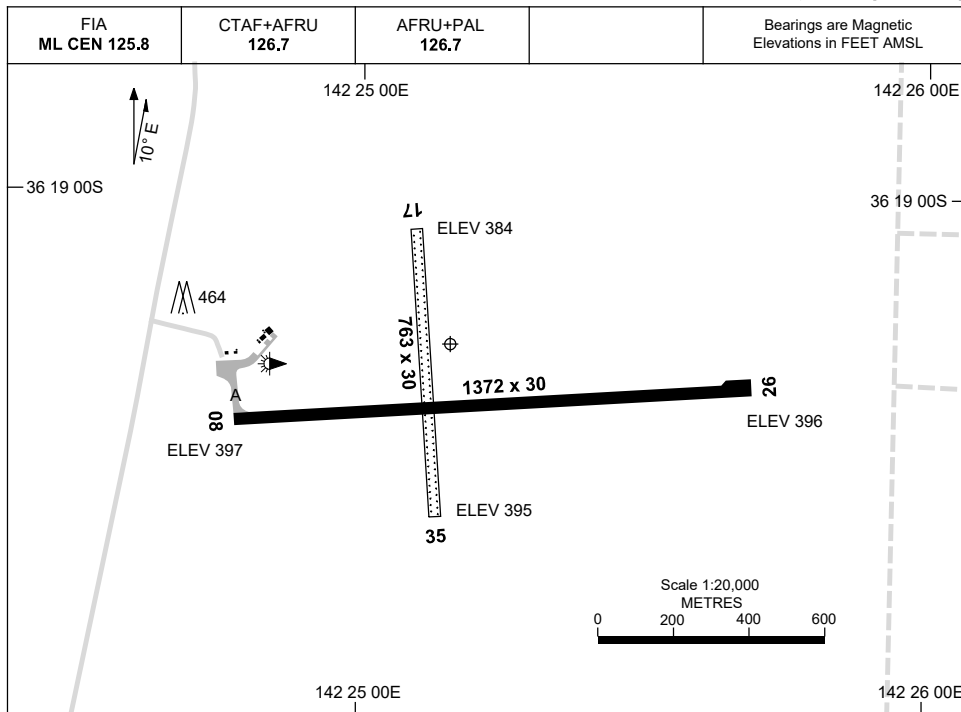


7 SEP 2023

AD ELEV 397
36 19 16S 142 25 10E

AERODROME CHART
WARRACKNABEAL, VIC (YWKB)



	AERODROME LIGHTING	
RWY	TAXIWAY : BLUE EDGE RL : AFRU+PAL 126.7	
08 <small>076</small>	LIRL	
<small>256</small> 26	LIRL	
17 <small>166</small>	NIL	
<small>346</small> 35	NIL	

NOTES

1. FIA FREQ 125.8 AVBL CIRCUIT AREA.
2. AWIS (PHONE) 03 8470 3223

Changes: TWY.

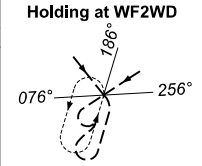
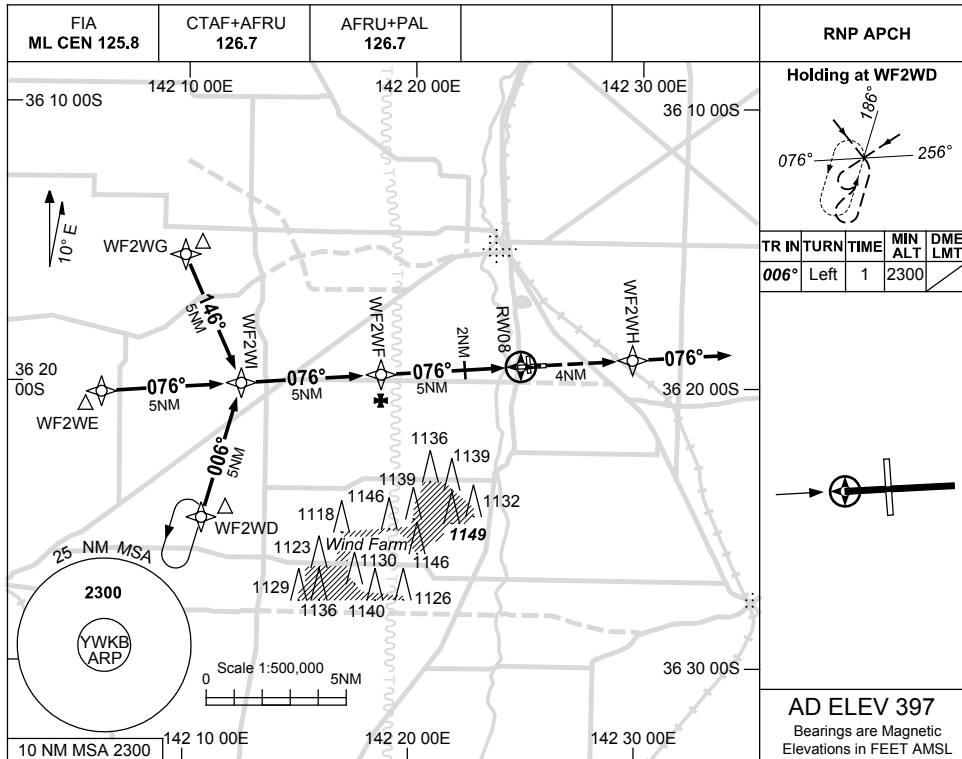
WKBAD01-176

USE QNH

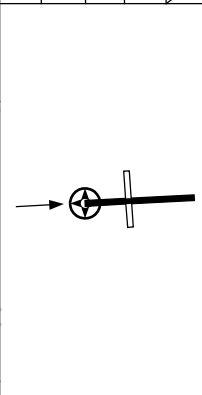
RNP RWY 08

7 SEP 2023

WARRACKNABEAL, VIC (YWKB)

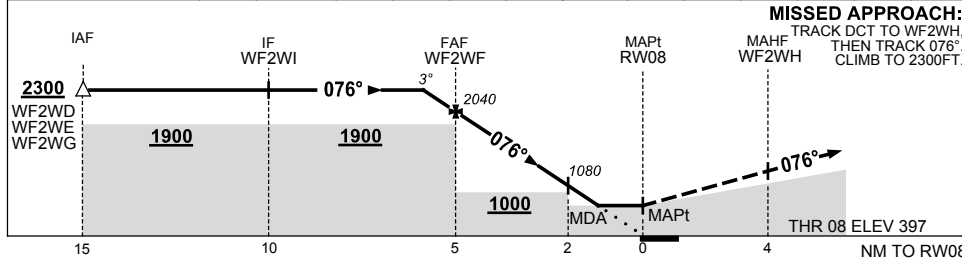


TR	IN	TURN	TIME	MIN ALT	DME LMT
006°	Left	1	2300		



AD ELEV 397
Bearings are Magnetic
Elevations in FEET AMSL

NM TO NEXT WPT	0.8	WF2WF	4	3	2	1.4	RW08
ALT (3° APCH PATH)	2300	2040	1720	1400	1080	890	



MISSED APPROACH:
TRACK DCT TO WF2WH,
THEN TRACK 076°.
CLIMB TO 2300FT.

NOTES

CATEGORY	A	B	C	D
LNAV	890 (493-2.8)			NOT APPLICABLE
CIRCLING	990 (593-2.4)	1090 (693-4.0)		
ALTERNATE	(1093-4.4)	(1193-6.0)		

- MAX IAS:
INITIAL : 210KT.
- AWIS (PHONE)
03 8470 3223
- HOLDING
OVERLAYS YHSM
RNP RWY 08 &
YHSM RNP RWY 26

Changes: REVISED PROC, CHANGE OF OWNERSHIP, Editorial.

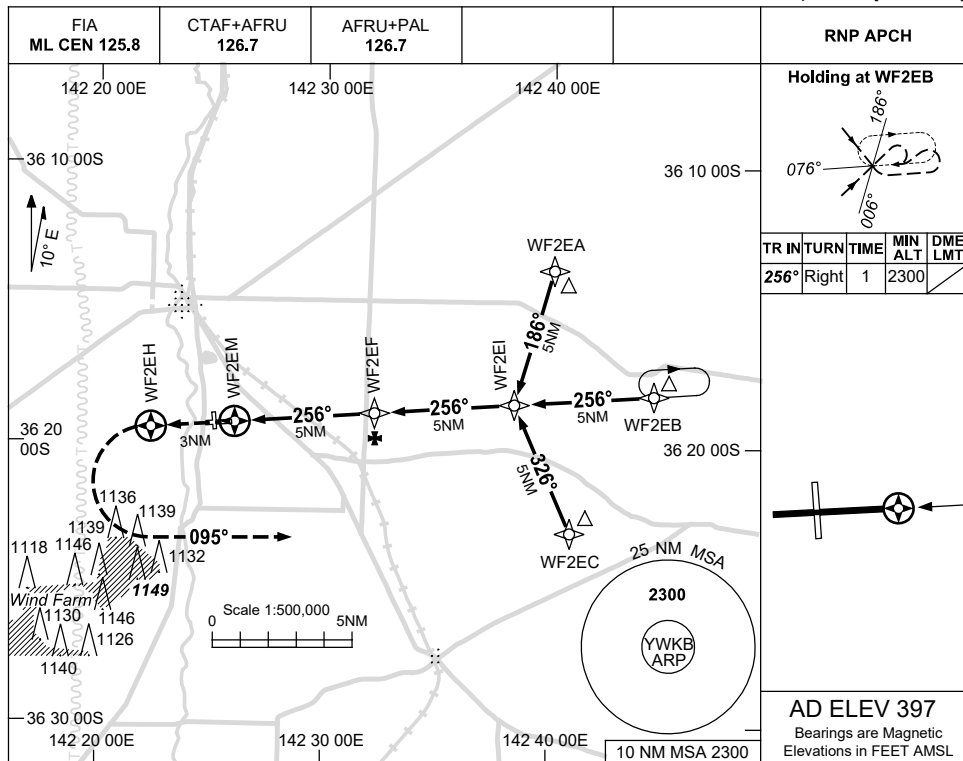
WKGBN01-176

USE QNH

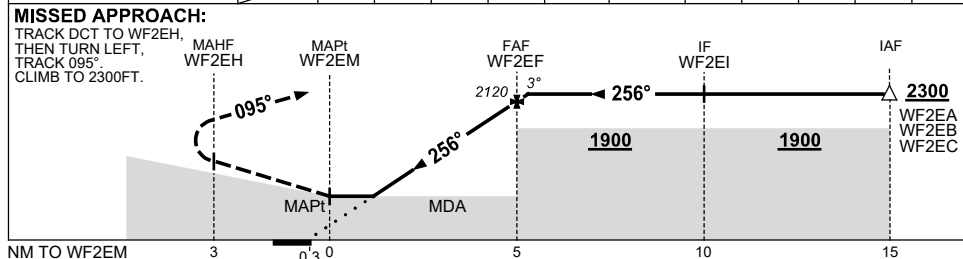
RNP E

7 SEP 2023

WARRACKNABEAL, VIC (YWKB)



NM TO NEXT WPT	WF2EM	1.4	1.8	2	3	4	WF2EF	0.6		
ALT (3° APCH PATH)		990	1090	1170	1490	1810	2120	2300		



NOTES

- MAX IAS: INITIAL : 210KT.
- AWIS (PHONE) 03 8470 3223

CATEGORY	A	B	C	D
CIRCLING	990 (593-2.4)	1090 (693-4.0)		NOT APPLICABLE
ALTERNATE	(1093-4.4)	(1193-6.0)		

Changes: REVISED PROC, CHANGE OF OWNERSHIP.

WKGBN02-176