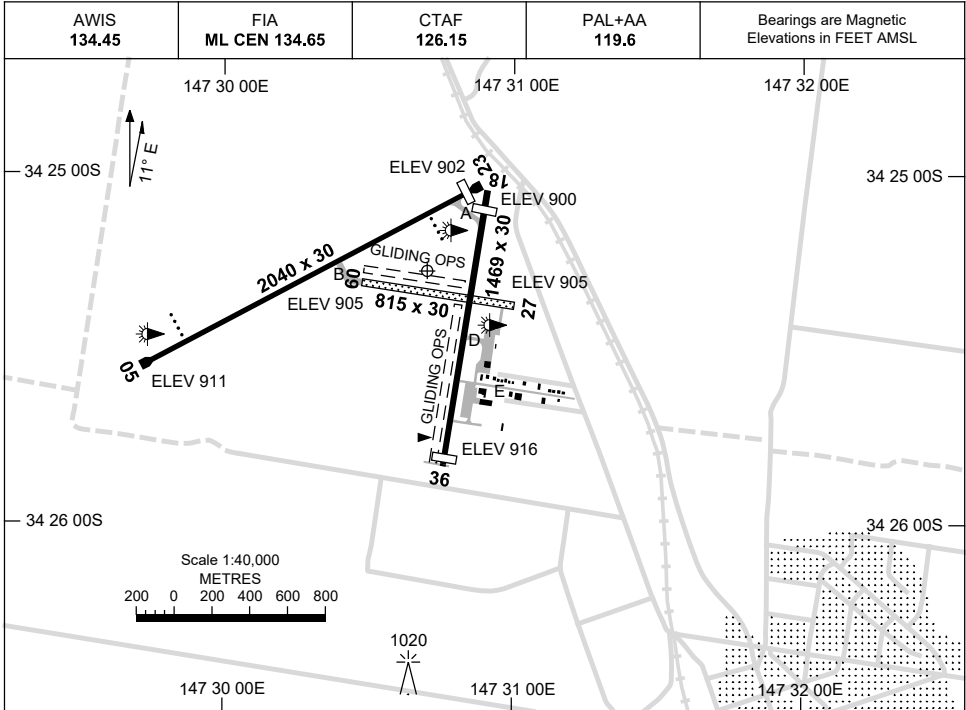


7 SEP 2023

AD ELEV 921
34 25 17S 147 30 42E

AERODROME CHART
TEMORA, NSW (YTEM)



RWY	AERODROME LIGHTING	
		TAXIWAY : BLUE EDGE
05 <small>050</small>	PAPI 3.0° 41.3FT	LIRL
<small>230</small> 23	PAPI 3.0° 41.3FT	LIRL
18 <small>177</small>	NIL	
<small>357</small> 36	NIL	
09 <small>087</small>	NIL	
<small>267</small> 27	NIL	

NOTES

- ML CEN FIA 134.65 AVBL IN CIRCUIT AREA.
- AWIS RQ 1 SEC PULSE TO ACT.

Changes: NOTES.

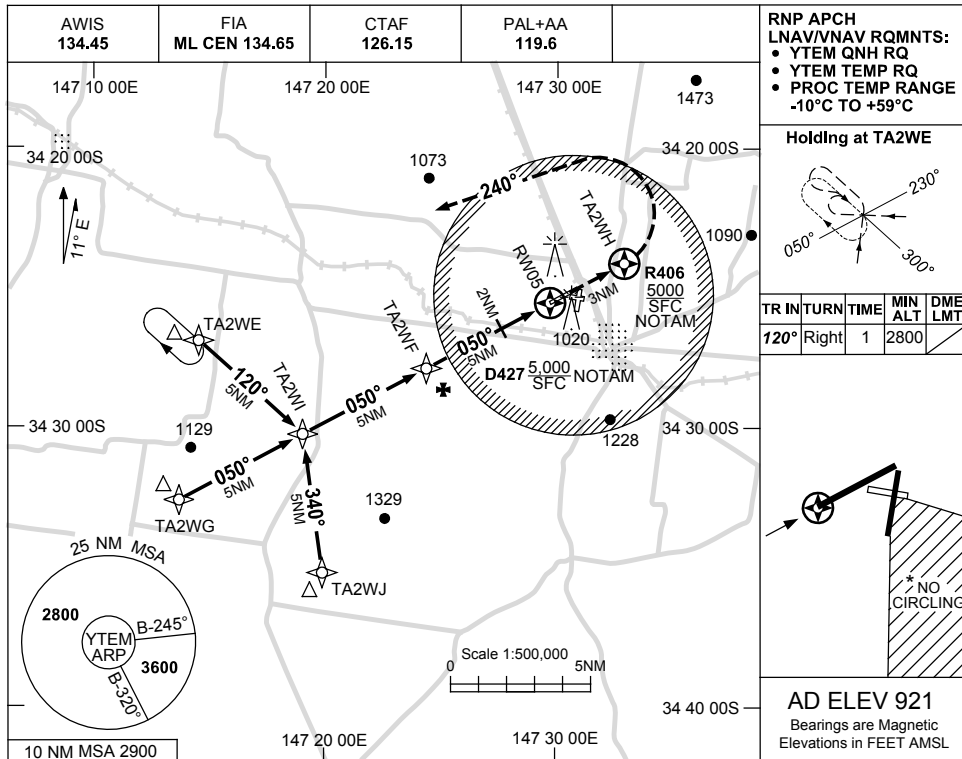
TEMAD01-176

USE QNH

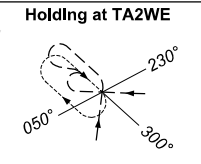
RNP RWY 05

TEMORA, NSW (YTEM)

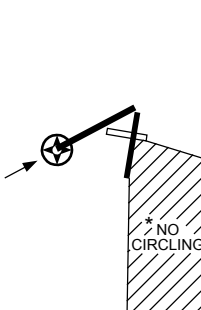
15 JUN 2023



RNP APCH
LNAV/VNAV RQMTS:
• YTEM QNH RQ
• YTEM TEMP RQ
• PROC TEMP RANGE
-10°C TO +59°C

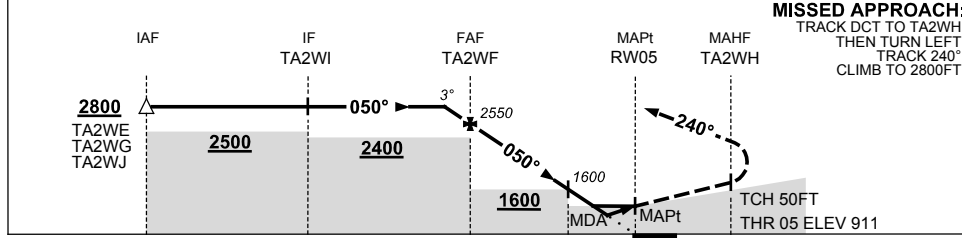


TR	IN	TURN	TIME	MIN ALT	DME LMT
120°	Right	1	2800		



AD ELEV 921
Bearings are Magnetic
Elevations in FEET AMSL

NM TO NEXT WPT	0.8	TA2WF	4	3	2	1.6	1.0	RW05
ALT (3° APCH PATH)	2800	2550	2230	1920	1600	1470	1280	



MISSED APPROACH:
TRACK DCT TO TA2WH,
THEN TURN LEFT,
TRACK 240°,
CLIMB TO 2800FT.

NM TO RW05: 15, 10, 5, 2, 0, 3

NOTES

CATEGORY	A	B	C	D
LNAV/VNAV	1280 (369-2.1)			
LNAV	1470 (559-3.2)			
CIRCLING *	1710 (789-2.4)	1810 (889-4.0)	1810 (889-5.0)	
ALTERNATE	(1289-4.4)	(1389-6.0)	(1389-7.0)	

- MAX IAS:
INITIAL : 210KT.
- * NO CIRCLING IN
SECTOR SOUTH EAST
OF RWYS 27 & 36.

Changes: SEGMENT MINIMA, CHART TITLE & WPT NAMING CONVENTION, MISSED APCH TRACK. TEMGN02-175

