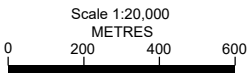
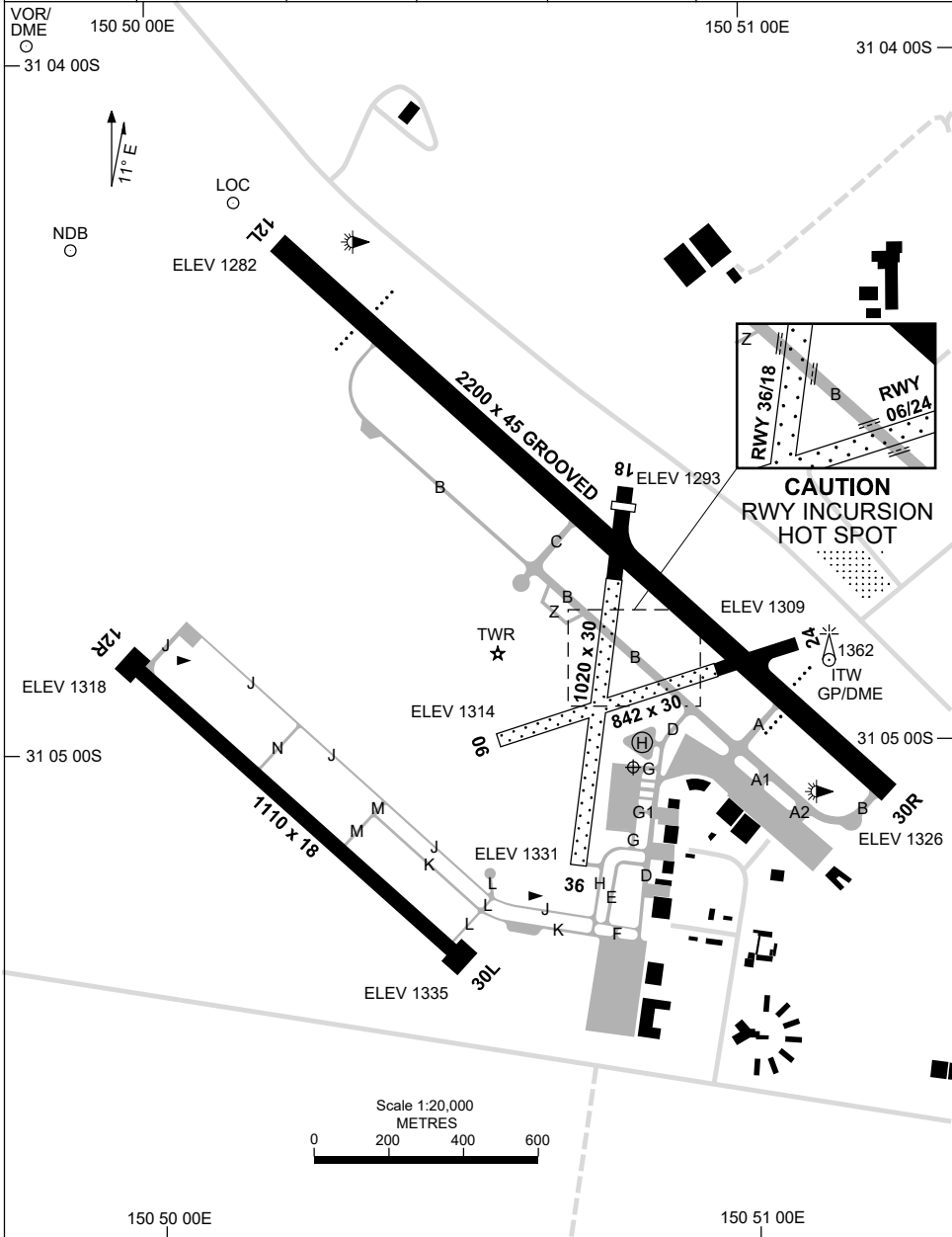


7 SEP 2023

AD ELEV 1335
31 05 02S 150 50 48E

AERODROME CHART - Page 1
TAMWORTH, NSW (YSTW)

ATIS 116.0 123.8	TWR 119.4 118.25 (HJ)	SMC 121.9	FIA (AH) BN CEN 127.1	CTAF+AFRU (AH) AFRU+PAL (AH) 119.4	Bearings are Magnetic Elevations in FEET AMSL
---------------------	--------------------------	--------------	--------------------------	--	--



Changes: NEW APRON.

STWAD01-176

1 DEC 2022

ATIS 116.0 123.8	TWR 119.4 118.25 (HJ)	SMC 121.9	FIA (AH) BN CEN 127.1	CTAF+AFRU (AH) AFRU+PAL (AH) 119.4	Bearings are Magnetic Elevations in FEET AMSL
AERODROME LIGHTING					
RWY	TAXIWAY : GREEN CENTRELINE RL : AFRU+PAL 119.4 (AH) , SDBY (1 SEC DURING LVP , OR 8 SEC)				
12L ¹²¹ 301 30R	PAPI BOTH SIDES 3.0° 49FT MIRL PAPI BOTH SIDES 3.0° 49FT MIRL				
12R ¹²¹ 301 30L	NIL NIL				
06 ⁰⁶² 242 24	NIL NIL				
18 ¹⁷⁷ 357 36	NIL NIL				
NOTES					
1. BN CEN FIA 127.1 AVBL IN CIRCUIT AREA,					

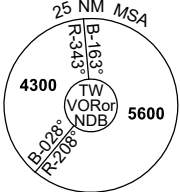
Changes: ABN DCMSD, NOTES.

STWAD02-173

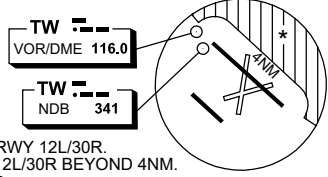
DME or GNSS ARRIVAL PROCEDURES TAMWORTH, NSW (YSTW) Page 1

24 MAR 2022

ATIS 116.0 123.8	TWR 119.4 118.25 (HJ)	SMC 121.9	FIA (AH) BN CEN 127.1	CTAF+AFRU (AH) AFRU+PAL (AH) 119.4	Bearings are Magnetic Elevations in FEET AMSL
----------------------------	---------------------------------	---------------------	---------------------------------	---	--



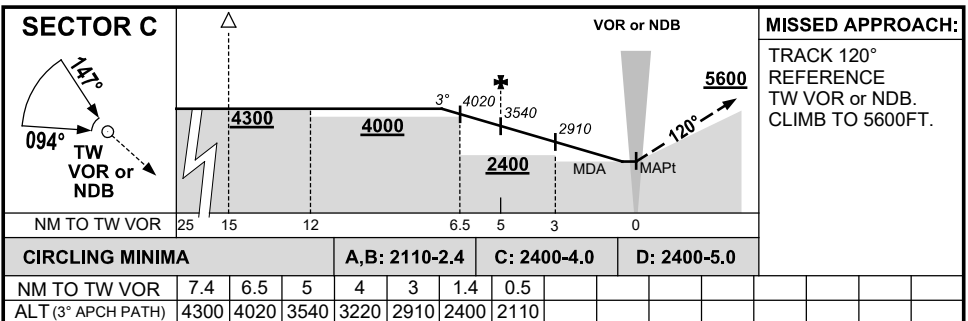
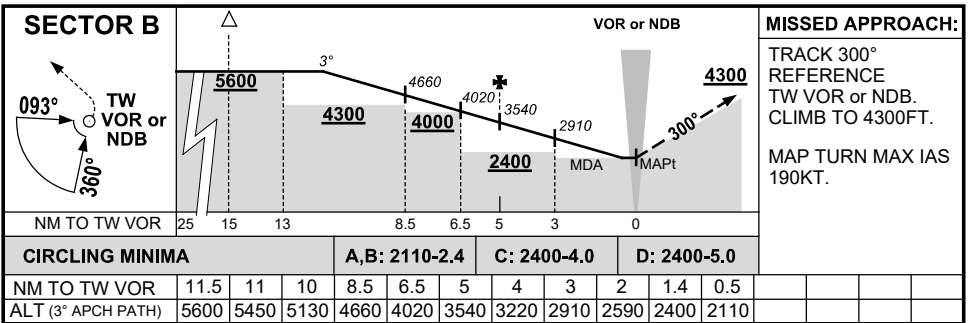
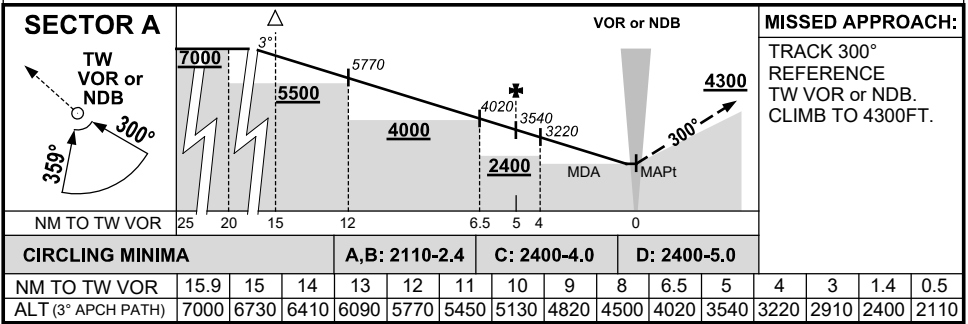
DME USING TW DME REFERENCE WAYPOINT TW VOR



* MAX IAS CIRCLING 170KT WHEN NE OF RWY 12L/30R.
 CAT A, B & C NO CIRCLING NE OF RWY 12L/30R BEYOND 4NM.
 CAT D NO CIRCLING NE OF RWY 12L/30R.

10 NM MSA 5000

AD ELEV 1335



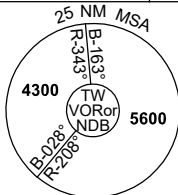
Changes: AD ELEV, Editorial.

STWDG01-170

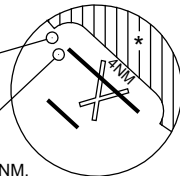
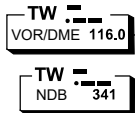
DME or GNSS ARRIVAL PROCEDURES TAMWORTH, NSW (YSTW) Page 2

24 MAR 2022

ATIS 116.0 123.8	TWR 119.4 118.25 (HJ)	SMC 121.9	FIA (AH) BN CEN 127.1	CTAF+AFRU (AH) AFRU+PAL (AH) 119.4	Bearings are Magnetic Elevations in FEET AMSL
---------------------	--------------------------	--------------	--------------------------	--	--



DME USING TW DME REFERENCE WAYPOINT TW VOR



* MAX IAS CIRCLING 170KT WHEN NE OF RWY 12L/30R.
CAT A, B & C NO CIRCLING NE OF RWY 12L/30R BEYOND 4NM.
CAT D NO CIRCLING NE OF RWY 12L/30R.

10 NM MSA 5000

AD ELEV 1335

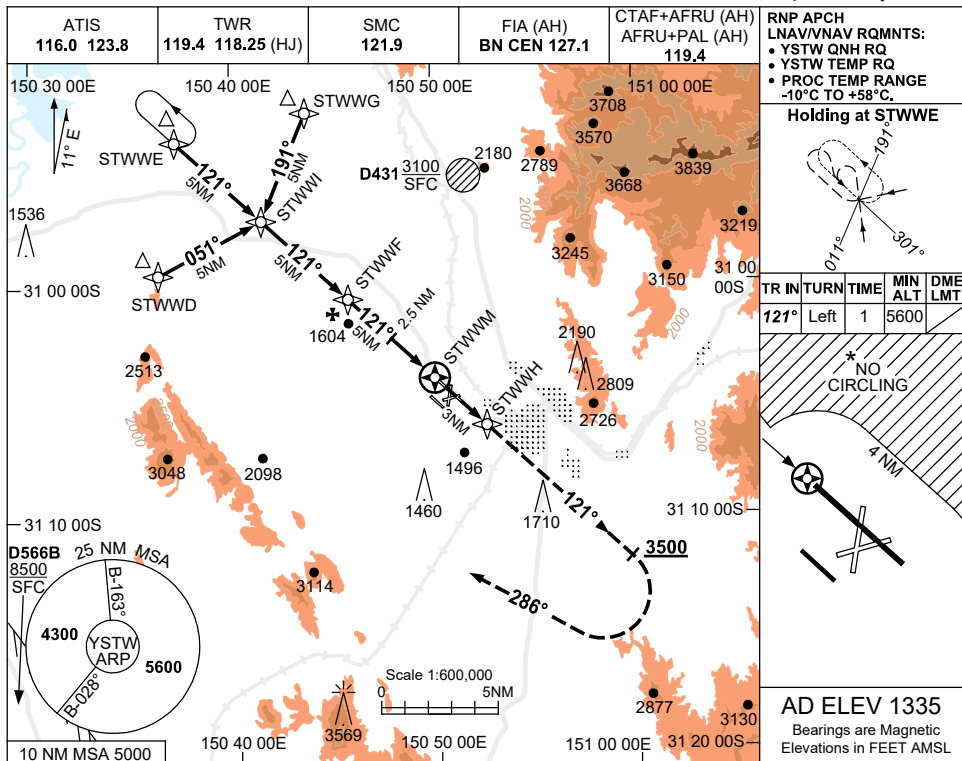
SECTOR D		VOR or NDB										MISSED APPROACH:				
												CLIMB ON TRACK TO 5600FT.				
		NM TO TW VOR		25	15	12	10	9	7	5	3	0				
CIRCLING MINIMA		A,B: 2550-2.4					C: 2550-4.0			D: 2550-5.0						
NM TO TW VOR		9.9	9	8	7	6	5	4	3	2	1	0.3				
ALT (3° APCH PATH)		5600	5320	5000	4680	4360	4050	3730	3410	3090	2770	2550				

ARM TO TW		VOR or NDB										MISSED APPROACH:				
												TRACK 220°. CLIMB TO 5600FT.				
		NM TO TW VOR		25	15	12	10	9	7	5	3	0				
CIRCLING MINIMA		A,B: 2310-2.4					C: N/A			D: N/A						
NM TO TW VOR		9.2	9	8	7	6	5	4	3	2	1	0.3				
ALT (3.5° APCH PATH)		5600	5540	5170	4800	4430	4060	3680	3310	2940	2570	2310				

USE QNH

RNP RWY 12L
TAMWORTH, NSW (YSTW)

21 MAR 2024



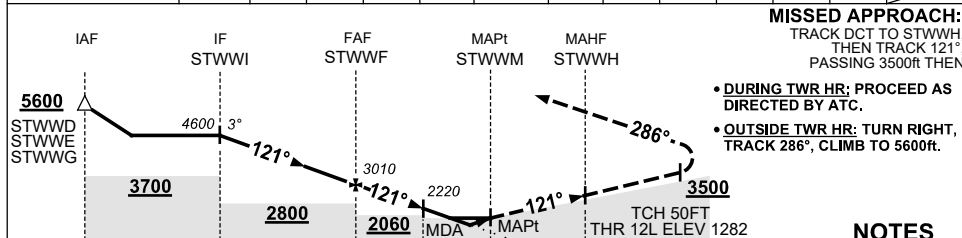
RNP APCH
LNAV/VNAV RQMNTS:
• YSTW QNH RQ
• YSTW TEMP RQ
• PROC TEMP RANGE -10°C TO +58°C.

Holding at STWWI

TR IN	TURN TIME	MIN ALT	DME LMT
121°	Left	1	5600

AD ELEV 1335
Bearings are Magnetic
Elevations in FEET AMSL

NM TO NEXT WPT	STWWI	4	3	2	1	STWWF	4	3	2.5	2	1.4	0.8	STWWW
ALT (3° APCH PATH)	4600	4280	3970	3650	3330	3010	2690	2370	2220	2050	1880	1660	



- NOTES**
1. MAX IAS: INITIAL : 220KT.
 2. CAT A,B&C NO CIRCLING NE OF RWY 12L/30R BEYOND 4NM. MAX IAS 170KT.
 3. CAT D NO CIRCLING NE OF RWY 12L/30R.
 4. HLDG NOT CONTAINED IN CTA.
 5. COLOUR: SEE SPEC NOTICES.

CATEGORY	A	B	C	D
LNAV/VNAV		1660 (378-2.1)		
LNAV		1880 (598-3.4)		
CIRCLING *	2110 (775-2.4)		2400 (1065-4.0)	2400#(1065-5.0)
ALTERNATE	(1275-4.4)		(1565-6.0)	(1565-7.0)

Changes: D566B ADDED, Editorial.

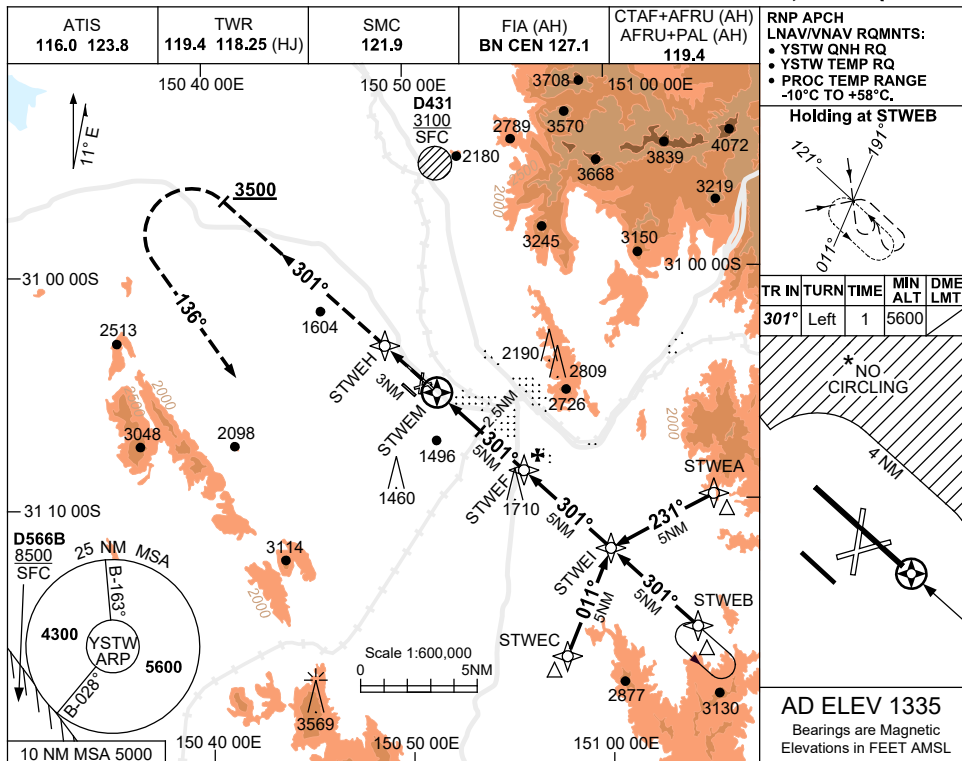
STWGN01-178

USE QNH

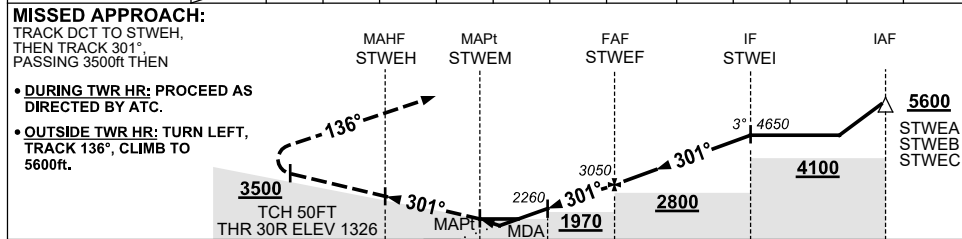
RNP RWY 30R

21 MAR 2024

TAMWORTH, NSW (YSTW)



NM TO NEXT WPT	STWEM	0.8	1.3	2	2.5	3	4	STWEE	1	2	3	4	STWEI
ALT (3° APCH PATH)		1700	1870	2100	2260	2420	2740	3050	3370	3690	4010	4330	4650



NM TO STWEM		3	0.3	1	2.5	5	10	15
-------------	--	---	-----	---	-----	---	----	----

NOTES

- MAX IAS: INITIAL : 220KT.
- CAT A,B&C NO CIRCLING NE OF RWY 12L/30R BEYOND 4NM. MAX IAS 170KT.
- CAT D NO CIRCLING NE OF RWY 12L/30R.
- HLDG NOT CONTAINED IN CTA.
- COLOUR: SEE SPEC NOTICES.

CATEGORY	A	B	C	D
LNAV/VNAV		1700 (374-2.1)		
LNAV		1870 (544-3.1)		
CIRCLING *	2110 (775-2.4)	2400 (1065-4.0)	2400#(1065-5.0)	
ALTERNATE	(1275-4.4)	(1565-6.0)	(1565-7.0)	

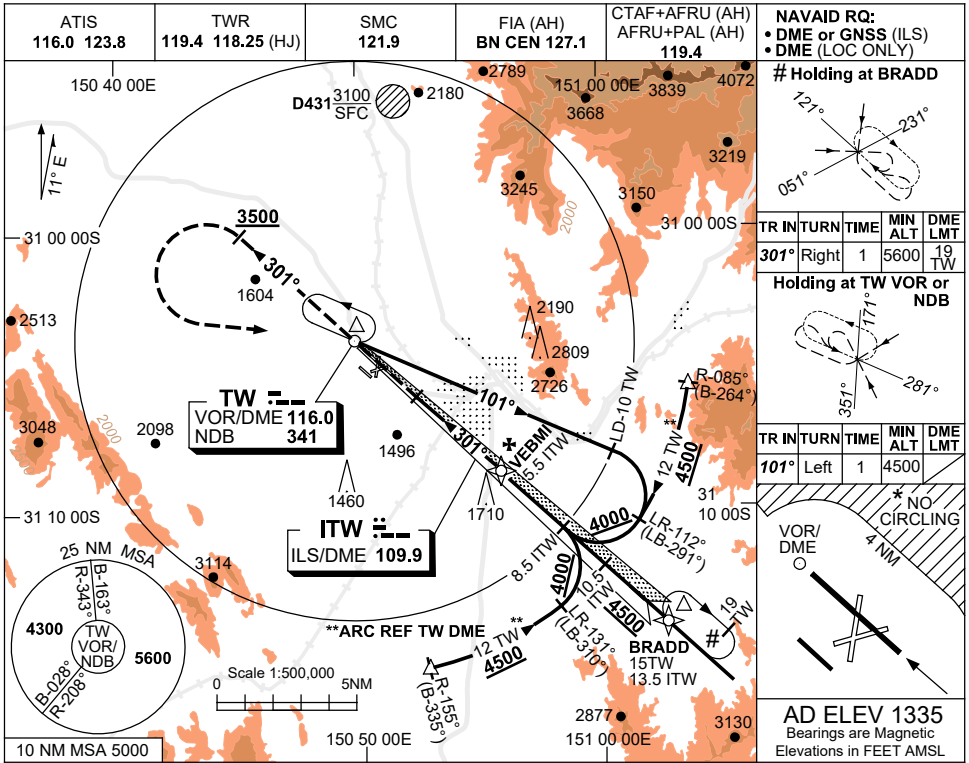
Changes: D566B ADDED, Editorial.

STWGN02-178

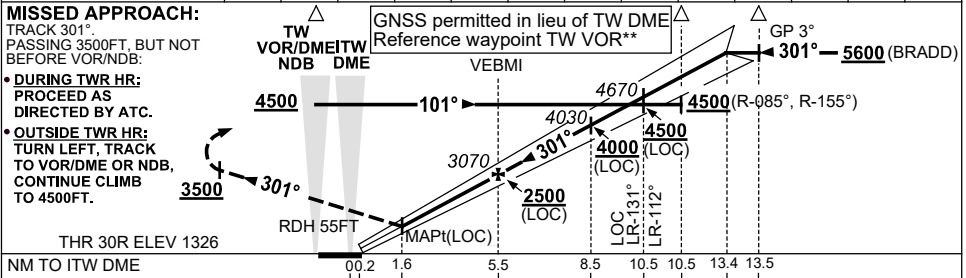
USE QNH

ILS-Z or LOC-Z RWY 30R
TAMWORTH, NSW (YSTW)

16 JUN 2022



DIST TO ITW DME	2.1	3	4	5	5.5	7	8	8.5	10	10.5	12	13	13.4
ALT (3° APCH PATH)	1990	2280	2600	2910	3070	3550	3870	4030	4500	4670	5140	5460	5600



NM TO ITW DME	00.2	1.6	5.5	8.5	10.5	10.5	13.4	13.5
NM TO RWY 30R	0	1.5	5.4	8.4	10.4	13.3	13.4	

CATEGORY	A	B	C	D
S-I ILS		1740 (414)	2.4 (VIS 1.8 WITH ACTUAL QNH)	
S-I LOC/DME		1990 (664-3.8)		
CIRCLING*	2110 (775-2.4)	2400 (1065-4.0)	2400#(1065-5.0)	
ALTERNATE	(1275-4.4)	(1565-6.0)	(1565-7.0)	

- NOTES**
- MAX IAS: HOLDING AT BRADD: 210KTS.
 - CAT A,B&C NO CIRCLING NE OF RWY 12L/30R BEYOND 4NM. MAX IAS 170KTS.
 - CAT D NO CIRCLING NE OF RWY 12L/30R.
 - COLOUR: SEE SPEC NOTICES.

Changes: UNLIT 1710FT OBST.

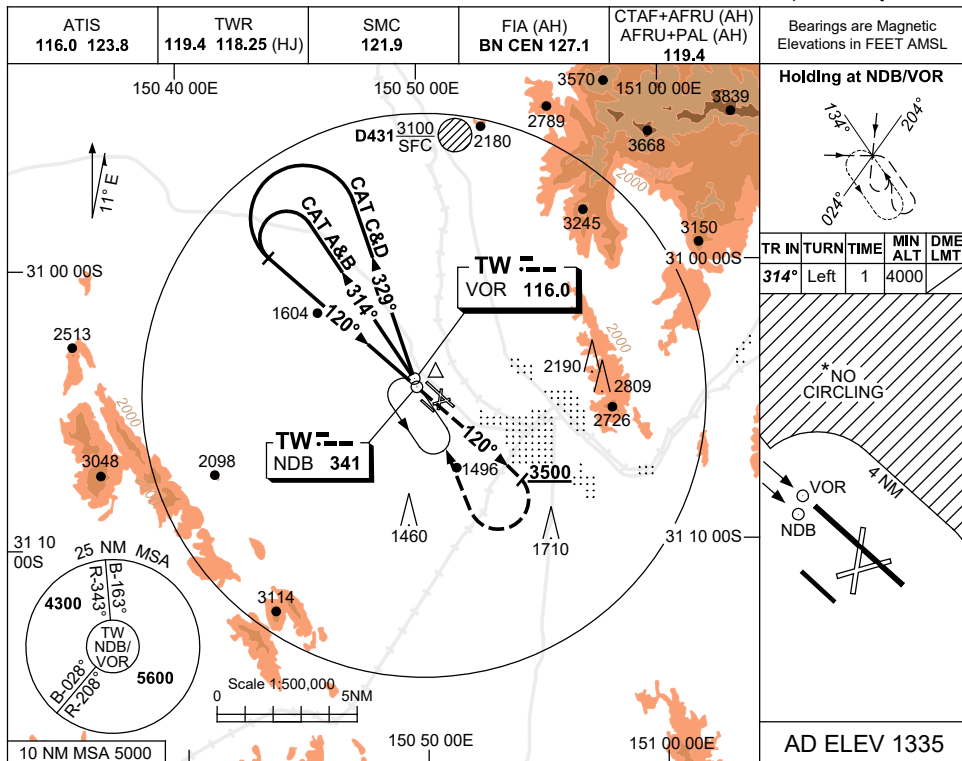
STWII01-171

USE QNH

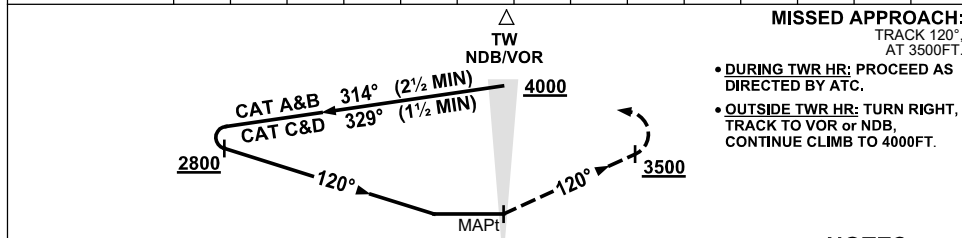
NDB-A or VOR-A

16 JUN 2022

TAMWORTH, NSW (YSTW)



DME DIST	NOT APPLICABLE				
ALT					



NOTES

1. MAX IAS:
HOLDING: 210KT.
INITIAL:
CAT C&D 185KT.
- *2. CAT A,B&C NO CIRCLING NE OF RWY 12L/30R BEYOND 4NM. MAX IAS 170KT.
3. CAT D NO CIRCLING NE OF RWY 12L/30R.
4. COLOUR: SEE SPEC NOTICES.

CATEGORY	A	B	C	D
CIRCLING *	2170 (835-2.4)	2400 (1065-4.0)	2400#(1065-5.0)	
ALTERNATE	(1335-4.4)	(1565-6.0)	(1565-7.0)	

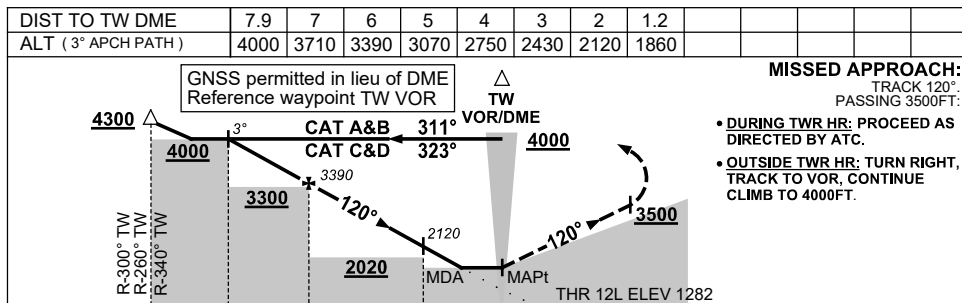
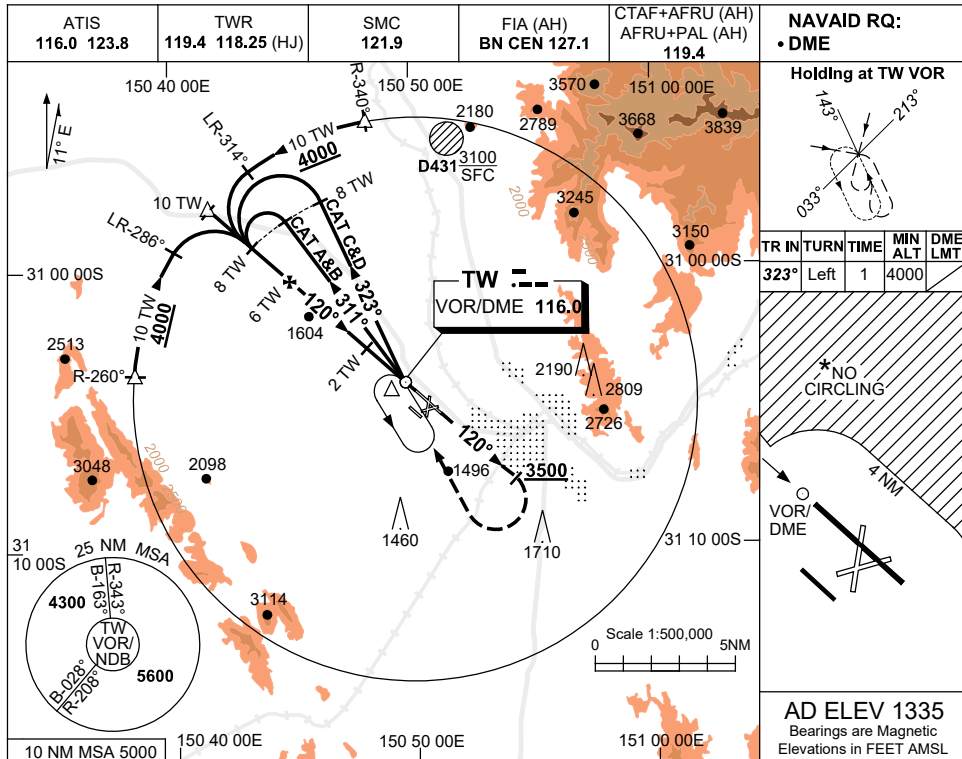
Changes: UNLIT 1710FT OBST.

STWNB01-171

USE QNH

VOR RWY 12L
TAMWORTH, NSW (YSTW)

16 JUN 2022



CATEGORY	A	B	C	D
S-I VOR/DME	1860 (578-3.3)			
CIRCLING *	2110 (775-2.4)	2400 (1065-4.0)	2400# (1065-5.0)	
ALTERNATE	(1275-4.4)	(1565-6.0)	(1565-7.0)	

NOTES

1. MAX IAS:
INITIAL : 210KT.
2. CAT A,B&C NO CIRCLING NE OF RWY 12L/30R BEYOND 4NM. MAX IAS 170KT.
3. CAT D NO CIRCLING NE OF RWY 12L/30R.
4. COLOUR: SEE SPEC NOTICES.

Changes: UNLIT 1710FT OBST.

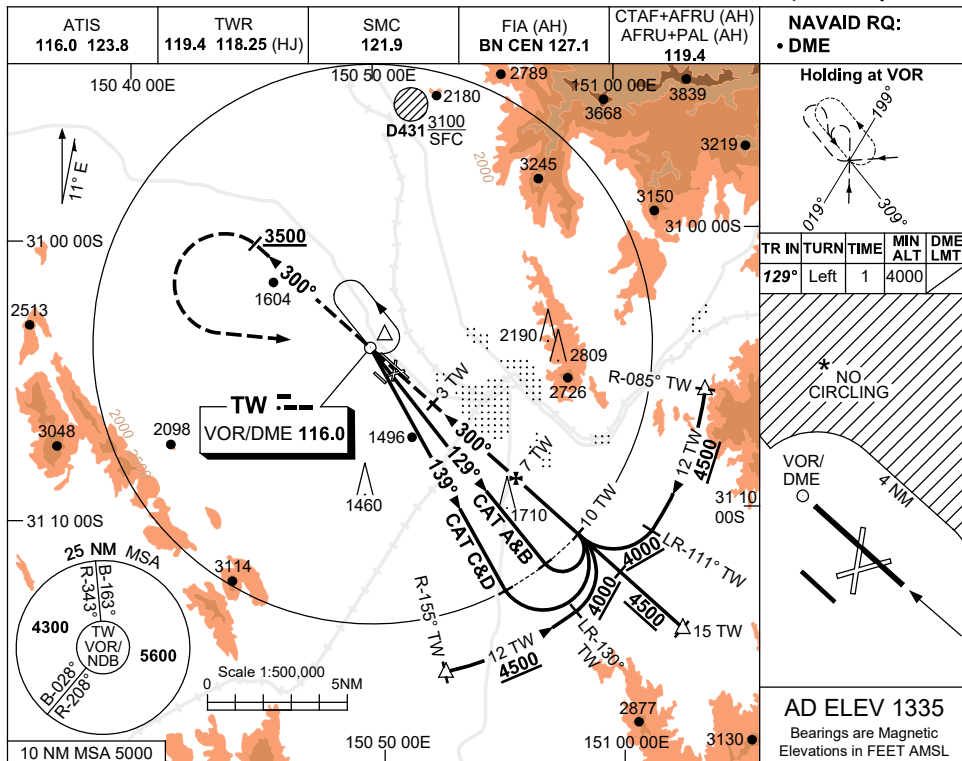
STWV001-171

USE QNH

VOR RWY 30R

16 JUN 2022

TAMWORTH, NSW (YSTW)



NAVAID RQ:
• DME

Holding at VOR

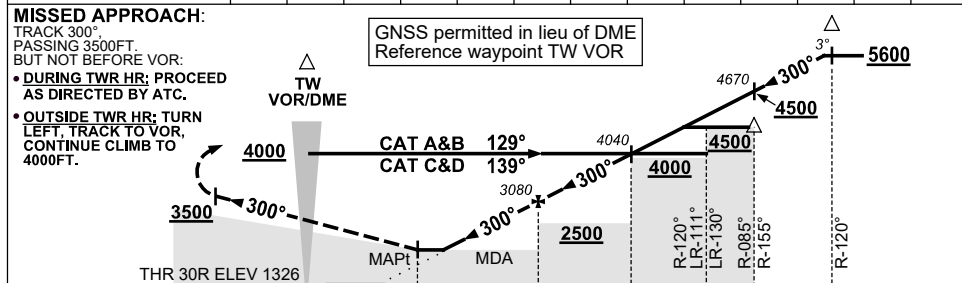
TR IN	TURN	TIME	MIN ALT	DME LMT
129°	Left	1	4000	

NO CIRCLING

VOR/DME
4 NM

AD ELEV 1335
Bearings are Magnetic
Elevations in FEET AMSL

DIST BY TW DME	3.6	4	5	6	7	8	9	10	11.5	12	13	14	14.9
ALT (3° APCH PATH)	1990	2130	2440	2760	3080	3400	3720	4040	4500	4670	4990	5310	5600



- NOTES**
- MAX IAS: INITIAL : 210KT. HOLDING: 210KT.
 - CAT A,B&C NO CIRCLING NE OF RWY 12L/30R BEYOND 4NM. MAX IAS 170KT.
 - CAT D NO CIRCLING NE OF RWY 12L/30R.
 - COLOUR: SEE SPEC NOTICES.

CATEGORY	A	B	C	D
S-I VOR/DME	1990 (664-3.8)			
CIRCLING *	2110 (775-2.4)	2400 (1065-4.0)	2400 # (1065-5.0)	
ALTERNATE	(1275-4.4)	(1565-6.0)	(1565-7.0)	

Changes: UNLIT 1710FT OBST.

STWV002-171