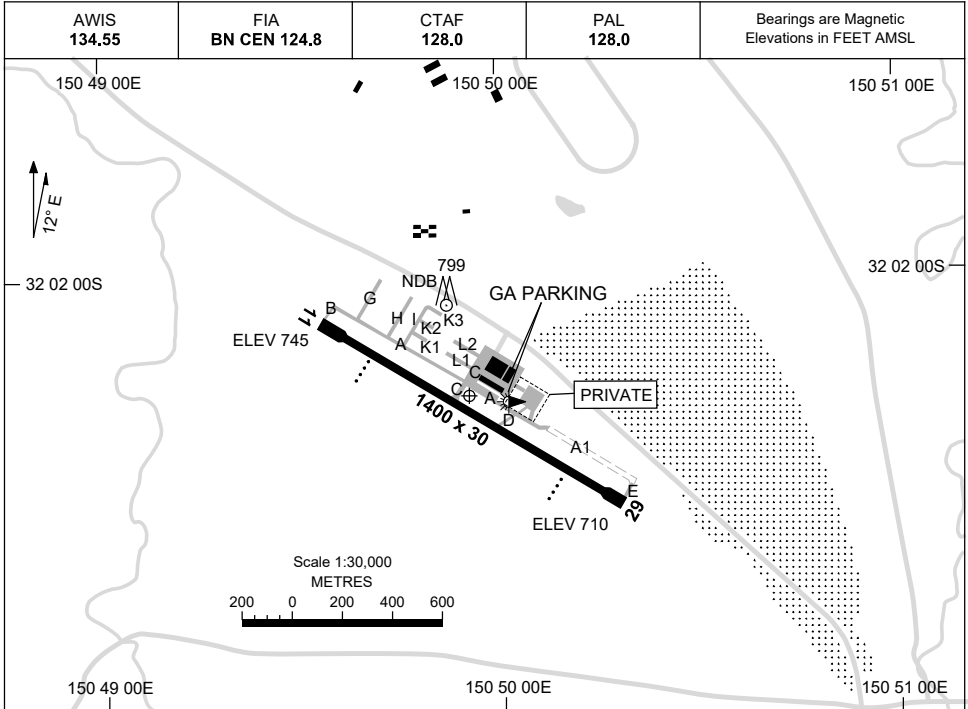


15 JUN 2023

AD ELEV 745  
32 02 14S 150 49 56E

AERODROME CHART  
**SCONE, NSW (YSCO)**



	<b>AERODROME LIGHTING</b>
<b>RWY</b>	TAXIWAY : BLUE EDGE ON TWY C RL : PAL 128.0
<b>11</b> <small>110</small>	LIRL PAPI RIGHT SIDE 3.0° 45FT
<small>290</small> <b>29</b>	LIRL PAPI LEFT SIDE 3.0° 46FT

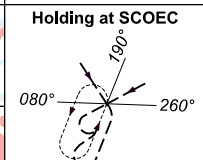
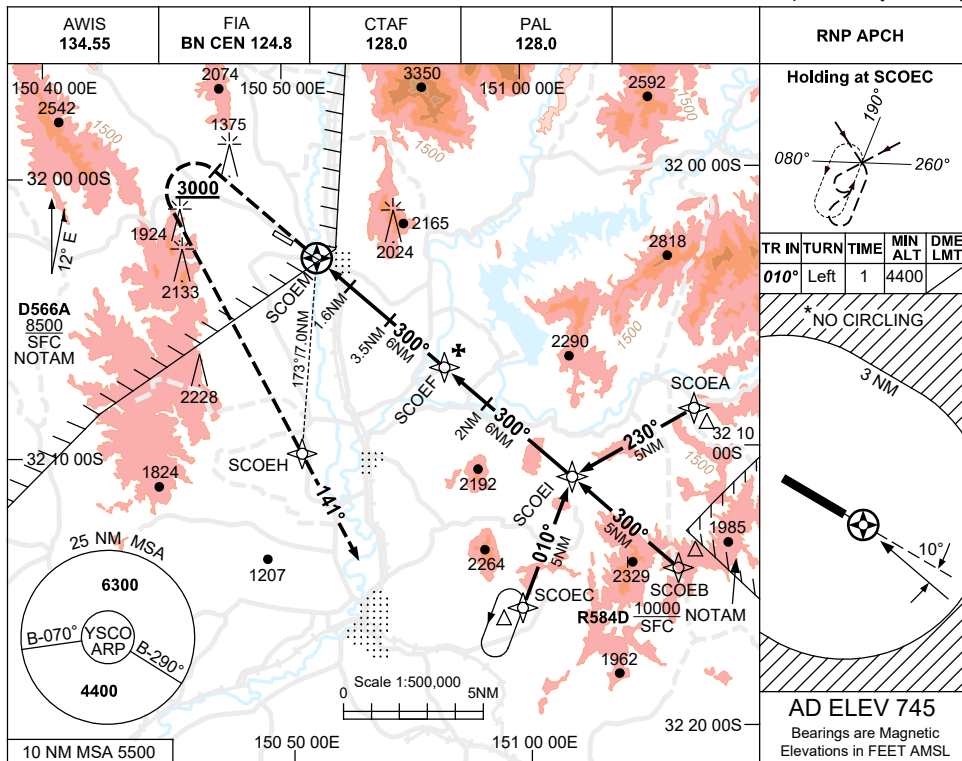
**NOTES**

1. **CAUTION:** THE PILOT IN COMMAND SHOULD BE AWARE OF THE TERRAIN AND OBSTACLES IN THE CIRCLING AREA PRIOR TO CONDUCTING NIGHT IFR OPERATIONS INTO SCONE.
2. AWIS RQ 1 SEC TRANSMIT PULSES TO ACTIVATE.
3. FIA FREQ 124.8 AVBL 4000FT.
4. PAL RQ THREE ONE SECOND PULSES TO ACTIVATE.

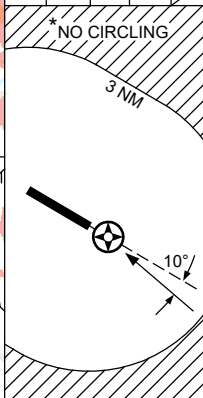
USE QNH

RNP RWY 29  
**SCONE, NSW (YSCO)**

30 NOV 2023

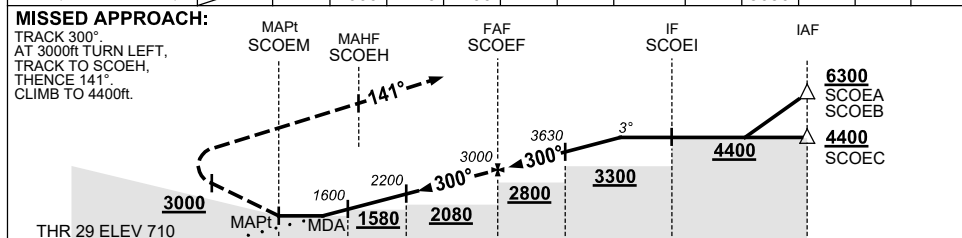


TR	IN	TURN	TIME	MIN	DME
				ALT	LMT
010°	Left	1	4400		



**AD ELEV 745**  
 Bearings are Magnetic  
 Elevations in FEET AMSL

NM TO NEXT WPT	SCOEM	1.5	1.6	2	3.5	4	5	SCOEF	1	2	3	4.4
ALT (3° APCH PATH)		1580	1600	1720	2200	2360	2680	3000	3320	3630	3950	4400



CATEGORY	A		B		C		D	
	1580 (870-5.0)		2040 (1295-2.4)		2530(1785-4.0)		NOT APPLICABLE	
LNAV	1580 (870-5.0)		2040 (1295-2.4)		2530(1785-4.0)		NOT APPLICABLE	
CIRCLING *	2040 (1295-2.4)		2530(1785-4.0)		2530(1785-4.0)		NOT APPLICABLE	
ALTERNATE	(1795-4.4)		(1795-4.4)		(2285-6.0)		NOT APPLICABLE	

- NOTES**
- MAX IAS: INITIAL : 210KT. MAP TURN: 200KT.
  - NO CIRCLING BEYOND 3NM.
  - CLR MAY BE RQD. WHEN R584D ACT. (WLM APP 135.7)
  - COLOUR: SEE SPEC NOTICES.

Changes: R584D REPLACES R583B, ADDED D566A, NOTES, Editorial.

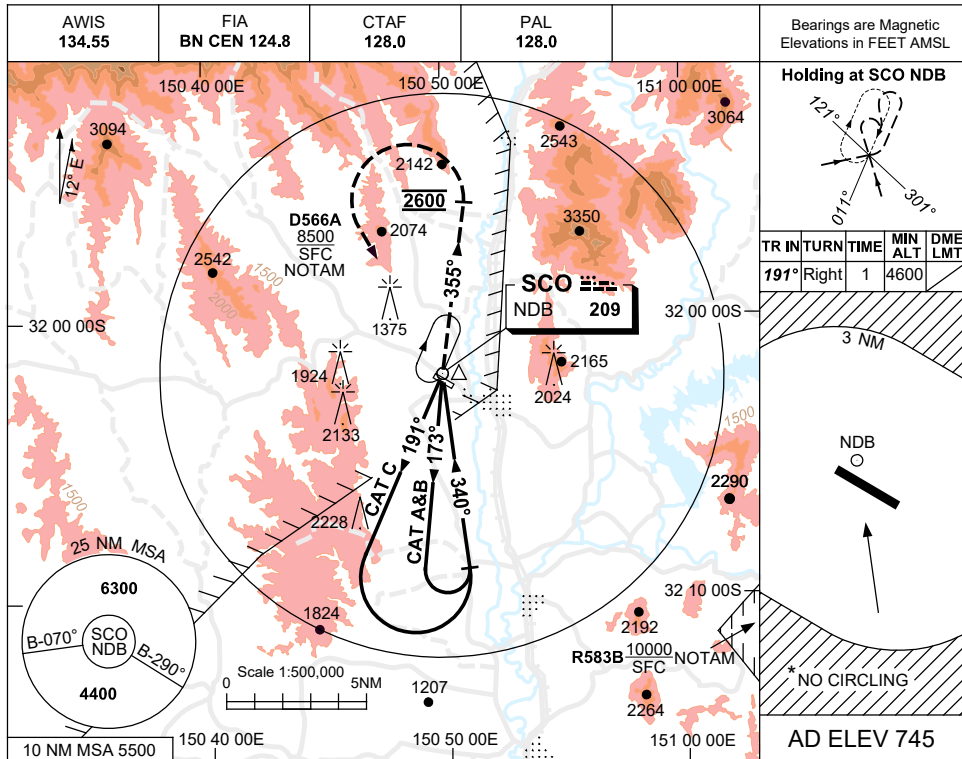
SCOGN01-177

USE QNH

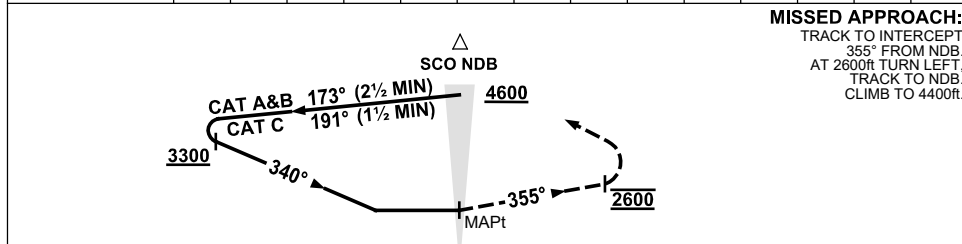
NDB-A

30 NOV 2023

SCONE, NSW (YSCO)



DME DIST		NOT APPLICABLE	
ALT			



**NOTES**

1. MAX IAS:  
 INITIAL :  
 CAT C : 200KT.  
 HOLDING : 190KT.  
 MAP TURN: 190KT.
- \* 2. NO CIRCLING  
 BEYOND 3NM.
3. COLOUR: SEE  
 SPEC NOTICES.

CATEGORY	A	B	C	D
				NOT APPLICABLE
CIRCLING *	2040 (1295-2.4)		2530(1785-4.0)	
ALTERNATE	(1795-4.4)		(2285-6.0)	

Changes: ADDED D566A. Editorial.

SCONB01-177