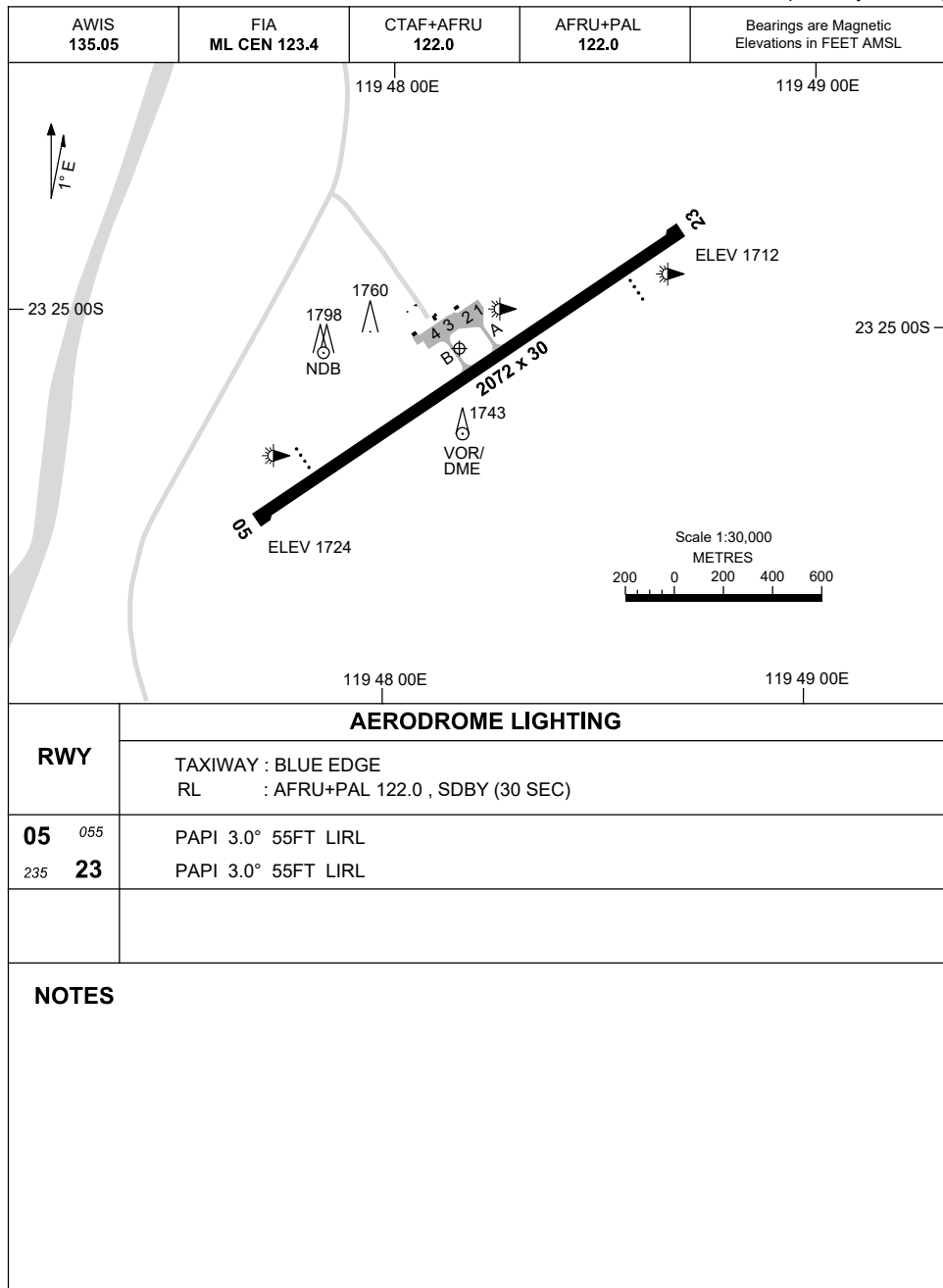


7 SEP 2023

AD ELEV 1724

23 25 04S 119 48 10E

AERODROME CHART
NEWMAN, WA (YNWN)



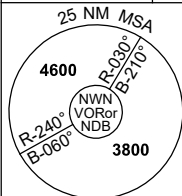
Changes: NOTES.

NWNAD01-176

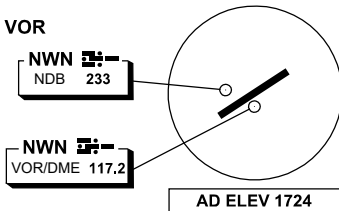
DME or GNSS ARRIVAL PROCEDURES NEWMAN, WA (YNWN) Page 1

5 NOV 2020

AWIS 135.05	FIA ML CEN 123.4	CTAF+AFRU 122.0	AFRU+PAL 122.0		Bearings are Magnetic Elevations in FEET AMSL
----------------	---------------------	--------------------	-------------------	--	--

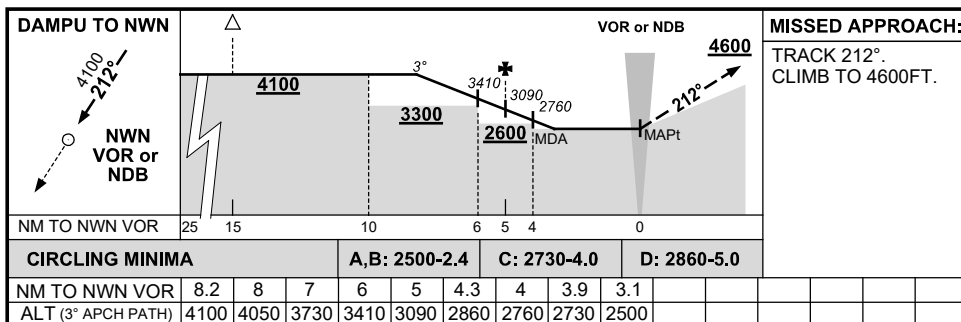
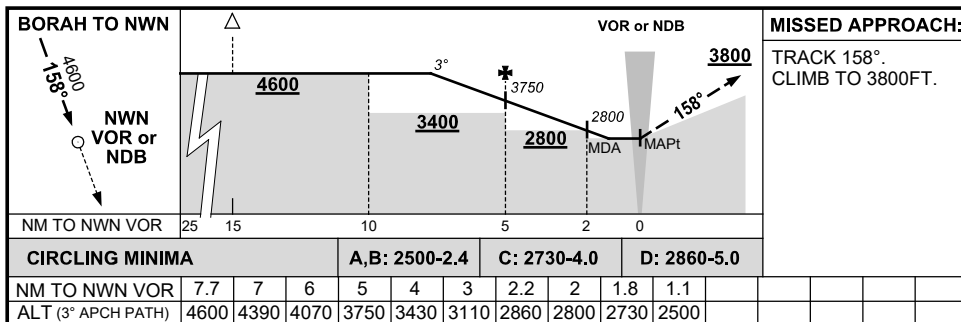
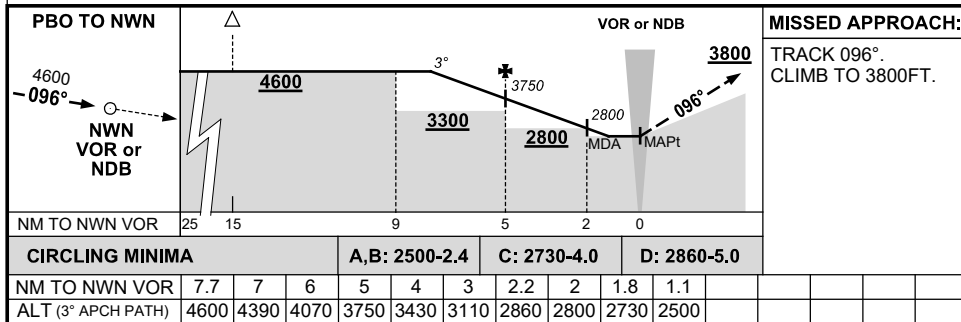


DME USING NWN DME REFERENCE WAYPOINT NWN VOR



10 NM MSA 3900

AD ELEV 1724



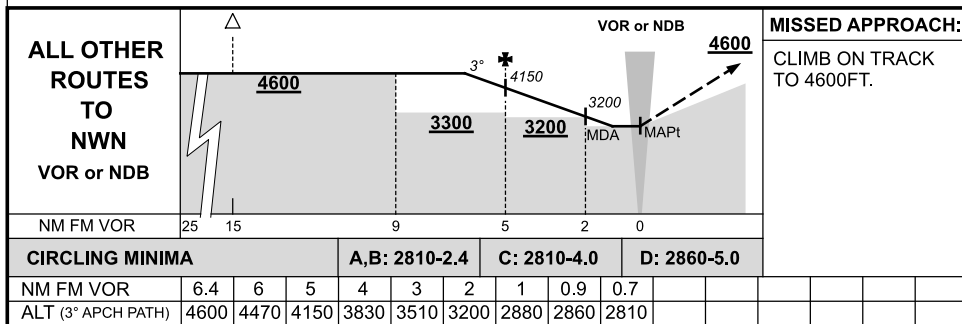
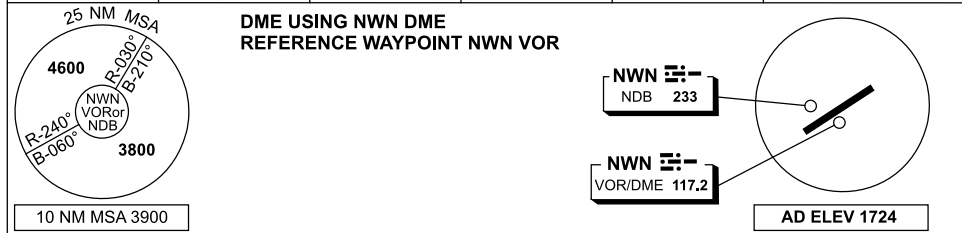
Changes: Editorial.

NWWDG01-165

DME or GNSS ARRIVAL PROCEDURES NEWMAN, WA (YNWN) Page 2

13 NOV 2014

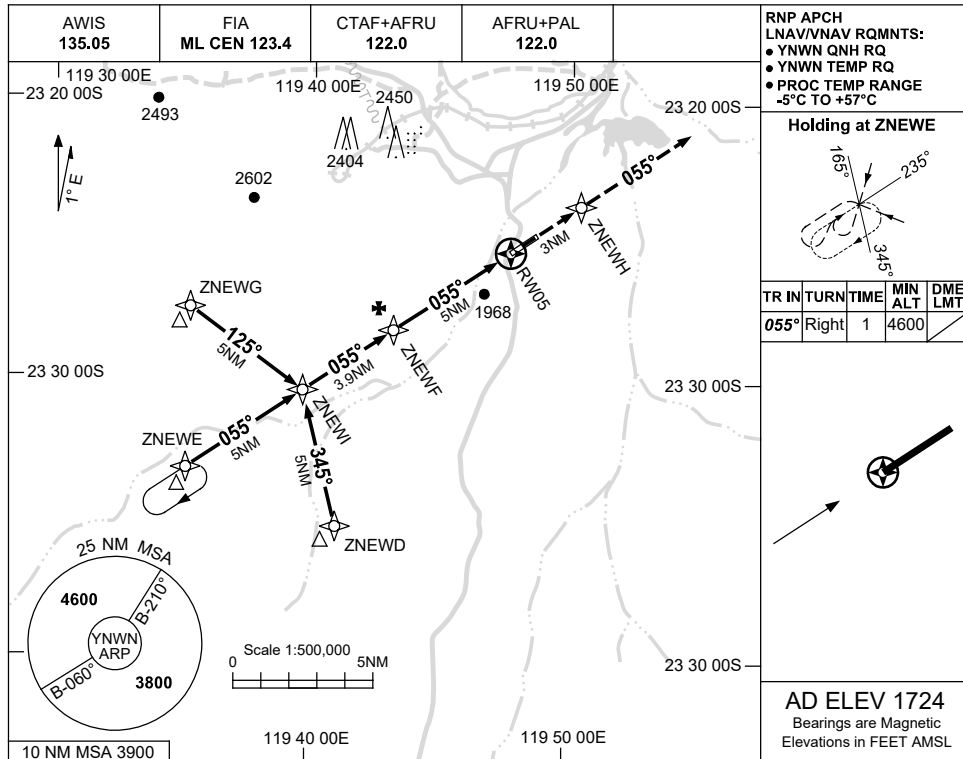
AWIS 135.05	FIA ML CEN 123.4	CTAF+AFRU 122.0	AFRU+PAL 122.0		Bearings are Magnetic Elevations in FEET AMSL
----------------	---------------------	--------------------	-------------------	--	--



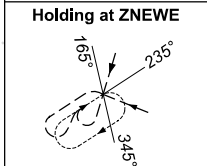
USE QNH

RNP RWY 05
NEWMAN, WA (YNWN)

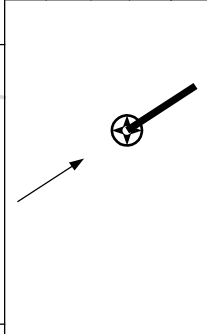
30 NOV 2023



RNP APCH
 LNAV/VNAV RQMNTS:
 • YNWN QNH RQ
 • YNWN TEMP RQ
 • PROC TEMP RANGE
 -5°C TO +57°C

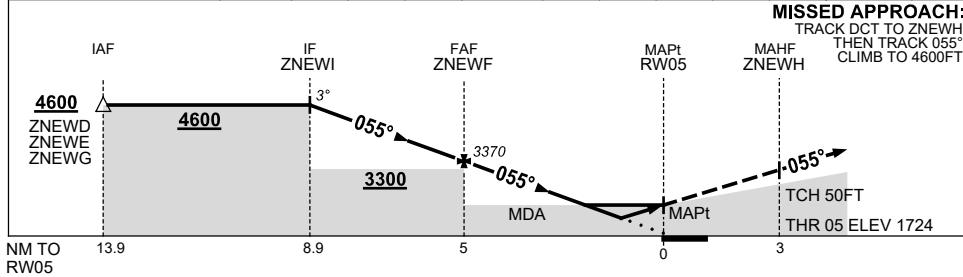


TR IN	TURN	TIME	MIN ALT	DME LMT
055°	Right	1	4600	



AD ELEV 1724
 Bearings are Magnetic
 Elevations in FEET AMSL

NM TO NEXT WPT	ZNEWI	3	2	1	ZNEWF	4	3	2	1.7	1.3	RW05
ALT (3° APCH PATH)	4600	4320	4000	3680	3370	3050	2730	2410	2330	2180	



MISSED APPROACH:
 TRACK DCT TO ZNEWH,
 THEN TRACK 055°
 CLIMB TO 4600FT.

NOTES

CATEGORY	A	B	C	D
LNAV/VNAV		2180 (456-2.6)		
LNAV		2330 (606-3.4)		
CIRCLING	2500 (776-2.4)		2730 (1006-4.0)	2860 (1136-5.0)
ALTERNATE	(1276-4.4)		(1506-6.0)	(1636-7.0)

1. MAX IAS:
 INITIAL : 230KT.

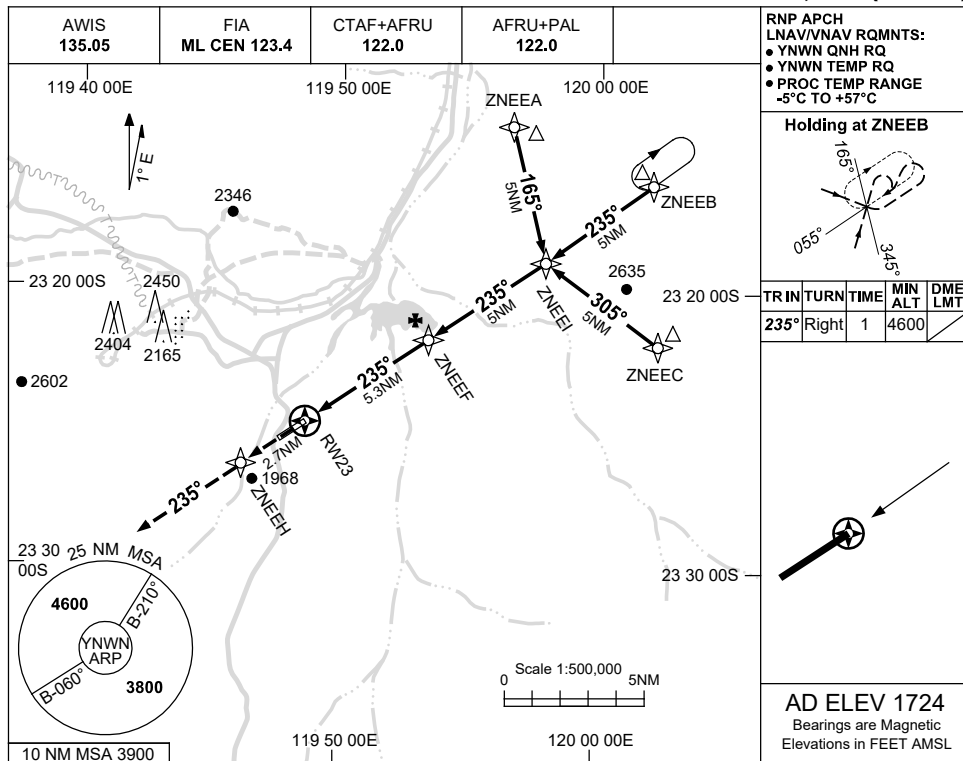
Changes: CHART TITLE, PBN SPECIFICATION BOX, Editorial.

NWNGN01-177

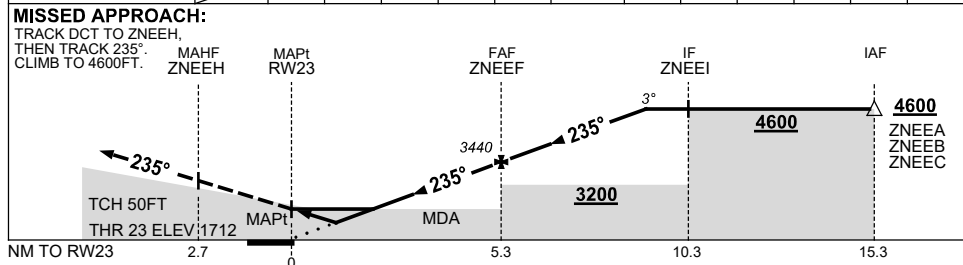
USE QNH

RNP RWY 23
NEWMAN, WA (YNWN)

30 NOV 2023



NM TO NEXT WPT	RW23	1	1.6	2	3	4	ZNEEF	1	2	3	3.6		
ALT (3° APCH PATH)		2070	2260	2400	2720	3040	3440	3760	4080	4390	4600		



CATEGORY	A	B	C	D
LNAV/VNAV		2070 (358-2.0)		
LNAV		2260 (548-3.1)		
CIRCLING	2500 (776-2.4)		2730 (1006-4.0)	2860 (1136-5.0)
ALTERNATE	(1276-4.4)		(1506-6.0)	(1636-7.0)

1. MAX IAS:
 INITIAL : 230KT.

Changes: CHART TITLE, PBN SPECIFICATION BOX, Editorial.

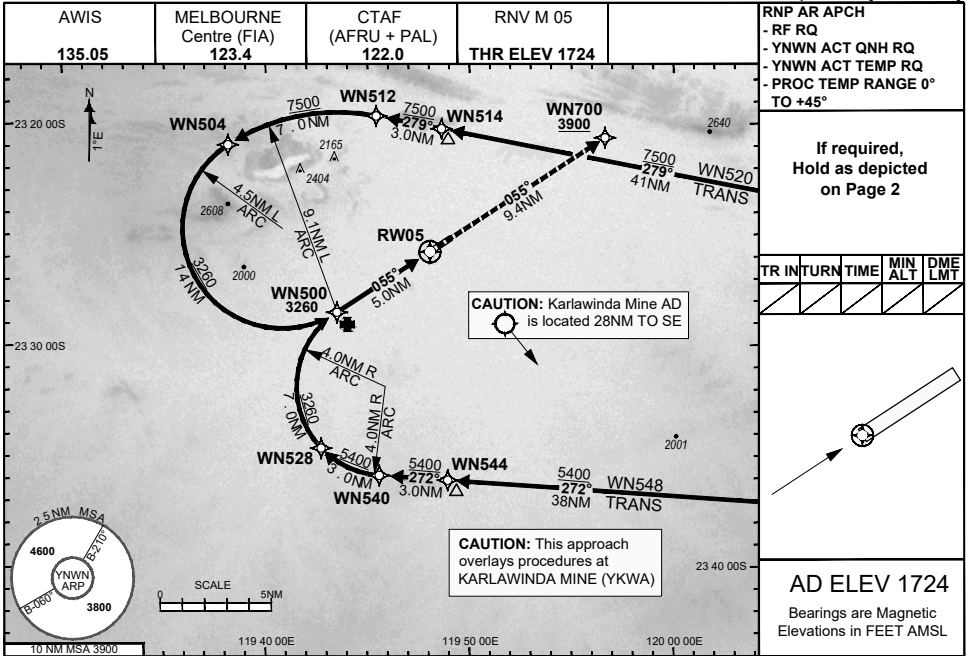
NWNGN02-177

FOR CASA APPROVED OPERATORS ONLY

30 NOV 2023

USE QNH

NEWMAN, WA (YNNW)



DISTANCE FM THR	WN504	WN528	WN500	0.9	0.8	RW05			
ALT (2.80° APCH PATH)	7500	5400	3260	2030	2024				
MISSED APPROACH: Climb to 3900FT via the RNP AR Missed Approach track to WN700. Acceleration altitude 2700FT QNH.									
ENGINE OUT MISSED APPROACH: SEE Page 2									
NM FM THR	5.0		0			9.4			

NOTES

- 1) Lateral transition to MAP must not be initiated prior to DA(H) PSN.
- 2) PAPI and glidepath not coincident.
- 3) Minimum MAP gradient (All Engines) 3.3% to 3900FT.
- 4) CAUTION: This approach overlays procedures at KARLAWINDA MINE (YKWA).

CATEGORY	A	B	C	D
RNP (0.10)	NOT APPLICABLE		DA(H) 2024' (300)-1.6	
RNP (0.30)	NOT APPLICABLE		DA(H) 2030' (306)-1.6	
CIRCLING	NOT AUTHORISED			

202308101012COPYRIGHT 2023 NAVERUS, INC. USA, GE PROPRIETARY INFORMATION
 Changes: EDITORIAL, KARLAWINDA ADD MINE, RNAV (RNP) TO RNP AR, RNP AR NOTES, REMOVED B737 NOTE NWNGN03-177

DO NOT USE FOR NAVIGATION

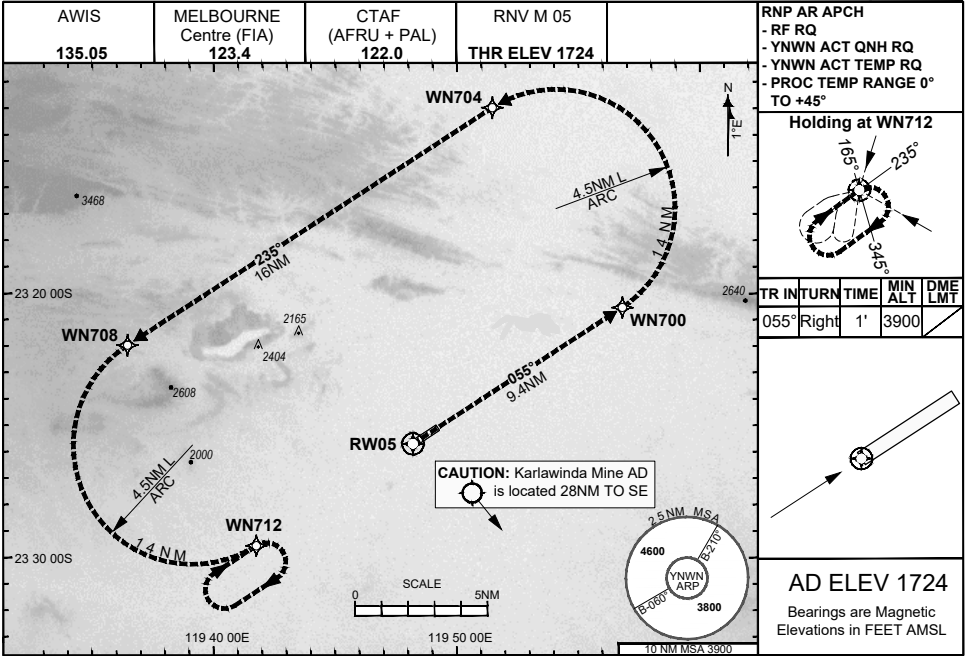
Prepared by GE Aviation



30 NOV 2023

USE QNH

NEWMAN, WA (YNWN)



ENGINE OUT MISSED APPROACH:

Track via the RNP AR Engine Out Missed Approach track to WN712 and hold as published.

Acceleration altitude 2700FT QNH (1000FT AGL).
Climb to 3900FT.

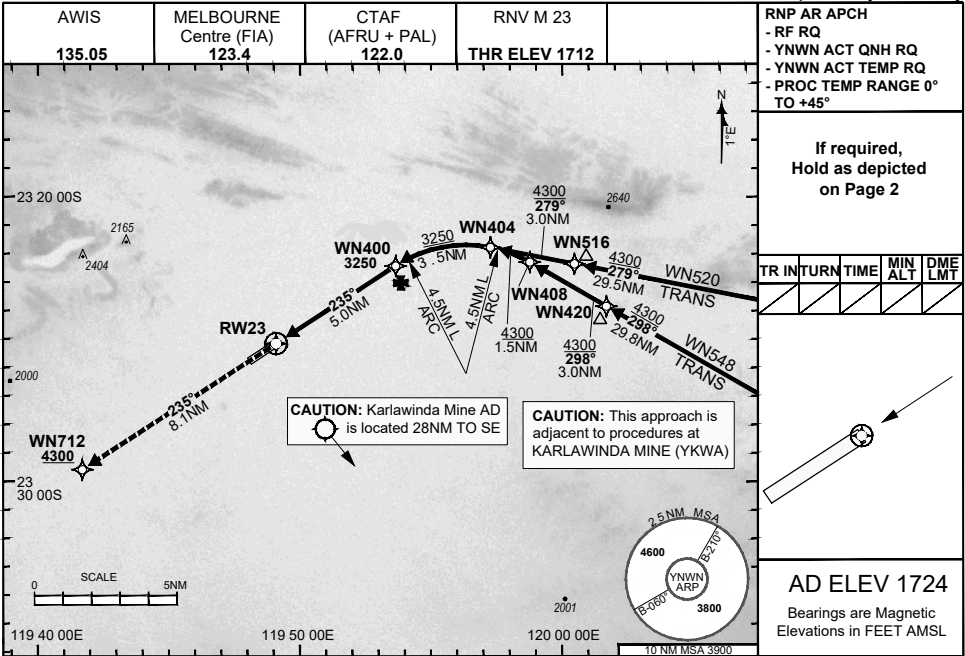


FOR CASA APPROVED OPERATORS ONLY

30 NOV 2023

USE QNH

NEWMAN, WA (YNWN)



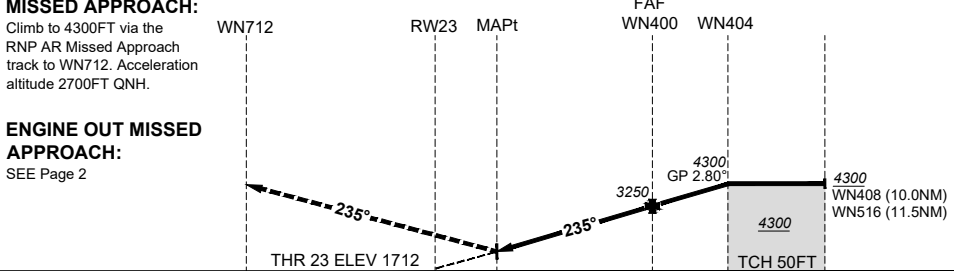
If required, Hold as depicted on Page 2

TR	INT	TIME	MIN ALT	DME LMT

AD ELEV 1724
Bearings are Magnetic Elevations in FEET AMSL

DISTANCE FM THR	RW23	0.8	WN400	WN404	WN408	WN516			
-----------------	------	-----	-------	-------	-------	-------	--	--	--

ALT (2.80° APCH PATH)		2006	3250	4300	4730	4880			
-----------------------	--	------	------	------	------	------	--	--	--



NM FM THR	8.1	0	5.0	8.5
-----------	-----	---	-----	-----

NOTES

- 1) Lateral transition to MAP must not be initiated prior to DA(H) PSN.
- 2) PAPI and glidepath not coincident.
- 3) Minimum MAP gradient (All Engines) 4.6% to 4300FT.
- 4) CAUTION: This approach is adjacent to procedures at KARLAWINDA MINE (YKWA).

CATEGORY	A	B	C	D
RNP (0.30)	NOT APPLICABLE		DA(H) 2006' (294)-1.6	
CIRCLING	NOT AUTHORISED			

202308101015COPYRIGHT 2023 NAVERUS, INC. USA, GE PROPRIETARY INFORMATION

Changes: EDITORIAL, KARLAWINDA ADD MINE, RNAV (RNP) TO RNP AR, RNP AR NOTES, REMOVED B737 NOTE

NWNGN05-177

DO NOT USE FOR NAVIGATION

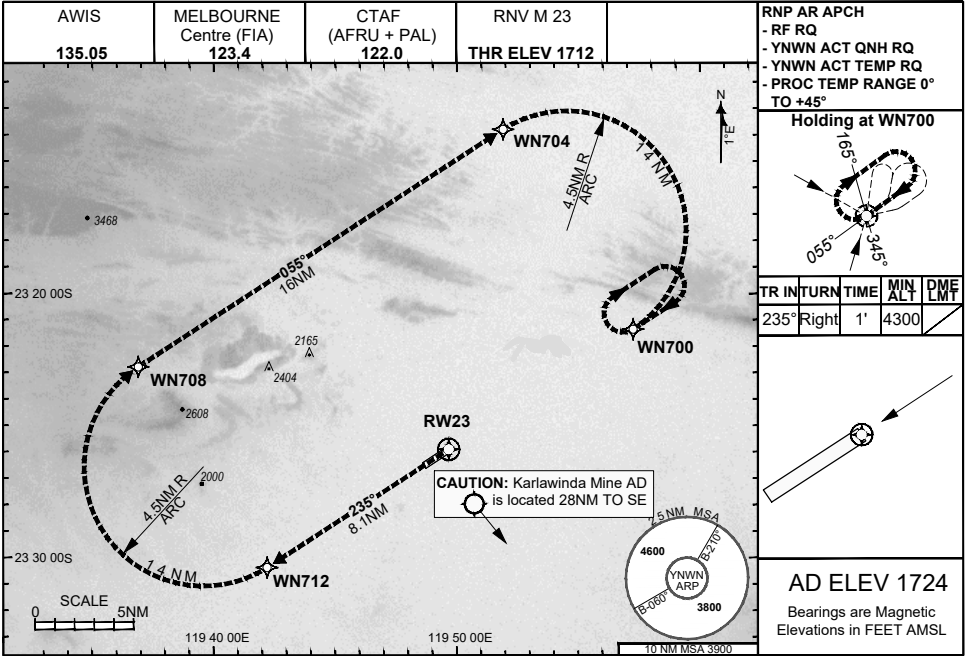
Prepared by GE Aviation



30 NOV 2023

USE QNH

NEWMAN, WA (YNWN)



ENGINE OUT MISSED APPROACH:

Track via the RNP AR Engine Out Missed Approach track to WN700 and hold as published.

Acceleration altitude 2700FT QNH (1000FT AGL).
Climb to 4300FT.

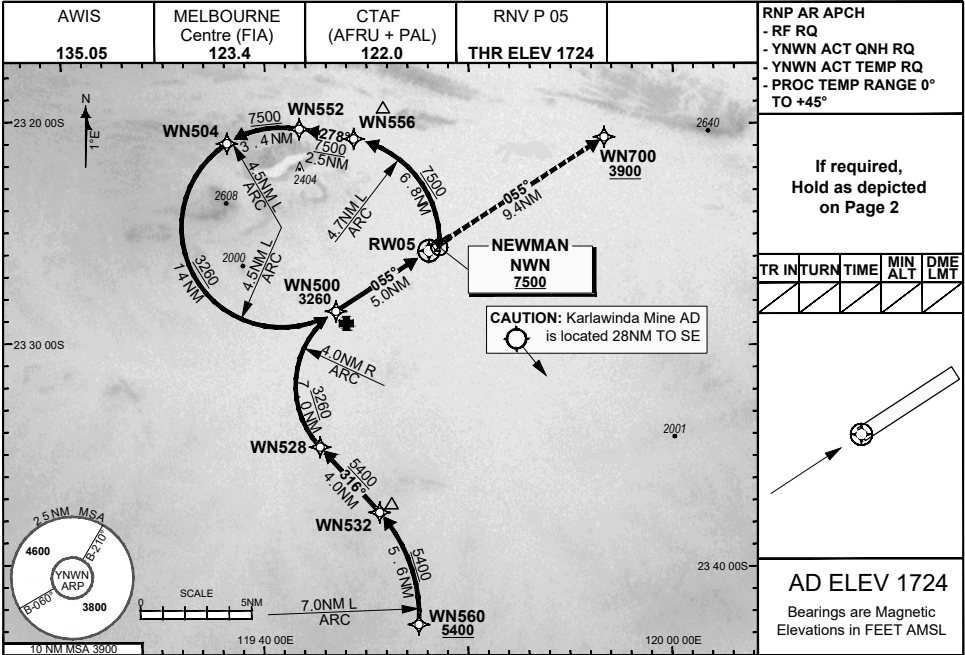


FOR CASA APPROVED OPERATORS ONLY

30 NOV 2023

USE QNH

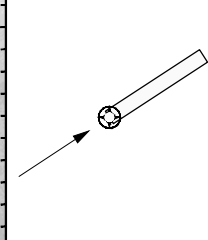
NEWMAN, WA (YNWN)



RNP AR APCH
 - RF RQ
 - YNWN ACT QNH RQ
 - YNWN ACT TEMP RQ
 - PROC TEMP RANGE 0° TO +45°

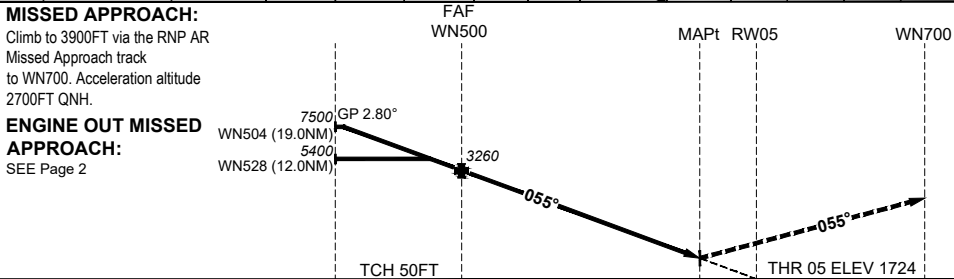
If required, Hold as depicted on Page 2

TR	INT	TURN	TIME	MIN ALT	DME LMT



AD ELEV 1724
 Bearings are Magnetic Elevations in FEET AMSL

DISTANCE FM THR	WN504	WN528	WN500	0.9	0.8	RW05				
ALT (2.80° APCH PATH)	7500	5400	3260	2030	2024					



NM FM THR	5.0	0	9.4
-----------	-----	---	-----

NOTES

CATEGORY	A	B	C	D
RNP (0.10)	NOT APPLICABLE		DA(H) 2024' (300)-1.6	
RNP (0.30)	NOT APPLICABLE		DA(H) 2030' (306)-1.6	
CIRCLING	NOT AUTHORISED			

- 1) Lateral transition to MAP must not be initiated prior to DA(H) PSN.
- 2) PAPI and glidepath not coincident.
- 3) Minimum MAP gradient (All Engines) 3.3% to 3900FT.

202308101020COPYRIGHT 2023 NAVERUS, INC. USA, GE PROPRIETARY INFORMATION

Changes: EDITORIAL, YKWA NAME, RNAV (RNP) TO RNP AR, RNP AR NOTES, 119 60 TO 120 00, NOTE 4) REMOVED NWNGN07-177

DO NOT USE FOR NAVIGATION

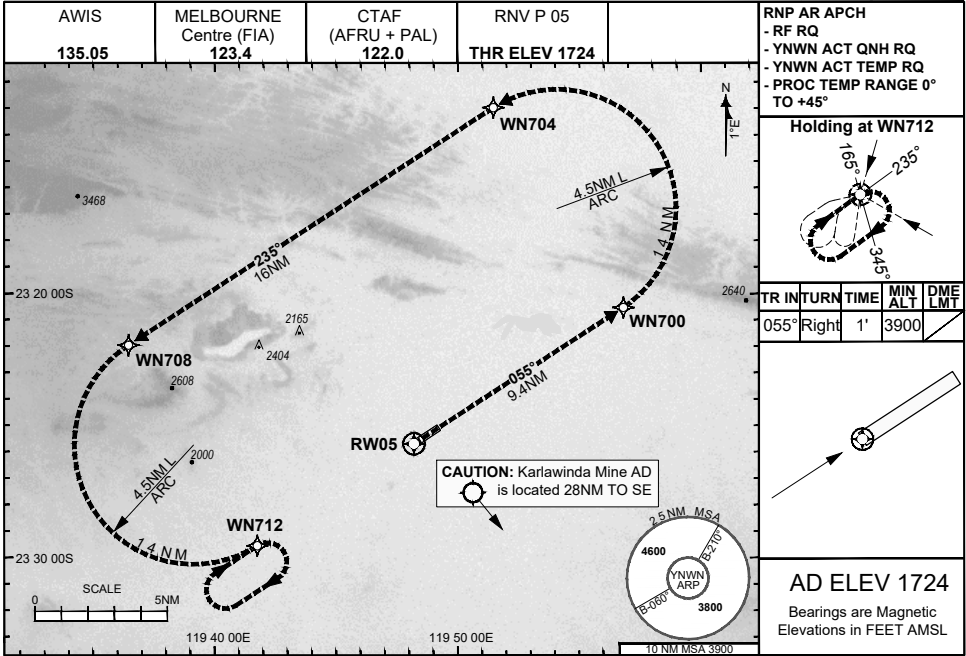
Prepared by GE Aviation



30 NOV 2023

USE QNH

NEWMAN, WA (YNWN)



ENGINE OUT MISSED APPROACH:

Track via the RNP AR Engine Out Missed Approach track to WN712 and hold as published.

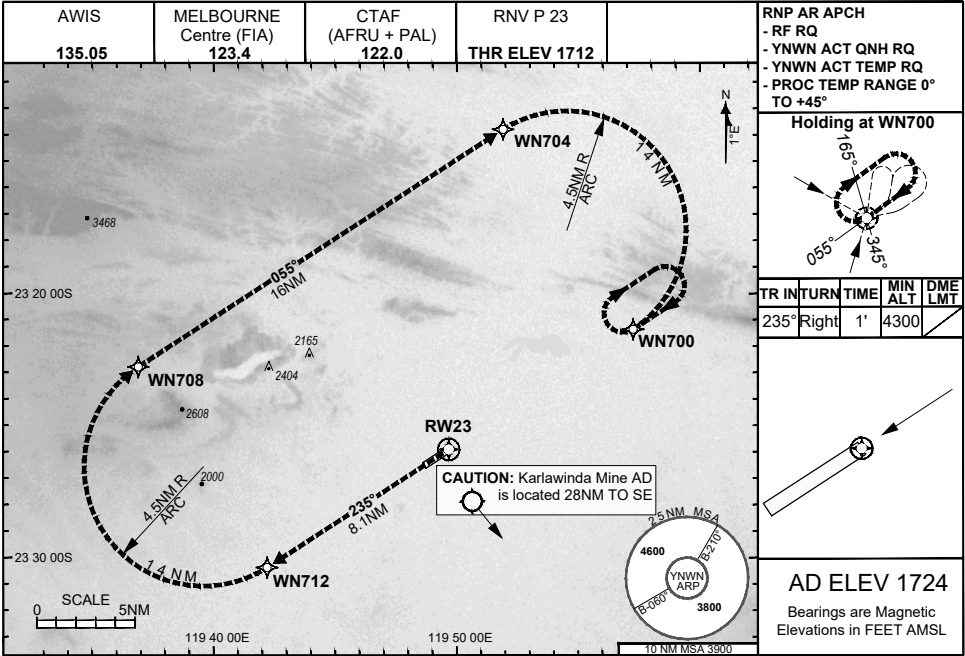
Acceleration altitude 2700FT QNH (1000FT AGL).
Climb to 3900FT.



30 NOV 2023

USE QNH

NEWMAN, WA (YNWN)



ENGINE OUT MISSED APPROACH:

Track via the RNP AR Engine Out Missed Approach track to WN700 and hold as published.

Acceleration altitude 2700FT QNH (1000FT AGL).
Climb to 4300FT.

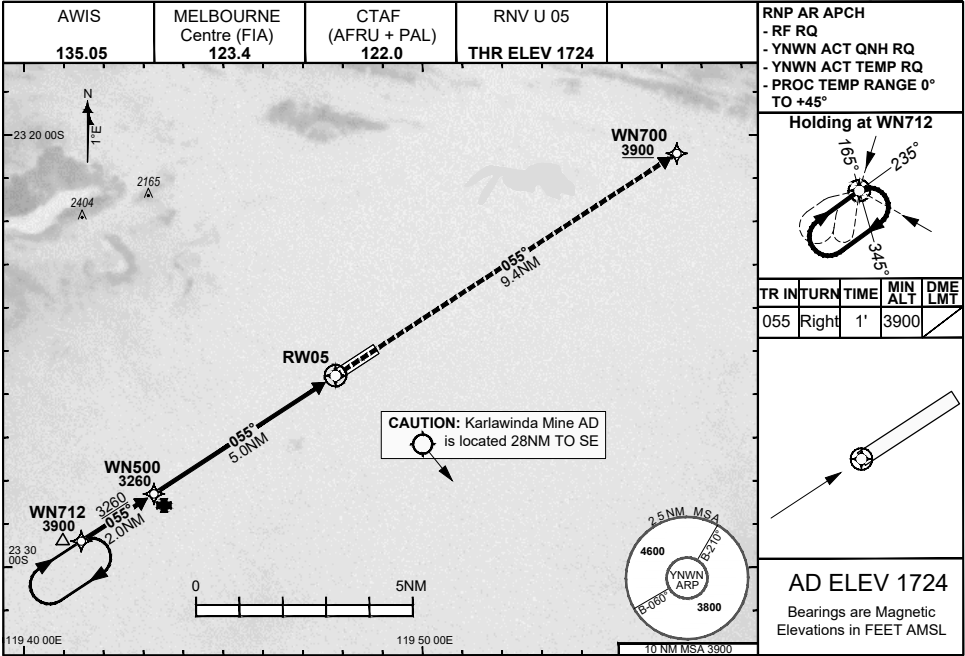


FOR CASA APPROVED OPERATORS ONLY

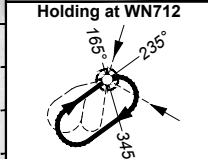
30 NOV 2023

USE QNH

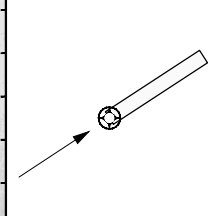
NEWMAN, WA (YNNW)



RNP AR APCH
 - RF RQ
 - YNNW ACT QNH RQ
 - YNNW ACT TEMP RQ
 - PROC TEMP RANGE 0° TO +45°

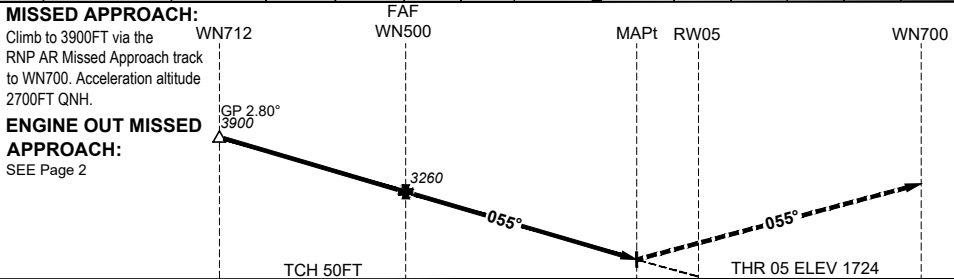


TR	INTURN	TIME	MIN ALT	DME LMT
055	Right	1'	3900	



AD ELEV 1724
 Bearings are Magnetic Elevations in FEET AMSL

DISTANCE FM THR	WN712	WN500	0.9	0.8	RW05			
ALT (2.80° APCH PATH)	3900	3260	2030	2024				



NM FM THR	7.0	5.0	0	9.4
THR				

NOTES

CATEGORY	A	B	C	D
RNP (0.10)	NOT APPLICABLE		DA(H) 2024' (300)-1.6	
RNP (0.30)	NOT APPLICABLE		DA(H) 2030' (306)-1.6	
CIRCLING	NOT AUTHORISED			

- 1) Lateral transition to MAP must not be initiated prior to DA(H) PNL.
- 2) PAPI and glidepath not coincident.
- 3) Minimum MAP gradient (All Engines) 3.3% to 3900FT.

202308101023COPYRIGHT 2023 NAVERUS, INC. USA, GE PROPRIETARY INFORMATION

Changes: EDITORIAL, KARLAWINDA ADD MINE, RNAV (RNP) TO RNP AR, RNP AR NOTES, NOTE 4) REMOVED

NWNGN11-177

DO NOT USE FOR NAVIGATION

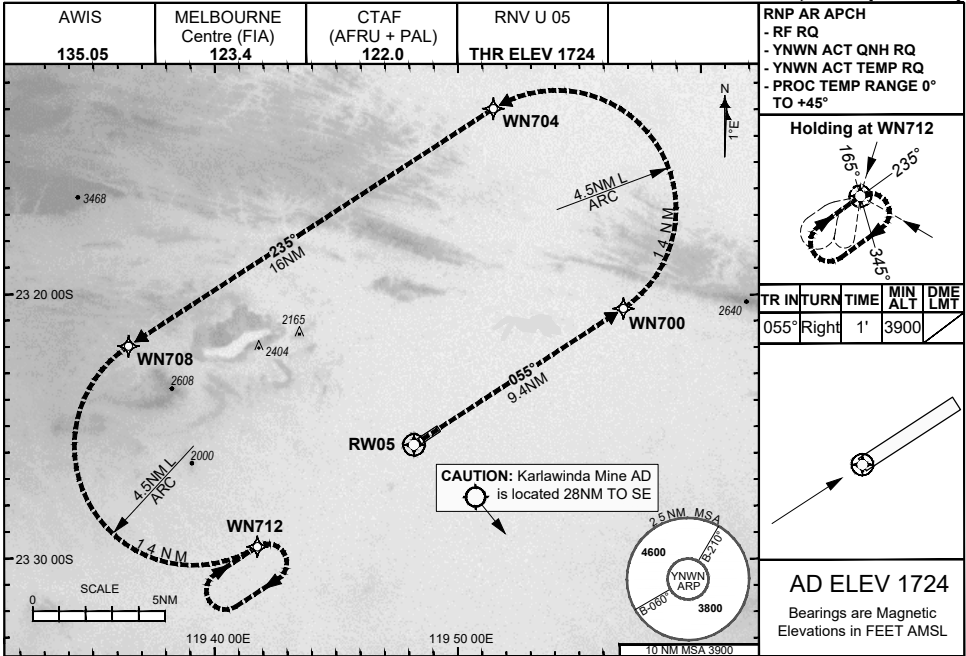
Prepared by GE Aviation



30 NOV 2023

USE QNH

NEWMAN, WA (YNWN)



ENGINE OUT MISSED APPROACH:

Track via the RNP AR Engine Out Missed Approach track to WN712 and hold as published.

Acceleration altitude 2700FT QNH (1000FT AGL).
Climb to 3900FT.

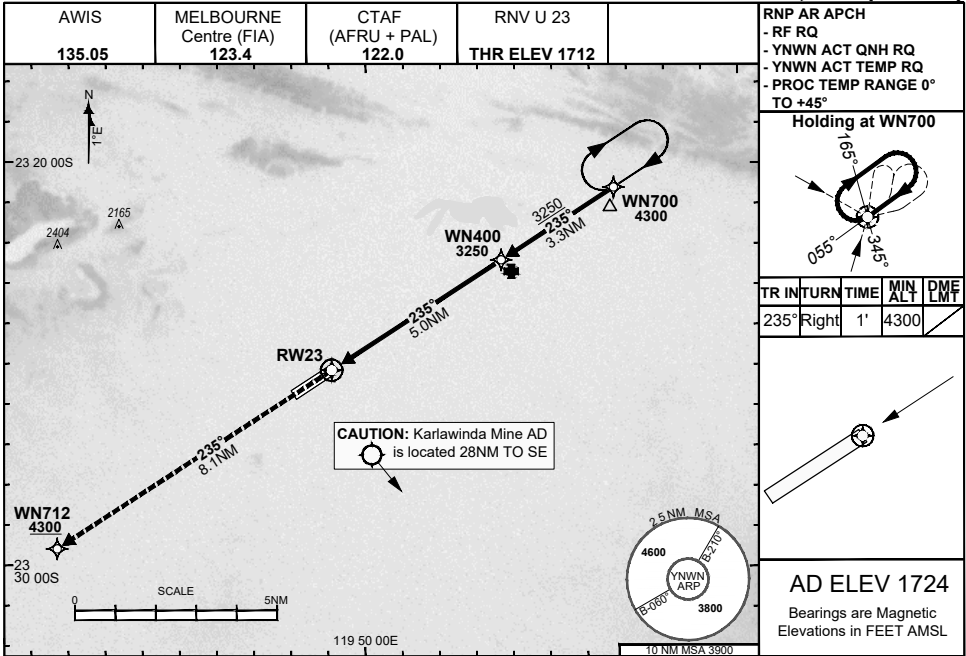


FOR CASA APPROVED OPERATORS ONLY

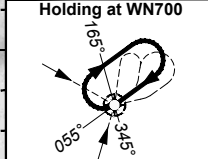
30 NOV 2023

USE QNH

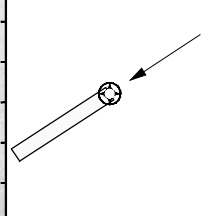
NEWMAN, WA (YNWN)



RNP AR APCH
 - RF RQ
 - YNWN ACT QNH RQ
 - YNWN ACT TEMP RQ
 - PROC TEMP RANGE 0° TO +45°



TR	INTURN	TIME	MIN ALT	DMF	LMT
235°	Right	1'	4300		



AD ELEV 1724
 Bearings are Magnetic Elevations in FEET AMSL

DISTANCE FM THR	RW23	0.8	WN400	WN700					
ALT (2.80° APCH PATH)		2006	3250	4300					

MISSED APPROACH:
 Climb to 4300FT via the RNP AR Missed Approach track to WN712. Acceleration altitude 2700FT QNH.

ENGINE OUT MISSED APPROACH:
 SEE Page 2

NM FM THR: 8.1, 0, 5.0, 8.3

NOTES

- 1) Lateral transition to MAP must not be initiated prior to DA(H) PNH.
- 2) PAPI and glidepath not coincident.
- 3) Minimum MAP gradient (All Engines) 4.6% to 4300FT.

CATEGORY	A	B	C	D
RNP (0.30)	NOT APPLICABLE		DA(H) 2006' (294)-1.6	
CIRCLING	NOT AUTHORISED			

202308101024COPYRIGHT 2023 NAVERUS, INC. USA, GE PROPRIETARY INFORMATION
 Changes: EDITORIAL, KARLAWINDA ADD MINE, RNAV (RNP) TO RNP AR, RNP AR NOTES, NOTE 4) REMOVED NWNGN13-177

DO NOT USE FOR NAVIGATION

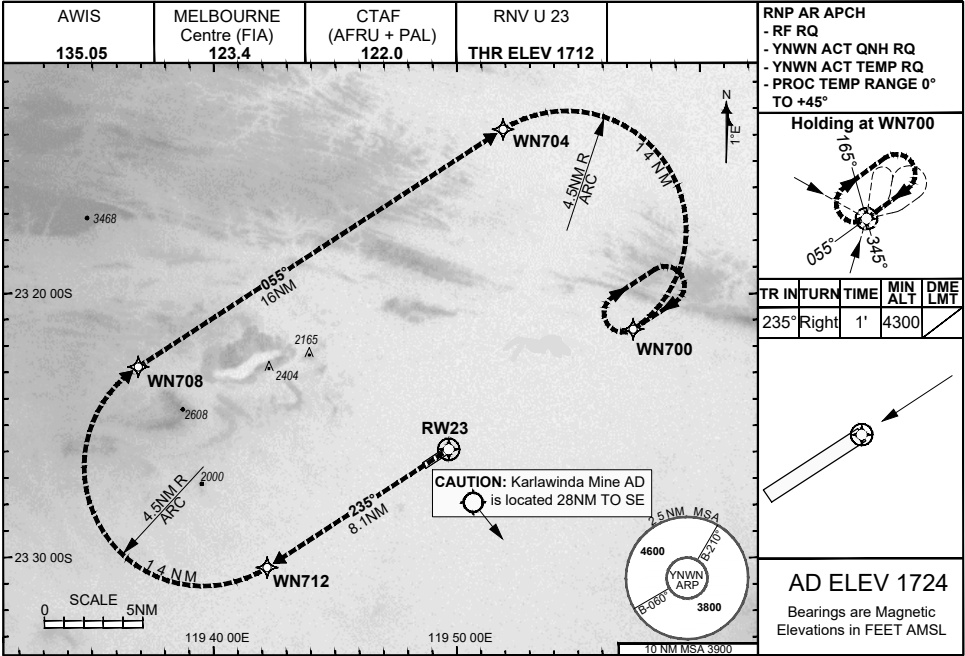
Prepared by GE Aviation



30 NOV 2023

USE QNH

NEWMAN, WA (YNWN)



ENGINE OUT MISSED APPROACH:

Track via the RNP AR Engine Out Missed Approach track to WN700 and hold as published.

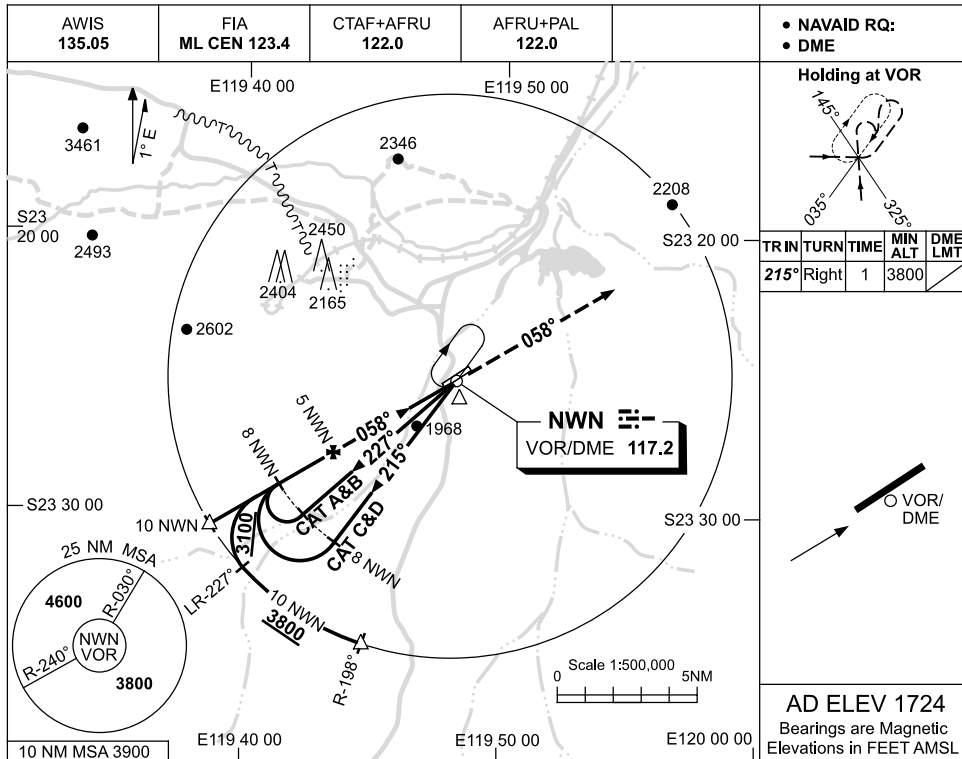
Acceleration altitude 2700FT QNH (1000FT AGL).
Climb to 4300FT.



USE QNH

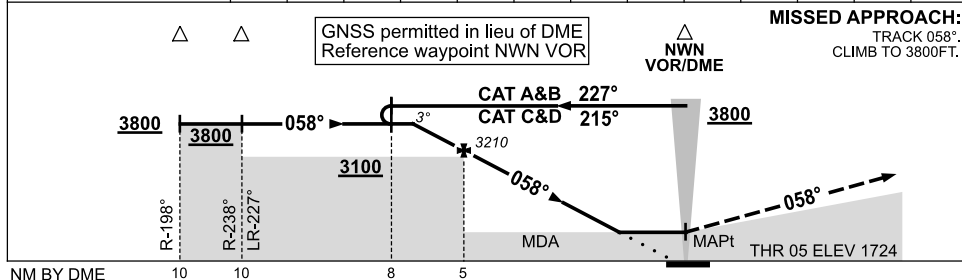
VOR-Z RWY 05
NEWMAN, WA (YNWN)

18 AUG 2016



AD ELEV 1724
 Bearings are Magnetic
 Elevations in FEET AMSL

DIST FM NWN DME	6.9	6	5	4	3	2.5														
ALT (3° APCH PATH)	3800	3530	3210	2890	2570	2410														



MISSED APPROACH:
 TRACK 058°.
 CLIMB TO 3800FT.

NOTES

CATEGORY	A	B	C	D
S-I VOR/DME	2410 (686-3.9)			
CIRCLING	2500 (776-2.4)	2730 (1006-4.0)	2860 (1136-5.0)	
ALTERNATE	(1276-4.4)	(1506-6.0)	(1636-7.0)	

1. MAX IAS:
 INITIAL : 210KT.

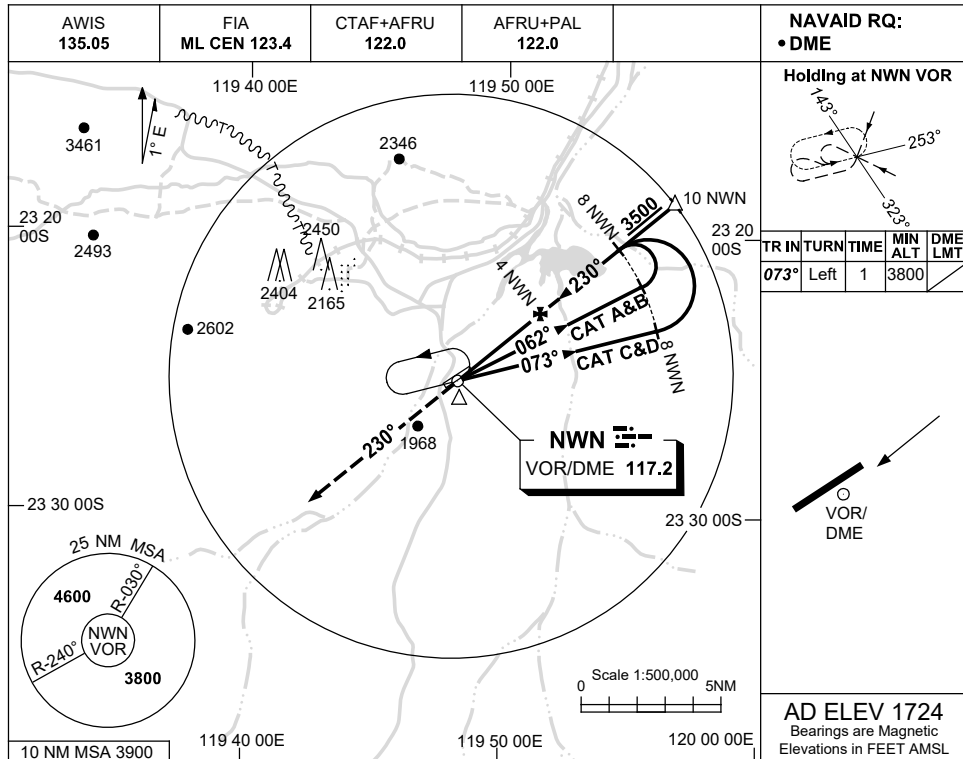
Changes: TIME LIMITS DELETED, Editorial.

NWNVO01-148

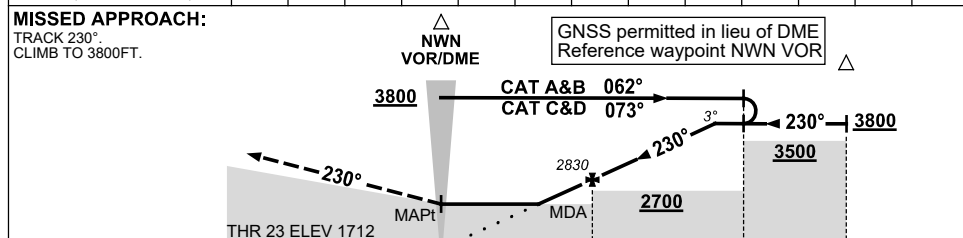
USE QNH

VOR RWY 23
NEWMAN, WA (YNWN)

24 MAR 2022



DIST TO NWN DME	2.2	3	4	5	6	7	7.1						
ALT (3° APCH PATH)	2260	2510	2830	3150	3470	3790	3800						



NM TO NWN DME: 0, 4, 8, 10

NOTES

CATEGORY	A	B	C	D
S-I VOR/DME	2260 (548-3.1)			
CIRCLING	2500 (776-2.4)	2730 (1006-4.0)	2860 (1136-5.0)	
ALTERNATE	(1276-4.4)	(1506-6.0)	(1636-7.0)	

1. MAX IAS:
 INITIAL : 210KT.

Changes: MIN SEGMENT ALTITUDE CORRECTION.

NWNVO02-170

