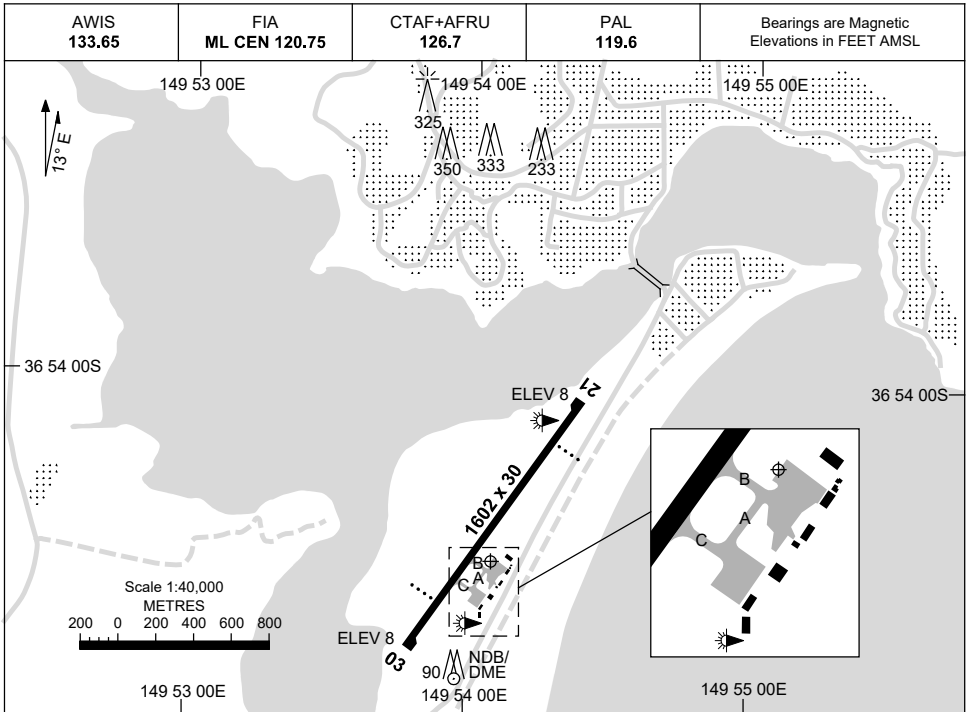


7 SEP 2023

AD ELEV 8
36 54 31S 149 54 05E

AERODROME CHART
MERIMBULA, NSW (YMER)



	AERODROME LIGHTING
RWY	TAXIWAYS : BLUE EDGE RL : PAL 119.6
03 <small>021</small>	PAPI 3.28° 45.8FT LIRL
<small>201</small> 21	PAPI 3.0° 41.5FT LIRL

NOTES

1. AWIS ACTIVATED BY 1 SEC TRANSMISSION.

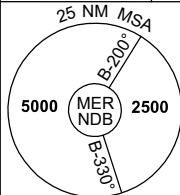
Changes: NOTES.

MERAD01-176

DME or GNSS ARRIVAL PROCEDURES MERIMBULA, NSW (YMER)

1 DEC 2022

AWIS 133.65	FIA ML CEN 120.75	CTAF+AFRU 126.7	PAL 119.6		Bearings are Magnetic Elevations in FEET AMSL
----------------	----------------------	--------------------	--------------	--	--

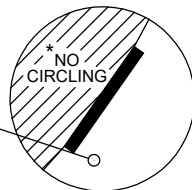


**DME USING MER DME
REFERENCE WAYPOINT MER NDB**

MER

NDB 395

DME 117.7



10 NM MSA 4200

* NO CIRCLING WEST
OF RWY 03/21

AD ELEV 8

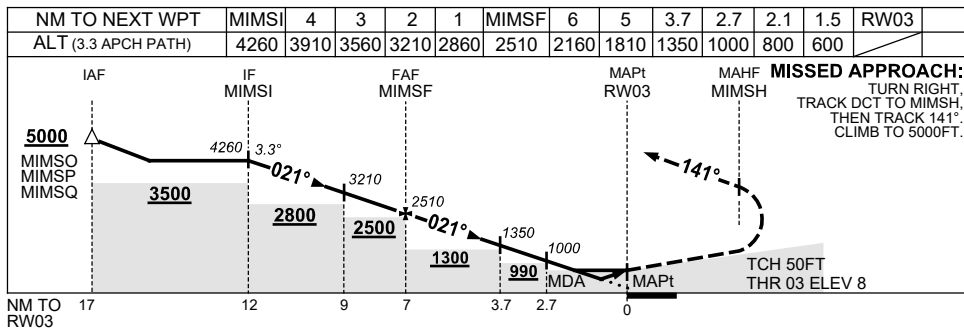
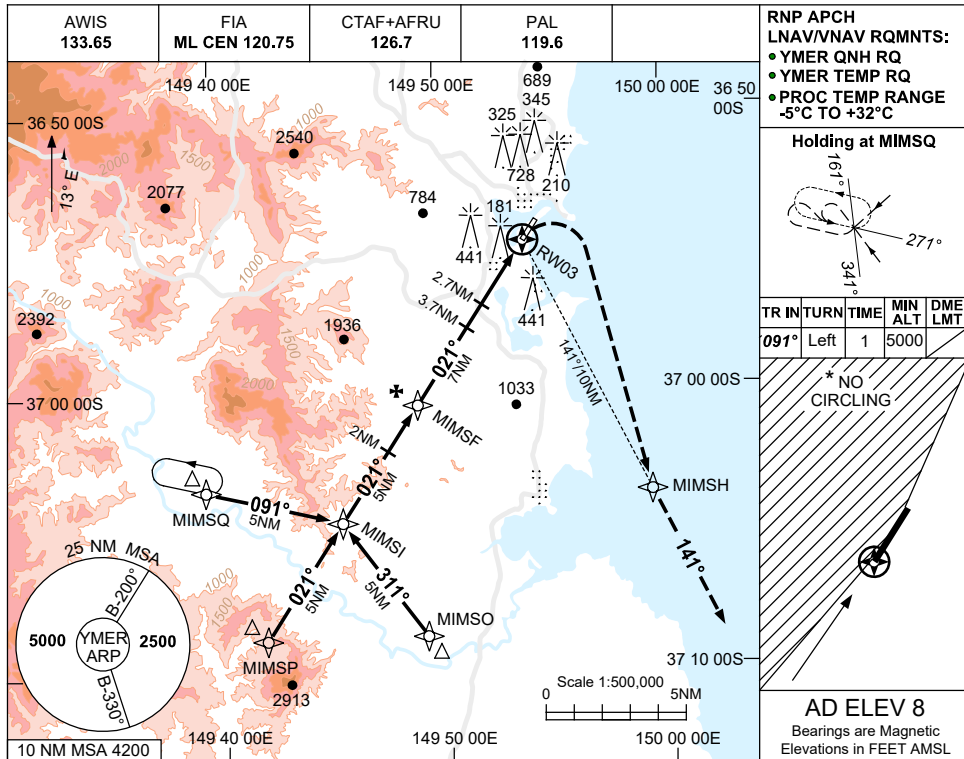
ALL ROUTES TO MER NDB												MISSED APPROACH: TURN AS APPROPRIATE, TRACK 090°. CLIMB TO 5000FT. NOTE: 1. MAX IAS: MISSED APCH TURN 230KT.		
	NM TO MER NDB	25	15	10	7	5	4	2	0					
CIRCLING MINIMA	A,B: 1240-2.4				C: 1270-4.0			D: N/A						
NM TO MER NDB	12.1	12	11	10	9	8	7	6	5	4	3	2	1	0.3
ALT (3° APCH PATH)	5000	4960	4640	4320	4010	3690	3370	3050	2730	2410	2100	1780	1460	1240

USE QNH

RNP RWY 03

23 MAR 2023

MERIMBULA, NSW (YMER)



NOTES

- MAX IAS: INITIAL : 210KT.
- * NO CIRCLING WEST OF RWY 03/21.
- COLOUR: SEE SPEC NOTICES.

CATEGORY	A	B	C	D
LNAV/VNAV		600 (592-3.1)		NOT APPLICABLE
LNAV		800 (792-4.1)		
CIRCLING *	1140 (1132-2.4)		1270(1262-4.0)	
ALTERNATE	(1632-4.4)		(1762-6.0)	

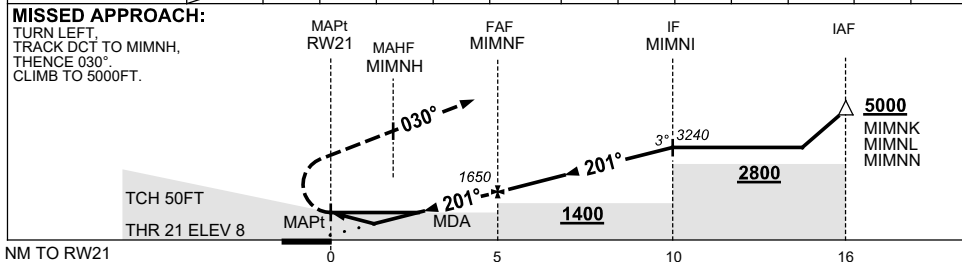
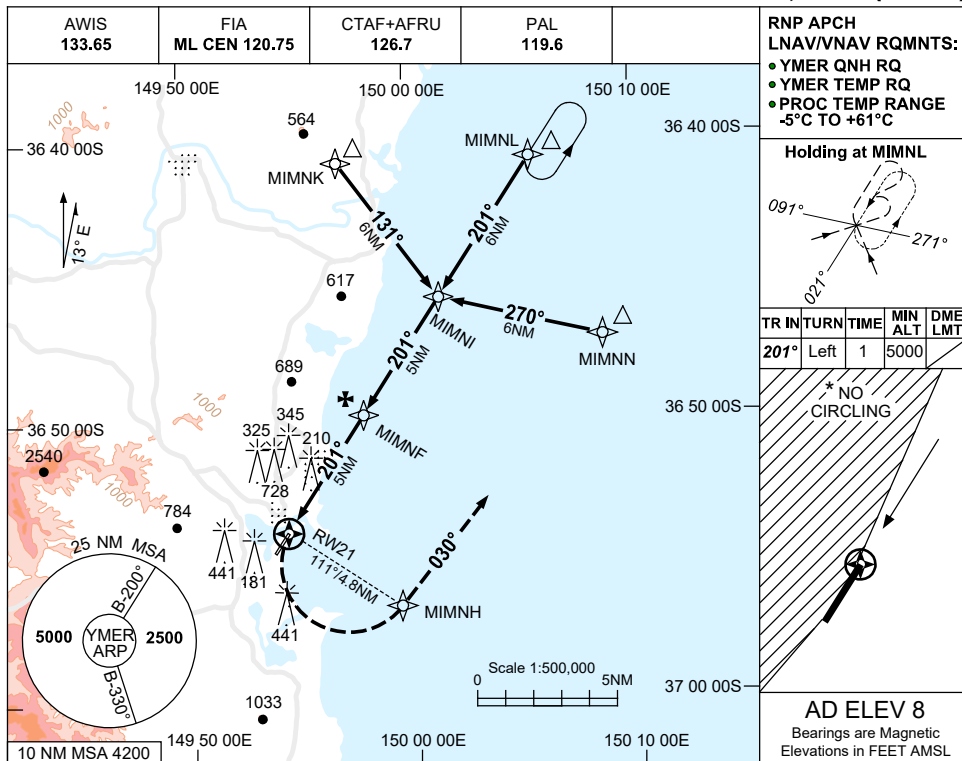
Changes: CHART TITLE, PBN SPECIFICATION BOX.

MERGN01-174

USE QNH

RNP RWY 21
MERIMBULA, NSW (YMER)

23 MAR 2023



CATEGORY	A	B	C	D
LNAV/VNAV		670 (662-3.8)		NOT APPLICABLE
LNAV		830 (822-4.7)		
CIRCLING *	1140 (1132-2.4)		1270 (1262-4.0)	
ALTERNATE	(1632-4.4)		(1762-6.0)	

- NOTES**
- MAX IAS: INITIAL : 210KT.
 - * NO CIRCLING WEST OF RWY 03/21.
 - COLOUR: SEE SPEC NOTICES.

Changes: CHART TITLE, PBN SPECIFICATION BOX.

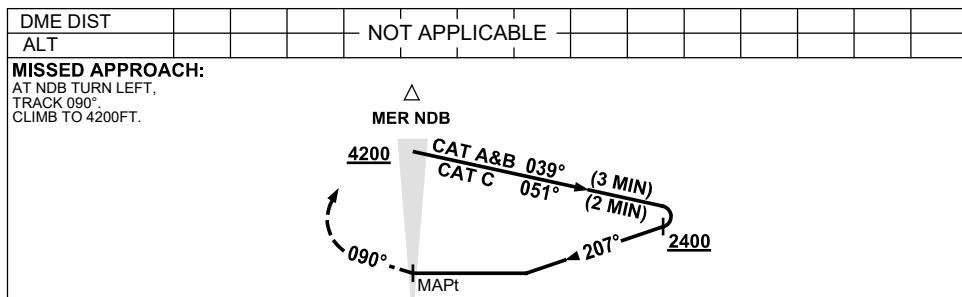
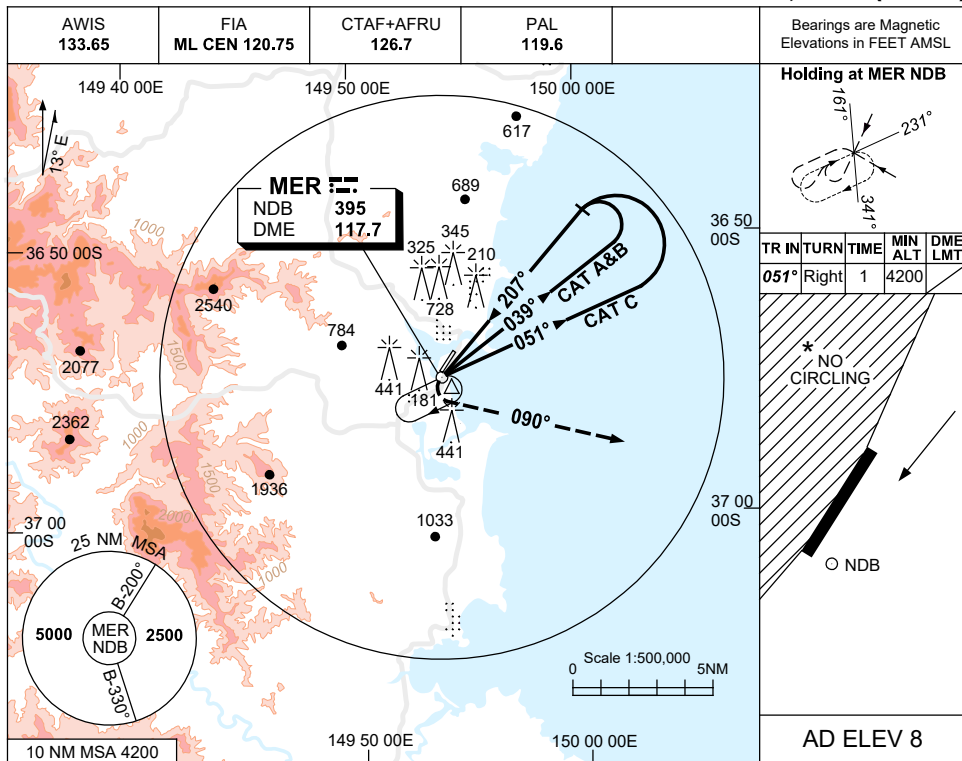
MERGN02-174

USE QNH

NDB-A

9 SEP 2021

MERIMBULA, NSW (YMER)



NOTES

CATEGORY	A	B	C	D
				NOT APPLICABLE
CIRCLING*	1140 (1132-2.4)		1270(1262-4.0)	
ALTERNATE	(1632-4.4)		(1762-6.0)	

1. MAX IAS: INITIAL : 210KT.
- * 2. NO CIRCLING WEST OF RWY 03/21.
3. COLOUR: SEE SPEC NOTICES.

Changes: AD ELEV, MINIMA.

MERNB01-168