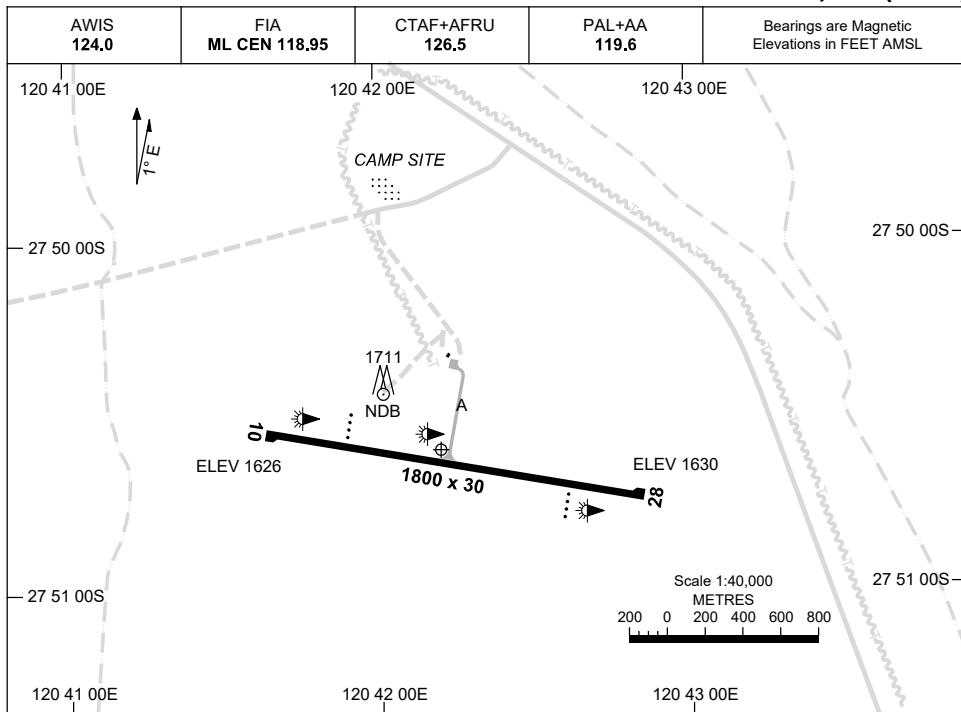


30 NOV 2023

AD ELEV 1631
27 50 36S 120 42 12E

AERODROME CHART
LEINSTER, WA (YLST)



	AERODROME LIGHTING
RWY	TAXIWAY : BLUE EDGE RL : PAL+AA 119.6, SDBY (8 SEC)
10 ⁰⁹⁹	PAPI 3.0° 44FT LIRL
²⁷⁹ 28	PAPI 3.0° 43FT LIRL

NOTES

1. LIRL ACTIVATED HN.
2. FIA FREQ 118.95 AVBL CIRCUIT AREA.

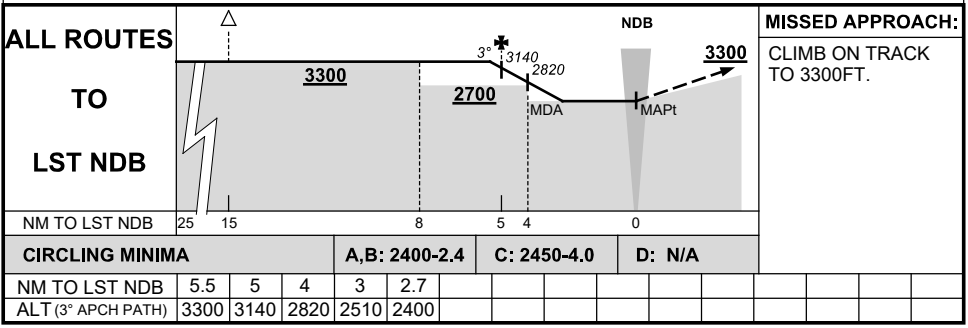
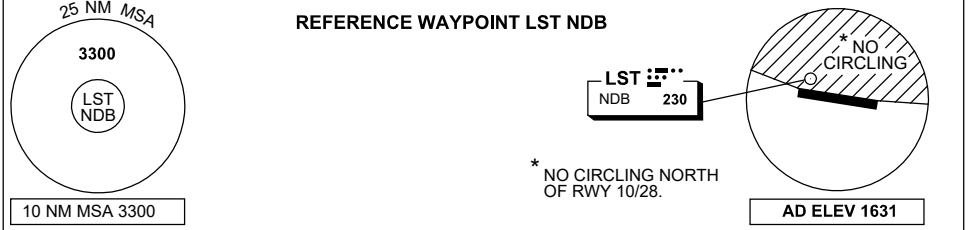
Changes: TURN PADS ADDED.

LSTAD01-177

GNSS ARRIVAL PROCEDURES LEINSTER, WA (YLST)

8 SEP 2022

AWIS 124.0	FIA ML CEN 118.95	CTAF+AFRU 126.5	PAL+AA 119.6		Bearings are Magnetic Elevations in FEET AMSL
---------------	----------------------	--------------------	-----------------	--	--------------------------------------------------



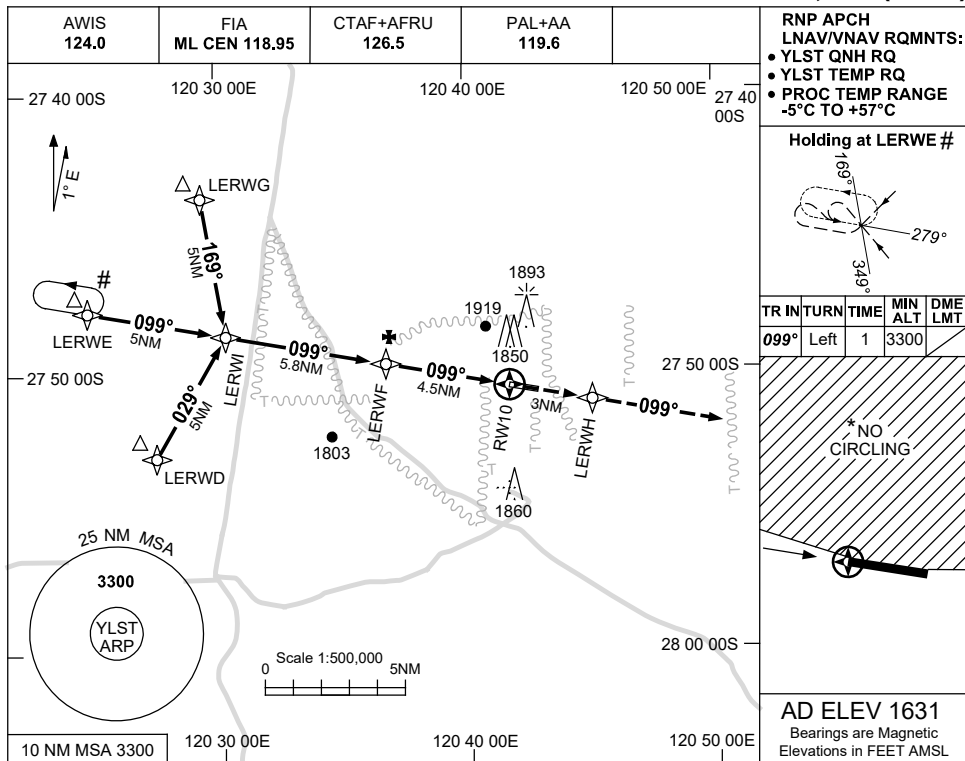
Changes: 10 NM MSA, 25 NM MSA.

LSTDG01-172

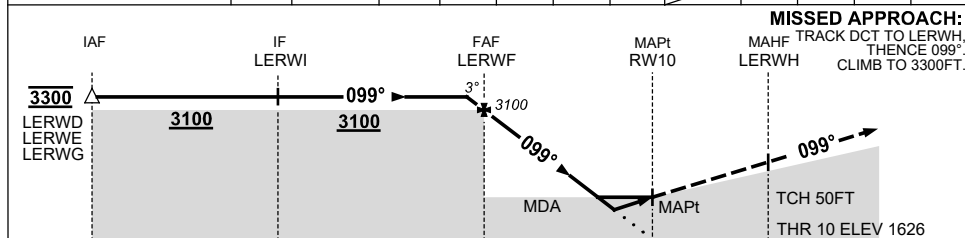
USE QNH

RNP RWY 10
LEINSTER, WA (YLST)

7 SEP 2023



NM TO NEXT WPT	0.6	LERWF	4	3	2	1.6	0.8	RW10				
ALT (3° APCH PATH)	3300	3100	2950	2630	2310	2170	1940					



NM TO RW10: 15.3, 10.3, 4.5, 0, 3

- NOTES**
1. MAX IAS: INITIAL : 230KT.
 - * 2. NO CIRCLING NORTH OF RWY 10/28.
 - # 3. ACFT MUST CTC YBLU PRIOR TO HOLD ON CTAF.
- CAUTION: PROC IS OVERLAID BY YBLU RNP RWY 01.**

CATEGORY	A	B	C	D
LNAV/VNAV		1940 (314-1.7)		NOT APPLICABLE
LNAV		2170 (539-3.1)		
CIRCLING*	2350 (719-2.4)		2450 (819-4.0)	
ALTERNATE	(1219-4.4)		(1319-6.0)	

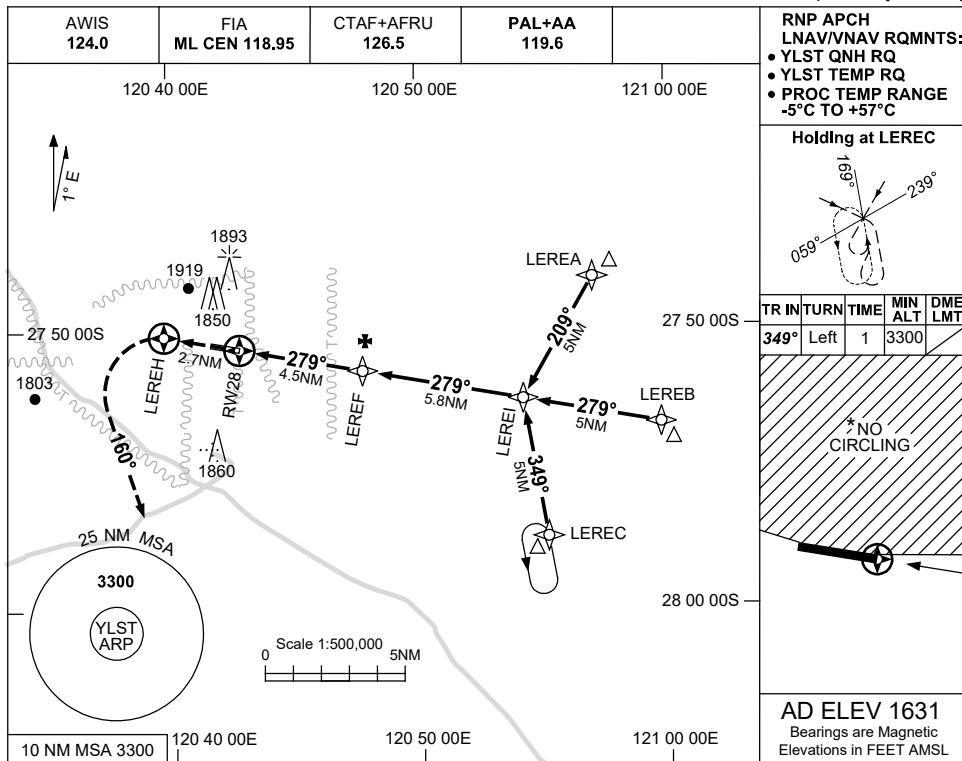
Changes: CHART TITLE, PBN SPECIFICATION BOX, NOTE 3, Editorial.

LSTGN01-176

USE QNH

RNP RWY 28
LEINSTER, WA (YLST)

7 SEP 2023



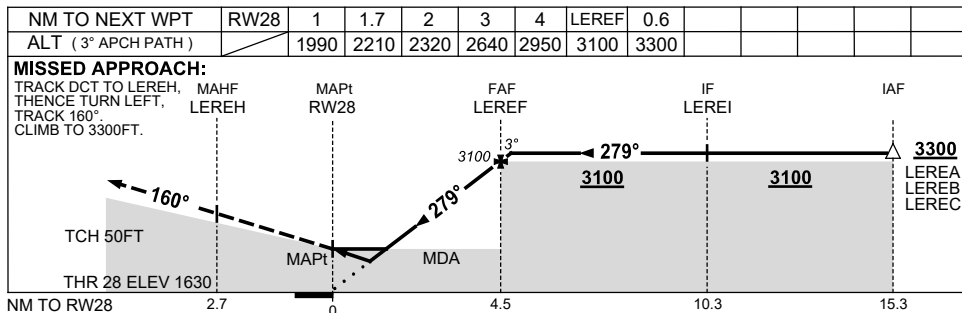
RNP APCH
LNAV/VNAV RQMNTS:
• YLST QNH RQ
• YLST TEMP RQ
• PROC TEMP RANGE
-5°C TO +57°C

Holding at LEREC

TR IN	TURN	TIME	MIN ALT	DME LMT
349°	Left	1	3300	

* NO CIRCLING

AD ELEV 1631
Bearings are Magnetic
Elevations in FEET AMSL



NOTES

CATEGORY	A	B	C	D
LNAV/VNAV		1990 (360-2.0)		NOT APPLICABLE
LNAV		2210 (579-3.3)		
CIRCLING *	2350 (719-2.4)	2450 (819-4.0)		
ALTERNATE	(1219-4.4)	(1319-6.0)		

- MAX IAS: INITIAL : 230KT.
 - NO CIRCLING NORTH OF RWY 10/28.
- CAUTION:** PROC IS OVERLAI BY YBLU RNP RWY 01.

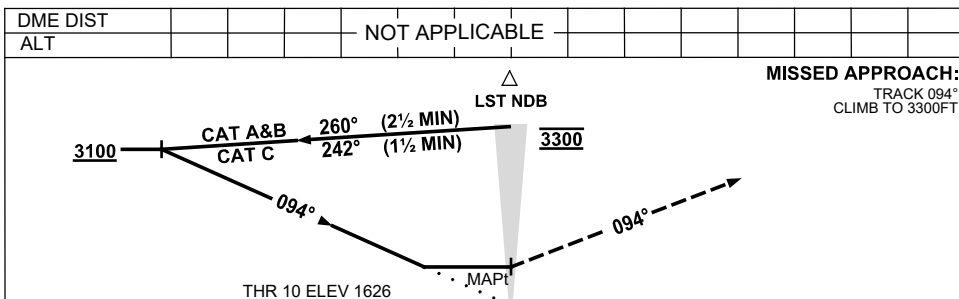
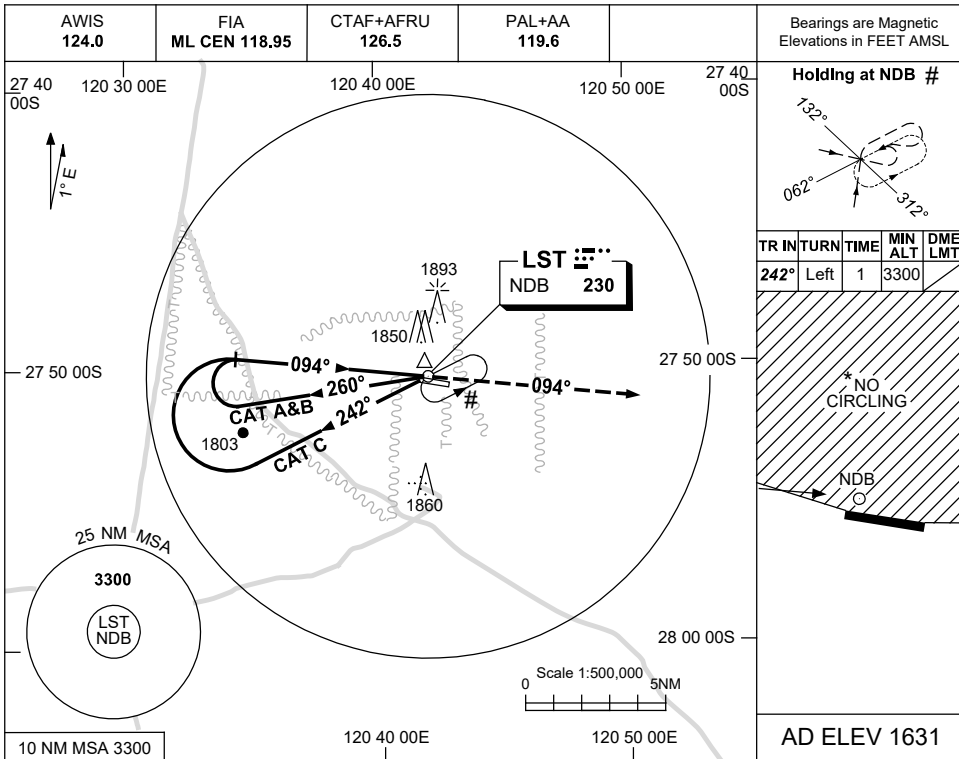
Changes: CHART TITLE, PBN SPECIFICATION BOX, NOTE 2, Editorial.

LSTGN02-176

USE QNH

NDB RWY 10
LEINSTER, WA (YLST)

7 SEP 2023



NOTES

1. MAX IAS:
INITIAL : 210KT.
 - * 2. NO CIRCLING NORTH OF RWY 10/28.
 - # 3. ACFT MUST CTC YBLU PRIOR TO HOLD ON CTAF.
- CAUTION:** PROC IS OVERLAID BY YBLU RNP RWY 01.

CATEGORY	A	B	C	D
S-I NDB	2320 (689-3.9)			NOT APPLICABLE
CIRCLING *	2350 (719-2.4)	2450 (819-4.0)		
ALTERNATE	(1219-4.4)		(1319-6.0)	

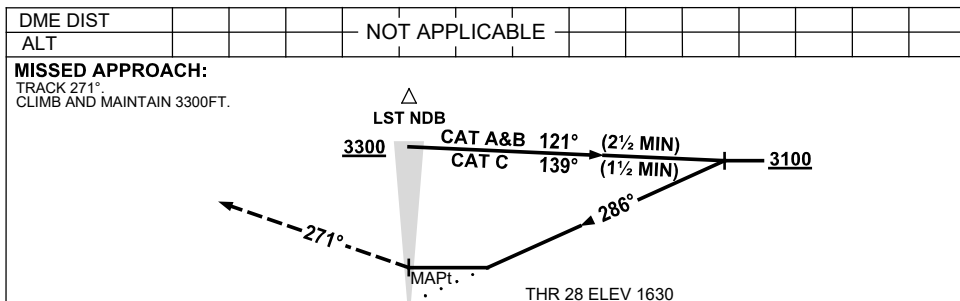
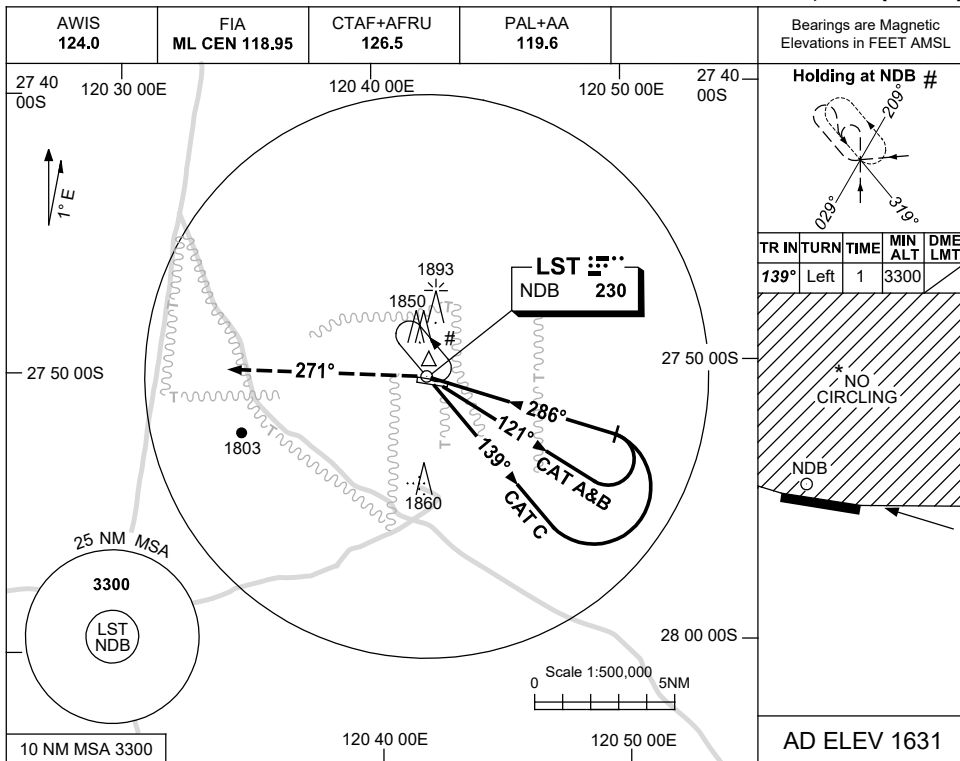
Changes: NOTE 3.

LSTNB01-176

USE QNH

NDB RWY 28
LEINSTER, WA (YLST)

7 SEP 2023



NOTES

1. MAX IAS:
INITIAL : 210KT.
- *2. NO CIRCLING NORTH OF RWY 10/28.
- #3. ACFT MUST CTC YBLU PRIOR TO HOLD ON CTAF.
CAUTION: PROC IS OVERLAI BY YBLU RNP RWY 01.

CATEGORY	A	B	C	D
S-I NDB	2250 (619-3.5)			NOT APPLICABLE
CIRCLING *	2350 (719-2.4)	2450 (819-4.0)		
ALTERNATE	(1219-4.4)	(1319-6.0)		

Changes: NOTE 3.

LSTNB02-176