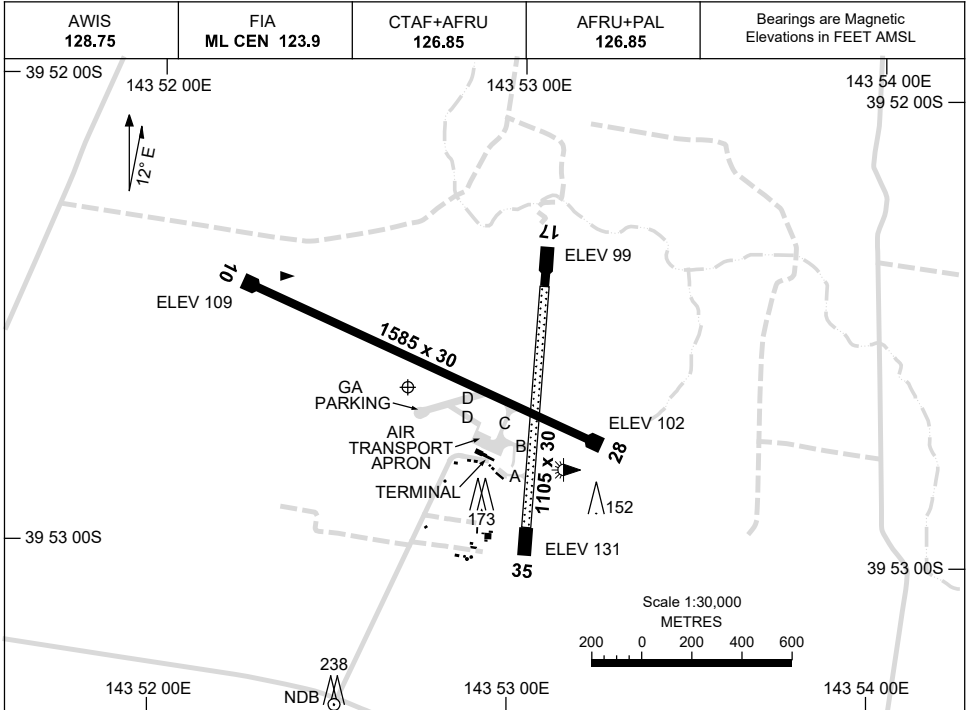


7 SEP 2023

AD ELEV 132  
39 52 39S 143 52 42E

**AERODROME CHART**  
**KING ISLAND, TAS (YKII)**



<b>AERODROME LIGHTING</b>	
<b>RWY</b>	TAXIWAY : BLUE EDGE ON RWY 10/28 TURN PADS RL : AFRU+PAL 126.85 , SDBY (15 SEC), PTBL IN MED EMERG WITH 60 MIN PN TO ARO RQ (ARO : 03 6462 9000)
<b>10</b> <sup>103</sup>	LIRL
<sup>283</sup> <b>28</b>	LIRL
<b>17</b> <sup>172</sup>	PTBL
<sup>352</sup> <b>35</b>	PTBL

**NOTES**

- VHF TRANSMISSIONS FROM TAXI ACFT MAY BE SUBJECT TO GROUND SHIELDING.
- AWIS RQ 1 SEC PULSE TO ACTIVATE.

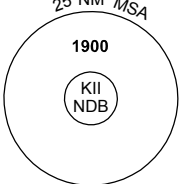
Changes: NOTES.

KIAD01-176

# GNSS ARRIVAL PROCEDURES KING ISLAND, TAS (YKII)


9 SEP 2021

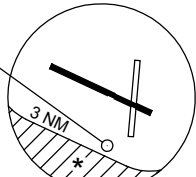
AWIS 128.75	FIA ML CEN 123.9	CTAF+AFRU 126.85	AFRU+PAL 126.85		Bearings are Magnetic. Elevations in FEET AMSL
----------------	---------------------	---------------------	--------------------	--	---



25 NM MSA  
1900  
KII NDB

**REFERENCE WAYPOINT KII NDB**





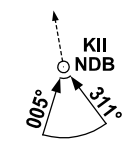
3 NM

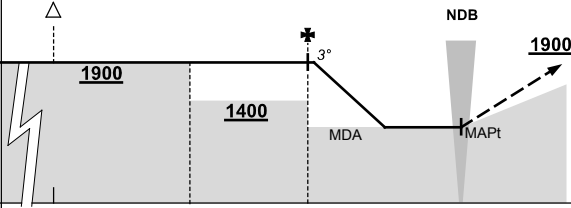
\* NO CIRCLING BEYOND 3NM SOUTH OF RWY 10/28.

10 NM MSA 1900

AD ELEV 132

**SECTOR A**





NDB

1900

3°

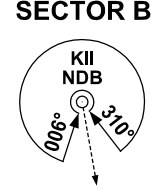
MDA

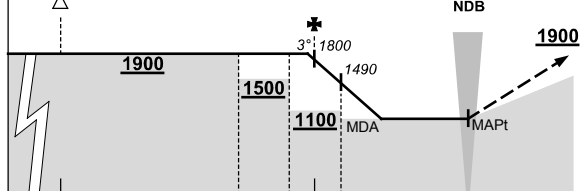
MAPt

**MISSED APPROACH:**  
CLIMB ON TRACK TO 1900FT.

NM TO KII NDB	25	16	10	6	0														
<b>CIRCLING MINIMA</b>	<b>A,B: 1100-2.4</b>				<b>C: 1100-4.0</b>				<b>D: N/A</b>										
NM TO KII NDB	5.9	5	4	3.4															
ALT (3° APCH PATH)	1900	1620	1300	1100															

**SECTOR B**





NDB

1900

3°

1800

1490

MDA

MAPt

**MISSED APPROACH:**  
CLIMB ON TRACK TO 1900FT.

NM TO KII NDB	25	16	9	7	6	5	0												
<b>CIRCLING MINIMA</b>	<b>A,B: 980-2.4</b>				<b>C: 980-4.0</b>				<b>D: N/A</b>										
NM TO KII NDB	6.3	5	4	3.4															
ALT (3° APCH PATH)	1900	1490	1170	980															

Changes: MSA, IAF ALT, MISSED APCH ALT, SECTOR A MINIMA.

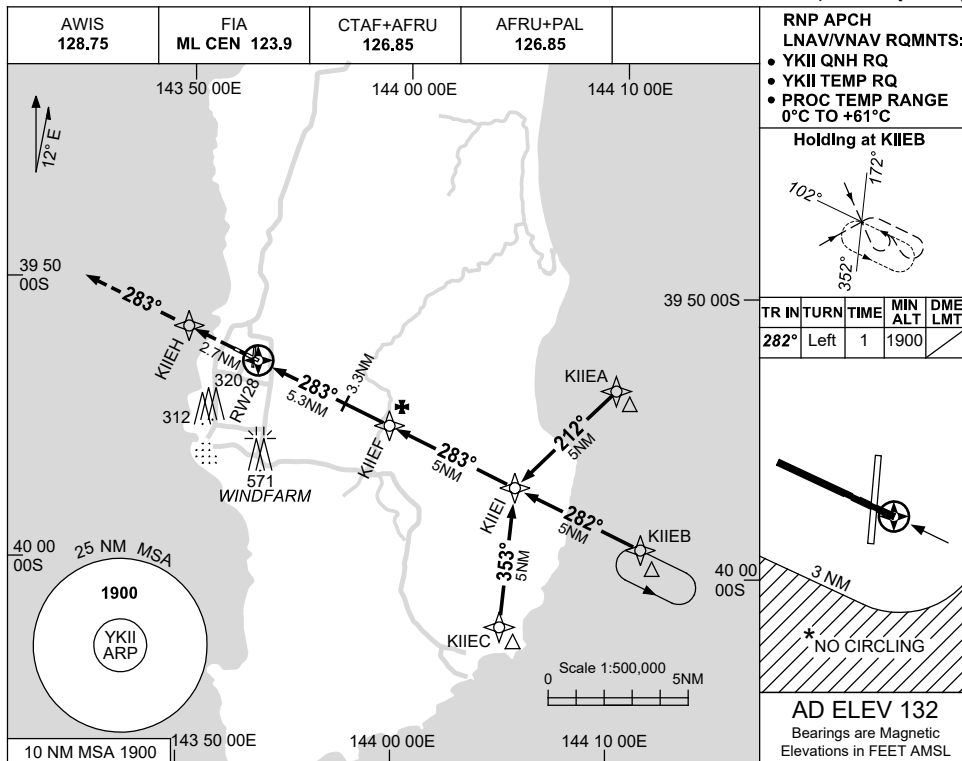
KIIDG01-168

USE QNH

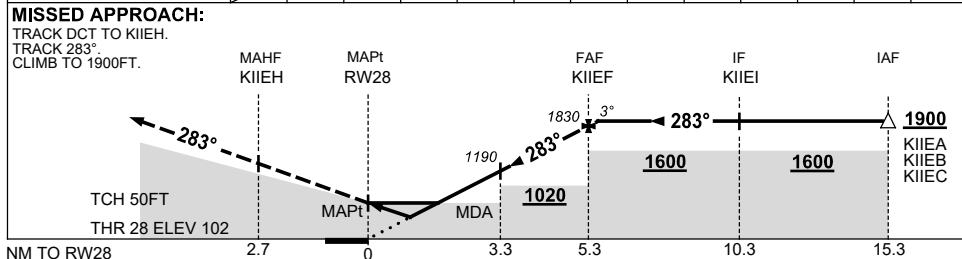
RNP RWY 28

**KING ISLAND, TAS (YKII)**

15 JUN 2023



NM TO NEXT WPT	RW28	1.2	1.8	2	3	4	KIIEF	0.2				
ALT (3° APCH PATH)		530	730	790	1110	1430	1830	1900				



**NOTES**

CATEGORY	A	B	C	D
LNAV/VNAV	530 (428-2.4)			NOT APPLICABLE
LNAV	730 (628-3.6)			
CIRCLING *	840 (708-2.4)		940 (808-4.0)	
ALTERNATE	(1208-4.4)		(1308-6.0)	

- MAX IAS: INITIAL : 210KT
- \* 2. NO CIRCLING BEYOND 3NM SOUTH OF RWY 10/28.

Changes: CHART TITLE, PBN SPECIFICATION BOX, Editorial.

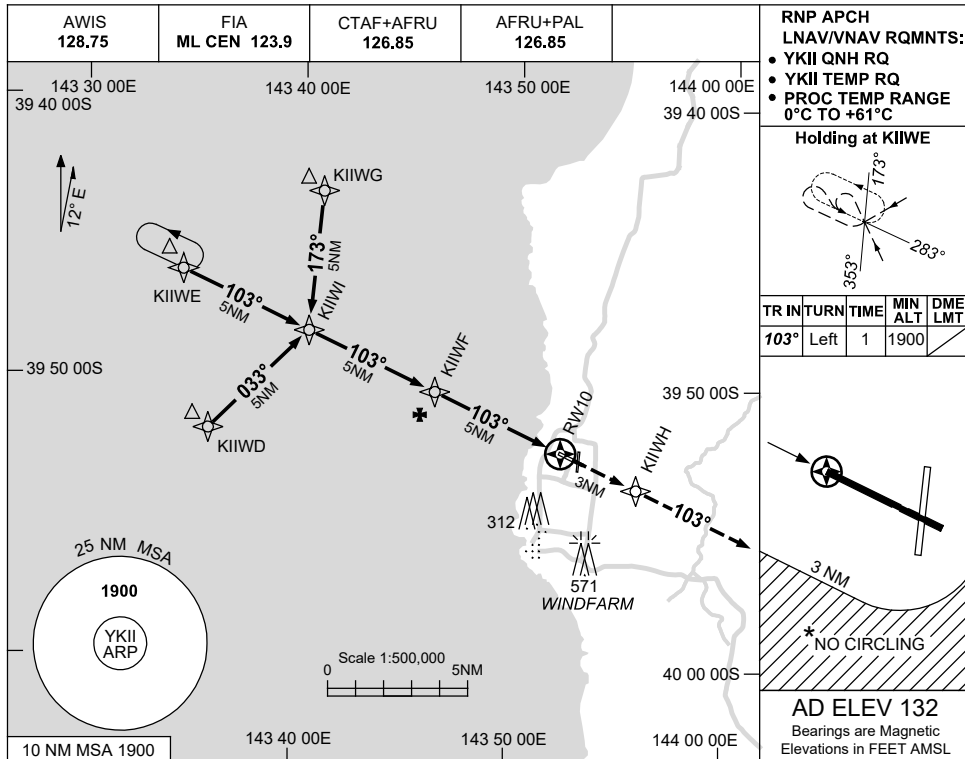
KIIGN01-175

USE QNH

RNP RWY 10

KING ISLAND, TAS (YKII)

15 JUN 2023

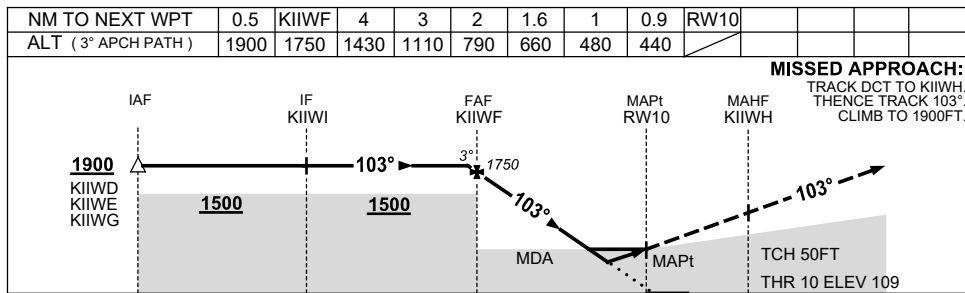


**RNP APCH**  
 LNAV/VNAV RQMTS:  
 • YKII QNH RQ  
 • YKII TEMP RQ  
 • PROC TEMP RANGE 0°C TO +61°C

**Holding at KIIWE**

TR IN	TURN	TIME	MIN ALT	DME LMT
103°	Left	1	1900	

**AD ELEV 132**  
 Bearings are Magnetic  
 Elevations in FEET AMSL



**NOTES**

CATEGORY	A	B	C	D
LNAV/VNAV	440 (331-1.8)			NOT APPLICABLE
LNAV	660 (551-3.1)			
CIRCLING *	840 (708-2.4)		940 (808-4.0)	
ALTERNATE	(1208-4.4)		(1308-6.0)	

- MAX IAS: INITIAL : 210KT.
- \* 2. NO CIRCLING BEYOND 3NM SOUTH OF RWY 10/28.

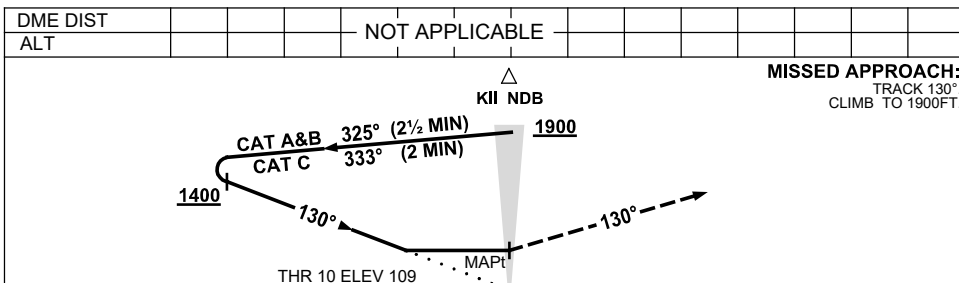
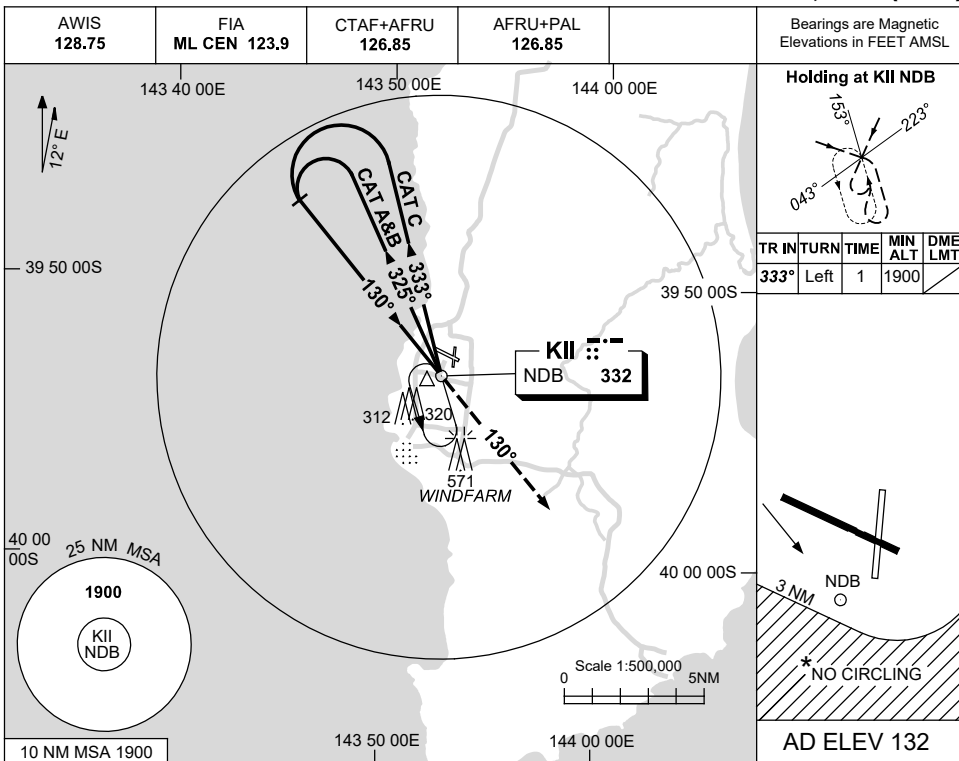
Changes: CHART TITLE, PBN SPECIFICATION BOX, Editorial.

KIIGN02-175

USE QNH

NDB RWY 10  
KING ISLAND, TAS (YKII)

9 SEP 2021



**NOTES**

CATEGORY	A	B	C	D
S-I NDB	710 (601-3.4)		CIRCLING ONLY	NOT APPLICABLE
CIRCLING*	840 (708-2.4)			
ALTERNATE	(1208-4.4)		940 (808-4.0) (1308-6.0)	

1. MAX IAS:  
INITIAL : 210KT.
- \* 2. NO CIRCLING  
BEYOND 3NM  
SOUTH OF RWY  
10/28.

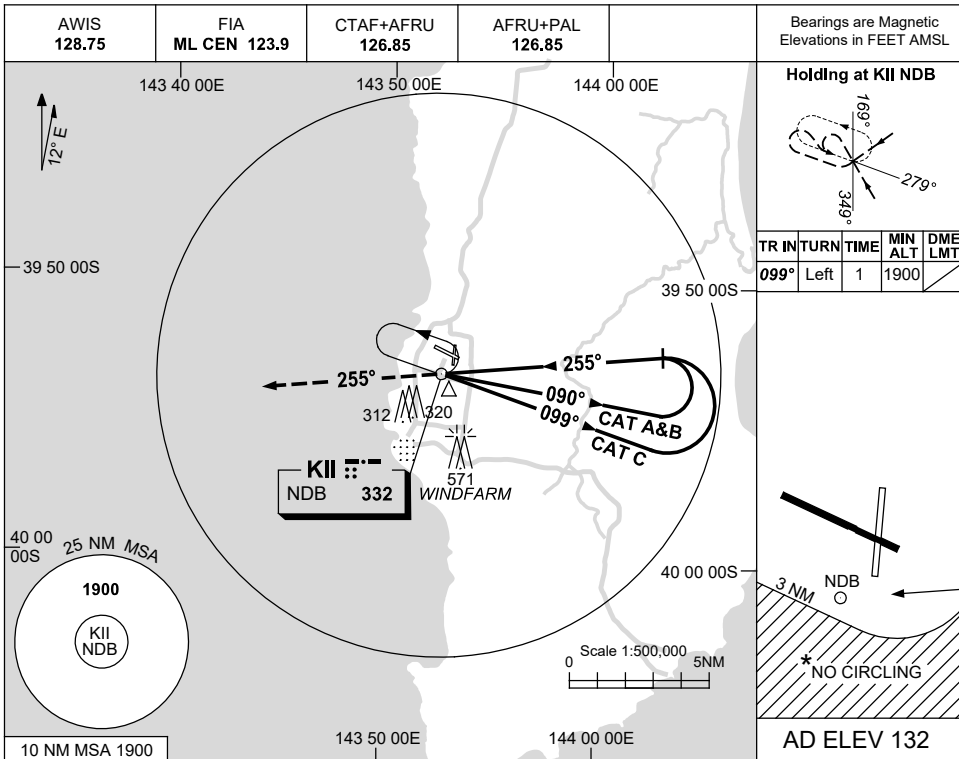
Changes: MSA, HOLDING ALT, IAF ALT, MISSED APCH ALT, COORD FORMAT, THR ELEV, Editorial.

KIINB01-168

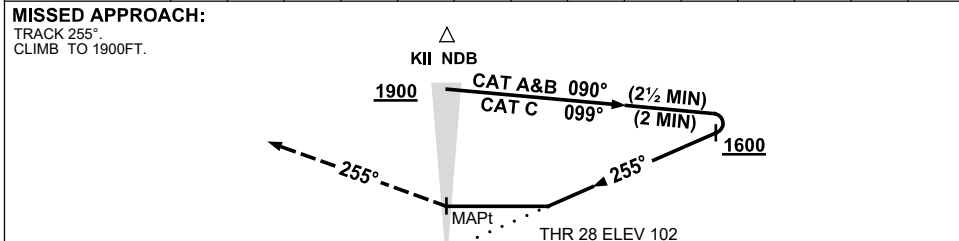
USE QNH

NDB RWY 28  
KING ISLAND, TAS (YKII)

9 SEP 2021



DME DIST	NOT APPLICABLE									
ALT										



**NOTES**

CATEGORY	A	B	C	D
S-I NDB	<b>840</b> (738-4.2)		CIRCLING ONLY	NOT APPLICABLE
CIRCLING *	<b>840</b> (708-2.4)		<b>940</b> (808-4.0)	
ALTERNATE	(1208-4.4)		(1308-6.0)	

1. MAX IAS:  
INITIAL : 210KT.
- \* 2. NO CIRCLING  
BEYOND 3NM  
SOUTH OF RWY  
10/28.

Changes: MSA, HOLDING ALT, IAF ALT, MISSED APCH ALT, COORD FORMAT, THR ELEV, Editorial.

KIINB02-168