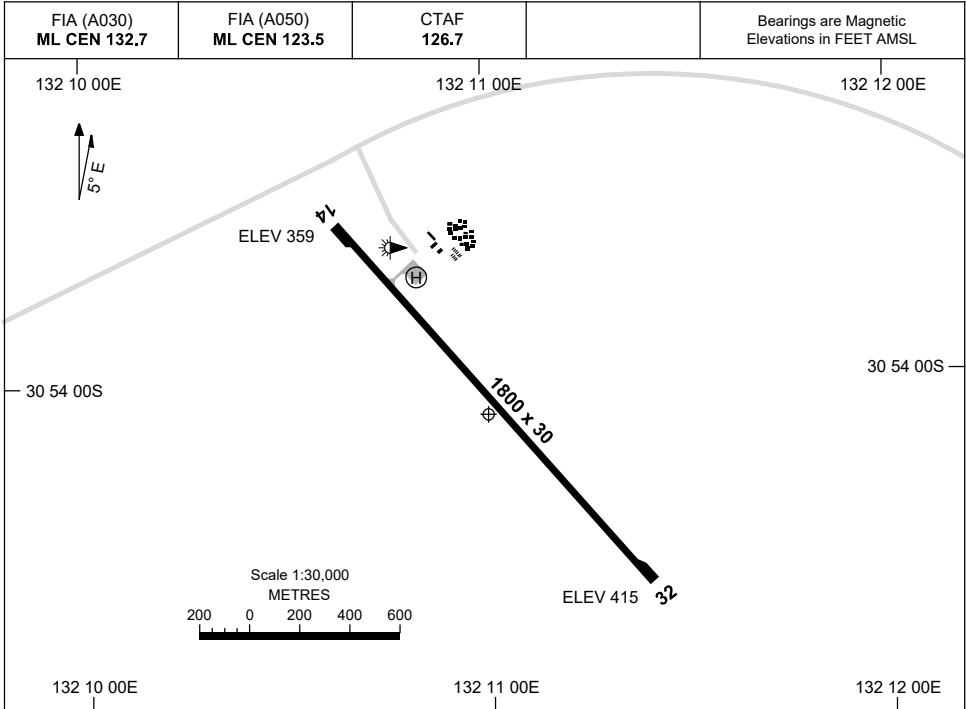


7 SEP 2023

AD ELEV 419  
30 54 04S 132 11 01E

AERODROME CHART  
**JACINTH AMBROSIA, SA (YJAC)**



	<b>AERODROME LIGHTING</b>
<b>RWY</b>	TWY : NIL RL : PTBL (FLARES , EMERG ONLY, 60 MIN PN , CTC ARO 0408 572 620)
<b>14</b> <sup>135</sup>	PTBL
<sup>315</sup> <b>32</b>	PTBL

**NOTES**

Changes: NOTES.

JACAD01-176

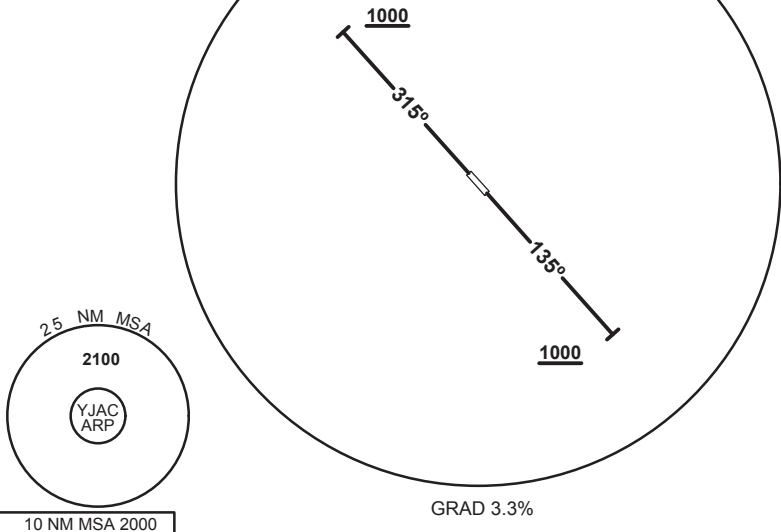
27 FEB 2020

STANDARD INSTRUMENT DEPARTURE  
JACINTH AMBROSIA ONE DEPARTURE  
JACINTH AMBROSIA, SA (YJAC)

FIA (A030) ML CEN 132.7	FIA (A050) ML CEN 123.5	CTAF 126.7		BRG are MAG ELEV in FT AMSL
----------------------------	----------------------------	---------------	--	--------------------------------



**SPEED**  
MAX IAS 250KT  
BELOW 10,000FT



**JACINTH AMBROSIA ONE DEPARTURE**

**RWY 14**

- Track 135°
- AT or ABV 1000FT turn as required
- Continue climb to 2100FT
- Intercept flight plan route

**RWY 32**

- Track 315°
- AT or ABV 1000FT turn as required
- Continue climb to 2100FT
- Intercept flight plan route

**NOTES**

- NIL -

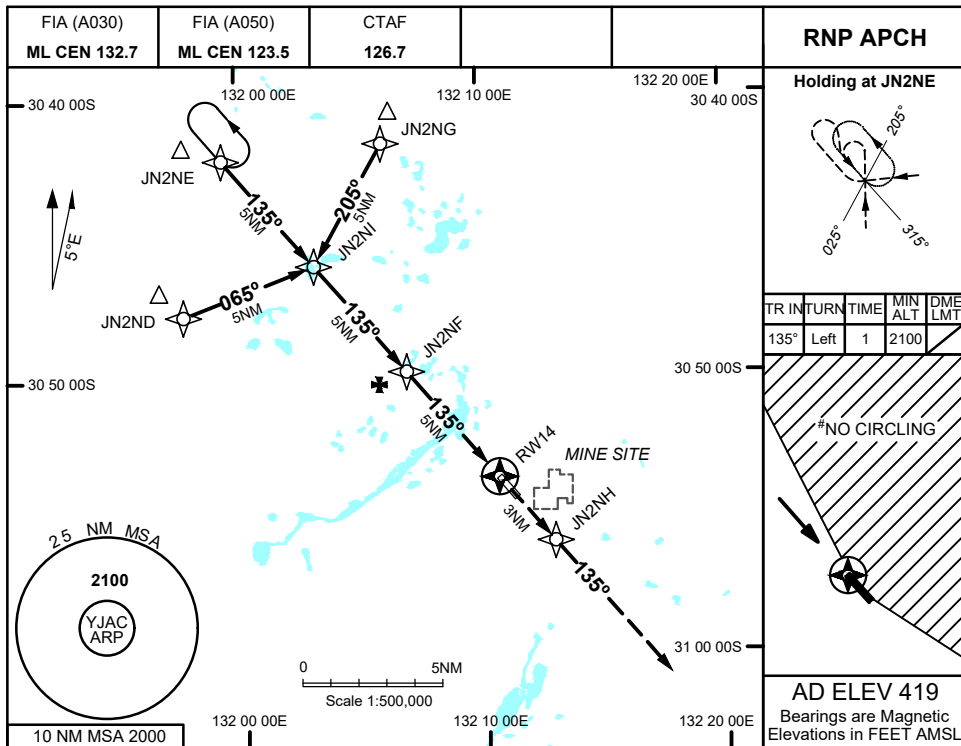
Changes: FROM SUP H127/19

JACDP01-162

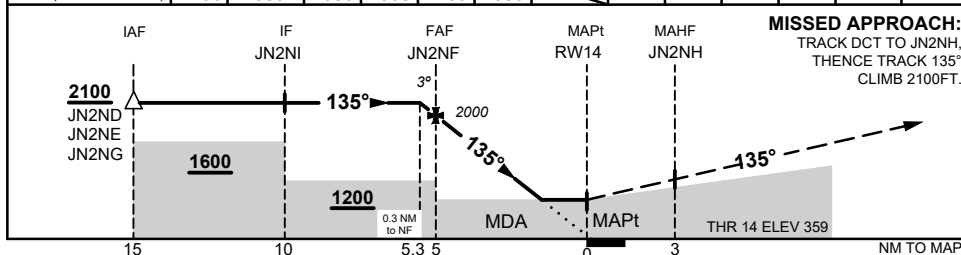


1 DEC 2022

JACINTH AMBROSIA, SA (YJAC)



NM TO NEXT WPT	0.3	JN2NF	4	3	2.4	2.1	RW14							
ALT (3° APCH PATH)	2100	2000	1680	1360	1200	1090								



NOTES

- MAX IAS:  
INITIAL : 210KTS
- NO CIRCLING NORTH OF RWY 14/32

CATEGORY	A	B	C	D
LNAV				NOT APPLICABLE
CIRCLING	1090 (671 - 2.4)		1200 (781 - 4.0)	
ALTERNATE	(1171 - 4.4)		(1281 - 6.0)	

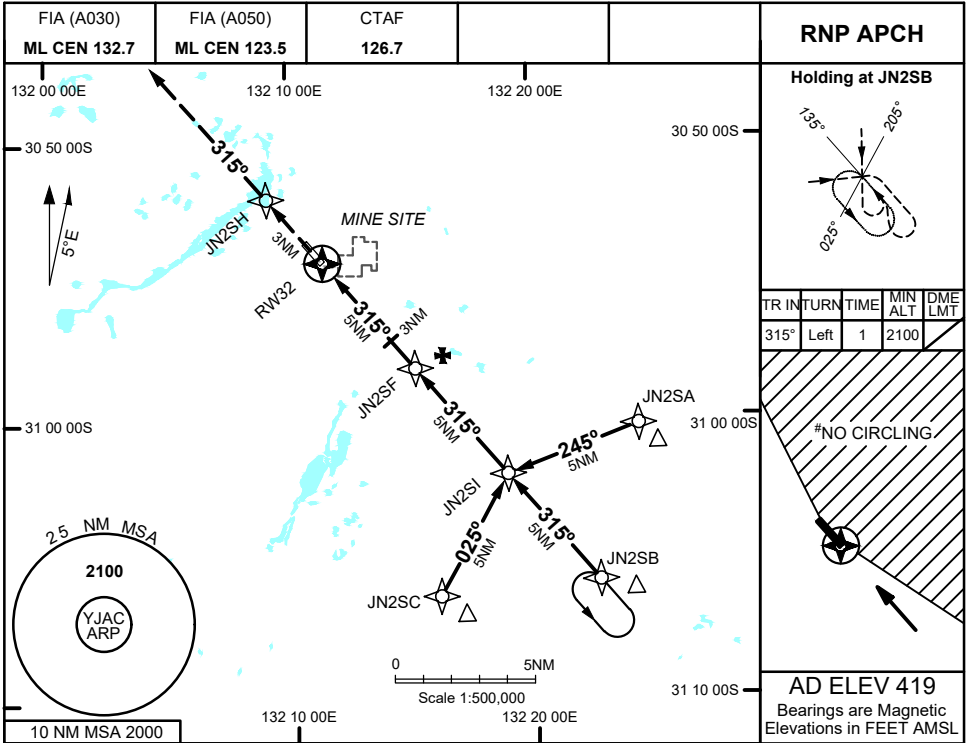
Changes: CHART TITLE, WPT IDENT, Editorial

JACGN01-173

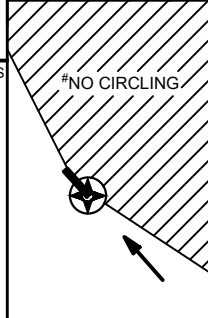


23 MAR 2023

JACINTH AMBROSIA, SA (YJAC)

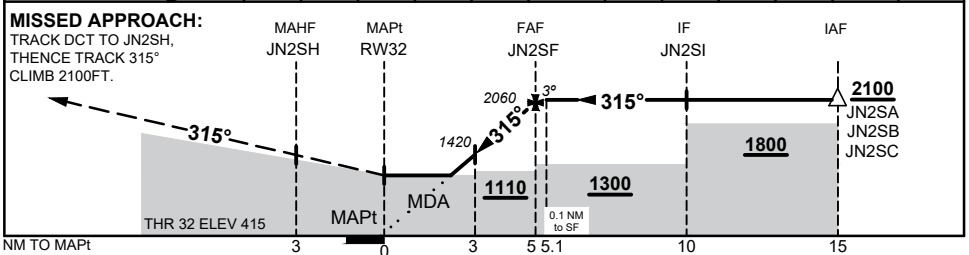


TR	INTURN	TIME	MIN ALT	DME LMT
315°	Left	1	2100	



**AD ELEV 419**  
Bearings are Magnetic Elevations in FEET AMSL

NM TO NEXT WPT	RW32	1.9	2	2.3	3	4	JN2SF	0.1				
ALT (3° APCH PATH)		1090	1100	1200	1420	1740	2060	2100				



**NOTES**

- MAX IAS: INITIAL : 210KTS
- NO CIRCLING NORTH OF RWY 14/32

CATEGORY	A	B	C	D
LNAV				NOT APPLICABLE
CIRCLING#	1090 (671 - 2.4)		1200 (781 - 4.0)	
ALTERNATE	(1171 - 4.4)		(1281 - 6.0)	

Changes: WPT IDENT JN2SI

JACGN02-174

