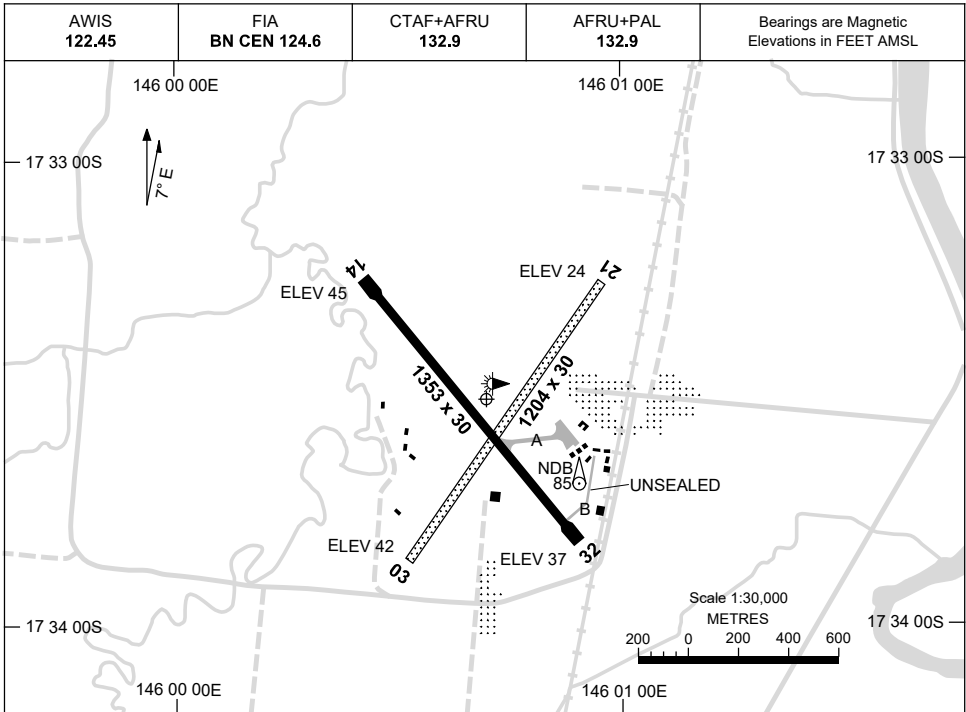


7 SEP 2023

AD ELEV 46  
17 33 31S 146 00 42E

AERODROME CHART  
**INNISFAIL/MUNDOO, QLD (YIFL)**



	<b>AERODROME LIGHTING</b>	
<b>RWY</b>	TAXIWAY : BLUE EDGE TWY A RL : AFRU+PAL 132.9 , SDBY (15 SEC)	
<b>14</b> <sup>134</sup>	LIRL	
<sup>314</sup> <b>32</b>	LIRL	
<b>03</b> <sup>028</sup>	NIL	
<sup>208</sup> <b>21</b>	NIL	

**NOTES**

1. FIA FREQ 124.6 AVBL IN CIRCUIT AREA.

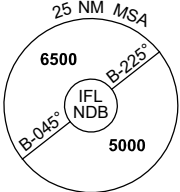
Changes: RWY 03/21 LEN, TWY A AND B, NOTES, Editorial.

IFLAD01-176

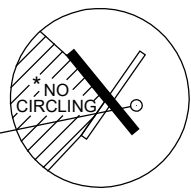
# GNSS ARRIVAL PROCEDURES INNISFAIL/MUNDOO, QLD (YIFL)

23 MAR 2023

AWIS 122.45	FIA BN CEN 124.6	CTAF+AFRU 132.9	AFRU+PAL 132.9		Bearings are Magnetic Elevations in FEET AMSL
----------------	---------------------	--------------------	-------------------	--	--



**REFERENCE WAYPOINT IFL NDB**

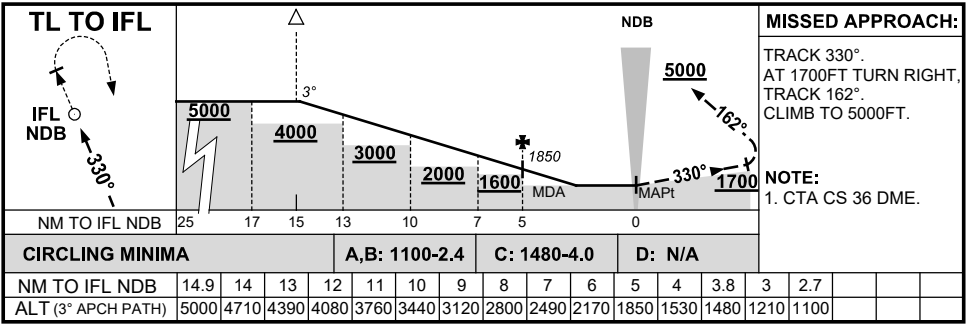
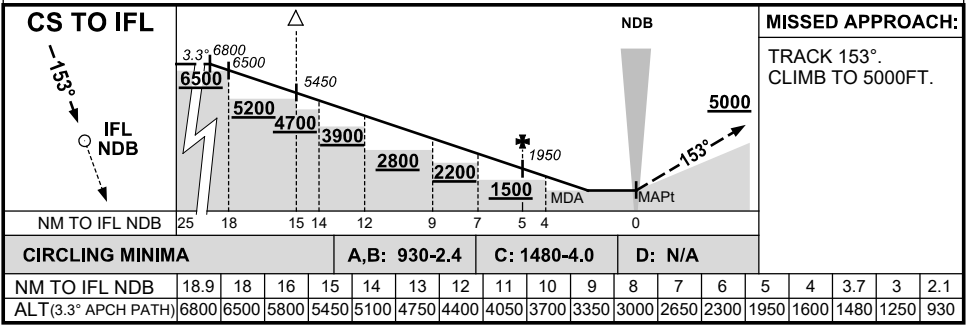


IFL NDB 212

\* NO CIRCLING IN SECTOR WEST OF RWY 14 & RWY 03.

10 NM MSA 6500

AD ELEV 46



Changes: CS TO IFL REVISED PROC, TL TO IFL NOTE, Editorial.

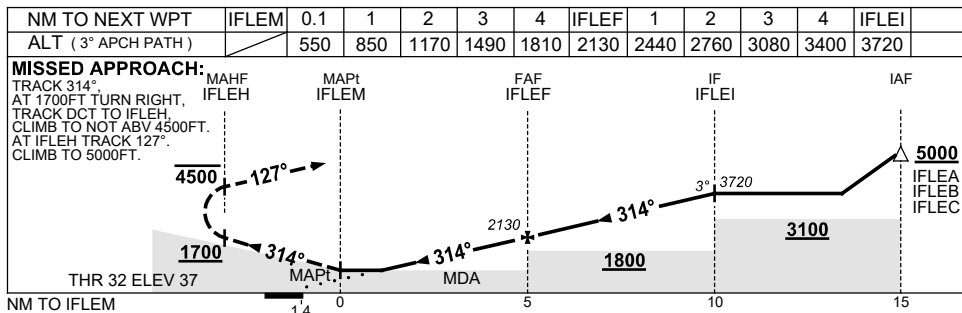
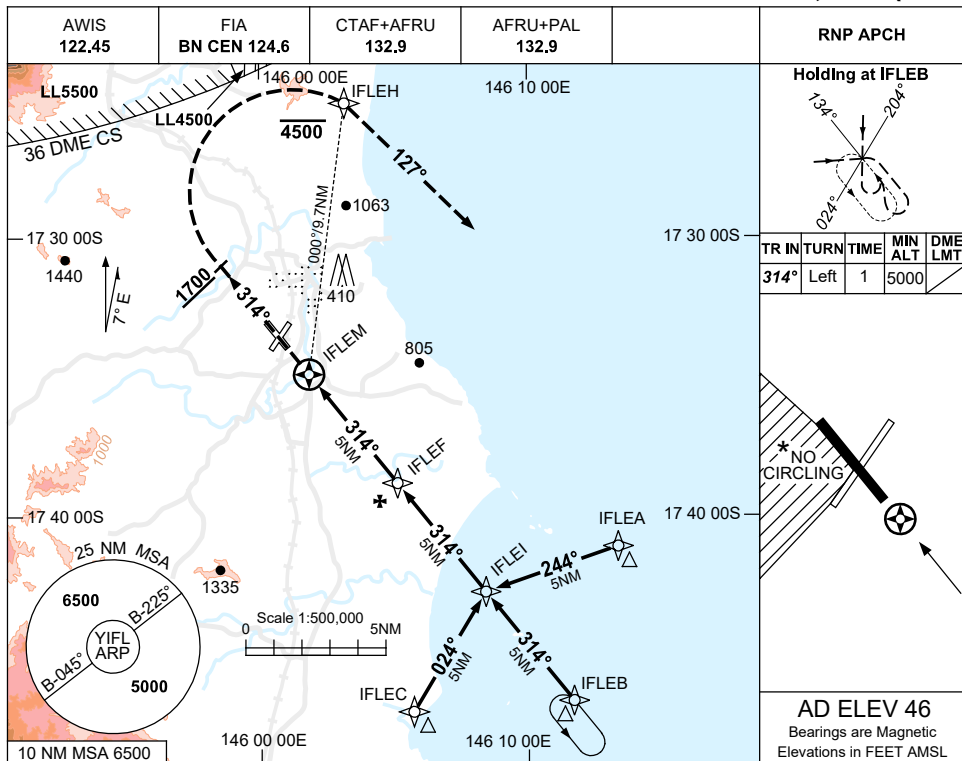
IFLDG01-174

USE QNH

RNP RWY 32

7 SEP 2023

INNISFAIL/MUNDOO, QLD (YIFL)



**NOTES**

CATEGORY	A	B	C	D
LNAV	550 (513-2.9)			<b>NOT APPLICABLE</b>
CIRCLING*	930 (884-2.4)	1480 (1434-4.0)		
ALTERNATE	(1384-4.4)		(1934-6.0)	

1. MAX IAS: INITIAL : 210KT.
- \* 2. NO CIRCLING IN SECTOR WEST OF RWY 14 & RWY 03.
3. COLOUR: SEE SPEC NOTICES.

Changes: MISSED APPROACH INSTRUCTIONS.

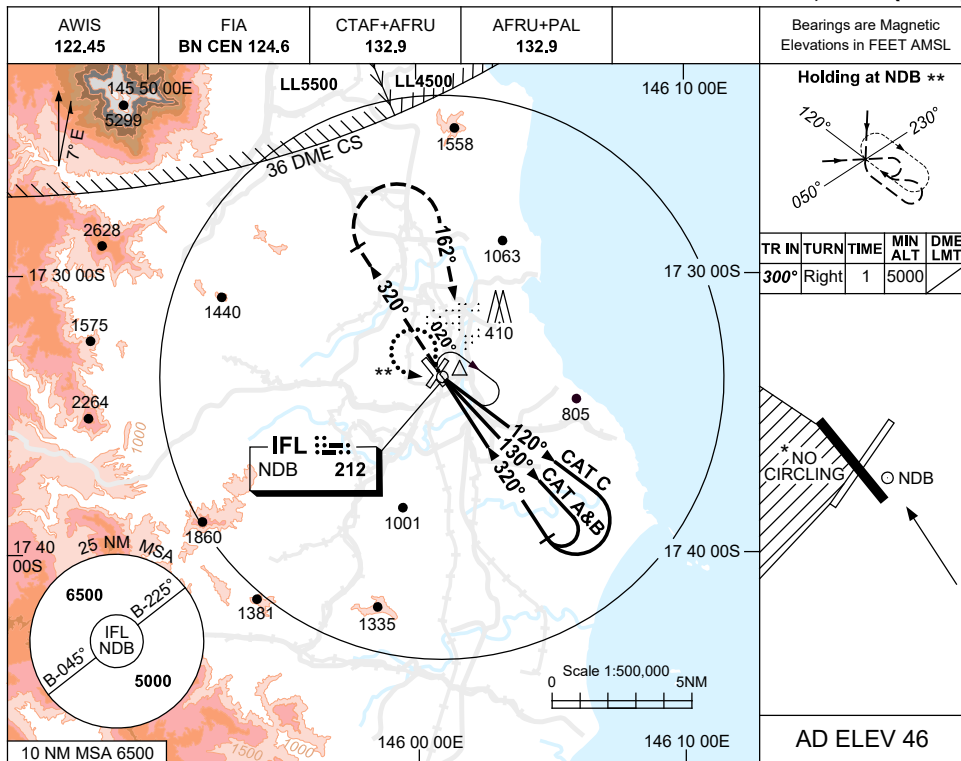
IFLGN01-176

USE QNH

NDB-A

7 SEP 2023

**INNISFAIL/MUNDGOO, QLD (YIFL)**



DME DIST	NOT APPLICABLE				
ALT					

**MISSED APPROACH:**  
 TRACK 320°  
 AT 1700FT TURN RIGHT,  
 TRACK 162°.  
 CLIMB TO 5000FT.

**NOTES**

1. MAX IAS:  
INITIAL : 210KT.
- \*2. NO CIRCLING IN SECTOR WEST OF RWY 14 & RWY 03.
3. MISS APCH MAY PENETRATE CS CTA.
4. PROC TURN(80°/260°)  
\*\* RQ TO JOIN PROC FROM HOLD
5. COLOUR: SEE SPEC NOTICES.

CATEGORY	A	B	C	D
				NOT APPLICABLE
CIRCLING *	<b>930</b> (884-2.4)		<b>1480</b> (1434-4.0)	
ALTERNATE	(1384-4.4)		(1934-6.0)	

Changes: MISSED APPROACH INSTRUCTIONS, Editorial.

IFLN01-176