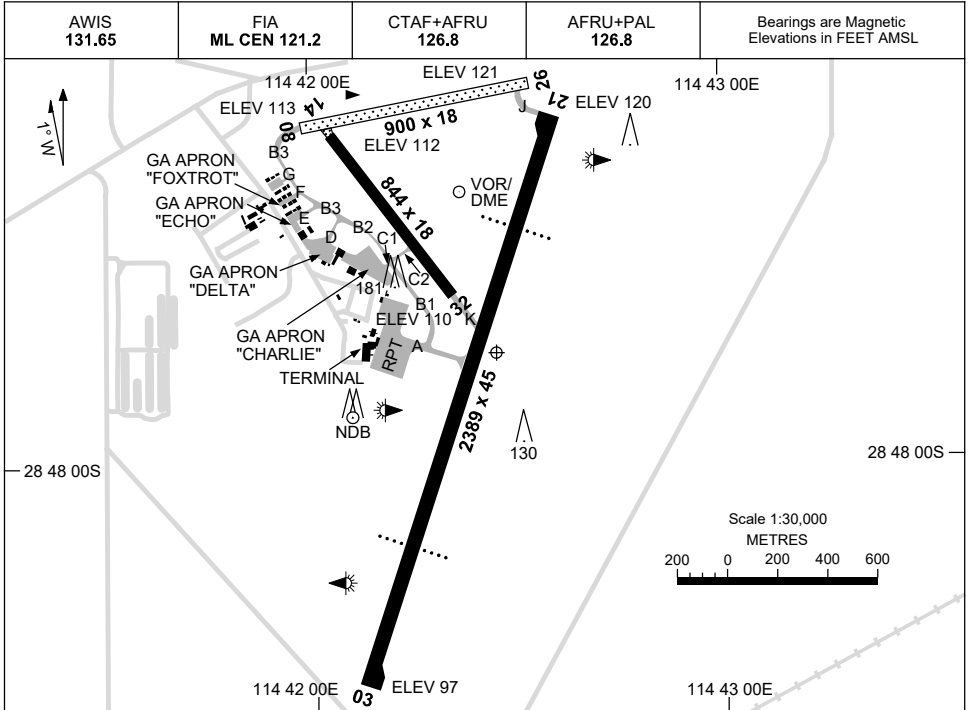


15 JUN 2023

AD ELEV 121
28 47 46S 114 42 27E

AERODROME CHART
GERALDTON, WA (YGEL)



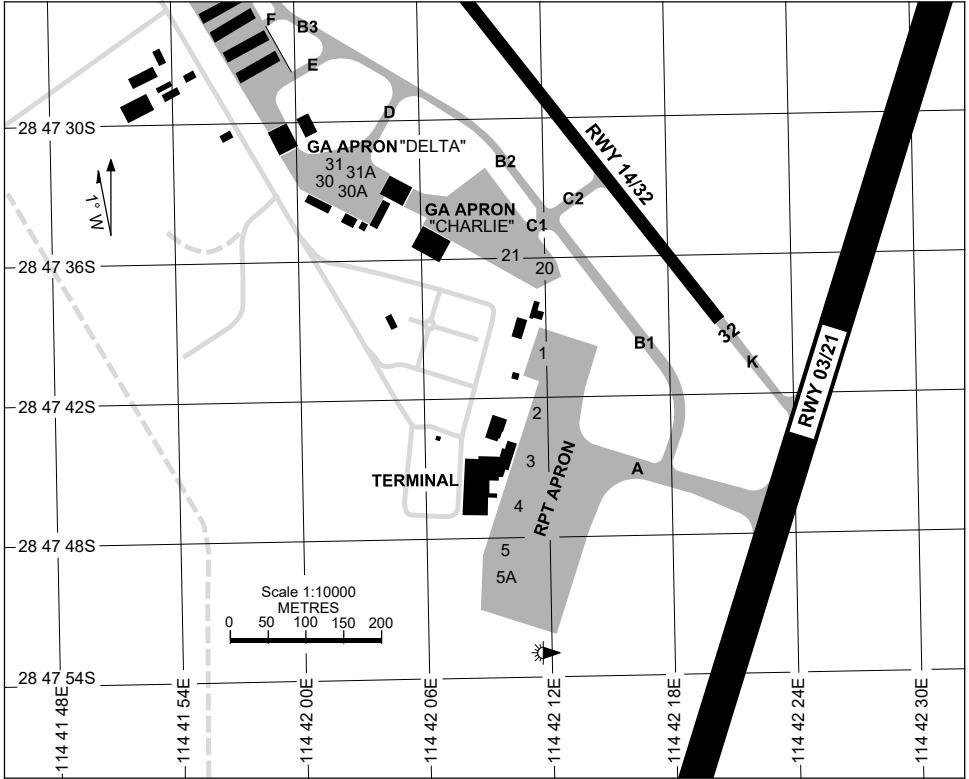
AERODROME INFORMATION	
RWY	TAXIWAY : BLUE EDGE (TWY A) ; GREEN CL REFLECTIVE MARKERS (TWY B1, B2, B3) RL : AFRU+PAL 126.8 , SDBY (30 SEC).
03 ⁰¹⁹	PAPI 3.0° 65FT LIRL
¹⁹⁹ 21	PAPI 3.0° 65FT LIRL
08 ⁰⁸¹	NIL
²⁶¹ 26	NIL
14 ¹⁴⁴	NIL
³²⁴ 32	NIL
NOTES	

Changes: TAXIWAYS.

GELAD01-175

15 JUN 2023

APRON CHART
GERALDTON, WA (YGEL)



PARKING POSITION INFORMATION

STAND	CO-ORDINATES		ELEV (ft)	CAPACITY	HYDRANT FUEL
1	28 47 40.14S	114 42 11.87E	109	A320/B738	NIL
2	28 47 42.70S	114 42 11.52E	108	A320/B738	NIL
3	28 47 44.68S	114 42 11.14E	108	A320/B738	NIL
4	28 47 46.65S	114 42 10.52E	107	A320/B738	NIL
5	28 47 48.60S	114 42 09.81E	107	A320/B738	NIL
5A	28 47 49.65S	114 42 09.89E	107	A333/B789	NIL
20	28 47 36.50S	114 42 12.02E	111	E120	NIL
21	28 47 35.94S	114 42 10.39E	110	EC25	NIL
30	28 47 32.51S	114 42 01.77E	111	B190/PC24	NIL
30A	28 47 32.77S	114 42 02.29E	110	B190/PC24	NIL
31	28 47 31.92S	114 42 02.14E	111	B190/PC24	NIL
31A	28 47 32.17S	114 42 02.66E	111	B190/PC24	NIL

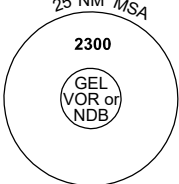
Changes: TAXIWAY.

GELAP01-175

DME or GNSS ARRIVAL PROCEDURES GERALDTON, WA (YGEL)

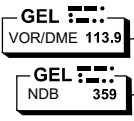
27 FEB 2020

AWIS 131.65	FIA ML CEN 121.2	CTAF+AFRU 126.8	AFRU+PAL 126.8		Bearings are Magnetic Elevations in FEET AMSL
----------------	---------------------	--------------------	-------------------	--	--

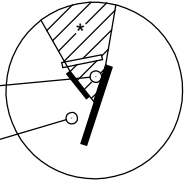


25 NM MSA
2300
GEL VOR or NDB

**DME USING GEL DME
REFERENCE WAYPOINT GEL VOR**



GEL VOR/DME 113.9
GEL NDB 359

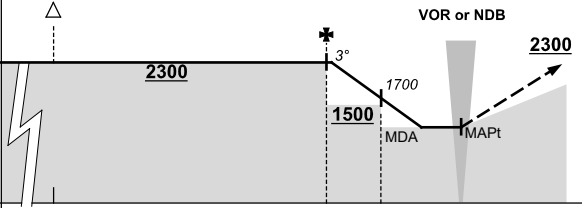


10 NM MSA 2200

* NO CIRCLING IN SECTOR NORTH OF RWY 14 & RWY 21.

AD ELEV 121

ALL TRACKS TO GEL VOR or NDB



VOR or NDB
3°
1500 MDA
1700 MAPt
2300

MISSED APPROACH:
CLIMB ON TRACK TO 2300FT.

NM TO GEL VOR	25	15																		
CIRCLING MINIMA	A,B: 1190-2.4					C: 1290-4.0					D: 1420-5.0									
NM TO GEL VOR	4.9	4	3	2	1.4															
ALT (3° APCH PATH)	2300	2010	1700	1380	1190															

Changes: Editorial.

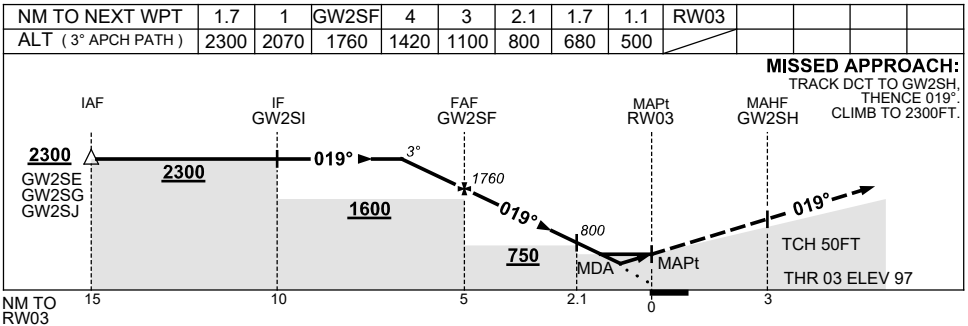
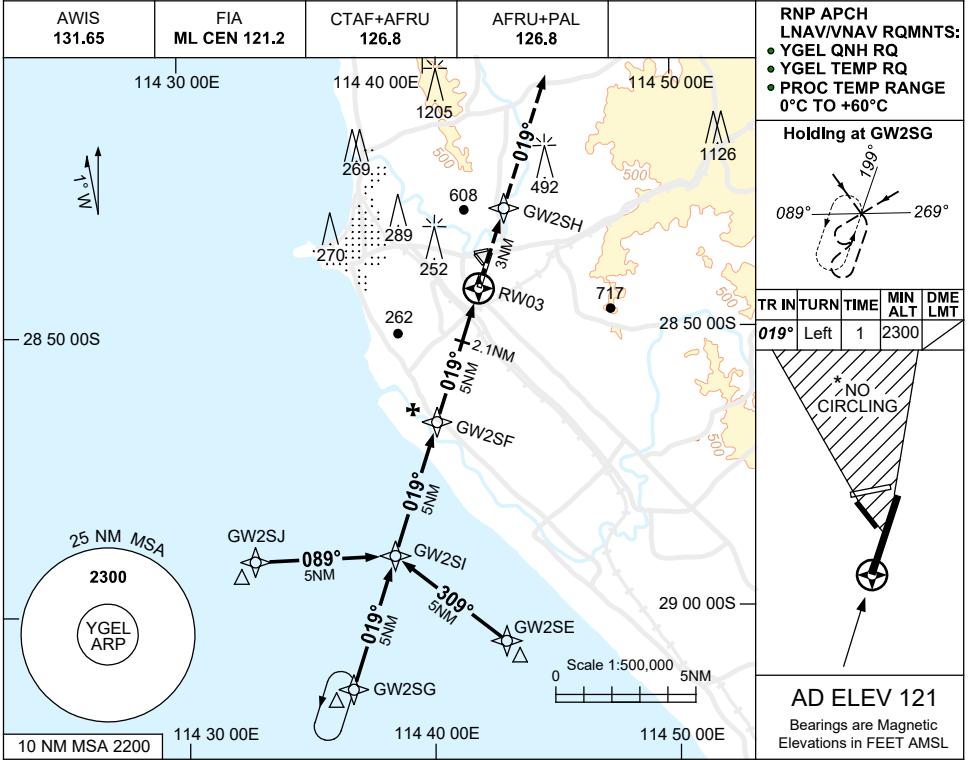


USE QNH

RNP RWY 03

7 SEP 2023

GERALDTON, WA (YGEL)



NOTES

CATEGORY	A	B	C	D
LNAV/VNAV	500 (403-2.3)			
LNAV	680 (583-3.3)			
CIRCLING *	1190(1069-2.4)	1290(1169-4.0)	1420(1299-5.0)	
ALTERNATE	(1569-4.4)		(1669-6.0)	(1799-7.0)

1. MAX IAS:
INITIAL : 210KT.
- * 2. NO CIRCLING IN
SECTOR NORTH OF
RWY 14 & RWY 21.
3. COLOUR: SEE
SPEC NOTICES.

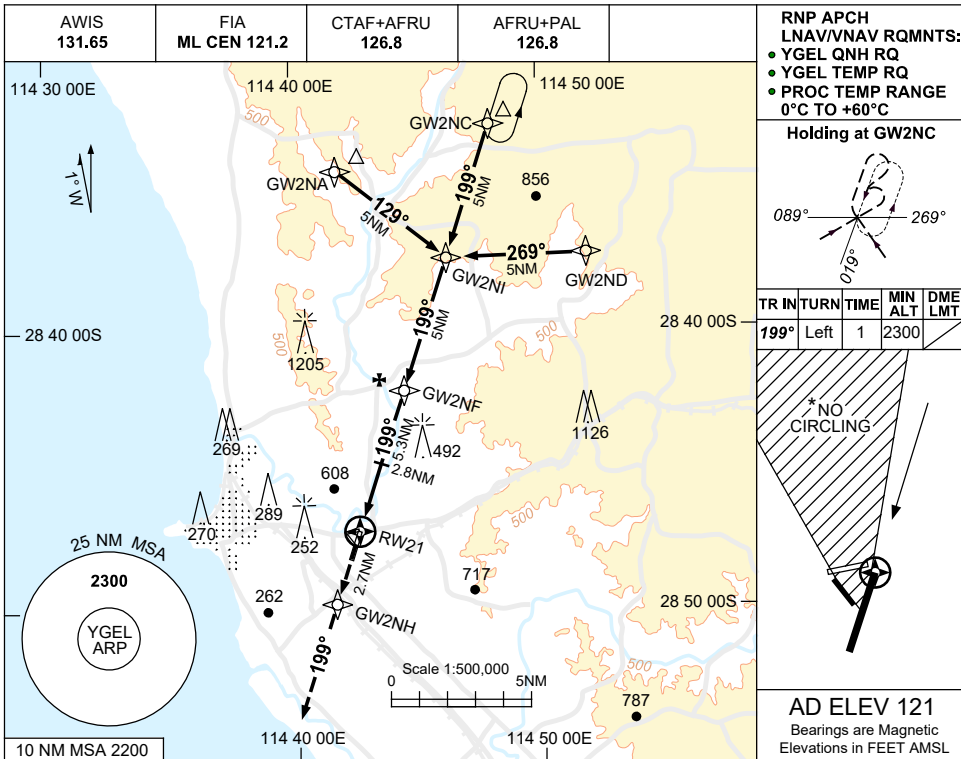
Changes: CHART TITLE, PBN SPECIFICATION BOX, Editorial.

GELGN01-176

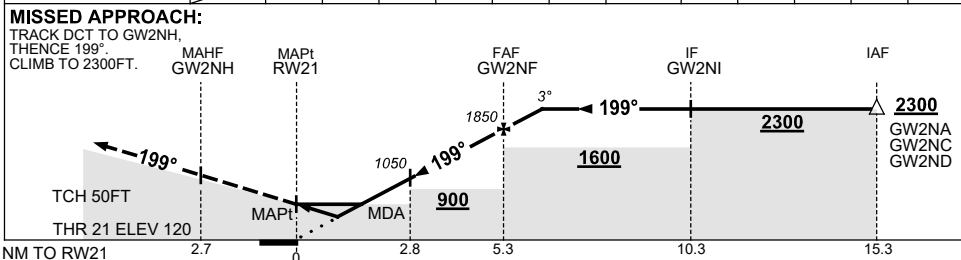
USE QNH

RNP RWY 21
GERALDTON, WA (YGEL)

7 SEP 2023



NM TO NEXT WPT	RW21	1.2	1.8	2	2.8	3	4	GW2NF	1	1.5			
ALT (3° APCH PATH)		560	750	810	1050	1130	1440	1850	2160	2300			



CATEGORY	A	B	C	D
LNAV/VNAV	560 (440-2.5)			
LNAV	750 (629-3.6)			
CIRCLING *	1190 (1069-2.4)		1290 (1169-4.0)	
ALTERNATE	(1569-4.4)		1420 (1299-5.0)	
			(1799-7.0)	

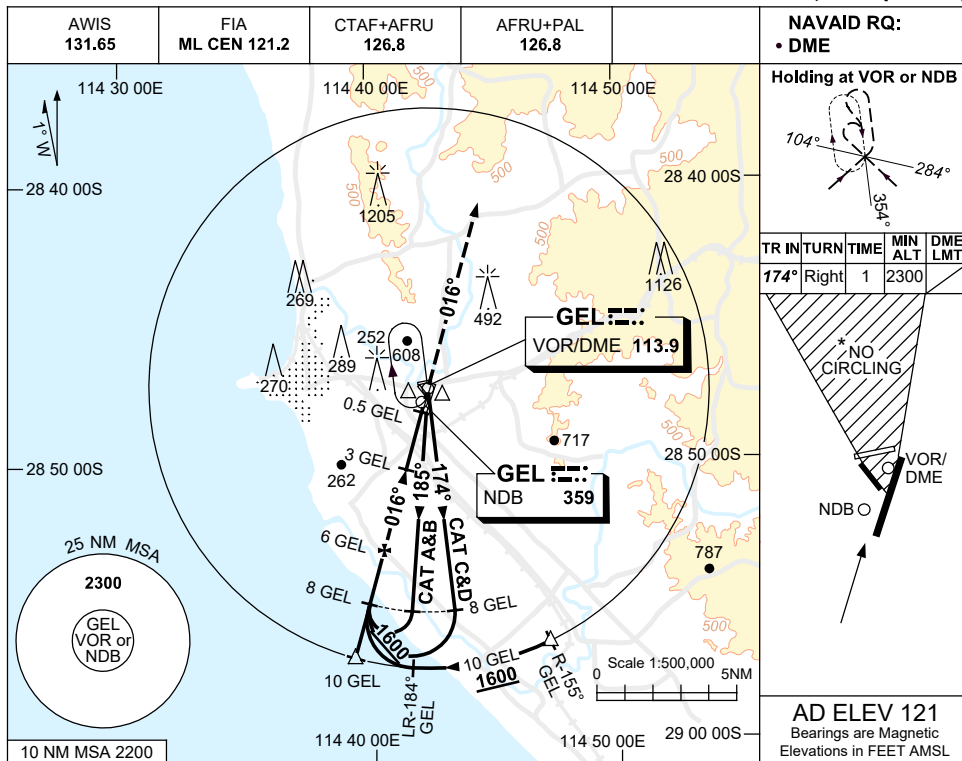
- NOTES**
1. MAX IAS:
INITIAL : 210KT.
 - * 2. NO CIRCLING IN
SECTOR NORTH OF
RWY 14 & RWY 21.
 3. COLOUR: SEE
SPEC NOTICES.

Changes: CHART TITLE, PBN SPECIFICATION BOX, Editorial. GELGN02-176

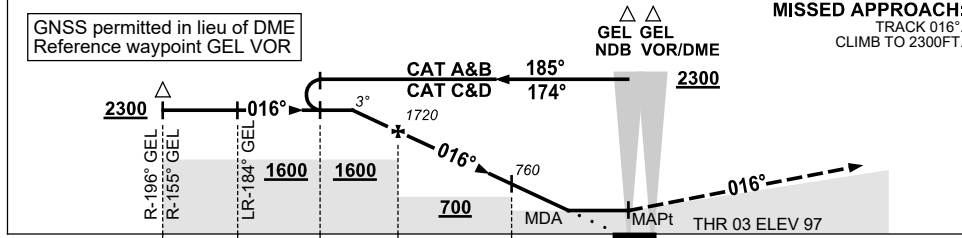
USE QNH

NDB-Z or VOR-Z RWY 03
GERALDTON, WA (YGEL)

30 NOV 2023



DIST BY DME	7.8	7	6	5	4	3	2.9						
ALT (3° APCH PATH)	2300	2030	1720	1400	1080	760	730						



NOTES

CATEGORY	A	B	C	D
S-I VOR/DME or NDB/DME	730 (633-3.6)			
CIRCLING*	1190 (1069-2.4)	1290 (1169-4.0)	1420 (1299-5.0)	
ALTERNATE	(1569-4.4)	(1669-6.0)	(1799-7.0)	

- MAX IAS:
INITIAL : 210KT.
- NO CIRCLING IN SECTOR NORTH OF RWY 14 & RWY 21.
- CLOUR: SEE SPEC NOTICES.

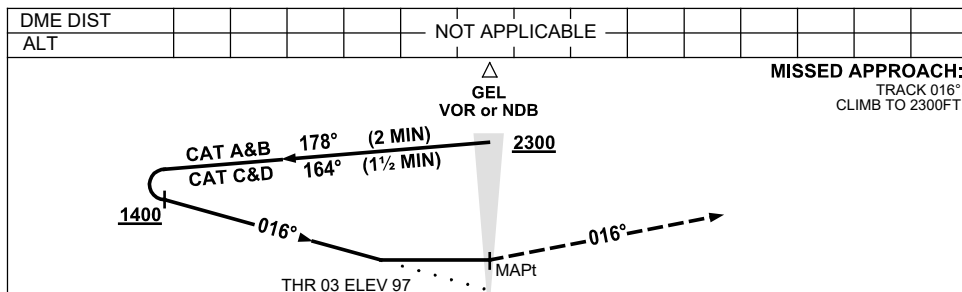
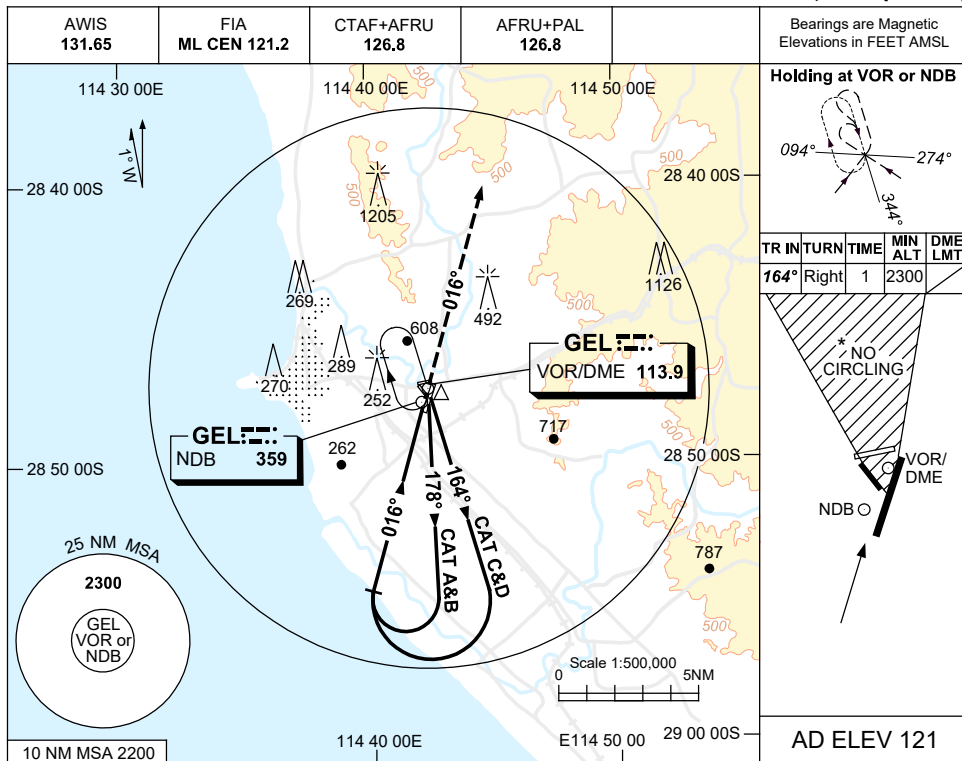
Changes: DIST-ALT TABLE, 6NM TO 3NM SEGMENT MNM ALT, NEW LOGO.

GELNB01-177

USE QNH

NDB-Y or VOR-Y RWY 03
GERALDTON, WA (YGEL)

1 DEC 2022



CATEGORY	A	B	C	D
S-I VORorNDB	800 (703-4.0)			
CIRCLING *	1190 (1069-2.4)	1290 (1169-4.0)	1420 (1299-5.0)	
ALTERNATE	(1569-4.4)	(1669-6.0)	(1799-7.0)	

- NOTES**
1. MAX IAS: INITIAL ; 210KT.
 - * 2. NO CIRCLING IN SECTOR NORTH OF RWY 14 & RWY 21.
 3. COLOUR: SEE SPEC NOTICES.

Changes: THR ELEV, Editorial.

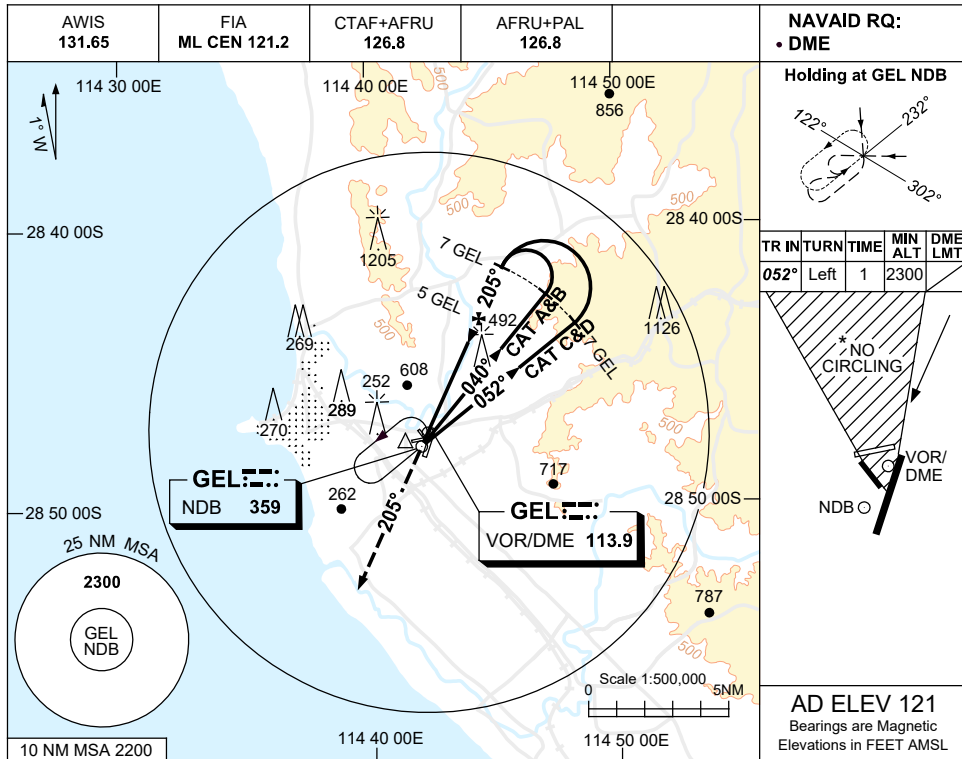
GELNB02-173

USE QNH

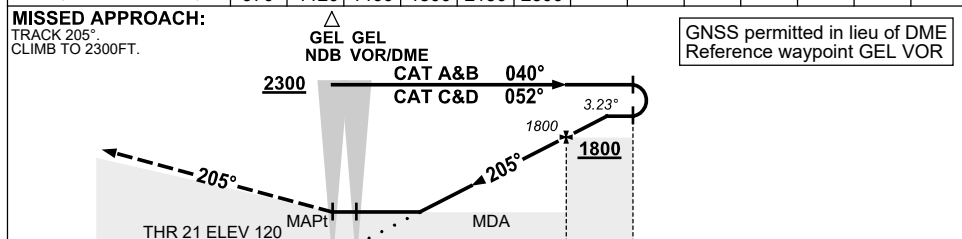
NDB RWY 21

1 DEC 2022

GERALDTON, WA (YGEL)



DIST BY DME	2.6	3	4	5	6	6.5							
ALT (3.23° APCH PATH)	970	1120	1460	1800	2150	2300							



NM BY DME

	0.5	0		5	7
--	-----	---	--	---	---

NOTES

1. MAX IAS:
INITIAL : 210KT.
- * 2. NO CIRCLING IN SECTOR NORTH OF RWY 14 & RWY 21.
3. APCH PATH ANGLE DOES NOT COINCIDE WITH PAPI ON GLIDE SLOPE INDICATION.
4. COLOUR: SEE SPEC NOTICES.

CATEGORY	A	B	C	D
S-I NDB/DME	970 (849-4.5)			
CIRCLING *	1190 (1069-2.4)	1290 (1169-4.0)	1420 (1299-5.0)	
ALTERNATE	(1569-4.4)	(1669-6.0)	(1799-7.0)	

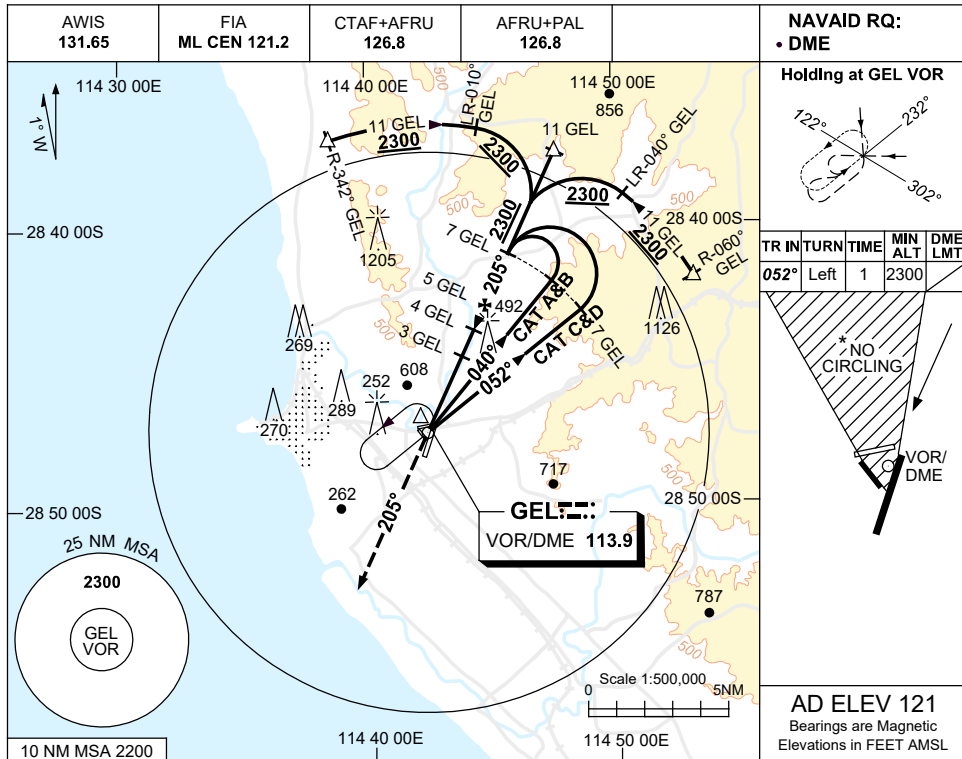
Changes: NEW CHART.

GELNB03-173

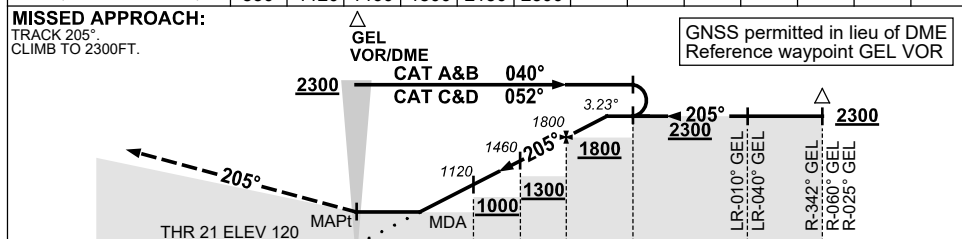
USE QNH

VOR RWY 21
GERALDTON, WA (YGEL)

1 DEC 2022



DIST BY DME	2.2	3	4	5	6	6.5					
ALT (3.23° APCH PATH)	830	1120	1460	1800	2150	2300					



NM BY DME

NOTES

1. MAX IAS: INITIAL : 210KT.
- * 2. NO CIRCLING IN SECTOR NORTH OF RWY 14 & RWY 21.
3. APCH PATH ANGLE DOES NOT COINCIDE WITH PAPI ON GLIDE SLOPE INDICATION.
4. COLOUR: SEE SPEC NOTICES.

CATEGORY	A	B	C	D
S-I VOR/DME	830 (709-3.8)			
CIRCLING *	1190 (1069-2.4)	1290 (1169-4.0)	1420 (1299-5.0)	
ALTERNATE	(1569-4.4)	(1669-6.0)	(1799-7.0)	

Changes: NEW CHART. GELV001-173