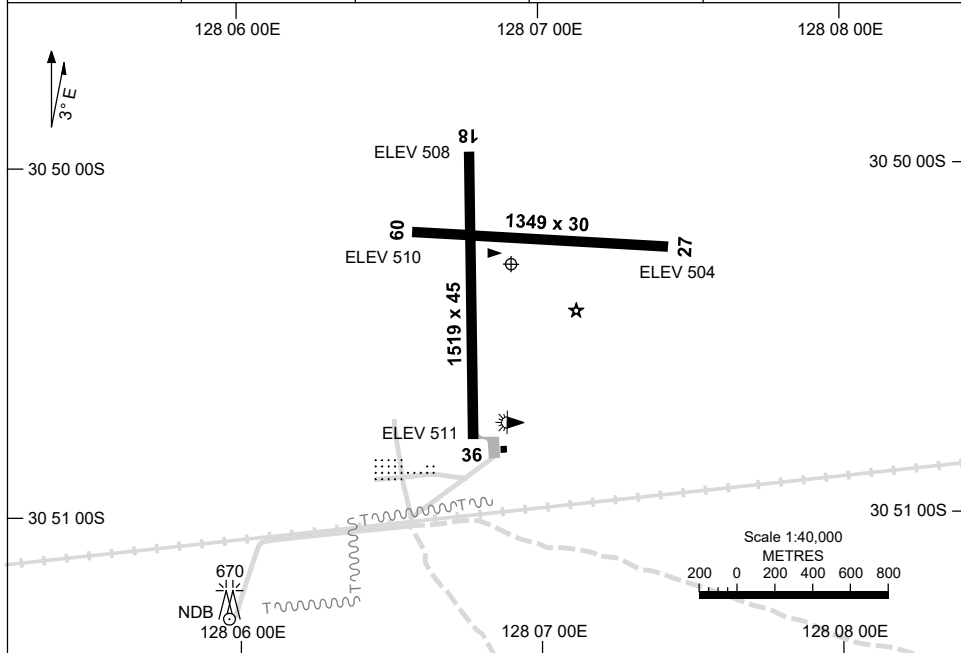


30 NOV 2023

AD ELEV 511
30 50 17S 128 06 54E

AERODROME CHART
FORREST, WA (YFRT)

AWIS 128.65	FIA ML CEN 134.2	CTAF/UNICOM 126.7	PAL 119.6	Bearings are Magnetic Elevations in FEET AMSL
----------------	---------------------	----------------------	--------------	--



RWY	AERODROME LIGHTING	
		ABN : FLG W 10 SEC MAN O/R
	RL : PAL 119.6 , SDBY (15 SEC)	
18 ¹⁷⁶	LIRL	
356 36	LIRL	
09 ⁰⁹⁰	PTBL	
270 27	PTBL	

NOTES

1. AWIS REQUIRES 1 SEC TX TO ACTIVATE.
2. FIA FREQ 134.2 AVBL 11,000FT.
3. RWY 09/27 PTBL LIGHTING IS FOR EMERG ONLY. 90 MIN PN.

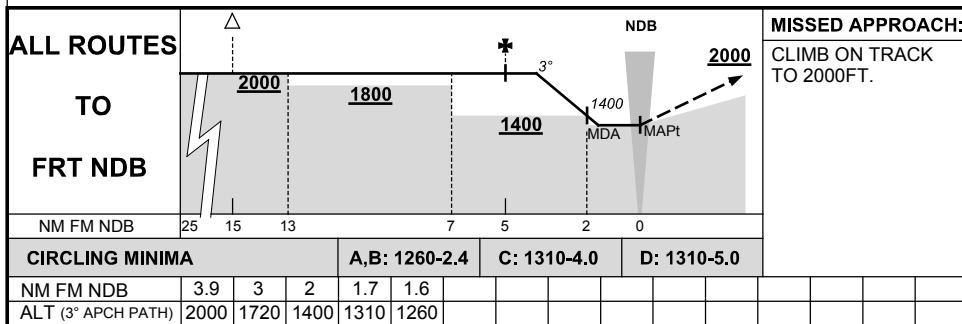
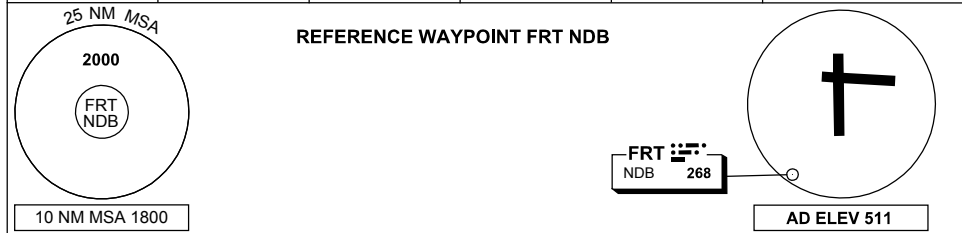
Changes: THR ELEV.

FRTAD01-177

GNSS ARRIVAL PROCEDURES FORREST, WA (YFRT)

25 MAY 2017

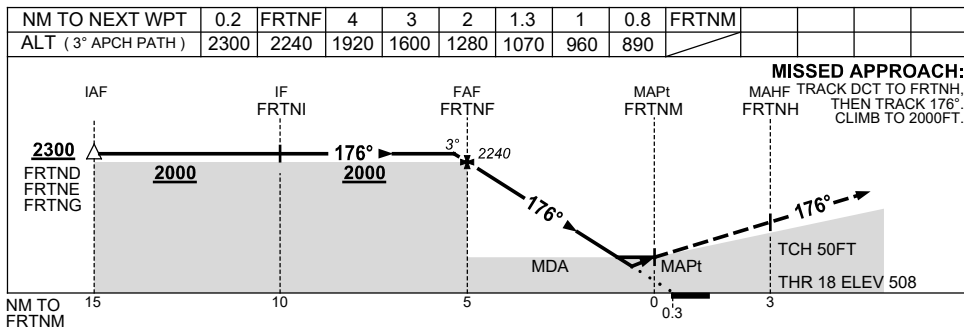
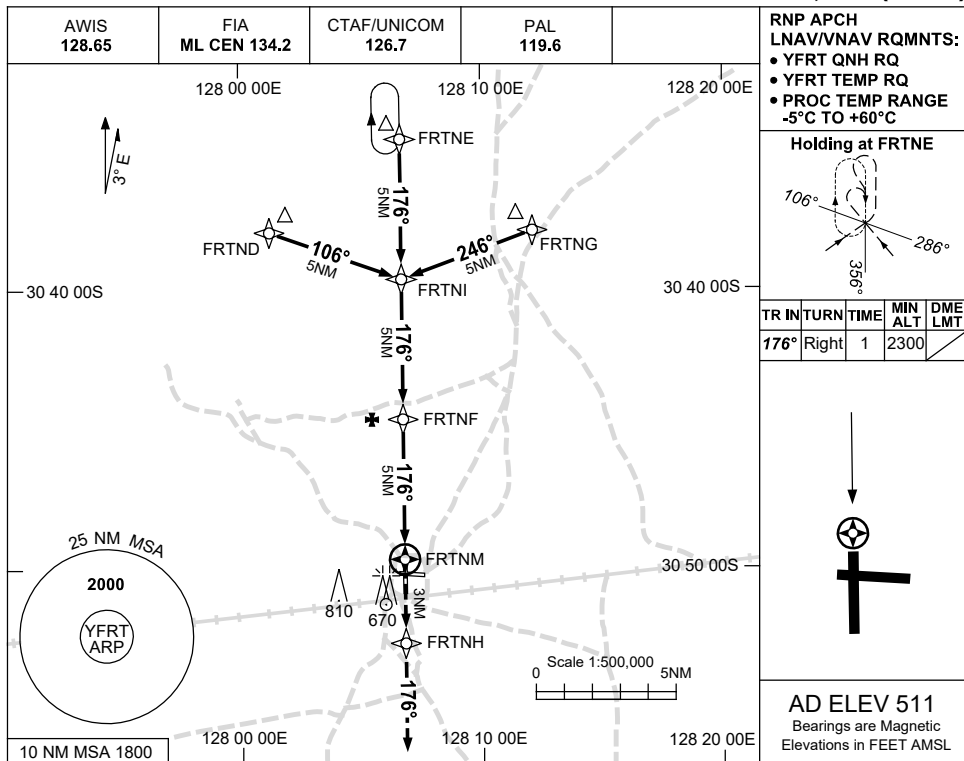
AWIS 128.65	FIA ML CEN 134.2	CTAF/UNICOM 126.7	PAL 119.6		Bearings are Magnetic Elevations in FEET AMSL
----------------	---------------------	----------------------	--------------	--	--



USE QNH

RNP RWY 18
FORREST, WA (YFRT)

30 NOV 2023



MISSED APPROACH:
MAHF TRACK DCT TO FRTNH,
THEN TRACK 176°.
CLIMB TO 2000FT.

NOTES

CATEGORY	A	B	C	D
LNAV/VNAV	890 (382-2.1)			
LNAV	1070 (559-3.2)			
CIRCLING	1210 (699-2.4)	1310 (799-4.0)	1310 (799-5.0)	
ALTERNATE	(1199-4.4)	(1299-6.0)	(1299-7.0)	

1. MAX IAS:
INITIAL : 210KT.

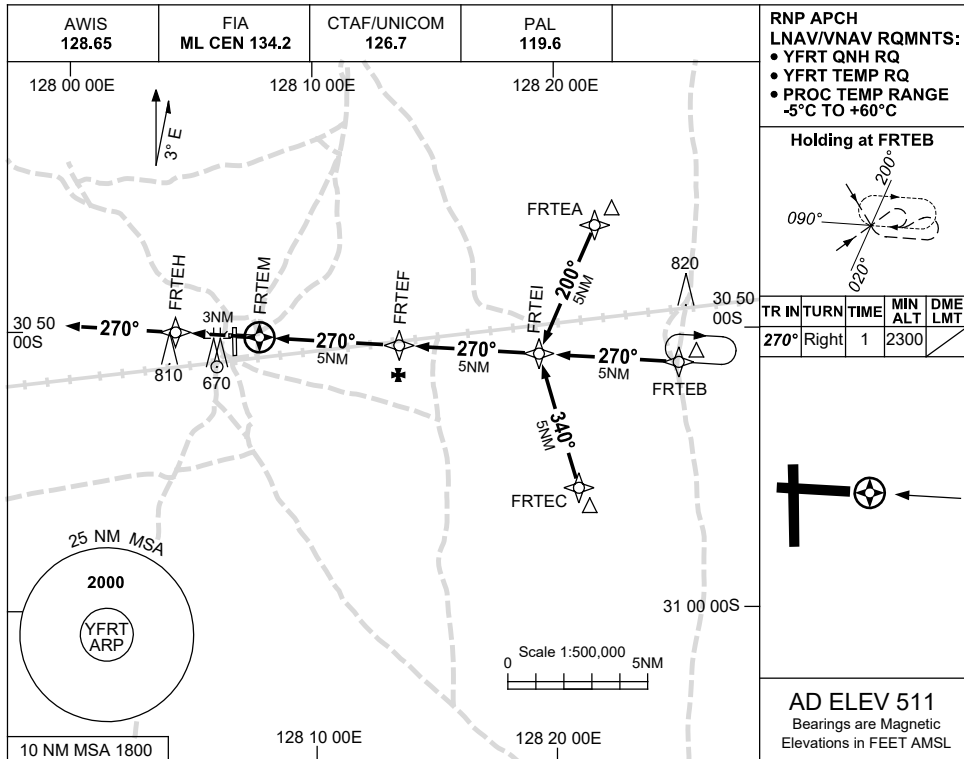
Changes: LNAV/VNAV MINIMA, THR ELEV.

FRTGN01-177

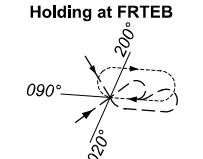
USE QNH

RNP RWY 27
FORREST, WA (YFRT)

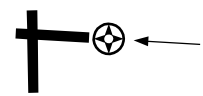
30 NOV 2023



RNP APCH
LNAV/VNAV RQMNTS:
• YFRT QNH RQ
• YFRT TEMP RQ
• PROC TEMP RANGE
-5°C TO +60°C

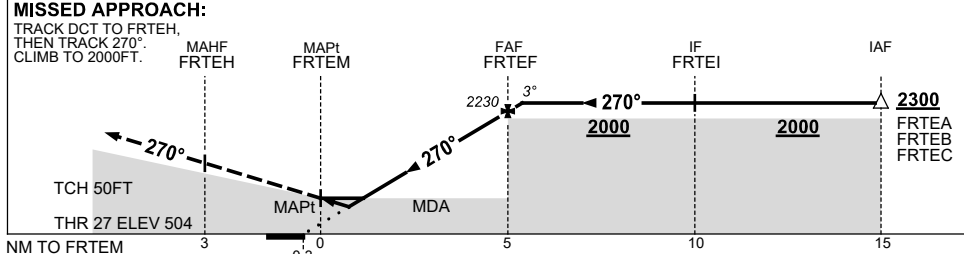


TR	INTURN	TIME	MIN ALT	DME LMT
270°	Right	1	2300	



AD ELEV 511
Bearings are Magnetic
Elevations in FEET AMSL

NM TO NEXT WPT	FRTEM	0.8	1	1.4	2	3	4	FRTEF	0.2			
ALT (3° APCH PATH)		890	960	1070	1280	1600	1910	2230	2300			



NOTES

CATEGORY	A	B	C	D
LNAV/VNAV	890 (386-2.2)			
LNAV	1070 (559-3.2)			
CIRCLING	1210 (699-2.4)	1310 (799-4.0)	1310 (799-5.0)	
ALTERNATE	(1199-4.4)	(1299-6.0)	(1299-7.0)	

1. MAX IAS:
INITIAL : 210KT.

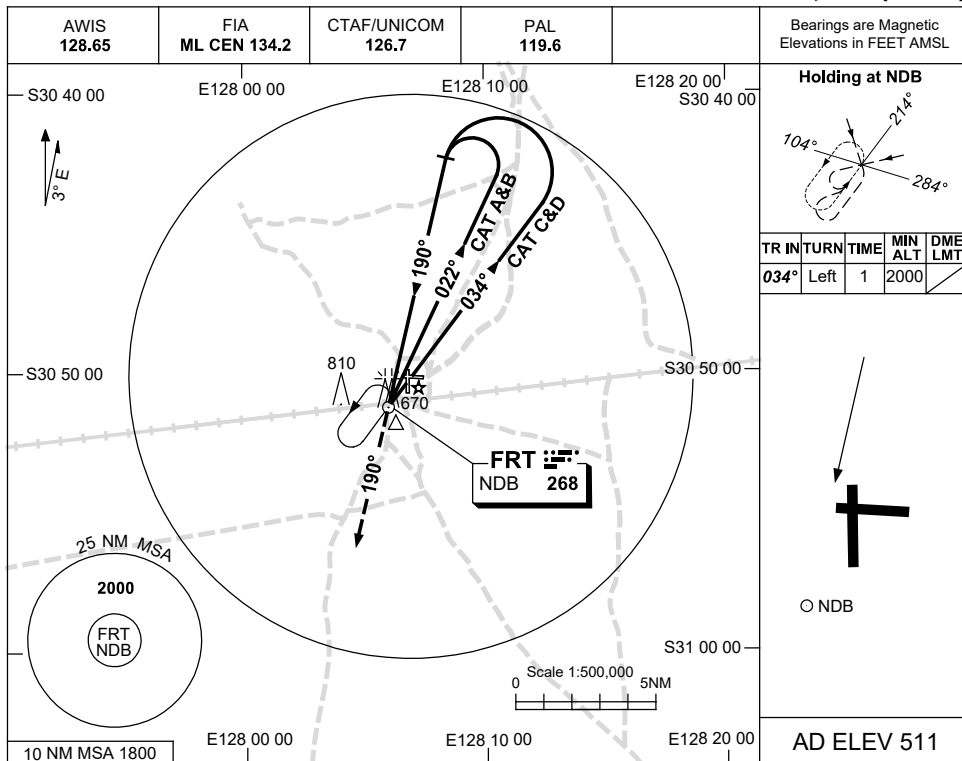
Changes: LNAV/VNAV, LNAV MINIMA, THR ELEV.

FRTGN02-177

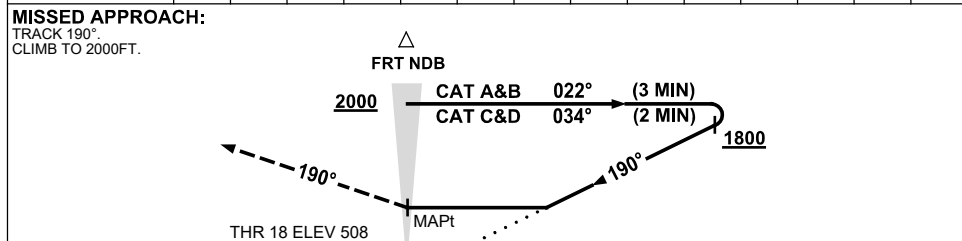
USE QNH

NDB RWY 18
FORREST, WA (YFRT)

30 NOV 2023



DME DIST	NOT APPLICABLE									
ALT										



NOTES

- MAX IAS:
 INITIAL :
 CAT C&D : 210KT.

CATEGORY	A	B	C	D
S-I NDB	1180 (669-3.8)			
CIRCLING	1210 (699-2.4)	1310 (799-4.0)	1310 (799-5.0)	
ALTERNATE	(1199-4.4)	(1299-6.0)	(1299-7.0)	

Changes: THR ELEV.

FRTNB01-177