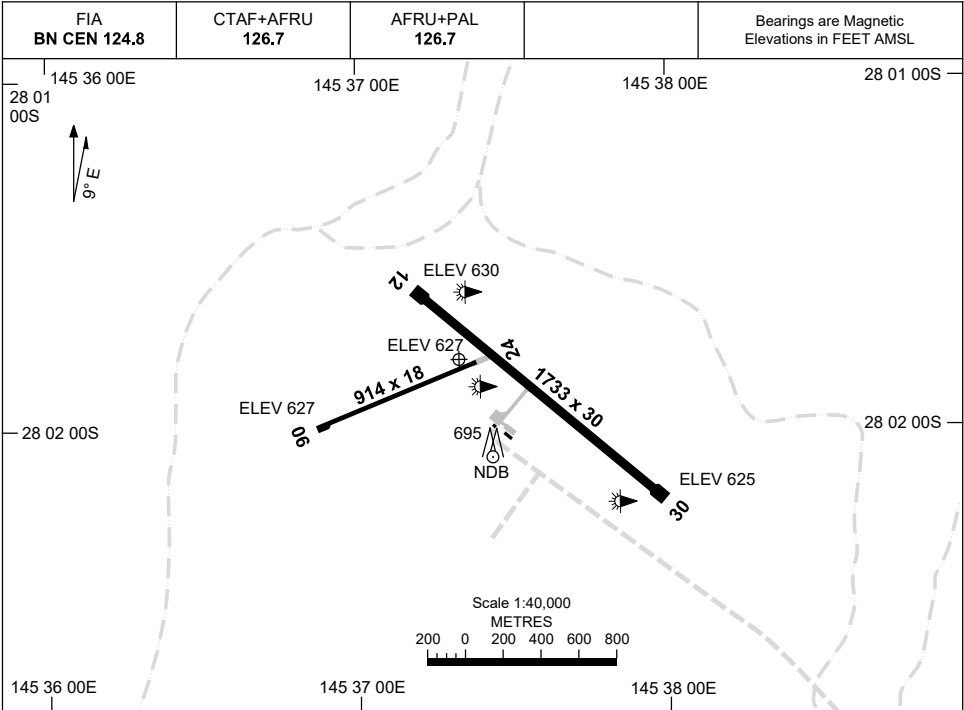


15 JUN 2023

AD ELEV 630  
28 01 48S 145 37 20E

**AERODROME CHART  
CUNNAMULLA, QLD (YCMU)**



	<b>AERODROME LIGHTING</b>	
<b>RWY</b>	TAXIWAY : BLUE EDGE RL : AFRU+PAL 126.7 , PTBL PN, SDBY PWR (15 MIN PN)	
<b>12</b> <small>121</small>	LIRL	
<small>301</small> <b>30</b>	LIRL	
<b>06</b> <small>059</small>	NIL	
<small>239</small> <b>24</b>	NIL	

**NOTES**

1. BN CEN FIA 124.8 AVBL ABV 7000FT.

Changes: REMOVE NOTE 1.

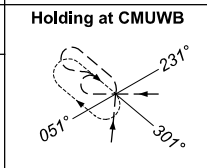
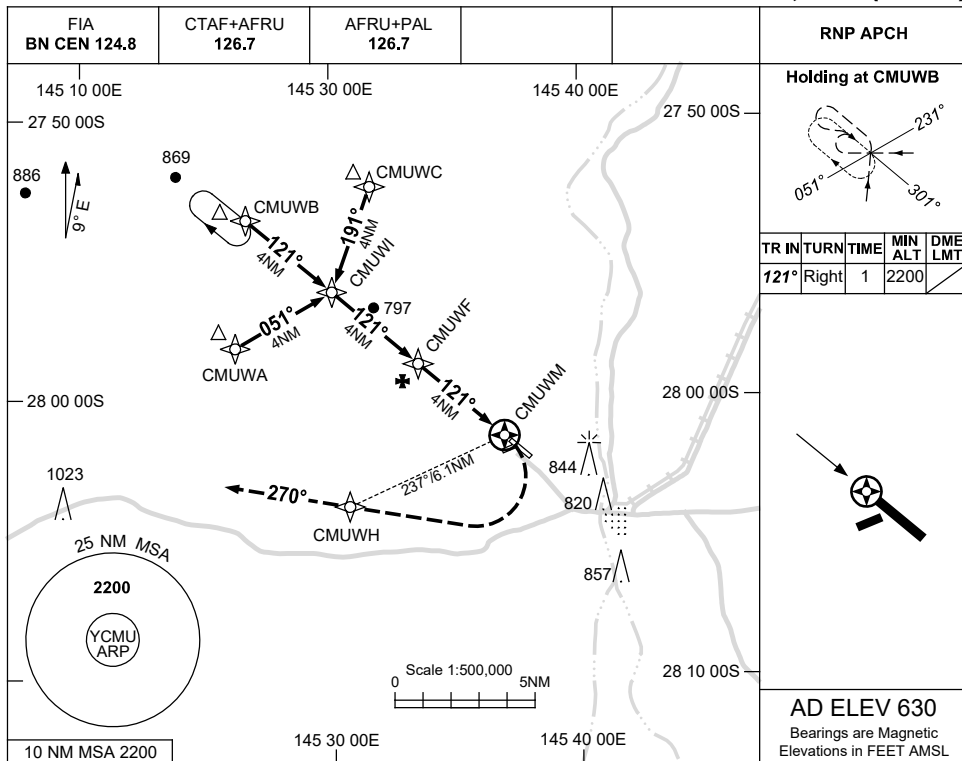
CMUAD01-175

USE QNH

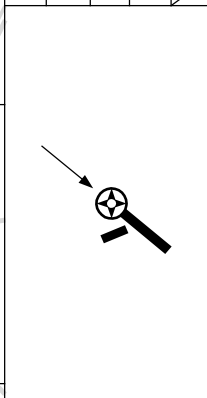
RNP RWY 12

16 JUN 2022

CUNNAMULLA, QLD (YCMU)

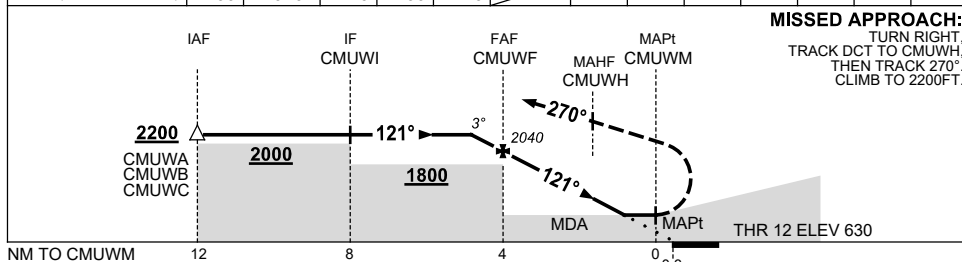


TR	IN	TURN	TIME	MIN ALT	DME LMT
121°	Right		1	2200	



**AD ELEV 630**  
Bearings are Magnetic  
Elevations in FEET AMSL

NM TO NEXT WPT	0.5	CMUWF	3	2	1.2	CMUWM				
ALT (3° APCH PATH)	2200	2040	1720	1400	1140					



**MISSED APPROACH:**  
TURN RIGHT,  
TRACK DCT TO CMUWH,  
THEN TRACK 270°.  
CLIMB TO 2200FT.

**NOTES**

CATEGORY	A	B	C	D
LNAV	1140 (510-2.9)			NOT APPLICABLE
CIRCLING	1240 (610-2.4)	1340 (710-4.0)		
ALTERNATE	(1110-4.4)		(1210-6.0)	

1. MAX IAS:  
INITIAL : 210KT.  
MAP TURN: 210KT.

Changes: CHART TITLE, PBN SPECIFICATION BOX.

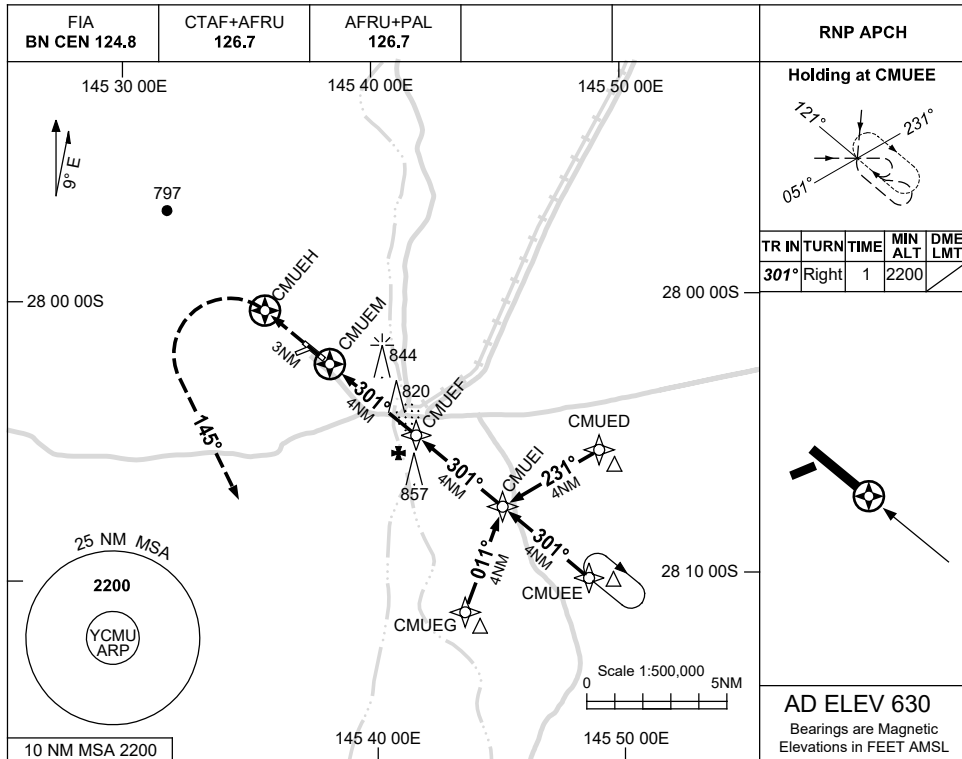
CMUGN01-171

USE QNH

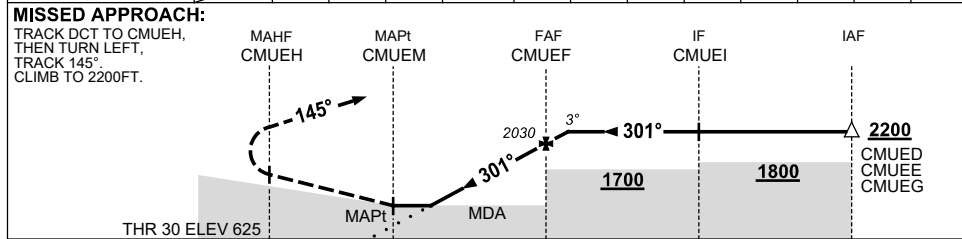
RNP RWY 30

16 JUN 2022

CUNNAMULLA, QLD (YCMU)



NM TO NEXT WPT	CMUEM	1.3	2	3	CMUEF	0.5				
ALT (3° APCH PATH)		1190	1400	1720	2030	2200				



**NOTES**

CATEGORY	A	B	C	D
LNAV	1190 (560-3.2)			NOT APPLICABLE
CIRCLING	1240 (610-2.4)	1340 (710-4.0)		
ALTERNATE	(1110-4.4)		(1210-6.0)	

1. MAX IAS:  
INITIAL : 210KT.

Changes: CHART TITLE, PBN SPECIFICATION BOX.

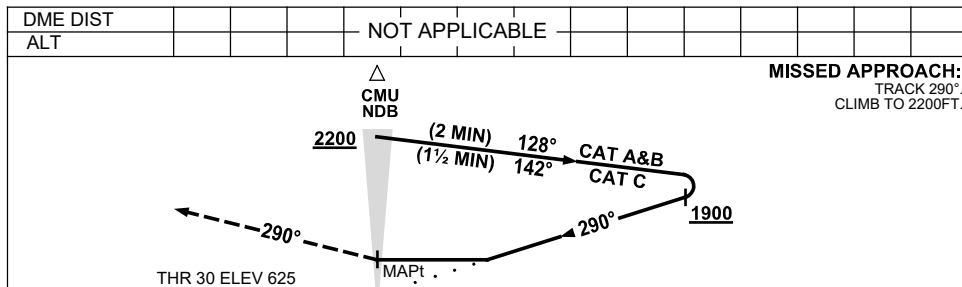
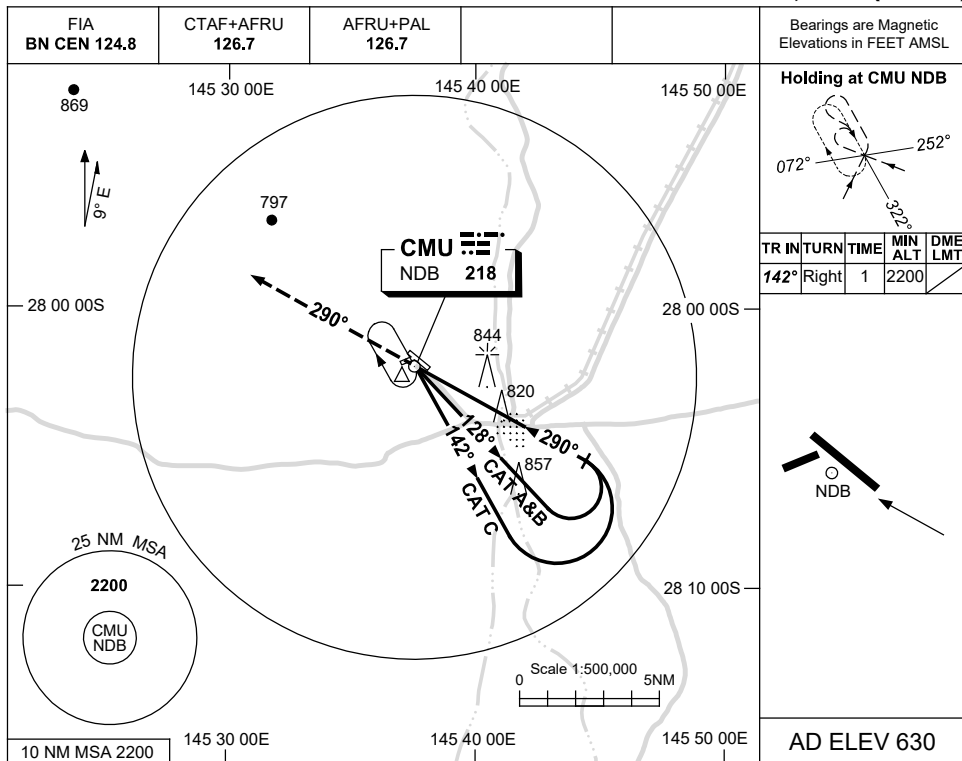
CMUGN02-171

USE QNH

NDB RWY 30

17 JUN 2021

CUNNAMULLA, QLD (YCMU)



**NOTES**

CATEGORY	A	B	C	D
S-I NDB	1240 (610-3.5)			NOT APPLICABLE
CIRCLING	1240 (610-2.4)	1340 (710-4.0)		
ALTERNATE	(1110-4.4)		(1210-6.0)	

1. MAX IAS:  
INITIAL : 210KT.

Changes: MINIMA, CIRCLING ALTS, GRID COORD FORMAT, Editorial.

CMUNB01-167