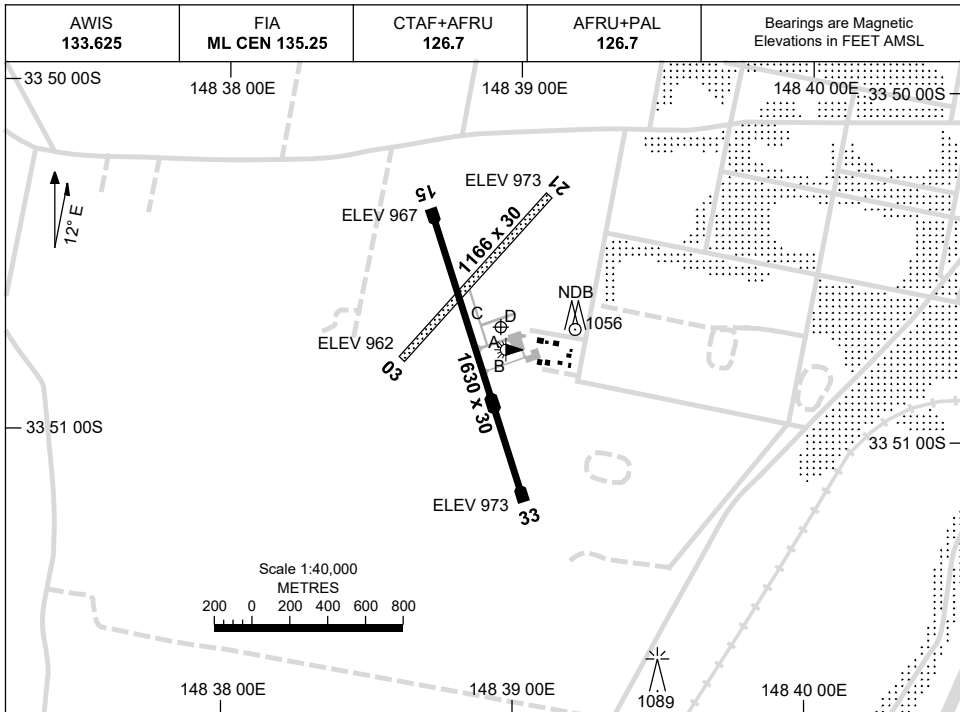


2 DEC 2021

AD ELEV 973
33 50 41S 148 38 56E

AERODROME CHART
COWRA, NSW (YCWR)



	AERODROME LIGHTING	
RWY	TAXIWAY : BLUE EDGE RL : AFRU+PAL 126.7	
15 <small>150</small>	LIRL	
<small>330</small> 33	LIRL	
03 <small>029</small>	NIL	
<small>209</small> 21	NIL	
NOTES		
1. AWIS RQ 1 SEC PULSE TO ACTIVATE.		

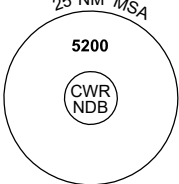
Changes: NOTE 1.

CWRAD01-169

GNSS ARRIVAL PROCEDURES COWRA, NSW (YCWR)


5 NOV 2020

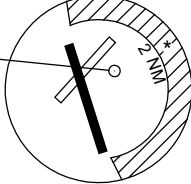
AWIS 133.625	FIA ML CEN 135.25	CTAF+AFRU 126.7	AFRU+PAL 126.7		Bearings are Magnetic Elevations in FEET AMSL
-----------------	----------------------	--------------------	-------------------	--	--



25 NM MSA
5200
CWR NDB

REFERENCE WAYPOINT CWR NDB





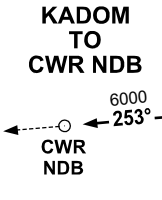
2 NM MSA

10 NM MSA 3600

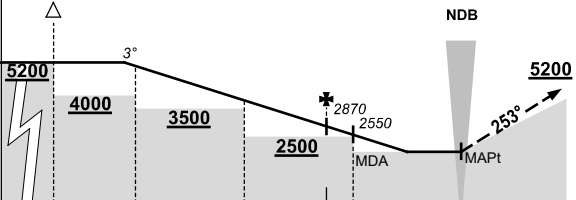
* NO CIRCLING E
OF RWY 15/33
BEYOND 2NM.

AD ELEV 973

KADOM TO CWR NDB



6000
253°
CWR NDB



NDB

5200


253°

MISSED APPROACH:

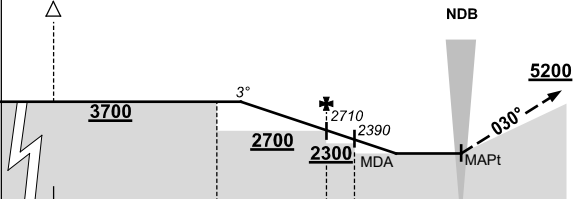
TRACK 253°. CLIMB TO 5200FT.

NM TO CWR NDB	25	15	12	8	5	4	0							
CIRCLING MINIMA	A,B: 1920-2.4			C: 1920-4.0		D: N/A								
NM TO CWR NDB	12.3	12	11	10	9	8	7	6	5	4	3	2		
ALT (3° APCH PATH)	5200	5100	4780	4460	4150	3830	3510	3190	2870	2550	2230	1920		

SCAPA TO CWR NDB



3700
030°
CWR NDB



NDB

5200

030°

MISSED APPROACH:

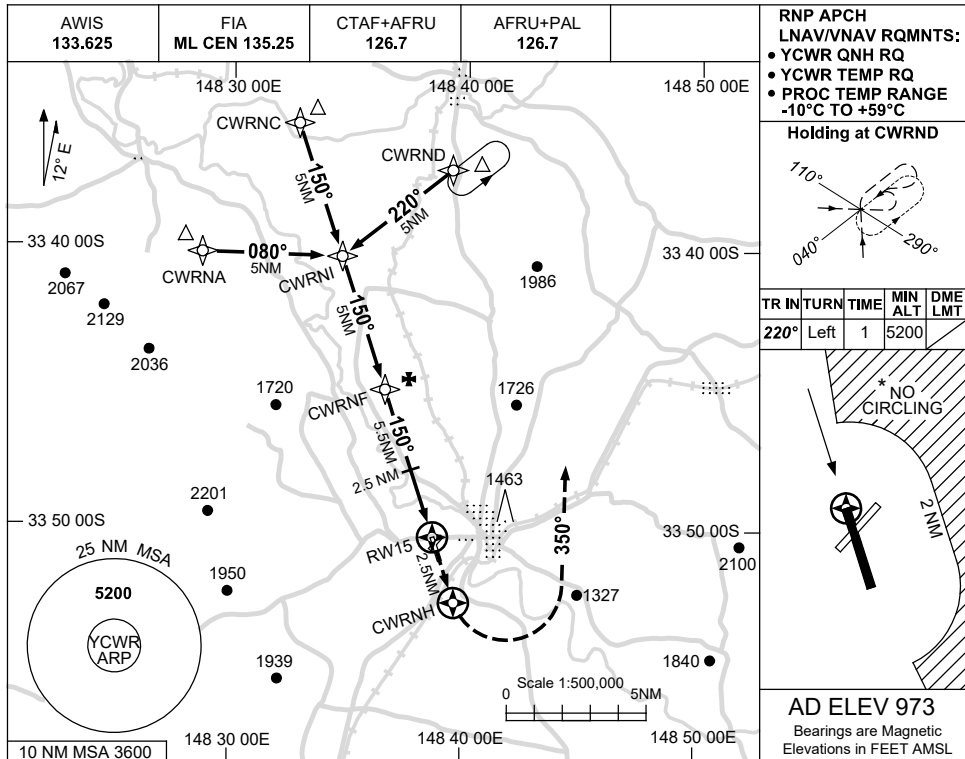
TRACK 030°. CLIMB TO 5200FT.

NM TO CWR NDB	15	9	5	4	0									
CIRCLING MINIMA	A,B: 1850-2.4			C: 1850-4.0		D: N/A								
NM TO CWR NDB	8.1	8	7	6	5	4	3	2.3						
ALT (3° APCH PATH)	3700	3660	3340	3020	2710	2390	2070	1850						

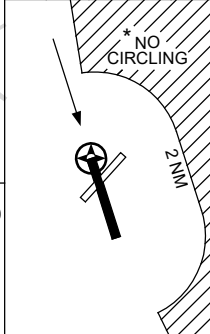
USE QNH

RNP RWY 15
COWRA, NSW (YCWR)

21 MAR 2024

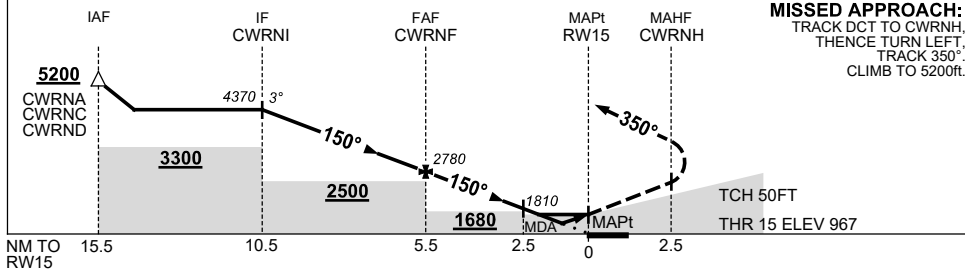


TR	IN	TURN	TIME	MIN ALT	DME LMT
220°	Left	1		5200	



AD ELEV 973
 Bearings are Magnetic
 Elevations in FEET AMSL

NM TO NEXT WPT	CWRNI	4	3	2	1	CWRNF	4	3	2.5	2	1.6	1	RW15
ALT (3° APCH PATH)	4370	4050	3740	3420	3100	2780	2290	1970	1810	1650	1540	1320	



MISSED APPROACH:
 TRACK DCT TO CWRNH,
 THEN TURN LEFT,
 TRACK 350°,
 CLIMB TO 5200ft.

NOTES

CATEGORY	A	B	C	D
LNAV/VNAV		1320 (353-2.0)		NOT APPLICABLE
LNAV		1540 (567-3.2)		
CIRCLING *	1650 (677-2.4)		1810 (837-4.0)	
ALTERNATE	(1177-4.4)		(1337-6.0)	

- MAX IAS: INITIAL : 210KT.
- *2. NO CIRCLING E OF RWY 15/33 BEYOND 2NM.

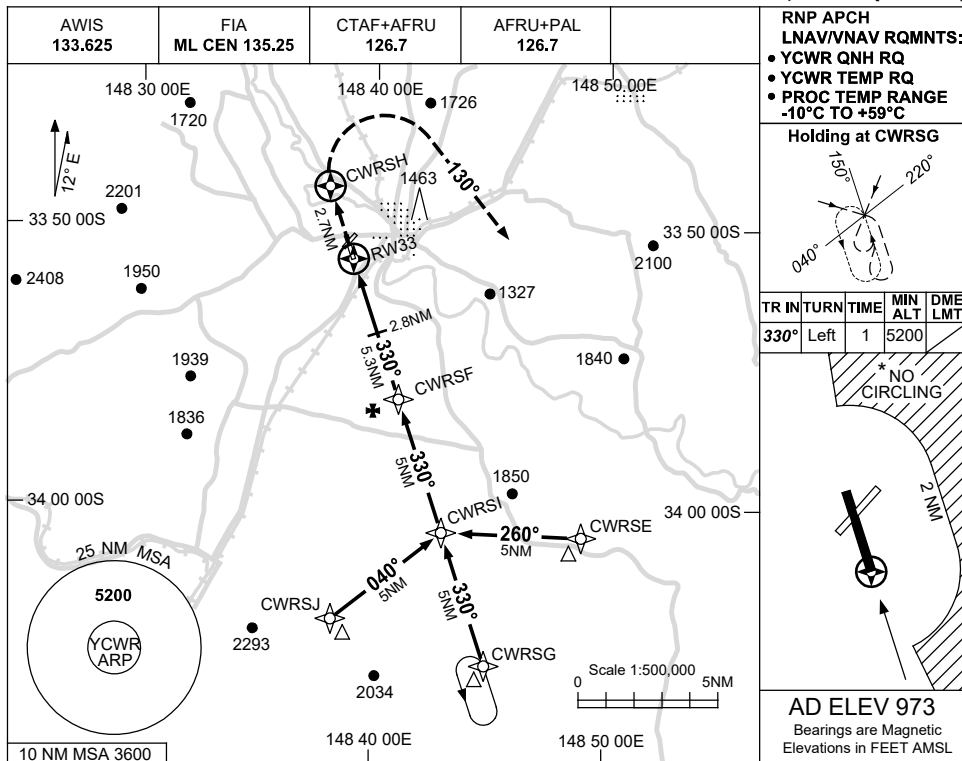
Changes: MODEL ACFT SYMBOL REMOVED, Editorial.

CWRGN01-178

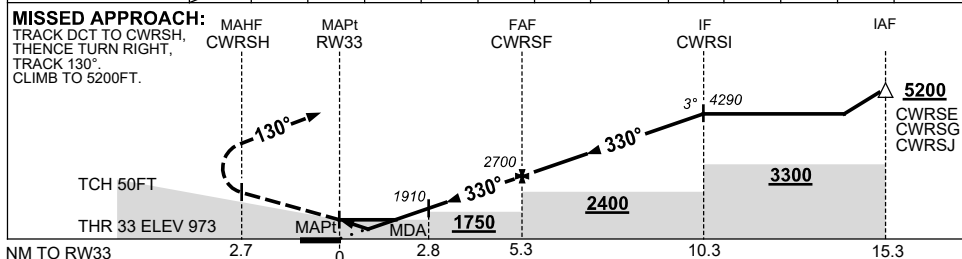
USE QNH

RNP RWY 33
COWRA, NSW (YCWR)

15 JUN 2023



NM TO NEXT WPT	RW33	1.2	1.8	2.8	3	4	5	CWRSF	1	2	3	4	CWRSI
ALT (3° APCH PATH)		1400	1600	1910	1980	2300	2620	2700	3020	3340	3660	3970	4290



NOTES

CATEGORY	A	B	C	D
LNAV/VNAV	1400 (427-2.4)			NOT APPLICABLE
LNAV	1600 (627-3.6)			
CIRCLING*	1650 (677-2.4)		1810 (837-4.0)	
ALTERNATE	(1177-4.4)		(1337-6.0)	

1. MAX IAS: INITIAL : 210KT.
- *2. NO CIRCLING E OF RWY 15/33 BEYOND 2NM.

Changes: CHART TITLE, PBN SPECIFICATION BOX, Editorial.

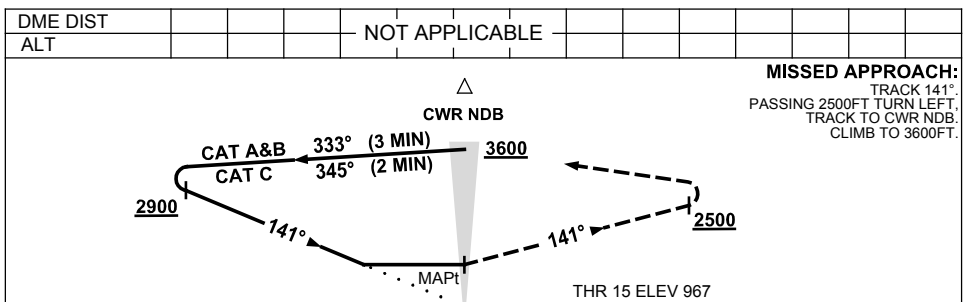
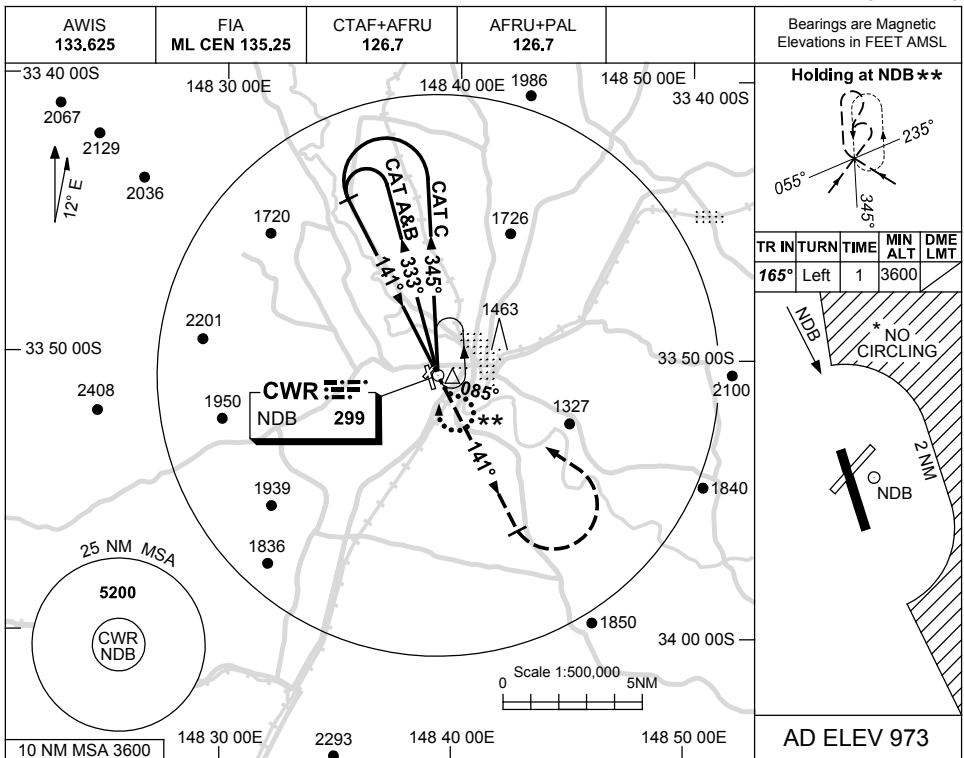
CWRGN02-175

USE QNH

NDB RWY 15

COWRA, NSW (YCWR)

23 MAY 2019



NOTES

1. MAX IAS:
HOLDING: 210KT.
INITIAL:
CAT C 210KT.
- *2. NO CIRCLING E OF RWY 15/33 BEYOND 2NM.
- **3. PROC TURN (80°/260°) RQ TO JOIN PROC FROM HOLD.

CATEGORY	A	B	C	D
S-I NDB	1850 (877-5.0)			NOT APPLICABLE
CIRCLING *	1850 (877-2.4)	1850 (877-4.0)		
ALTERNATE	(1377-4.4)		(1377-6.0)	

Changes: CO-ORD FORMAT.

CWRNB01-159