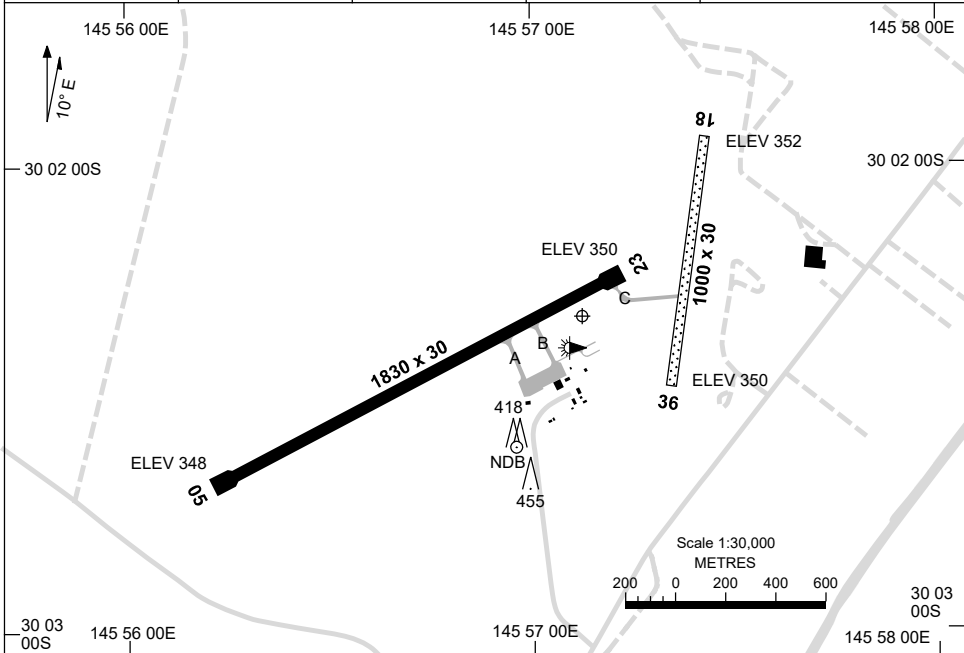


2 DEC 2021

AD ELEV 352
30 02 19S 145 57 07E

AERODROME CHART
BOURKE, NSW (YBKE)

| | | | | |
|-----------------|----------------------|--------------------|-------------------|--|
| AWIS 122.875 | FIA ML CEN 125.35 | CTAF+AFRU 126.7 | AFRU+PAL 126.7 | Bearings are Magnetic Elevations in FEET AMSL |
|-----------------|----------------------|--------------------|-------------------|--|



| RWY | | AERODROME LIGHTING |
|------------------------------|--|---|
| | | TAXIWAY : BLUE EDGE RL : AFRU+PAL 126.7 , SDBY (120 SEC) |
| 05 <small>053</small> | | LIRL |
| <small>233</small> 23 | | LIRL |
| 18 <small>178</small> | | NIL |
| <small>358</small> 36 | | NIL |

NOTES

1. AWIS RQ 1 SEC TRANSMIT PULSE TO ACTIVATE.

Changes: ARP COORD.

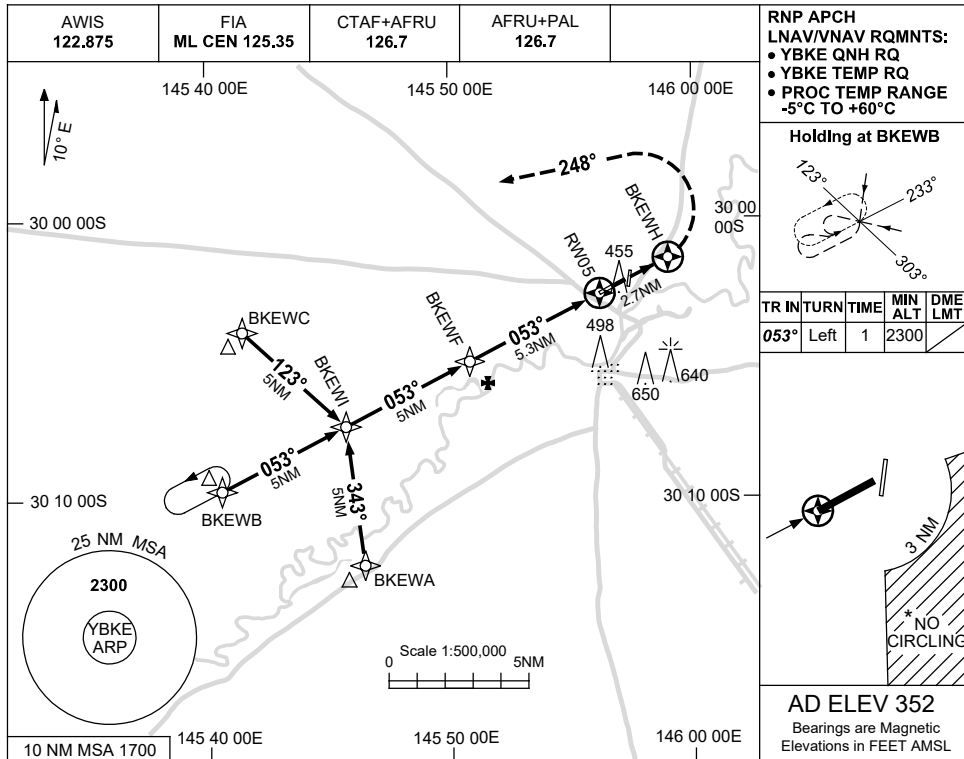
BKEAD01-169

USE QNH

RNP RWY 05

BOURKE, NSW (YBKE)

1 DEC 2022

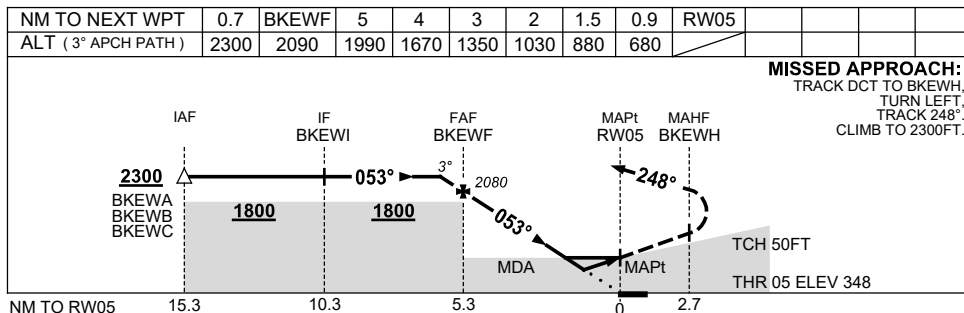


RNP APCH
 LNAV/VNAV RQMTS:
 • YBKE QNH RQ
 • YBKE TEMP RQ
 • PROC TEMP RANGE
 -5°C TO +60°C

Holding at BKEWH

| TR | IN | TURN | TIME | MIN ALT | DME LMT |
|------|------|------|------|---------|---------|
| 053° | Left | 1 | 2300 | | |

AD ELEV 352
 Bearings are Magnetic
 Elevations in FEET AMSL



NOTES

| CATEGORY | A | B | C | D |
|------------|---------------|---------------|----------------|----------------|
| LNAV/VNAV | | 680 (332-1.9) | | NOT APPLICABLE |
| LNAV | | 880 (528-3.0) | | |
| CIRCLING * | 950 (598-2.4) | | 1050 (698-4.0) | |
| ALTERNATE | (1098-4.4) | | (1198-6.0) | |

- MAX IAS:
INITIAL : 230KT.
- *2. NO CIRCLING BEYOND 3NM SOUTH EAST OF RWY 18/36.

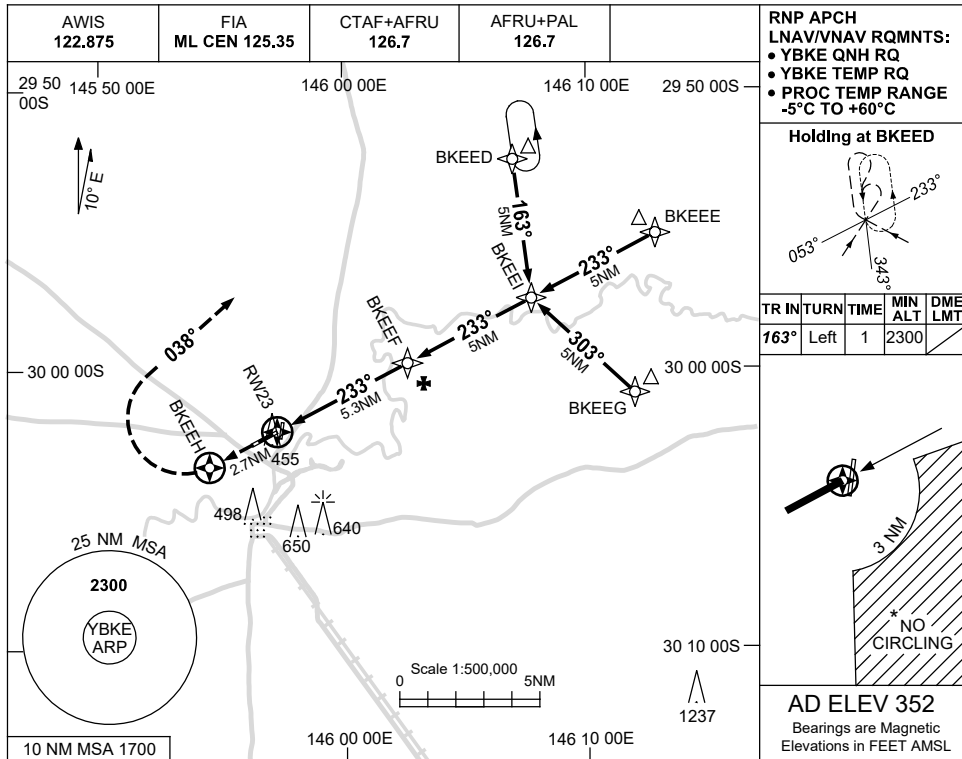
Changes: CHART TITLE, PBN SPECIFICATION BOX.

BKEGN01-173

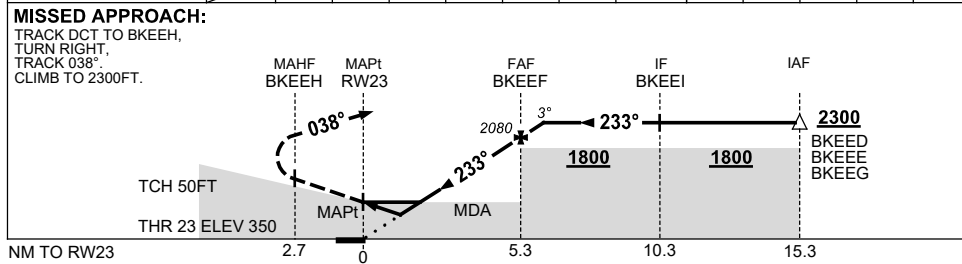
USE QNH

RNP RWY 23
BOURKE, NSW (YBKE)

1 DEC 2022



| NM TO NEXT WPT | RW23 | 0.9 | 1.5 | 2 | 3 | 4 | 5 | BKEEF | 0.7 | | | |
|--------------------|------|-----|-----|------|------|------|------|-------|------|--|--|--|
| ALT (3° APCH PATH) | | 680 | 880 | 1040 | 1360 | 1670 | 1990 | 2090 | 2300 | | | |



NOTES

| CATEGORY | A | B | C | D |
|-----------|---------------|---|----------------|----------------|
| LNAV/VNAV | 680 (330-1.8) | | | NOT APPLICABLE |
| LNAV | 880 (528-3.0) | | | |
| CIRCLING* | 950 (598-2.4) | | 1050 (698-4.0) | |
| ALTERNATE | (1098-4.4) | | (1198-6.0) | |

1. MAX IAS:
INITIAL : 230KT.
- * 2. NO CIRCLING
BEYOND 3NM
SOUTH EAST OF
RWY 18/36.

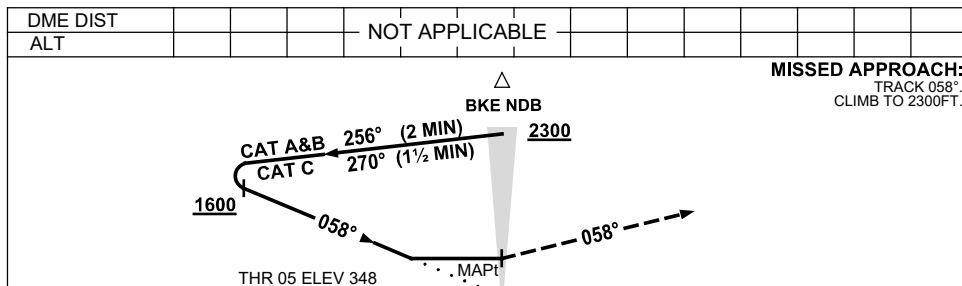
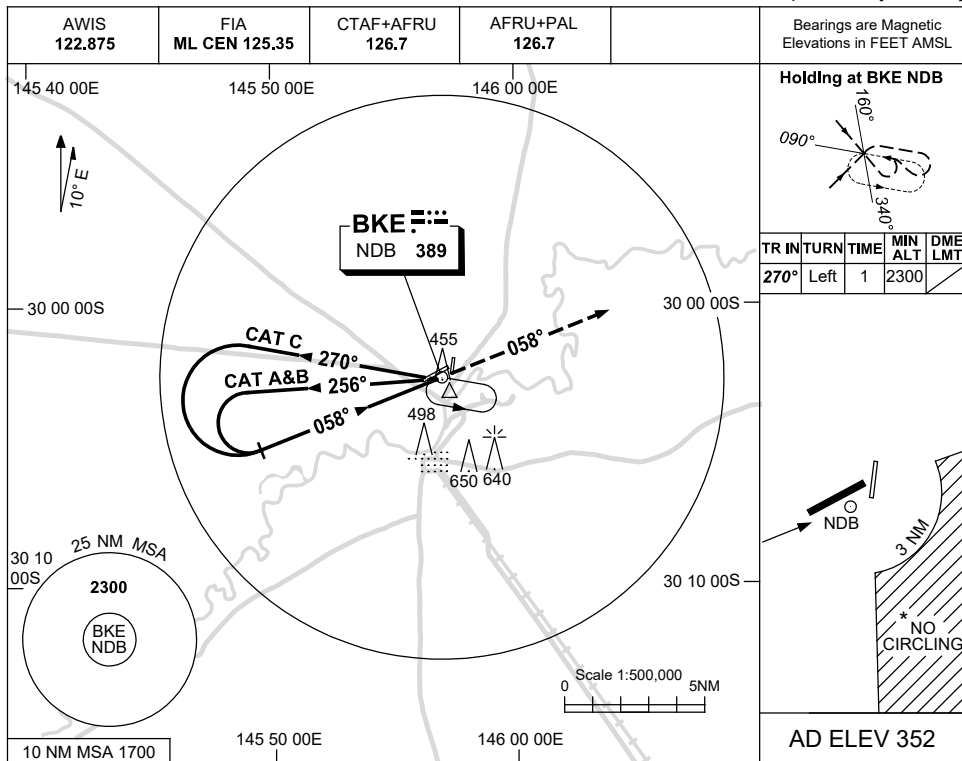
Changes: CHART TITLE, PBN SPECIFICATION BOX.

BKEGN02-173

USE QNH

NDB RWY 05
BOURKE, NSW (YBKE)

9 SEP 2021



| CATEGORY | A | B | C | D |
|------------|----------------------|---|-----------------------|----------------|
| S-I NDB | 930 (578-3.2) | | | NOT APPLICABLE |
| CIRCLING * | 950 (598-2.4) | | 1050 (698-4.0) | |
| ALTERNATE | (1098-4.4) | | (1198-6.0) | |

- NOTES**
1. MAX IAS:
INITIAL : 210KT.
 - * 2. NO CIRCLING BEYOND 3NM SOUTH EAST OF RWY 18/36.

Changes: THR ELEV.

BKENB01-168