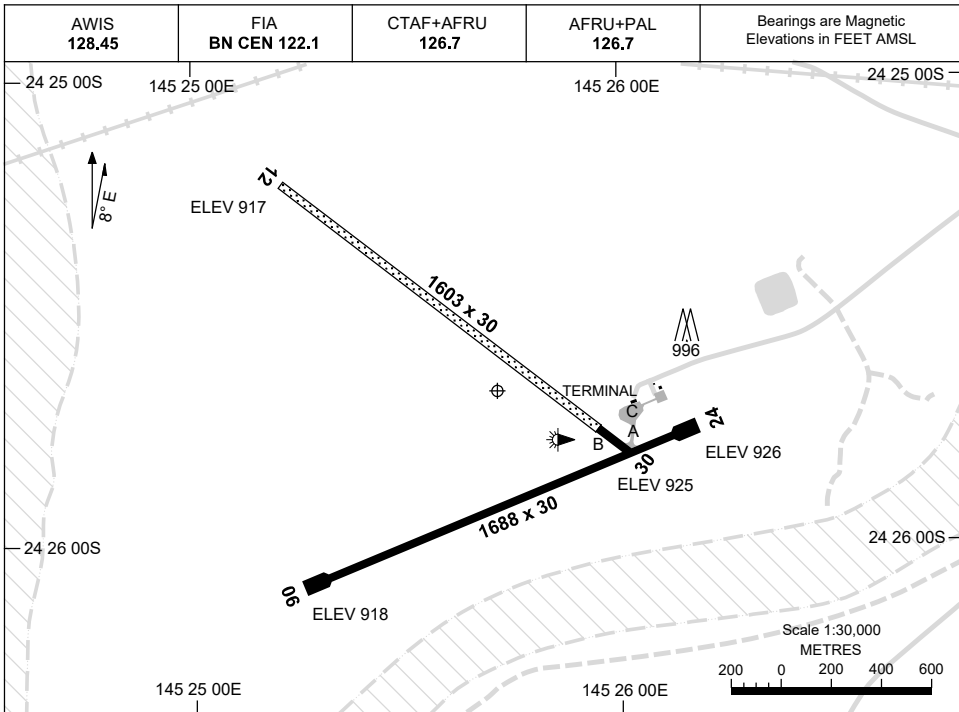


7 SEP 2023

AD ELEV 928
24 25 40S 145 25 43E

AERODROME CHART
BLACKALL, QLD (YBCK)



AERODROME LIGHTING	
RWY	TAXIWAY : BLUE EDGE RL : AFRU+PAL 126.7
06 <small>059</small>	LIRL
<small>239</small> 24	LIRL
12 <small>119</small>	NIL
<small>299</small> 30	NIL

NOTES

1. FIA FREQ 122.1 AVBL 6,000FT.

Changes: PTBL LIGHTING REMOVED.

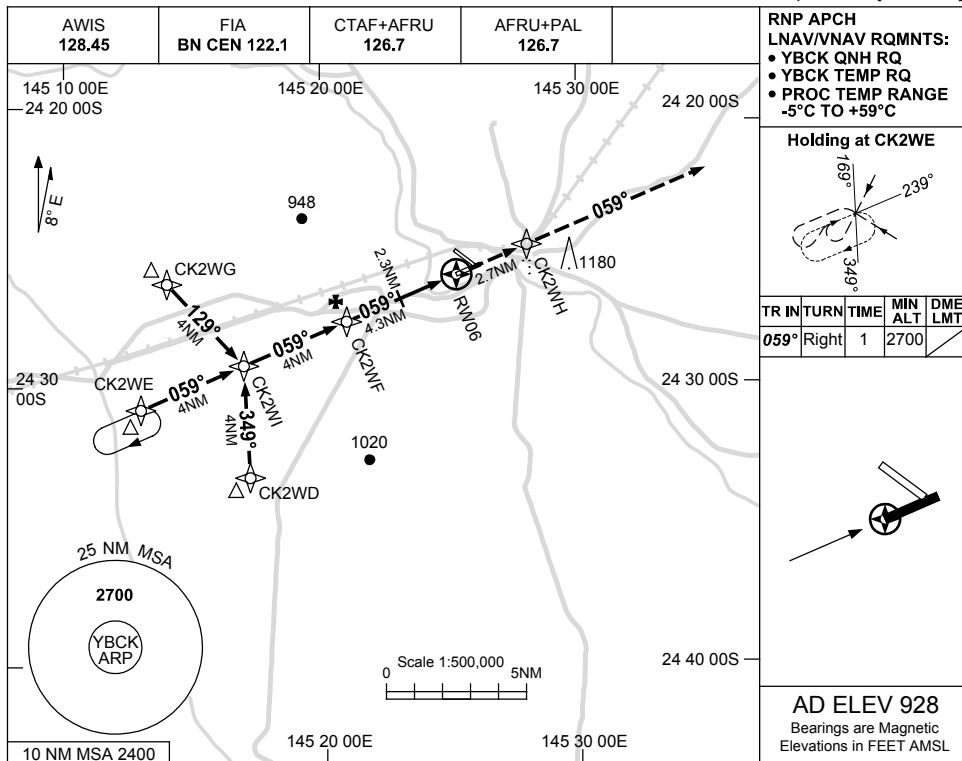
BCKAD01-176

USE QNH

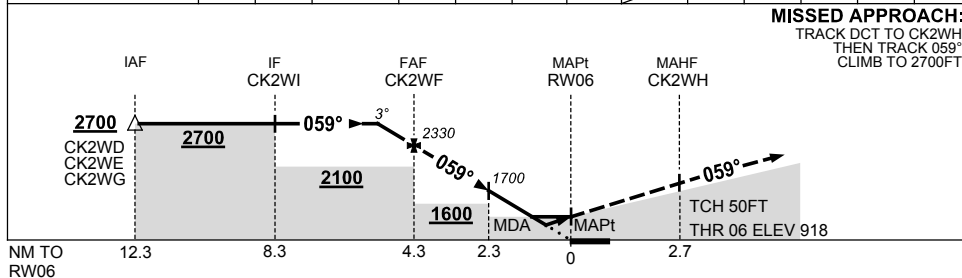
RNP RWY 06

BLACKALL, QLD (YBCK)

23 MAR 2023



NM TO NEXT WPT	1.2	1	CK2WF	3	2.3	1.4	0.8	RW06
ALT (3° APCH PATH)	2700	2650	2330	1920	1700	1400	1210	



NOTES

CATEGORY	A	B	C	D
LNAV/VNAV		1210 (292-1.6)		NOT APPLICABLE
LNAV		1400 (482-2.7)		
CIRCLING	1520 (592-2.4)		1680 (752-4.0)	
ALTERNATE	(1092-4.4)		(1252-6.0)	

1. MAX IAS:
INITIAL : 210KT.

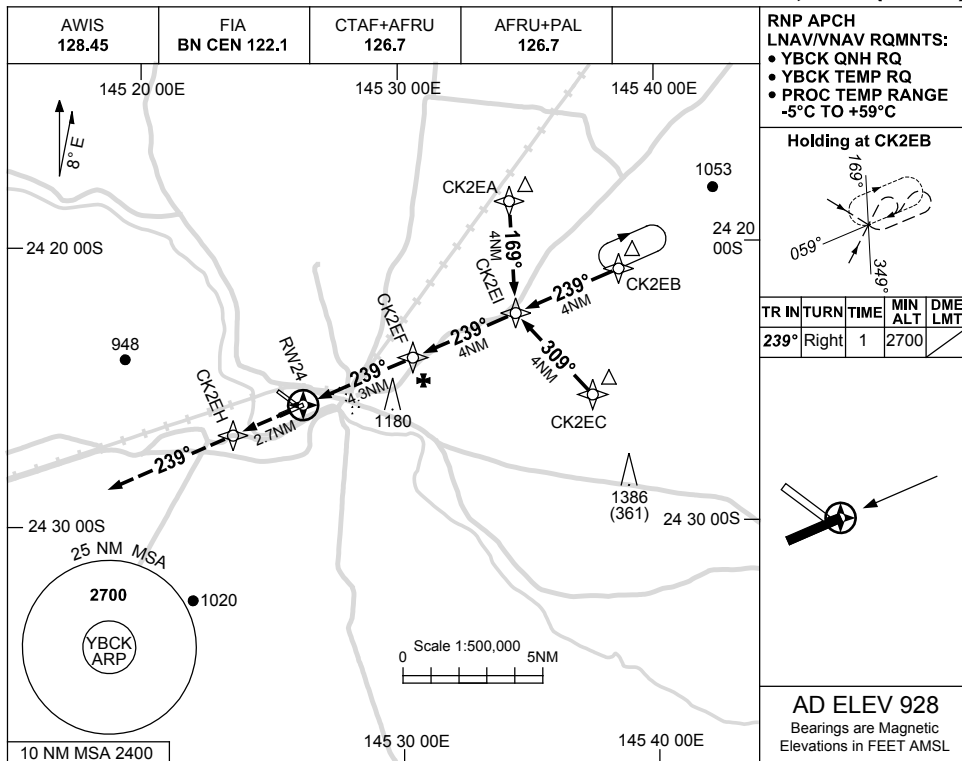
Changes: CAT C CIRCLING MINIMA, SDF MIN ALT, WPT NAMING CONVENTION, 1180FT OBST.

BCKGN01-174

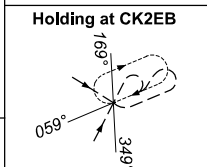
USE QNH

RNP RWY 24
BLACKALL, QLD (YBCK)

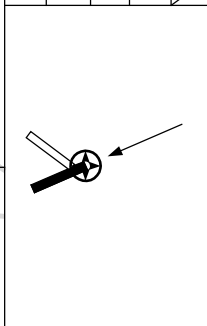
23 MAR 2023



RNP APCH
 LNAV/VNAV RQMNTS:
 • YBCK QNH RQ
 • YBCK TEMP RQ
 • PROC TEMP RANGE
 -5°C TO +59°C

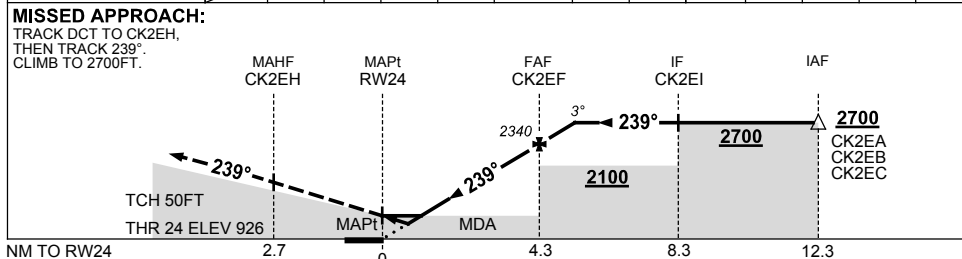


TR	IN	TURN	TIME	MIN ALT	DME LMT
239°	Right		1	2700	



AD ELEV 928
 Bearings are Magnetic
 Elevations in FEET AMSL

NM TO NEXT WPT	RW24	1	1.6	2	3	CK2EF	1	1.1				
ALT (3° APCH PATH)		1270	1470	1610	1930	2340	2660	2700				



NOTES

CATEGORY	A	B	C	D
LNAV/VNAV		1270 (344-1.9)		NOT APPLICABLE
LNAV		1470 (542-3.1)		
CIRCLING	1520 (592-2.4)		1680 (752-4.0)	
ALTERNATE	(1092-4.4)		(1252-6.0)	

1. MAX IAS:
 INITIAL : 210KT.

Changes: CAT C CIRCLING MINIMA, WPT NAMING CONVENTION, 1180FT OBST.

BCKGN02-174