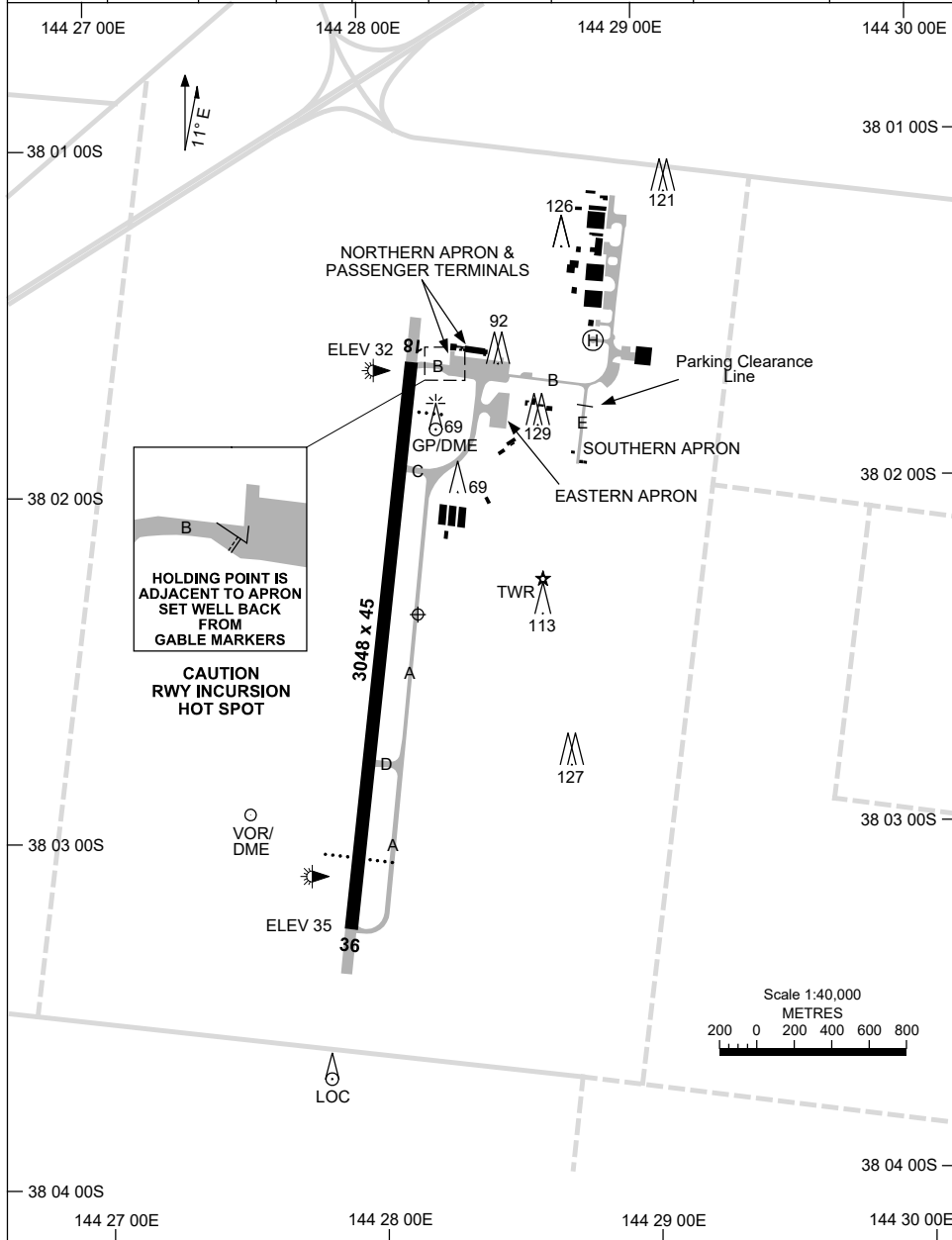


21 MAR 2024

AD ELEV 35
38 02 22S 144 28 10E

AERODROME CHART - Page 1
AVALON, VIC (YMAV)

ATIS 118.2 116.1	AWIS (AH) 116.1	AV APP 133.55	TWR 120.1	UNICOM 129.3	FIA (AH) ML CEN 135.7	CTAF+AFRU (AH) 120.1	AFRU+PAL (AH) 120.1	BRG are MAG ELEV in FT AMSL
---------------------	--------------------	------------------	--------------	-----------------	--------------------------	-------------------------	------------------------	--------------------------------



Changes: PARKING CLEARANCE ADDED, Editorial.

MAVAD01-178

15 JUN 2023

AD ELEV 35
38 02 22S 144 28 10E

AERODROME CHART - Page 2
AVALON, VIC (YMAV)

ATIS 118.2 116.1	AWIS (AH) 116.1	AV APP 133.55	TWR 120.1	UNICOM 129.3	FIA (AH) ML CEN 135.7	CTAF+AFRU (AH) 120.1	AFRU+PAL (AH) 120.1	BRG are MAG ELEV in FT AMSL
---------------------	--------------------	------------------	--------------	-----------------	--------------------------	-------------------------	------------------------	--------------------------------

--	--	--	--	--	--	--	--	--

	AERODROME LIGHTING
--	---------------------------

RWY	ABN : FLG W 4 SEC TAXIWAY : GREEN CENTRELINE RL : MAN , AFRU+PAL (AH) 120.1 , 1 SEC DURING LVP ; 15 SEC OT
------------	--

18 ¹⁷⁶	PAPI LEFT SIDE 3.0° 69FT MIRL
³⁵⁶ 36	PAPI BOTH SIDES 3.0° 65FT MIRL

--	--

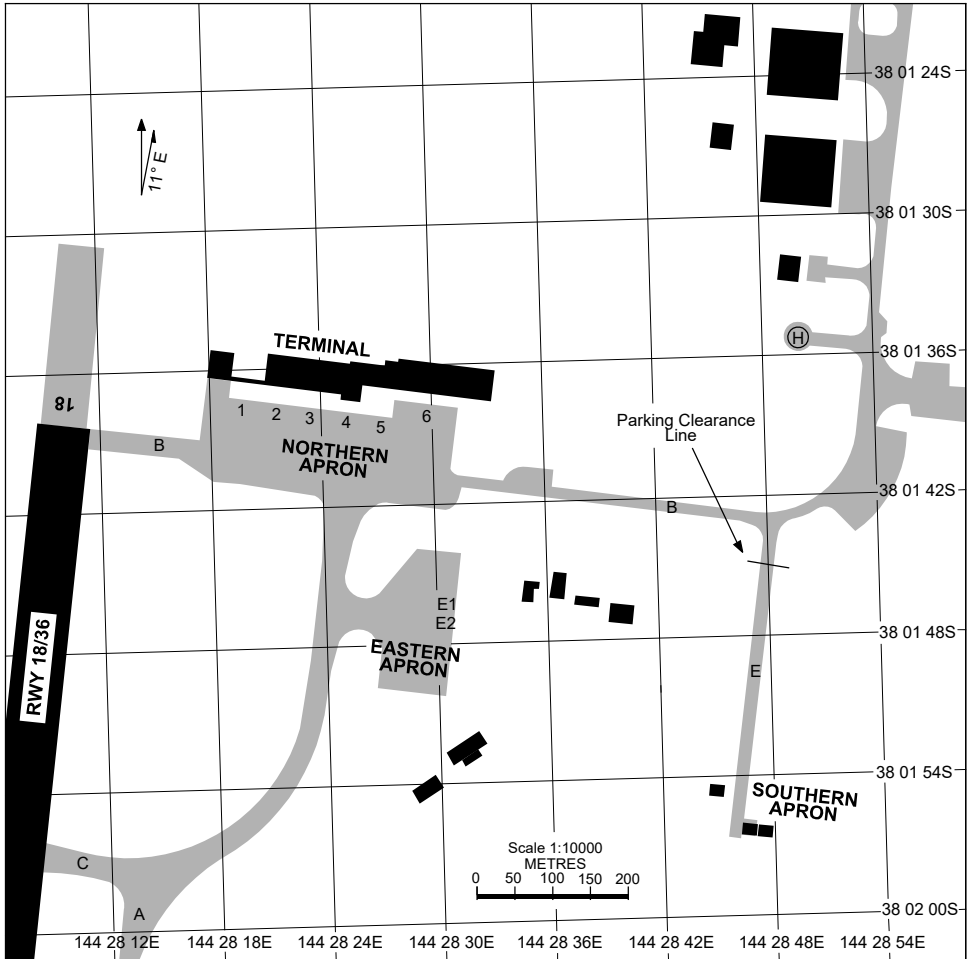
NOTES

Changes: REMOVED NOTES.



21 MAR 2024

APRON CHART
AVALON, VIC (YMAV)



PARKING POSITION INFORMATION

BAYS	CO-ORDINATES	ELEV (ft)	CAPACITY	HYDRANT FUEL	DOCKING SYSTEM
1	38 01 37.31S 144 28 19.78E	30	A320/A321	JET A1	
2	38 01 37.51S 144 28 21.65E	31	A320	JET A1	
3	38 01 37.70S 144 28 23.44E	31	A320	JET A1	
4	38 01 37.92S 144 28 25.48E	31	A320/A321	JET A1	
5	38 01 38.24S 144 28 27.26E	31	A321	JET A1	
6	38 01 38.16S 144 28 29.78E	32	A333/B748	JET A1	
E1	38 01 46.27S 144 28 30.53E	31	B748	JET A1	
E2	38 01 47.10S 144 28 30.37E	31	B748	JET A1	

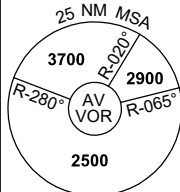
Changes: PARKING CLEARANCE LINE ADDED, Editorial.

MAVAP01-178

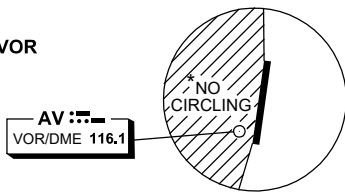
DME or GNSS ARRIVAL PROCEDURES AVALON, VIC (YMAV)

21 MAR 2024

ATIS 118.2 116.1	AWIS (AH) 116.1	AV APP 133.55	TWR 120.1	FIA (AH) ML CEN 135.7	CTAF+AFRU (AH) 120.1	AFRU+PAL (AH) 120.1	Bearings are Magnetic Elevations in FEET AMSL
---------------------	--------------------	------------------	--------------	--------------------------	-------------------------	------------------------	--

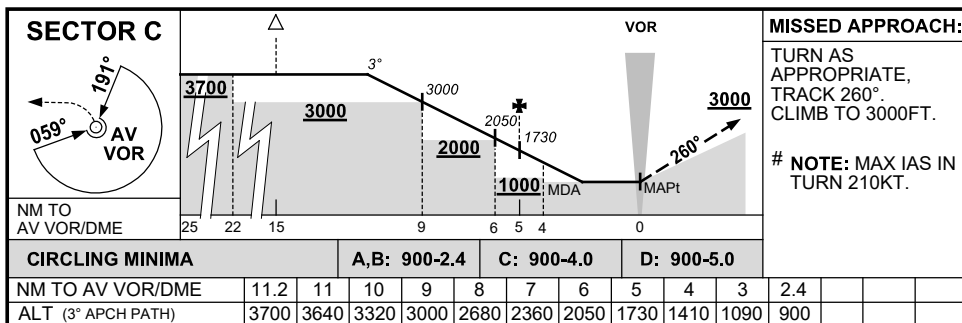
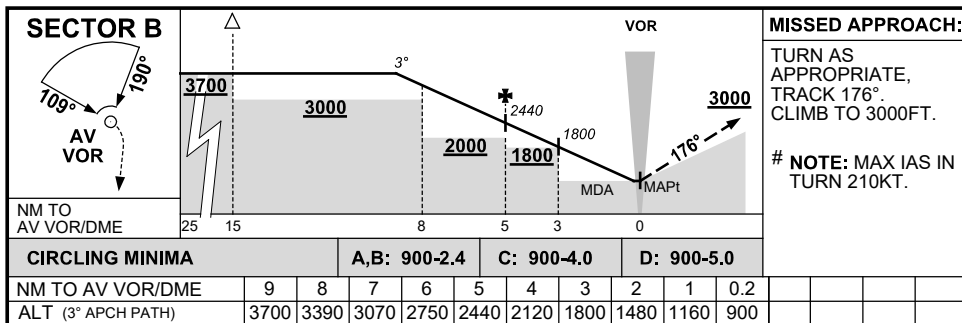
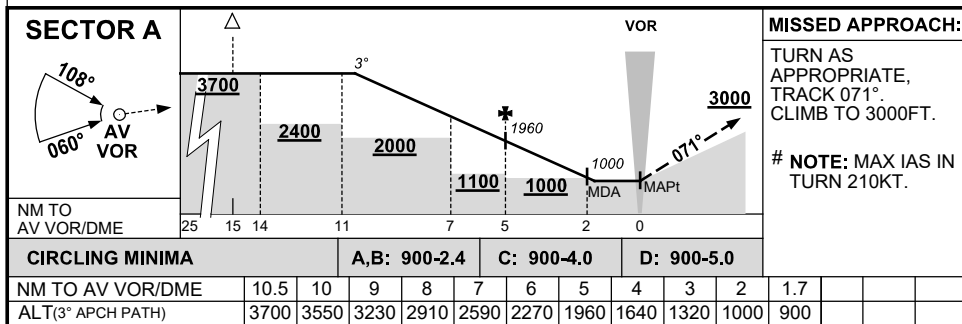


DME USING AV DME REFERENCE WAYPOINT AV VOR



10 NM MSA 2500

AD ELEV 35



Changes: SECTOR A MNM SEGMENT ALT.

MAVDG01-178

**STANDARD INSTRUMENT DEPARTURES (SID)
 AVALON FIVE DEPARTURE (RADAR)
 AVALON, VIC (YMAV)**

24 MAR 2022

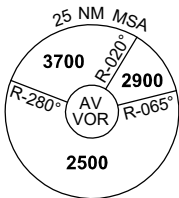
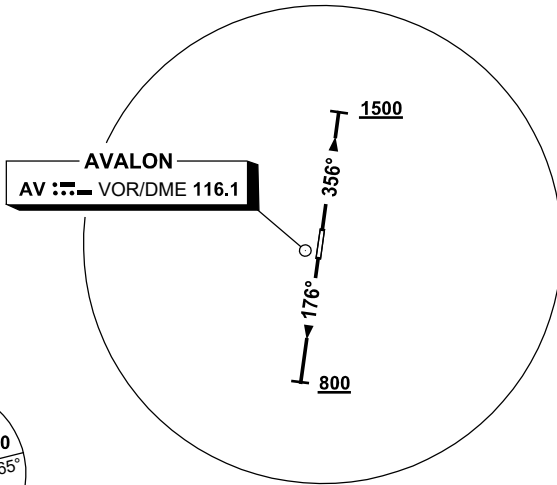
ATIS 118.2 116.1	AWIS (AH) 116.1	AV APP 133.55	TWR 120.1	FIA (AH) ML CEN 135.7	CTAF+AFRU (AH) 120.1	AFRU+PAL (AH) 120.1	Bearings are Magnetic Elevations in FEET AMSL
---------------------	--------------------	------------------	--------------	--------------------------	-------------------------	------------------------	--

NOT TO SCALE



**SPEED
 MAX IAS 250KT
 BELOW 10,000ft**

**CLASS D SPEED
 LIMITS APPLY**



10 NM MSA 2500

GRAD 3.3%

AVALON FIVE DEPARTURE (RADAR)

RWY 18

- Track 176°
- At or ABV 800ft turn to assigned heading or track
- Contact AV Approach for Radar Vector

RWY 36

- Track 356°
- At or ABV 1500ft turn to assigned heading or track
- Contact AV Approach for Radar Vector

COMMUNICATIONS FAILURE PROCEDURE

On recognition of communication failure

- Squawk 7600
- Maintain last assigned vector for two minutes, and
- CLIMB IF NECESSARY TO MINIMUM SAFE ALTITUDE, to maintain terrain clearance, then
- proceed in accordance with the latest ATC route clearance acknowledged.

**STANDARD INSTRUMENT DEPARTURES (SID)
JUSTY THREE DEPARTURE (RNAV)
AVALON, VIC (YMAV)**

21 MAR 2024

ATIS 118.2 116.1	AWIS (AH) 116.1	AV APP 133.55	TWR 120.1	FIA (AH) ML CEN 135.7	CTAF+AFRU (AH) 120.1	AFRU+PAL (AH) 120.1	Bearings are Magnetic Elevations in FEET AMSL
---------------------	--------------------	------------------	--------------	--------------------------	-------------------------	------------------------	--

NOT TO SCALE

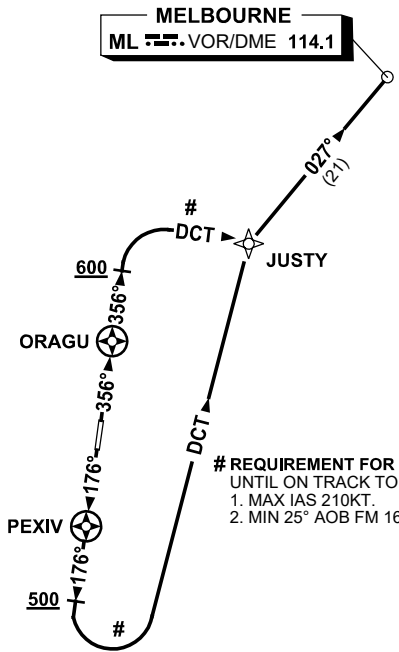


MELBOURNE
ML VOR/DME 114.1

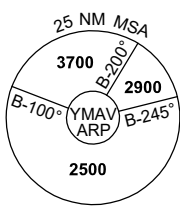
SPEED
MAX IAS 250KT
BLW 10,000FT

CLASS D SPEED
LIMITS APPLY

RNP1



REQUIREMENT FOR AIRSPACE CONTAINMENT
UNTIL ON TRACK TO JUSTY:
1. MAX IAS 210KT.
2. MIN 25° AOB FM 160KT TO 210KT.



10 NM MSA 2500

JUSTY THREE DEPARTURE

RWY 18

- GRAD 3.3%
- Track 176°
- AT or ABV 500ft but not before PEXIV
turn LEFT, track DCT to JUSTY #
- Turn RIGHT, track 027° to ML,
thence as cleared

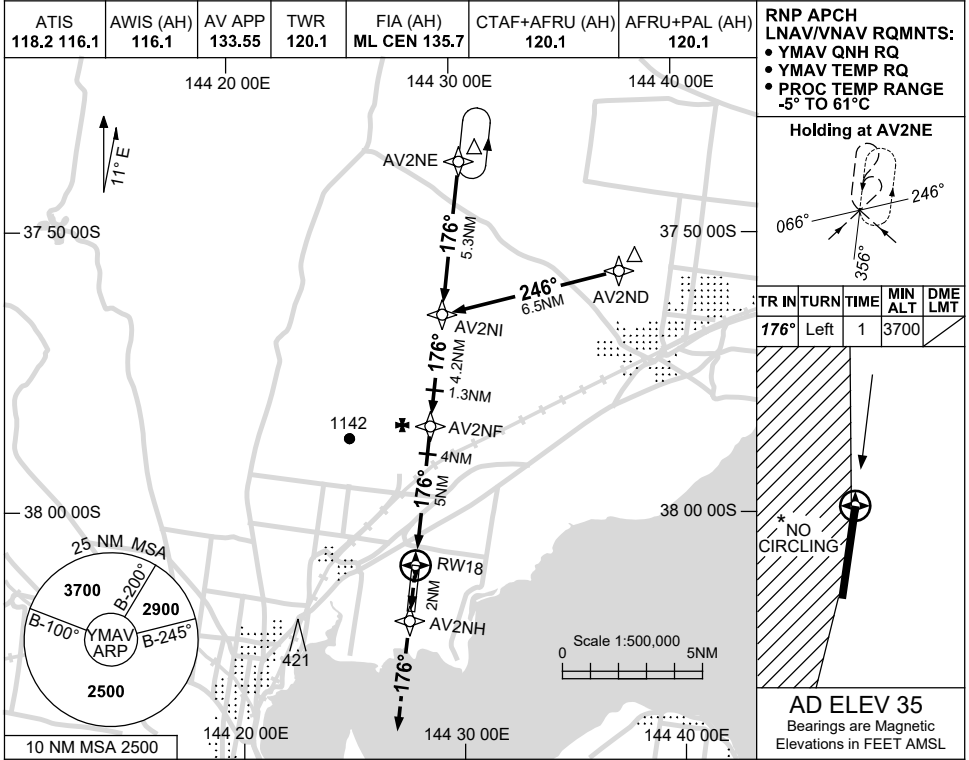
RWY 36

- GRAD 3.3%
- Track 356°
- AT or ABV 600ft but not before ORAGU
turn RIGHT, track DCT to JUSTY #
- Turn LEFT, track 027° to ML,
thence as cleared

USE QNH

RNP RWY 18
AVALON, VIC (YMAV)

30 NOV 2023



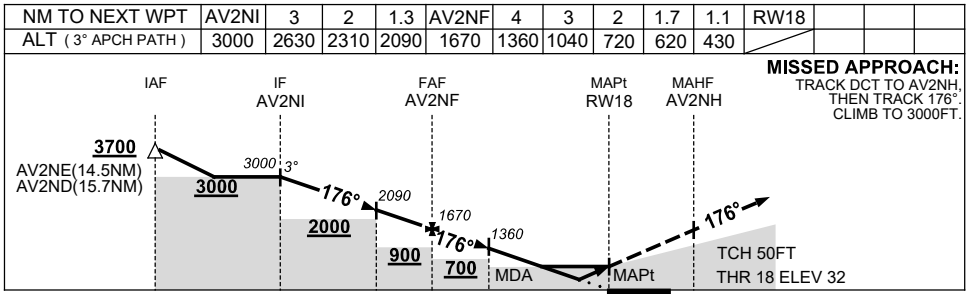
RNP APCH
LNAV/VNAV RQMNTS:
• YMAV QNH RQ
• YMAV TEMP RQ
• PROC TEMP RANGE
-5° TO 61°C

Holding at AV2NE

TR	TURN	TIME	MIN ALT	DME LMT
176°	Left	1	3700	

* NO CIRCLING

AD ELEV 35
Bearings are Magnetic
Elevations in FEET AMSL



NOTES

CATEGORY	A	B	C	D
LNAV/VNAV		430 (398-2.2)		
LNAV		620 (585-3.3)		
CIRCLING*	660 (625-2.4)		760 (725-4.0)	830 (795-5.0)
ALTERNATE	(1125-4.4)		(1225-6.0)	(1295-7.0)

- * 1. NO CIRCLING WEST OF RWY 18/36.
- 2. HOLDING NOT CONTAINED WITHIN CTA.

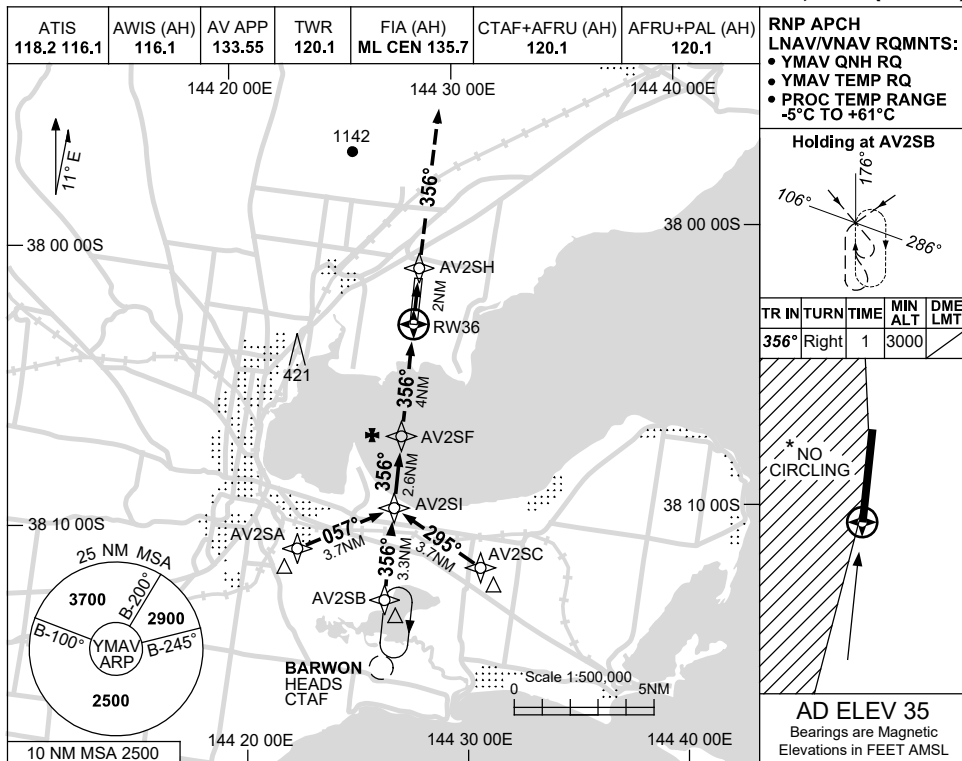
Changes: REVISED PROC, Editorial.

MAVGN01-177

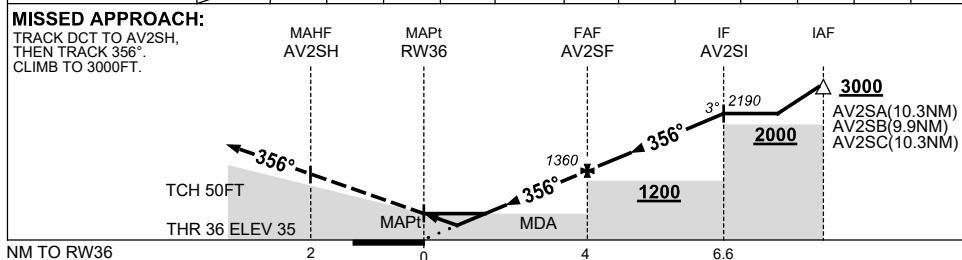
USE QNH

RNP Z RWY 36
AVALON, VIC (YMAV)

30 NOV 2023



NM TO NEXT WPT	RW36	0.9	1.5	2	3	AV2SF	1	2	AV2SI			
ALT (3° APCH PATH)		370	550	720	1040	1360	1680	2000	2190			



NOTES

CATEGORY	A	B	C	D
LNAV/VNAV		370 (335-1.9)		
LNAV		550 (515-2.9)		
CIRCLING *	660 (625-2.4)		760 (725-4.0)	830 (795-5.0)
ALTERNATE	(1125-4.4)		(1225-6.0)	(1295-7.0)

1. MAX IAS: INITIAL : 190KT.
- *2. NO CIRCLING WEST OF RWY 18/36.
3. HOLDING NOT CONTAINED WITHIN CTA.

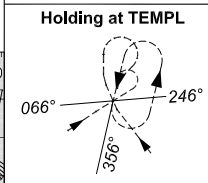
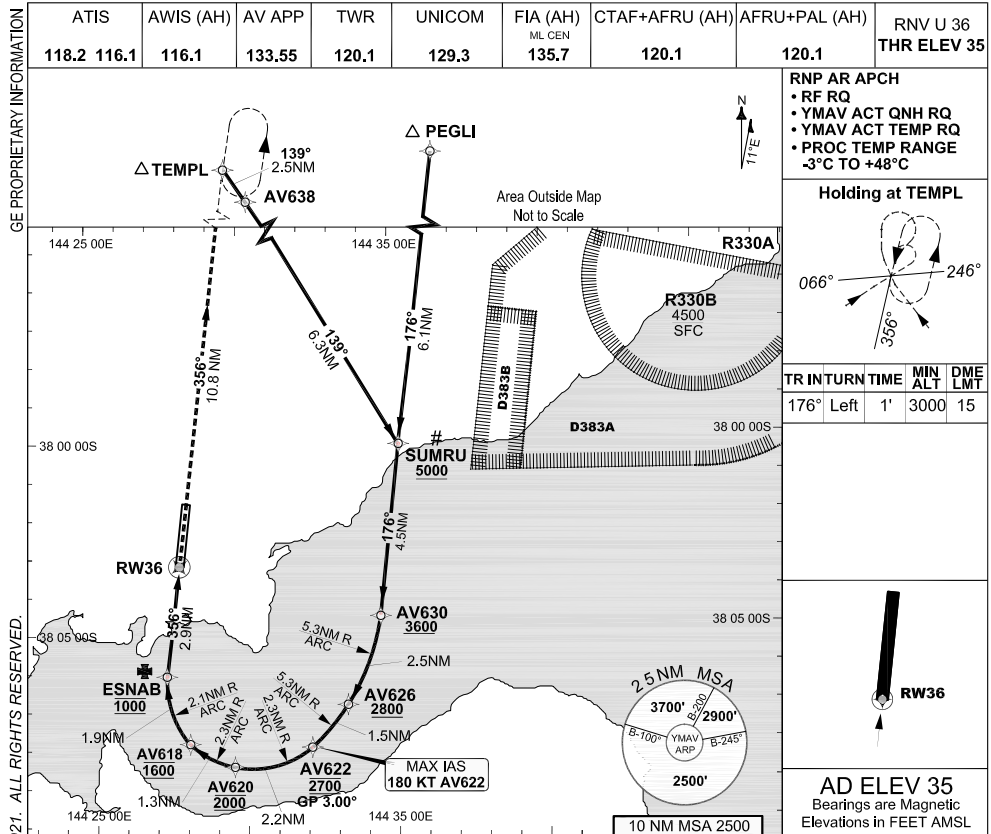
Changes: WPT NAMING CONVENTION, Editorial.

MAVGN02-177

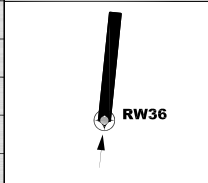
**FOR CASA APPROVED
OPERATORS ONLY
USE QNH**

RNP U RWY 36 (AR)
AVALON, VIC (YMAV)

24 MAR 2022

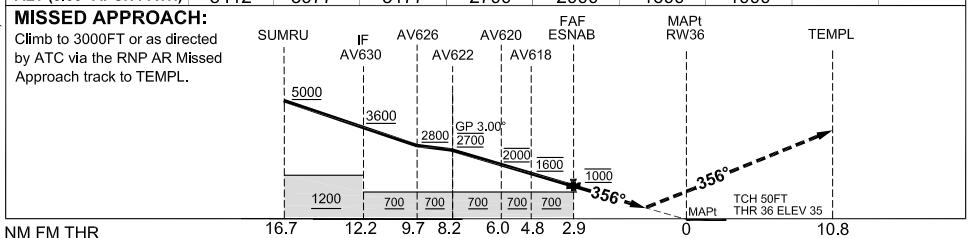


TR IN	TURN	TIME	MIN ALT	DME LMT
176°	Left	1'	3000	15



AD ELEV 35
 Bearings are Magnetic
 Elevations in FEET AMSL

	SUMRU	AV630	AV626	AV622	AV620	AV618	ESNAB
ALT (3.00° APCH PATH)	5412	3977	3177	2700	2000	1600	1000



NOTES

1. PAPI not coincident with VPA.
2. RNP 0.3 Required from AV638 TO ESNAB.
3. RNP 0.3 Required from PEGLI TO ESNAB.
4. Climb gradient of 4.5% to 3000FT required to reach TEMPL.
5. HLDG pattern not contained within CTA.
6. Latest Intercept Point (LIP)

CATEGORY	A	B	C	D
RNP (0.30)			DA(H) 428 (393 - 2.2)	DA(H) 428 (393 - 2.2)
RNP (0.15)			DA(H) 362 (327 - 1.8)	DA(H) 362 (327 - 1.8)
CIRCLING	N/A		NOT AUTHORISED	NOT AUTHORISED
ALTERNATE				

Changes: BRIEFING STRIP

MAVGN03-170

DO NOT USE FOR NAVIGATION

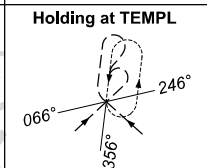
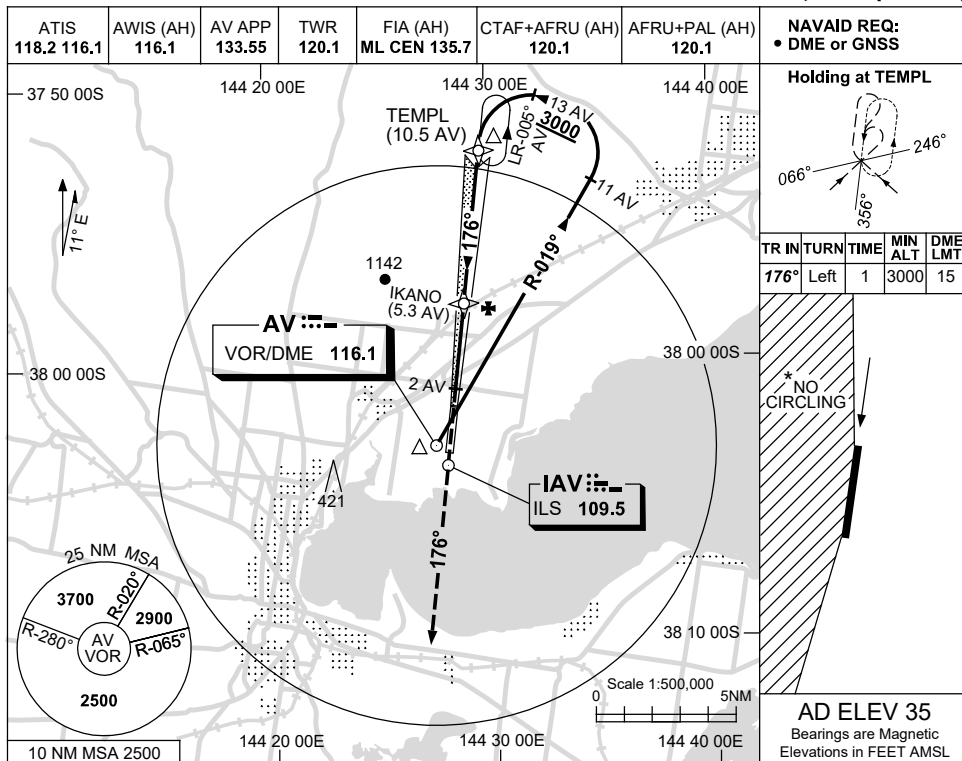
Prepared by GE Aviation - ICAO Doc 9905 Compliant



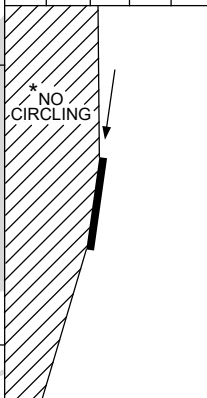
USE QNH

ILS-Y or LOC-Y RWY 18
AVALON, VIC (YMAV)

24 MAR 2022

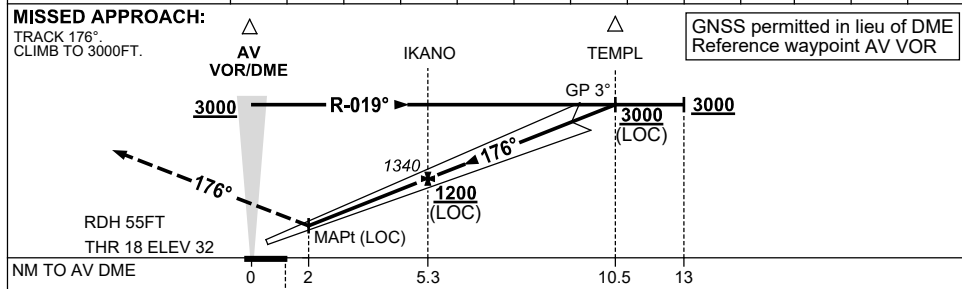


TR	IN	TURN	TIME	MIN	DME
176°	Left	1	3000	15	



AD ELEV 35
 Bearings are Magnetic
 Elevations in FEET AMSL

NM TO AV DME	3.1	4	5.3	6	7	8	8.9	9	10	10.5			
ALT (3° APCH PATH)	620	920	1340	1560	1880	2200	2500	2520	2840	3000			



NM TO AV DME	0	2	5.3	10.5	13
NM TO THR 18	0	0.6	3.9	9.1	

NOTES

- * 1. NO CIRCLING WEST OF RWY 18/36.
- 2. HLDG PATTERN NOT CONTAINED WITHIN CTA.

CATEGORY	A	B	C	D
S-I ILS		390 (358) 2.0 (VIS 1.5 WITH ACTUAL QNH)		
S-I LOC		620 (585-3.3)		
CIRCLING *	660 (625-2.4)	760 (725-4.0)	830 (795-5.0)	
ALTERNATE	(1125-4.4)	(1225-6.0)	(1295-7.0)	

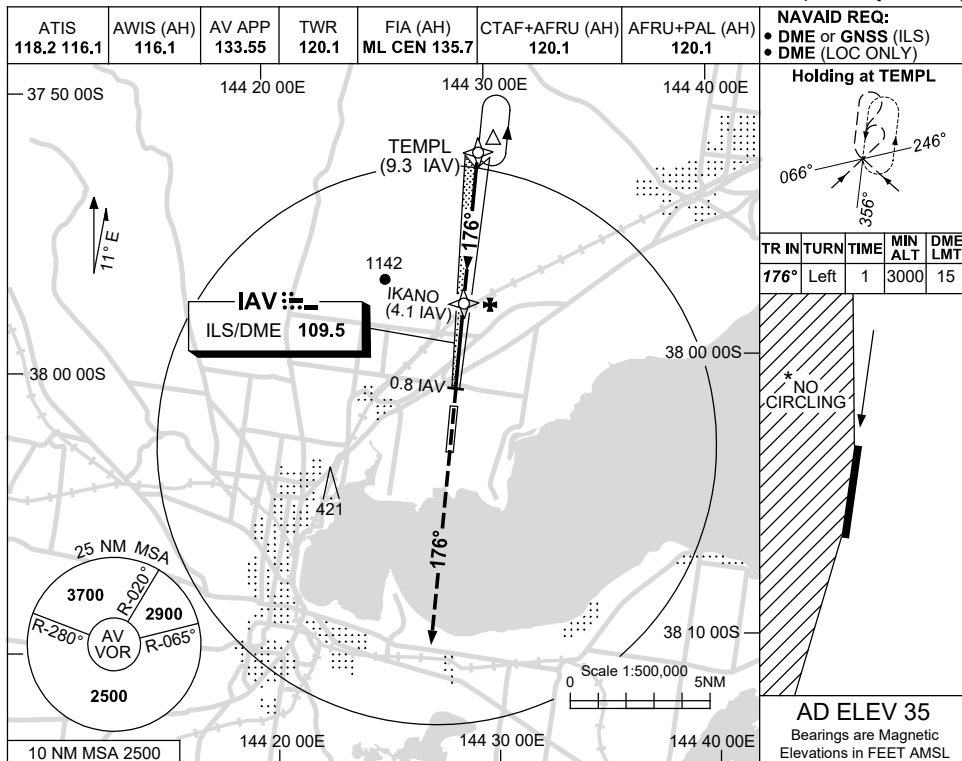
Changes: AWIS FREQ.

MAV/101-170

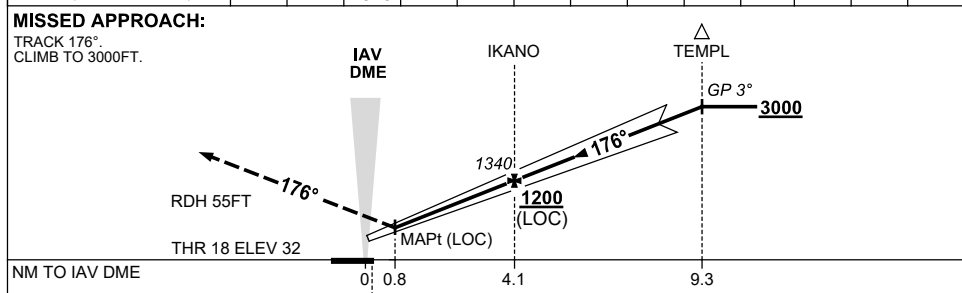
USE QNH

ILS-Z or LOC-Z RWY 18
AVALON, VIC (YMAV)

24 MAR 2022



NM TO IAV DME	1.9	3	4.1	5	6	7	8	9	9.3				
ALT (3° APCH PATH)	620	980	1340	1620	1940	2250	2570	2890	3000				



- NOTES**
- NO CIRCLING WEST OF RWY 18/36.
 - HLDG PATTERN NOT CONTAINED WITHIN CTA.

CATEGORY	A	B	C	D
S-I ILS		390 (358) 2.0 (VIS 1.5 WITH ACTUAL QNH)		
S-I LOC		620 (585-3.3)		
CIRCLING *	660 (625-2.4)		760 (725-4.0)	830 (795-5.0)
ALTERNATE	(1125-4.4)		(1225-6.0)	(1295-7.0)

Changes: AWIS FREQ.

MAVII02-170

NOISE ABATEMENT PROCEDURES AVALON

1. PREFERRED FLIGHT PATHS

- 1.1 Whenever possible, aircraft are to avoid the noise sensitive areas of Lara, Little River and Geelong Grammar School (Geelong Grammar is R 233 AV, 3NM, or 229 deg Mag 3.5NM from Avalon ARP).
- 1.2 Whenever possible, circuit training after 1100 UTC is to be conducted to the east of the airport.
- 1.3 If low level circuits are conducted to the west of the airport the downwind leg shall not be further than 4KM from the runway.

2. PREFERRED FLIGHT PATHS

- 2.1 Between the hours 1300 and 2000 UTC the preferred runways will be:

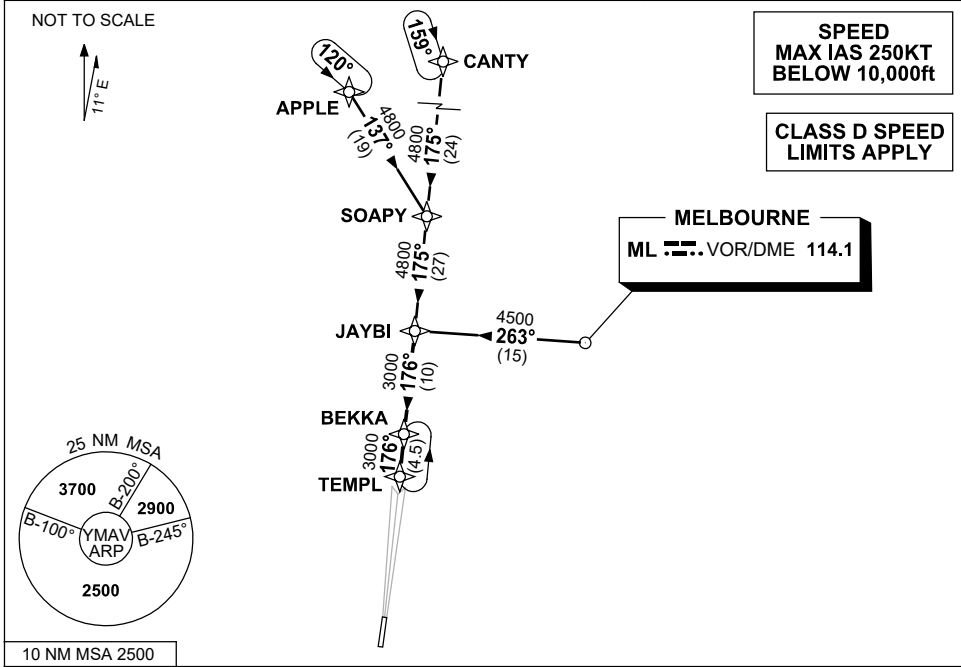
Landing - RWY 36

Take-off - RWY 18

**STANDARD INSTRUMENT ARRIVAL (STAR)
JAYBI FIVE ARRIVAL (RNAV)
AVALON, VIC (YMAV)**

24 MAR 2022

ATIS 118.2 116.1	AWIS (AH) 116.1	AV APP 133.55	TWR 120.1	FIA (AH) ML CEN 135.7	CTAF+AFRU (AH) 120.1	AFRU+PAL (AH) 120.1	Bearings are Magnetic Elevations in FEET AMSL
---------------------	--------------------	------------------	--------------	--------------------------	-------------------------	------------------------	--



TRANSITION:

CANTY: From CANTY to JAYBI:
Track 175° to SOAPY
Track 175° to JAYBI
Then follow ARRIVAL instruction

MELBOURNE: From ML VOR to JAYBI:
(ML VOR) Track 263° to JAYBI
Then follow ARRIVAL instruction

APPLE: From APPLE to JAYBI:
Track 137° to SOAPY
Track 175° to JAYBI
Then follow ARRIVAL instruction

ARRIVAL: JAYBI FIVE (RNAV):

RWY 18: From JAYBI:
• Track 176° to BEKKA
• Track 176° to TEMPL
• Intercept RWY 18 LOC

RWY 36: From JAYBI:
• Track 176° to BEKKA
• Track 176° to TEMPL
From TEMPL expect tracking instructions or radar vectors for final

COMMUNICATIONS FAILURE: PROCEDURE IN IMC

- Squawk 7600, comply with vertical navigation requirements, but not below MSA.
- Track via the latest STAR clearance to the nominated runway, then fly the most suitable approach in accordance with ERSA EMERG Section 1.5.

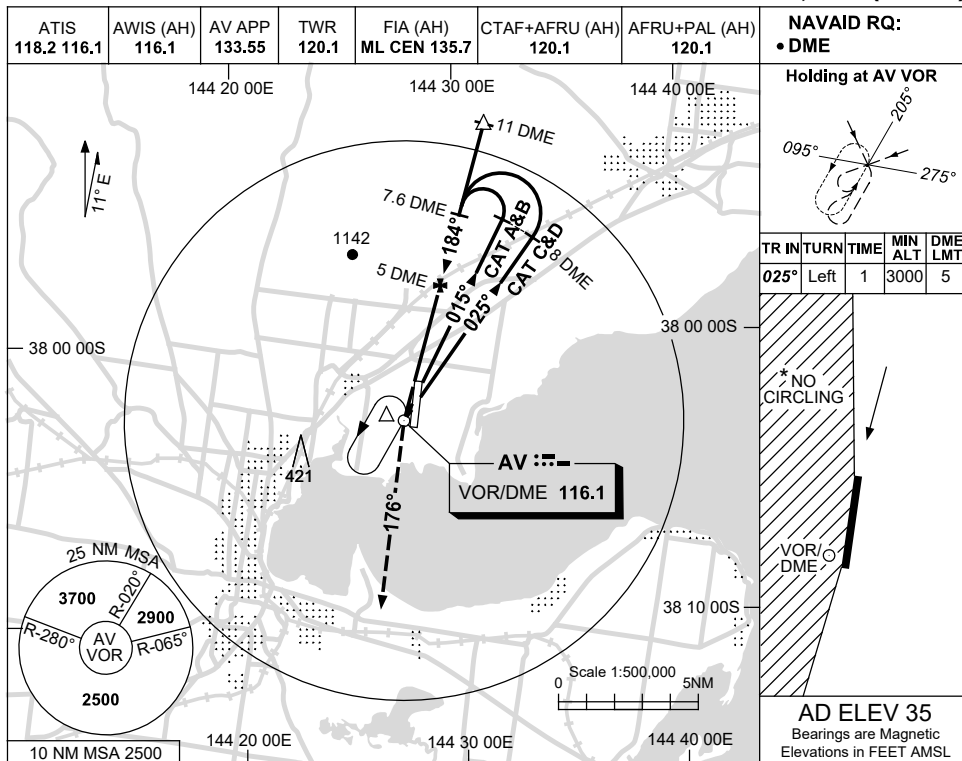
Changes: AWIS FREQ.

MAVSR01-170

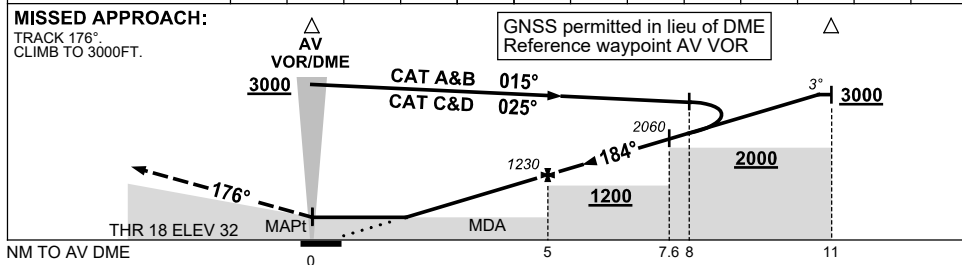
USE QNH

VOR RWY 18
AVALON, VIC (YMAV)

24 MAR 2022



DIST TO AV DME	3	4	5	6	7	7.6	8	9	10	10.6		
ALT (3° APCH PATH)	620	910	1230	1550	1870	2060	2190	2500	2820	3000		



NOTES

CATEGORY	A	B	C	D
S-I VOR/DME	620 (585-3.3)			
CIRCLING *	660 (625-2.4)		760 (725-4.0)	830 (795-5.0)
ALTERNATE	(1125-4.4)		(1225-6.0)	(1295-7.0)

1. MAX IAS:
INITIAL : 200KT.
- * 2. NO CIRCLING WEST OF RWY 18/36.
3. HLDG PATTERN NOT CONTAINED WITHIN CTA.

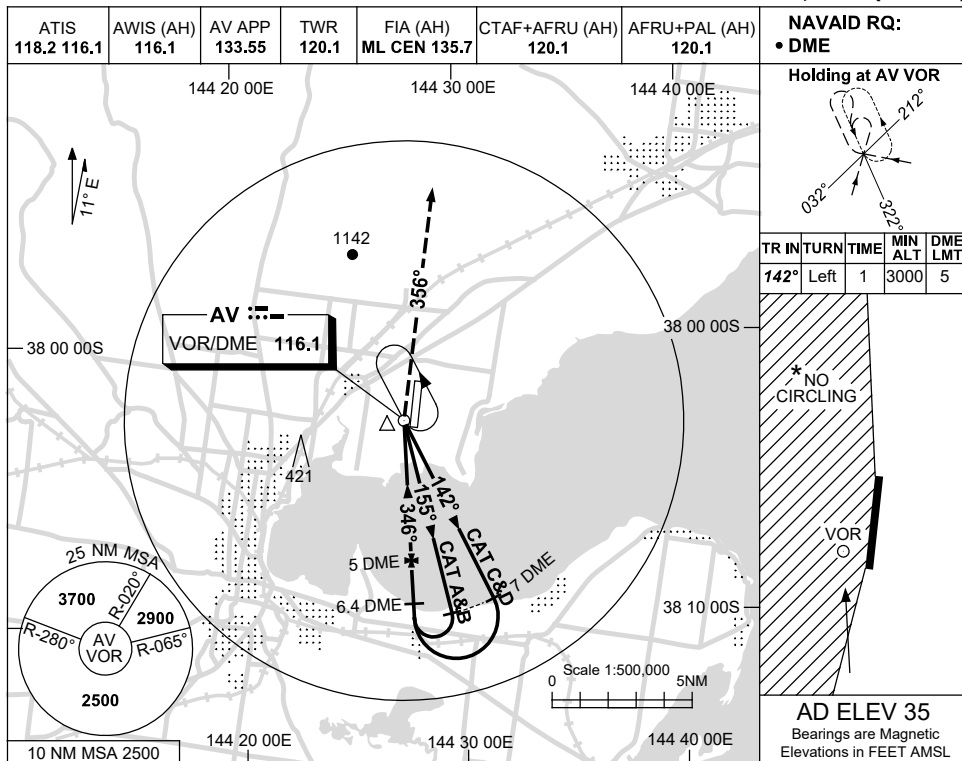
Changes: AWIS FREQ.

MAVVO01-170

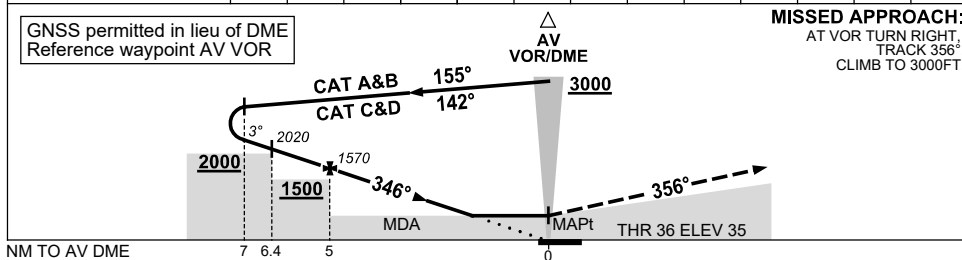
USE QNH

VOR RWY 36
AVALON, VIC (YMAV)

24 MAR 2022



DIST TO AV DME	7	6.4	6	5	4	3	2	1.8				
ALT (3° APCH PATH)	2210	2020	1890	1570	1250	930	610	570				



MISSED APPROACH:
 AT VOR TURN RIGHT,
 TRACK 356°.
 CLIMB TO 3000FT.

NM TO AV DME

CATEGORY	A	B	C	D
S-I VOR/DME	570 (535-3.0)			
CIRCLING *	660 (625-2.4)	760 (725-4.0)	830 (795-5.0)	
ALTERNATE	(1125-4.4)	(1225-6.0)	(1295-7.0)	

- NOTES**
- MAX IAS:
INITIAL : 200KT.
 - NO CIRCLING WEST OF RWY 18/36.
 - HLDG PATTERN NOT CONTAINED WITHIN CTA.

Changes: AWIS FREQ.

MAVVO03-170