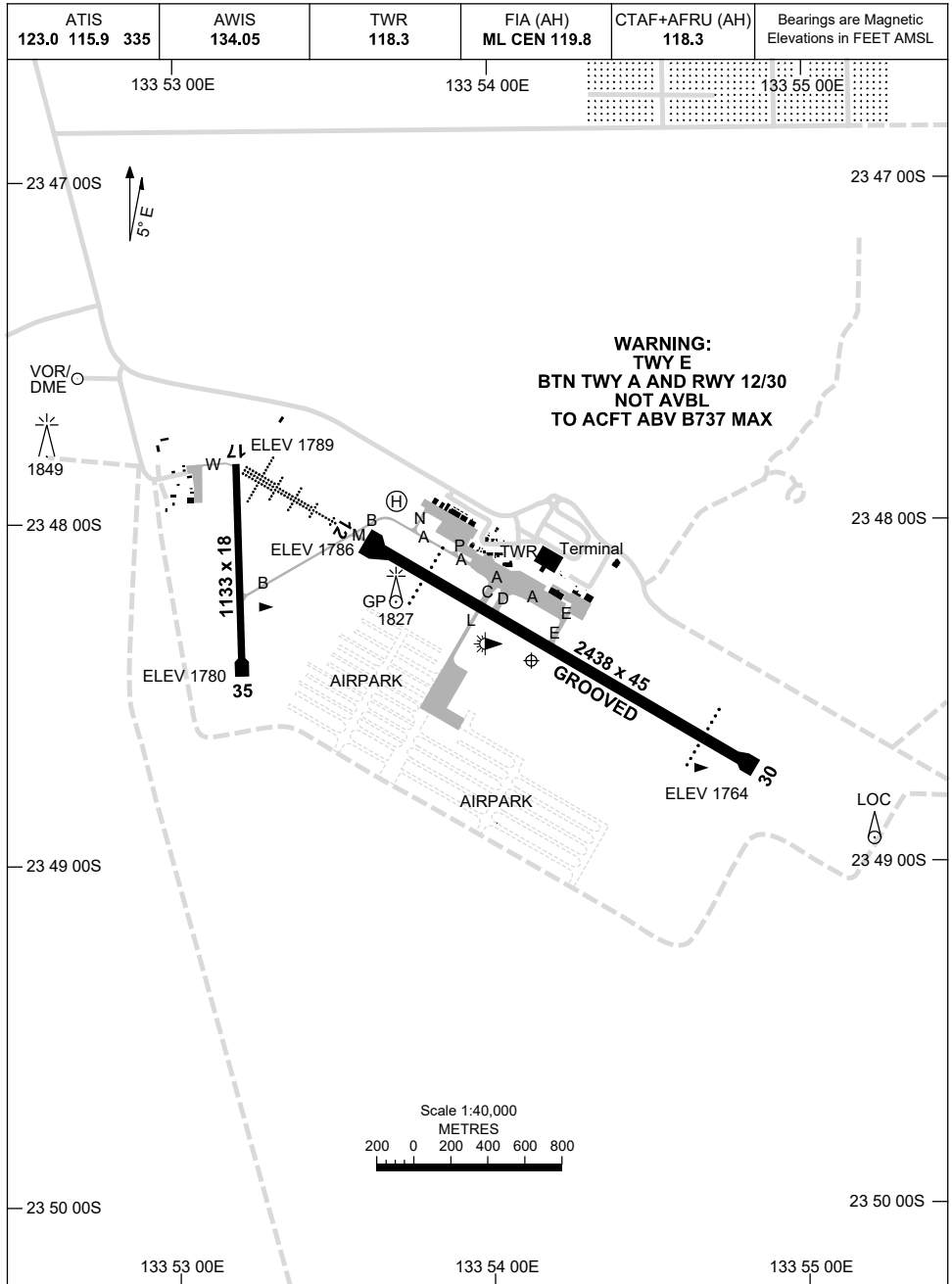


20 MAR 2025

AD ELEV 1789  
23 48 24S 133 54 08E

AERODROME CHART - Page 1  
**ALICE SPRINGS, NT (YBAS)**



Changes: ARP COORDINATE CORRECTION.

BASAD01-182

20 MAR 2025

AD ELEV 1789  
23 48 24S 133 54 08E

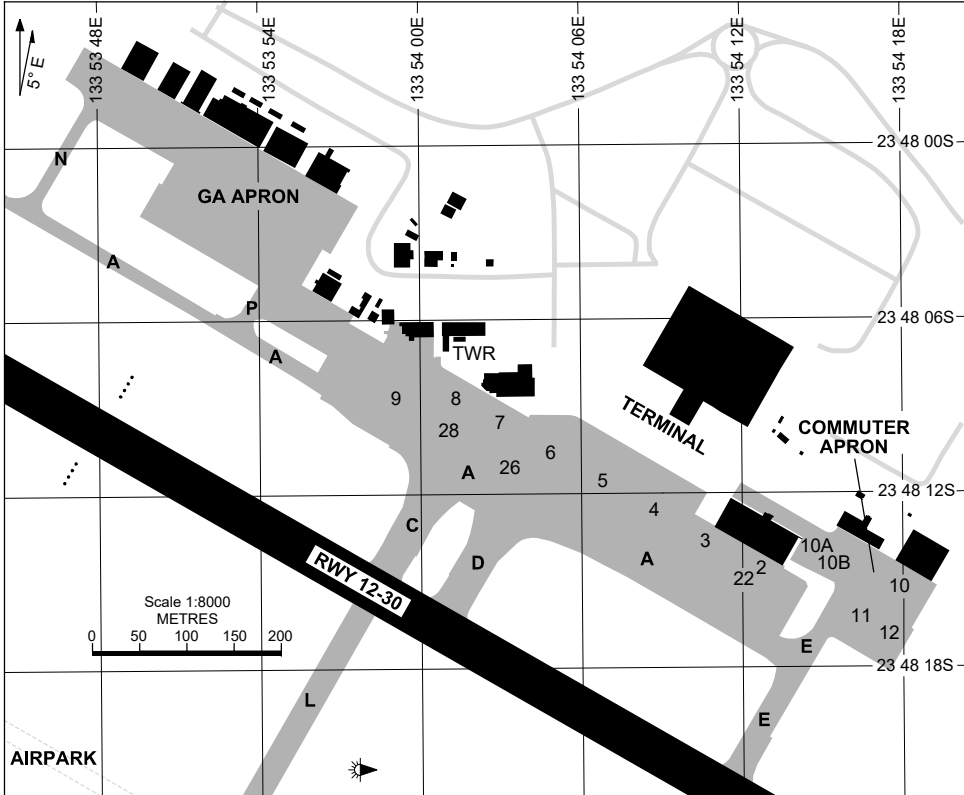
AERODROME CHART - Page 2  
**ALICE SPRINGS, NT (YBAS)**

ATIS 123.0 115.9 335	AWIS 134.05	TWR 118.3	FIA (AH) ML CEN 119.8	CTAF+AFRU (AH) 118.3	Bearings are Magnetic Elevations in FEET AMSL
<b>AERODROME LIGHTING</b>					
<b>RWY</b>	TAXIWAY : SOLAR TWY B, M. BLUE REFLECTIVE EDGE TWY A, B (BTN M AND RPT APRON), RL : MAN , SDBY (15 SEC)				
<b>12</b> <sup>116</sup> 296 <b>30</b>	PAPI 3.0° 49FT MIRL HIRL HIAL-CAT I PTBL PAPI 3.0° 49FT MIRL PTBL				
<b>17</b> <sup>174</sup> 354 <b>35</b>	PTBL PTBL				

**NOTES**

1. RWY 17/35 PTBL - SOLAR LIGHTING FOR HN AND EMERG OPR ONLY.

28 NOV 2024



PARKING POSITION INFORMATION

STAND	CO-ORDINATES		ELEV (ft)	CAPACITY	HYDRANT FUEL	DOCKING SYSTEM
2	23 48 14.06S	133 54 12.59E	1778	B738/A320	NIL	MARSHALLED
3	23 48 13.03S	133 54 10.66E	1777	B738/A320	NIL	MARSHALLED
4	23 48 12.00S	133 54 08.74E	1777	B738/A320	NIL	MARSHALLED
5	23 48 10.96S	133 54 06.82E	1777	B738/A320	NIL	MARSHALLED
6	23 48 09.93S	133 54 04.90E	1780	B738/A320	NIL	MARSHALLED
7	23 48 08.90S	133 54 02.97E	1781	B738/A320	NIL	MARSHALLED
8	23 48 08.05S	133 54 01.40E	1781	E190	NIL	MARSHALLED
9	23 48 08.04S	133 53 59.12E	1781	B772/B763	NIL	MARSHALLED
10	23 48 14.66S	133 54 17.89E	1776	DH8C	NIL	MARSHALLED
10A	23 48 13.23S	133 54 14.49E	1777	SW4	NIL	MARSHALLED
10B	23 48 13.53S	133 54 15.11E	1777	SW4	NIL	MARSHALLED
11	23 48 15.69S	133 54 16.50E	1774	DH8C/FA7X	NIL	MARSHALLED
12	23 48 16.24S	133 54 17.54E	1774	DH8C/FA7X	NIL	MARSHALLED
22	23 48 14.37S	133 54 12.24E	1777	B738/A320	NIL	MARSHALLED
26	23 48 10.48S	133 54 03.35E	1779	A380/B744	NIL	MARSHALLED
28	23 48 09.26S	133 54 01.08E	1780	A380/B744	NIL	MARSHALLED

NOTE: SOME SECONDARY BAYS OBSTRUCT PRIMARY BAYS.

# DME or GNSS ARRIVAL PROCEDURES ALICE SPRINGS, NT (YBAS)

28 FEB 2019

ATIS 123.0 115.9 335	AWIS 134.05	TWR 118.3	FIA (AH) ML CEN 119.8	CTAF+AFRU (AH) 118.3	Bearings are Magnetic Elevations in FEET AMSL
-------------------------	----------------	--------------	--------------------------	-------------------------	--

25 NM MSA  
5200  
AS VOR or NDB

**DME USING AS DME  
REFERENCE WAYPOINT AS VOR**

AS NDB 335  
AS VOR/DME 115.9  
\* NO CIRCLING N OF RWY 12/30 BEYOND 3NM.  
AD ELEV 1789

10 NM MSA 4300

**SECTOR A**

AS VOR or NDB

VOR or NDB  
3°  
5200  
5000  
3800  
4550  
MDA  
MAPt  
210°  
5200

**MISSED APPROACH:**  
TRACK 210° AS VOR OR NDB, CLIMB TO 5200FT.

NM TO AS VOR	25	17	15	8	5	0													
<b>CIRCLING MINIMA</b>				<b>A,B: 3800-2.4</b>	<b>C: 3800-4.0</b>		<b>D: 3800-5.0</b>												
NM TO AS VOR	7.1	6	5	4	3	2.7													
ALT (3° APCH PATH)	5200	4860	4550	4230	3910	3800													

**SECTOR B**

AS VOR or NDB

VOR or NDB  
3°  
5200  
5000  
4000  
4640  
4000  
MDA  
MAPt  
310°  
5200

**MISSED APPROACH:**  
TRACK 310° AS VOR OR NDB, CLIMB TO 5200FT.

NM TO AS VOR	25	17		12	7	5	0												
<b>CIRCLING MINIMA</b>				<b>A,B: 2870-2.4</b>	<b>C: 3300-4.0</b>		<b>D: 3400-5.0</b>												
NM TO AS VOR	8.8	8	7	6	5	4	3.1	2.8	2	1.4									
ALT (3° APCH PATH)	5200	4960	4640	4320	4000	3680	3400	3300	3040	2870									

**SECTOR C**

AS VOR or NDB

VOR or NDB  
3°  
5200  
5000  
4000  
4000  
MDA  
MAPt  
210°  
5200

**MISSED APPROACH:**  
TRACK 210° AS VOR OR NDB, CLIMB TO 5200FT.

NM TO AS VOR	25	17	15	12	5	0													
<b>CIRCLING MINIMA</b>				<b>A,B: 3160-2.4</b>	<b>C: 3300-4.0</b>		<b>D: 3400-5.0</b>												
NM TO AS VOR	8.8	8	7	6	5	4	3.1	3	2.8	2.4									
ALT (3° APCH PATH)	5200	4960	4640	4320	4000	3680	3400	3360	3300	3160									

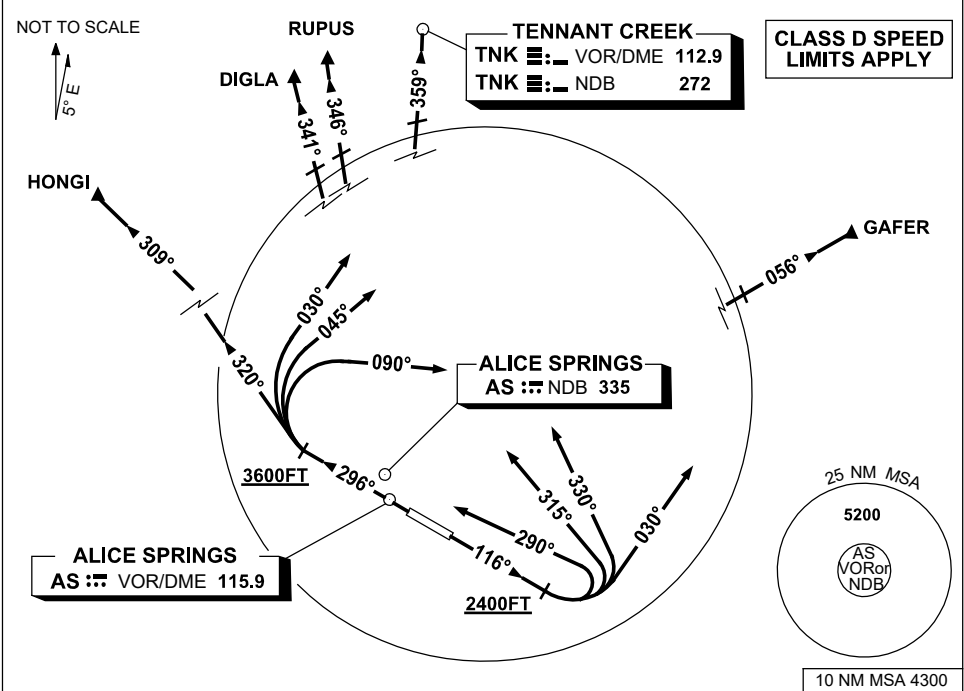
Changes: SECTOR B MNM, SECTOR C MNM, Editorial.

BASDG01-158

**STANDARD INSTRUMENT DEPARTURES (SID)  
RWY 12/30 NORTH  
ALICE SPRINGS, NT (YBAS)**

**30 NOV 2023**

ATIS 123.0 115.9 335	AWIS 134.05	TWR 118.3	FIA (AH) ML CEN 119.8	CTAF+AFRU (AH) 118.3	Bearings are Magnetic Elevations in FEET AMSL
-------------------------	----------------	--------------	--------------------------	-------------------------	--



<p><b>DIGLA</b> <b>RUPUS</b> <b>TENNANT CREEK (TNK)</b> THREE DEPARTURE</p> <p><b>ALICE SPRINGS</b> ONE DEPARTURE</p> <p><b>TENNANT CREEK (TNK)</b> THREE DEPARTURE</p> <p><b>RWY 30</b> GRAD 3.8% TO 3600ft THENCE 3.3%</p> <ul style="list-style-type: none"> <li>Track 296°</li> <li>At or ABV 3600ft but not before abeam AS VOR or AS NDB turn RIGHT</li> </ul> <p>For HONGI</p> <ul style="list-style-type: none"> <li>Track 320°</li> <li>Intercept cleared route</li> </ul> <p>For DIGLA and RUPUS</p> <ul style="list-style-type: none"> <li>Track 030°</li> <li>Intercept cleared route</li> </ul> <p>For TNK</p> <ul style="list-style-type: none"> <li>Track 045°</li> <li>Intercept cleared route</li> </ul> <p>For GAFER</p> <ul style="list-style-type: none"> <li>Track 090°</li> <li>Intercept cleared route</li> </ul>	<p><b>GAFER</b> THREE DEPARTURE <b>HONGI</b> THREE DEPARTURE</p> <p><b>RWY 12</b> GRAD 3.3%</p> <ul style="list-style-type: none"> <li>Track 116°</li> <li>At or ABV 2400ft turn LEFT</li> </ul> <p>For HONGI</p> <ul style="list-style-type: none"> <li>Track 290°</li> <li>Intercept cleared route</li> </ul> <p>For DIGLA and RUPUS</p> <ul style="list-style-type: none"> <li>Track 315°</li> <li>Intercept cleared route</li> </ul> <p>For TNK</p> <ul style="list-style-type: none"> <li>Track 330°</li> <li>Intercept cleared route</li> </ul> <p>For GAFER</p> <ul style="list-style-type: none"> <li>Track 030°</li> <li>Intercept cleared route</li> </ul>
--	--

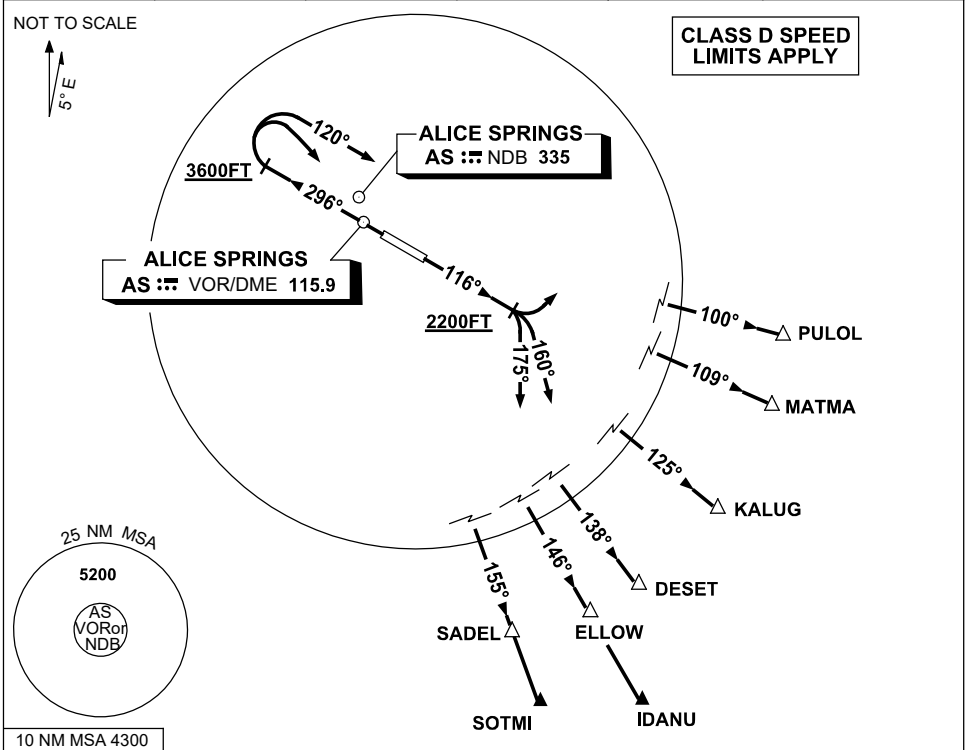
Changes: RUPUS REPLACES SCOTI, Editorial.

BASDP01-177

**STANDARD INSTRUMENT DEPARTURES (SID)  
RWY 12/30 SOUTH EAST  
ALICE SPRINGS, NT (YBAS)**

**30 NOV 2023**

ATIS 123.0 115.9 335	AWIS 134.05	TWR 118.3	FIA (AH) ML CEN 119.8	CTAF+AFRU (AH) 118.3	Bearings are Magnetic Elevations in FEET AMSL
-------------------------	----------------	--------------	--------------------------	-------------------------	--



<p><b>PULOL THREE DEPARTURE</b> <b>MATMA ONE DEPARTURE</b> <b>KALUG THREE DEPARTURE</b> <b>SADEL FOUR DEPARTURE</b></p> <p><b>RWY 30</b> GRAD 3.8% TO 3600ft THENCE 3.3%</p> <ul style="list-style-type: none"> <li>Track 296°</li> <li>At or ABV 3600ft but not before abeam AS VOR or NDB turn RIGHT</li> </ul> <p>For PULOL and MATMA</p> <ul style="list-style-type: none"> <li>Track 120°</li> <li>Intercept cleared route</li> </ul> <p>For KALUG, DESET, IDANU, ELLOW, SADEL and SOTMI</p> <ul style="list-style-type: none"> <li>Track DCT to AS VOR or AS NDB</li> <li>Overhead AS VOR or AS NDB</li> <li>Intercept cleared route</li> </ul>	<p><b>IDANU THREE DEPARTURE</b> <b>DESET FOUR DEPARTURE</b> <b>ELLOW THREE DEPARTURE</b> <b>SOTMI ONE DEPARTURE</b></p> <p><b>RWY 12</b> GRAD 3.3%</p> <ul style="list-style-type: none"> <li>Track 116°</li> <li>At or ABV 2200ft</li> </ul> <p>For PULOL and MATMA</p> <ul style="list-style-type: none"> <li>Turn LEFT</li> <li>Intercept cleared route</li> </ul> <p>For KALUG, DESET and IDANU</p> <ul style="list-style-type: none"> <li>Turn RIGHT</li> <li>Track 160°</li> <li>Intercept cleared route</li> </ul> <p>For ELLOW, SADEL and SOTMI</p> <ul style="list-style-type: none"> <li>Turn RIGHT</li> <li>Track 175°</li> <li>Intercept cleared route</li> </ul>
---	---

Changes: SOTMI REPLACES SARAH, MATMA REPLACES STEEL, Editorial. BASDP02-177

STANDARD INSTRUMENT DEPARTURES (SID)  
RWY 12/30 WEST (RNAV)  
**ALICE SPRINGS, NT (YBAS)**

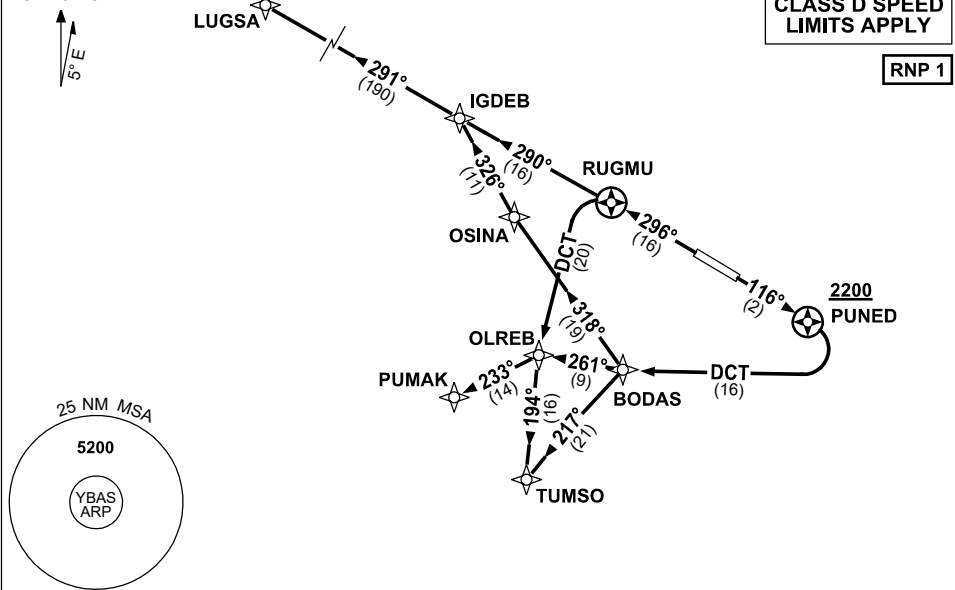
30 NOV 2023

ATIS 123.0 115.9 335	AWIS 134.05	TWR 118.3	FIA (AH) ML CEN 119.8	CTAF+AFRU (AH) 118.3	Bearings are Magnetic Elevations in FEET AMSL
-------------------------	----------------	--------------	--------------------------	-------------------------	--

NOT TO SCALE

**CLASS D SPEED  
LIMITS APPLY**

**RNP 1**



**TUMSO ONE DEPARTURE**  
**PUMAK ONE DEPARTURE**  
**LUGSA ONE DEPARTURE**

**RWY 30**

GRAD 3.9% TO 3300ft thence 3.3%

- Track 296° to RUGMU

**FROM RUGMU**

For LUGSA

- Track 290° to IGDEB
- Track 291° to LUGSA, thence as cleared

For PUMAK

- Turn LEFT, track DCT to OLREB
- Turn RIGHT, track 233° to PUMAK, thence as cleared

For TUMSO

- Turn LEFT, track DCT to OLREB,
- Track 194° to TUMSO, thence as cleared

**RWY 12**

GRAD 3.3%

- Track 116° to PUNED

**Cross PUNED AT or ABV 2200FT**

- Turn RIGHT, track DCT to BODAS

**FROM BODAS**

For TUMSO

- Turn LEFT, track 217° to TUMSO thence as cleared

For PUMAK

- Track 261° to OLREB
- Turn LEFT, track 233° to PUMAK, thence as cleared

For LUGSA

- Turn RIGHT, track 318° to OSINA
- Turn RIGHT, track 326° to IGDEB,
- Turn LEFT, track 291° to LUGSA, thence as cleared

Changes: LUGSA REPLACES LEESA, Editorial.

BASDP03-177

**FOR CASA APPROVED OPERATORS ONLY  
USE QNH**

MUDMO ONE DEPARTURE  
**ALICE SPRINGS, NT (YBAS)**

**21 MAR 2024**

Apt Elev	Trans ALT	ATIS	AWIS	TWR	FIA (AH)	CTAF + AFRU (AH)
1789'	10000'	123.0 115.9 335	134.05	118.3	ML CEN 119.8	118.3
<b>MUDMO ONE RNAV (RNP) DEPARTURE RNP 0.30 (MUDMO1.MUDMO) RWY 12</b>		Minimum climb gradient (All Engines) 5.4% to 2800FT.				

**TAKE-OFF:**

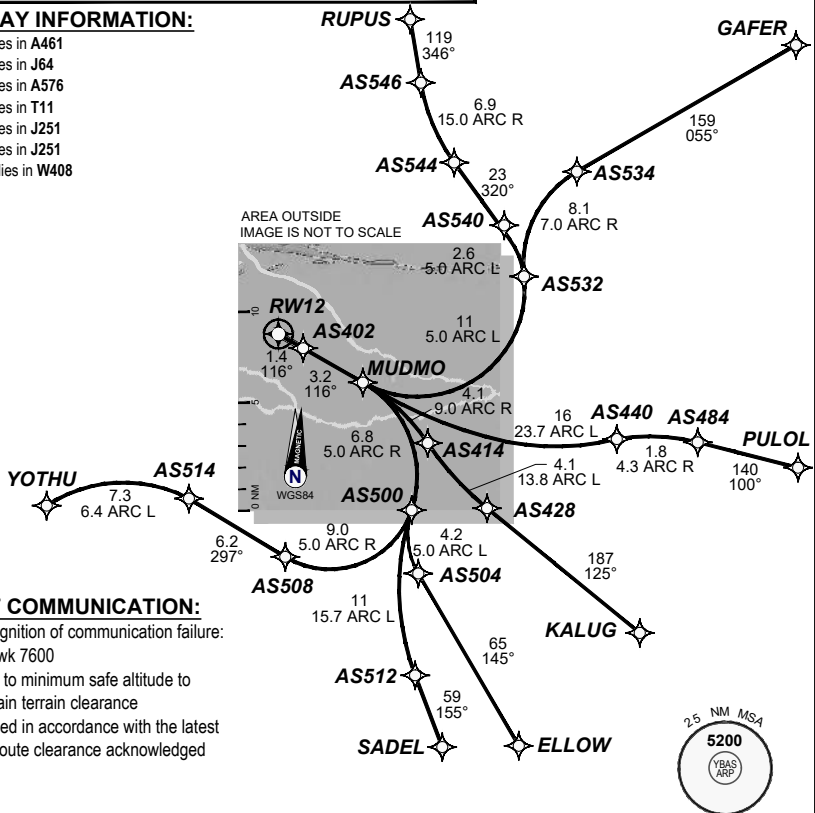
RWY 12: Fly the RNAV (RNP) track to **MUDMO**. Thence:

**TRANSITIONS:**

- (MUDMO1.ELLOW): Fly the RNAV (RNP) track to **ELLOW**.
- (MUDMO1.GAFER): Fly the RNAV (RNP) track to **GAFER**.
- (MUDMO1.KALUG): Fly the RNAV (RNP) track to **KALUG**.
- (MUDMO1.PULOL): Fly the RNAV (RNP) track to **PULOL**.
- (MUDMO1.SADEL): Fly the RNAV (RNP) track to **SADEL**.
- (MUDMO1.RUPUS): Fly the RNAV (RNP) track to **RUPUS**.
- (MUDMO1.YOTHU): Fly the RNAV (RNP) track to **YOTHU**.

**AIRWAY INFORMATION:**

- AS504 lies in A461
- AS534 lies in J64
- AS428 lies in A576
- AS484 lies in T11
- AS512 lies in J251
- AS546 lies in J251
- YOTHU lies in W408



**LOST COMMUNICATION:**

- On recognition of communication failure:
- Squawk 7600
  - Climb to minimum safe altitude to maintain terrain clearance
  - Proceed in accordance with the latest ATC route clearance acknowledged

**DO NOT USE FOR NAVIGATION**

Prepared by GE Aviation





**FOR CASA APPROVED OPERATORS ONLY**  
**USE QNH**                      **OCTAV SIX DEPARTURE**  
**ALICE SPRINGS, NT (YBAS)**

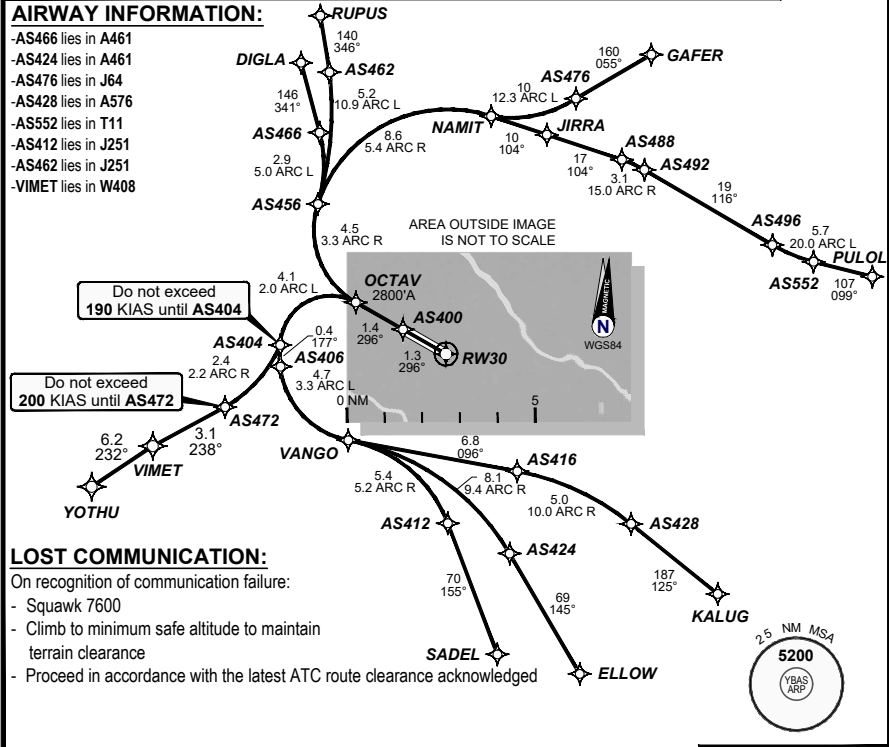
**21 MAR 2024**

Apt Elev	Trans ALT	ATIS	AWIS	TWR	FIA (AH)	CTAF + AFRU (AH)
1789'	10000'	123.0 115.9 335	134.05	118.3	ML CEN 119.8	118.3

<b>OCTAV SIX</b> <b>RNAV (RNP) DEPARTURE</b> <b>RNP 0.30</b> <b>(OCTAV6.OCTAV)</b> <b>RWY 30</b>	Minimum climb gradient (All Engines) 11.6% to 2800FT.

**TAKE-OFF:**  
**RWY 30:** Fly the RNAV (RNP) track to **OCTAV** and cross **OCTAV** at or above **2800'**. Thence:

**TRANSITIONS:**  
**(OCTAV6.DIGLA):** Fly the RNAV (RNP) track to **DIGLA**.  
**(OCTAV6.ELLOW):** Fly the RNAV (RNP) track to **ELLOW**. Do not exceed **190 KIAS** until **AS404**.  
**(OCTAV6.GAFER):** Fly the RNAV (RNP) track to **GAFER**.  
**(OCTAV6.KALUG):** Fly the RNAV (RNP) track to **KALUG**. Do not exceed **190 KIAS** until **AS404**.  
**(OCTAV6.PULOL):** Fly the RNAV (RNP) track to **PULOL**.  
**(OCTAV6.SADEL):** Fly the RNAV (RNP) track to **SADEL**. Do not exceed **190 KIAS** until **AS404**.  
**(OCTAV6.RUPUS):** Fly the RNAV (RNP) track to **RUPUS**.  
**(OCTAV6.YOTHU):** Fly the RNAV (RNP) track to **YOTHU**. Do not exceed **190 KIAS** until **AS404**.  
 Do not exceed **200 KIAS** until **AS472**.



202310241855COPYRIGHT 2023 GE, USA, GE PROPRIETARY INFORMATION 10 NM MSA 4300

Changes: from SUP H81/23 BASDP05-178

**DO NOT USE FOR NAVIGATION**

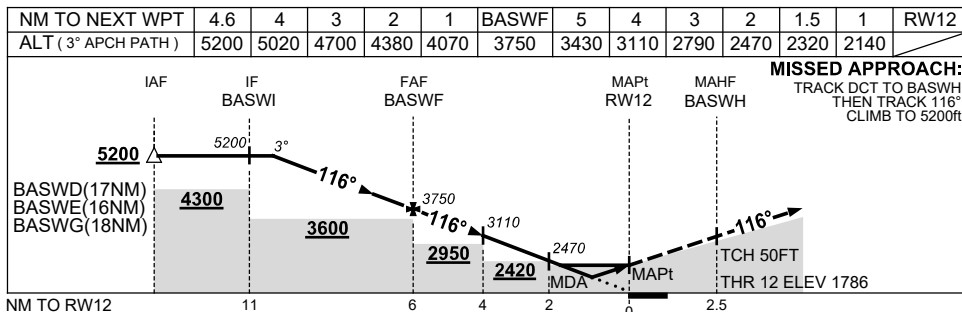
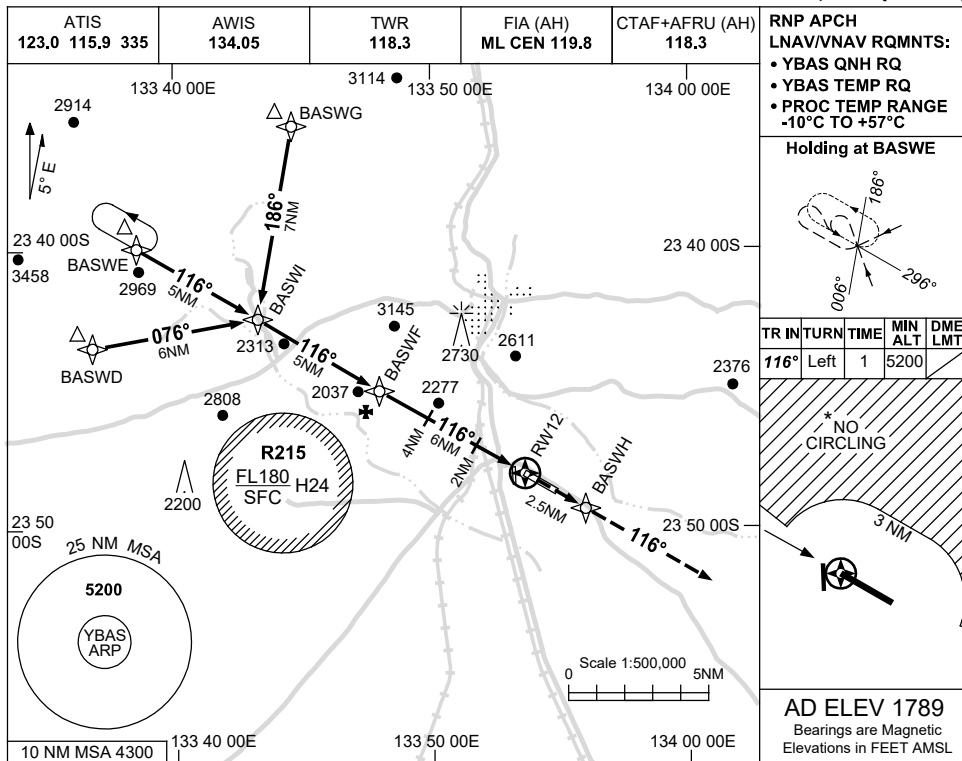


USE QNH

RNP Z RWY 12

**ALICE SPRINGS, NT (YBAS)**

13 JUN 2024



**NOTES**

CATEGORY	A	B	C	D
LNAV/VNAV		2140 (354-1.1)		
LNAV		2320 (531-2.1)		
CIRCLING *	2570 (781-2.4)		2990 (1201-4.0)	2990 (1201-5.0)
ALTERNATE	(1281-4.4)		(1701-6.0)	(1701-7.0)

\* 1. NO CIRCLING NORTH OF RWY 12/30 BEYOND 3NM.  
2. CTA CONTAINMENT NOT ASSURED WHEN HOLDING AT OR BLW 6500FT.

Changes: NOTE 2.

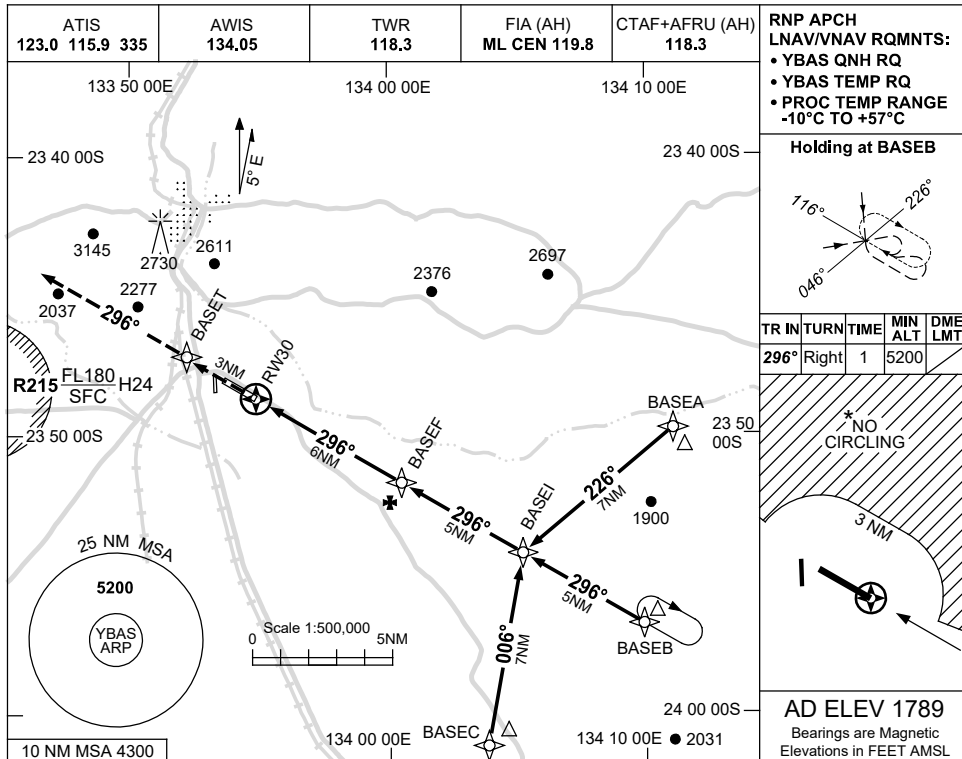
BASGN01-179

USE QNH

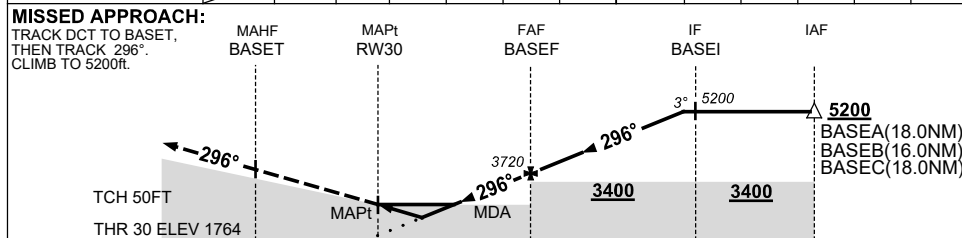
RNP Z RWY 30

**ALICE SPRINGS, NT (YBAS)**

13 JUN 2024



NM TO NEXT WPT	RW30	0.9	1.4	2	3	4	5	BASEF	1	2	3	4	4.6
ALT (3° APCH PATH)		2090	2260	2450	2770	3090	3410	3720	4040	4360	4680	5000	5200



**NOTES**

CATEGORY	A	B	C	D
LNAV/VNAV		2090 (326-1.8)		
LNAV		2260 (496-2.8)		
CIRCLING *	2570 (781-2.4)		2990 (1201-4.0)	2990 (1201-5.0)
ALTERNATE	(1281-4.4)		(1701-6.0)	(1701-7.0)

\* 1. NO CIRCLING NORTH OF RWY 12/30 BEYOND 3NM.

\* 2. CTA CONTAINMENT NOT ASSURED WHEN HOLDING AT OR BLW 6500FT.

Changes: NOTE 2.

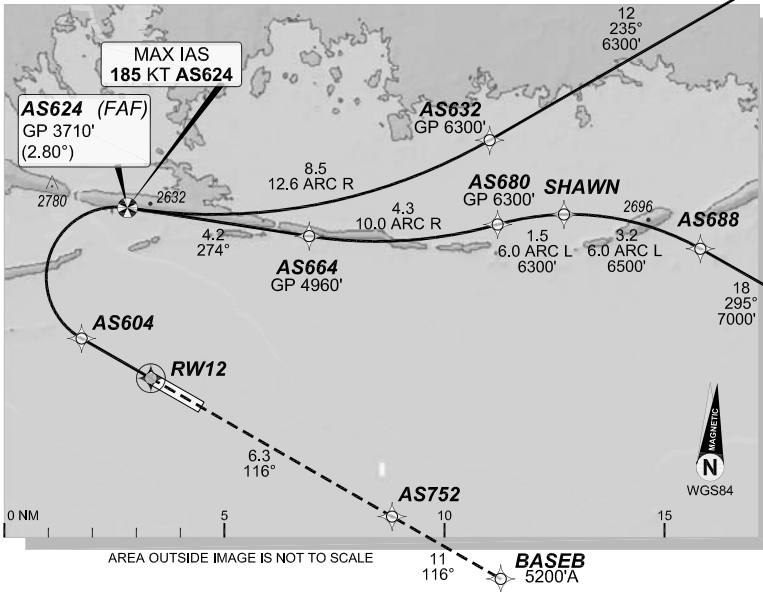
BASGN02-179

1 DEC 2022

ALICE SPRINGS, NT (YBAS)

GE PROPRIETARY INFORMATION

ATIS <b>123.0 115.9 335</b>			AWIS <b>134.05</b>		TWR <b>118.3</b>	FIA (AH) <b>ML CEN 119.8</b>	CTAF + AFRU (AH) <b>118.3</b>
RNP AR <b>RNV M 12</b>		Apt Elev. <b>1789'</b> TDZE <b>1786'</b>	AS624 (FAF) <b>GP 3710' (2.80°)</b>		Trans Level <b>FL110</b>		

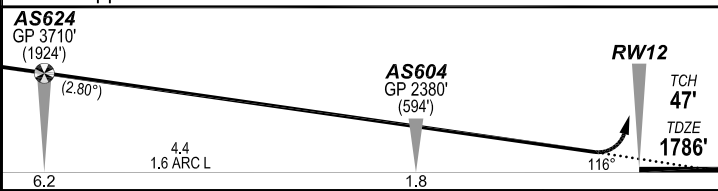


AREA OUTSIDE IMAGE IS NOT TO SCALE

AREA OUTSIDE IMAGE IS NOT TO SCALE

**MISSED APPROACH:**

Climb to **5200'** via the RNP AR  
Missed Approach track to **BASEB**.



**NOTES:**

- YBAS ACT QNH RQ.
- Minimum MAP gradient (All Engines) 3.0% to 5200FT.
- APCH Path does not coincide with PAPI glide path 3°.

AS624 GP 3710' (1924') (2.80°)		AS604 GP 2380' (594')		RWY 12 TCH 47' TDZE 1786'	
6.2		4.4 1.6 ARC L		1.8	
				RNP <b>0.30</b>	
				DA(H) <b>2104'</b> (318')	
				HIALS OUT	
C	C	C	C	800 m	1700 m



10 NM MSA 4300

**FOR CASA APPROVED OPERATORS ONLY**

Changes: PROC NAME, SPEED NOTE AS624, RNAV (RNP) TO RNP AR.

**DO NOT USE FOR NAVIGATION**

Prepared by GE Aviation

BASGN03-173

202208021123COPYRIGHT 2022 NAVERUS, INC. USA



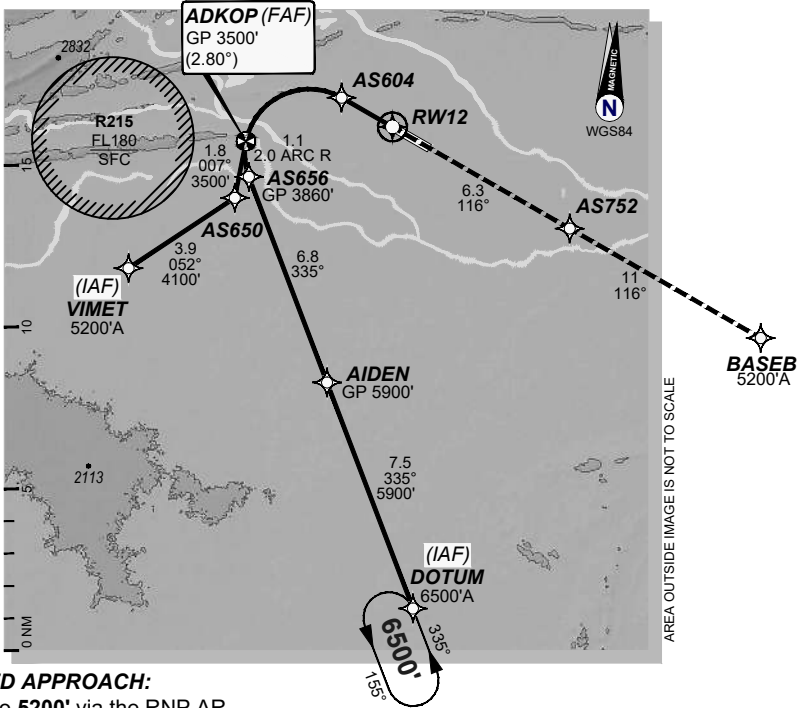
USE QNH

RNP P RWY 12 (AR)

21 MAR 2024

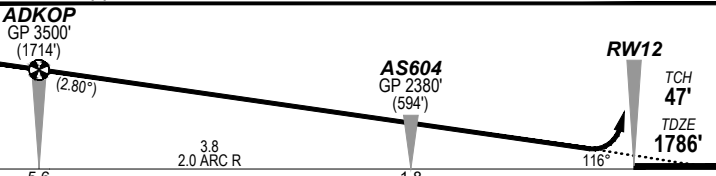
ALICE SPRINGS, NT (YBAS)

ATIS	AWIS	TWR	FIA (AH)	CTAF + AFRR (AH)
123.0 115.9 335	134.05	118.3	ML CEN 119.8	118.3
RNP AR	Apt Elev. 1789' TDZE 1786'	ADKOP (FAF) GP 3500' (2.80°)	Trans Level FL110	
RNP P 12				



**MISSED APPROACH:**

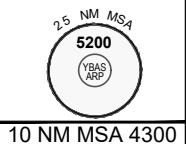
Climb to **5200'** via the RNP AR  
Missed Approach track to **BASEB**.



**NOTES:**

- YBAS ACT QNH RQ.
- Minimum MAP gradient (All Engines) 3.0% to 5200FT.
- APCH Path does not coincide with PAPI glide path 3°.

ADKOP GP 3500' (1714') (2.80°)		AS604 GP 2380' (594')		RWY12 TCH 47' TDZE 1786'	
5.6		3.8 2.0 ARC R		1.8	
				RNP 0.30	
				DA(H) 2104' (318')	
				HIALS OUT	
C		C		C	800 m 1700 m



**FOR CASA APPROVED OPERATORS ONLY**

202310241957COPYRIGHT 2023 GE Digital USA, GE PROPRIETARY INFORMATION

Changes: from SUP H81/23

**DO NOT USE FOR NAVIGATION**

BASGN04-178

© Airservices Australia

Prepared by GE Aviation



USE QNH

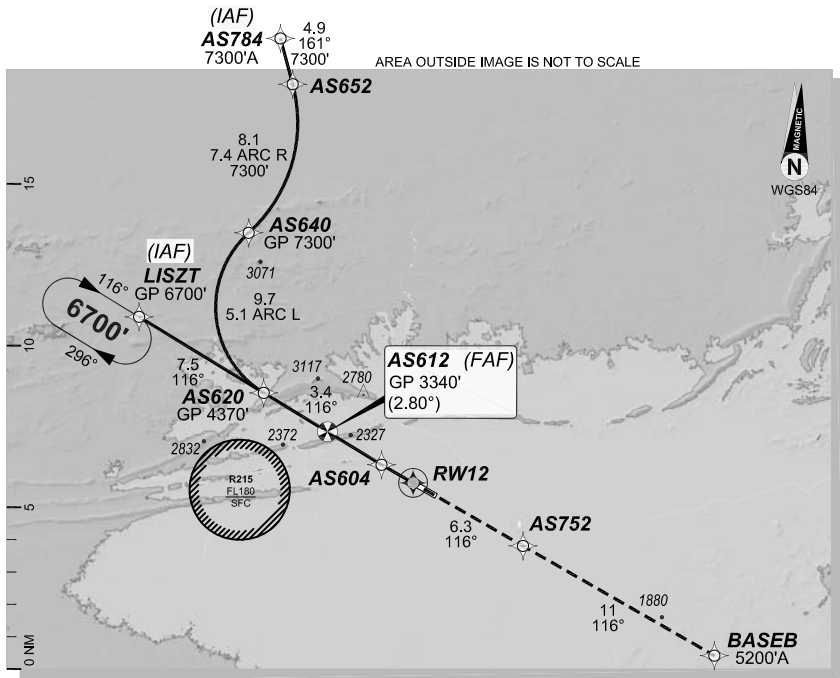
RNP U RWY 12 (AR)

ALICE SPRINGS, NT (YBAS)

1 DEC 2022

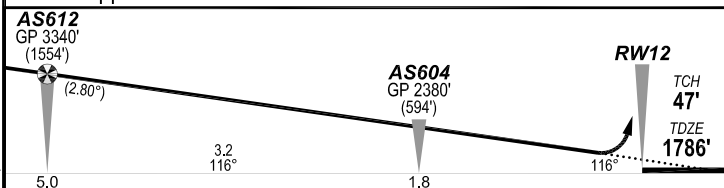
GE PROPRIETARY INFORMATION

ATIS <b>123.0 115.9 335</b>			AWIS <b>134.05</b>		TWR <b>118.3</b>	FIA (AH) <b>ML CEN 119.8</b>	CTAF + AFRU (AH) <b>118.3</b>
RNP AR <b>RNV U 12</b>		Apt Elev. <b>1789'</b> TDZE <b>1786'</b>	AS612 (FAF) <b>GP 3340'</b> (2.80°)		Trans Level <b>FL110</b>		



**MISSED APPROACH:**

Climb to **5200'** via the RNP AR  
Missed Approach track to **BASEB**.



**NOTES:**

- YBAS ACT QNH RQ.
- Minimum MAP gradient (All Engines) 3.0% to 5200FT.
- APCH Path does not coincide with PAPI glide path 3°.

AS612 GP 3340' (1554')		RWY12 TCH 47' TDZE 1786'	
5.0	3.2 116°	1.8	116°
RNP 0.30		DA(H) 2104' (318')	
C		C	
C		C	
C		C	
800 m		1700 m	



10 NM MSA 4300

**FOR CASA APPROVED OPERATORS ONLY**

Changes: PROC NAME, RNAV (RNP) TO RNP AR.

BASGN05-173

**DO NOT USE FOR NAVIGATION**

Prepared by GE Aviation



202208021125COPYRIGHT 2022 NAVERUS, INC. USA

USE QNH

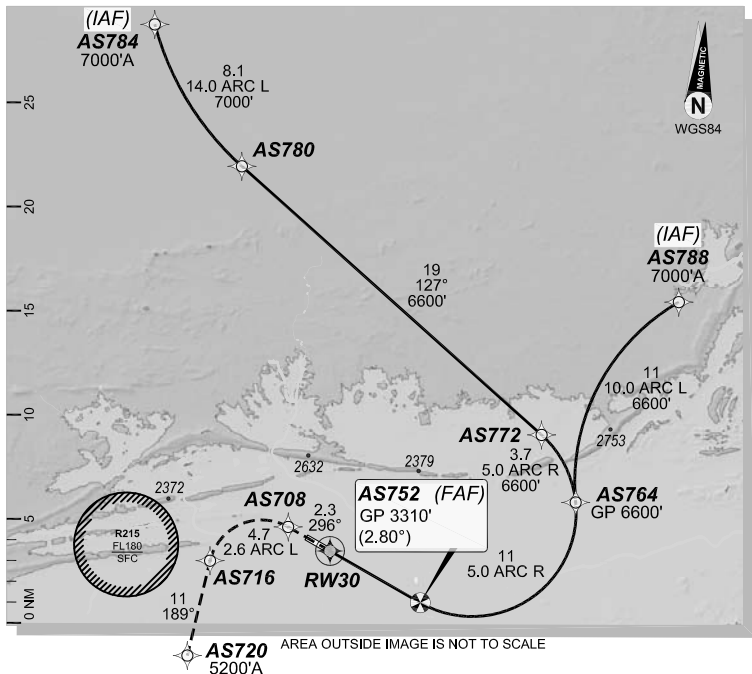
RNP M RWY 30 (AR)

1 DEC 2022

ALICE SPRINGS, NT (YBAS)

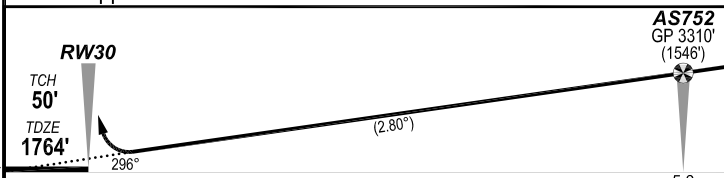
GE PROPRIETARY INFORMATION

ATIS <b>123.0 115.9 335</b>			AWIS <b>134.05</b>		TWR <b>118.3</b>	FIA (AH) <b>ML CEN 119.8</b>	CTAF + AFRU (AH) <b>118.3</b>
RNP AR <b>RNV M 30</b>		Apt Elev. <b>1789'</b> TDZE <b>1764'</b>	AS752 (FAF) <b>GP 3310'</b> (2.80°)		Trans Level <b>FL110</b>		



**MISSED APPROACH:**

Climb to **5200'** via the RNP AR  
Missed Approach track to **AS720**.



**NOTES:**

- YBAS ACT QNH RQ.
- Minimum MAP gradient (All Engines) 3.0% to 5200FT.
- APCH Path does not coincide with PAPI glide path 3°.

		RNP <b>0.30</b>	
		DA(H) <b>2067'</b> (303')	
C	C	C	C
		<b>1600 m</b>	



10 NM MSA 4300

**FOR CASA APPROVED OPERATORS ONLY**

Changes: PROC NAME, RNAV (RNP) TO RNP AR.

**DO NOT USE FOR NAVIGATION**

Prepared by GE Aviation

BASGN06-173



202208021125COPYRIGHT 2022 MAVERUS, INC. USA

USE QNH

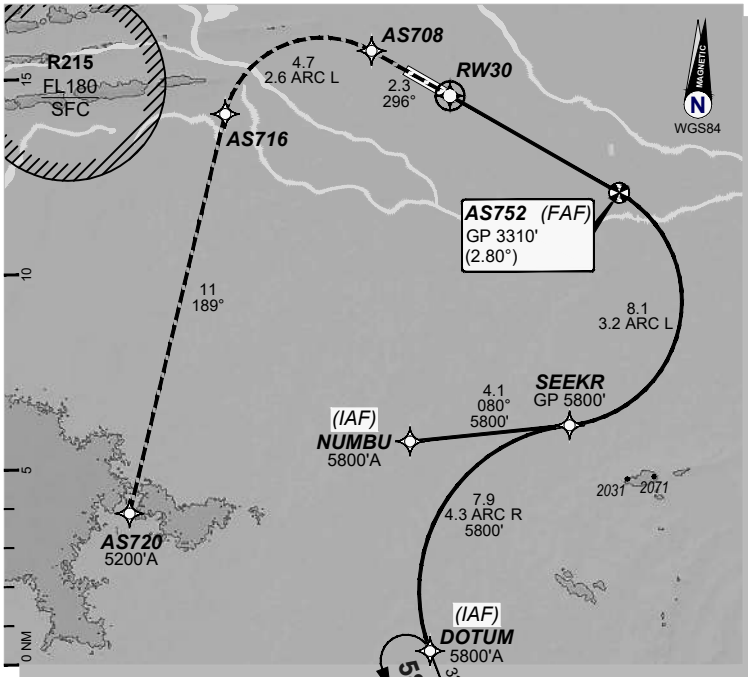
RNP P RWY 30 (AR)

21 MAR 2024

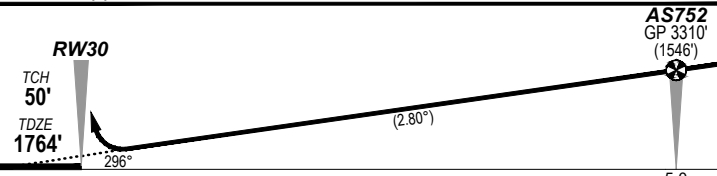
ALICE SPRINGS, NT (YBAS)

ATIS	AWIS	TWR	FIA (AH)	CTAF + AFRU (AH)
123.0 115.9 335	134.05	118.3	ML CEN 119.8	118.3

RNP AR RNP P 30	Apt Elev. 1789' TDZE 1764'	AS752 (FAF) GP 3310' (2.80°)	Trans Level FL110
--------------------	-------------------------------	---------------------------------	----------------------

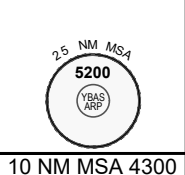


**MISSED APPROACH:**  
Climb to **5200'** via the RNP AR  
Missed Approach track to **AS720**.



**NOTES:**  
- YBAS ACT QNH RQ.  
- Minimum MAP gradient (All Engines) 3.0% to 5200FT.  
-APCH Path does not coincide with PAPI glide path 3°.

			RNP 0.30
			DA(H) 2067' (303')
C	C	C	1600 m



**FOR CASA APPROVED OPERATORS ONLY**

202310241959COPYRIGHT 2023 GE Digital USA, GE PROPRIETARY INFORMATION

Changes: from SUP H81/23

**DO NOT USE FOR NAVIGATION**

BASGN07-178

© Airservices Australia

Prepared by GE Aviation





USE QNH

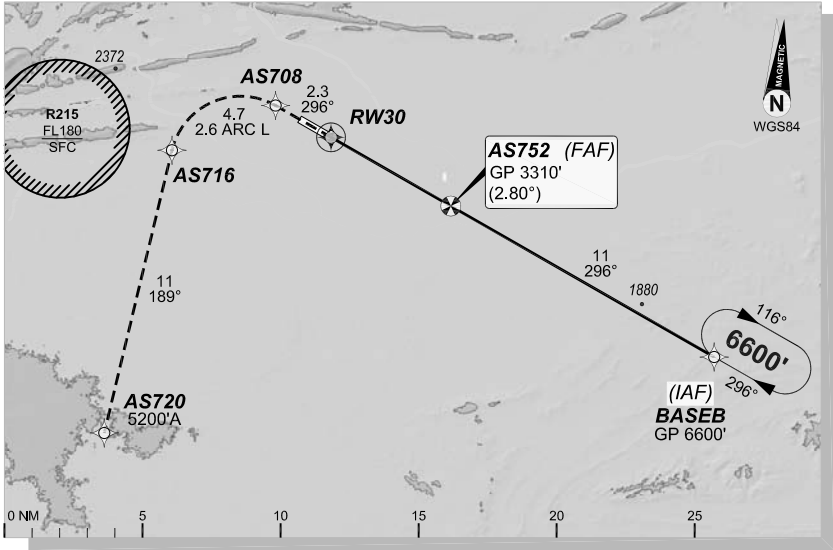
RNP U RWY 30 (AR)

1 DEC 2022

ALICE SPRINGS, NT (YBAS)

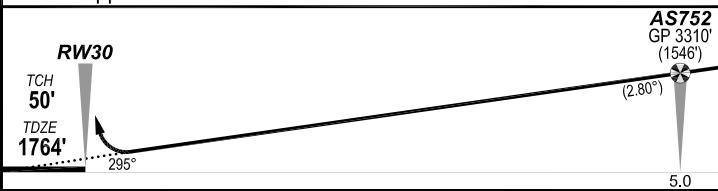
GE PROPRIETARY INFORMATION

ATIS <b>123.0 115.9 335</b>			AWIS <b>134.05</b>			TWR <b>118.3</b>			FIA (AH) <b>ML CEN 119.8</b>			CTAF + AFRU (AH) <b>118.3</b>		
RNP AR <b>RNV U 30</b>			Apt Elev. <b>1789'</b> TDZE <b>1764'</b>			AS752 (FAF) <b>GP 3310' (2.80°)</b>			Trans Level <b>FL110</b>					



**MISSED APPROACH:**

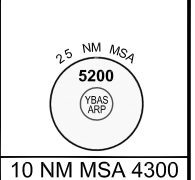
Climb to **5200'** via the RNP AR  
Missed Approach track to **AS720**.



**NOTES:**

- YBAS ACT QNH RQ.
- Minimum MAP gradient (All Engines) 3.0% to 5200FT.
- APCH Path does not coincide with PAPI glide path 3°.

			RNP <b>0.30</b>		
			DA(H) <b>2067'</b> (303')		
C	C	C	C	<b>1600 m</b>	



**FOR CASA APPROVED OPERATORS ONLY**

202208021126COPYRIGHT. 2022 NAVERUS, INC. USA

Changes: PROC NAME, RNAV (RNP) TO RNP AR.

**DO NOT USE FOR NAVIGATION**

Prepared by GE Aviation

BASGN08-173



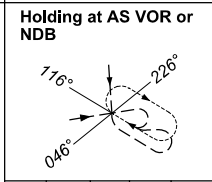
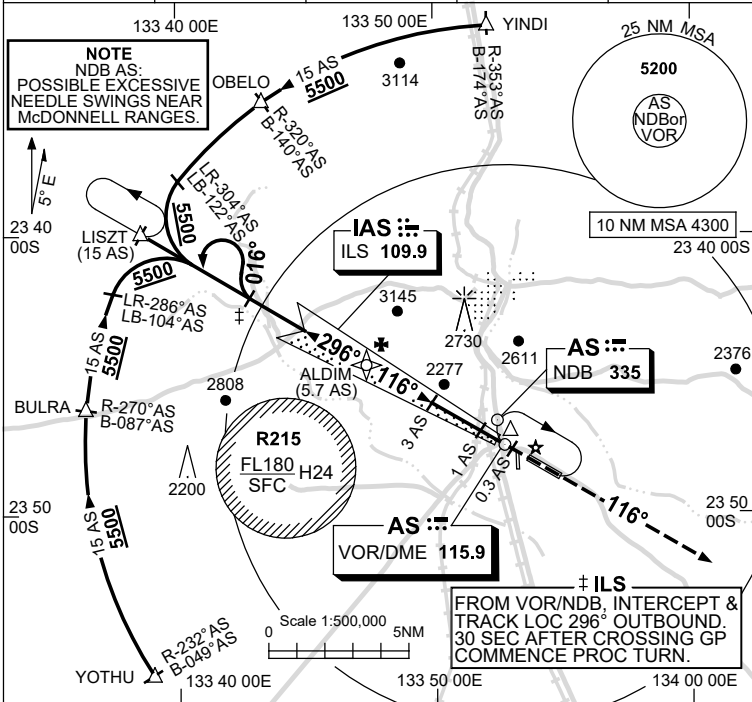
USE QNH

ILS-Y or LOC-Y RWY 12  
**ALICE SPRINGS, NT (YBAS)**

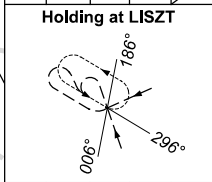
20 MAR 2025

ATIS 123.0 115.9 335	AWIS 134.05	TWR 118.3	FIA (AH) ML CEN 119.8	CTAF+AFRU (AH) 118.3
-------------------------	----------------	--------------	--------------------------	-------------------------

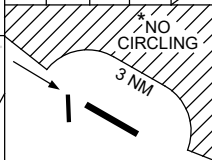
NAVAID RQ:  
 • DME or GNSS



TR	IN	TURN	TIME	MIN ALT	DME LMT
296°	Right	1	5500		

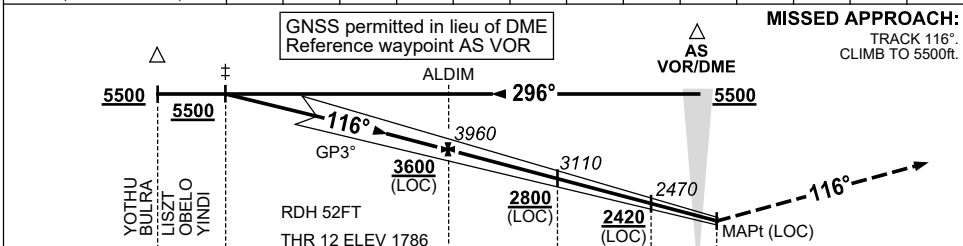


TR	IN	TURN	TIME	MIN ALT	DME LMT
116°	Left	1	5500		



AD ELEV 1789  
 Bearings are Magnetic  
 Elevations in FEET AMSL

NM TO AS DME	10.5	10	9	8	7	6	5.7	5	4	3	2	1	0.5
ALT (3° APCH PATH)	5500	5330	5010	4690	4370	4060	3960	3740	3420	3110	2780	2470	2320



MISSED APPROACH:  
 TRACK 116°.  
 CLIMB TO 5500ft.

NM TO AS DME	15	10.5	5.7	3	1	0.3
NM TO THR 12	11.5	6.7	4	2	1.0	0

- NOTES**
- MAX IAS:  
 HOLDING : 185KT.  
 HLDG NOT ABOVE FL120.
  - SPECIAL ALTN MNM 800/4.0KM.
  - NO CIRCLING N OF RWY 12 / 30 BEYOND 3NM.
  - CTA CONTAINMENT NOT ASSURED WHEN HOLDING AT LISZT AT OR BLW 6500ft.

CATEGORY	A	B	C	D/D <sub>L</sub>
S-I ILS		2100 (314) 0.8		
S-I LOC		2320 (531-2.1)		
CIRCLING*	2570 (781-2.4)		2990 (1201-4.0)	2990 (1201-5.0)
ALTERNATE*	(1281-4.4)		(1701-6.0)	(1701-7.0)

Changes: CAT DL.

BASII01-182

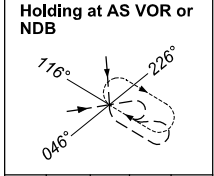
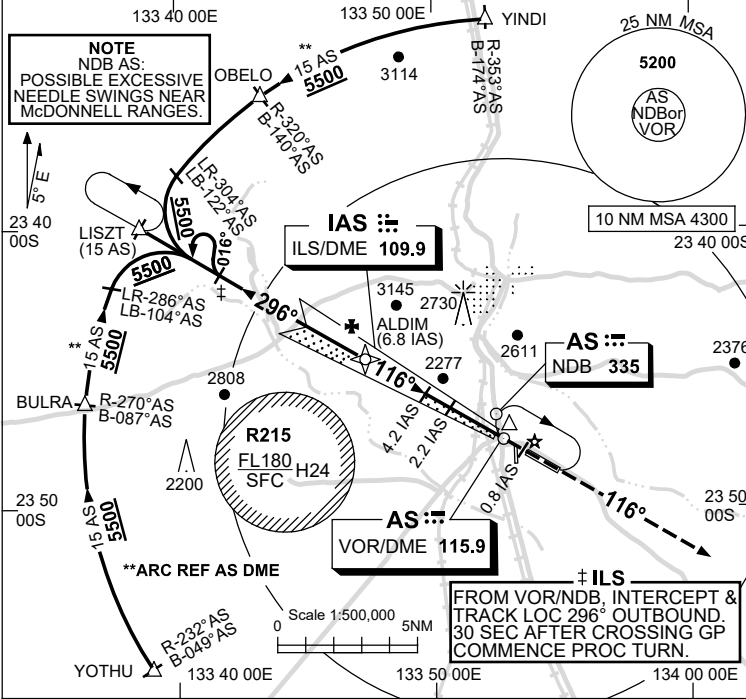
USE QNH

ILS-Z or LOC-Z RWY 12  
**ALICE SPRINGS, NT (YBAS)**

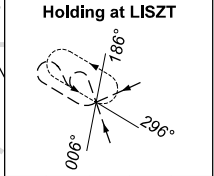
20 MAR 2025

ATIS 123.0 115.9 335	AWIS 134.05	TWR 118.3	FIA (AH) ML CEN 119.8	CTAF+AFRU (AH) 118.3
-------------------------	----------------	--------------	--------------------------	-------------------------

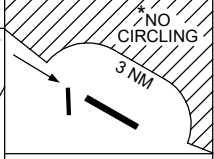
NAVAID RQ:  
 • DME or GNSS (ILS)  
 • DME (LOC ONLY)



TR IN	TURN	TIME	MIN ALT	DME LMT
296°	Right	1	5500	

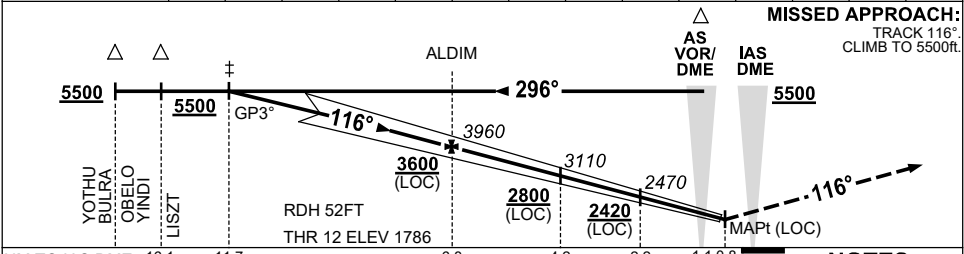


TR IN	TURN	TIME	MIN ALT	DME LMT
116°	Left	1	5500	



AD ELEV 1789  
 Bearings are Magnetic  
 Elevations in FEET AMSL

NM TO IAS DME	11.7	11	10	9	8	6.8	6	5	4.2	4	3	2.2	2	1.7
ALT (3° APCH PATH)	5500	5290	4970	4650	4330	3960	3690	3380	3110	3060	2740	2470	2420	2320



NM TO IAS DME	16.1	11.7		6.8	4.2	2.2	1.1	0.8
NM TO THR 12	16	11.5		6.7	4	2	1	0.6

- NOTES**
- MAX IAS:  
HOLDING : 185KT.  
HLDG NOT ABOVE  
FL120.
  - SPECIAL ALTN MNM  
800/4.0KM.
  - NO CIRCLING N  
OF RWY 12 / 30  
BEYOND 3NM.
  - CTA CONTAINMENT  
NOT ASSURED WHEN  
HOLDING AT LISZT  
AT OR BLW 6500ft.

CATEGORY	A	B	C	D/D <sub>L</sub>
S-I ILS		2100 (314) 0.8		
S-I LOC		2320 (531-2.1)		
CIRCLING*	2570 (781-2.4)		2990 (1201-4.0)	2990 (1201-5.0)
ALTERNATE*	(1281-4.4)		(1701-6.0)	(1701-7.0)

Changes: CAT DL.

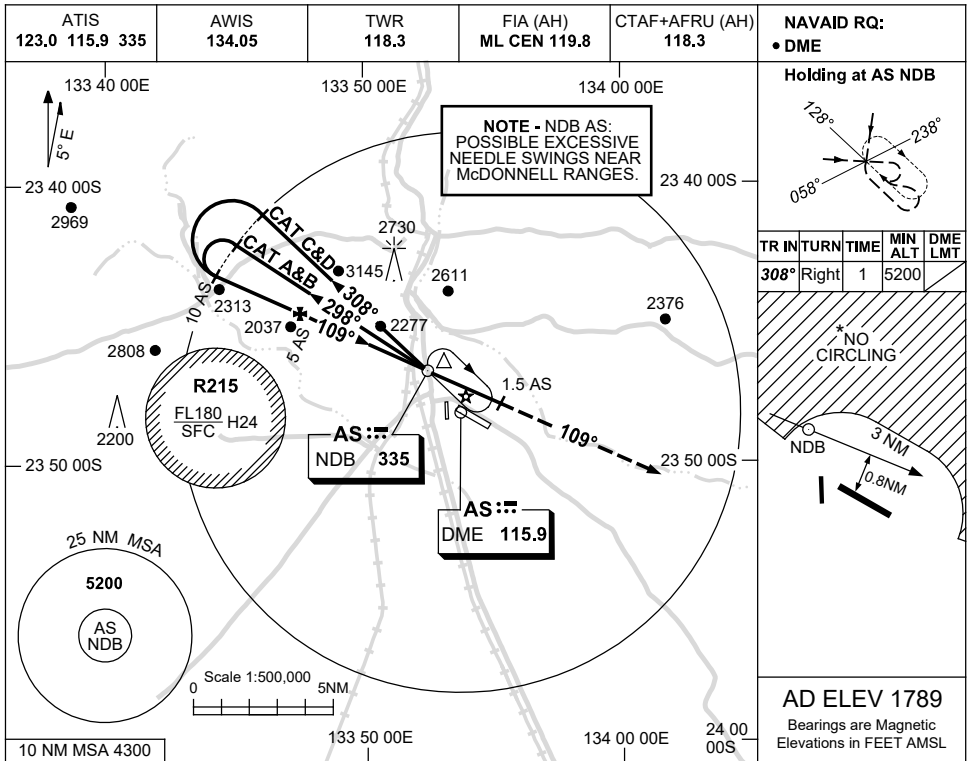
BASII02-182

USE QNH

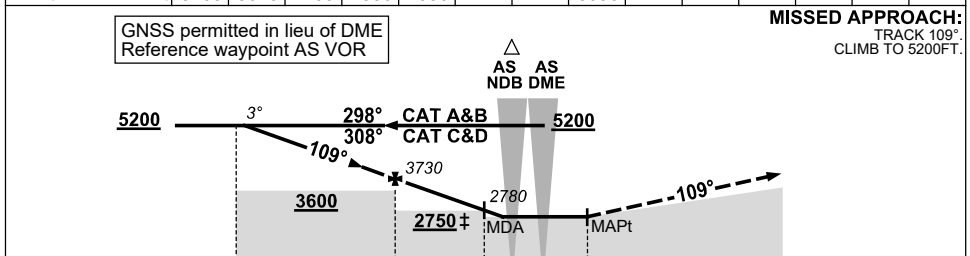
NDB-B

17 JUN 2021

ALICE SPRINGS, NT (YBAS)



DME DIST	9.6	9	8	7	6	5	4	3	2	1.3				
ALT (3° APCH PATH)	5200	5010	4700	4380	4050	3730	3410	3090	2780	2570				



**NOTES**

1. MAX IAS:  
INITIAL : 210KT.  
HOLDING : 210KT.  
HLDG NOT ABOVE FL120.
- ‡ 2. CAT C&D ACFT DO NOT DESCEND BLW CIRCLING MINIMA.
- \* 3. NO CIRCLING N OF RWY 12/30 BEYOND 3NM.

CATEGORY	A	B	C	D
CIRCLING *	2570 (781-2.4)	2990 (1201-4.0)	2990 (1201-5.0)	
ALTERNATE	(1281-4.4)	(1701-6.0)	(1701-7.0)	

Changes: COORD FMT, Editorial.

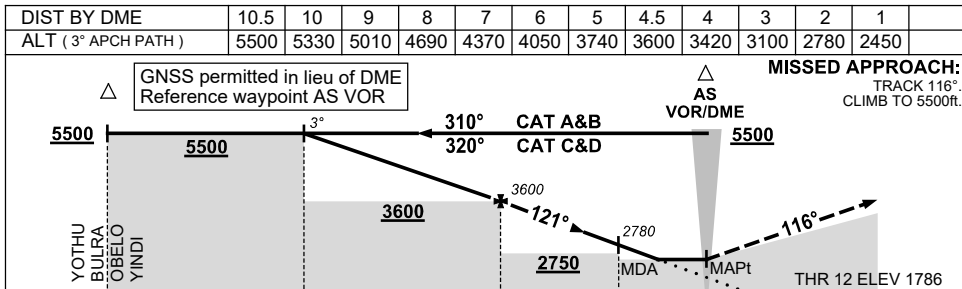
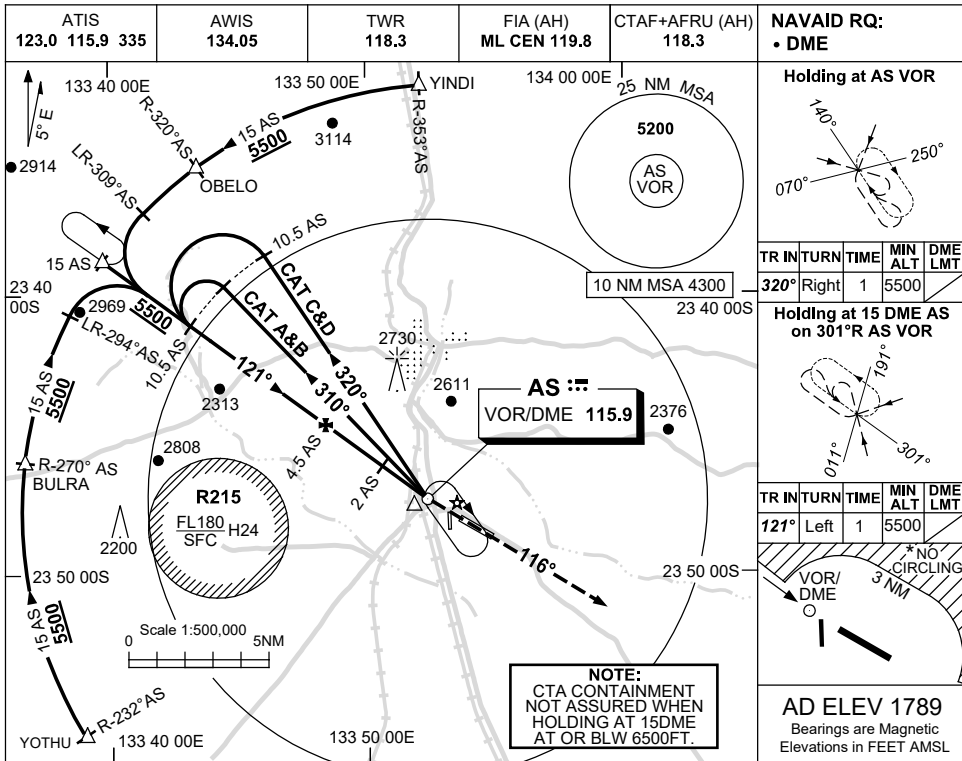
BASNB02-167

USE QNH

VOR RWY 12

28 NOV 2024

ALICE SPRINGS, NT (YBAS)



CATEGORY	A	B	C	D
S-I VOR/DME	2450 (661-2.9)			
CIRCLING *	2570 (781-2.4)		2990(1201-4.0) 2990(1201-5.0)	
ALTERNATE ‡	(1281-4.4)		(1701-6.0) (1701-7.0)	

- NOTES**
1. MAX IAS:  
INITIAL : 210KT.  
HOLDING : 185KT.  
HLDG NOT ABOVE FL120.
  - ‡ 2. SPECIAL ALTN MNM 800/4.0KM.
  - \* 3. NO CIRCLING N OF RWY 12 / 30 BEYOND 3NM.

Changes: FROM SUP H107/24.

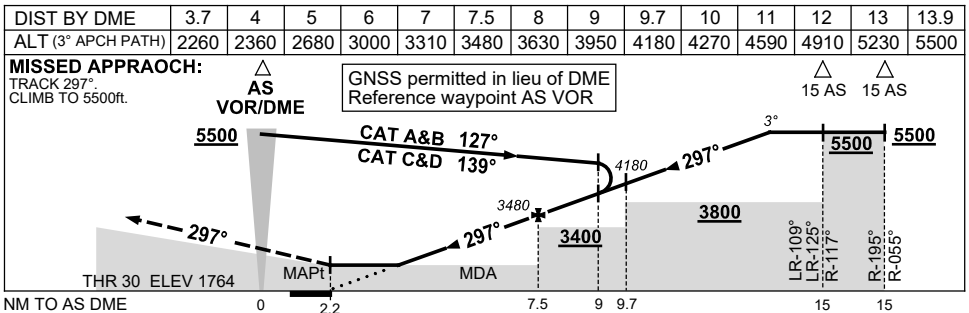
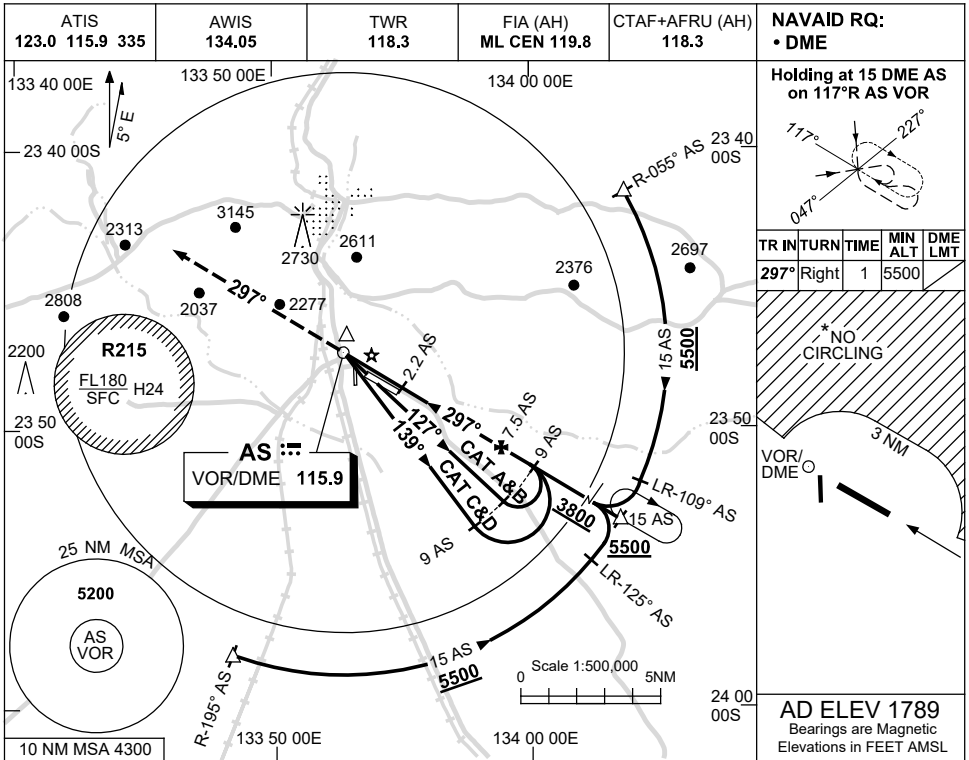
BASV001-181

USE QNH

VOR RWY 30

13 JUN 2024

ALICE SPRINGS, NT (YBAS)



CATEGORY	A	B	C	D
S-I VOR/DME	2260 (496-2.8)			
CIRCLING*	2570 (781-2.4)	2990 (1201-4.0)	2990 (1201-5.0)	
ALTERNATE*	(1281-4.4)	(1701-6.0)	(1701-7.0)	

- NOTES**
1. MAX IAS:  
INITIAL : 210KT.
  - \* 2. SPECIAL ALTN MNM  
800/4.0KM.
  - \* 3. NO CIRCLING N  
OF RWY 12/30  
BEYOND 3NM.
  4. CTA CONTAINMENT  
NOT ASSURED WHEN  
HOLDING AT OR BLW  
6500FT.

Changes: NOTE 4.

BASV002-179