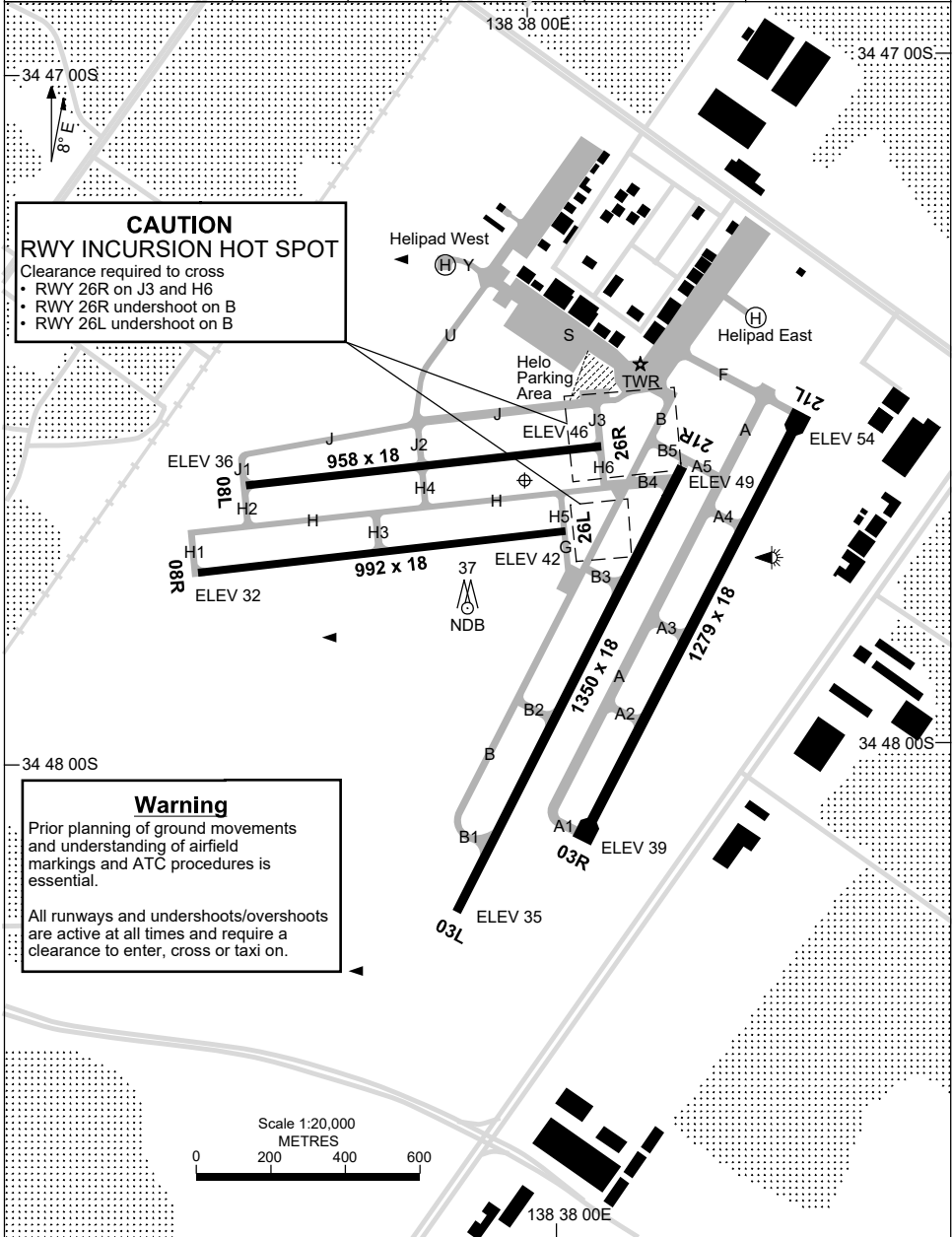


17 JUN 2021

34 47 36S 138 37 59E

ADELAIDE/PARAFIELD, SA (YPPF)

ATIS PF 120.9 416	APP AD 124.2 118.2	TWR PF 118.7 124.6	SMC PF 119.9	FIA (AH) AD CEN 130.45	CTAF+AFRU (AH) 118.7	Bearings are Magnetic Elevations in FEET AMSL
----------------------	-----------------------	-----------------------	-----------------	---------------------------	-------------------------	--



Changes: RWY 03R, RWY 21L, RWY 26L, RWY 08R, RWY 08L AND 03L THR ELEVATION, Editorial.

PPFAD01-167

1 DEC 2022

34 47 36S 138 37 59E

ADELAIDE/PARAFIELD, SA (YPPF)

ATIS PF 120.9 416	APP AD 124.2 118.2	TWR PF 118.7 124.6	SMG PF 119.9	FIA (AH) AD CEN 130.45	CTAF+AFRU (AH) 118.7	Bearings are Magnetic Elevations in FEET AMSL
-----------------------------	------------------------------	------------------------------	------------------------	----------------------------------	--------------------------------	--

--	--	--	--	--	--	--

RWY	AERODROME LIGHTING					
		ABN	:	FLG W 6 SEC (TWR HR)		
	TAXIWAY	:	GREEN CENTRELINE			
	RL	:	MAN , SDBY (15 SEC)			
03L ⁰²⁰	LIRL					
²⁰⁰ 21R	LIRL					
03R ⁰²⁰	NIL					
²⁰⁰ 21L	NIL					
08L ⁰⁷⁷	NIL					
²⁵⁷ 26R	NIL					
08R ⁰⁷⁷	NIL					
²⁵⁷ 26L	NIL					

NOTES						

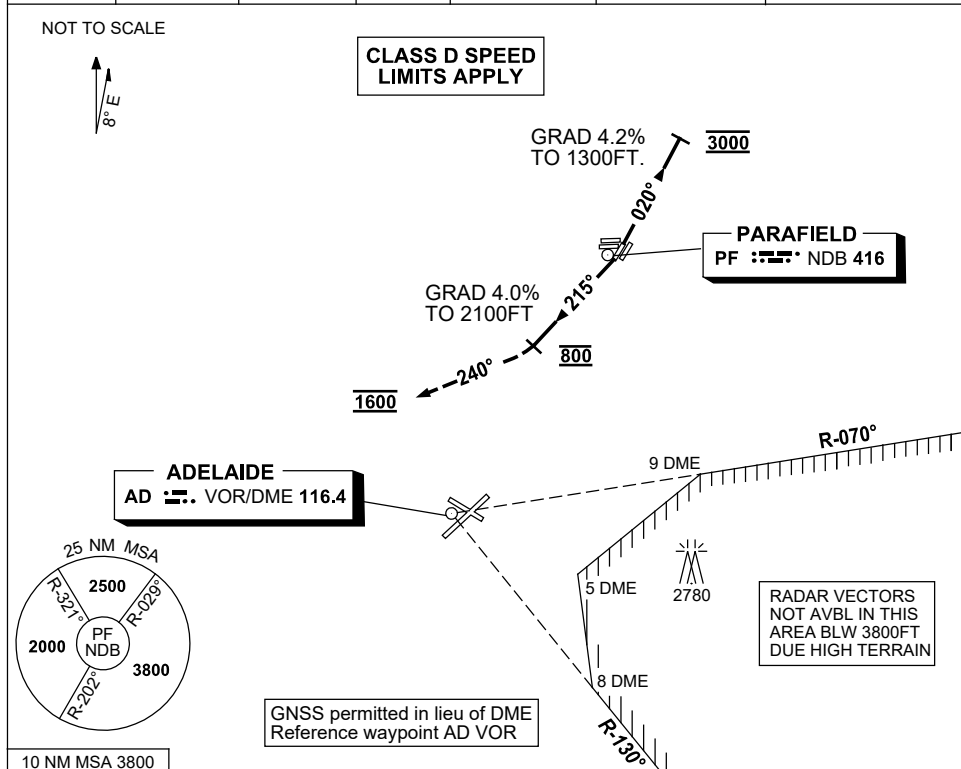
Changes: SDBY SWITCH OVER TIME AND NOTES.

PPFAD02-173

**STANDARD INSTRUMENT DEPARTURES (SID)
PARAFIELD ONE DEP (RADAR) - RWY 03L & 21R
ADELAIDE/PARAFIELD, SA (YPPF)**

17 JUN 2021

ATIS PF 120.9 416	APP AD 124.2 118.2	TWR PF 118.7 124.6	SMC PF 119.9	FIA (AH) AD CEN 130.45	CTAF+AFRU (AH) 118.7	Bearings are Magnetic Elevations in FEET AMSL
----------------------	-----------------------	-----------------------	-----------------	---------------------------	-------------------------	--



PARAFIELD ONE DEPARTURE (RADAR)

RWY 03L

- GRAD 4.2% to 1300FT, then 3.3%
- Track 020°
- AT 3000FT turn to assigned heading or track
- Contact Approach when advised by Tower or approaching controlled airspace

RWY 21R

- GRAD 4% to 2100FT, then 3.3%
- At DER, turn RIGHT track 215°.
- AT 800FT turn RIGHT track 240°
- AT 1600FT turn to assigned heading
- Contact Approach when advised by Tower or approaching controlled airspace

COMMUNICATIONS FAILURE PROCEDURE

On recognition of communication failure

- Squawk 7600
- Maintain last assigned vector for two minutes, and
- CLIMB IF NECESSARY TO MINIMUM SAFE ALTITUDE, to maintain terrain clearance, then
- Proceed in accordance with the latest ATC route clearance acknowledged.

Changes: Editorial.

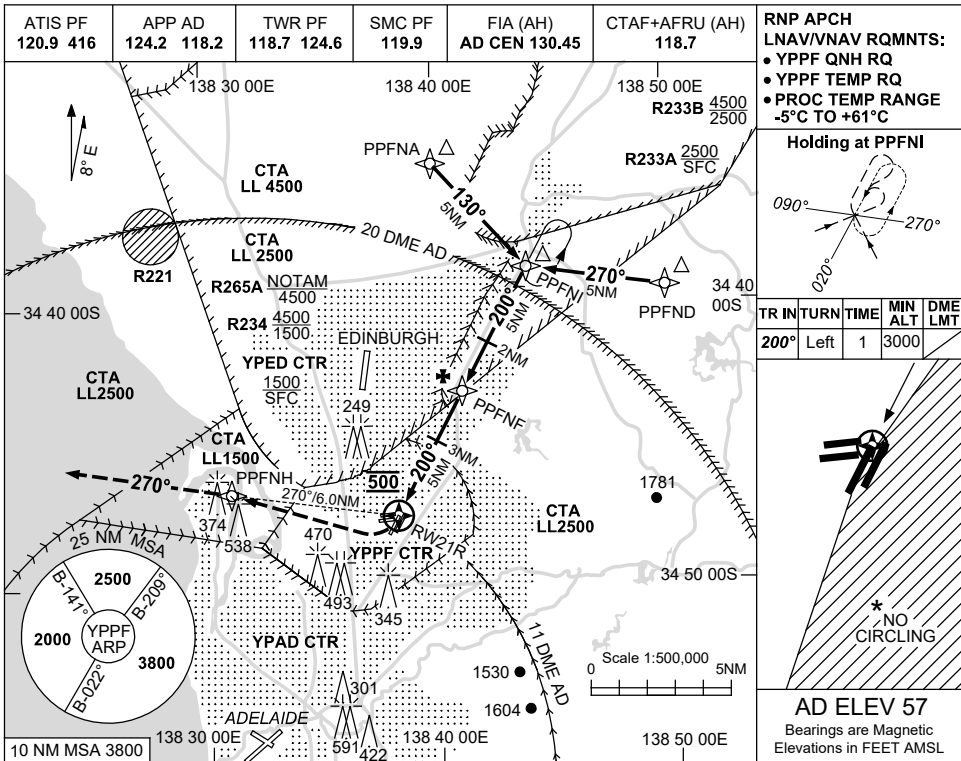
PPFDP01-167

USE QNH

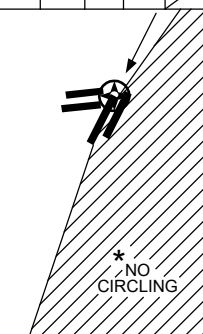
RNP RWY 21R

23 MAR 2023

ADELAIDE/PARAFIELD, SA (YPPF)

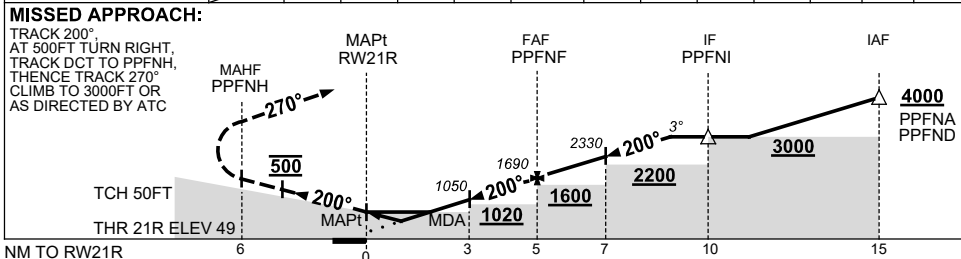


TR	IN	TURN	TIME	MIN ALT	DME LMT
200°	Left	1	3000		



AD ELEV 57
Bearings are Magnetic
Elevations in FEET AMSL

NM TO NEXT WPT	RW21R	1.2	1.8	3	4	PPFNF	1	2	3	4	4.1		
ALT (3° APCH PATH)		480	660	1050	1370	1690	2010	2330	2650	2960	3000		



NOTES

CATEGORY	A	B	C	D
LNAV/VNAV	480 (431-2.4)		NOT APPLICABLE	
LNAV	660 (611-3.5)			
CIRCLING *	1000 (943-2.4)			
ALTERNATE	(1443-4.4)			

- * 1. NO CIRCLING EAST OF RWY 03L/21R.
- 2. PROC NOT AVBL FOR TRAINING.

Changes: MISSED APPROACH INSTRUCTION.

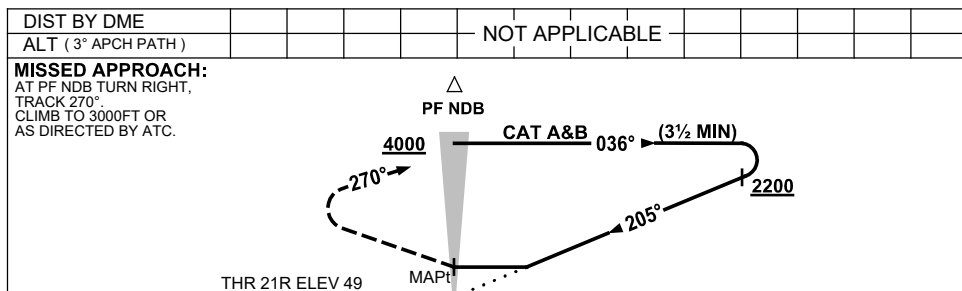
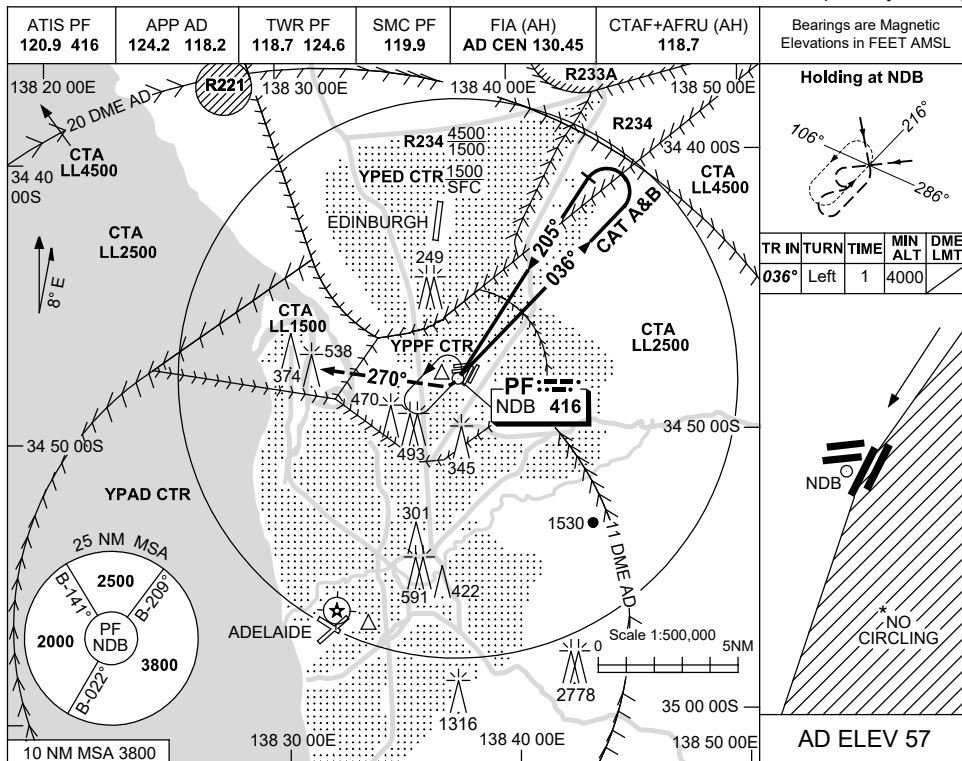
PPFGN01-174

USE QNH

NDB-Y RWY 21R

25 MAR 2021

ADELAIDE/PARAFIELD, SA (YPPF)



NM to AD DME

NOTES

CATEGORY	A	B	C	D
S-I NDB	1580 (1531-5.0)		NOT APPLICABLE	
CIRCLING *	1580 (1523-2.4)			
ALTERNATE	(2023-4.4)			

1. MAX IAS:
INITIAL:
CAT A&B 140KT.
HOLDING: 150KT.
- *2. NO CIRCLING EAST OF RWY 03L/21R.
3. PROC NOT AVBL FOR TRAINING.

Changes: EDINBURGH AIRPORT RWY DEPICTION, COORD FMT, 249FT OBST ADDED, Editorial.

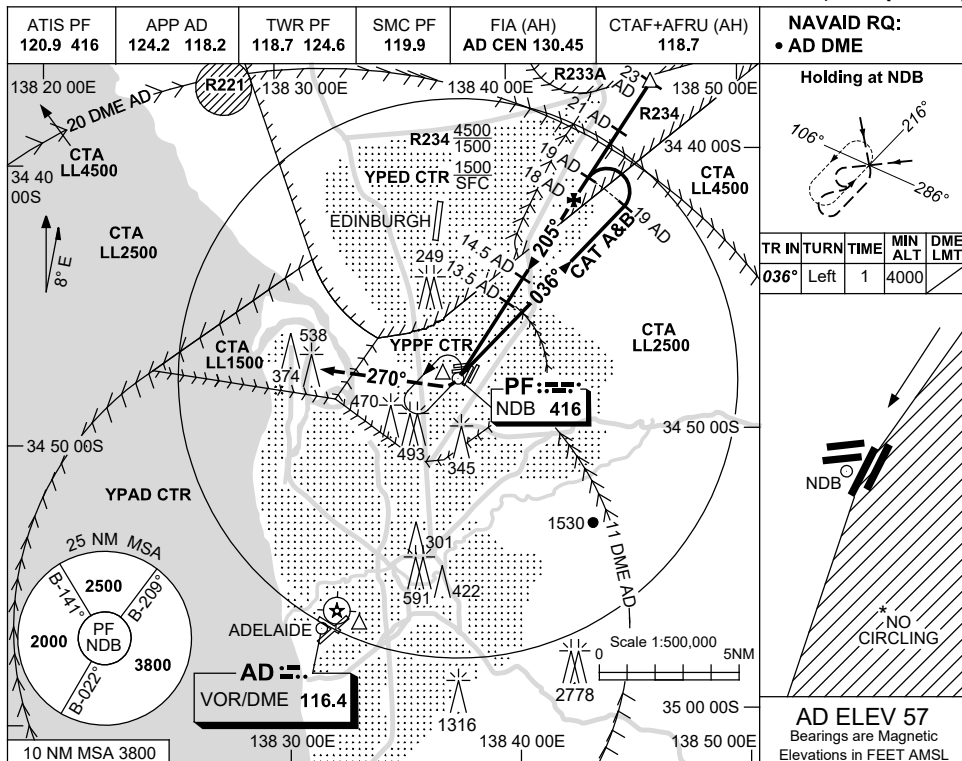
PPFNB01-166

USE QNH

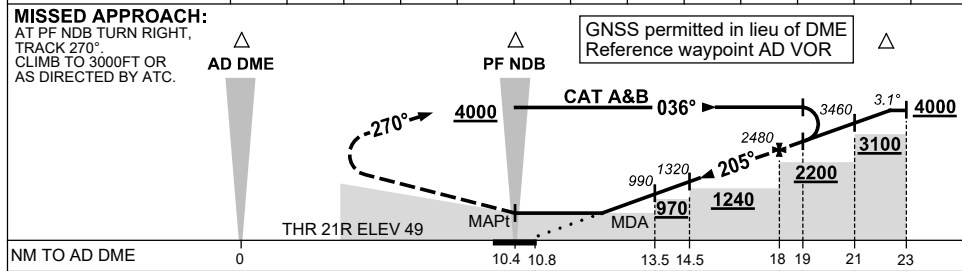
NDB-Z RWY 21R

25 MAR 2021

ADELAIDE/PARAFIELD, SA (YPPF)



DIST BY DME (AD)	13.1	13.5	14.5	15	16	17	18	19	20	21	22	22.6	
ALT(3.1° APCH PATH)	860	990	1320	1490	1820	2150	2480	2810	3130	3460	3790	4000	



NOTES

CATEGORY	A	B	C	D
S-I NDB/DME	860 (811-4.6)		NOT APPLICABLE	
CIRCLING *	1000 (943-2.4)			
ALTERNATE	(1443-4.4)			

1. MAX IAS:
INITIAL:
CAT A&B 140KT.
HOLDING: 150KT.
- *2. NO CIRCLING EAST OF RWY 03L/21R.
3. PROC NOT AVBL FOR TRAINING.

Changes: EDINBURGH AIRPORT RWY DEPICTION, COORD FMT, 249FT OBST ADDED, Editorial.

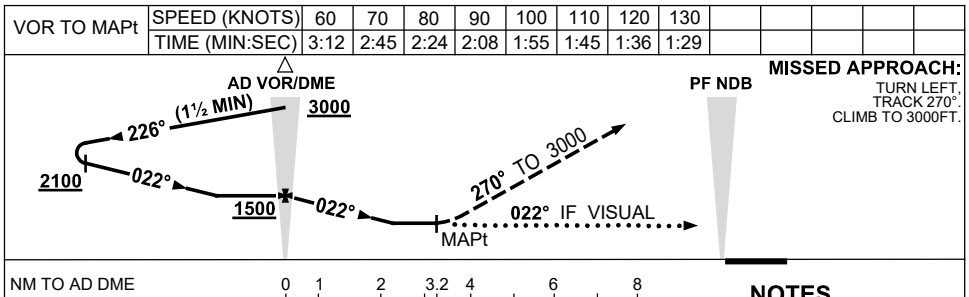
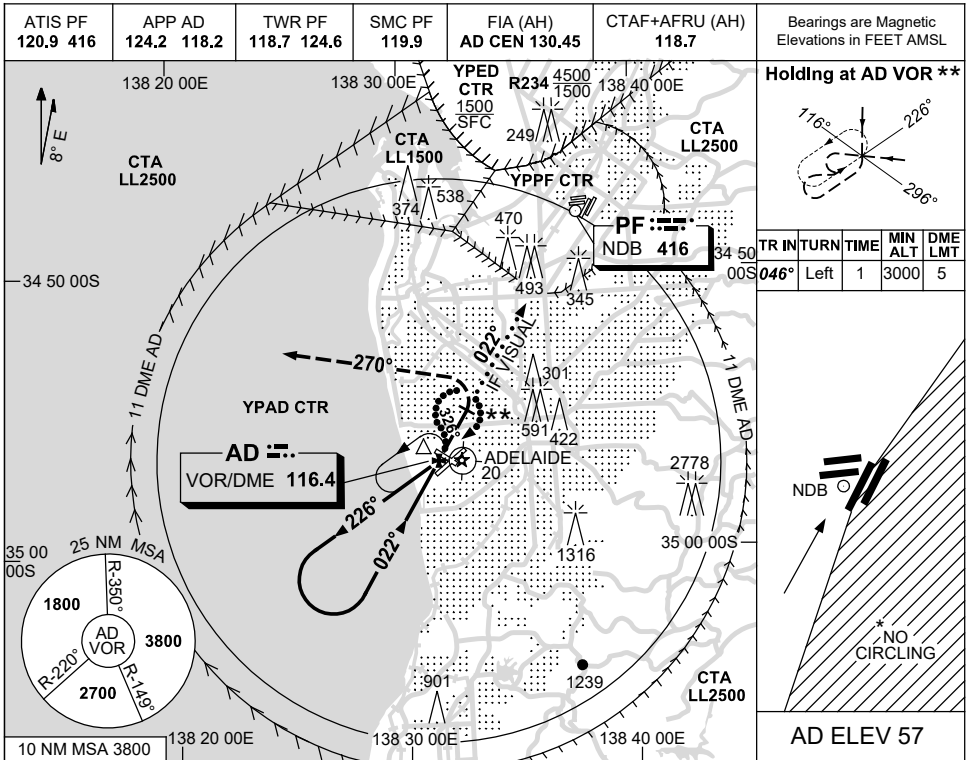
PPFNB02-166

USE QNH

VOR-A

2 DEC 2021

ADELAIDE/PARAFIELD, SA (YPPF)



CATEGORY	A	B	C	D
CIRCLING *	1120 (1063-2.4)		NOT APPLICABLE	
ALTERNATE	(1563-4.4)			

NOTES

1. MAX IAS:
APPROACH: 140KT.
HOLDING : 150KT.
2. ACFT MAY BE RADAR VECTORED TO INTERCEPT FINAL APPROACH AT VOR, 1500FT.
- * 3. NO CIRCLING EAST OF RWY 03L/21R.
4. PROC NOT AVBL FOR TRAINING.
- ** 5. PROC TURN (80°/260°) REQD TO JOIN PROC FROM HOLD.

Changes: PROFILE VIEW DIST.

PPFV001-169