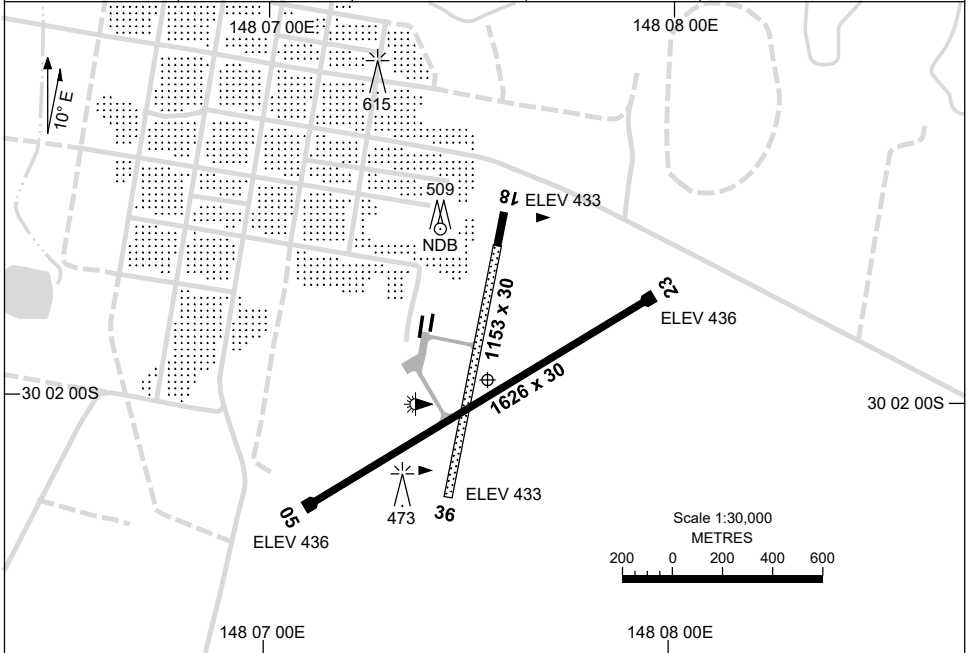


7 SEP 2023

AD ELEV 439
30 01 58S 148 07 33E

AERODROME CHART
WALGETT, NSW (YWLG)

AWIS 133.425	FIA BN CEN 127.1	CTAF 126.7	PAL+AA 122.4	Bearings are Magnetic Elevations in FEET AMSL
-----------------	---------------------	---------------	-----------------	--



AERODROME LIGHTING	
RWY	TAXIWAY : BLUE EDGE
	RL : PAL+AA 122.4 , SDBY MAN, PN.
05 ⁰⁴⁸	LIRL
228 23	LIRL
18 ¹⁸⁰	NIL
360 36	NIL

NOTES

1. FIA FREQ 127.1 AVBL CIRCUIT AREA.

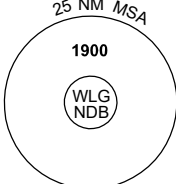
Changes: NOTES.

WLGAD01-176

GNSS ARRIVAL PROCEDURES WALGETT, NSW (YWLG)

16 JUN 2022

AWIS 133.425	FIA BN CEN 127.1	CTAF 126.7	PAL+AA 122.4	Bearings are Magnetic Elevations in FEET AMSL
-----------------	---------------------	---------------	-----------------	--




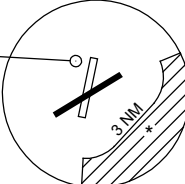
25 NM MSA

1900

WLG NDB

REFERENCE WAYPOINT WLG NDB





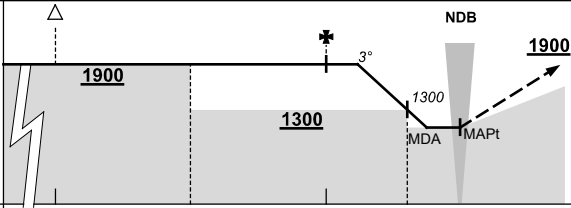
3 NM

* NO CIRCLING IN SECTOR SOUTH-EAST OR RWY 23 & RWY 36 BEYOND 3 NM.

10 NM MSA 1900

AD ELEV 439

**ALL ROUTES
TO
WLG NDB**



NDB

1900

1300

1300

MDA

MAPt

3°

MISSED APPROACH:

CLIMB ON TRACK TO 1900FT.

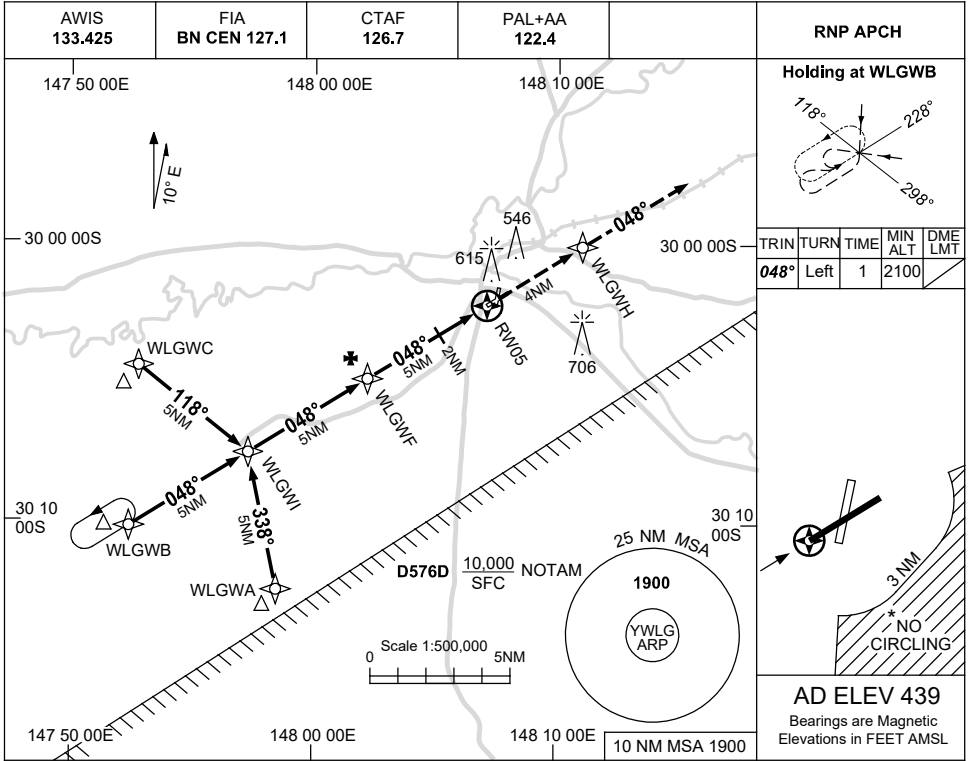
NM TO WLG NDB	25	15	10	5	2	0														
CIRCLING MINIMA	A,B: 1040-2.4		C: 1130-4.0		D: N/A															
NM TO WLG NDB	3.9	3	2	1.5	1.2															
ALT (3° APCH PATH)	1900	1620	1300	1130	1040															

USE QNH

RNP RWY 05

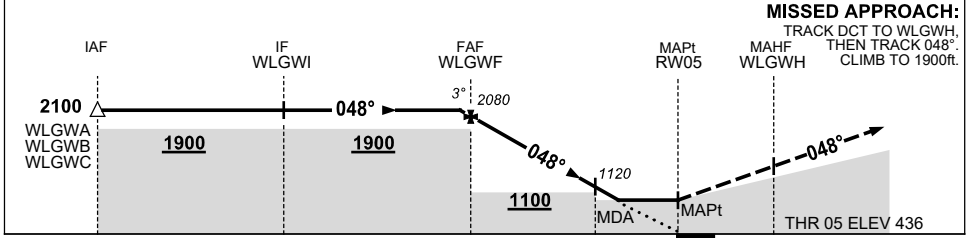
WALGETT, NSW (YWLG)

21 MAR 2024



AD ELEV 439
Bearings are Magnetic Elevations in FEET AMSL

NM TO NEXT WPT	0.1	WLGWF	4	3	2	1.4	RW05						
ALT (3° APCH PATH)	2100	2080	1760	1440	1120	940							



MISSED APPROACH:
TRACK DCT TO WLGWH,
THEN TRACK 048°,
CLIMB TO 1900ft.

NM TO RW05: 15, 10, 5, 2, 0, 4
THR 05 ELEV 436

CATEGORY	A	B	C	D
LNAV	940 (501-2.8)			NOT APPLICABLE
CIRCLING*	1040 (601-2.4)		1130 (691-4.0)	
ALTERNATE	(1101-4.4)		(1191-6.0)	

- NOTES**
- MAX IAS: INITIAL : 210KT.
 - NO CIRCLING IN SECTOR SOUTH-EAST OF RWY 23 & RWY 36 BEYOND 3NM.

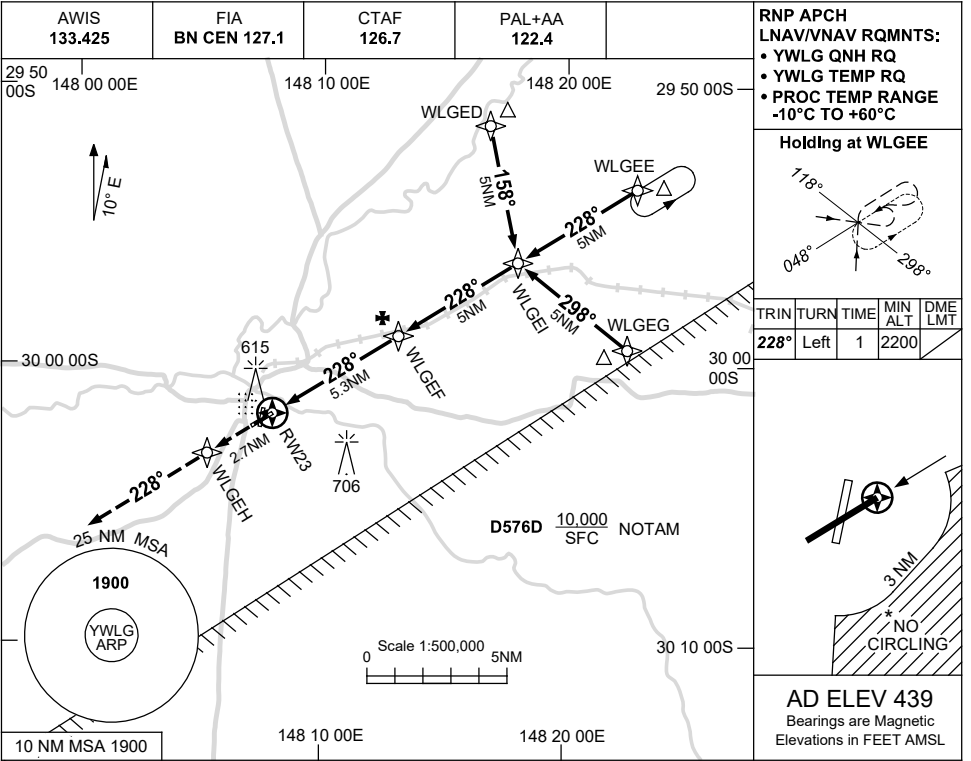
Changes: D576D ADDED, Editorial.

WLGGN01-178

USE QNH

RNP RWY 23
WALGETT, NSW (YWLG)

21 MAR 2024



RNP APCH LNAV/VNAV RQMNTS:

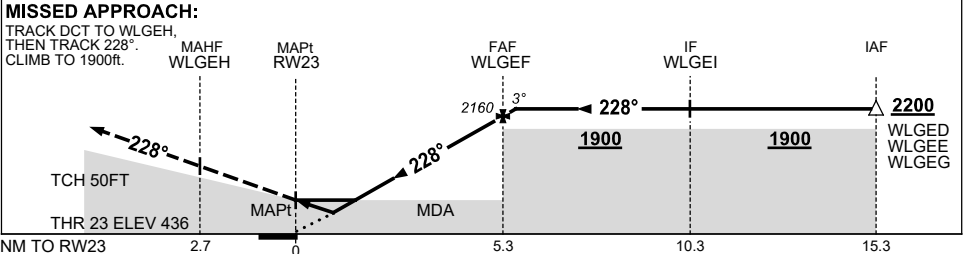
- YWLG QNH RQ
- YWLG TEMP RQ
- PROC TEMP RANGE -10°C TO +60°C

Holding at WLGEI

TRIN	TURN	TIME	MIN ALT	DME LMT
228°	Left	1	2200	

AD ELEV 439
 Bearings are Magnetic
 Elevations in FEET AMSL

NM TO NEXT WPT	RW23	0.8	1	1.4	2	3	4	5	WLGEI	0.1			
ALT (3° APCH PATH)		750	800	940	1120	1440	1760	2080	2160	2200			



CATEGORY	A	B	C	D
LNAV/VNAV		750 (314-1.7)		NOT APPLICABLE
LNAV		940 (501-2.8)		
CIRCLING*	1040 (601-2.4)		1130 (691-4.0)	
ALTERNATE		(1101-4.4)	(1191-6.0)	

- NOTES**
1. MAX IAS: INITIAL : 210KT.
 2. NO CIRCLING IN SECTOR SOUTH-EAST OF RWY 23 & RWY 36 BEYOND 3 NM.

Changes: D576D ADDED, Editorial.

WLGGN02-178

