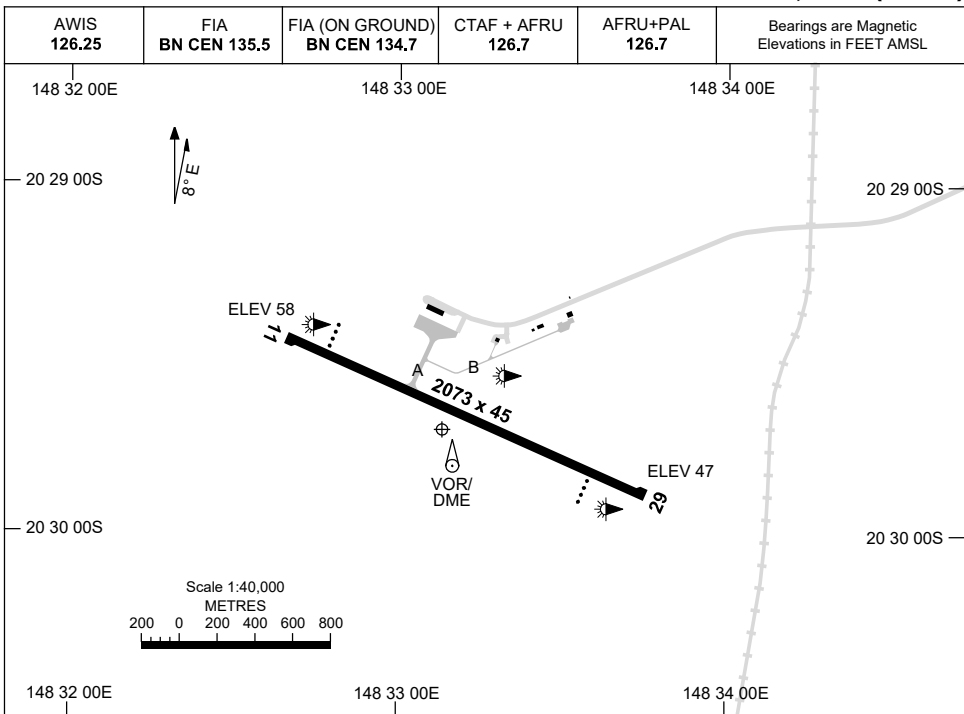


AD ELEV 82 AERODROME CHART
21 MAY 2020 20 29 42S 148 33 08E **PROSERPINE/WHITSUNDAY COAST, QLD (YBPN)**



	AERODROME LIGHTING
RWY	TAXIWAY : GREEN CENTRELINE RL : AFRU+PAL 126.7 , SDBY (15 SEC)
11 <small>106</small>	PAPI 3.0° 50FT LIRL RTIL
<small>286</small> 29	PAPI 3.0° 50FT LIRL

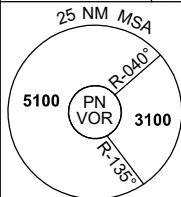
NOTES

Changes: 142FT OBST REMOVED, COORD FMT.

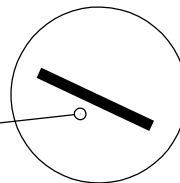
BPNA01-163

8 SEP 2022

AWIS 126.25	FIA BN CEN 135.5	FIA (ON GROUND) BN CEN 134.7	CTAF + AFRU 126.7	AFRU+PAL 126.7	Bearings are Magnetic Elevations in FEET AMSL
----------------	---------------------	---------------------------------	----------------------	-------------------	--



**DME USING PN DME
REFERENCE WAYPOINT PN VOR**



10 NM MSA 4500

AD ELEV 82

SECTOR A

NM TO PN VOR	25	15	11	8	6	0								
CIRCLING MINIMA	A,B: 800-2.4		C: 1030-4.0		D: 1420-5.0									
NM TO PN VOR	9.6	9	8	7	6	5	4.3	4	3.1	2.4				
ALT (3° APCH PATH)	3100	2920	2600	2280	1960	1660	1420	1330	1030	800				

SECTOR B

NM TO PN VOR	25	15	12	10	9	5	4	0							
CIRCLING MINIMA	A,B: 930-2.4		C: 1030-4.0		D: 1420-5.0										
NM TO PN VOR	12	11	10	9	8	7	6	5	4	3	2	1.5	1	0.4	0.1
ALT (3.3° APCH PATH)	5100	4750	4400	4050	3700	3350	3000	2650	2300	1950	1600	1420	1250	1030	930

SECTOR C

NM TO PN VOR	25	15	12	9	7	5	3	0							
CIRCLING MINIMA	A,B: 870-2.4		C: 1030-4.0		D: 1420-5.0										
NM TO PN VOR	11.4	11	10	9	8	7	6	5	4	3	2	1.5	1	0.5	0.1
ALT (3.5° APCH PATH)	5100	4950	4580	4210	3840	3460	3090	2720	2350	1980	1610	1420	1230	1030	870

Changes: SDF, Editorial.

BPNDG01-172

8 SEP 2022

PROSERPINE/WHITSUNDAY COAST, QLD (YBPN) Page 2

AWIS 126.25	FIA BN CEN 135.5	FIA (ON GROUND) BN CEN 134.7	CTAF + AFRU 126.7	AFRU+PAL 126.7	Bearings are Magnetic Elevations in FEET AMSL
----------------	---------------------	---------------------------------	----------------------	-------------------	--

25 NM MSA
5100 PN VOR 3100
R-040°
R-135°

**DME USING PN DME
REFERENCE WAYPOINT PN VOR**

PN VOR/DME 113.7

10 NM MSA 4500

AD ELEV 82

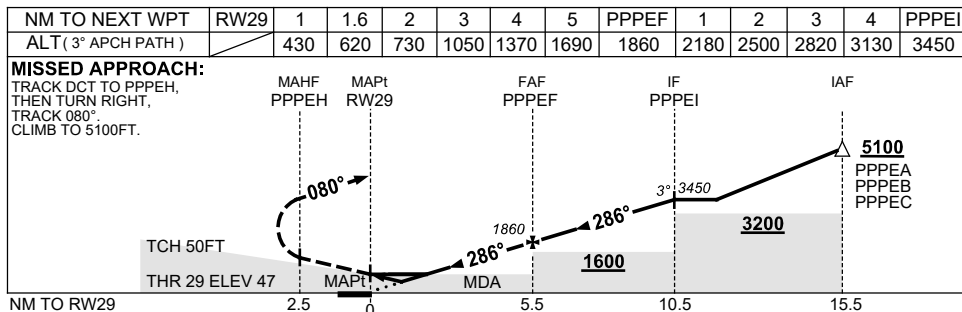
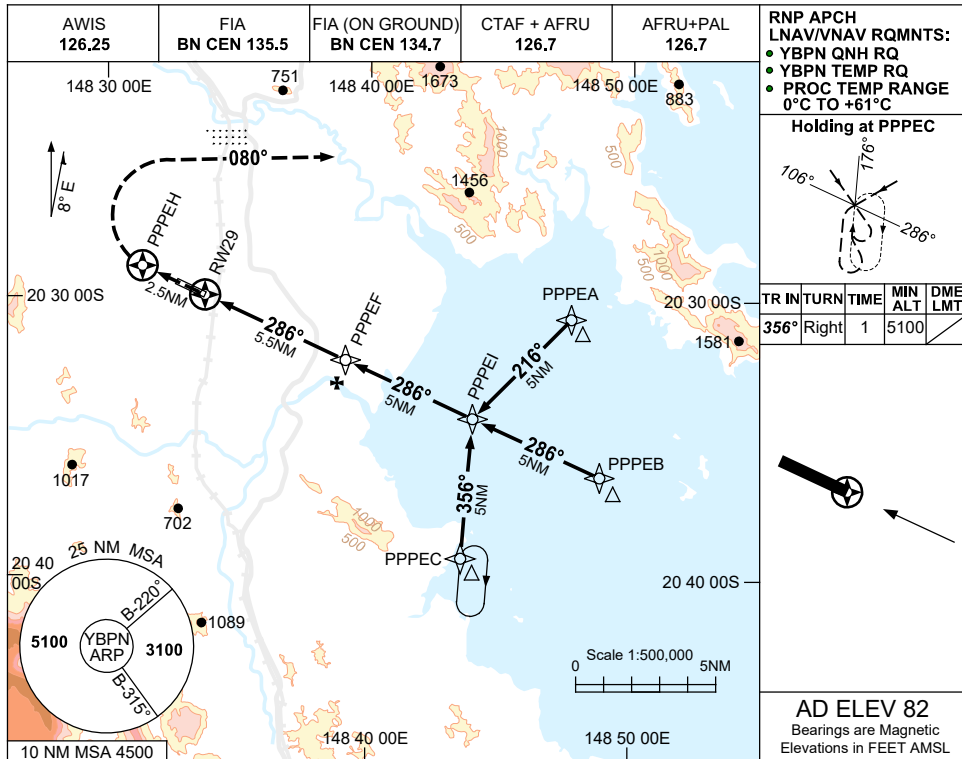
<p>SECTOR D</p> <p>115° PN VOR 213°</p>	<p style="text-align: right;">VOR</p>	<p>MISSED APPROACH:</p> <p>TURN LEFT, TRACK 113°. CLIMB TO 3100FT.</p>
NM FM VOR	25 15 13 10 8 6 5 4 0	
CIRCLING MINIMA	A,B: 910-2.4 C: 1030-4.0 D: 1420-5.0	
NM FM VOR	14.3 13 11 10 9 8 7 6 5 4 3	2.7 2 1.5 1.1
ALT (3° APCH PATH)	5100 4690 4050 3740 3420 3100 2780 2460 2150 1830 1510	1420 1190 1030 910

USE QNH

RNP RWY 29

24 MAR 2022

PROSERPINE/WHITSUNDAY COAST, QLD (YBPN)



NOTES

CATEGORY	A	B	C	D
LNAV/VNAV		430 (383-2.1)		
LNAV		620 (573-3.3)		
CIRCLING	800 (718-2.4)		1030 (948-4.0)	
ALTERNATE	(1218-4.4)		(1838-7.0)	

1. MAX IAS: INITIAL : 210K.T.
2. COLOUR: SEE SPEC NOTICES.

Changes: CHART TITLE, PBN SPECIFICATION BOX.

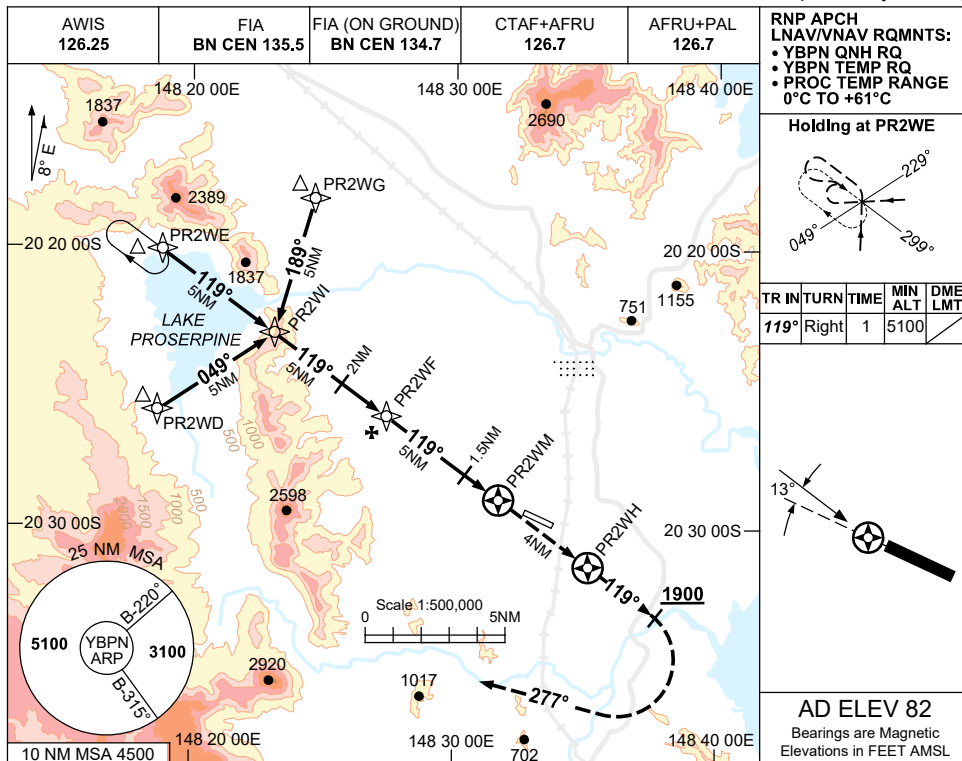
BPNGN01-170

USE QNH

RNP RWY 11

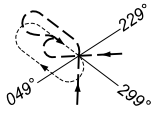
21 MAR 2024

PROSERPINE/WHITSUNDAY COAST, QLD (YBPN)

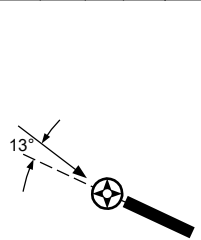


RNP APCH
LNAV/VNAV RQMNTS:
• YBPN QNH RQ
• YBPN TEMP RQ
• PROC TEMP RANGE
0°C TO +61°C

Holding at PR2WE



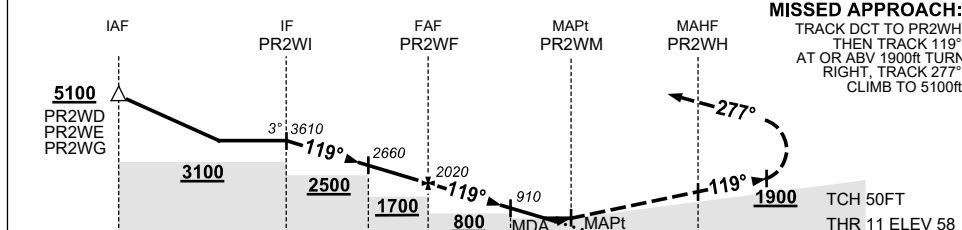
TR IN	TURN	TIME	MIN ALT	DME LMT
119°	Right	1	5100	



AD ELEV 82

Bearings are Magnetic
Elevations in FEET AMSL

NM TO NEXT WPT	PR2WI	4	3	2	1	PR2WF	4	3	2	1.5	0.8	0.4	PR2WM
ALT (3° APCH PATH)	3610	3300	2980	2660	2340	2020	1700	1380	1070	910	680	560	



MISSED APPROACH:
TRACK DCT TO PR2WH,
THEN TRACK 119°.
AT OR ABV 1900FT TURN
RIGHT, TRACK 277°.
CLIMB TO 5100ft.

NOTES

- MAX IAS:
INITIAL : 210KT.
MAP TURN : 200KT.
- HOLDING OVERLAPS
WITH YBWN
RNP S HOLDING.
ACFT SEPARATION
NOT ASSURED.
- COLOUR: SEE
SPEC NOTICES.

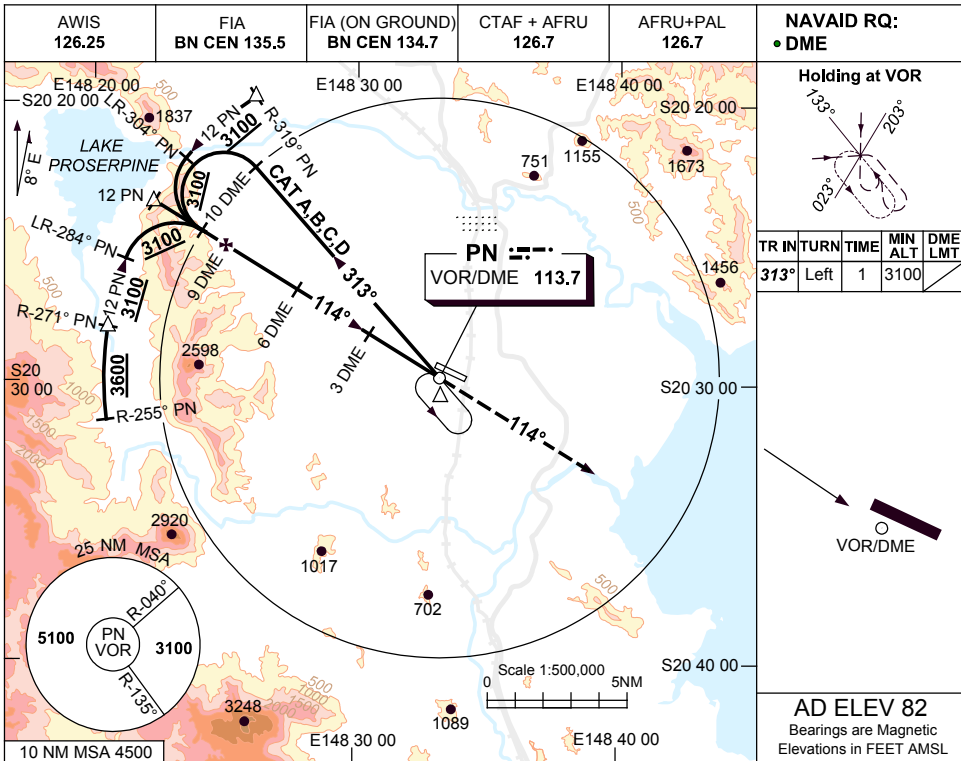
CATEGORY	A	B	C	D
LNAV/VNAV	560 (502-2.8)			
LNAV	680 (622-3.5)			
CIRCLING	800 (718-2.4)	1030 (948-4.0)	1420 (1338-5.0)	
ALTERNATE	(1218-4.4)	(1448-6.0)	(1838-7.0)	

Changes: NOTES.

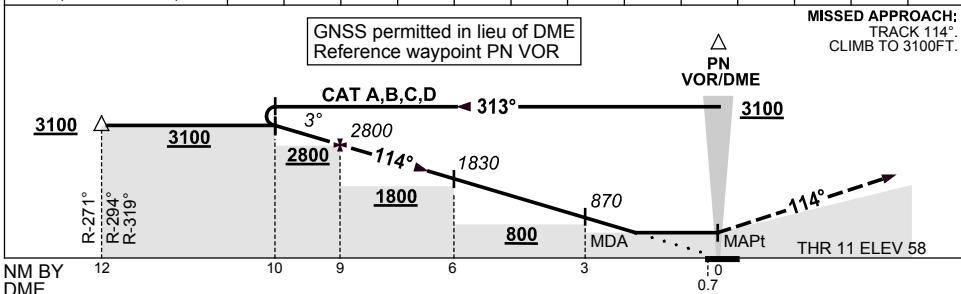
BPNGN02-178

USE QNH VOR RWY 11
PROSERPINE/WHITSUNDAY COAST, QLD (YBPN)

9 NOV 2017



DIST BY DME	10	9	8	7	6	5	4	3	2.4			
ALT (3° APCH PATH)	3100	2800	2470	2150	1830	1510	1190	870	680			



NOTES

CATEGORY	A	B	C	D
S-I VOR/DME	680 (622-3.5)			
CIRCLING	800 (718-2.4)	1030 (948-4.0)	1420 (1338-5.0)	
ALTERNATE	(1218-4.4)	(1448-6.0)	(1838-7.0)	

1. MAX IAS: INITIAL : 210KT.
2. COLOUR: SEE SPEC NOTICES.

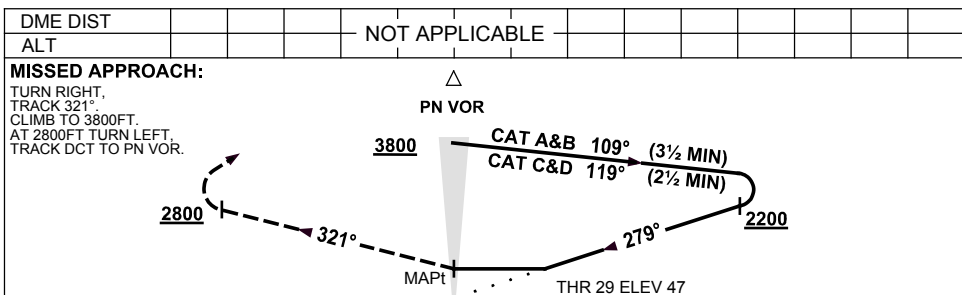
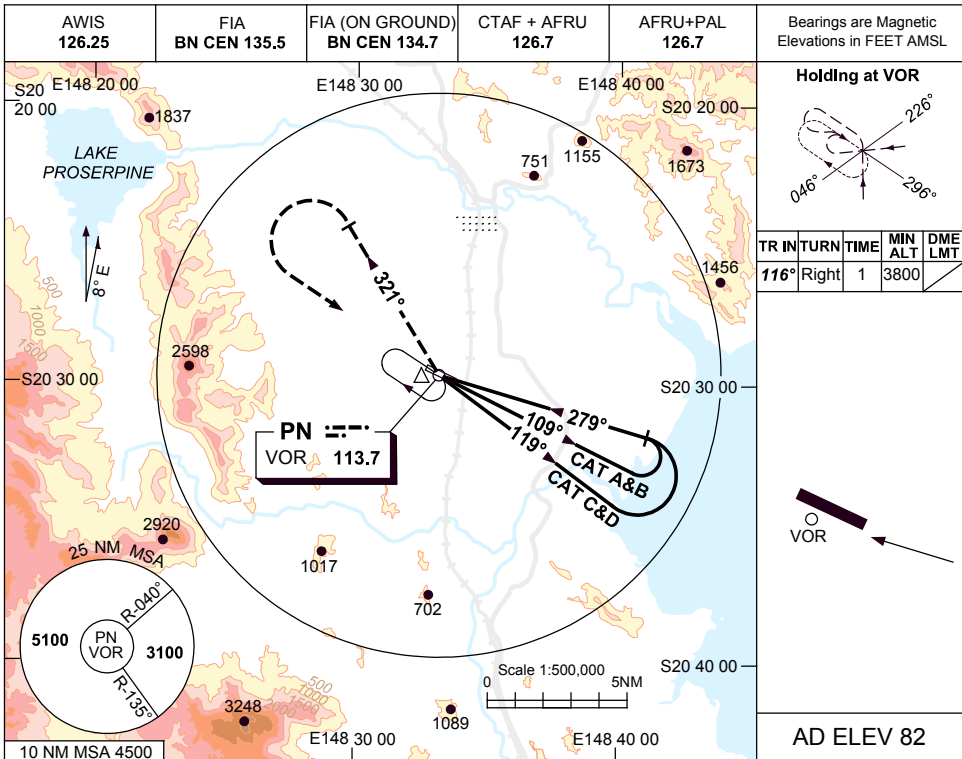
Changes: CAT D, CIRCLING & ALTN MNM.

BPNV001-153

USE QNH
PROSERPINE/WHITSUNDAY COAST, QLD (YBPN)

VOR RWY 29

9 NOV 2017



NOTES

CATEGORY	A	B	C	D
S-I VOR	660 (613-3.5)			
CIRCLING	800 (718-2.4)	1030 (948-4.0)	1420 (1338-5.0)	
ALTERNATE	(1218-4.4)	(1448-6.0)	(1838-7.0)	

1. MAX IAS: INITIAL ; CAT A&B 140KT. CAT C&D 210KT.
2. COLOUR: SEE SPEC NOTICES.

Changes: CAT D, CIRCLING & ALT MNM.

BPNVO03-153