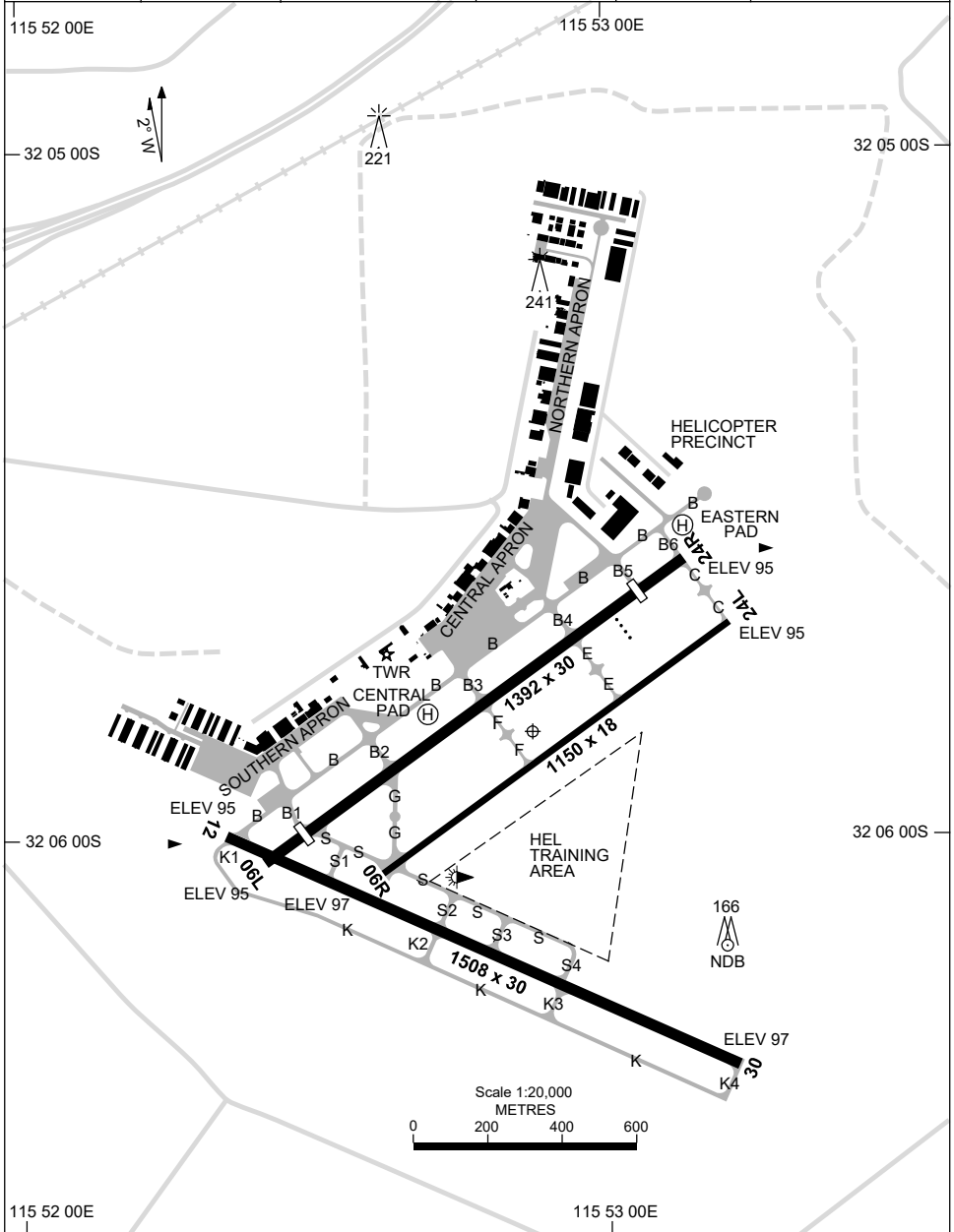


7 SEP 2023

AD ELEV 99
32 05 51S 115 52 52E

AERODROME CHART - Page 1
PERTH/JANDAKOT, WA (YPJT)

ATIS (AWIS AH) 128.65 281	SMC 124.3	TWR (CTAF+AFRU AH) 118.1	FIA PH CEN 135.25	PAL+AA (AH) 123.9	Bearings are Magnetic Elevations in FEET AMSL
------------------------------	--------------	-----------------------------	----------------------	----------------------	--



Changes: NEW APRON AND BUILDING.

PJTAD01-176

7 SEP 2023

AD ELEV 99
32 05 51S 115 52 52E

AERODROME CHART- Page 2
PERTH/JANDAKOT, WA (YPJT)

ATIS (AWIS AH) 128.65 281	SMC 124.3	TWR (CTAF+AFRU AH) 118.1	FIA PH CEN 135.25	PAL+AA (AH) 123.9	Bearings are Magnetic Elevations in FEET AMSL
------------------------------	--------------	-----------------------------	----------------------	----------------------	--

--	--	--	--	--	--

AERODROME LIGHTING					
---------------------------	--	--	--	--	--

RWY	ABN : FLG W 6 SEC TAXIWAY : BLUE EDGE TWY B, B1, B2, B3, B4, B5, B6, K, K1, K2, K3 AND K4. RL : PAL+AA 123.9 , SDBY (15 SEC).				
------------	---	--	--	--	--

06L ⁰⁵⁶ 236 24R	MIRL PAPI LEFT SIDE 3.0° 25FT MIRL
---	---

06R ⁰⁵⁶ 236 24L	NIL NIL
---	----------------

12 ¹¹⁶ 296 30	MIRL MIRL
---	------------------

<p>NOTES</p>					
---------------------	--	--	--	--	--

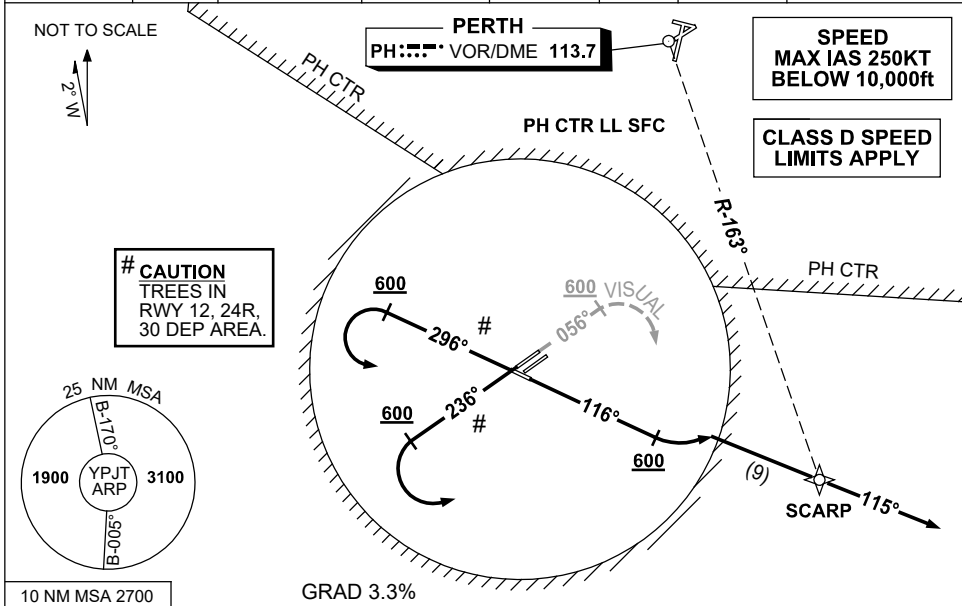
Changes: NOTES.

PJTAD02-176

**STANDARD INSTRUMENT DEPARTURES (SID)
SCARP FIVE DEP - RUNWAYS EAST
PERTH/JANDAKOT, WA (YPJT)**

23 MAR 2023

ATIS (AWIS AH) 128.65 281	SMC 124.3	TWR (CTAF+AFRU AH) 118.1	FIA PH CEN 135.25	APP (PH) 123.6 132.95	DEP (PH) 118.7	PAL+AA (AH) 123.9	Bearings are Magnetic Elevations in FEET AMSL
------------------------------	--------------	--------------------------------	----------------------	--------------------------	-------------------	----------------------	--



SCARP FIVE DEPARTURE

PROC NOT AVBL FROM RWY 06R/24L

RWY 06L (VISUAL) (RNAV)

- Track 056°
- After passing 600ft turn RIGHT visually to intercept and track 115° to SCARP
- Continue tracking 115°, thence as cleared

REQUIREMENTS RWY 06L:

- Minimum Cloud Base 700ft
- ACFT must remain visual within Jandakot CTR (3NM from ARP) until the end of initial turn.
- Visual segment terminated when established on track to intercept 115° to SCARP.
Cross JT CTR boundary AT or ABV 700ft.

RWY 24R (RNAV)

- Track 236°
- At passing 600ft turn LEFT to intercept and track 115° to SCARP
- Continue tracking 115°, thence as cleared

RWY 12 (RNAV)

- Track 116°
- After passing 600ft turn LEFT to intercept and track 115° to SCARP
- Continue tracking 115°, thence as cleared

RWY 30 (RNAV)

- Track 296°
- After passing 600ft turn LEFT to intercept and track 115° to SCARP
- Continue tracking 115°, thence as cleared

COMMUNICATIONS FAILURE PROCEDURE

On recognition of communications failure

- Squawk 7600
- Maintain procedure track for two minutes, and
- CLIMB IF NECESSARY TO MINIMUM SAFE ALTITUDE, to maintain terrain clearance, then
- Proceed in accordance with the latest ATC route clearance acknowledged.

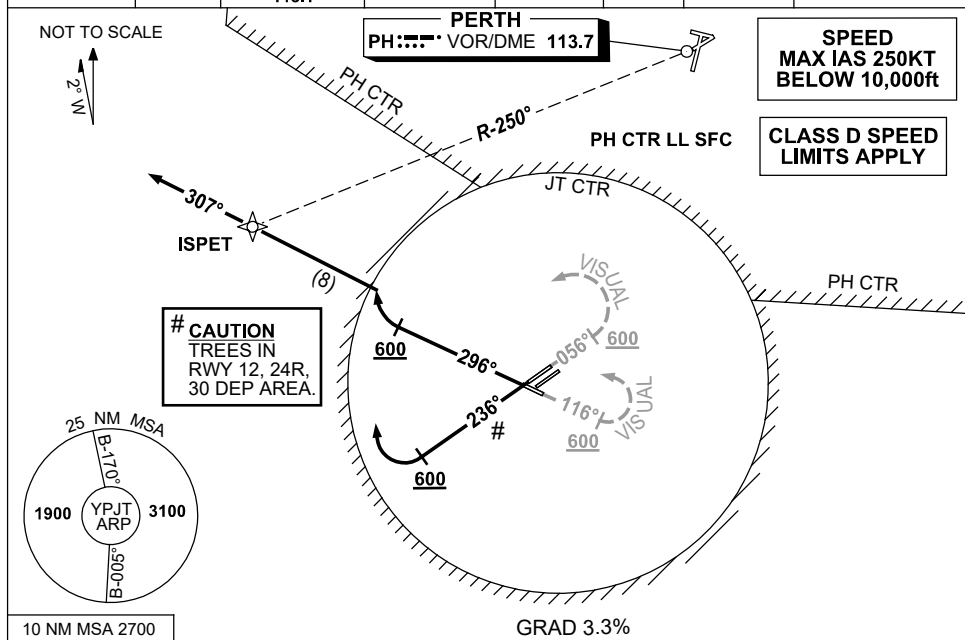
Changes: CHART TITLE, RQNMNTS NOTES, REF TO JT NDB REMOVED, MSA.

PJTDPO1-174

**STANDARD INSTRUMENT DEPARTURES (SID)
ISPET ONE DEP - RUNWAYS WEST
PERTH/JANDAKOT, WA (YPJT)**

15 JUN 2023

ATIS (AWIS AH) 128.65 281	SMC 124.3	TWR (CTAF+AFRU AH) 118.1	FIA PH CEN 135.25	APP (PH) 123.6 132.95	DEP (PH) 118.7	PAL+AA (AH) 123.9	Bearings are Magnetic. Elevations in FEET AMSL
------------------------------	--------------	--------------------------------	----------------------	--------------------------	-------------------	----------------------	---



ISPET ONE DEPARTURE
PROC NOT AVBL FROM RWY 06R/24L

- RWY 06L (VISUAL) (RNAV)**
- Track 056°
 - After passing 600ft turn LEFT visually to intercept and track 307° to ISPET
 - Continue tracking 307° thence as cleared.

- RWY 12 (VISUAL) (RNAV)**
- Track 116°
 - After passing 600ft turn LEFT visually to intercept and track 307° to ISPET
 - Continue tracking 307° thence as cleared.

- REQUIREMENTS RWY 06L, RWY 12:**
- Minimum Cloud Base 700ft
 - ACFT must remain VISUAL within Jandakot CTR (3NM from ARP) until the end of initial turn.
 - Visual segment terminated when established on track to intercept 307° to ISPET. Cross JT CTR boundary AT or ABV 700ft

- RWY 24R (RNAV)**
- Track 236°
 - After passing 600ft turn RIGHT to intercept and track 307° to ISPET
 - Continue tracking 307° thence as cleared.

- RWY 30 (RNAV)**
- Track 296°
 - After passing 600ft turn RIGHT to intercept and track 307° to ISPET
 - Continue tracking 307° thence as cleared.

COMMUNICATIONS FAILURE PROCEDURE

- On recognition of communications failure
- Squawk 7600
 - Maintain procedure track for two minutes, and
 - CLIMB IF NECESSARY TO MINIMUM SAFE ALTITUDE, to maintain terrain clearance, then
 - Proceed in accordance with the latest ATC route clearance acknowledged.

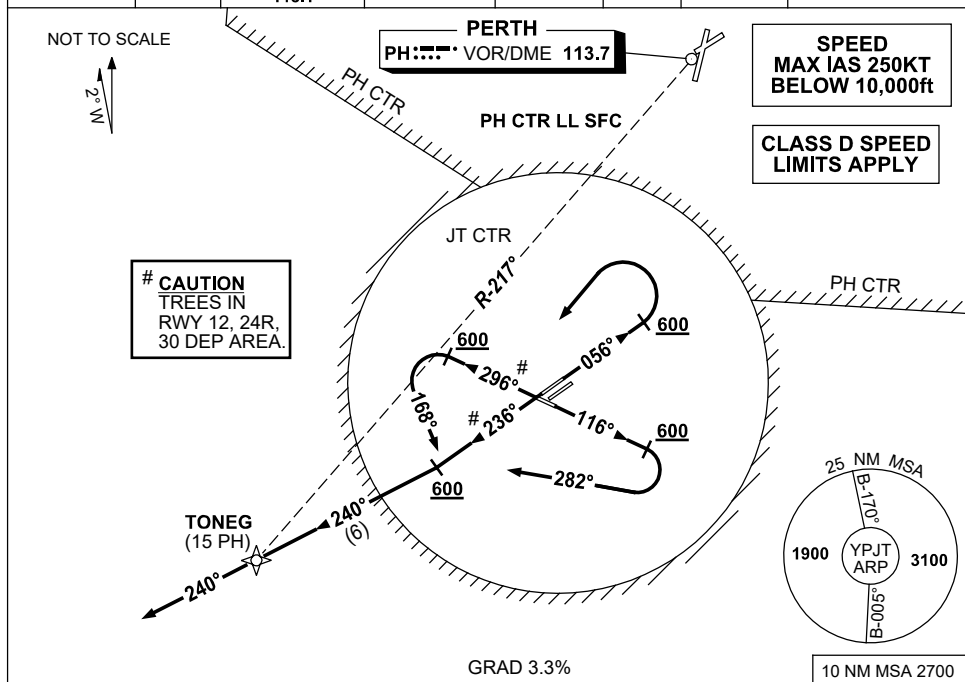
Changes: CHART TITLE, WPT ISPET.

PJTDPO2-175

**STANDARD INSTRUMENT DEPARTURES (SID)
TONEG FOUR DEP - RUNWAYS WEST
PERTH/JANDAKOT, WA (YPJT)**

15 JUN 2023

ATIS (AWIS AH) 128.65 281	SMC 124.3	TWR (CTAF+AFRU AH) 118.1	FIA PH CEN 135.25	APP (PH) 123.6 132.95	DEP (PH) 118.7	PAL+AA (AH) 123.9	Bearings are Magnetic Elevations in FEET AMSL
------------------------------	--------------	--------------------------------	----------------------	--------------------------	-------------------	----------------------	--



TONEG FOUR DEPARTURE

RWY 06L (RNAV)
MAX IAS 150KT until established to intercept TRK to TONEG

- Track 056°
- AT or ABV 600ft turn LEFT to intercept and track 240° to TONEG
- Continue tracking 240° thence as cleared.

RWY 24R (RNAV)

- Track 236°
- AT or ABV 600ft, intercept and track 240° to TONEG
- Continue tracking 240° thence as cleared.

RWY 12 (RNAV)
MAX IAS 150KT until established to intercept TRK to TONEG

- Track 116°
- AT or ABV 600ft turn RIGHT track 282°
- Intercept and track 240° to TONEG
- Continue tracking 240° thence as cleared.

RWY 30 (RNAV)
MAX IAS 150KT until established to intercept TRK to TONEG

- Track 296°
- AT or ABV 600ft, turn LEFT track 168°
- Intercept and track 240° to TONEG
- Continue tracking 240° thence as cleared.

COMMUNICATIONS FAILURE PROCEDURE

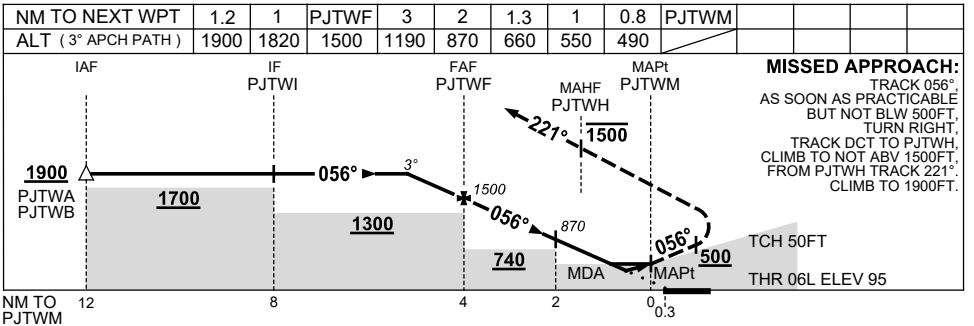
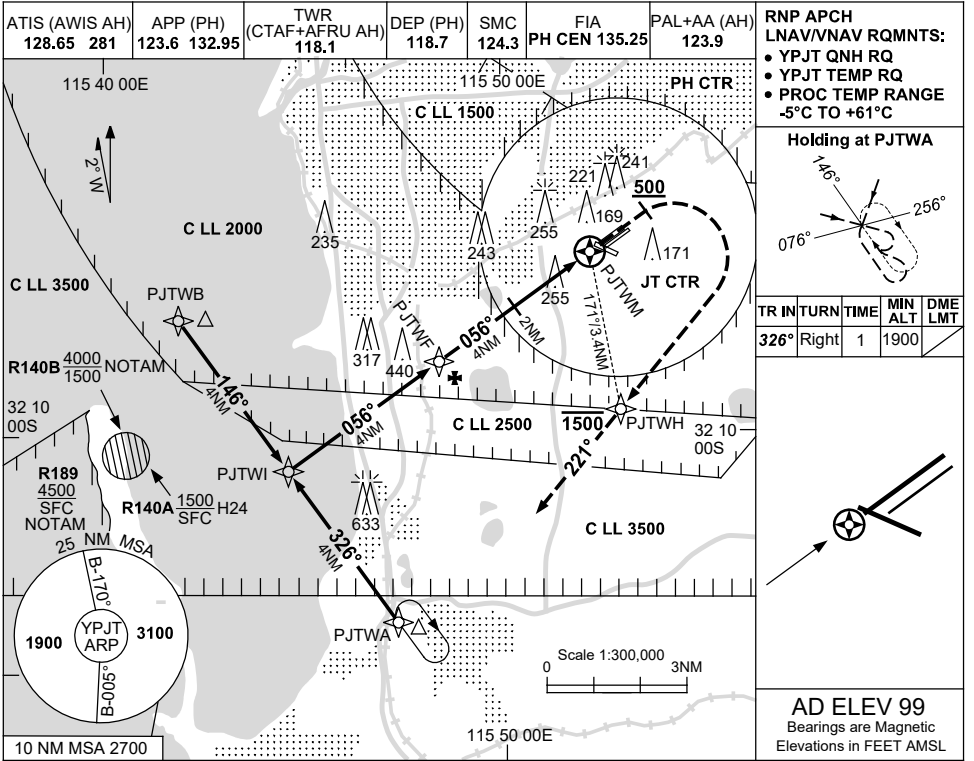
- On recognition of communications failure
- Squawk 7600
 - Maintain procedure track for two minutes, and
 - CLIMB IF NECESSARY TO MINIMUM SAFE ALTITUDE, to maintain terrain clearance, then
 - Proceed in accordance with the latest ATC route clearance acknowledged.

USE QNH

RNP RWY 06L

7 SEP 2023

PERTH/JANDAKOT, WA (YPJT)



NOTES

CATEGORY	A	B	C	D
LNAV/VNAV	490 (395-2.2)		NOT APPLICABLE	
LNAV	660 (561-3.1)			
CIRCLING	800 (701-2.4)			
ALTERNATE	(1201-4.4)			

1. MAX IAS : HOLDING: 160KT.
2. ACFT ARE TO REACH 1500FT OR BELOW AS SOON AS PRACTICABLE AFTER PASSING FAF.
3. PROC NOT AVBL FOR TRAINING.

Changes: CHART TITLE, PBN SPECIFICATION BOX, Editorial.

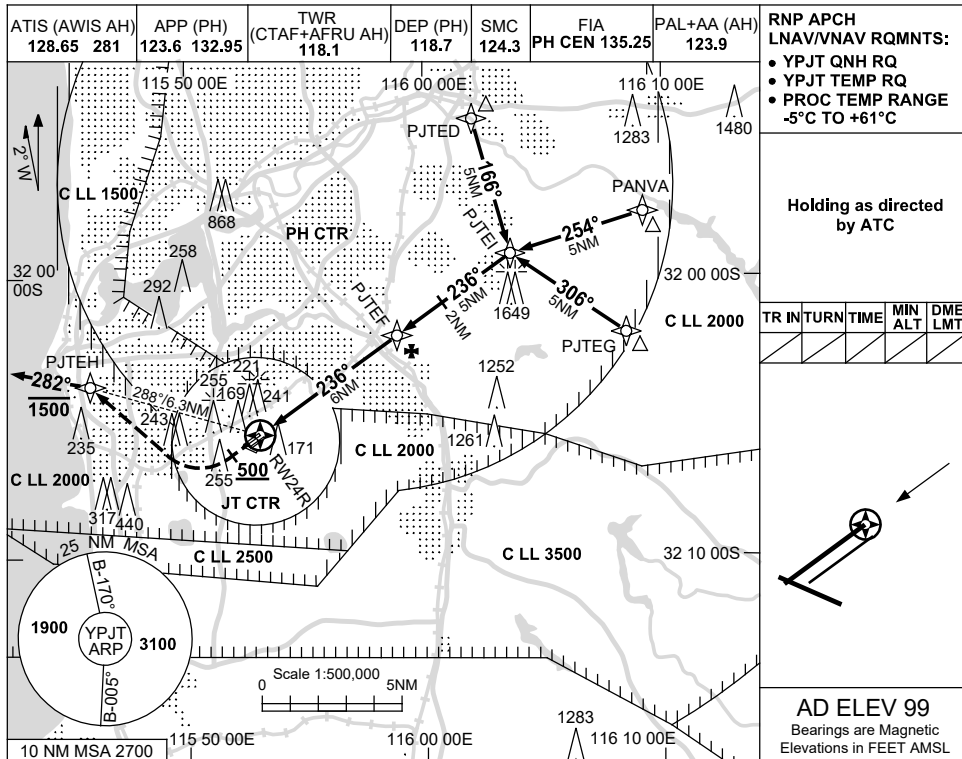
PJTGN01-176

USE QNH

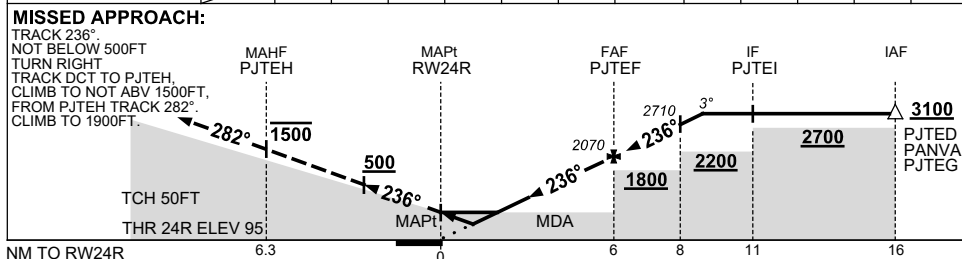
RNP RWY 24R

30 NOV 2023

PERTH/JANDAKOT, WA (YPJT)



NM TO NEXT WPT	RW24R	1	1.6	2	3	4	5	PJTEF	1	2	3	3.2
ALT (3° APCH PATH)		470	660	780	1100	1420	1740	2070	2390	2710	3030	3100



NOTES

CATEGORY	A	B	C	D
LNAV/VNAV	470 (375-2.1)			NOT APPLICABLE
LNAV	660 (561-3.1)			
CIRCLING	800 (701-2.4)		880 (781-4.0)	
ALTERNATE	(1201-4.4)		(1281-6.0)	

- MAX IAS: INITIAL MAP TURN: 210KT.
- PROC NOT AVBL FOR TRAINING.

Changes: PANVA REPLACES KALAM, Editorial.

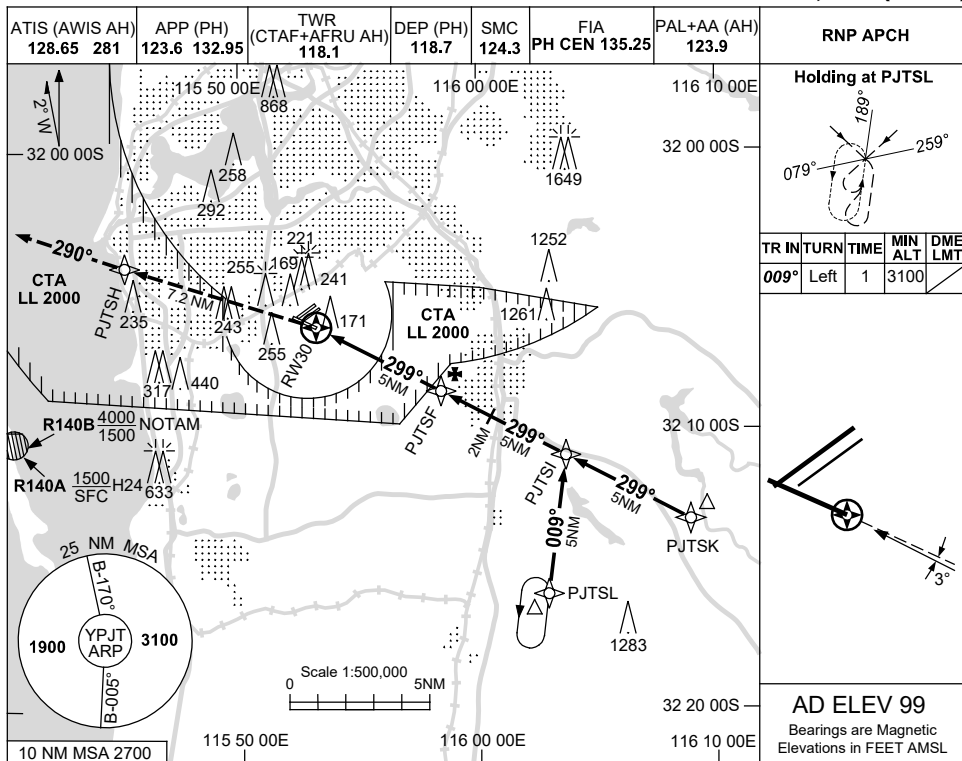
PJTGN02-177

USE QNH

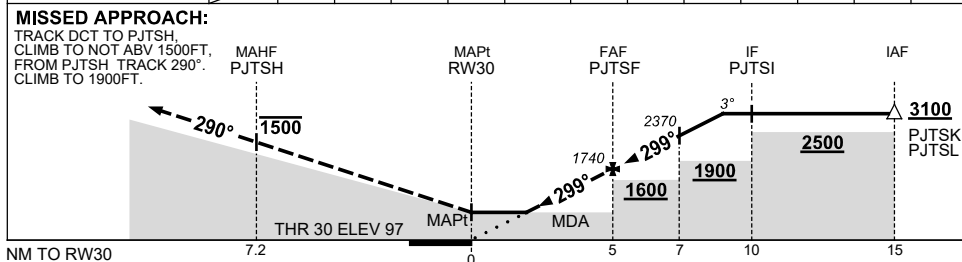
RNP RWY 30

7 SEP 2023

PERTH/JANDAKOT, WA (YPJT)



NM TO NEXT WPT	RW30	1.6	2	3	4	PJTSF	1	2	3	4	4.3	
ALT (3° APCH PATH)		660	780	1100	1420	1740	2050	2370	2690	3010	3100	



NOTES

CATEGORY	A	B	C	D
LNAV	660 (561-3.2)		NOT APPLICABLE	
CIRCLING	800 (701-2.4)			
ALTERNATE	(1201-4.4)			

1. TO REMAIN CLEAR OF CTA LL 2000, DO NOT EXCEED 3° DESCENT PROFILE.
2. PROC NOT AVBL FOR TRAINING.

Changes: CHART TITLE, PBN SPECIFICATION BOX, Editorial.

PJTGN03-176

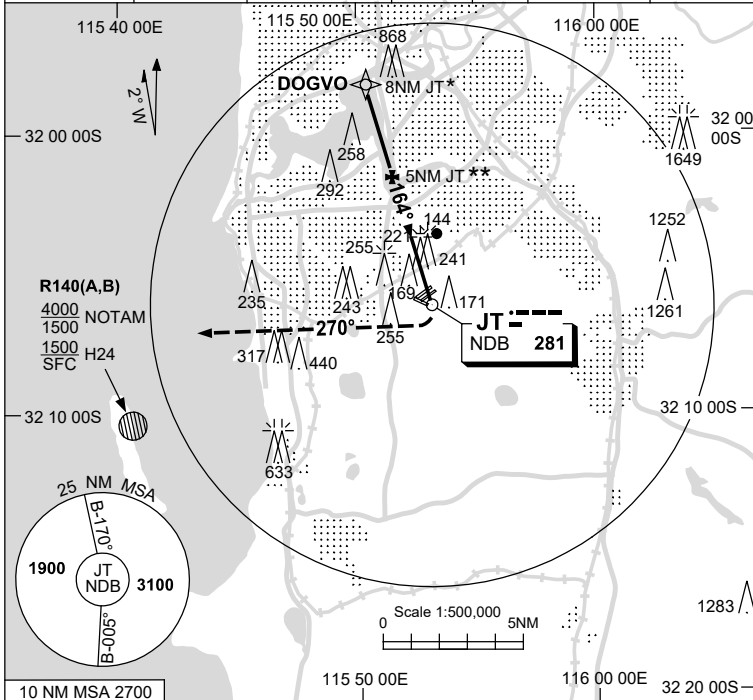
USE QNH

NDB-A

30 NOV 2023

PERTH/JANDAKOT, WA (YPJT)

ATIS (AWIS AH) 128.65 281	APP (PH) 123.6 132.95	TWR (CTAF+AFR UH) 118.1	DEP (PH) 118.7	SMC 124.3	FIA PH CEN 135.25	PAL+AA (AH) 123.9	Bearings are Magnetic Elevations in FEET AMSL
------------------------------	--------------------------	----------------------------	-------------------	--------------	----------------------	----------------------	--



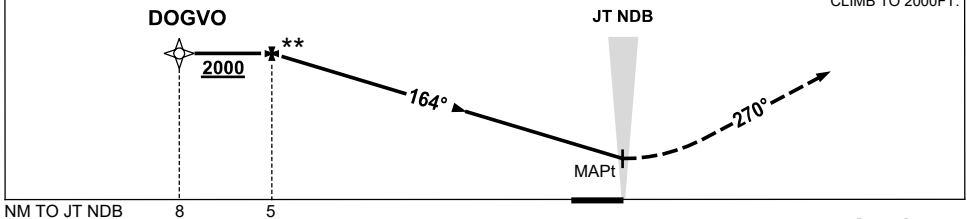
Holding as directed by ATC

TR IN	TURN	TIME	MIN ALT	DME LMT
/	/	/	/	/

AD ELEV 99

DME DIST										
ALT	NOT APPLICABLE									

MISSED APPROACH:
TURN RIGHT,
TRACK 270°
CLIMB TO 2000FT.



NOTES

- *1. ACFT WILL BE RADAR VECTORED TO INTERCEPT FINAL TRACK BETWEEN 8NM & 5NM JT.
- **2. WHEN ESTABLISHED RADAR WILL ADVISE DESCENT CLEARANCE FROM 2000FT, INSIDE 5NM JT.

CATEGORY	A	B	C	D
				NOT APPLICABLE
CIRCLING	800 (701-2.4)		880 (781-4.0)	
ALTERNATE	(1201-4.4)		(1281-6.0)	

Changes: DOGVO REPLACES PARKS, Editorial.

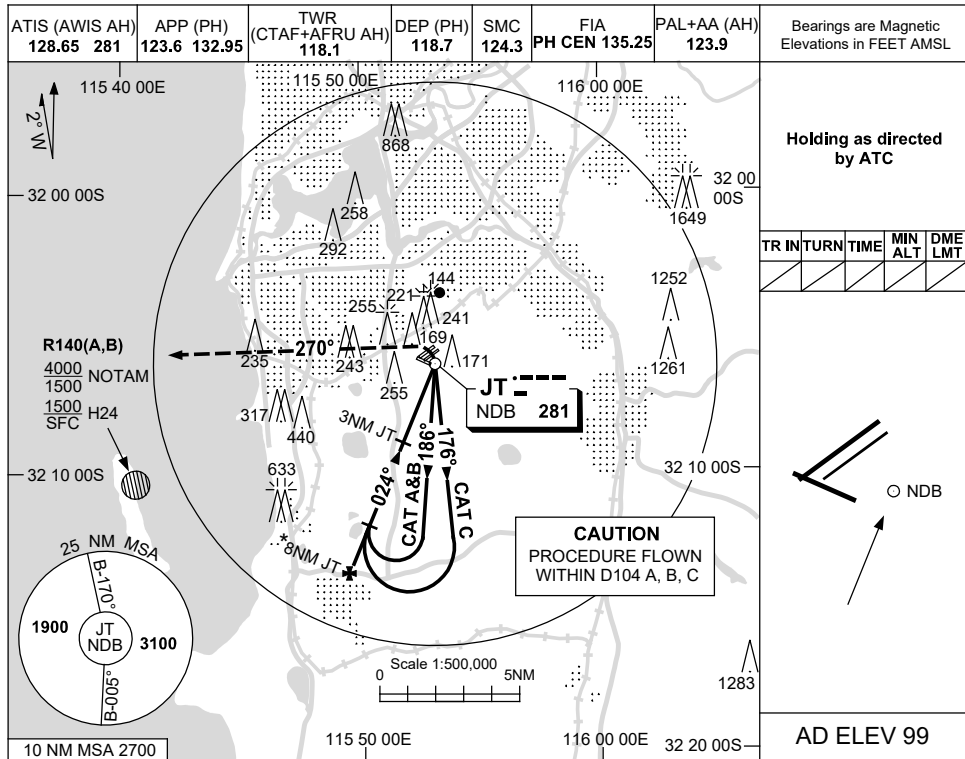
PJTNB01-177

USE QNH

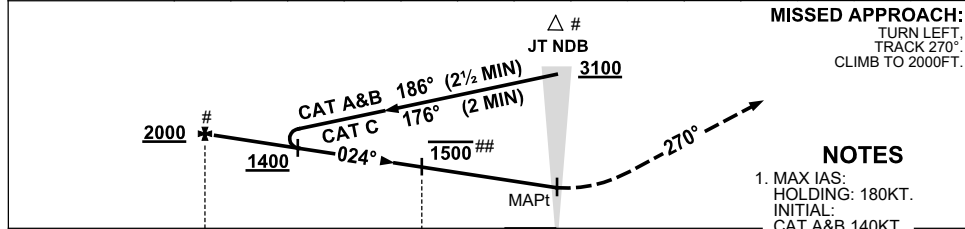
NDB-B

16 JUN 2022

PERTH/JANDAKOT, WA (YPJT)



DME DIST	ALT	NOT APPLICABLE
----------	-----	----------------



1. MAX IAS:
HOLDING: 180KT.
INITIAL:
CAT A&B 140KT.
CAT C 180KT.
- * 2. ACFT MAY BE RADAR
VECTORED TO FAF BY
RAS.
- # 3. ACFT TO CONTACT JT
TOWER BEFORE
DESCENT BELOW
2000FT WHEN CTR
ACTIVATED.
- ## 4. ACFT ARE TO REACH
1500FT OR BELOW AS
SOON AS PRACTICABLE
WHEN ESTABLISHED
INBOUND.

CATEGORY	A	B	C	D
CIRCLING #	800 (701-2.4)		880 (781-4.0)	
ALTERNATE	(1201-4.4)		(1281-6.0)	
	NOT APPLICABLE			

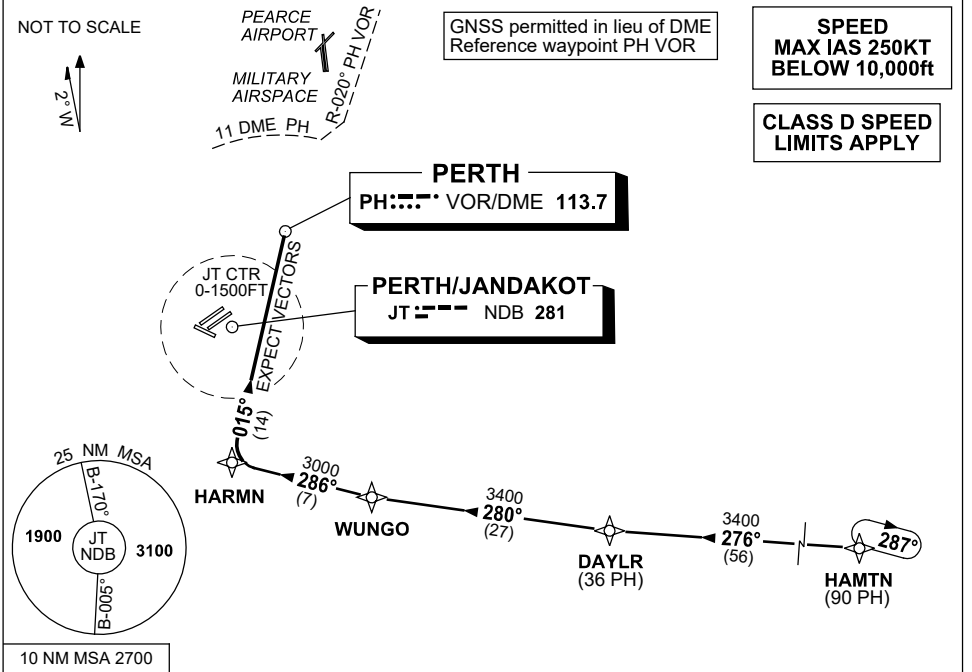
Changes: 241FT LIT OBST

PJTNB02-171

**STANDARD INSTRUMENT ARRIVAL (STAR)
JANDAKOT TWO WHISKEY ARRIVAL (RNAV)
PERTH/JANDAKOT, WA (YPJT)**

24 MAR 2022

ATIS (AWIS AH) 128.65 281	SMC 124.3	TWR (CTAF+AFRU AH) 118.1	FIA PH CEN 135.25	APP (PH) 123.6 132.95	DEP (PH) 118.7	PAL+AA (AH) 123.9	Bearings are Magnetic Elevations in FEET AMSL
------------------------------	--------------	--------------------------------	----------------------	--------------------------	-------------------	----------------------	--



TRANSITIONS:

- HAMTN:**
(NON-JET)
- From HAMTN track 276° to DAYLR
 - Turn RIGHT, track 280° to WUNGO
 - Then follow ARRIVAL instructions

ARRIVAL: JANDAKOT TWO WHISKEY

- From WUNGO turn RIGHT
- Track 286° to HARMN
 - Turn RIGHT, track 015° to PH VOR
 - Expect radar vectors to YPJT

COMMUNICATIONS FAILURE: PROCEDURE IN IMC

- Squawk 7600
- Comply with vertical navigation requirements and maintain minimum safe altitude.
- IF UNDER PILOT NAVIGATION track via the STAR clearance to Jandakot NDB, then in accordance with ERSA, EMERG.
- IF UNDER RADAR VECTOR, maintain vector for 2 minutes, then track to the Jandakot NDB, then in accordance with ERSA, EMERG.

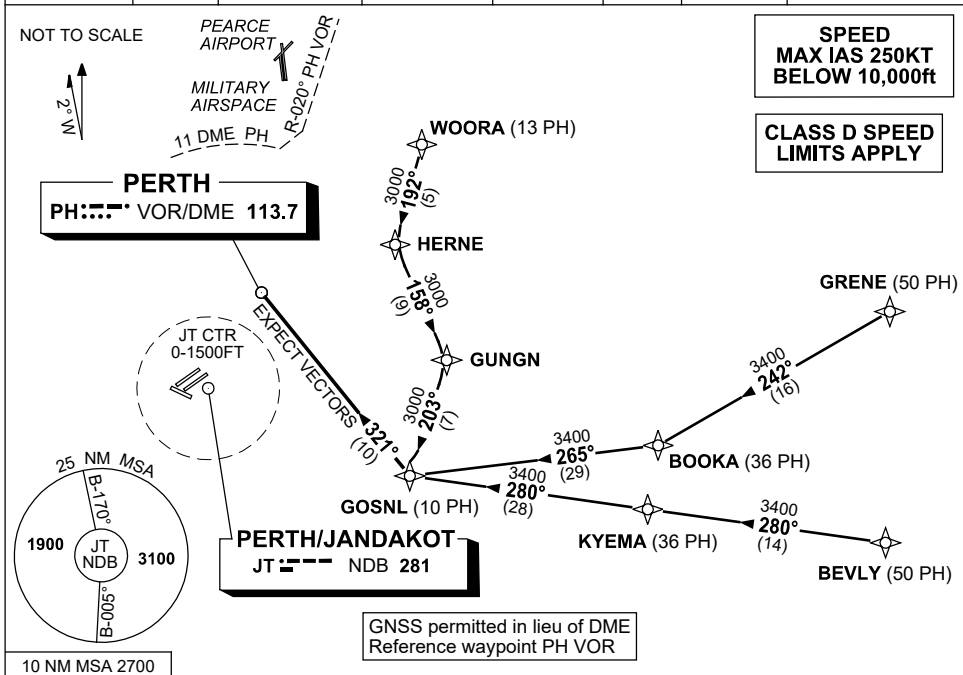
Changes: PAL+AA, Editorial.

PJTSR01-170

**STANDARD INSTRUMENT ARRIVAL (STAR)
JANDAKOT TWO GOLF ARRIVAL (RNAV)
PERTH/JANDAKOT, WA (YPJT)**

24 MAR 2022

ATIS (AWIS AH) 128.65 281	SMC 124.3	TWR (CTAF+AFRU AH) 118.1	FIA PH CEN 135.25	APP (PH) 123.6 132.95	DEP (PH) 118.7	PAL+AA (AH) 123.9	Bearings are Magnetic Elevations in FEET AMSL
------------------------------	--------------	--------------------------------	----------------------	--------------------------	-------------------	----------------------	--



TRANSITIONS:

- WOORA:** From WOORA to GOSNL
- Track 192° to HERNE,
 - Turn LEFT, track 158° to GUNGN,
 - Turn RIGHT, track 203° to GOSNL,
Then follow ARRIVAL instructions

- GRENE:** From GRENE to GOSNL
(NON-JET)
- Track 242° to BOOKA,
 - Turn RIGHT, track 265° to GOSNL,
Then follow ARRIVAL instructions

- BEVLY:** From BEVLY to GOSNL
(JET)
- Track 280° to KYEMA,
 - Track 280° to GOSNL,
Then follow ARRIVAL instructions

- ARRIVAL:** **JANDAKOT TWO GOLF**
- From GOSNL, turn RIGHT, track 321° to PH VOR
- Expect radar vectors to YPJT

COMMUNICATIONS FAILURE: PROCEDURE IN IMC

- Squawk 7600
- Comply with vertical navigation requirements and maintain minimum safe altitude.
- IF UNDER PILOT NAVIGATION track via the STAR clearance to Jandakot NDB, then in accordance with ERSA, EMERG.
- IF UNDER RADAR VECTOR, maintain vector for 2 minutes, then track to the Jandakot NDB, then in accordance with ERSA, EMERG.

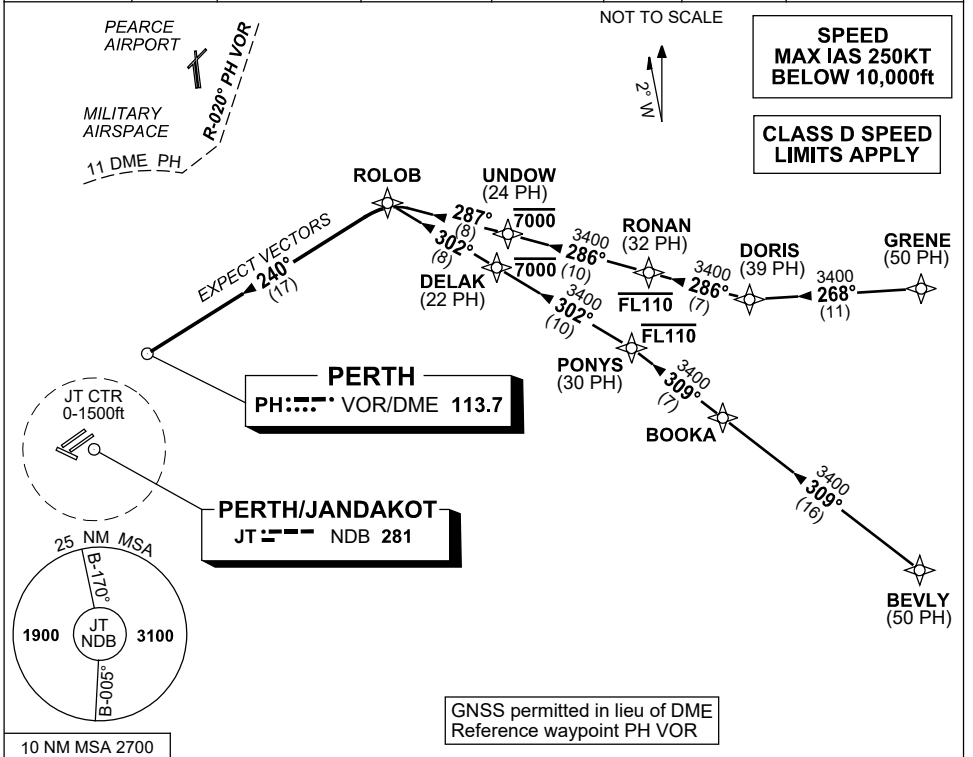
Changes: PAL+AA, Editorial.

PJTSR02-170

**STANDARD INSTRUMENT ARRIVAL (STAR)
JANDAKOT TWO ROMEO ARRIVAL (RNAV)
PERTH/JANDAKOT, WA (YPJT)**

24 MAR 2022

ATIS (AWIS AH) 128.65 281	SMC 124.3	TWR (CTAF+AFRU AH) 118.1	FIA PH CEN 135.25	APP (PH) 123.6 132.95	DEP (PH) 118.7	PAL+AA (AH) 123.9	Bearings are Magnetic Elevations in FEET AMSL
------------------------------	--------------	--------------------------------	----------------------	--------------------------	-------------------	----------------------	--



TRANSITIONS:

GRENE: From GRENE, track 268° to DORIS, (NON-JET) • Turn RIGHT, track 286° to RONAN, Cross RONAN AT or BLW FL110, • Track 286° to UNDOU, Cross UNDOU AT or BLW 7000ft, • Track 287° to ROLOB, Then follow ARRIVAL instructions

BEVLY: From BEVLY, track 309° to BOOKA, (JET) • Track 309° to PONY, Cross PONY AT or BLW FL110, • Turn LEFT, track 302° to DELAK, Cross DELAK AT or BLW 7000ft, • Track 302° to ROLOB, Then follow ARRIVAL instructions

ARRIVAL: JANDAKOT TWO ROMEO

- From ROLOB turn LEFT
- Track 240° to PH VOR
 - Expect radar vectors to YPJT

COMMUNICATIONS FAILURE: PROCEDURE IN IMC

- Squawk 7600
- Comply with vertical navigation requirements and maintain minimum safe altitude.
- IF UNDER PILOT NAVIGATION track via the STAR clearance to Jandakot NDB, then in accordance with ERSA, EMERG.
- IF UNDER RADAR VECTOR, maintain vector for 2 minutes, then track to the Jandakot NDB, then in accordance with ERSA, EMERG.

Changes: PAL+AA, Editorial.

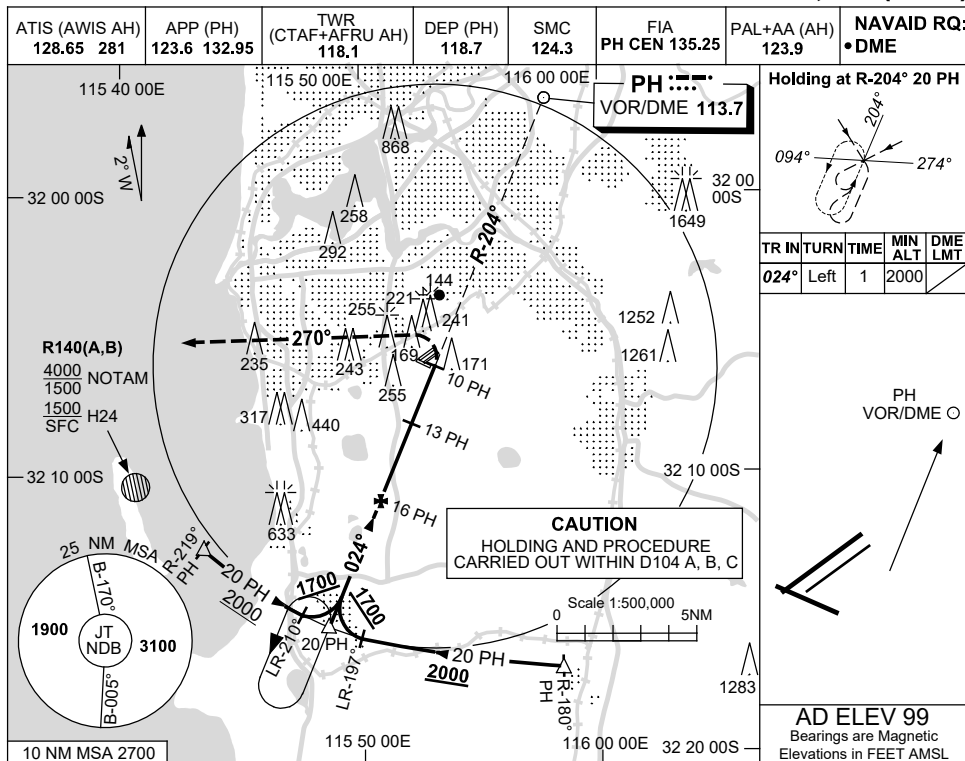
PJTSR03-170

USE QNH

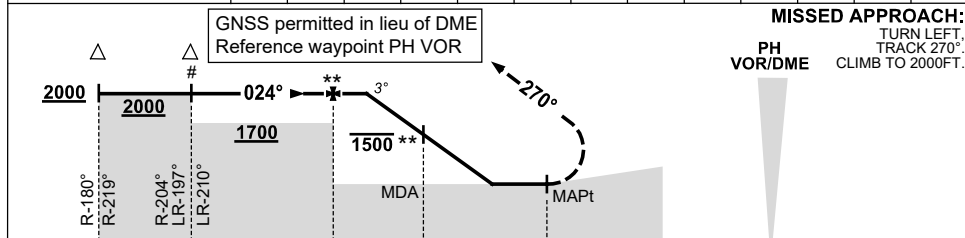
VOR-A

16 JUN 2022

PERTH/JANDAKOT, WA (YPJT)



DIST TO PH DME	14.6	14	13	12	11	10.7								
ALT (3° APCH PATH)	2000	1820	1500	1200	880	800								



NM TO PH DME

NOTES

#1. ACFT TO CONTACT JT TOWER BEFORE DESCENT BELOW 2000FT WHEN CTR ACTIVATED.

**2. ACFT ARE TO REACH 1500FT OR BELOW AS SOON AS PRACTICABLE AFTER PASSING FAF AND BY NO LATER THAN 13 DME PH.

CATEGORY	A	B	C	D
CIRCLING	800 (701-2.4)		880 (781-4.0)	NOT APPLICABLE
ALTERNATE	(1201-4.4)		(1281-6.0)	

Changes: 241FT LIT OBST.

PJTVO01-171