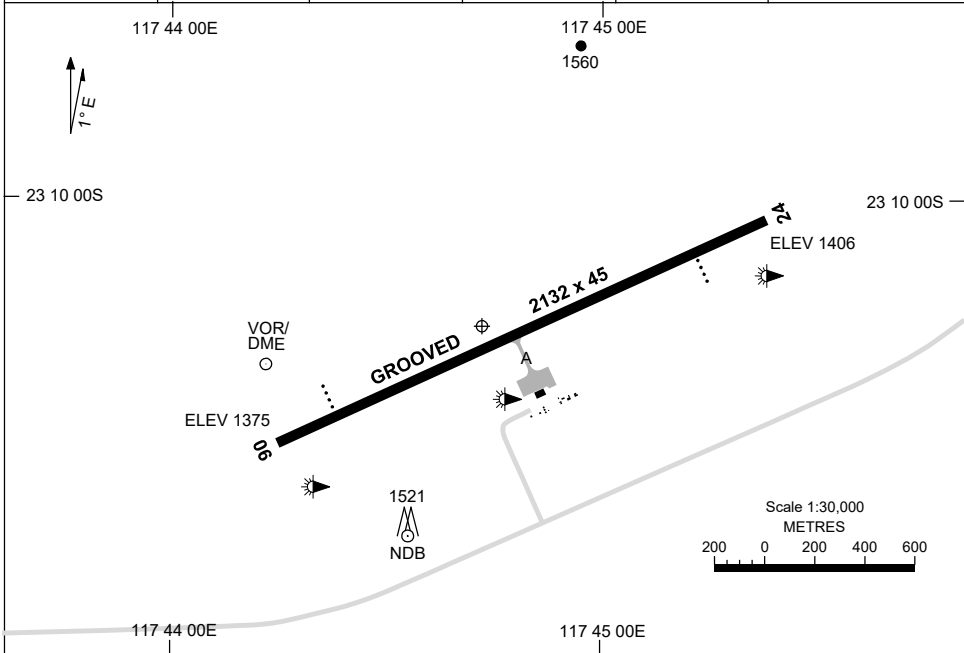


21 MAR 2024

AD ELEV 1046  
23 10 16S 117 44 43E

AERODROME CHART  
**PARABURDOO, WA (YPBO)**

AWIS 135.6	FIA ML CEN 125.7	CTAF+AFRU 126.8	AFRU+PAL 126.8		Bearings are Magnetic Elevations in FEET AMSL
---------------	---------------------	--------------------	-------------------	--	--



AERODROME LIGHTING	
RWY	TAXIWAY : BLUE EDGE
	RL : AFRU+PAL 126.8 , SDBY (10 SEC) , PTBL (120 MIN PN)
06 <sup>064</sup>	PAPI 3.0° 50FT LIRL PTBL
<sup>244</sup> 24	PAPI 3.0° 50FT LIRL PTBL

**NOTES**

Changes: Editorial.

PBOAD01-178

# DME or GNSS ARRIVAL PROCEDURES PARABURDOO, WA (YPBO) Page 1

23 MAR 2023

AWIS 135.6	FIA ML CEN 125.7	CTAF+AFRU 126.8	AFRU+PAL 126.8		Bearings are Magnetic Elevations in FEET AMSL
---------------	---------------------	--------------------	-------------------	--	--

25 NM MSA  
5200  
4100

**DME USING PBO DME  
REFERENCE WAYPOINT PBO VOR**

PBO VOR/DME 116.9  
PBO NDB 278

\* NO CIRCLING SOUTH OF RWY 06/24 BEYOND 3NM.

AD ELEV 1406

**WEBBA TO PBO**

PBO VOR or NDB

VOR or NDB

5200 4700 4000 3700 3070 2700 2570 2500

3° 4980 4660 3710 3070

MDA MAPT

**MISSED APPROACH:**

TRACK 159°.  
CLIMB TO 4100FT.

NM FM VOR	25	15	13	10	9	6	4	0						
<b>CIRCLING MINIMA</b>	A,B: 2340-2.4		C: 2500-4.0		D: 2570-5.0									
NM FM VOR	10.7	10	9	8	7	6	5	4	3	2.4	2.2	2	1.7	
ALT (3° APCH PATH)	5200	4980	4660	4350	4030	3710	3390	3070	2750	2570	2500	2440	2340	

**NWN TO PBO**

PBO VOR or NDB

VOR or NDB

4100 3300 3000 3070 2750 2600 2500 2340

3° 3710 3390 3070 2750

MDA MAPT

**MISSED APPROACH:**

CLIMB ON TRACK TO 4100FT.

NM FM VOR	25	15		8	6	5	4	3	0					
<b>CIRCLING MINIMA</b>	A,B: 2340-2.4		C: 2500-4.0		D: 2570-5.0									
NM FM VOR	7.2	6	5	4	3	2.4	2.2	2	1.7					
ALT (3° APCH PATH)	4100	3710	3390	3070	2750	2570	2500	2440	2340					

**SECTOR A**

PBO VOR or NDB

VOR or NDB

5200 4400 3800 3000 3230 2920 2570 2470

3° 5140 3870 3230

MDA MAPT

**MISSED APPROACH:**

TURN LEFT.  
TRACK 110°.  
CLIMB TO 5200FT.

**MAX IAS:** 180KT UNTIL ESTABLISHED ON 110°

NM FM VOR	25	15	13	10	6	4	0							
<b>CIRCLING MINIMA</b>	A,B: 2470-2.4		C: 2500-4.0		D: 2570-5.0									
NM FM VOR	10.2	10	9	8	7	6	5	4	3	1.9	1.7	1.6		
ALT (3° APCH PATH)	5200	5140	4830	4500	4190	3870	3550	3230	2920	2570	2500	2470		

Changes: UNICOM REMOVED.

PBODG01-174

# DME or GNSS ARRIVAL PROCEDURES PARABURDOO, WA (YPBO) Page 2

23 MAR 2023

AWIS 135.6	FIA ML CEN 125.7	CTAF+AFRU 126.8	AFRU+PAL 126.8		Bearings are Magnetic Elevations in FEET AMSL
---------------	---------------------	--------------------	-------------------	--	--

25 NM MSA  
5200  
R-299°  
B-179°  
PBO VOR/DME  
R-085°  
B-265°  
NDB  
4100

**DME USING PBO DME  
REFERENCE WAYPOINT PBO VOR**

PBO VOR/DME 116.9  
PBO NDB 278

\* NO CIRCLING SOUTH OF RWY 06/24 BEYOND 3NM.

AD ELEV 1406

**SECTOR B**

PBO VOR or NDB  
035°  
030°

VOR or NDB  
4100  
3100  
3140  
MDA  
MAPt  
5200  
030°

**MISSED APPROACH:**

TURN AS APPROPRIATE,  
TRACK 030°. CLIMB TO 5200FT.

NM FM VOR	25	15				6	5	3	0											
<b>CIRCLING MINIMA</b>	A,B: 2340-2.4			C: 2500-4.0			D: 2570-5.0													
NM FM VOR	6	5	4	3	2	1.2	1	0.5												
ALT (3° APCH PATH)	4100	3770	3450	3140	2820	2570	2500	2340												

**SECTOR C**

PBO VOR or NDB  
106°  
066°

VOR or NDB  
4100  
3000  
2700  
3540  
2910  
MDA  
MAPt  
5200  
056°

**MISSED APPROACH:**

TURN LEFT.  
TRACK 056°. CLIMB TO 5200FT.

NM FM VOR	25	15				7	6	5	3	0										
<b>CIRCLING MINIMA</b>	A,B: 2430-2.4			C: 2500-4.0			D: 2570-5.0													
NM FM VOR	6.7	6	5	4	3	1.9	1.7	1.5												
ALT (3° APCH PATH)	4100	3860	3540	3230	2910	2570	2500	2430												

Changes: UNICOM REMOVED.

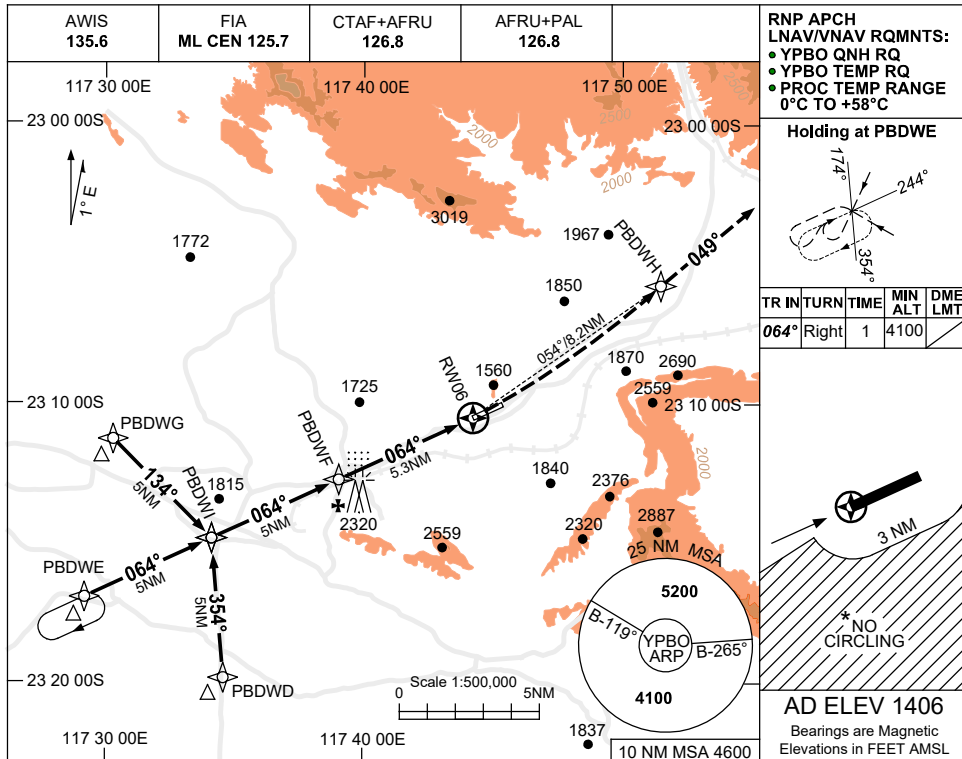
PBODG02-174

USE QNH

RNP RWY 06

PARABURDOO, WA (YPBO)

30 NOV 2023

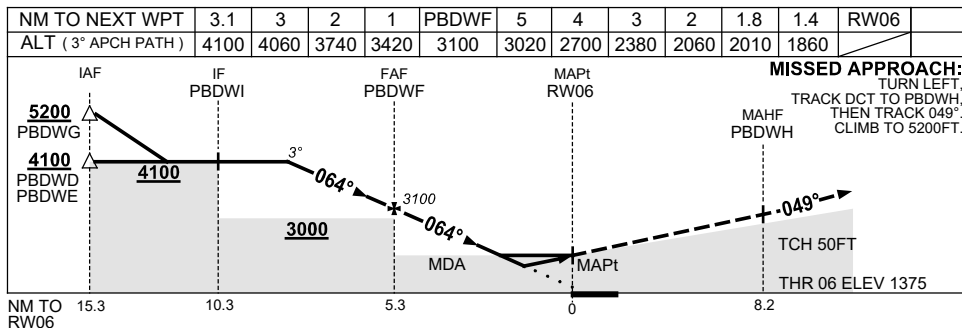


**RNP APCH LNAV/VNAV RQMTS:**  
 ● YPBO QNH RQ  
 ● YPBO TEMP RQ  
 ● PROC TEMP RANGE 0°C TO +58°C

**Holding at PBDWE**

TR IN	TURN	TIME	MIN ALT	DME LMT
064°	Right	1	4100	

**AD ELEV 1406**  
 Bearings are Magnetic  
 Elevations in FEET AMSL



**NOTES**

CATEGORY	A	B	C	D
LNAV/VNAV		1860 (485-2.7)		
LNAV		2010 (635-3.6)		
CIRCLING *	2340 (934-2.4)		2500 (1094-4.0)	2570 (1164-5.0)
ALTERNATE	(1434-4.4)		(1594-6.0)	(1664-7.0)

- MAX IAS:  
INITIAL : 210KT,  
MAP TURN: 240KT.
- NO CIRCLING S OF RWY 06/24 BEYOND 3NM.
- COLOUR: SEE SPEC NOTICES.

Changes: CHART TITLE, PBN SPECIFICATION BOX, Editorial.

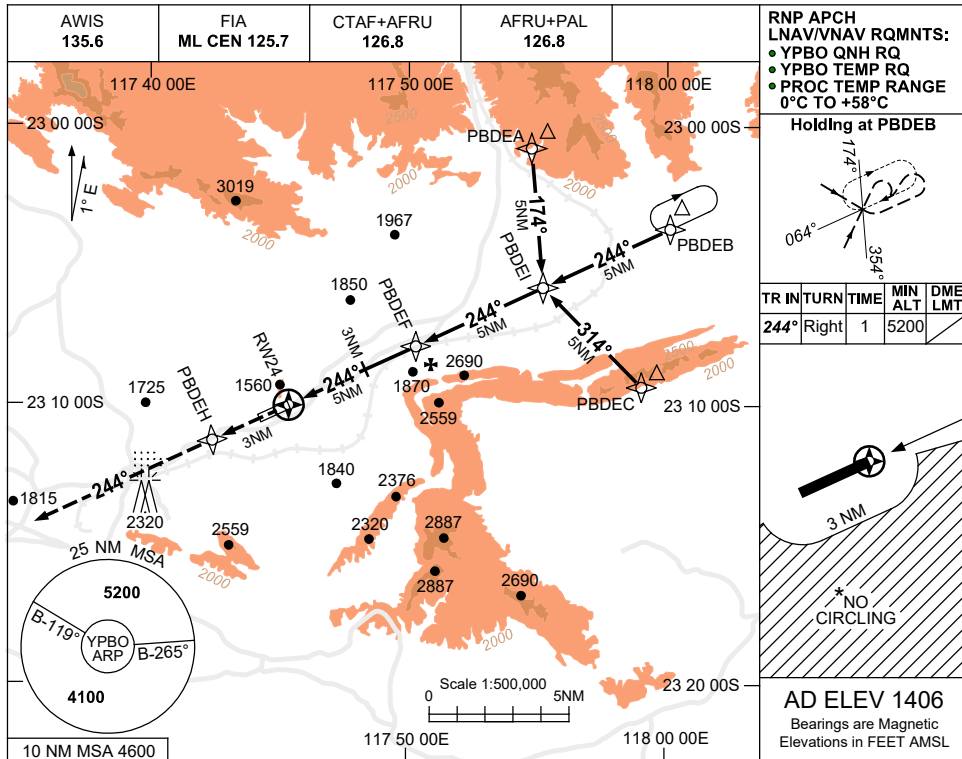
PBOGN01-177

USE QNH

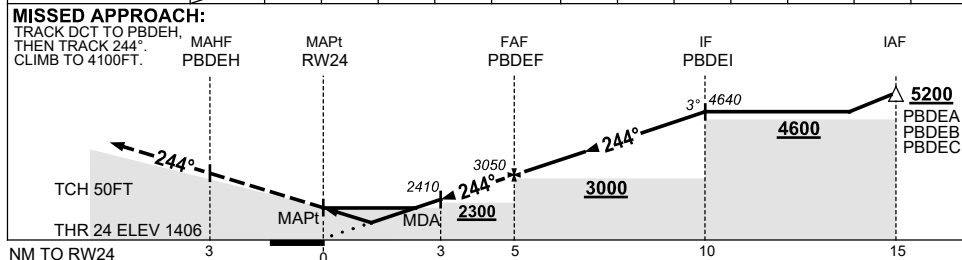
RNP RWY 24

30 NOV 2023

PARABURDOO, WA (YPBO)



NM TO NEXT WPT	RW24	1.4	2	3	4	PBDEF	1	2	3	4	PBDEI		
ALT (3° APCH PATH)		1910	2090	2410	2730	3050	3370	3690	4000	4320	4640		



**NOTES**

CATEGORY	A	B	C	D
LNAV/VNAV		<b>1910</b> (504-2.9)		
LNAV		<b>2090</b> (684-3.9)		
CIRCLING *	<b>2340</b> (934-2.4)		<b>2500</b> (1094-4.0)	<b>2570</b> (1164-5.0)
ALTERNATE	(1434-4.4)		(1594-6.0)	(1664-7.0)

- 1. MAX IAS: INITIAL : 210KT.
- \* 2. NO CIRCLING S OF RWY 06/24 BEYOND 3NM.
- 3. COLOUR: SEE SPEC NOTICES.

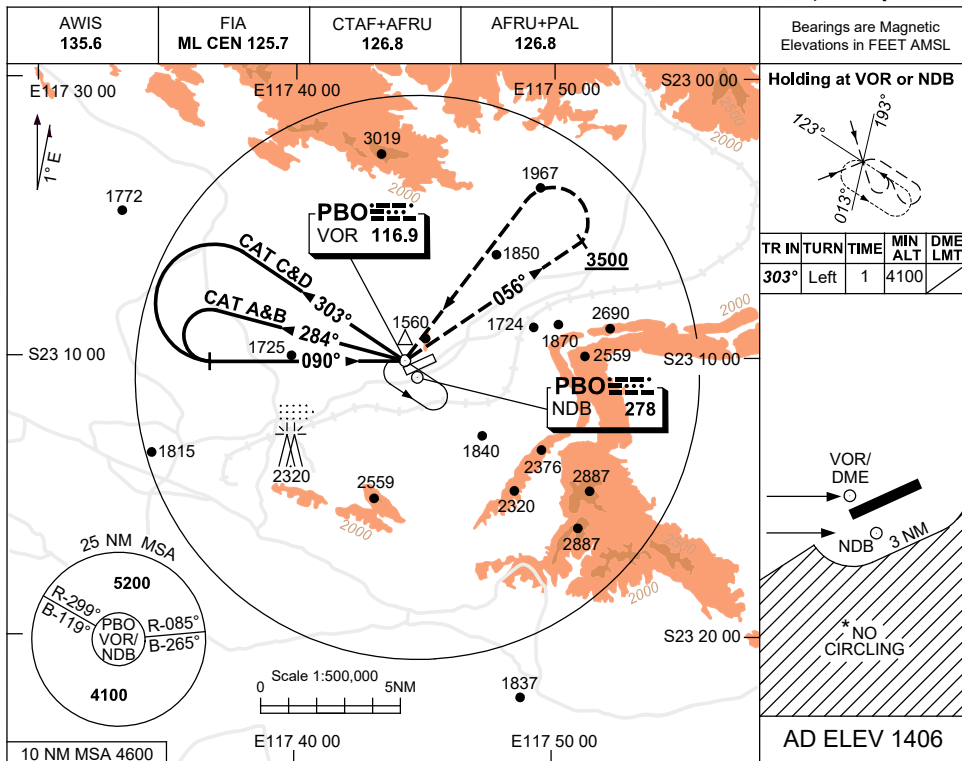
Changes: CHART TITLE, PBN SPECIFICATION BOX, Editorial.

PBOGN02-177

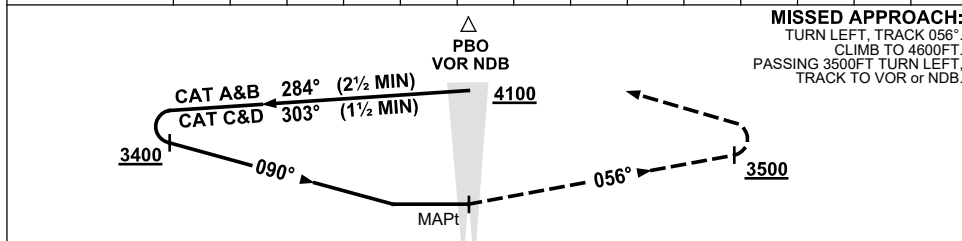
USE QNH

NDB-A or VOR-A  
**PARABURDOO, WA (YPBO)**

23 MAR 2023



DME DIST	NOT APPLICABLE				
ALT					



**NOTES**

CATEGORY	A	B	C	D
CIRCLING *	<b>2340</b> (934-2.4)	<b>2500</b> (1094-4.0)	<b>2570</b> (1164-5.0)	
ALTERNATE	(1434-4.4)	(1594-6.0)	(1664-7.0)	

1. MAX IAS:  
 INITIAL : 210KT.  
 MAP TURN: 210KT.  
 HOLDING : 210KT.
2. NO CIRCLING S OF  
 RWY 06/24 BEYOND  
 3NM.
3. COLOUR: SEE  
 SPEC NOTICES.

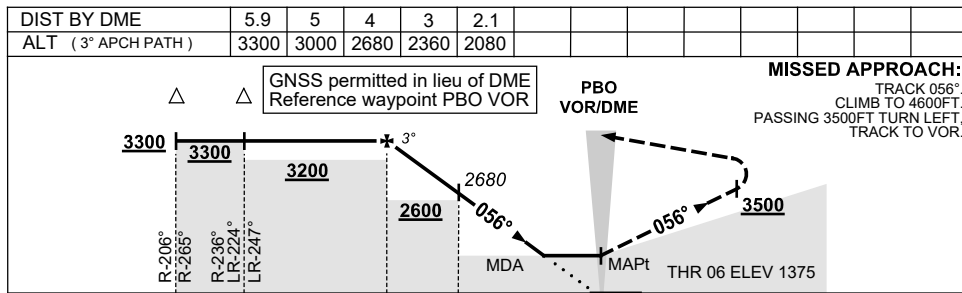
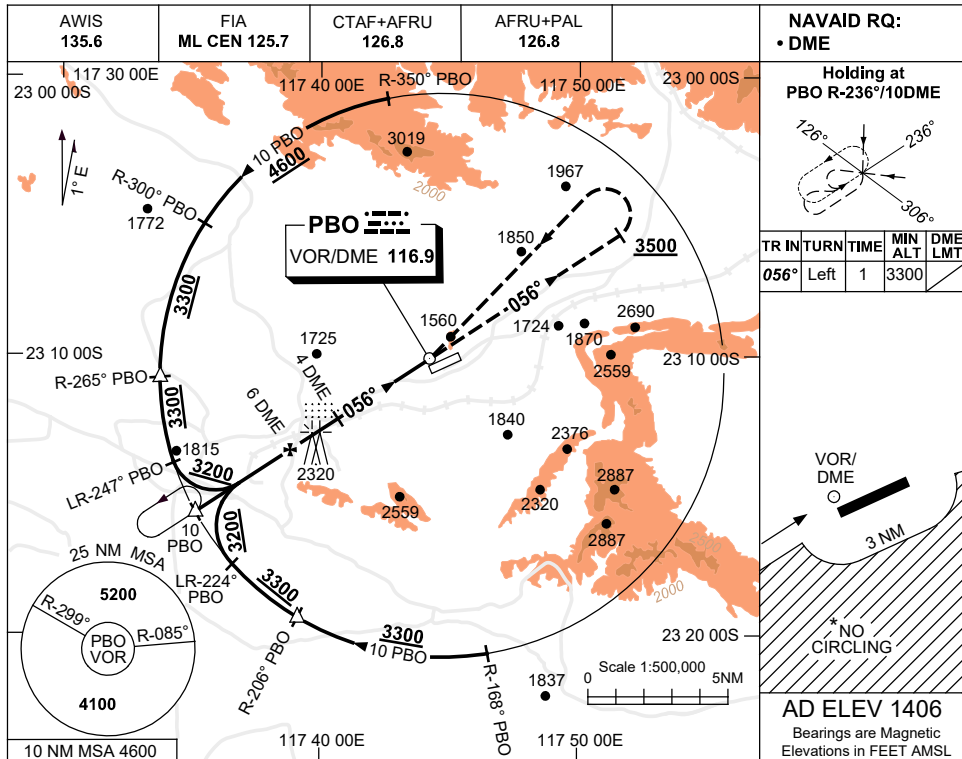
Changes: UNICOM REMOVED.

PBONB01-174

USE QNH

VOR RWY 06  
**PARABURDOO, WA (YPBO)**

23 MAR 2023



**NOTES**

CATEGORY	A	B	C	D
S-I VOR/DME	<b>2080 (705-4.0)</b>			
CIRCLING*	<b>2340</b> (934-2.4)	<b>2500</b> (1094-4.0)	<b>2570</b> (1164-5.0)	
ALTERNATE	(1434-4.4)	(1594-6.0)	(1664-7.0)	

1. MAX IAS:  
 HOLDING: 210KT.  
 INITIAL : 210KT.
- \*2. NO CIRCLING S OF RWY 06/24 BEYOND 3NM.
3. COLOUR: SEE SPEC NOTICES.

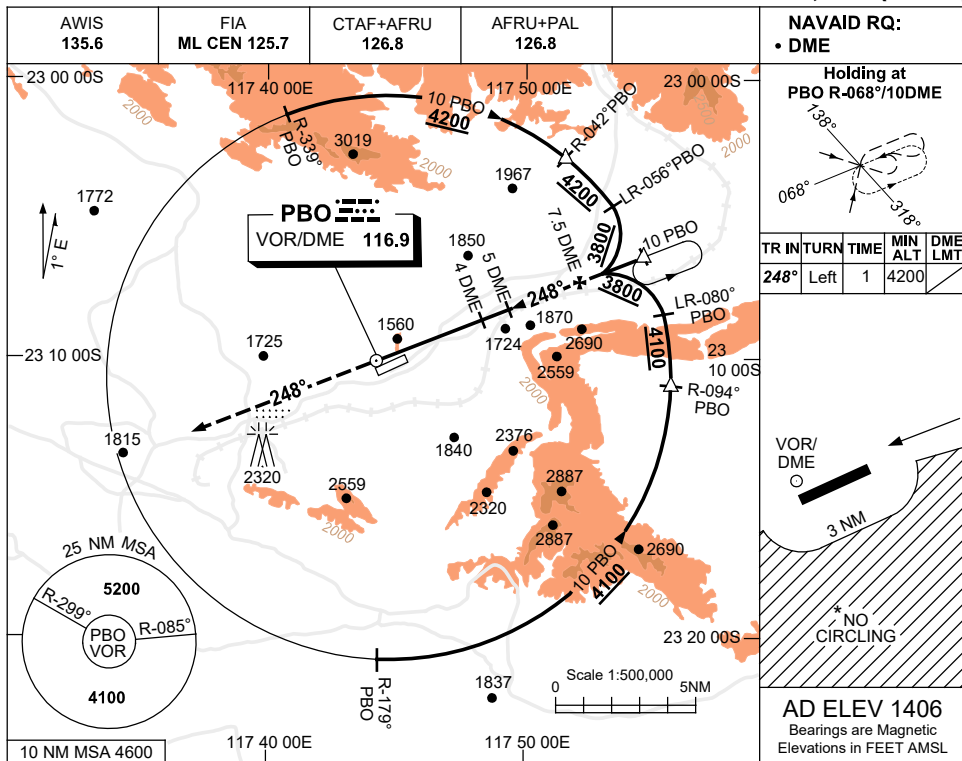
Changes: UNICOM REMOVED.

PBOV001-174

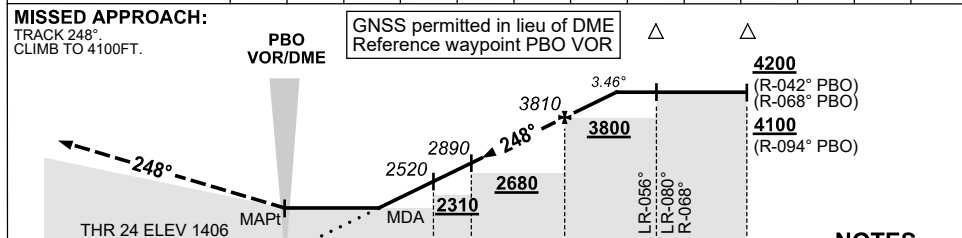
USE QNH

VOR RWY 24  
**PARABURDOO, WA (YPBO)**

23 MAR 2023



DIST BY DME	2.9	3	4	5	6	7	7.5	8	8.6				
ALT (3.46° APCH PATH)	2100	2150	2520	2890	3260	3620	3810	3990	4200				



**NOTES**

- MAX IAS:  
 HOLDING: 210KT.  
 INITIAL : 210KT.
- NO CIRCLING S OF RWY 06/24 BEYOND 3NM.
- APCH PATH ANGLE DOES NOT COINCIDE WITH PAPI ON GLIDE SLOPE INDICATION.
- COLOUR: SEE SPEC NOTICES.

CATEGORY	A	B	C	D
S-I VOR/DME	2100 (694-3.5)			
CIRCLING*	2340 (934-2.4)	2500 (1094-4.0)	2570 (1164-5.0)	
ALTERNATE	(1434-4.4)	(1594-6.0)	(1664-7.0)	

Changes: UNICOM REMOVED.

PBOV002-174