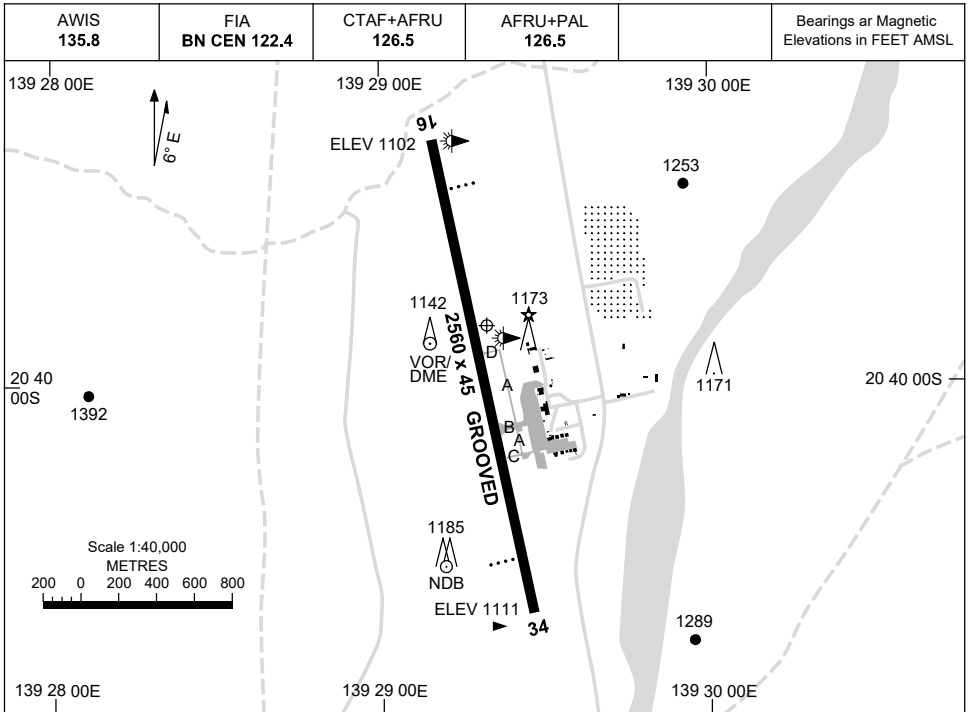


AD ELEV 1121  
20 39 50S 139 29 19E

**AERODROME CHART**  
**MOUNT ISA, QLD (YBMA)**

**1 DEC 2022**

Bearings ar Magnetic  
Elevations in FEET AMSL



**AERODROME LIGHTING**

**RWY**

ABN : FLG W/G 8 SEC  
TAXIWAY : BLUE EDGE TWY B  
RL : AFRU+PAL 126.5 , SDBY (15 SEC) , PTBL (60 MIN PN ARO 0428 030 409)

**16** <sup>162</sup>  
<sup>342</sup> **34**

PAPI 3.0° 53.3FT MIRL PTBL  
PAPI 3.0° 53.3FT MIRL PTBL

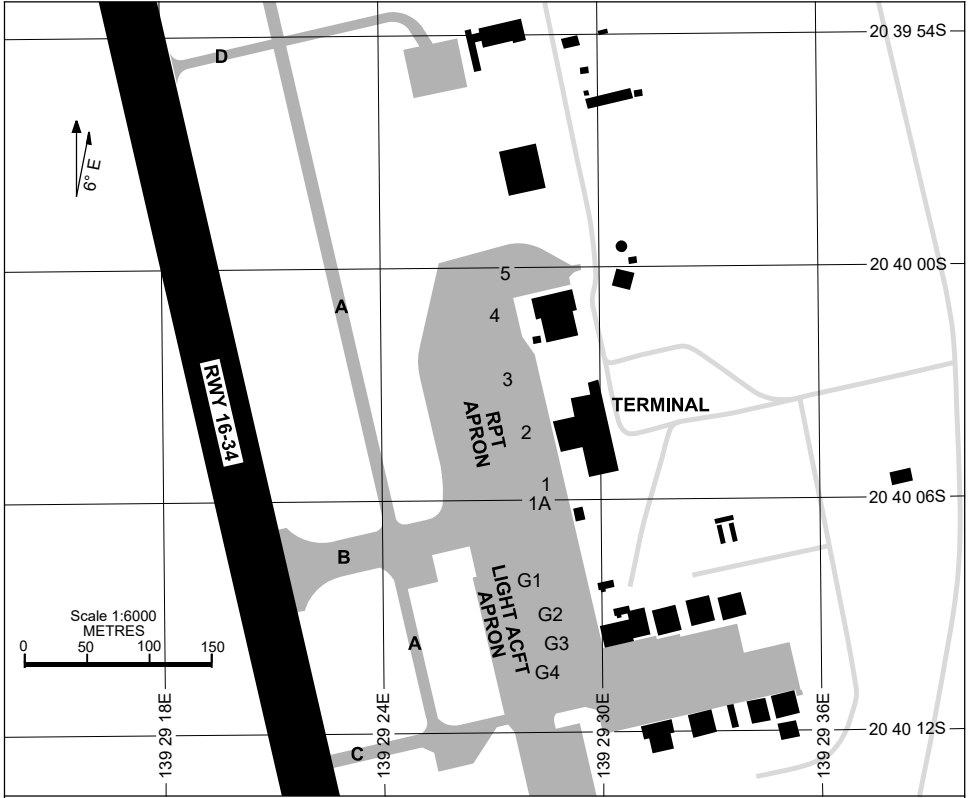
**NOTES**

Changes: NOTES.

BMAAD01-173

17 JUN 2021

APRON CHART  
MOUNT ISA, QLD (YBMA)



**PARKING POSITION INFORMATION**

STAND	CO-ORDINATES	ELEV (ft)	CAPACITY	HYDRANT FUEL	DOCKING SYSTEM
1	20 40 05.68S 139 29 28.52E	1106	A321	TANKER	NIL
1A	20 40 06.15S 139 29 28.35E	1106	DH8D	TANKER	NIL
2	20 40 04.29S 139 29 27.99E	1104	B738	TANKER	NIL
3	20 40 02.86S 139 29 27.49E	1104	F100	TANKER	NIL
4	20 40 01.18S 139 29 27.14E	1104	DH8C	TANKER	NIL
5	20 40 00.11S 139 29 27.43E	1103	SW4	TANKER	NIL
G1	20 40 08.07S 139 29 28.04E	1105	SW4	TANKER	NIL
G2	20 40 08.96S 139 29 28.63E	1106	BE35	TANKER	NIL
G3	20 40 09.71S 139 29 28.82E	1105	BE35	TANKER	NIL
G4	20 40 10.36S 139 29 28.25E	1106	BE35	TANKER	NIL

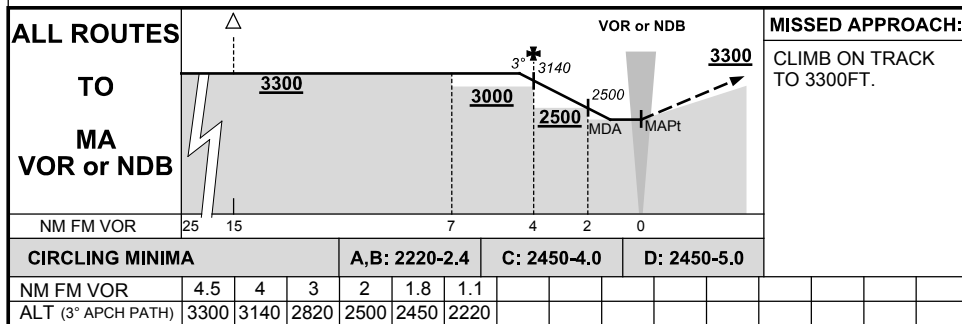
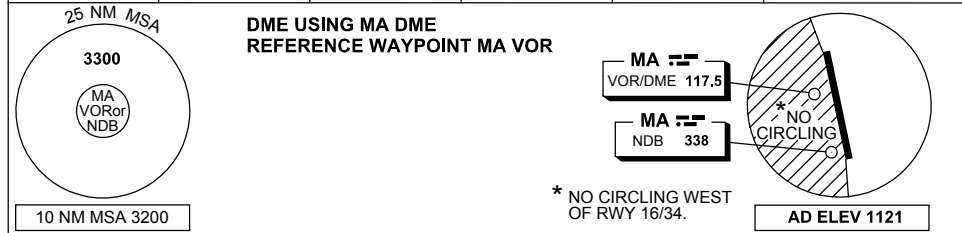
Changes: ACFT STANDS COORDS, ELEV, CAPACITY & DOCKING SYSTEM UPDATE.

BMAAP01-167

## DME or GNSS ARRIVAL PROCEDURES MOUNT ISA, QLD (YBMA)

2 MAR 2017

AWIS 135.8	FIA BN CEN 122.4	CTAF+AFRU 126.5	AFRU+PAL 126.5		Bearings are Magnetic Elevations in FEET AMSL
---------------	---------------------	--------------------	-------------------	--	--

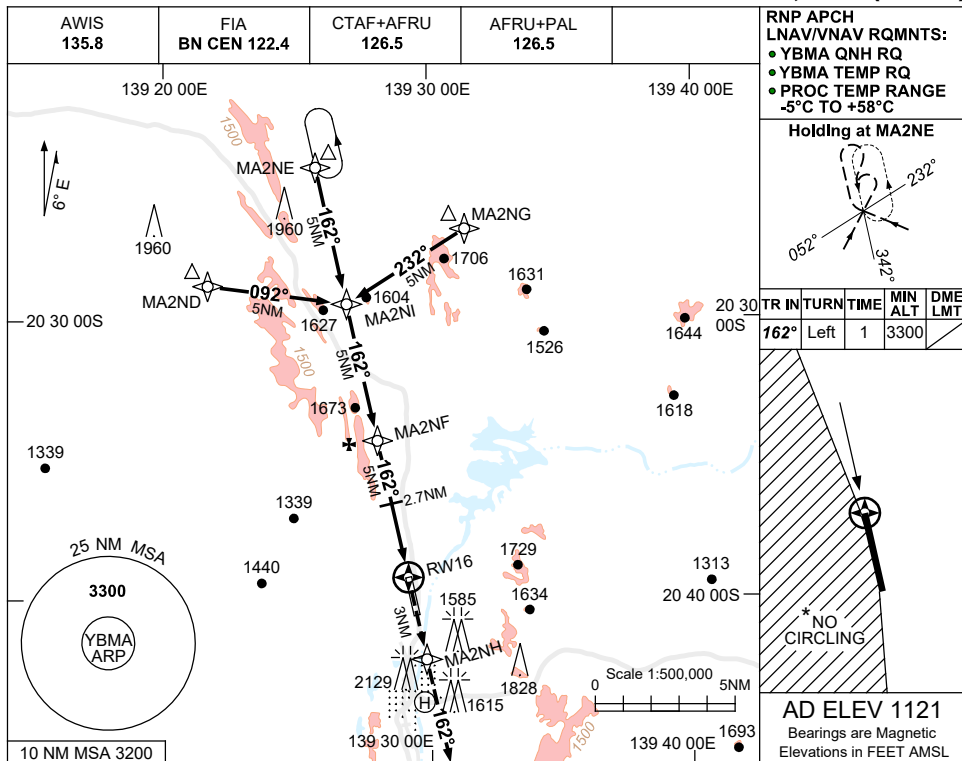


USE QNH

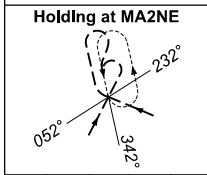
RNP Z RWY 16

15 JUN 2023

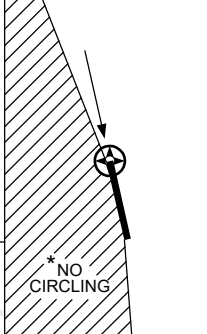
MOUNT ISA, QLD (YBMA)



RNP APCH  
LNAV/VNAV RQMNTS:  
• YBMA QNH RQ  
• YBMA TEMP RQ  
• PROC TEMP RANGE  
-5°C TO +58°C

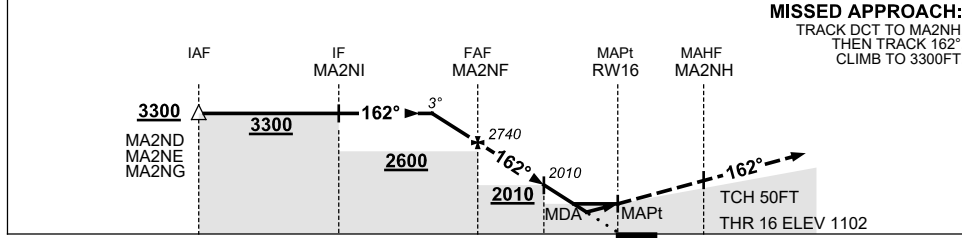


TR	IN	TURN	TIME	MIN ALT	DME LMT
162°	Left	1	3300		



**AD ELEV 1121**  
Bearings are Magnetic  
Elevations in FEET AMSL

NM TO NEXT WPT	1.7	1	MA2NF	4	3	2.7	2.5	2	1.8	RW16
ALT (3° APCH PATH)	3300	3060	2740	2430	2110	2010	1940	1790	1740	



**MISSED APPROACH:**  
TRACK DCT TO MA2NH,  
THEN TRACK 162°.  
CLIMB TO 3300FT.

NM TO RW16	15	10	5	2.7	0	3
Altitude	3300	2600	2010	1740	1102	1740

**NOTES**

CATEGORY	A	B	C	D
LNAV/VNAV		1740 (638-3.6)		
LNAV		1940 (838-4.8)		
CIRCLING *	2090 (969-2.4)		2450 (1329-4.0)	2450 (1329-5.0)
ALTERNATE	(1469-4.4)		(1829-6.0)	(1829-7.0)

- MAX IAS:  
INITIAL : 210KT.
- NO CIRCLING WEST OF RWY 16/34.
- COLOUR: SEE SPEC NOTICES.

Changes: Editorial.

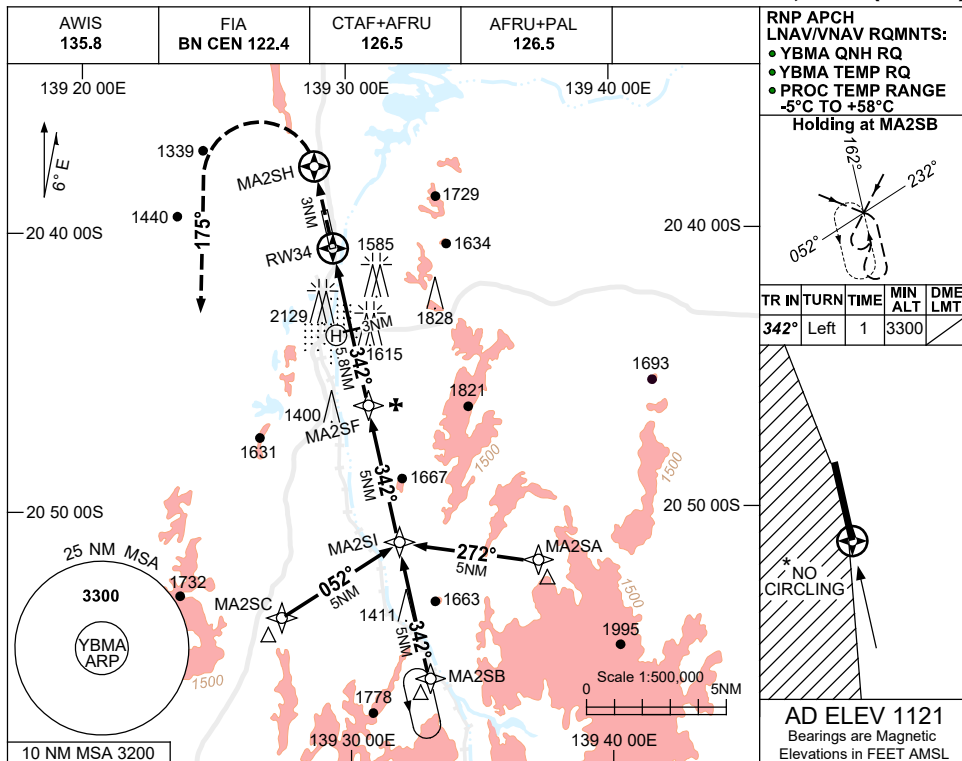
BMAGN01-175

USE QNH

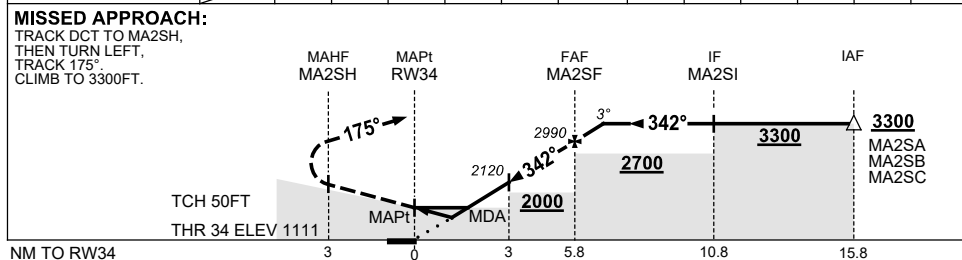
RNP Z RWY 34

15 JUN 2023

MOUNT ISA, QLD (YBMA)



NM TO NEXT WPT	RW34	1.3	1.8	3	4	5	MA2SF	1				
ALT (3° APCH PATH)		1590	1740	2120	2430	2750	2990	3300				



CATEGORY	A	B	C	D
LNAV/VNAV		1590 (479-2.7)		
LNAV		1740 (629-3.6)		
CIRCLING *	2090 (969-2.4)		2450 (1329-4.0)	2450 (1329-5.0)
ALTERNATE	(1469-4.4)		(1829-6.0)	(1829-7.0)

- NOTES**
- MAX IAS: INITIAL : 210KT.
  - NO CIRCLING WEST OF RWY 16/34.
  - COLOUR: SEE SPEC NOTICES.

Changes: 5.8NM-3NM MIN ALT.

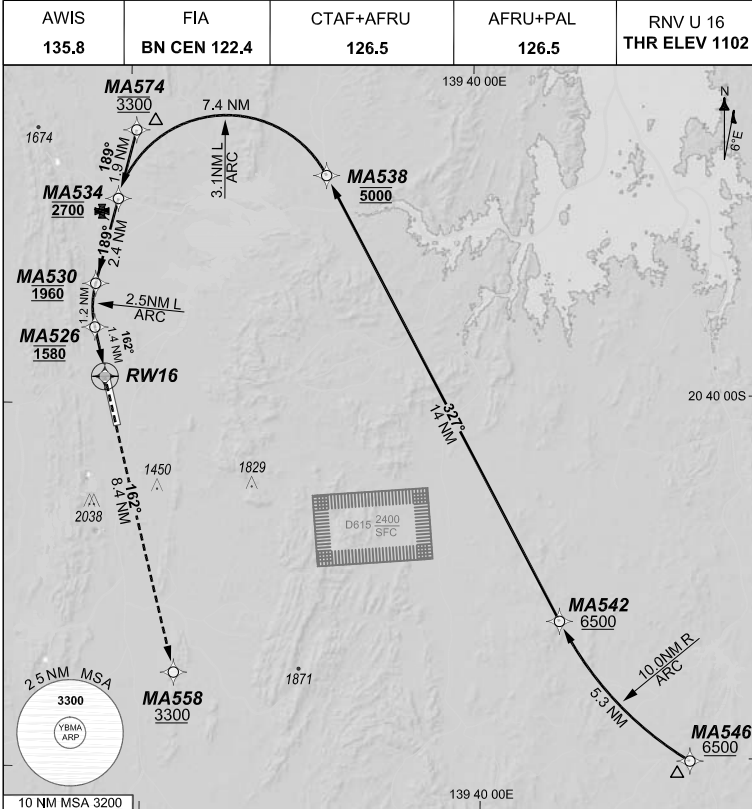
BMAGN02-175

**FOR CASA APPROVED  
OPERATORS ONLY  
USE QNH**

**1 DEC 2022**

GE PROPRIETARY INFORMATION

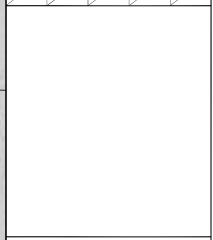
202208051420 COPYRIGHT 2022 NAVERUS, INC. USA



RNP AR APCH  
- RF RQ  
- YBMA ACT QNH RQ  
- YBMA ACT TEMP RQ  
- PROC TEMP RANGE  
-2°C TO +45°C

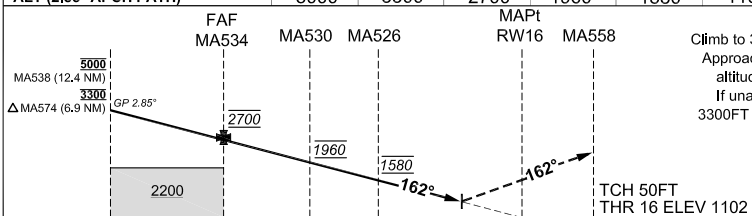
**Holding as directed  
by ATC**

TR	INTURN TIME	MIN ALT	DME	LMT



**AD ELEV 1121**  
Bearings are Magnetic  
Elevations in FEET AMSL

ALT (2.85° APCH PATH)	MA538	MA574	MA534	MA530	MA526	RW16
	5000	3300	2700	1960	1580	1102



**MISSED APPROACH:**  
Climb to 3300FT via the RNP AR Missed Approach track to MA558. Acceleration altitude 2200FT QNH (1000FT AGL). If unable to cross MA558 at or above 3300FT continue on Engine Out Missed Approach track.

**ENGINE OUT MISSED APPROACH:**  
SEE PAGE 2

NM FM THR

**NOTES**

1. Lateral transition to MAP must not be initiated prior to DA/H PSN.
2. APCH Path does not coincide with PAPI glide path 3°.
3. MIN MAP GRAD (AE) for RNP 0.20 3.2% and RNP 0.30 3.0% to 3300 FT.

CATEGORY	A	B	C	D
RNP (0.30)	N/A		DA(H) <b>1675</b> (573 - 3.3)	DA(H) <b>1675</b> (573 - 3.3)
RNP (0.20)			DA(H) <b>1621</b> (519 - 2.9)	DA(H) <b>1621</b> (519 - 2.9)
CIRCLING			NOT AUTHORISED	NOT AUTHORISED
ALTERNATE				

Changes: Chart reformatting, Glide path note, Added D615 danger area.

BMAGN03-173

**DO NOT USE FOR NAVIGATION**

Prepared by GE Aviation



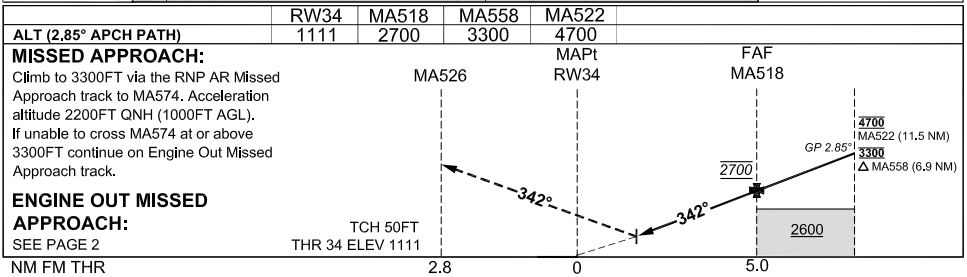
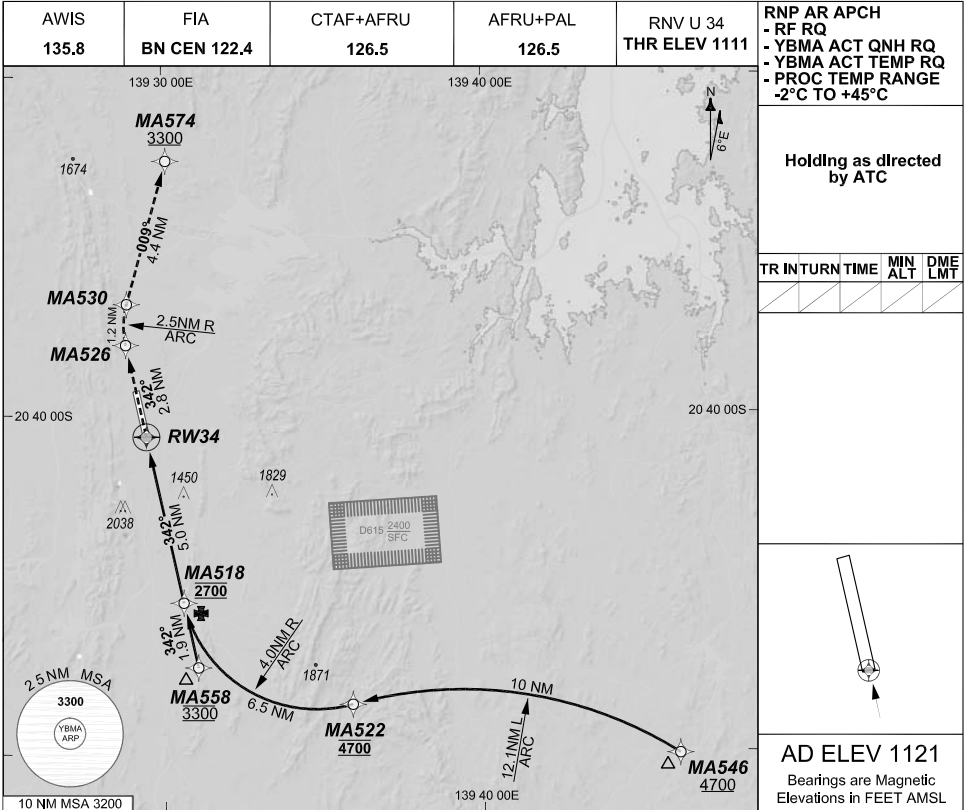
**FOR CASA APPROVED  
OPERATORS ONLY  
USE QNH**

RNP U RWY 34 (AR) - Page 1  
**MOUNT ISA, QLD (YBMA)**

**1 DEC 2022**

GE PROPRIETARY INFORMATION

202208051421 COPYRIGHT 2022 NAVERUS, INC. USA



**NOTES**

1. Lateral transition to MAP must not be initiated prior to DAVH PSN.
2. APCH Path does not coincide with PAPI glide path 3°.
3. MIN MAP GRAD (AE) for RNP 0.15 and RNP 0.20 3.6% to 3000FT. RNP 0.30 3.5% to 3300 FT.

Changes: Chart reformatting, RNP 0.30 DA/VIS change, Glide path note, Added D615 danger area.

BMAGN04-173

**DO NOT USE FOR NAVIGATION**

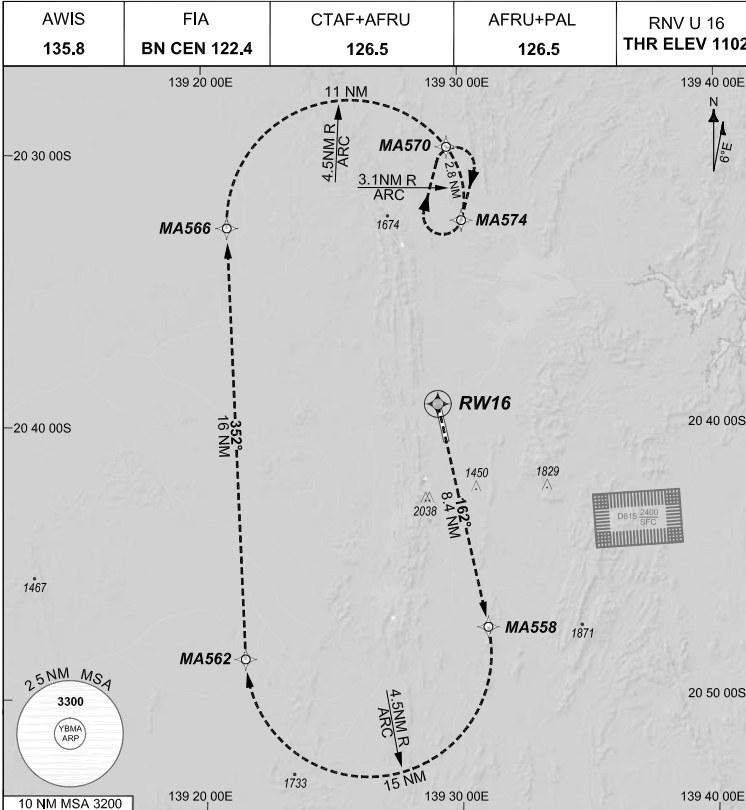
Prepared by GE Aviation



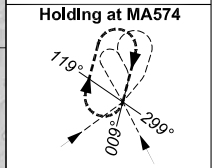
**FOR CASA APPROVED  
OPERATORS ONLY  
USE QNH**

**1 DEC 2022**

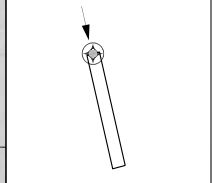
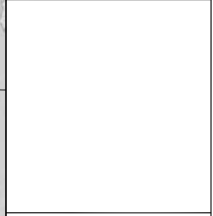
GE PROPRIETARY INFORMATION



**RNP AR APCH**  
- RF RQ  
- YBMA ACT QNH RQ  
- YBMA ACT TEMP RQ  
- PROC TEMP RANGE  
-2°C TO +45°C



TR INTRN TIME	MIN ALT	DME LMT
189° Right	1'	3300



**AD ELEV 1121**  
Bearings are Magnetic  
Elevations in FEET AMSL

**ENGINE OUT MISSED APPROACH:**

Track via the RNP AR Engine Out Missed Approach track to MA574 and hold as published. Acceleration altitude 2200FT QNH (1000FT AGL). Maximum holding speed 230 KIAS. EO hold only.

202208041711 COPYRIGHT © 2022 NAVERUS, INC. USA

Changes: NEW

BMAGN05-173

**DO NOT USE FOR NAVIGATION**

Prepared by GE Aviation







---

# NOISE ABATEMENT PROCEDURES

## MOUNT ISA

### 1 - PREFERRED RUNWAYS

- |     |          |           |
|-----|----------|-----------|
| 1.1 | Landing  | Runway 16 |
| 1.2 | Take-off | Runway 34 |

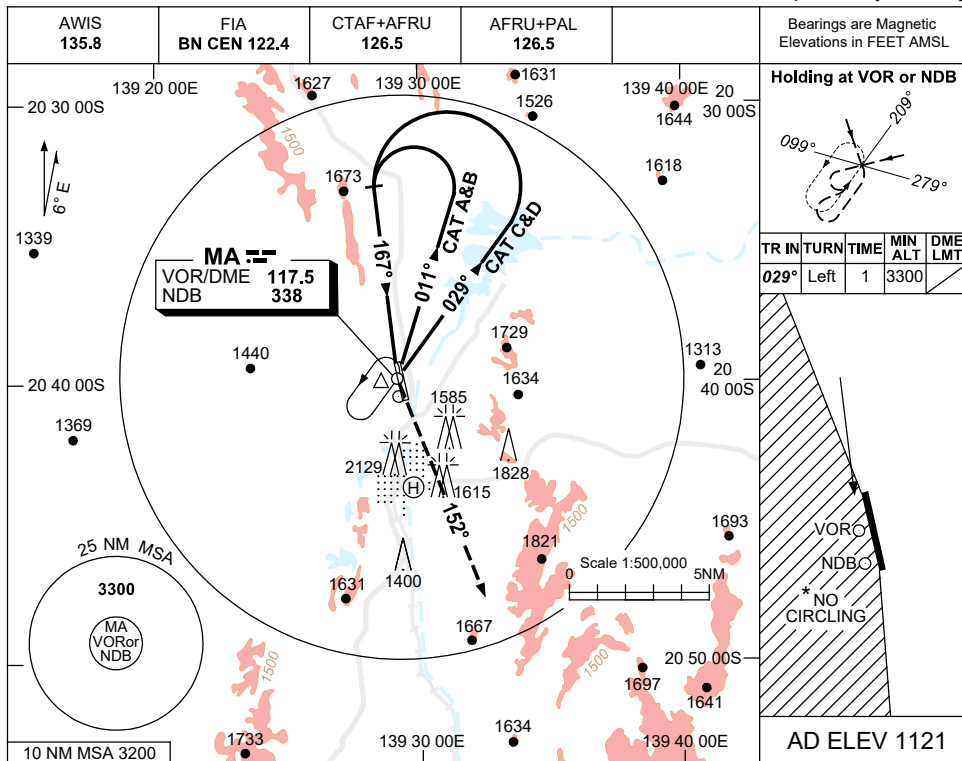
### 2 - PREFERRED FLIGHT PATHS

- 2.1 Whenever possible, JET aircraft are to avoid overflying the residential areas of the city.

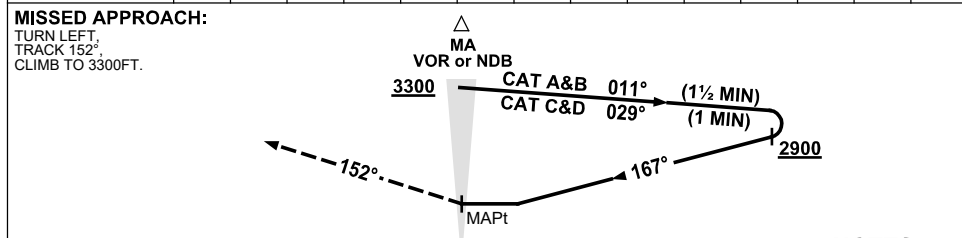
USE QNH

NDB-A or VOR-A  
**MOUNT ISA, QLD (YBMA)**

15 JUN 2023



DME DIST	NOT APPLICABLE			
ALT				



- NOTES**
- MAX IAS:  
INITIAL :  
CAT C&D 190KT.
  - NO CIRCLING WEST OF RWY 16/34.
  - NDB HLDG PTN INBOUND LEG MAY BE SUBJECT TO EXCESSIVE NEEDLE SWINGS.
  - COLOUR: SEE SPEC NOTICES.

CATEGORY	A	B	C	D
CIRCLING *	2220 (1099-2.4)		2450(1329-4.0)	2450(1329-5.0)
ALTERNATE	(1599-4.4)		(1829-6.0)	(1829-7.0)

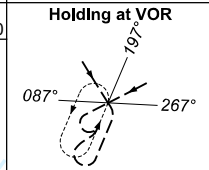
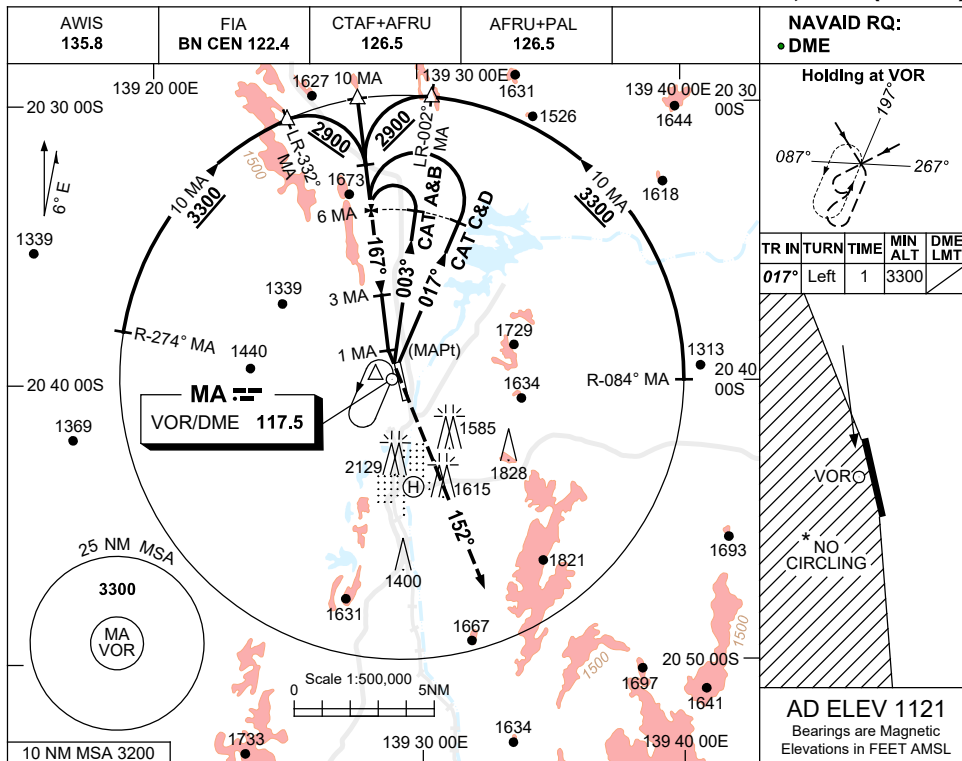
Changes: CAT C&D OUTBOUND TRK.

BMANB01-175

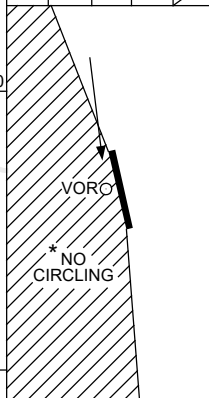
USE QNH

VOR RWY 16  
MOUNT ISA, QLD (YBMA)

15 JUN 2023

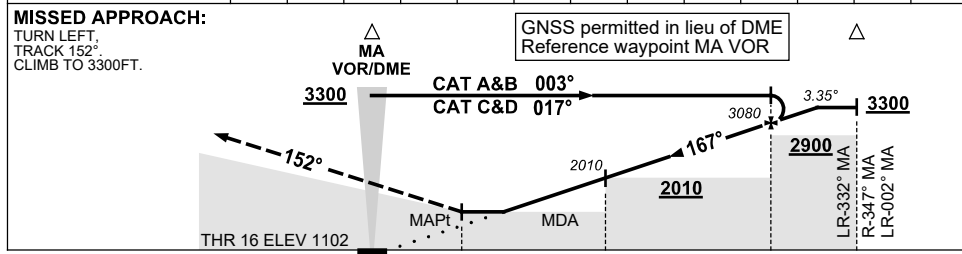


TR	IN	TURN	TIME	MIN ALT	DME LMT
017°	Left	1	3300		



AD ELEV 1121  
Bearings are Magnetic  
Elevations in FEET AMSL

DIST BY DME	2.9	3	4	5	6	6.6				
ALT (3.35° APCH PATH)	1980	2010	2370	2720	3080	3300				



NM TO MA DME

CATEGORY	A	B	C	D
S-I VOR/DME	1980 (878-4.5)			
CIRCLING *	2090 (969-2.4)	2450 (1329-4.0)	2450 (1329-5.0)	
ALTERNATE	(1469-4.4)	(1829-6.0)	(1829-7.0)	

- NOTES**
- MAX IAS: INITIAL : 210KT.
  - NO CIRCLING WEST OF RWY 16/34.
  - COLOUR: SEE SPEC NOTICES.

Changes: CAT A&B OUTBOUND TRK.

BMAV001-175