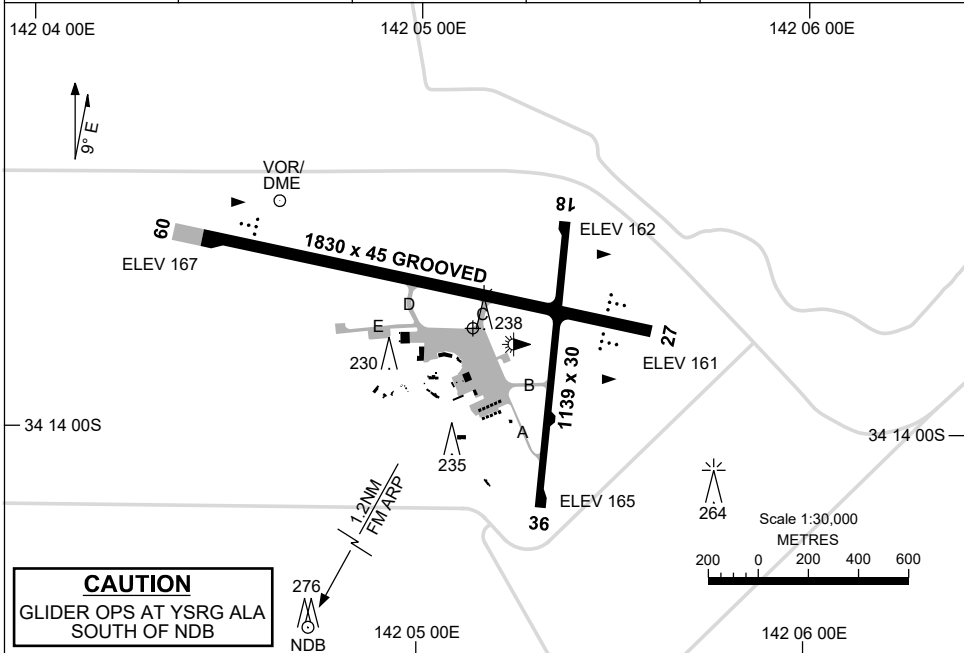


23 MAR 2023

AD ELEV 167
34 13 45S 142 05 08E

AERODROME CHART
MILDURA, VIC (YMIA)

AWIS 128.675	FIA ML CEN 122.1	CTAF+AFRU 118.8	PAL+AA 119.6	Bearings are Magnetic Elevations in FEET AMSL
-----------------	---------------------	--------------------	-----------------	--



RWY		AERODROME LIGHTING
		TAXIWAY : BLUE EDGE ON TWY C AND D RL : PAL+AA 119.6 , SDBY (6 SEC)
09 272	⁰⁹² 27	AT-VASIS LEFT SIDE 3.0° 45FT LIRL T-VASIS 3.0° 41FT LIRL
18 356	¹⁷⁶ 36	LIRL LIRL

NOTES

- AWIS RQ THREE-ONE SECOND TRANSMIT PULSES TO ACTIVATE.
- PAL+AA RQ THREE-THREE SECOND PULSES TO ACTIVATE.
WAIT 5 SEC BEFORE SECOND ATTEMPT. ON SUCCESSFUL ACTIVATION - VOICE ACKNOWLEDGEMENT MILDURA AIRPORT AIRFIELD LIGHTING ON.

CAUTION:
GLIDING OPS AT SUNRAYSIA ALA HJ JF AND NOTAM FROM GRASS AIRSTRIP 2NM SSW OF AD. WIRE LAUNCHING. GLIDERS MONITOR CTAF.

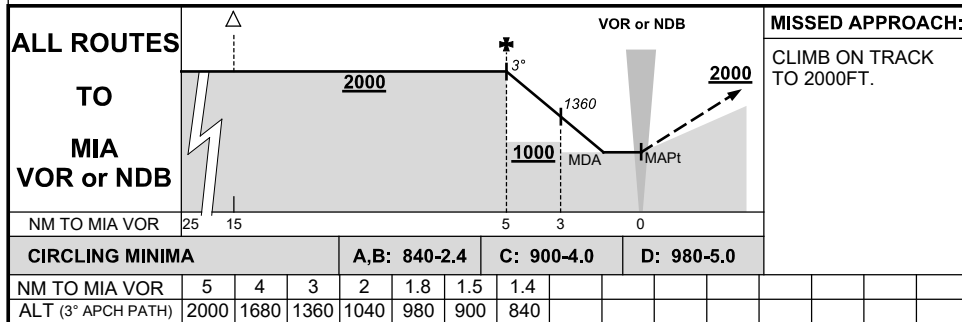
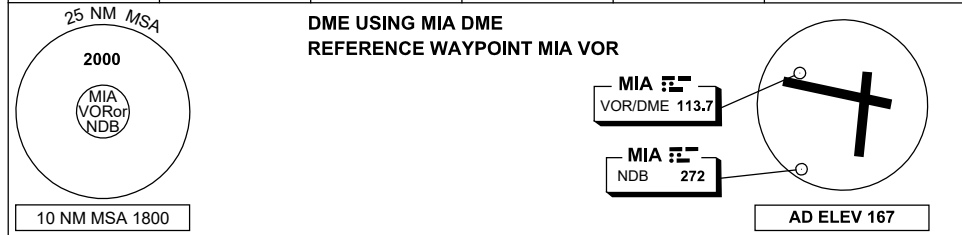
Changes: CAUTION NOTES.

MIAAD01-174

DME or GNSS ARRIVAL PROCEDURES MILDURA, VIC (YMIA)

24 MAR 2022

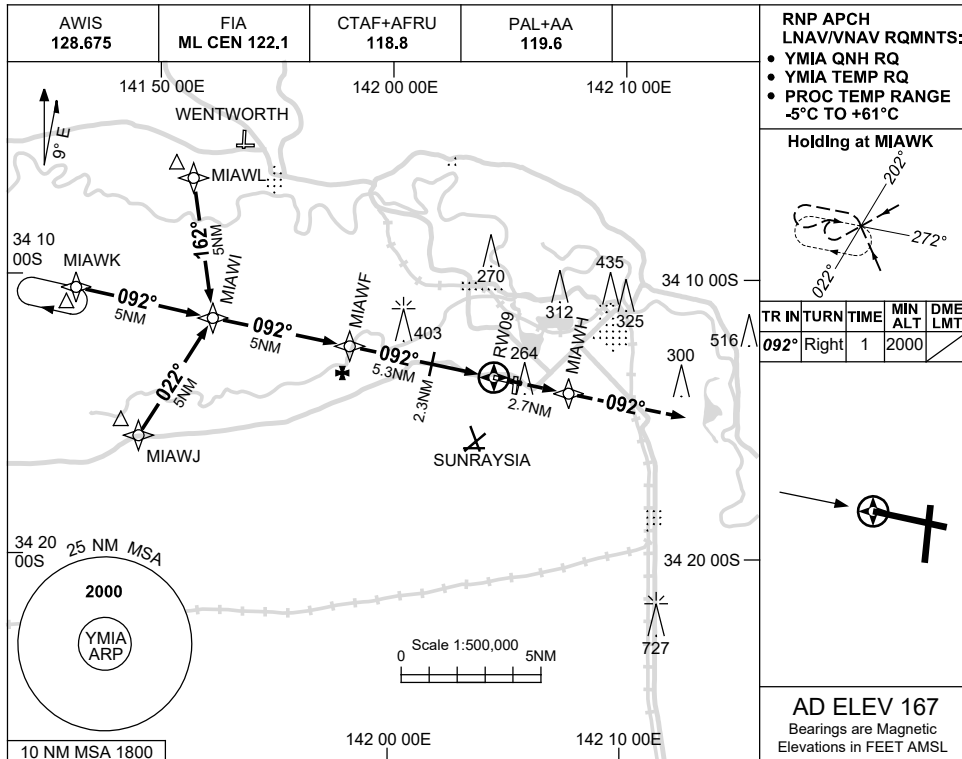
AWIS 128.675	FIA ML CEN 122.1	CTAF+AFRU 118.8	PAL+AA 119.6		Bearings are Magnetic Elevations in FEET AMSL
-----------------	---------------------	--------------------	-----------------	--	--



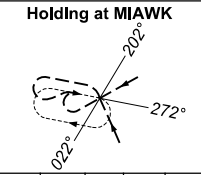
USE QNH

RNP RWY 09
MILDURA, VIC (YMIA)

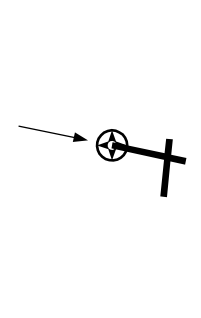
15 JUN 2023



RNP APCH
LNAV/VNAV RQMTS:
• YMIA QNH RQ
• YMIA TEMP RQ
• PROC TEMP RANGE
-5°C TO +61°C

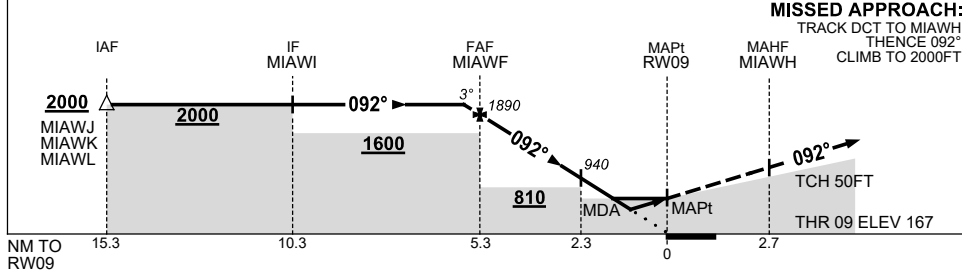


TR	IN	TURN	TIME	MIN ALT	DME LMT
092°	Right		1	2000	



AD ELEV 167
Bearings are Magnetic
Elevations in FEET AMSL

NM TO NEXT WPT	0.3	MIAWF	4	3	2.3	1.4	0.8	RW09
ALT (3° APCH PATH)	2000	1890	1490	1170	940	660	480	



MISSED APPROACH:
TRACK DCT TO MIAWH,
THENCE 092°
CLIMB TO 2000FT.

TCH 50FT
THR 09 ELEV 167

NOTES

1. MAX IAS:
INITIAL : 210KT.
2. CAUTION:
GLIDER OPS 2.3NM
SSW OF YMIA AD.

CATEGORY	A	B	C	D
LNAV/VNAV		480 (313-1.7)		
LNAV		660 (493-2.8)		
CIRCLING	840 (673-2.4)		900 (733-4.0)	980 (813-5.0)
ALTERNATE	(1173-4.4)		(1233-6.0)	(1313-7.0)

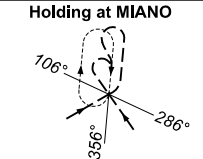
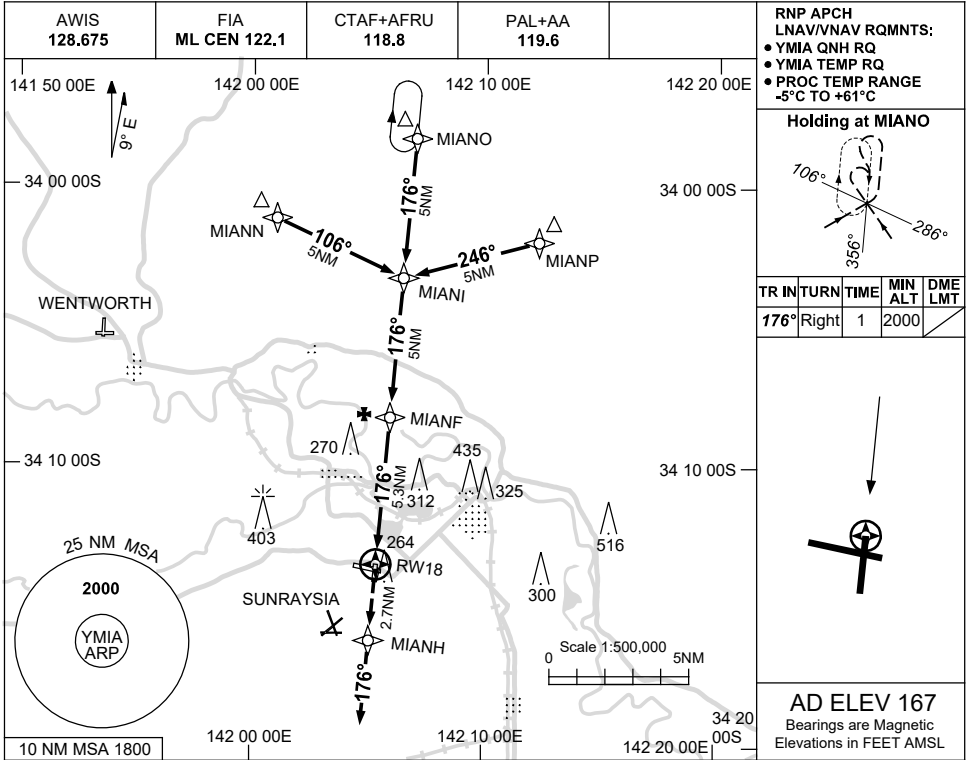
Changes: CHART TITLE, PBN SPECIFICATION BOX, Editorial.

MIAGN01-175

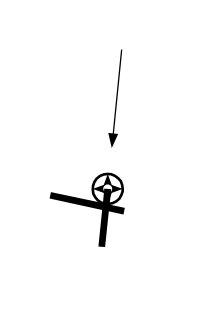
USE QNH

RNP RWY 18
MILDURA, VIC (YMIA)

15 JUN 2023

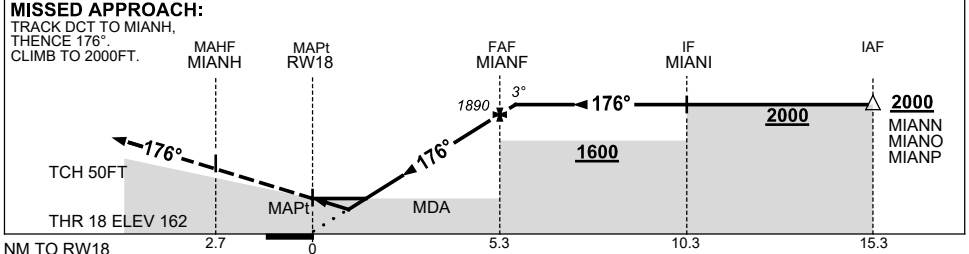


TR IN	TURN	TIME	MIN ALT	DME LMT
176°	Right	1	2000	



AD ELEV 167
Bearings are Magnetic
Elevations in FEET AMSL

NM TO NEXT WPT	RWY18	0.8	1.4	2	3	4	MIANF	0.3				
ALT (3° APCH PATH)		470	660	850	1170	1490	1890	2000				



NOTES

CATEGORY	A	B	C	D
LNAV/VNAV	470 (308-1.7)			NOT APPLICABLE
LNAV	660 (493-2.8)			
CIRCLING	840 (673-2.4)		900 (733-4.0)	980 (813-5.0)
ALTERNATE	(1173-4.4)		(1233-6.0)	(1313-7.0)

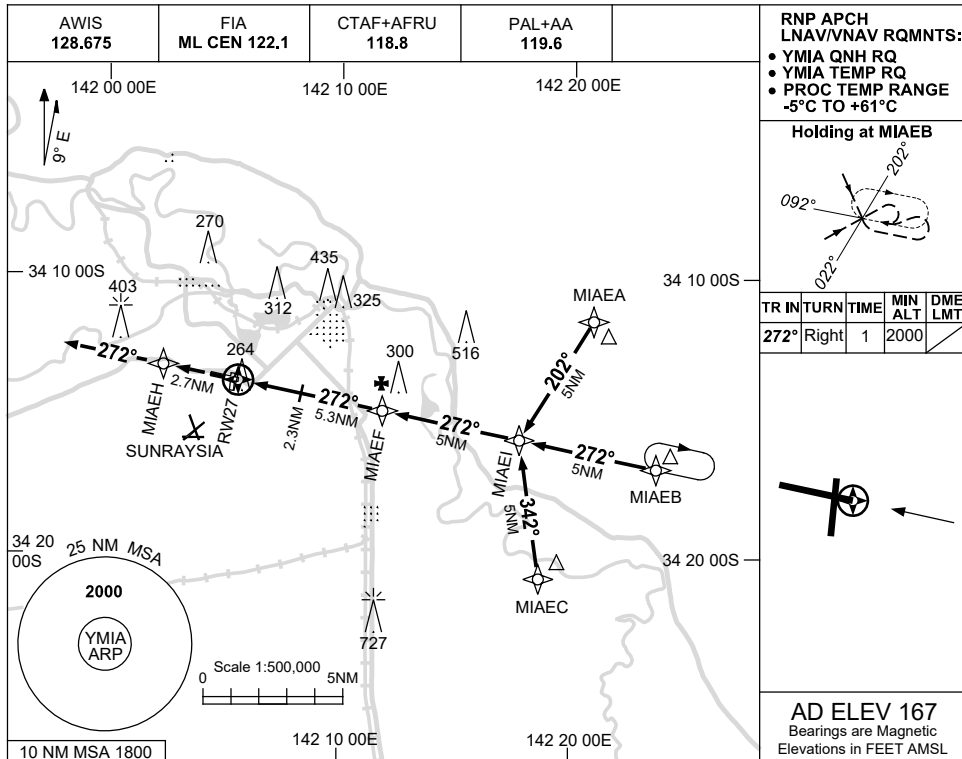
- MAX IAS:
INITIAL : 210KT.
- CAUTION:**
GLIDER OPS 2.3NM
SSW OF YMIA AD
CONFLICTS WITH
MISSED APCH AREA.

Changes: CHART TITLE, PBN SPECIFICATION BOX, Editorial. MIAGN02-175

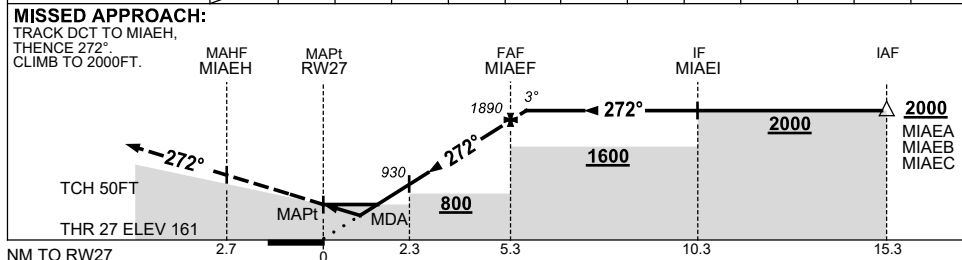
USE QNH

RNP RWY 27
MILDURA, VIC (YMIA)

15 JUN 2023



NM TO NEXT WPT	RW27	0.8	1.4	2.3	3	4	MIAEF	0.4					
ALT (3° APCH PATH)		480	660	930	1170	1480	1890	2000					



NOTES

CATEGORY	A	B	C	D
LNAV/VNAV		480 (319-1.8)		
LNAV		660 (493-2.8)		
CIRCLING	840 (673-2.4)		900 (733-4.0)	980 (813-5.0)
ALTERNATE	(1173-4.4)		(1233-6.0)	(1313-7.0)

1. MAX IAS:
INITIAL : 210KT.
2. **CAUTION:**
GLIDER OPS 2.3NM
SSW OF YMIA AD.

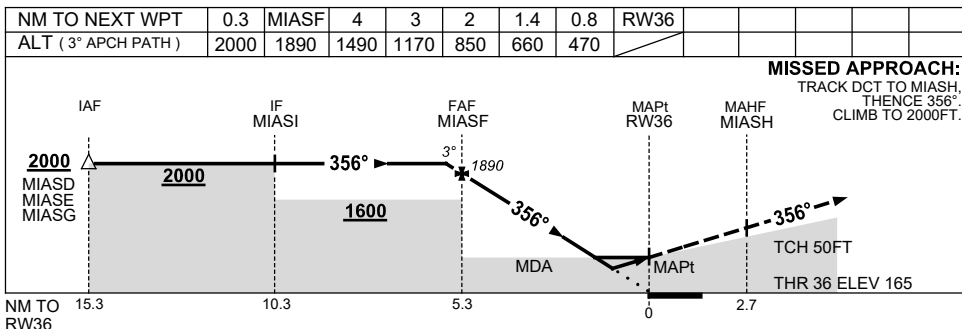
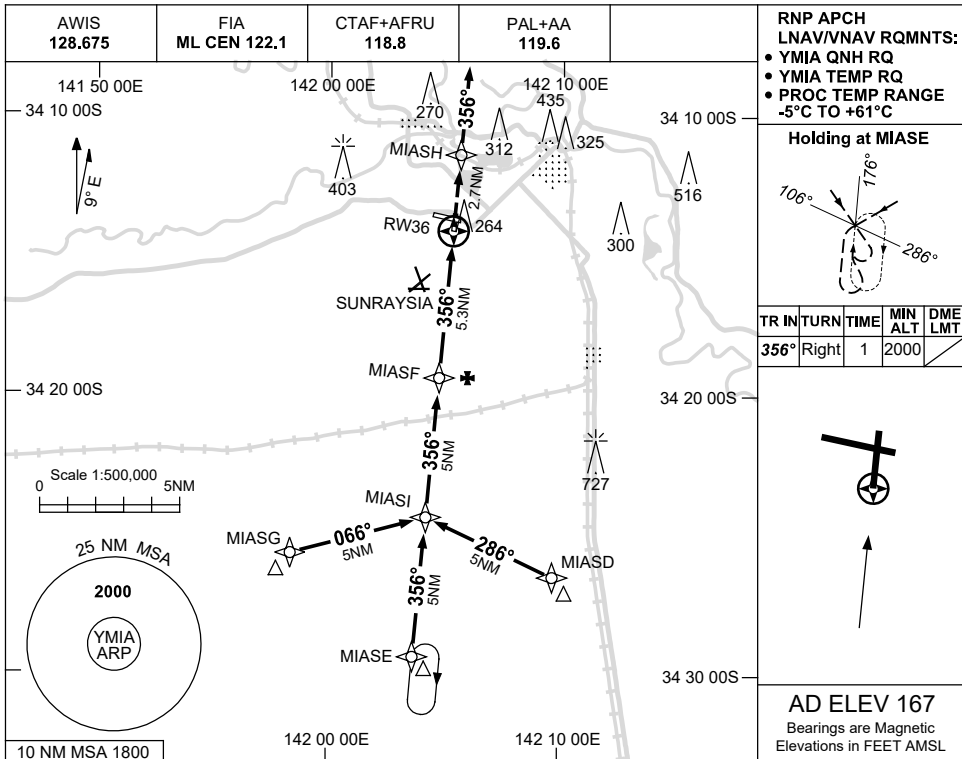
Changes: CHART TITLE, PBN SPECIFICATION BOX, Editorial.

MIAGN03-175

USE QNH

RNP RWY 36
MILDURA, VIC (YMIA)

15 JUN 2023



NOTES

1. MAX IAS:
INITIAL : 210KT.
2. **CAUTION:**
GLIDER OPS 2.3NM
SSW OF YMIA AD
CONFLICTS WITH
FINAL APPROACH .

CATEGORY	A	B	C	D
LNAV/VNAV	470 (305-1.7)			NOT APPLICABLE
LNAV	660 (493-2.8)			
CIRCLING	840 (673-2.4)		900 (733-4.0)	980 (813-5.0)
ALTERNATE	(1173-4.4)		(1233-6.0)	(1313-7.0)

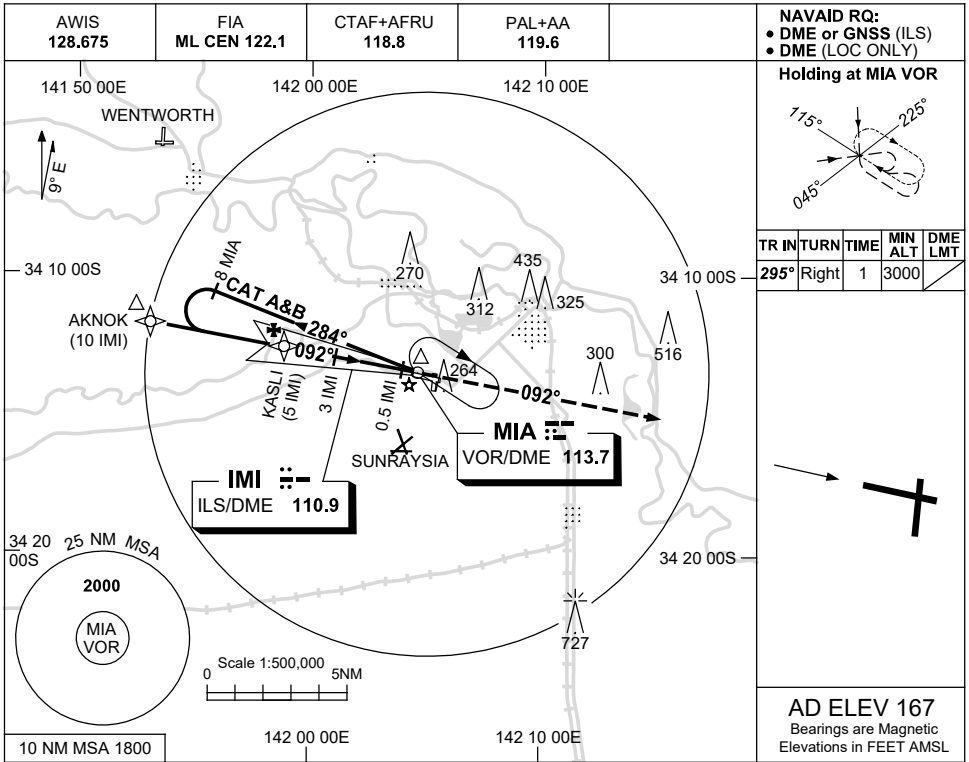
Changes: CHART TITLE, PBN SPECIFICATION BOX, Editorial.

MIAGN04-175

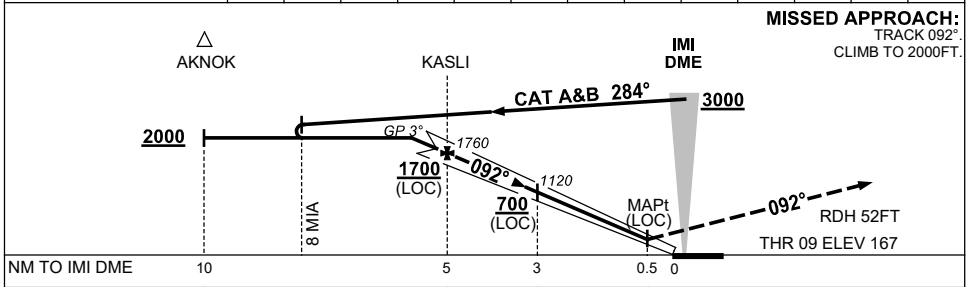
USE QNH

ILS-Z or LOC-Z RWY 09
MILDURA, VIC (YMIA)

23 MAR 2023



NM TO IMI DME	5.8	5	4	3	2	1.6							
ALT (3° APCH PATH)	2000	1760	1440	1120	800	660							



NOTES

CATEGORY	A	B	C	D
S-I ILS	470 (303) 1.7 (VIS 1.5 WITH ACTUAL QNH)		NOT APPLICABLE	
S-I LOC	660 (493-2.8)			
CIRCLING	840 (673-2.4)			
ALTERNATE	(1173-4.4)			

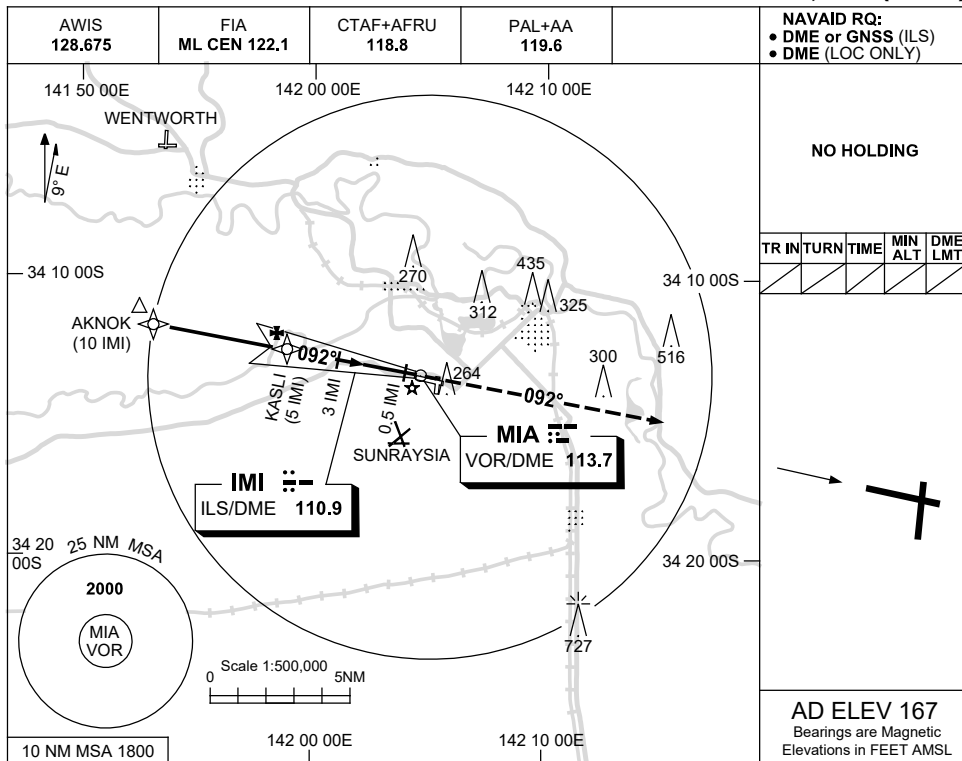
Changes: FROM SUP H113/22 AND SUNRAYSLA ALA.

MIAI01-174

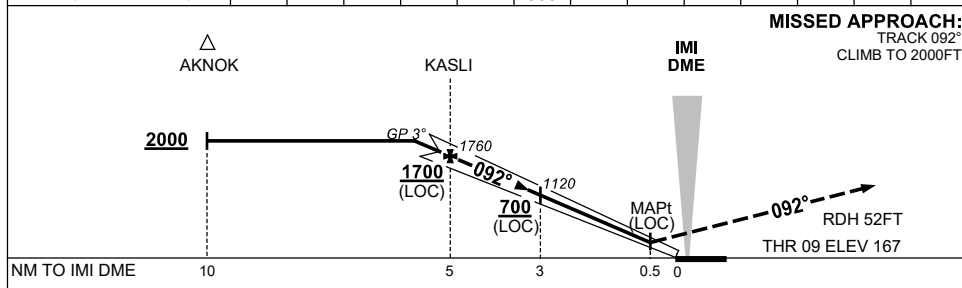
USE QNH

ILS-Y or LOC-Y RWY 09
MILDURA, VIC (YMIA)

23 MAR 2023



NM TO IMI DME	5.8	5	4	3	2	1.6							
ALT (3° APCH PATH)	2000	1760	1440	1120	800	660							



NM TO IMI DME	10												
NM TO THR 09	9.8			4.8	2.8	0.3							

NOTES

CATEGORY	A	B	C	D
S-I ILS	NOT APPLICABLE		470 (303) 1.7 (VIS 1.5 WITH ACTUAL QNH)	
S-I LOC			660 (493-2.8)	
CIRCLING			900 (733-4.0)	980 (813-5.0)
ALTERNATE			(1233-6.0)	(1313-7.0)

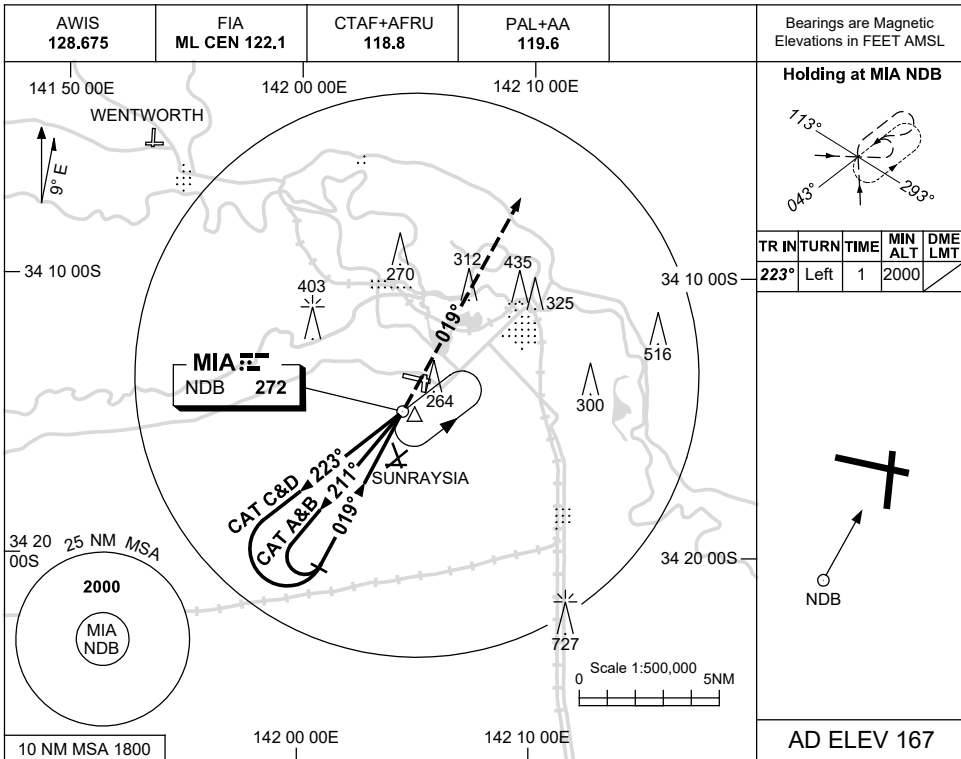
Changes: FROM SUP H113/22 AND SUNRAYSIA ALA.

MIAI02-174

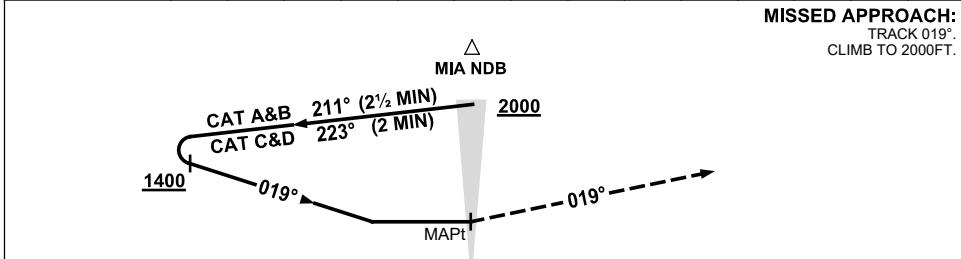
USE QNH

NDB-A
MILDURA, VIC (YMIA)

23 MAR 2023



DME DIST	NOT APPLICABLE									
ALT										



NOTES

CATEGORY	A	B	C	D
CIRCLING	840 (673-2.4)		900 (733-4.0)	980 (813-5.0)
ALTERNATE	(1173-4.4)		(1233-6.0)	(1313-7.0)

1. MAX IAS:
INITIAL: 210KT.
2. **CAUTION:**
GLIDERS OPS FM STRIP 2.3NM SSW OF YMIA AD.

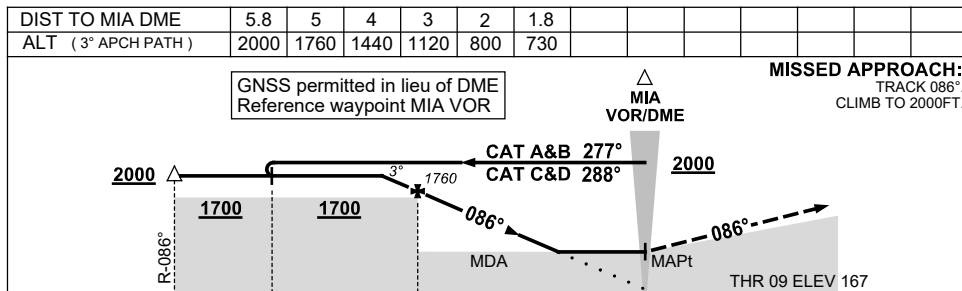
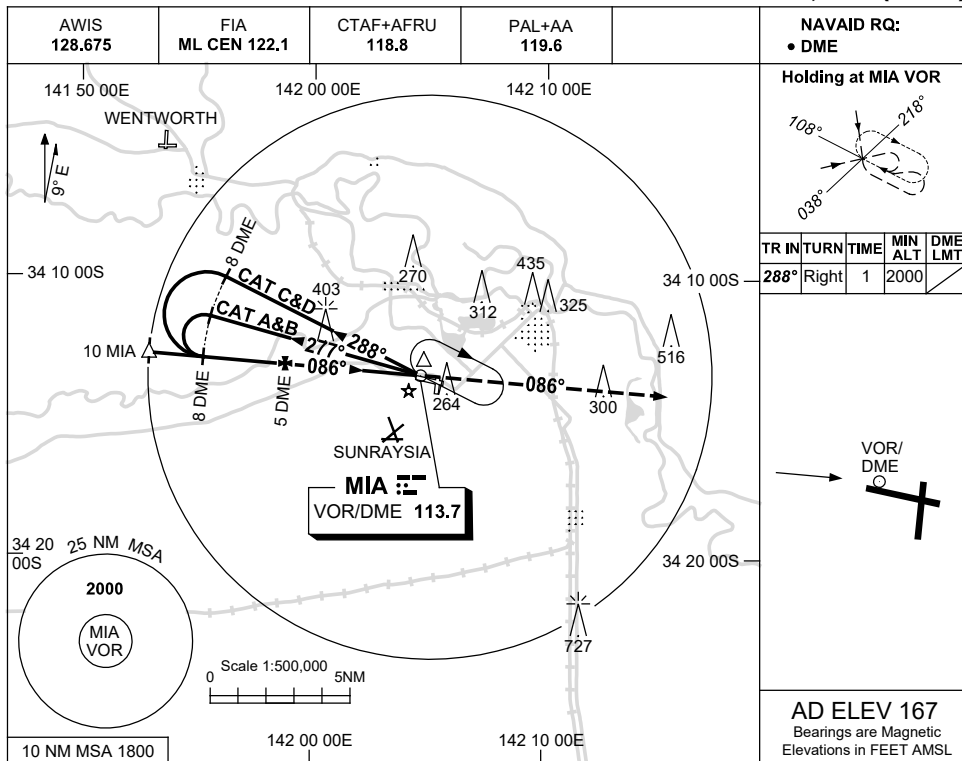
Changes: SUNRAYSIA ALA.

MIANB01-174

USE QNH

VOR-Z RWY 09
MILDURA, VIC (YMIA)

23 MAR 2023



CATEGORY	A	B	C	D
S-I VOR/DME	730 (563-3.2)			
CIRCLING	840 (673-2.4)	900 (733-4.0)	980 (813-5.0)	
ALTERNATE	(1173-4.4)	(1233-6.0)	(1313-7.0)	

NOTES
1. MAX IAS:
INITIAL : 210KLT.

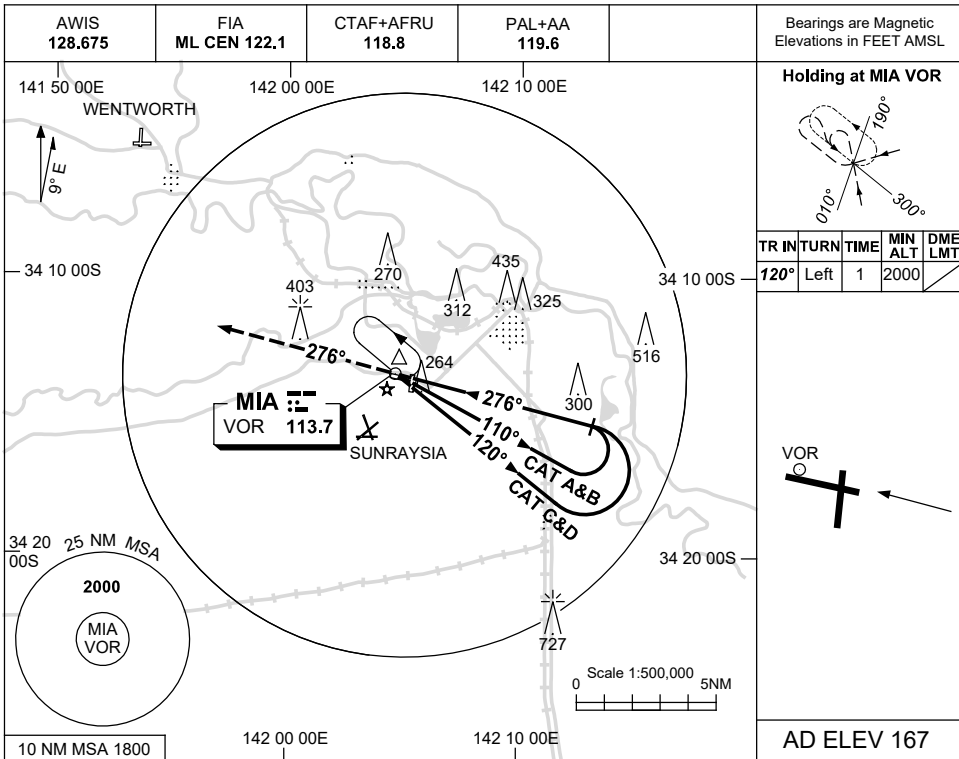
Changes: SUNRAYSIA ALA.

MIAVO01-174

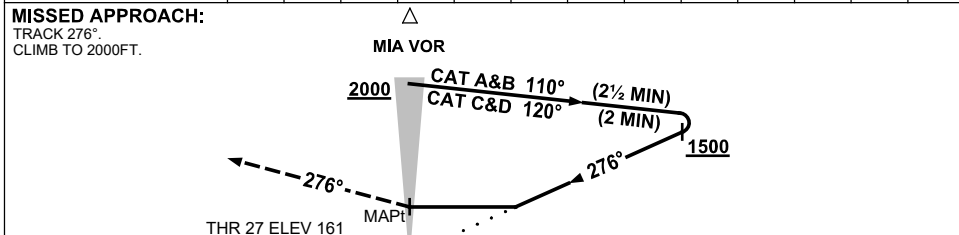
USE QNH

VOR-Y RWY 27
MILDURA, VIC (YMIA)

23 MAR 2023



DIST BY DME	NOT APPLICABLE
ALT (3° APCH PATH)	



NOTES

- MAX IAS:
INITIAL : 210KT.

CATEGORY	A	B	C	D
S-I VOR	840 (673-3.8)			
CIRCLING	840 (673-2.4)	900 (733-4.0)	980 (813-5.0)	
ALTERNATE	(1173-4.4)	(1233-6.0)	(1313-7.0)	

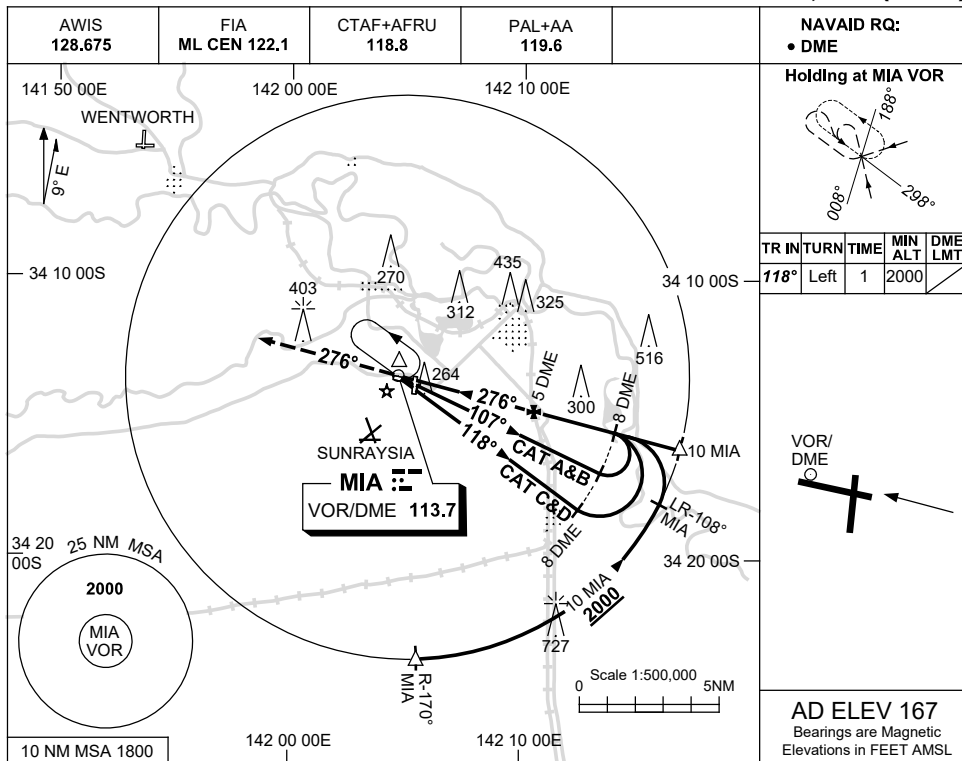
Changes: SUNRAYSLA ALA.

MIAVO02-174

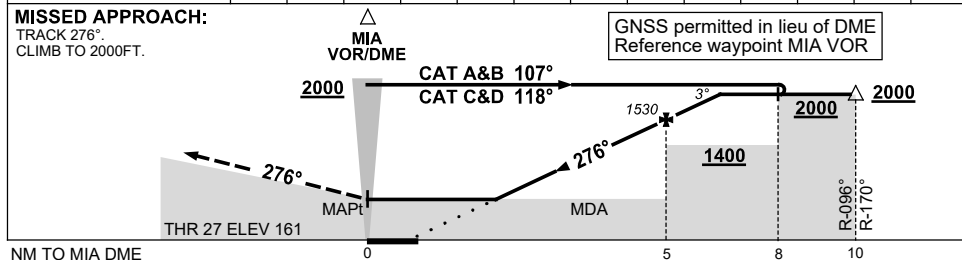
USE QNH

VOR-Z RWY 27
MILDURA, VIC (YMIA)

23 MAR 2023



DIST TO MIA DME	2.3	3	4	5	6	6.5							
ALT (3° APCH PATH)	660	900	1220	1530	1850	2000							



NOTES

CATEGORY	A	B	C	D
S-I VOR/DME	660 (493-2.8)			
CIRCLING	840 (673-2.4)	900 (733-4.0)	980 (813-5.0)	
ALTERNATE	(1173-4.4)	(1233-6.0)	(1313-7.0)	

1. MAX IAS: INITIAL : 210KT.

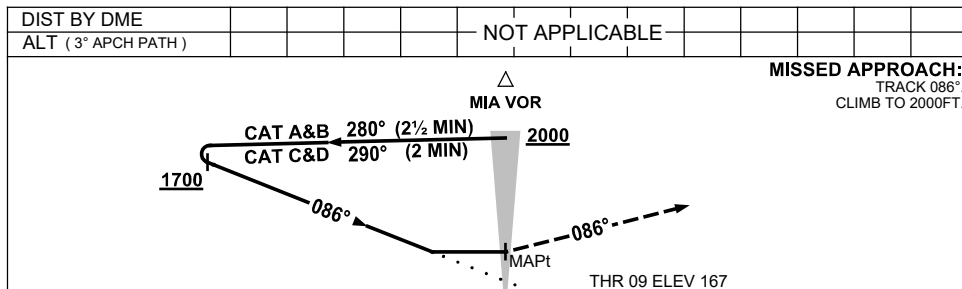
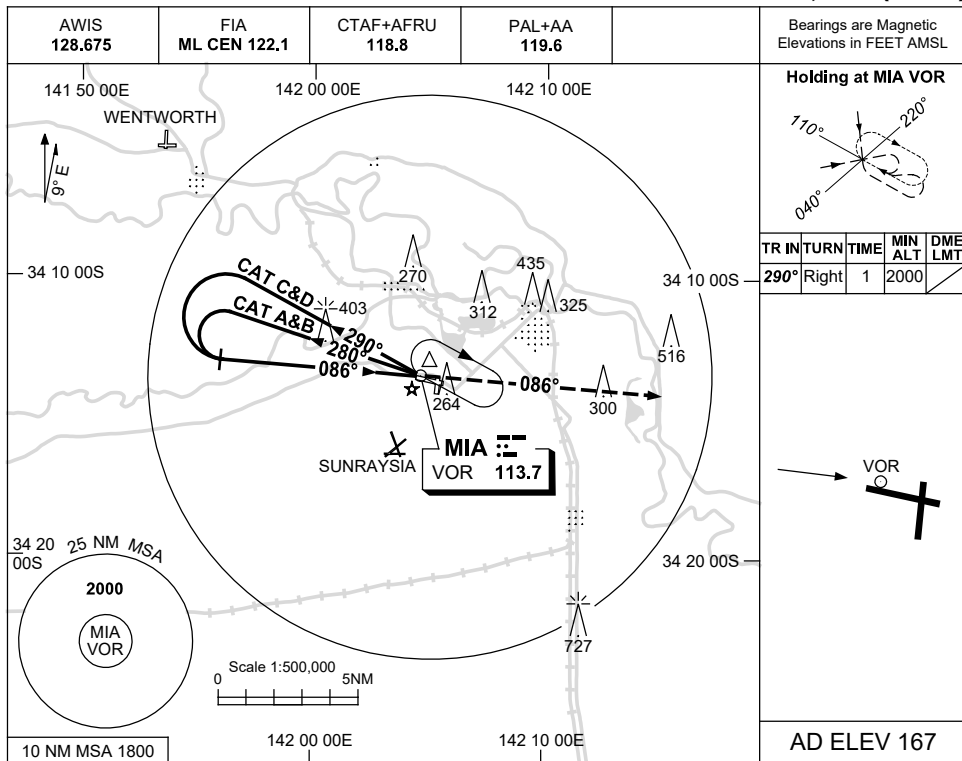
Changes: SUNRAYSIA ALA.

MIAVO03-174

USE QNH

VOR-Y RWY 09
MILDURA, VIC (YMIA)

23 MAR 2023



NOTES

- MAX IAS:
INITIAL : 210KT.

CATEGORY	A	B	C	D
S-I VOR	780 (613-3.5)			
CIRCLING	840 (673-2.4)	900 (733-4.0)	980 (813-5.0)	
ALTERNATE	(1173-4.4)	(1233-6.0)	(1313-7.0)	

Changes: SUNRAYSLA ALA.

MIAVO04-174