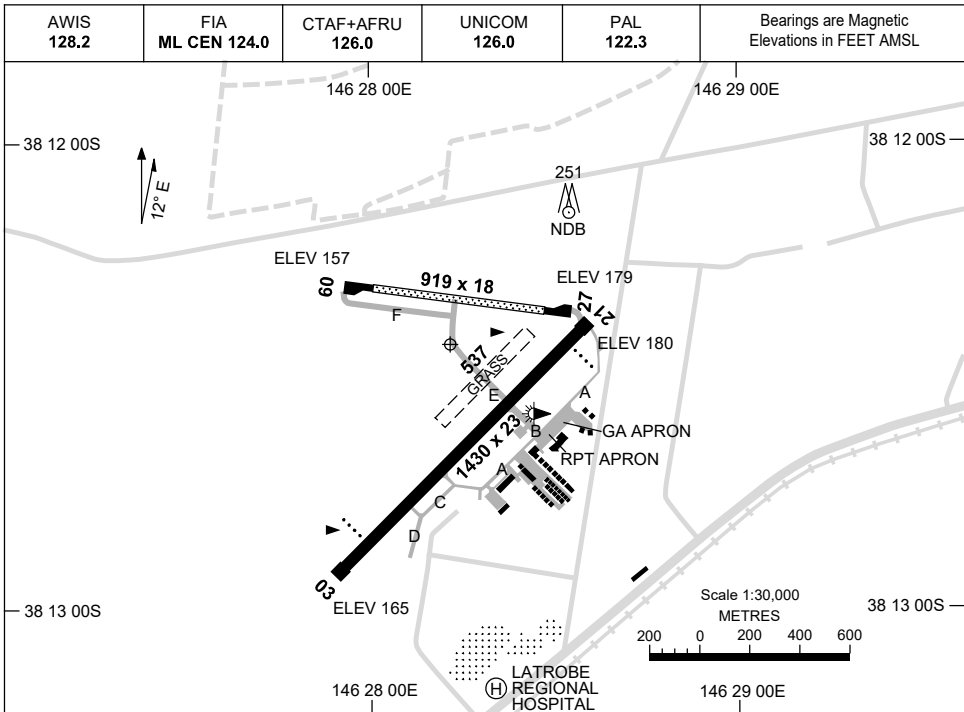


23 MAR 2023

AD ELEV 180  
38 12 26S 146 28 13E

AERODROME CHART  
**LATROBE VALLEY, VIC (YLTV)**



<b>AERODROME LIGHTING</b>	
<b>RWY</b>	TAXIWAY : BLUE EDGE (CENTRE TWY ONLY) RL : PAL 122.3 , SDBY (5 SEC)
<b>03</b> <sup>033</sup>	PAPI 3.0° 32FT LIRL
<sup>213</sup> <b>21</b>	PAPI 3.0° 32FT LIRL
<b>09</b> <sup>085</sup>	NIL
<sup>265</sup> <b>27</b>	NIL

**NOTES**

Changes: NOTES, TWY, APN AND BUILDINGS.

LTVAD01-174

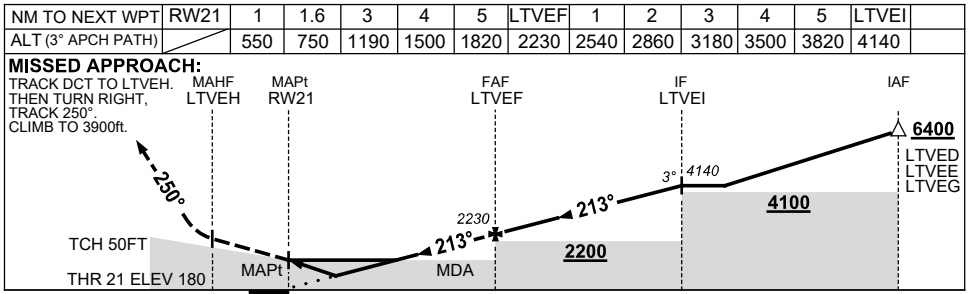
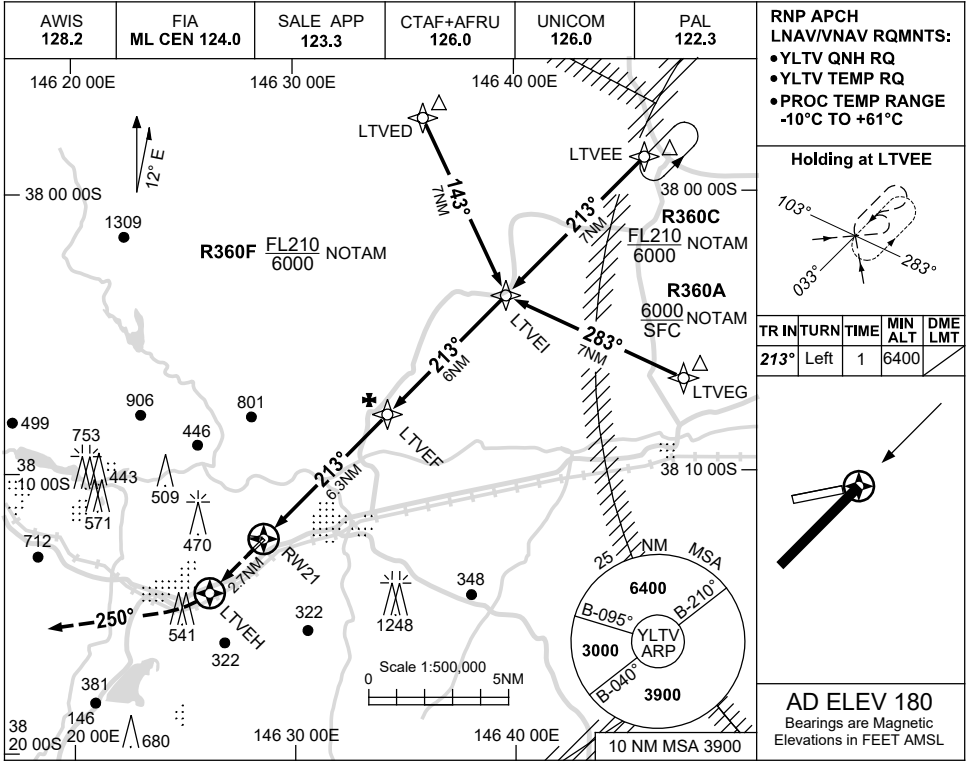


USE QNH

RNP RWY 21

30 NOV 2023

LATROBE VALLEY, VIC (YLTV)



NOTES

- MAX IAS:  
INITIAL : 210KT.
- CAUTION:**  
INITIAL & INTERMEDIATE SEGMENT OVERLAP HOLDING & INITIAL SEGMENTS FOR YWSL RNP RWY 09 PROC.
- INITIAL SEGMENTS INFRINGE R360A/C/F; AWY CLR RQ.

CATEGORY	A	B	C	D
LNAV/VNAV	550 (370-2.1)			NOT APPLICABLE
LNAV	750 (570-3.2)			
CIRCLING	980 (800-2.4)		1470 (1290-4.0)	
ALTERNATE	(1300-4.4)		(1790-6.0)	

Changes: R359A-G DELETED, R360A-F ADDED, NOTE 3, Editorial.

LTVGN02-177

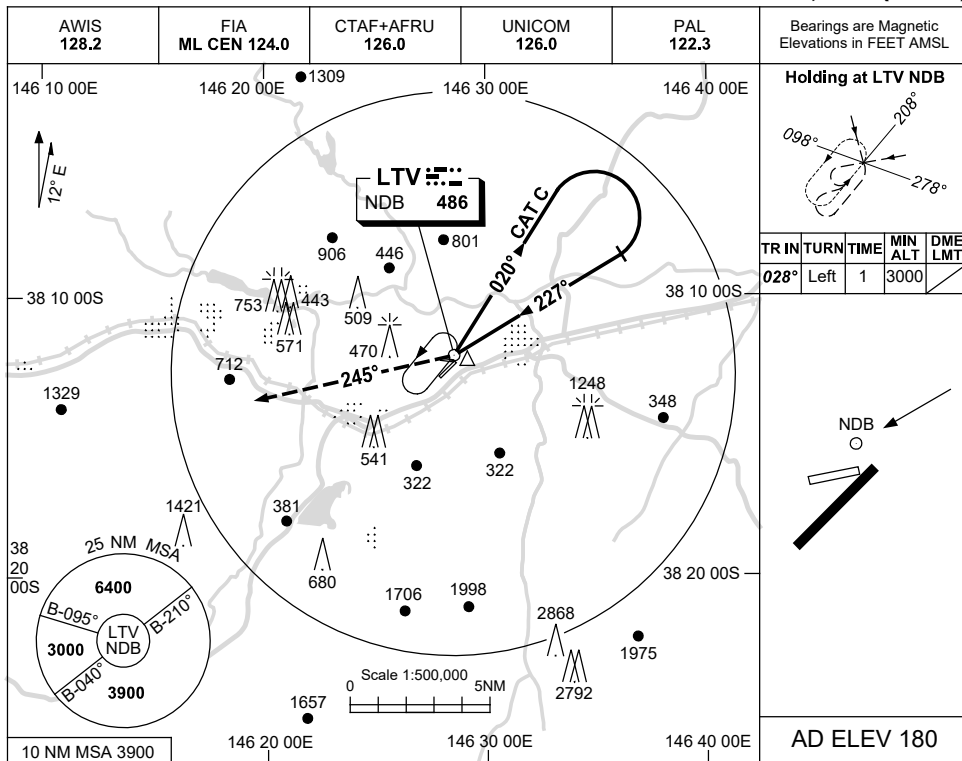


USE QNH

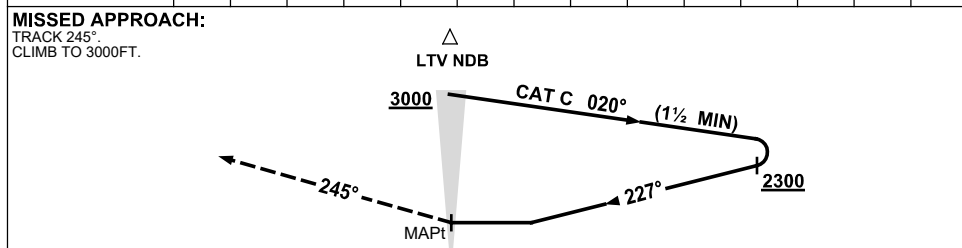
NDB-B

2 DEC 2021

LATROBE VALLEY, VIC (YLTV)



DME DIST	NOT APPLICABLE									
ALT										



**NOTES**

CATEGORY	A	B	C	D
	NOT APPLICABLE			NOT APPLICABLE
CIRCLING			<b>1470</b> (1290-4.0)	
ALTERNATE			(1790-6.0)	

1. MAX IAS:  
INITIAL : 180KT.  
HOLDING: 180KT.

Changes: FROM SUP H83/21.

LTVNB02-169