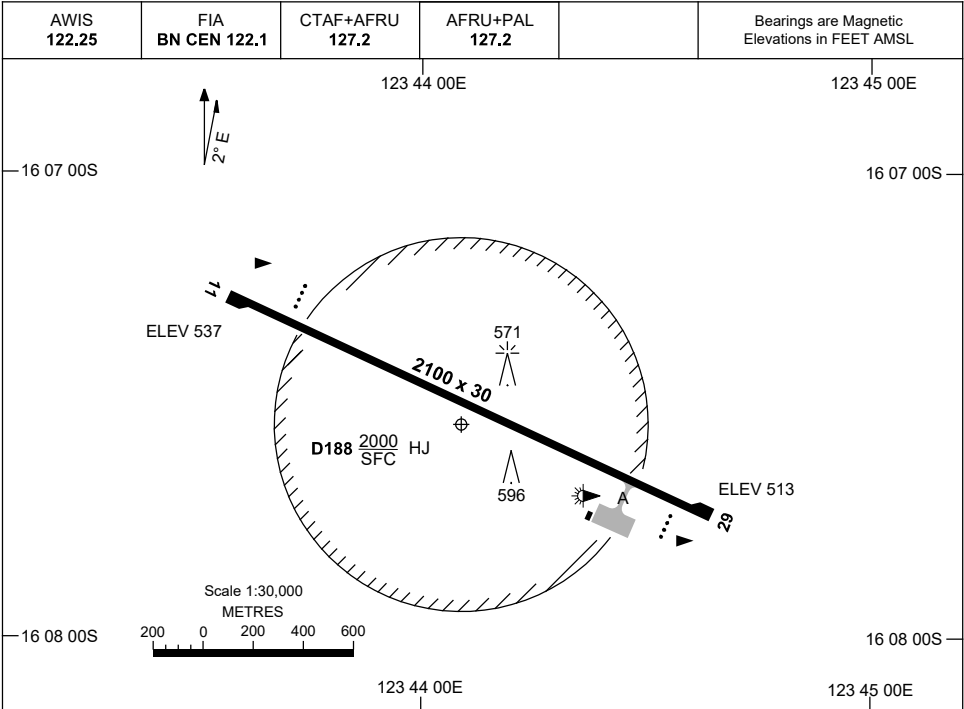


7 SEP 2023

AD ELEV 540  
16 07 33S 123 44 05E

**AERODROME CHART**  
**KOOLAN ISLAND/**  
**KOOLAN CENTRAL, WA (YKLC)**



	<b>AERODROME LIGHTING</b>
<b>RWY</b>	TAXIWAY : BLUE EDGE RL : AFRU+PAL 127.2. SDBY (8 SEC)
<b>11</b> <small>113</small>	PAPI 3.0° 53FT LIRL
<small>293</small> <b>29</b>	PAPI 3.0° 53FT LIRL

**NOTES**

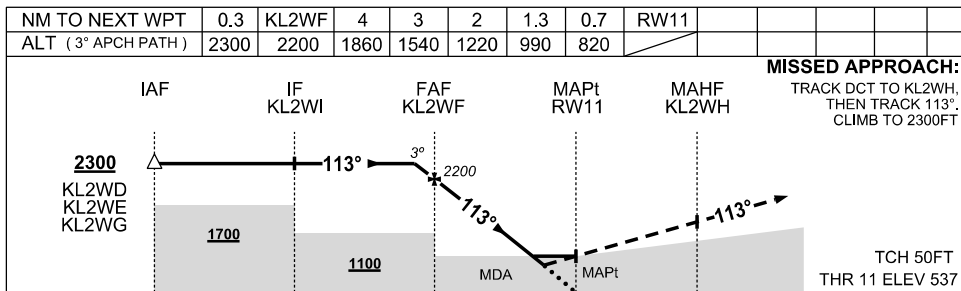
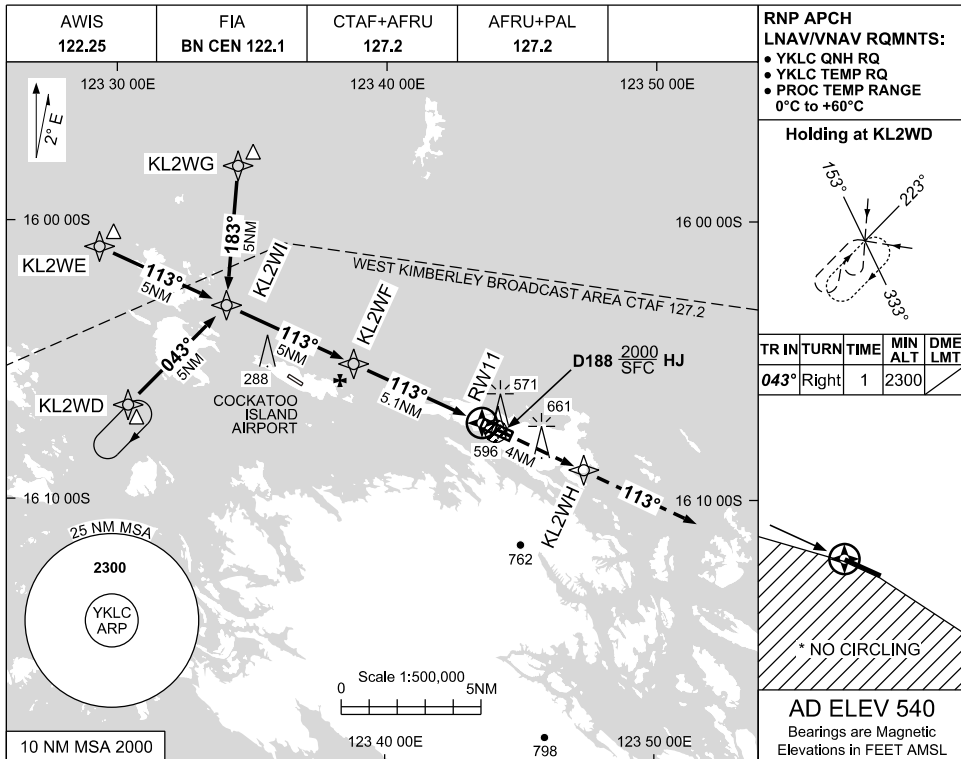
Changes: NOTES REMOVED.

KLCAD01-176

USE QNH

RNP RWY 11  
**KOOLAN ISLAND/**  
**KOOLAN CENTRAL, WA (YKLC)**

7 SEP 2023



**NOTES**

CATEGORY	A	B	C	D
LNAV/VNAV	<b>820 (283-1.6)</b>			
LNAV	<b>990 (450-2.5)</b>			
* CIRCLING	<b>1140 (600-2.4)</b>	<b>1240 (700-4.0)</b>	<b>1330 (790-5.0)</b>	
ALTERNATE	<b>(1100-4.4)</b>	<b>(1200-6.0)</b>	<b>(1290-7.0)</b>	

1. MAX IAS: INITIAL : 210KT  
 2. NO CIRCLING  
 S OF RWY 11/29  
 3. CAUTION: HIGH DENSITY VFR OPS REFER ERSA GEN SP-12

Changes: YKLI Removed, WPT IDENT, EDITORIAL

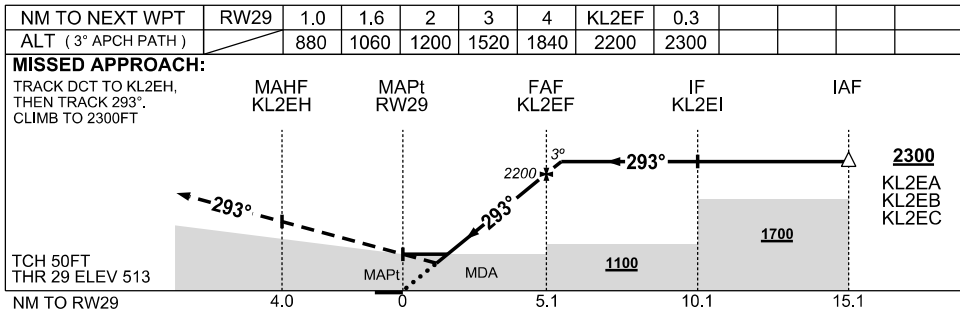
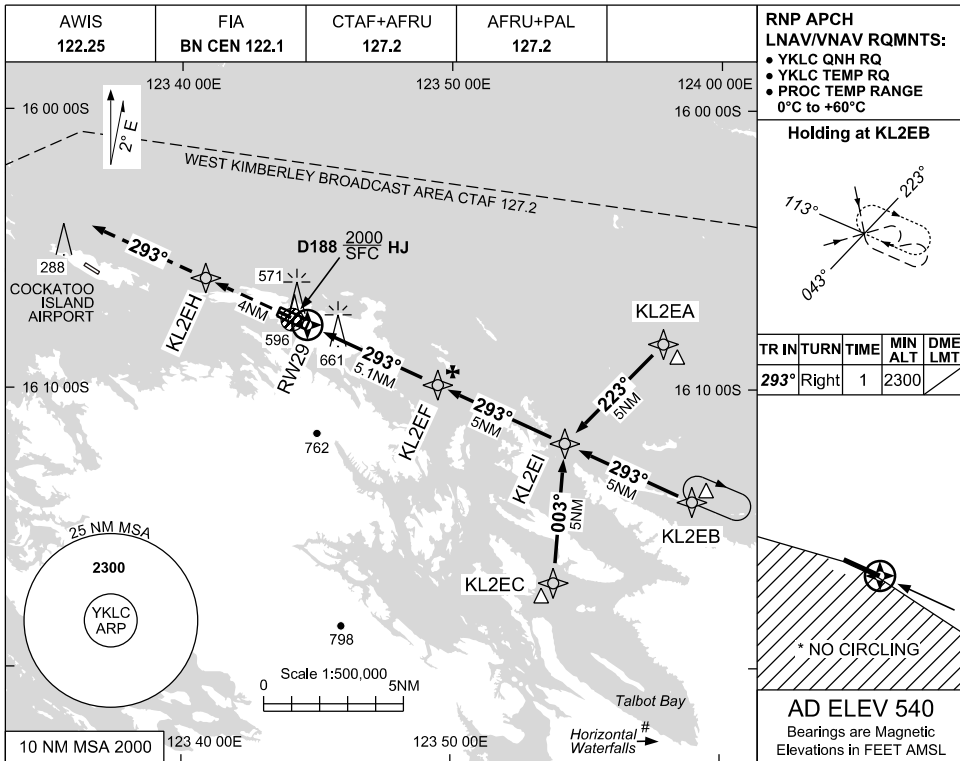
KLCCG01-176



USE QNH

RNP RWY 29  
**KOOLAN ISLAND/  
 KOOLAN CENTRAL, WA (YKLC)**

7 SEP 2023



**NOTES**

1. MAX IAS:  
 INITIAL : 210KT
- \*2. NO CIRCLING  
 S OF RWY 11/29
- #3. CAUTION: HIGH DENSITY VFR OPS REFER ERSA GEN SP-12

CATEGORY	A	B	C	D
LNAV/VNAV		<b>880 (367-2.0)</b>		
LNAV		<b>1060 (547-3.1)</b>		
* CIRCLING	<b>1140 (600-2.4)</b>		<b>1240(700-4.0)</b>	<b>1330(790-5.0)</b>
ALTERNATE	<b>(1100-4.4)</b>		<b>(1200-6.0)</b>	<b>(1290-7.0)</b>

Changes: YKLI Removed, WPT IDENT, EDITORIAL

KLCCG02-176