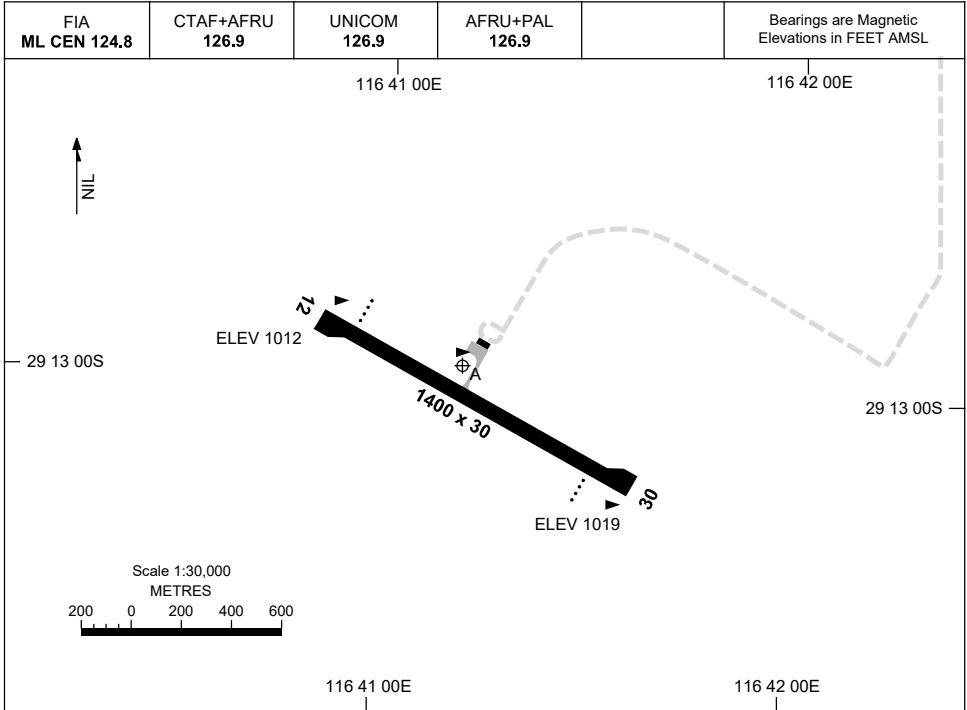


15 JUN 2023

AD ELEV 1019
29 12 58S 116 41 12E

AERODROME CHART
KARARA, WA (YKAR)



	AERODROME LIGHTING
RWY	RL : AFRU+PAL 126.9 ; PTBL IN EMERG ONLY (2 HR PN).
12 ¹¹⁷	PAPI 3.0° 41.5FT PTBL
²⁹⁷ 30	PAPI 3.0° 41.5FT PTBL

NOTES

1. FIA FREQ 124.8 AVBL IN CIRCUIT AREA.
2. PAPI POWER SUPPLIED BY GENERATORS. ALLOW 15 SECONDS FOR GENERATORS TO START UP AND POSITIVE CONFIRMATION OF AD LGT ACTIVATION COMMUNICATED THROUGH CTAF. PAPI INTENSITY HN MANUALLY CONTROLLED BY ARO VIA CTAF 126.9.

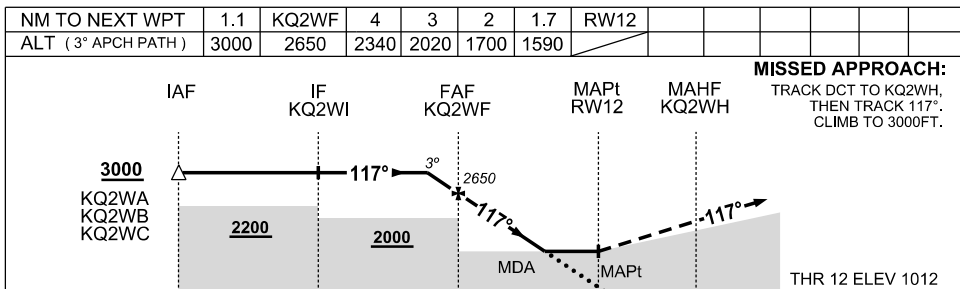
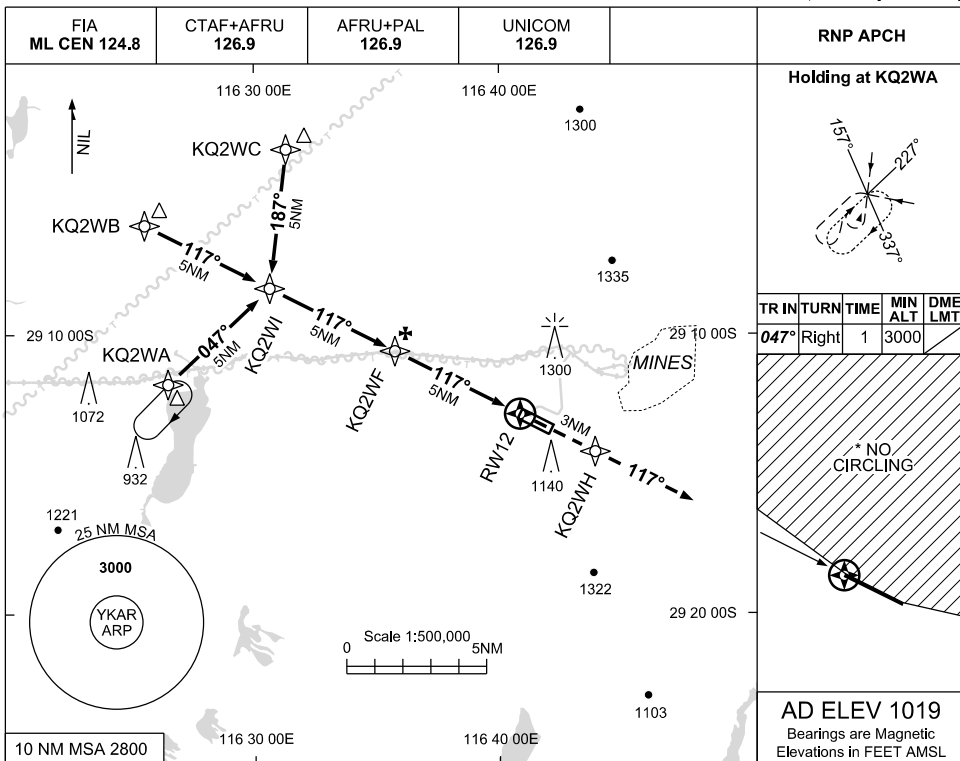
Changes: TWY A AND TERMINAL.

KARAD01-175

7 SEP 2023

USE QNH

RNP RWY 12
KARARA, WA (YKAR)



NOTES

CATEGORY	A	B	C	D
LNAV	1590 (571-3.2)			NOT AUTHORISED
CIRCLING *	1740 (721-2.4)		1910(891-4.0)	
ALTERNATE	(1221-4.4)		(1391-6.0)	

1. MAX IAS : INITIAL: 210KT
 *2. NO CIRCLING NORTH OF RWY 12/30.

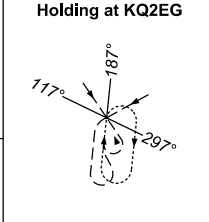
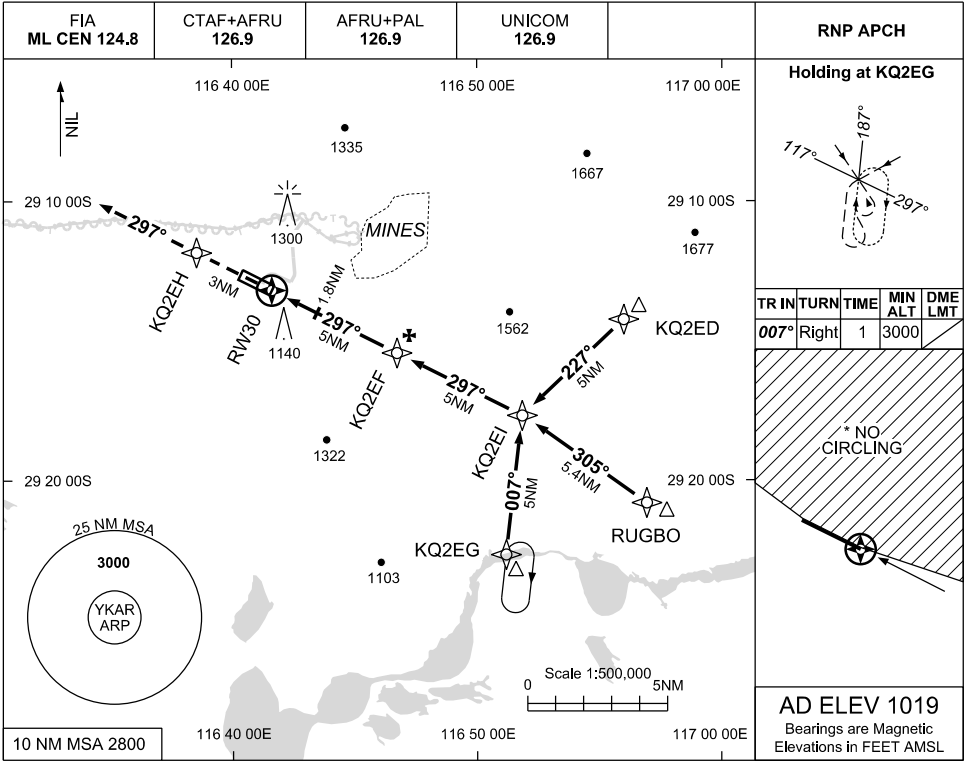
Changes: CHART TITLE, PBN SPECIFICATION BOX, EDITORIAL

KARGN01-176

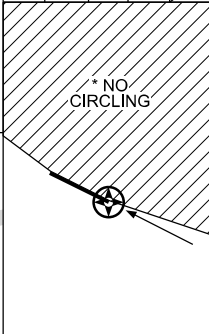
USE QNH

RNP RWY 30
KARARA, WA (YKAR)

7 SEP 2023

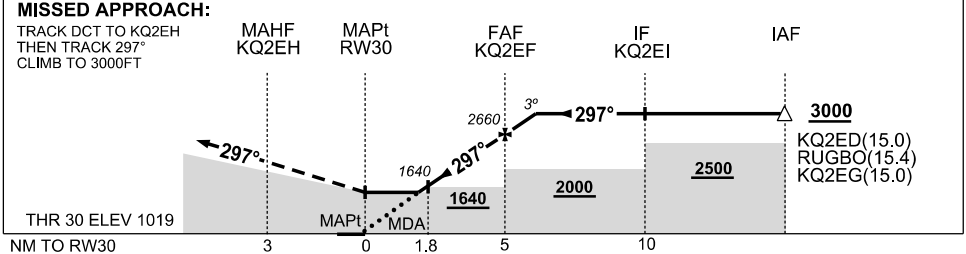


TR IN	TURN	TIME	MIN ALT	DME LMT
007°	Right	1	3000	



AD ELEV 1019
 Bearings are Magnetic
 Elevations in FEET AMSL

NM TO NEXT WPT	RW30	1.8	2	3	4	KQ2EF	1.1				
ALT (3° APCH PATH)		1640	1710	2020	2340	2660	3000				



NOTES

CATEGORY	A	B	C	D
LNAV	1640 (621-3.4)			NOT AUTHORISED
CIRCLING *	1740 (721-2.4)		1910(891-4.0)	
ALTERNATE	(1221-4.4)		(1391-6.0)	

1. MAX IAS : INITIAL: 210KT
 *2. NO CIRCLING NORTH OF RWY 12/30.

Changes: CHART TITLE, PBN SPECIFICATION BOX, EDITORIAL

KARGN02-176

