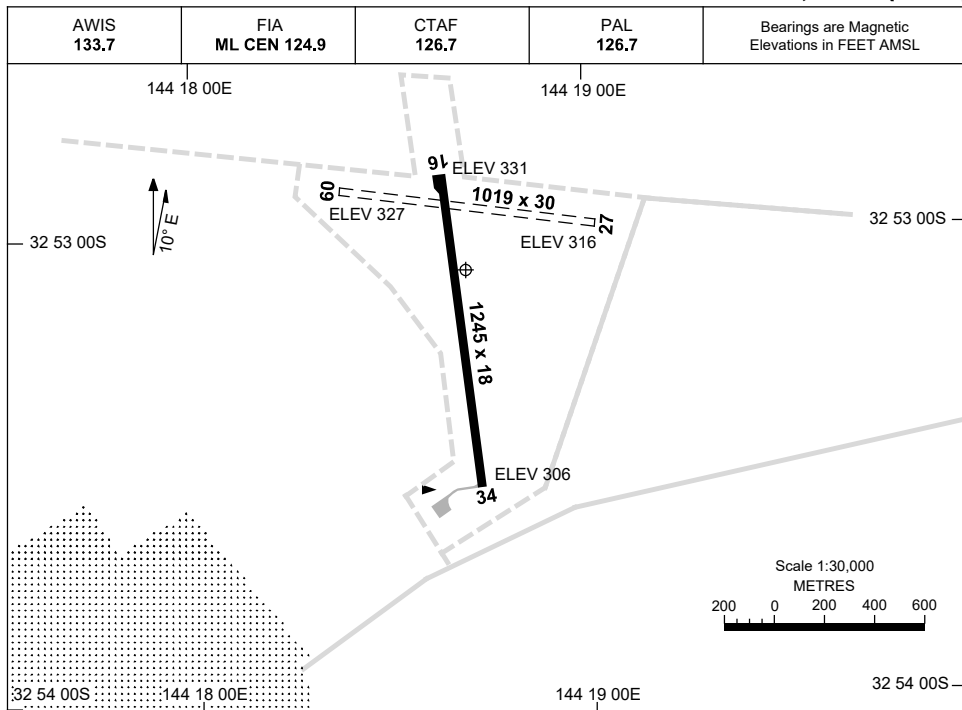


23 MAR 2023

AD ELEV 332  
32 53 05S 144 18 42E

AERODROME CHART  
**IVANHOE, NSW (YIVO)**



	<b>AERODROME LIGHTING</b>
<b>RWY</b>	TAXIWAY : BLUE EDGE RL : PAL 126.7, SDBY (15 MIN PN) FOR MEDI FLIGHTS ONLY
<b>16</b> <small>164</small>	LIRL
<small>344</small> <b>34</b>	LIRL

**NOTES**

1. AWIS PHONE 02 9353 6428.
2. ML CEN FIA 124.9 AVBL ABV 3500FT.

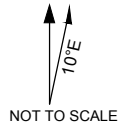
Changes: CAUTION NOTE REMOVED.

IVOAD01-174

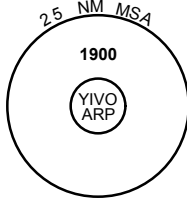
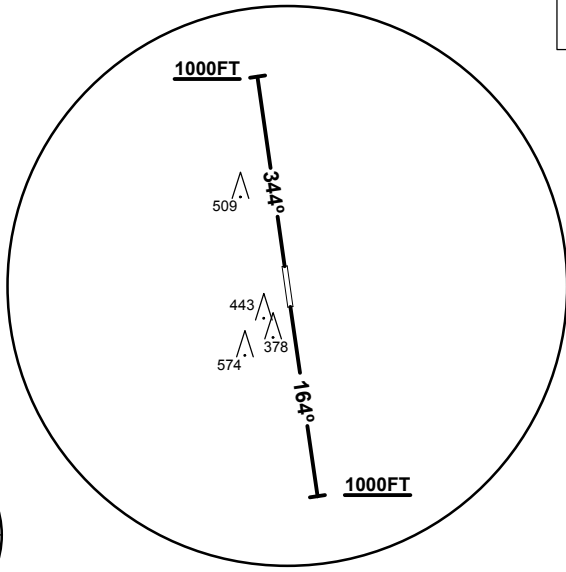
**STANDARD INSTRUMENT DEPARTURE**  
**IVANHOE ONE DEPARTURE**  
**IVANHOE, NSW (YIVO)**

5 NOV 2020

AWIS 133.7	FIA ML CEN 124.9	CTAF 126.7	PAL 126.7	BRG are MAG ELEV in FEET AMSL
---------------	---------------------	---------------	--------------	----------------------------------



**SPEED**  
**MAX IAS 250KT**  
**BELOW 10,000FT**



10 NM MSA 1600

**IVANHOE ONE DEPARTURE**

**RWY 16**

- Track 164°
- At or above 1000FT turn as required
- Continue climb to 1900FT
- Intercept flight plan route

**RWY 34**

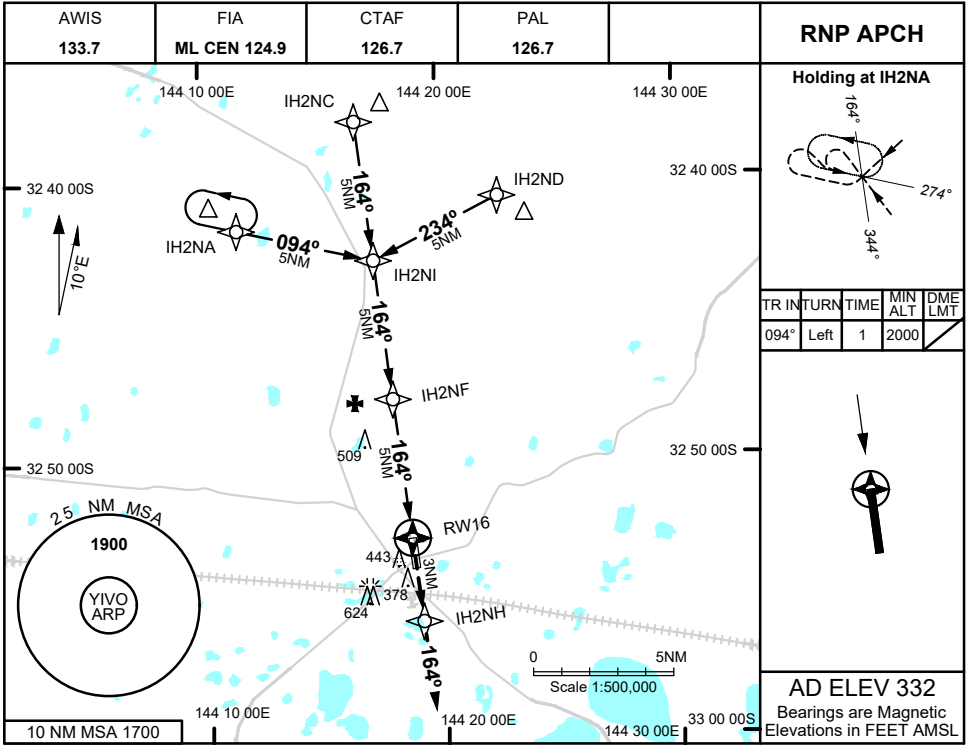
- Track 344°
- At or above 1000FT turn as required
- Continue climb to 1900FT
- Intercept flight plan route

**NOTES**

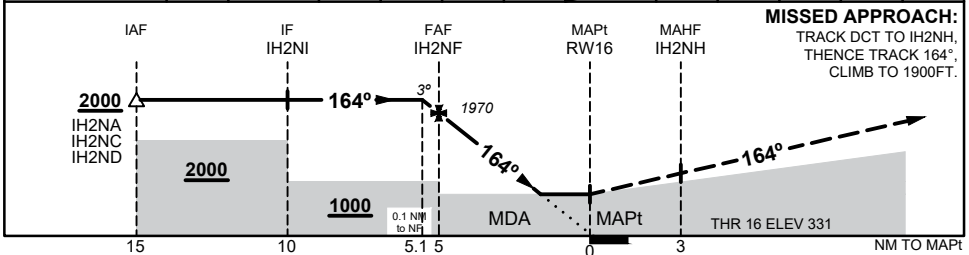
- NIL -



23 MAR 2023



NM TO NEXT WPT	0.1	IH2NF	4	3	2	1.4	RW16				
ALT (3° APCH PATH)	2000	1970	1650	1340	1020	840					

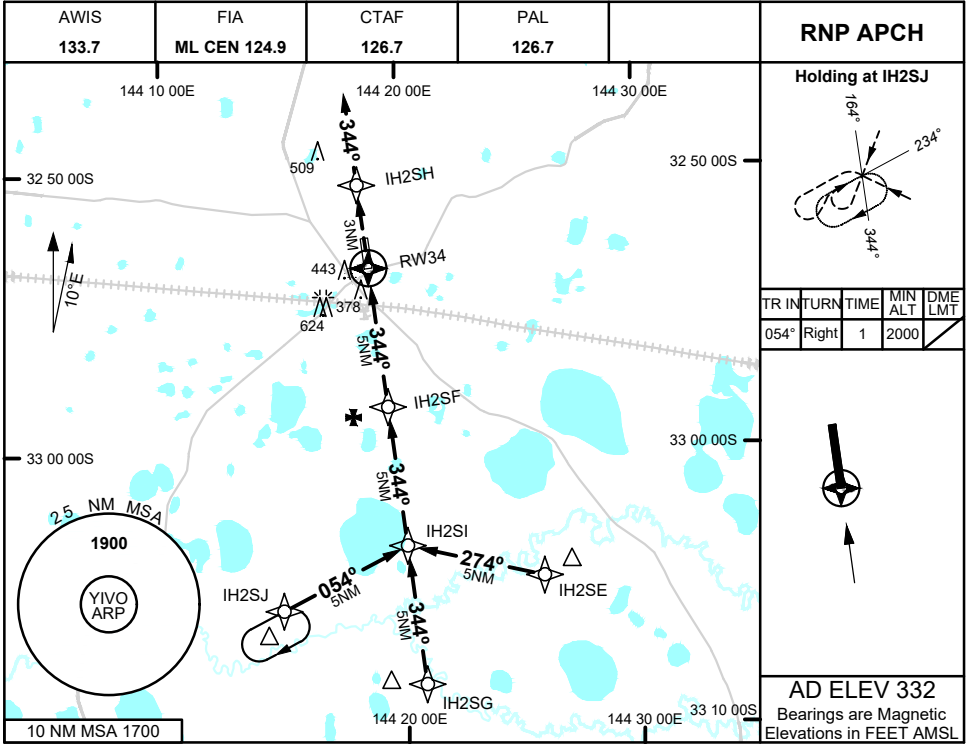


- NOTES**
- MAX IAS:  
INITIAL : 210KTS

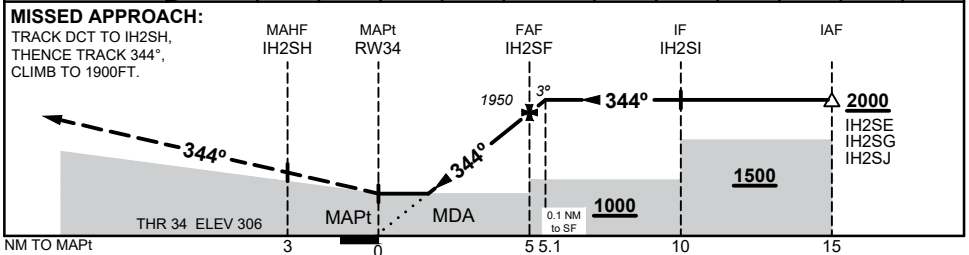
CATEGORY	A	B	C	D
LNAV	<b>840 (508 - 2.9)</b>			NOT APPLICABLE
CIRCLING	<b>1040 (708 - 2.4)</b>		<b>1140 (808 - 4.0)</b>	
ALTERNATE	(1208 - 4.4)		(1308 - 6.0)	

Changes: CIRCLING MINIMA, ALTERNATE MINIMA, 10 NM MSA, 624 FT OBST, Editorial I/VOGN01-174

23 MAR 2023



NM TO NEXT WPT	RW34	1.5	2	3	4	IH2SF	0.1						
ALT (3° APCH PATH)		840	990	1310	1630	1950	2000						



**NOTES**

- MAX IAS:  
INITIAL : 210KTS

CATEGORY	A	B	C	D
LNAV	<b>840 (534 - 3.0)</b>			NOT APPLICABLE
CIRCLING	<b>1040 (708 - 2.4)</b>	<b>1140 (808 - 4.0)</b>		
ALTERNATE	(1208 - 4.4)		(1308 - 6.0)	

Changes: CIRCLING MINIMA, ALTERNATE MINIMA, 10 NM MSA, 624 FT OBST, Editorial

IVOGN02-174

