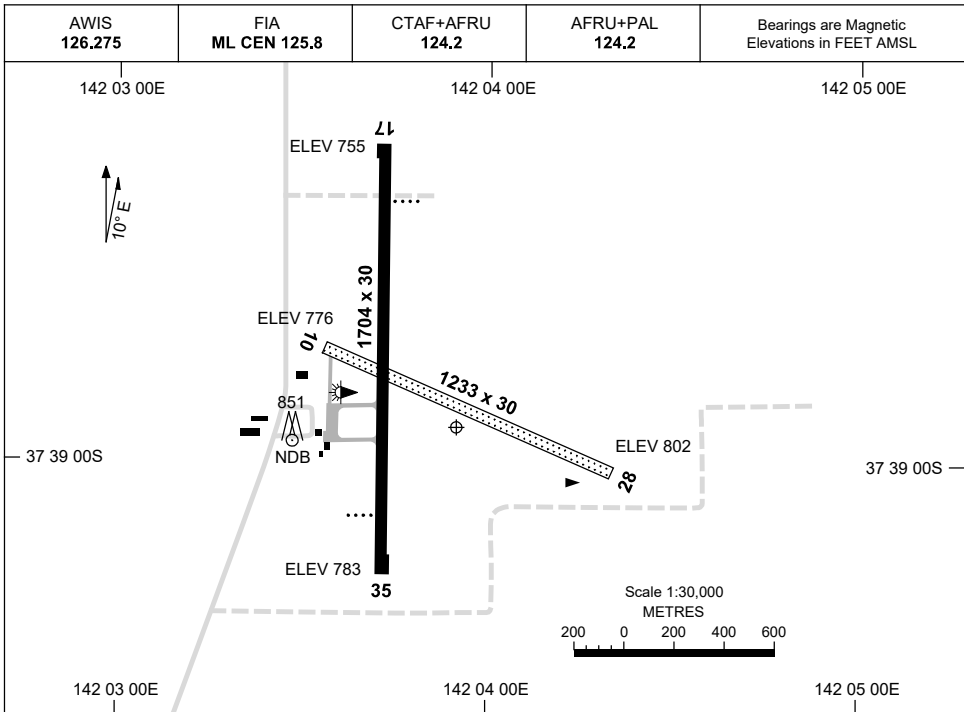


30 NOV 2023

AD ELEV 803  
37 38 56S 142 03 55E

AERODROME CHART  
**HAMILTON, VIC (YHML)**



	<b>AERODROME LIGHTING</b>	
<b>RWY</b>	TAXIWAY : BLUE EDGE RL : AFRU+PAL 124.2 , SDBY (30 SEC)	
<b>17</b> <small>170</small>	PAPI 3.0° 28.9FT LIRL	
<small>350</small> <b>35</b>	PAPI 3.0° 22FT LIRL	
<b>10</b> <small>103</small>	NIL	
<small>283</small> <b>28</b>	NIL	

**NOTES**

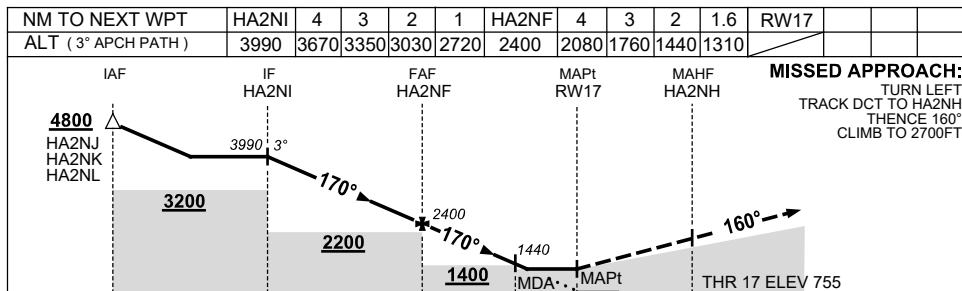
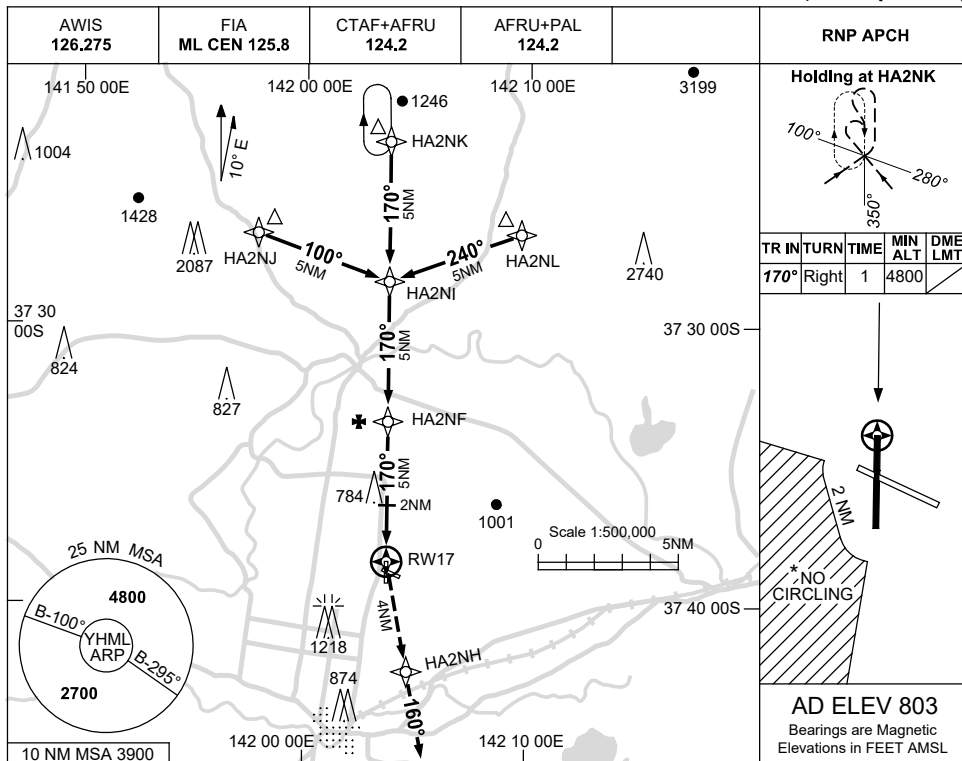
Changes: RWY 35 PAPI EYE HEIGHT.

HMLAD01-177

USE QNH

RNP RWY 17  
HAMILTON, VIC (YHML)

30 NOV 2023



NOTES

CATEGORY	A	B	C	D
LNAV	1310 (555-3.1)			NOT APPLICABLE
CIRCLING *	1450 (647-2.4)		1550 (747-4.0)	
ALTERNATE	(1147-4.4)		(1247-6.0)	

- 1. MAX IAS: INITIAL : 210KT.
- \*2. NO CIRCLING IN SECTOR STH OF RWY 10/28 AND WEST OF RWY 17/35 BEYOND 2NM.

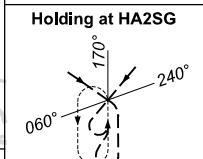
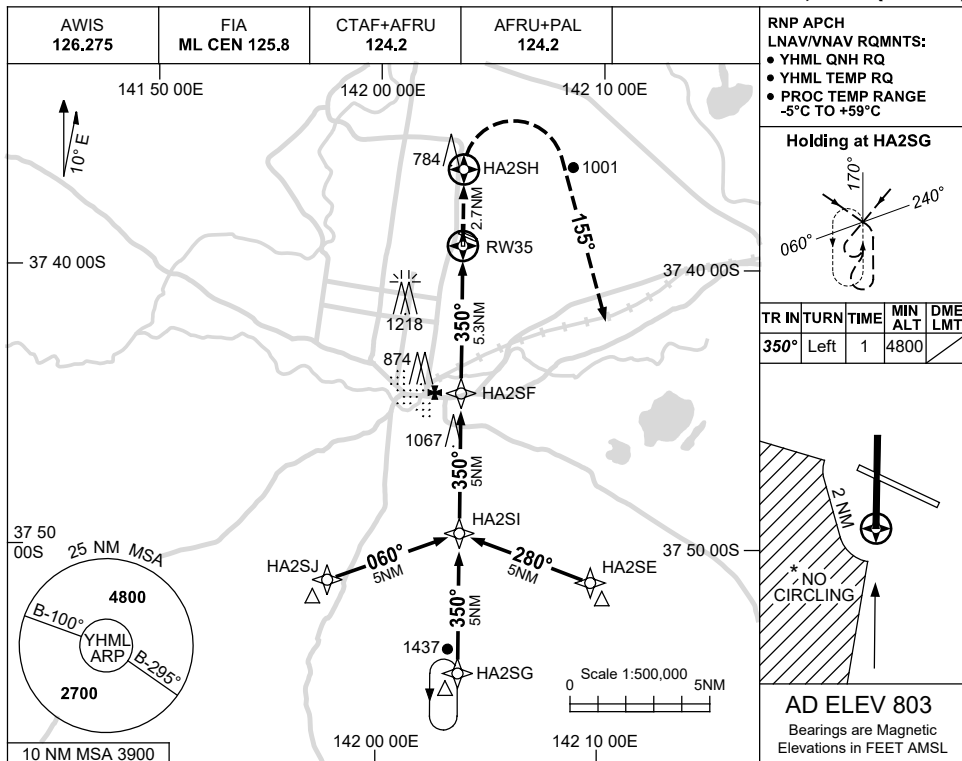
Changes: MINIMA, DIST/ALT TABLE, SDF MOCA, WPT NAMES, NEW LOGO, Editorial.

HMLGN01-177

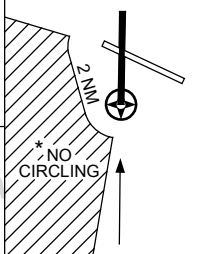
USE QNH

RNP RWY 35  
HAMILTON, VIC (YHML)

30 NOV 2023

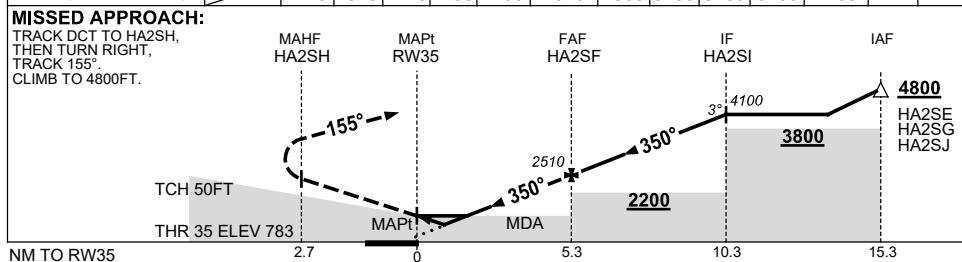


TR IN	TURN	TIME	MIN ALT	DME LMT
350°	Left	1	4800	



**AD ELEV 803**  
Bearings are Magnetic  
Elevations in FEET AMSL

NM TO NEXT WPT	RW35	1	1.6	2	3	4	HA2SF	1	2	3	4	HA2SI		
ALT (3° APCH PATH)		1140	1340	1470	1790	2100	2510	2830	3150	3460	3780	4100		



**NOTES**

CATEGORY	A	B	C	D
LNAV/VNAV		1140 (357-2.0)		NOT APPLICABLE
LNAV		1340 (557-3.2)		
CIRCLING*	1450 (647-2.4)		1550 (747-4.0)	
ALTERNATE	(1147-4.4)		(1247-6.0)	

- MAX IAS: INITIAL : 210KT.
- \* 2. NO CIRCLING IN SECTOR STH OF RWY 10/28 AND WEST OF RWY 17/35 BEYOND 2NM.

Changes: WPT NAMES, NEW LOGO, Editorial.

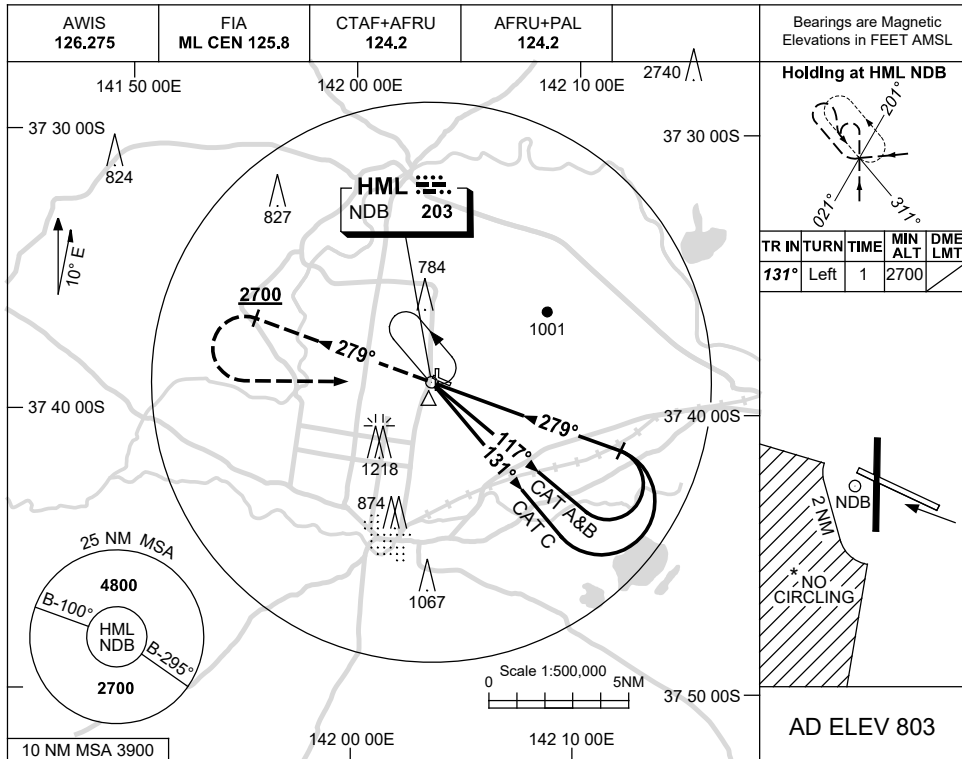
HMLGN02-177

USE QNH

NDB-A

30 NOV 2023

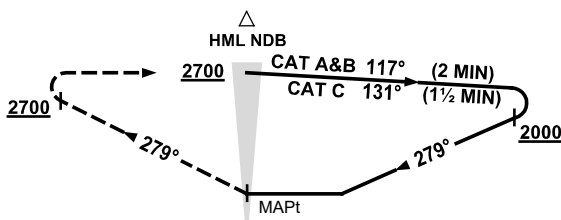
HAMILTON, VIC (YHML)



DME DIST	NOT APPLICABLE									
ALT										

**MISSED APPROACH:**

TRACK 279°.  
CLIMB TO 2700FT.  
AT 2700FT TURN LEFT.  
TRACK DCT TO NDB.



**NOTES**

1. MAX IAS:  
INITIAL : 210KT.
- \*2. NO CIRCLING IN  
SECTOR STH OF RWY  
10/28 AND WEST OF  
RWY 17/35 BEYOND  
2NM.

CATEGORY	A	B	C	D
				NOT APPLICABLE
CIRCLING *	1450 (647-2.4)	1550 (747-4.0)		
ALTERNATE	(1147-4.4)	(1247-6.0)		

Changes: MAG TRACKS, NEW LOGO, Editorial.

HMLNB01-177