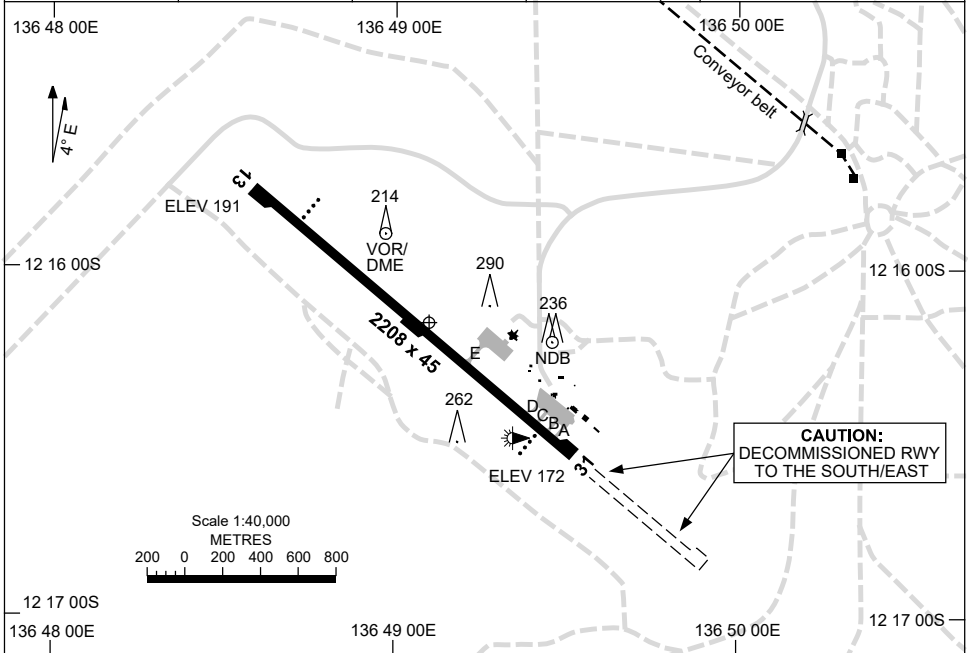


7 SEP 2023

AD ELEV 205
12 16 10S 136 49 06E

AERODROME CHART
GOVE, NT (YPGV)

AWIS 123.05	FIA BN CEN 125.0	CTAF+AFRU 127.8	AFRU+PAL 127.8	Bearings are Magnetic Elevations in FEET AMSL
----------------	---------------------	--------------------	-------------------	--



RWY		AERODROME LIGHTING
		TAXIWAY : BLUE EDGE RL : AFRU+PAL 127.8 , SDBY
13 ¹²⁶		PAPI 3.0° 52FT LIRL
³⁰⁶ 31		PAPI 3.0° 52FT LIRL

NOTES

1. AWIS RQ ONE-SECOND PULSE TO ACTIVATE.

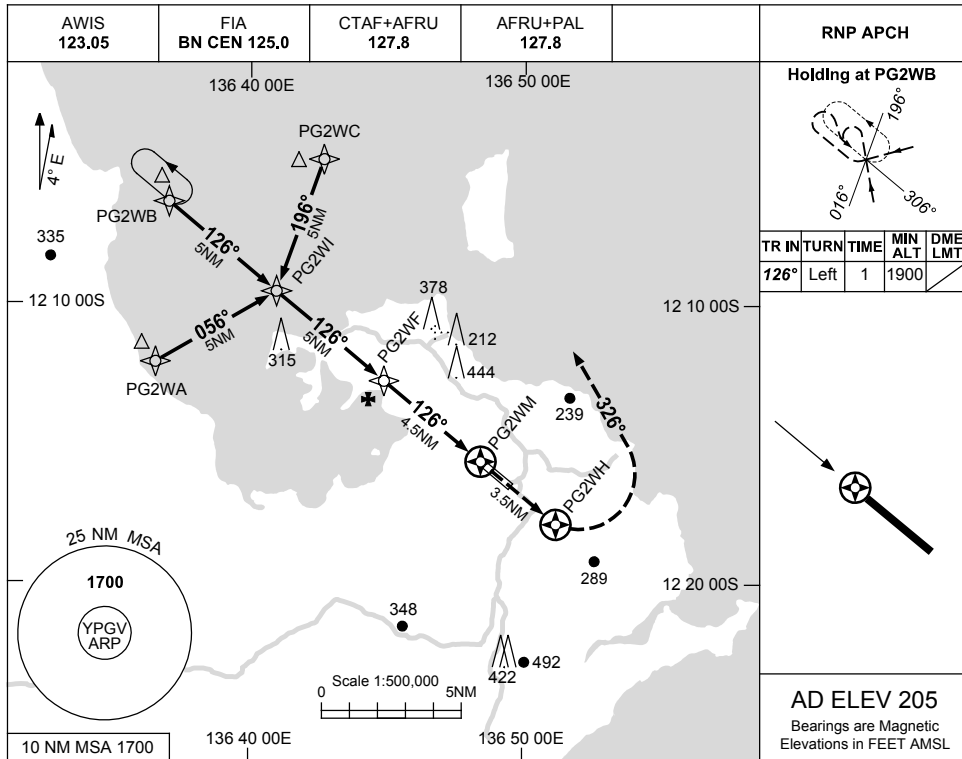
Changes: NOTE.

PGVAD01-176

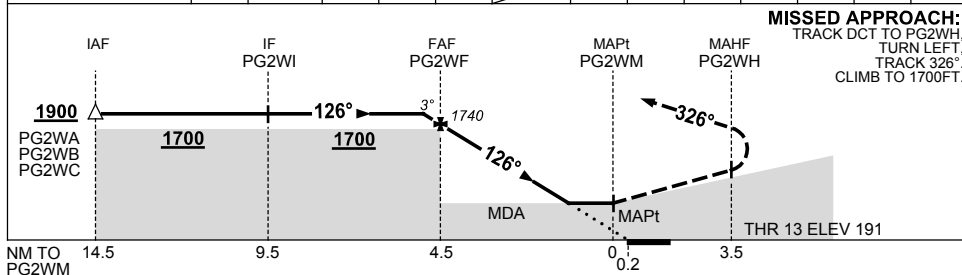
USE QNH

RNP RWY 13
GOVE, NT (YPGV)

15 JUN 2023



NM TO NEXT WPT	0.5	PG2WF	3	2	1.3	PG2WM							
ALT (3° APCH PATH)	1900	1740	1260	940	730								



NOTES

CATEGORY	A	B	C	D
LNAV	730 (539-3.1)			
CIRCLING	840 (635-2.4)	940 (735-4.0)	1010 (805-5.0)	
ALTERNATE	(1135-4.4)	(1235-6.0)	(1305-7.0)	

1. MAX IAS:
INITIAL : 240KT.

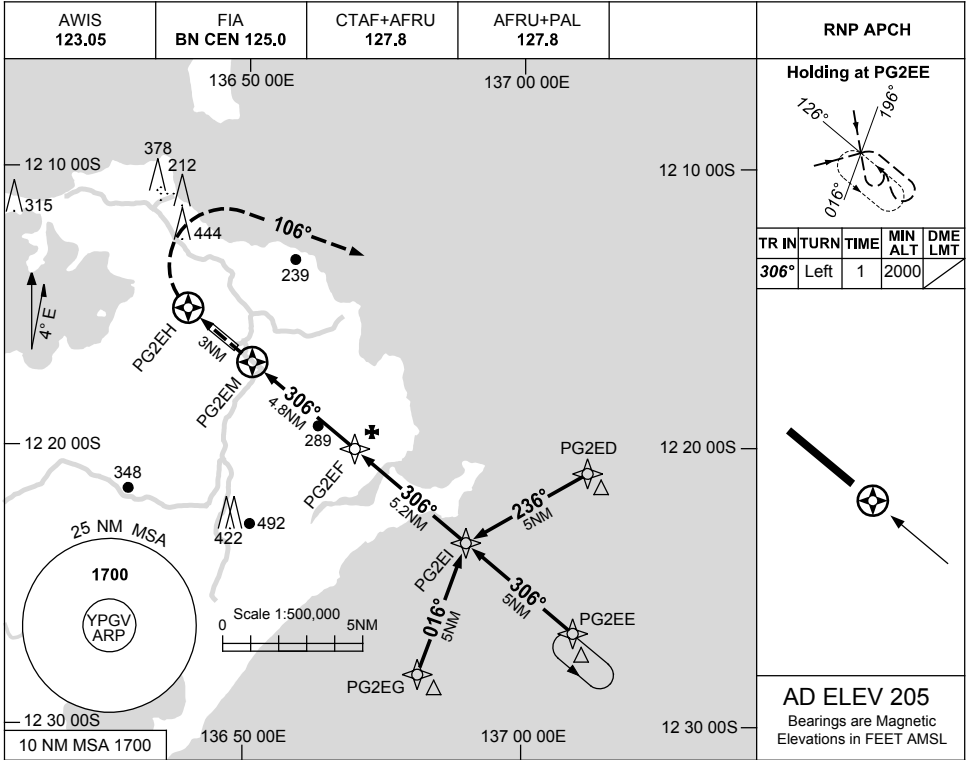
Changes: THR ELEV, WPT NAMING CONVENTION, Editorial.

PGVGN01-175

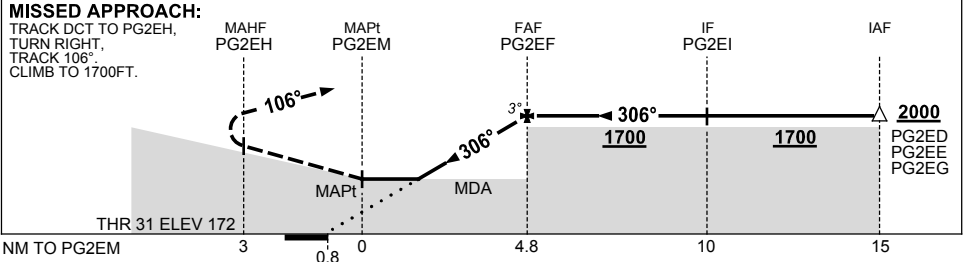
USE QNH

RNP RWY 31
GOVE, NT (YPGV)

15 JUN 2023



NM TO NEXT WPT	PG2EM	1.1	2	3	4	PG2EF				
ALT (3° APCH PATH)		800	1100	1420	1740	2000				



NOTES

CATEGORY	A	B	C	D
LNAV	800 (628-3.6)			
CIRCLING	840 (635-2.4)	940 (735-4.0)	1010 (805-5.0)	
ALTERNATE	(1135-4.4)	(1235-6.0)	(1305-7.0)	

1. MAX IAS:
INITIAL : 240KT.

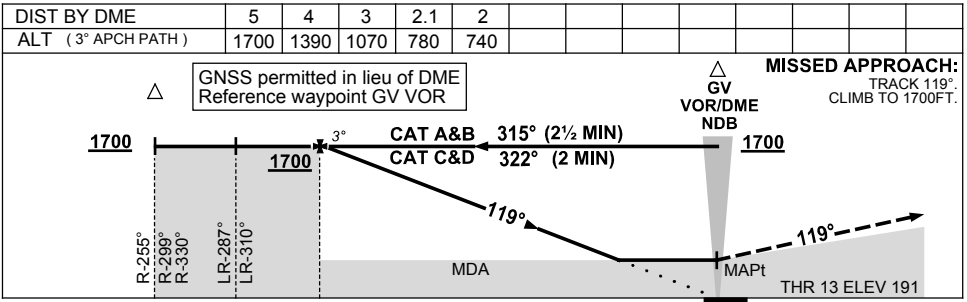
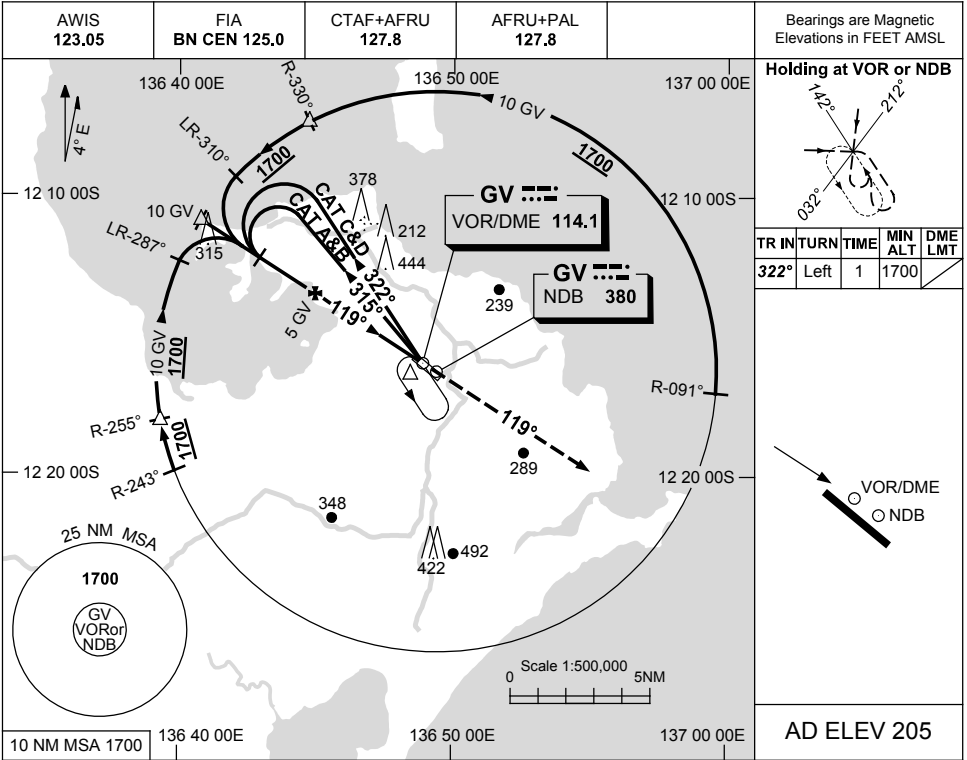
Changes: THR ELEV, WPT NAMING CONVENTION, Editorial.

PGVGN02-175

USE QNH

NDB or VOR RWY 13
GOVE, NT (YPGV)

15 JUN 2023



CATEGORY	A	B	C	D
S-I VOR or NDB		780 (589-3.3)		
S-I WITH DME		740 (549-3.1)		
CIRCLING	840 (635-2.4)		940 (735-4.0)	1010 (805-5.0)
ALTERNATE	(1135-4.4)		(1235-6.0)	(1305-7.0)

NOTES
1. MAX IAS:
INITIAL : 210KT.

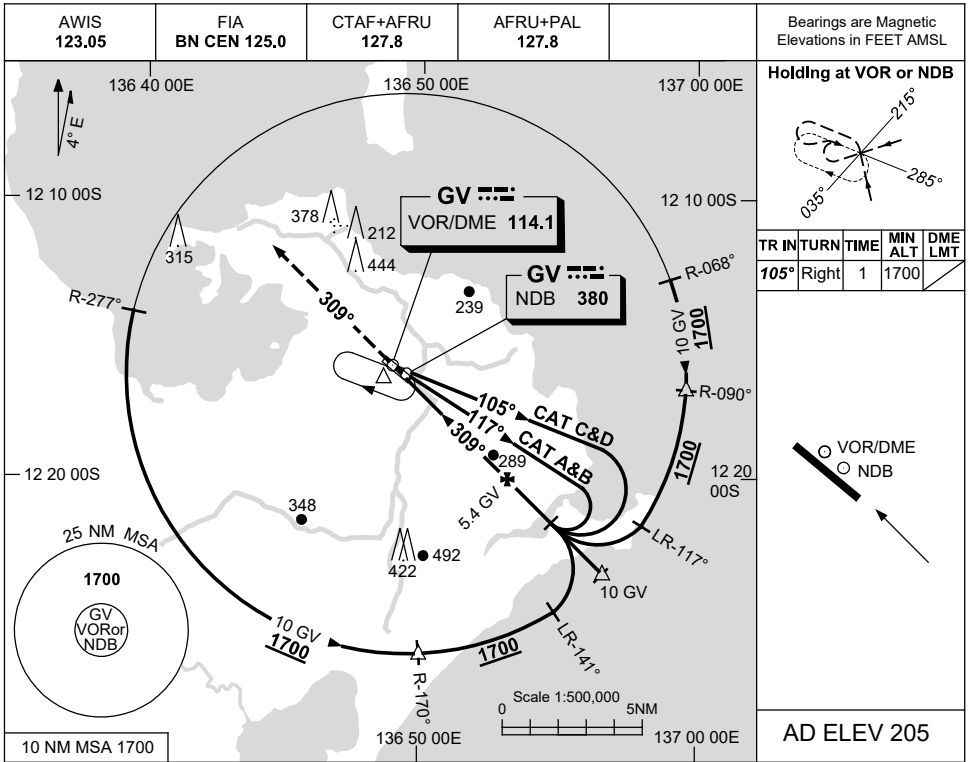
Changes: THR ELEV, Editorial.

PGVNB01-175

USE QNH

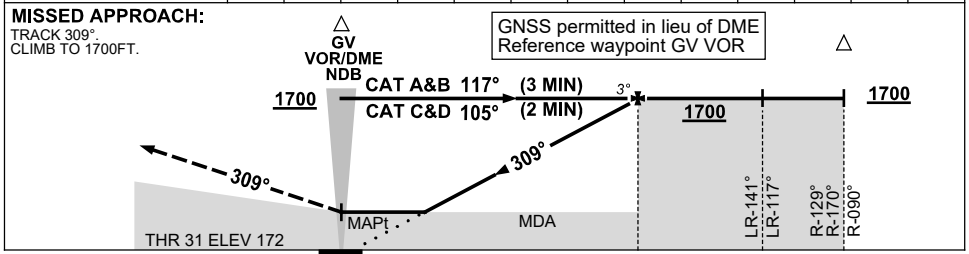
NDB or VOR RWY 31
GOVE, NT (YPGV)

15 JUN 2023



AD ELEV 205

DIST BY DME	2.6	2.8	3	4	5	5.4							
ALT (3° APCH PATH)	800	840	920	1230	1550	1700							



NM BY DME	0	5.4	10	10
-----------	---	-----	----	----

NOTES

CATEGORY	A	B	C	D
S-I VOR or NDB		840 (668-3.8)		
S-I WITH DME		800 (628-3.6)		
CIRCLING	840 (635-2.4)		940 (735-4.0)	1010 (805-5.0)
ALTERNATE	(1135-4.4)		(1235-6.0)	(1305-7.0)

1. MAX IAS:
INITIAL : 210KT.

Changes: THR ELEV, Editorial.

PGVNB02-175