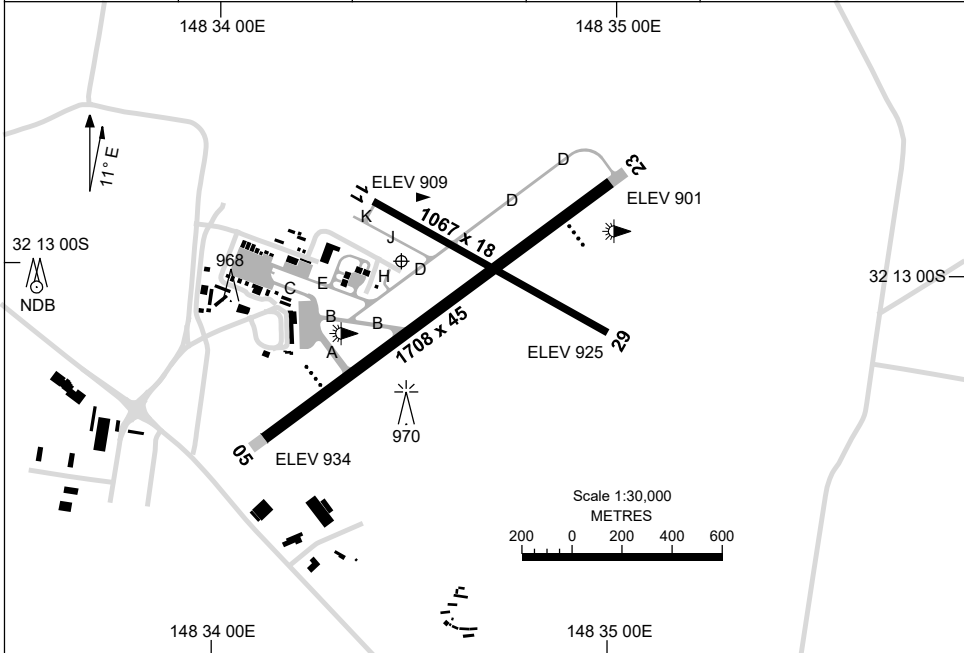


21 MAR 2024

AD ELEV 935
32 13 00S 148 34 29E

AERODROME CHART
DUBBO, NSW (YSDU)

AWIS 122.975	FIA ML CEN 123.9	CTAF+AFRU 134.0	PAL 121.3	Bearings are Magnetic Elevations in FEET AMSL
-----------------	---------------------	--------------------	--------------	--



RWY	AERODROME LIGHTING	
		TAXIWAY : BLUE EDGE , TWY A&B RL : PAL 121.3 , SDBY (9 SEC)
05 ⁰⁴³	PAPI 3.0° 46FT LIRL	
²²³ 23	PAPI 3.0° 46FT LIRL	
11 ¹⁰⁸	NIL	
²⁸⁸ 29	NIL	

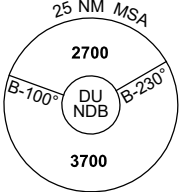
NOTES

1. AWIS REQUIRES 1 SEC PULSE TO ACTIVATE.

GNSS ARRIVAL PROCEDURES DUBBO, NSW (YSDU)

24 MAR 2022

AWIS 122.975	FIA ML CEN 123.9	CTAF+AFRU 134.0	PAL 121.3	Bearings are Magnetic Elevations in FEET AMSL
-----------------	---------------------	--------------------	--------------	--



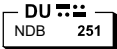
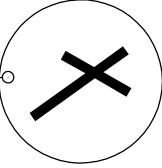
25 NM MSA

2700

B-100° DU NDB B-230°

3700

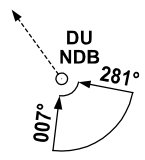
REFERENCE WAYPOINT DU NDB

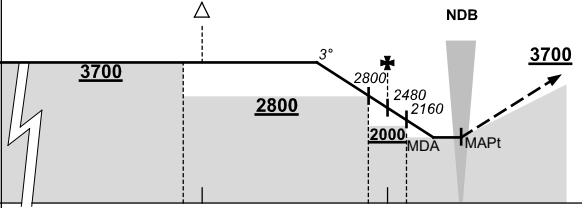



10 NM MSA 3000

AD ELEV 935

SECTOR A





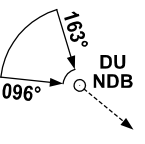
NDB

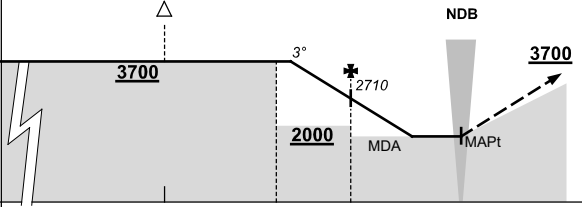
MISSED APPROACH:

CLIMB ON TRACK TO 3700FT.

NM TO DU NDB	25	15	14	5	4	3	2.5	2.1	2	1.6				
CIRCLING MINIMA	A,B: 1730-2.4		C: 1880-4.0		D: 1990-5.0									
NM TO DU NDB	7.8	7	6	5	4	3	2.5	2.1	2	1.6				
ALT (3° APCH PATH)	3700	3440	3120	2800	2480	2160	1990	1880	1850	1730				

SECTOR B





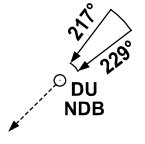
NDB

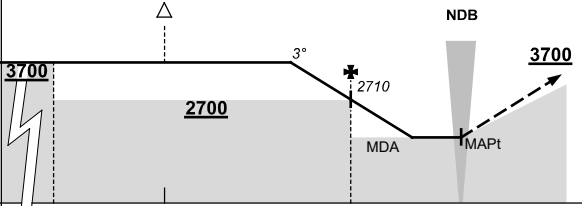
MISSED APPROACH:

CLIMB ON TRACK TO 3700FT.

NM TO DU NDB	25	16	10	6	0									
CIRCLING MINIMA	A,B: 1730-2.4		C: 1880-4.0		D: 1990-5.0									
NM TO DU NDB	9.1	8	7	6	5	4	3.7	3.4	3	2.9				
ALT (3° APCH PATH)	3700	3350	3030	2710	2390	2080	1990	1880	1760	1730				

SECTOR C





NDB

MISSED APPROACH:

CLIMB ON TRACK TO 3700FT.

NM TO DU NDB	25	22	16	6	0									
CIRCLING MINIMA	A,B: 1730-2.4		C: 1880-4.0		D: 1990-5.0									
NM TO DU NDB	9.1	8	7	6	5	4	3.7	3.4	3	2.9				
ALT (3° APCH PATH)	3700	3350	3030	2710	2390	2080	1990	1880	1760	1730				

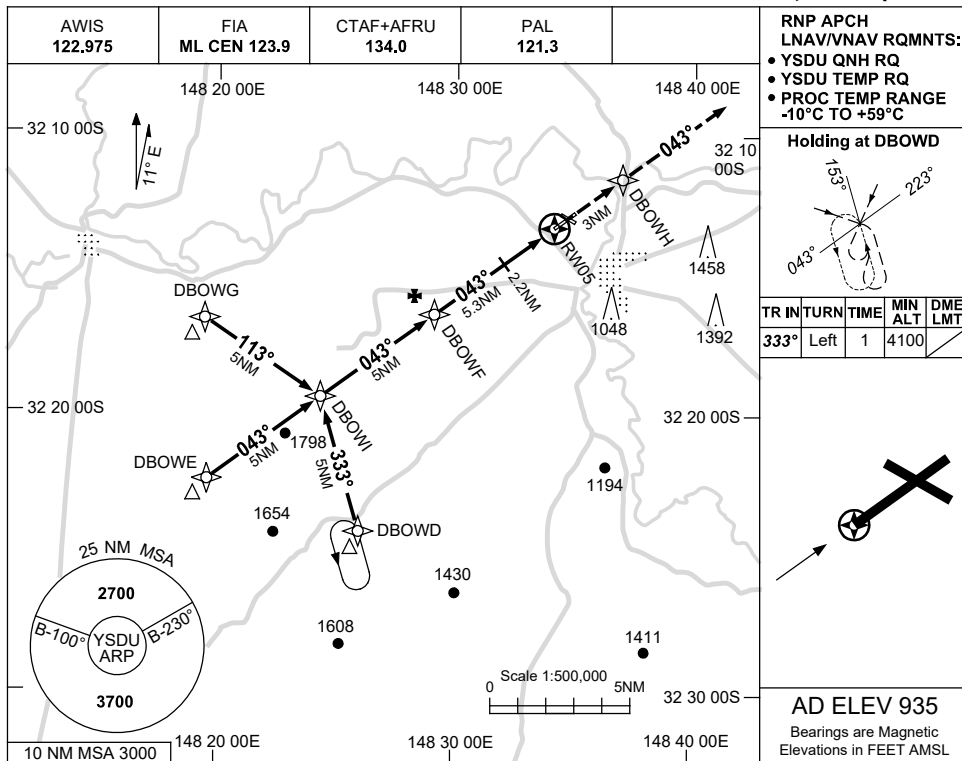
Changes: CAT D CIRCLING MINIMA, DIST/ALT TABLE.

SDUDG01-170

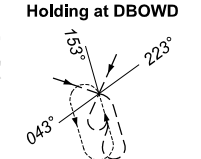
USE QNH

RNP RWY 05
DUBBO, NSW (YSDU)

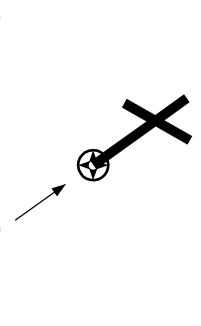
15 JUN 2023



RNP APCH
 LNAV/VNAV RQMNTS:
 • YSDU QNH RQ
 • YSDU TEMP RQ
 • PROC TEMP RANGE
 -10°C TO +59°C

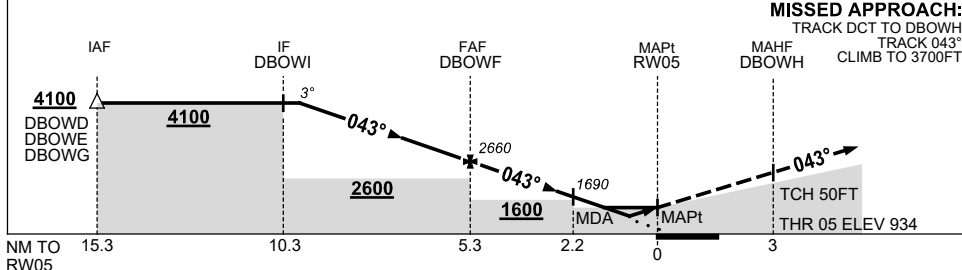


TR IN	TURN	TIME	MIN	DME
			ALT	LMT
333°	Left	1	4100	



AD ELEV 935
 Bearings are Magnetic
 Elevations in FEET AMSL

NM TO NEXT WPT	4.5	4	3	2	1	DBOWF	4	3	2.2	1.7	1.2	RW05
ALT (3° APCH PATH)	4100	3940	3620	3300	2980	2660	2260	1940	1690	1530	1350	



MISSED APPROACH:
 TRACK DCT TO DBOWH,
 TRACK 043°,
 CLIMB TO 3700FT.

NOTES

CATEGORY	A	B	C	D
LNAV/VNAV		1350 (416-2.3)		
LNAV		1530 (595-3.4)		
CIRCLING	1730 (795-2.4)	1880 (945-4.0)	1990 (1055-5.0)	
ALTERNATE	(1295-4.4)		(1445-6.0)	(1555-7.0)

1. MAX IAS:
 INITIAL : 210KT.

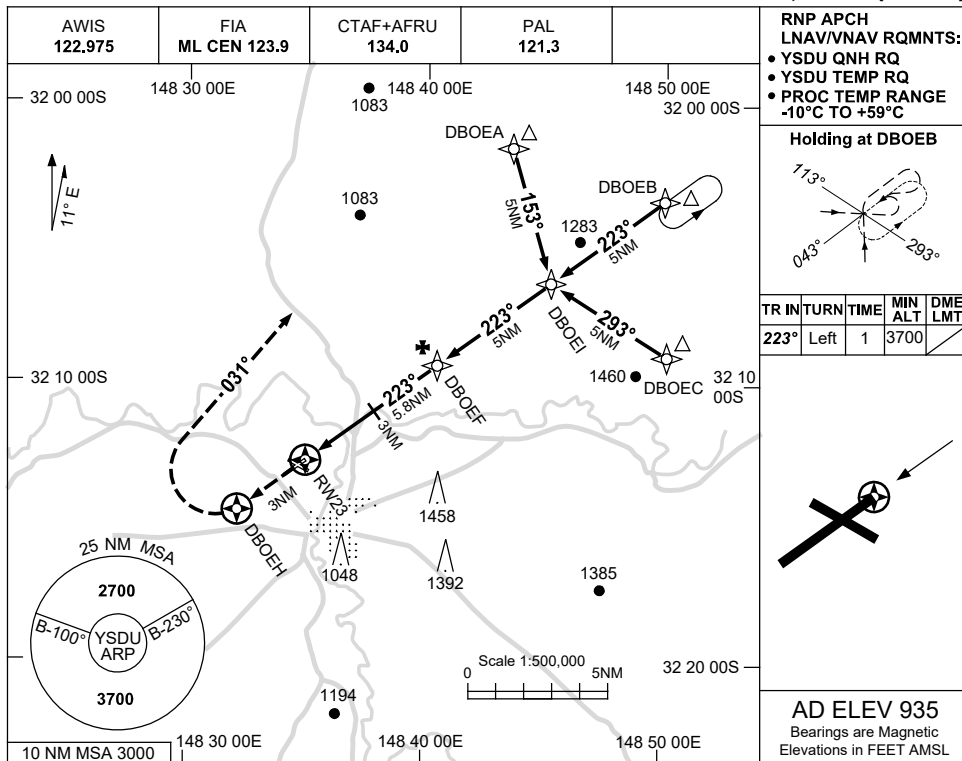
Changes: CHART TITLE, PBN SPECIFICATION BOX, Editorial.

SDUGN01-175

USE QNH

RNP RWY 23
DUBBO, NSW (YSDU)

15 JUN 2023



RNP APCH LNAV/VNAV RQMNTS:

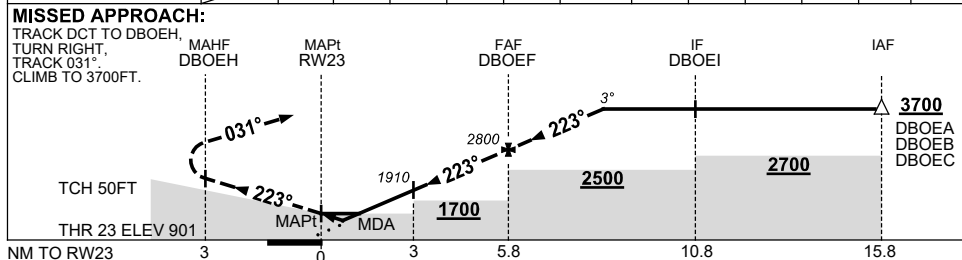
- YSDU QNH RQ
- YSDU TEMP RQ
- PROC TEMP RANGE -10°C TO +59°C

Holding at DBOEB

TR IN	TURN	TIME	MIN ALT	DME LMT
223°	Left	1	3700	

AD ELEV 935
 Bearings are Magnetic
 Elevations in FEET AMSL

NM TO NEXT WPT	RW23	1	1.7	2	3	4	DBOEF	1	2	2.8		
ALT (3° APCH PATH)		1280	1500	1590	1910	2230	2800	3110	3430	3700		



NOTES

1. MAX IAS:
 INITIAL : 210KT.

CATEGORY	A	B	C	D
LNAV/VNAV		1280 (379-2.1)		
LNAV		1500 (599-3.4)		
CIRCLING	1730 (795-2.4)		1880 (945-4.0)	1990 (1055-5.0)
ALTERNATE	(1295-4.4)		(1445-6.0)	(1555-7.0)

Changes: CHART TITLE, PBN SPECIFICATION BOX, Editorial.

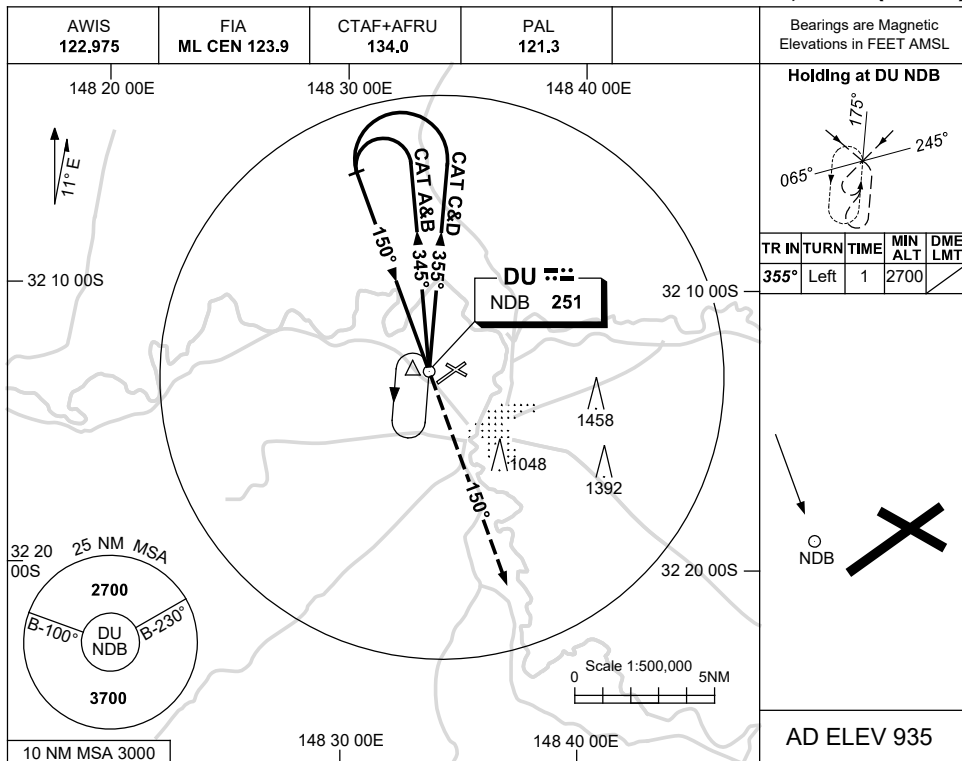
SDUGN02-175

USE QNH

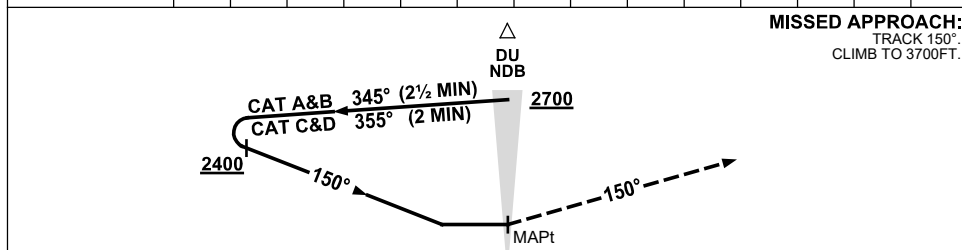
NDB-A

DUBBO, NSW (YSDU)

24 MAR 2022



DME DIST	NOT APPLICABLE									
ALT										



NOTES

CATEGORY	A	B	C	D
CIRCLING	1730 (795-2.4)	1880 (945-4.0)	1990 (1055-5.0)	
ALTERNATE	(1295-4.4)	(1445-6.0)	(1555-7.0)	

- MAX IAS :
HOLDING: 210KT.
PROCEDURE: 210KT.

Changes: MINIMA.

SDUNB01-170