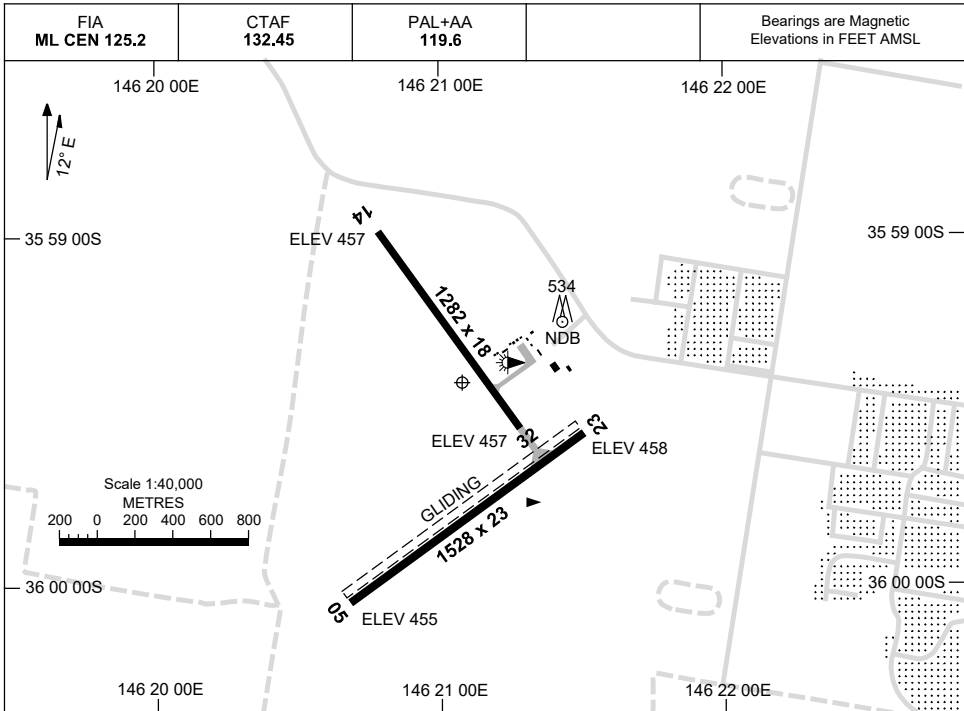


8 SEP 2022

AD ELEV 469  
35 59 25S 146 21 05E

AERODROME CHART  
**COROWA, NSW (YCOR)**



RWY	AERODROME LIGHTING	
		TAXIWAY : BLUE EDGE
<b>05</b> <sup>043</sup>	LIRL	
<sup>223</sup> <b>23</b>	LIRL	
<b>14</b> <sup>133</sup>	NIL	
<sup>373</sup> <b>32</b>	NIL	

**NOTES**

1. FIA FREQ 125.2 AVBL IN CIRCUIT AREA.

Changes: PAL+AA, NOTES.

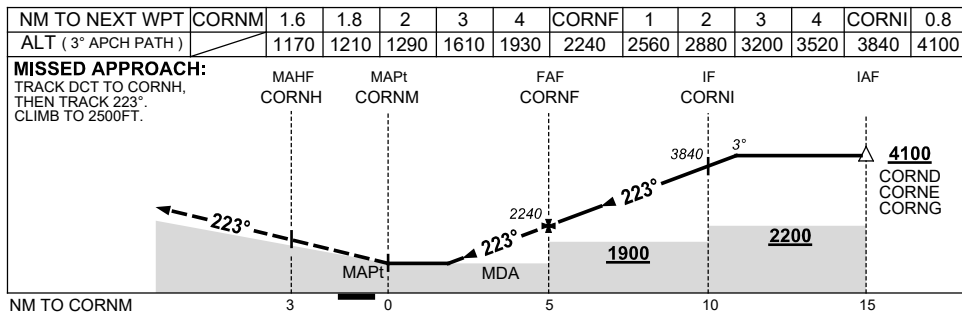
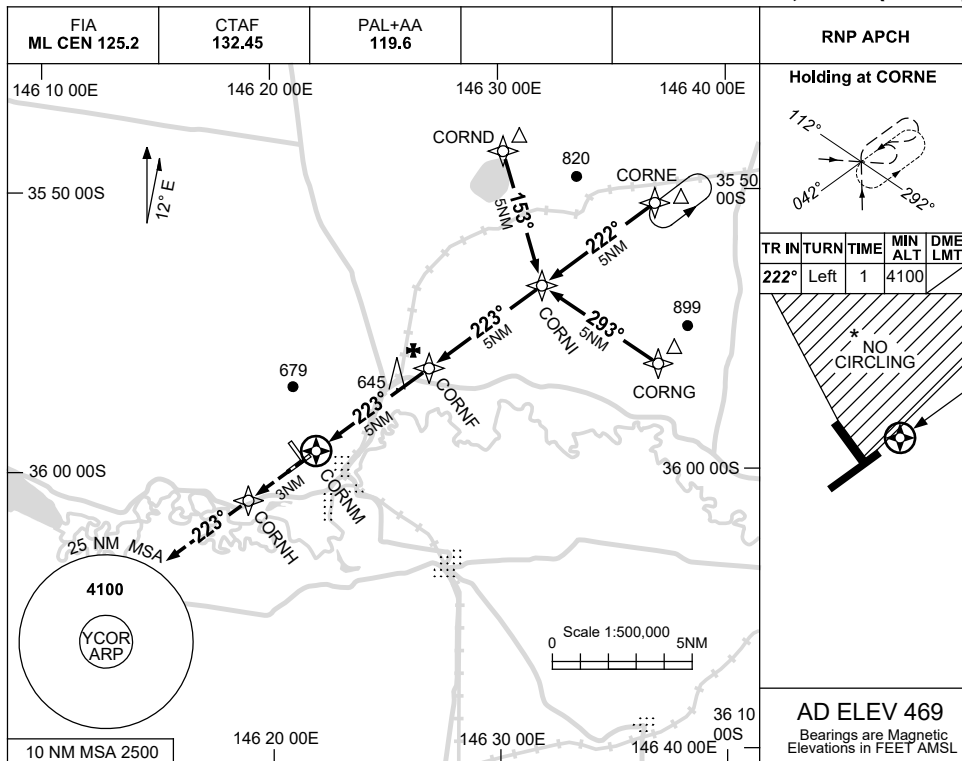
CORAD01-172

USE QNH

RNP E

23 MAR 2023

COROWA, NSW (YCOR)



**NOTES**

CATEGORY	A	B	C	D
CIRCLING*	1170 (701-2.4)		1210 (741-4.0)	
ALTERNATE	(1201-4.4)		(1241-6.0)	

**NOT APPLICABLE**

- MAX IAS: INITIAL : 210KT.
- \* NO CIRCLING IN SECTOR NE OF RWYS 05/23 AND 14/32.
- CAUTION:** YYWG 15NM W.

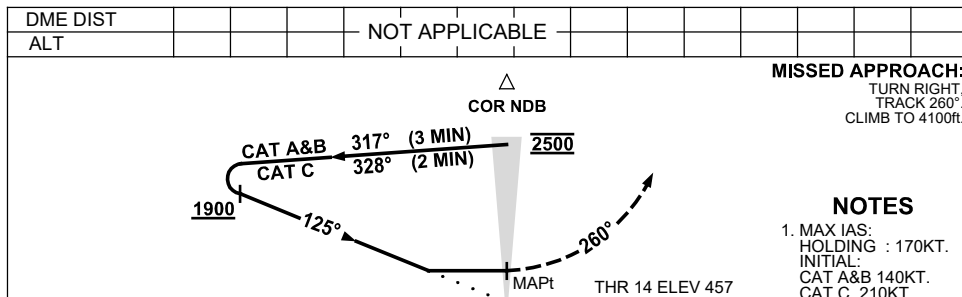
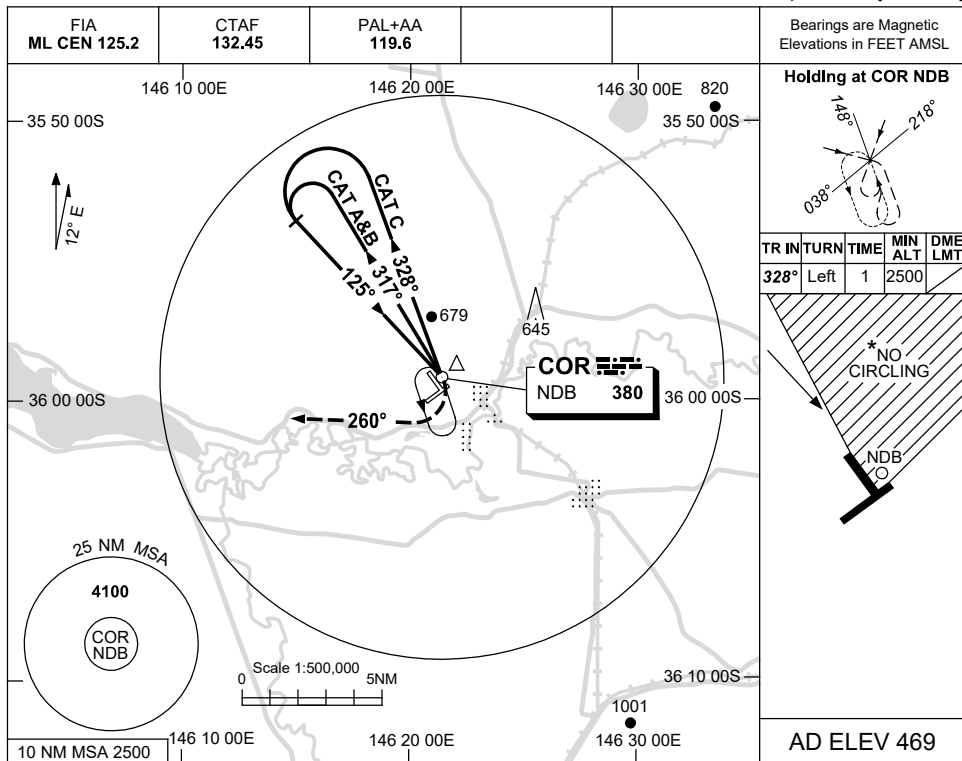
Changes: CHART TITLE, PBN SPECIFICATION BOX.

CORGN02-174

USE QNH

NDB RWY 14  
COROWA, NSW (YCOR)

21 MAR 2024



CATEGORY	A	B	C	D
S-I NDB	1170 (713-4.1)			NOT APPLICABLE
CIRCLING *	1170 (701-2.4)		1210 (741-4.0)	
ALTERNATE	(1201-4.4)		(1241-6.0)	

Changes: NOTE 4, Editorial.

CORNB01-178