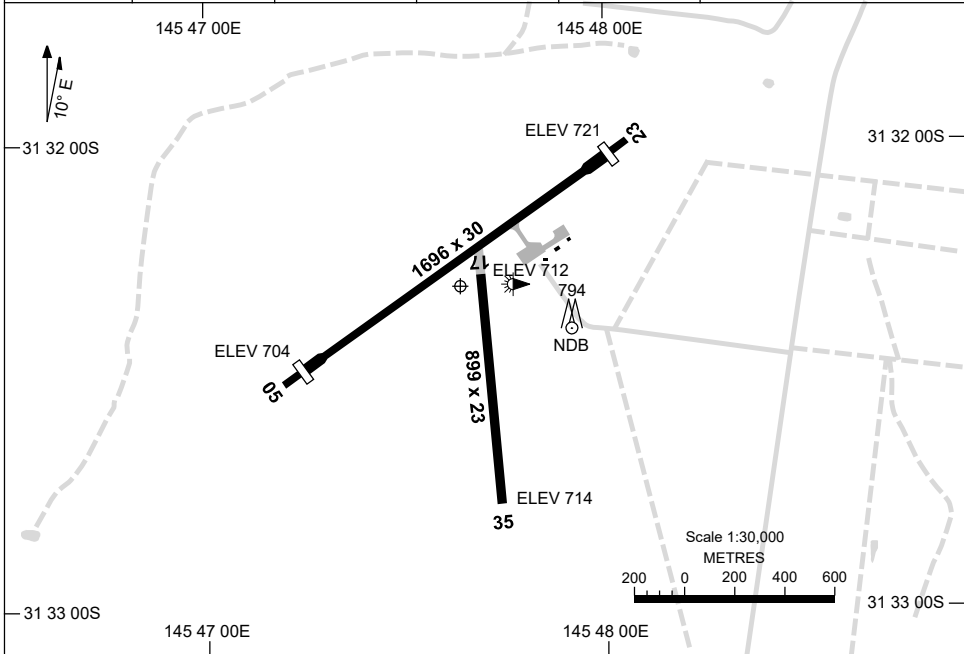


2 DEC 2021

AD ELEV 724
31 32 18S 145 47 38E

AERODROME CHART
COBAR, NSW (YCBA)

AWIS 134.35	FIA ML CEN 124.9	CTAF+AFRU 126.7	AFRU+PAL 126.7		Bearings are Magnetic Elevations in FEET AMSL
----------------	---------------------	--------------------	-------------------	--	--



AERODROME LIGHTING	
RWY	TAXIWAY : BLUE EDGE RL : AFRU+PAL 126.7, EMERG SDBY
05 ⁰⁴⁵	LIRL
²²⁵ 23	LIRL
17 ¹⁶⁵	NIL
³⁴⁵ 35	NIL

NOTES

1. AWIS REQUIRES 1 SEC PULSE TO ACTIVATE.

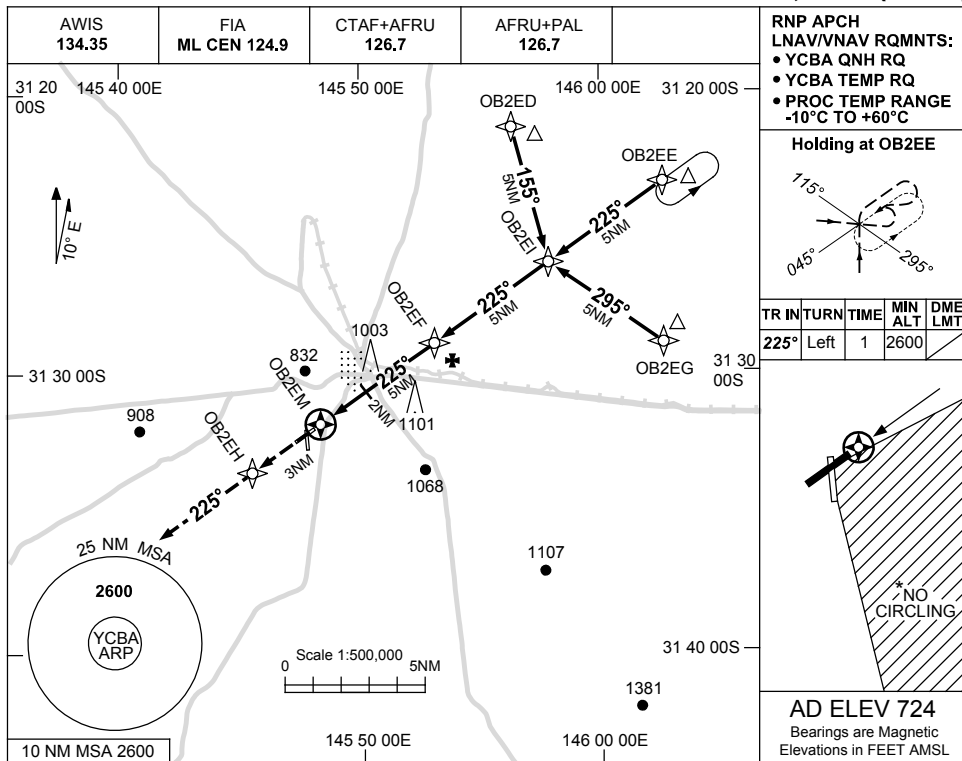
Changes: NOTE 1.

CBAAD01-169

USE QNH

RNP RWY 23
COBAR, NSW (YCBA)

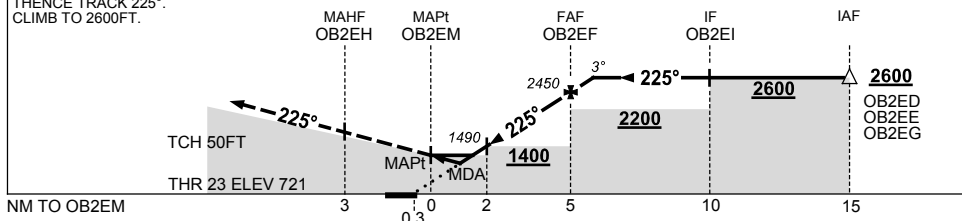
15 JUN 2023



NM TO NEXT WPT	OB2EM	0.7	1	1.5	2	3	4	OB2EF	0.5			
ALT (3° APCH PATH)		1080	1180	1340	1490	1810	2130	2450	2600			

MISSED APPROACH:

TRACK DCT TO OB2EH,
 THENCE TRACK 225°.
 CLIMB TO 2600FT.



NOTES

CATEGORY	A	B	C	D
LNAV/VNAV		1080 (359-2.0)		NOT APPLICABLE
LNAV		1340 (616-3.5)		
CIRCLING *	1390 (666-2.4)		1550 (826-4.0)	
ALTERNATE	(1166-4.4)		(1326-6.0)	

1. MAX IAS:
INITIAL : 210KT.
- * 2. NO CIRCLING
SOUTH-EAST OF
RWY 23 & RWY 35.

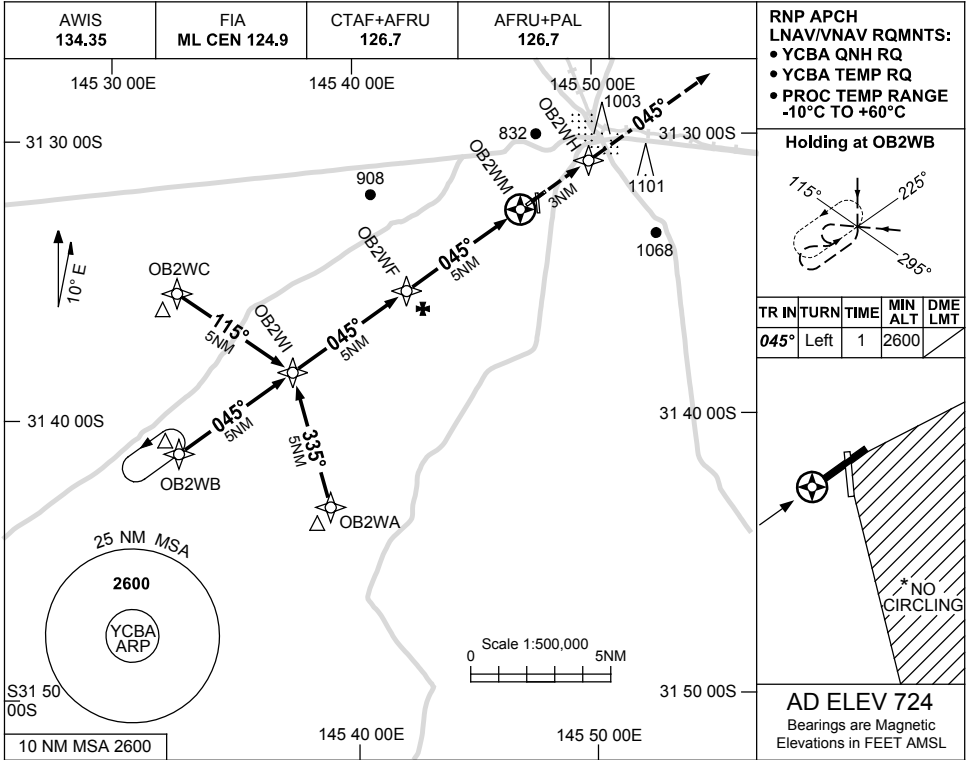
Changes: LNAV/VNAV MINIMA, SDF, NO CIRCLING AREA, WPT NAMING CONVENTION, Editorial.

CBAGN01-175

USE QNH

RNP RWY 05
COBAR, NSW (YCBA)

15 JUN 2023

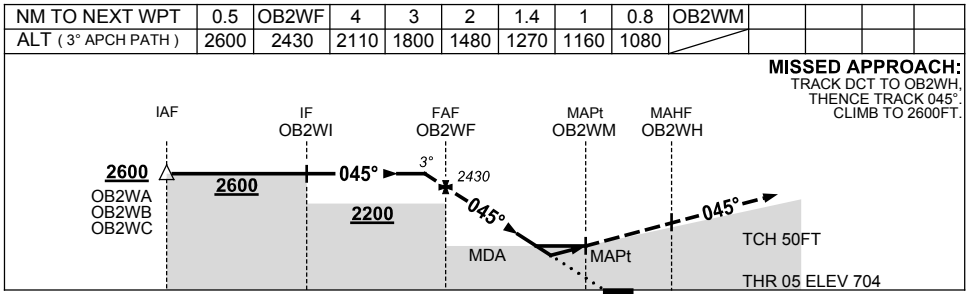


RNP APCH
 LNAV/VNAV RQMNTS:
 • YCBA QNH RQ
 • YCBA TEMP RQ
 • PROC TEMP RANGE
 -10°C TO +60°C

Holding at OB2WB

TR	IN	TURN	TIME	MIN ALT	DME LMT
045°	Left	1	2600		

AD ELEV 724
 Bearings are Magnetic
 Elevations in FEET AMSL



NOTES

CATEGORY	A	B	C	D
LNAV/VNAV		1080 (376-2.1)		NOT APPLICABLE
LNAV		1270 (566-3.2)		
CIRCLING *	1390 (666-2.4)		1550 (826-4.0)	
ALTERNATE	(1166-4.4)		(1326-6.0)	

- MAX IAS:
INITIAL : 210KT.
- * NO CIRCLING SOUTH-EAST OF RWY 23 & RWY 35.

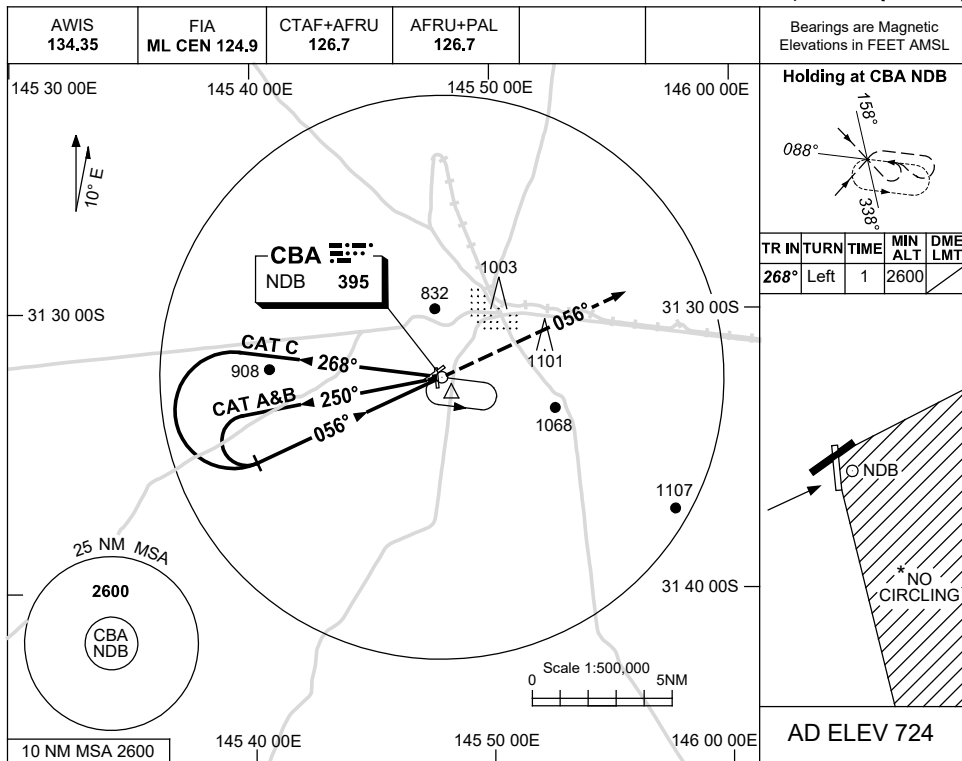
Changes: NO CIRCLING AREA, WPT NAMING CONVENTION, Editorial.

CBAGN02-175

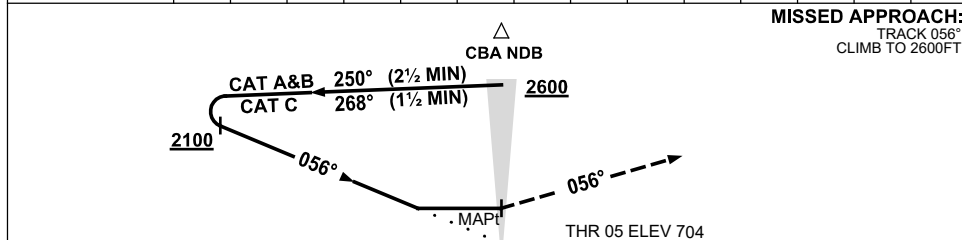
USE QNH

NDB RWY 05
COBAR, NSW (YCBA)

15 JUN 2023



DME DIST	NOT APPLICABLE				
ALT					



CATEGORY	A	B	C	D
S-I NDB	1320 (616-3.5)			NOT APPLICABLE
CIRCLING *	1390 (666-2.4)		1550 (826-4.0)	
ALTERNATE	(1166-4.4)		(1326-6.0)	

- NOTES**
- MAX IAS:
INITIAL : 210KT.
 - *2. NO CIRCLING SOUTH-EAST OF RWY 23 & RWY 35.

Changes: MAG TRACKS, NO CIRCLING AREA, Editorial.

CBANB01-175