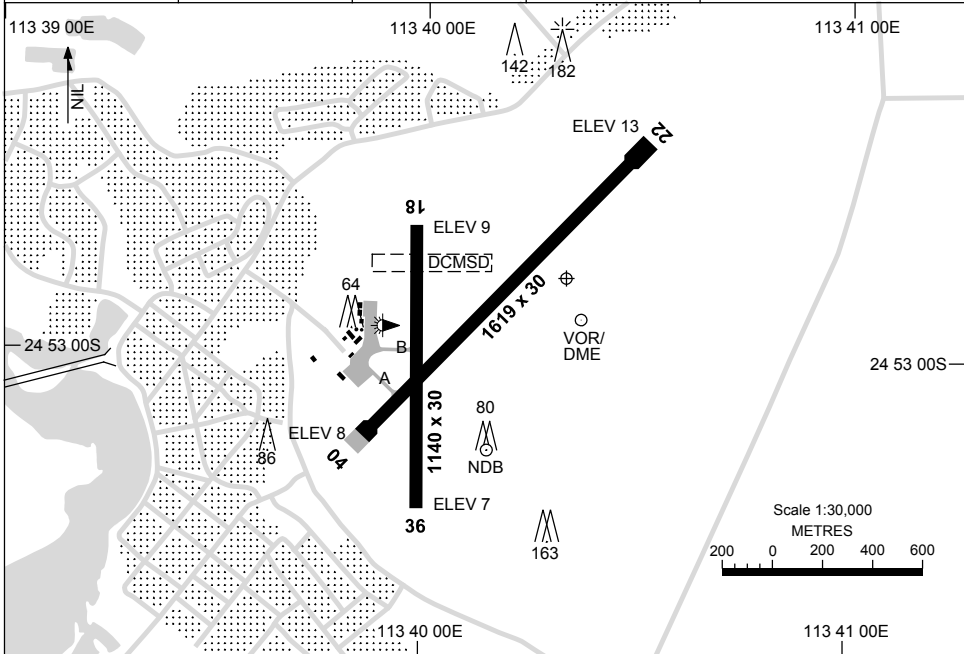


23 MAR 2023

AD ELEV 13
24 52 50S 113 40 20E

AERODROME CHART
CARNARVON, WA (YCAR)

AWIS 126.45	FIA ML CEN 122.1	CTAF+AFRU 126.7	AFRU+PAL 126.7	Bearings are Magnetic Elevations in FEET AMSL
----------------	---------------------	--------------------	-------------------	--



RWY		AERODROME LIGHTING
		TAXIWAY : BLUE EDGE RL : AFRU+PAL 126.7 , SDBY (10 SEC)
04	044	LIRL
224	22	LIRL
18	180	NIL
360	36	NIL

NOTES

Changes: RWY 04/22 IWI DCMSD, THR 04 ELEV, RWY 04/22 MAG BRG.

CARAD01-174

DME or GNSS ARRIVAL PROCEDURES CARNARVON, WA (YCAR)

17 JUN 2021

AWIS 126.45	FIA ML CEN 122.1	CTAF+AFRU 126.7	AFRU+PAL 126.7		Bearings are Magnetic Elevations in FEET AMSL
----------------	---------------------	--------------------	-------------------	--	--

25 NM MSA
1500
CAR VOR or NDB

**DME USING CAR DME
REFERENCE WAYPOINT CAR VOR**

2.5 NM
NO CIRCLING

10 NM MSA 1500

CAR VOR/DME 113.0

CAR NDB 323

* NO CIRCLING IN SECTOR EAST OF RWY 22 & RWY 36 BEYOND 2.5NM.

AD ELEV 13

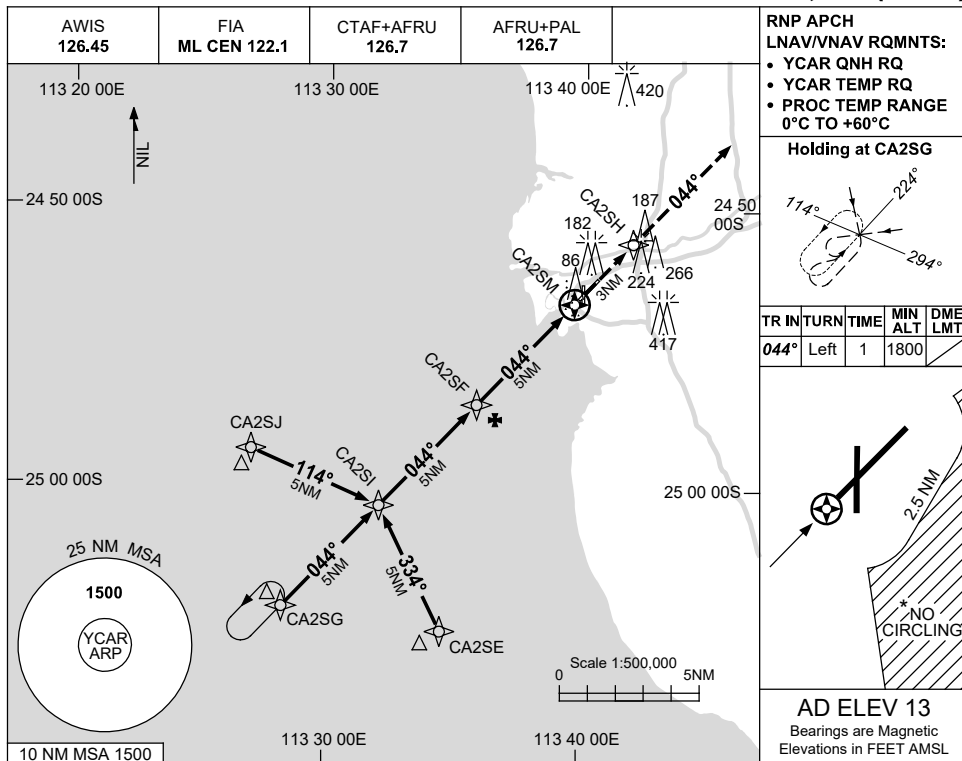
ALL ROUTES TO CAR VOR or NDB	△	<p style="text-align: right;">VOR or NDB</p>	MISSED APPROACH:
		<p>1500</p> <p>3°</p> <p>MDA</p> <p>MAPt</p> <p>1500</p>	<p>CLIMB ON TRACK TO 1500FT.</p>
NM TO CAR VOR	25 15	5 4 0	
CIRCLING MINIMA		A,B: 830-2.4 C: 830-4.0 D: 830-5.0	
NM TO CAR VOR	4 3 2	1.9	
ALT (3° APCH PATH)	1500 1180 860	830	

USE QNH

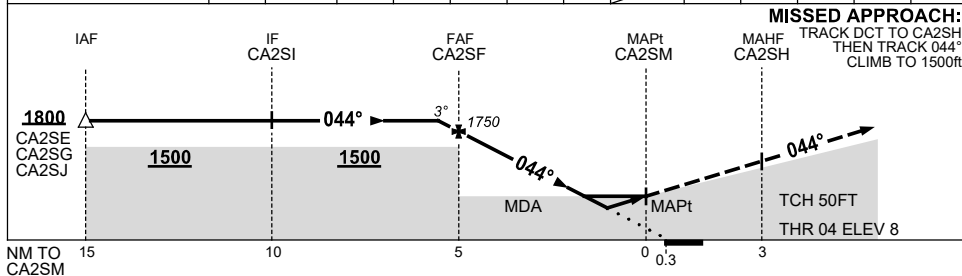
RNP RWY 04

21 MAR 2024

CARNARVON, WA (YCAR)



NM TO NEXT WPT	0.2	CA2SF	4	3	2	1.2	0.6	CA2SM					
ALT (3° APCH PATH)	1800	1750	1430	1110	790	550	350						



NOTES

CATEGORY	A	B	C	D
LNAV/VNAV		350 (342-1.9)		
LNAV		550 (537-3.0)		
CIRCLING *	670 (657-2.4)	760 (747-4.0)	810 (797-5.0)	
ALTERNATE	(1157-4.4)	(1247-6.0)	(1297-7.0)	

- 1. MAX IAS: INITIAL : 210KT.
- * 2. NO CIRCLING IN SECTOR EAST OF RWY 22 & RWY 36 BEYOND 2.5NM.

Changes: CIRCLING MINIMA, 420FT TOWER, 266FT TOWER.

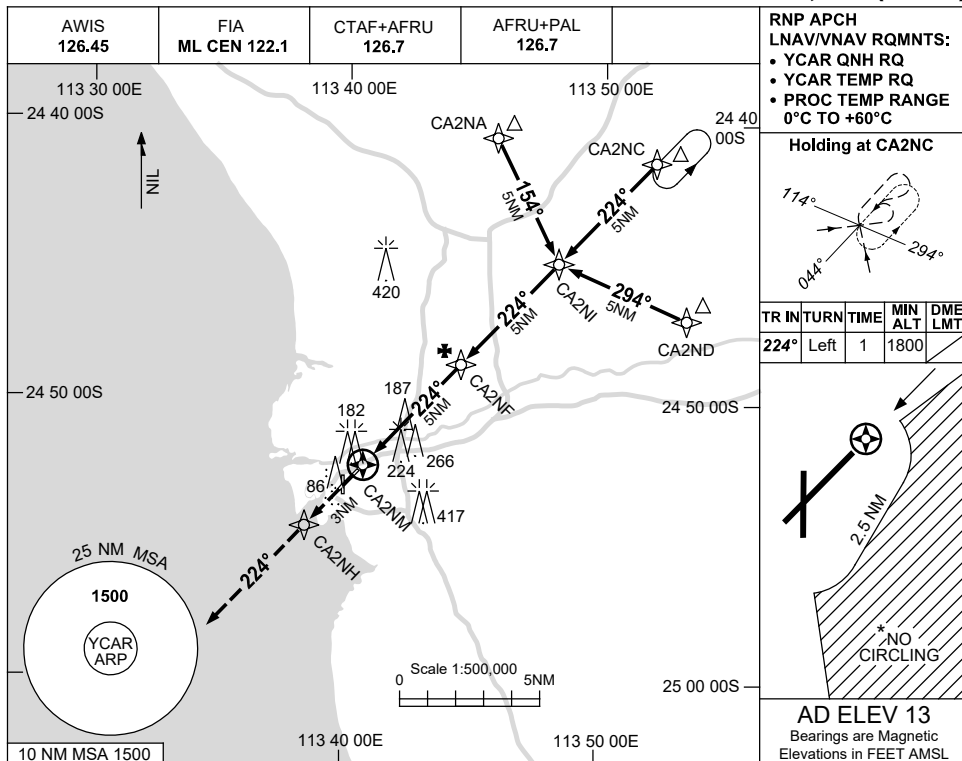
CARGN01-178

USE QNH

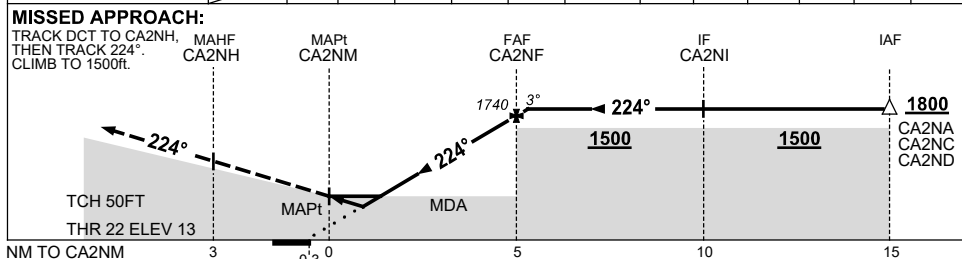
RNP RWY 22

21 MAR 2024

CARNARVON, WA (YCAR)



NM TO NEXT WPT	CA2NM	0.6	1.2	2	3	4	CA2NF	0.2			
ALT (3° APCH PATH)		350	540	790	1100	1420	1740	1800			



NOTES

CATEGORY	A	B	C	D
LNAV/VNAV	350 (337-1.9)			
LNAV	540 (527-3.0)			
CIRCLING *	670 (657-2.4)	760 (747-4.0)	810 (797-5.0)	
ALTERNATE	(1157-4.4)		(1297-7.0)	

1. MAX IAS:
INITIAL : 210KT.
- * 2. NO CIRCLING IN SECTOR EAST OF RWY 22 & RWY 36 BEYOND 2.5NM.

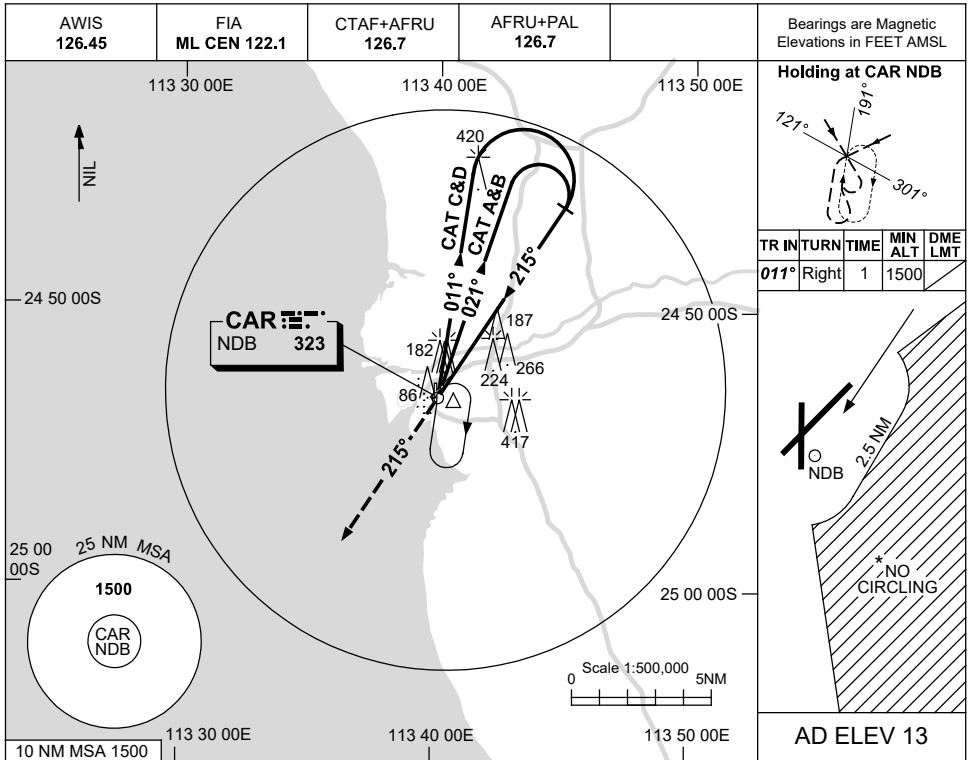
Changes: CIRCLING MINIMA, 420FT TOWER, 266FT TOWER.

CARGN02-178

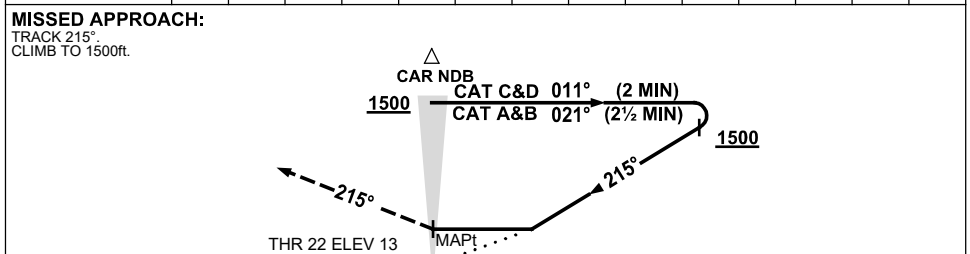
USE QNH

NDB RWY 22
CARNARVON, WA (YCAR)

21 MAR 2024



DME DIST	NOT APPLICABLE									
ALT										



NOTES

1. MAX IAS: INITIAL : 210KT.
- * 2. NO CIRCLING IN SECTOR EAST OF RWY 22 & RWY 36 BEYOND 2.5NM.

CATEGORY	A	B	C	D
S-I NDB	650 (637-3.6)			
CIRCLING *	670 (657-2.4)	760 (747-4.0)	810 (797-5.0)	
ALTERNATE	(1157-4.4)		(1297-7.0)	

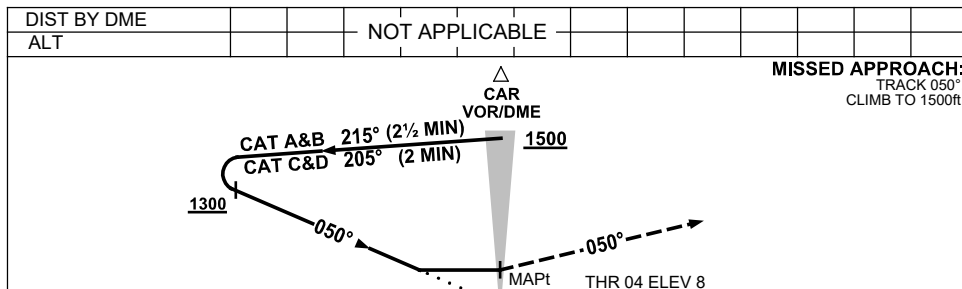
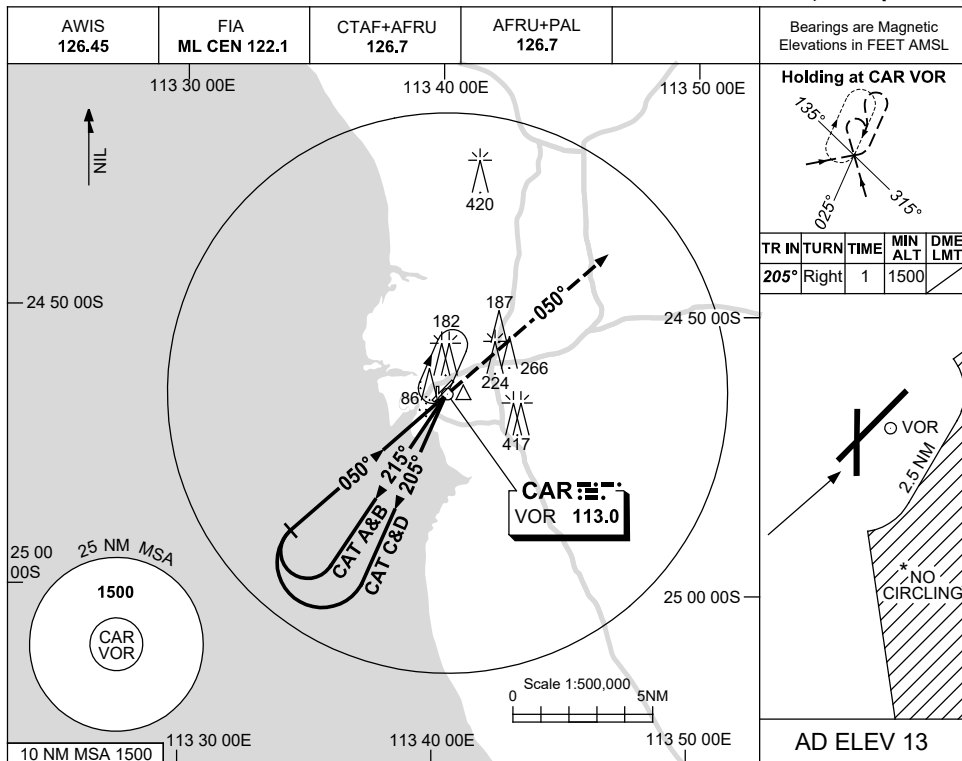
Changes: CIRCLING MINIMA, REVERSAL ALT, 420FT TOWER, 266FT TOWER.

CARNB01-178

USE QNH

VOR-Y RWY 04
CARNARVON, WA (YCAR)

21 MAR 2024



NM TO CAR DME

CATEGORY	A	B	C	D
S-I VOR	600 (587-3.3)			
CIRCLING *	670 (657-2.4)	760 (747-4.0)	810 (797-5.0)	
ALTERNATE	(1157-4.4)	(1247-6.0)	(1297-7.0)	

- NOTES**
- MAX IAS:
INITIAL : 210KT.
 - NO CIRCLING IN SECTOR EAST OF RWY 22 & RWY 36 BEYOND 2.5NM.

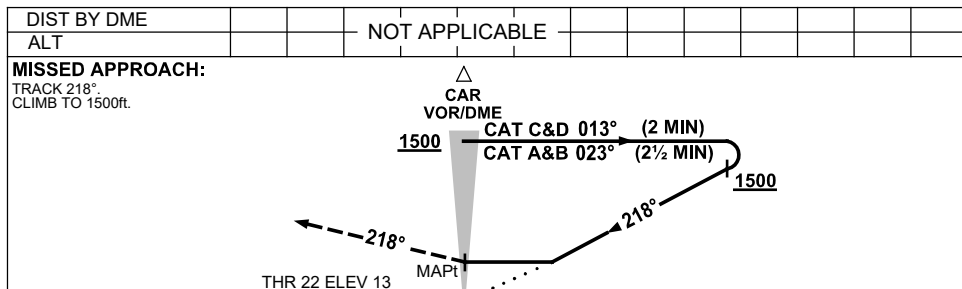
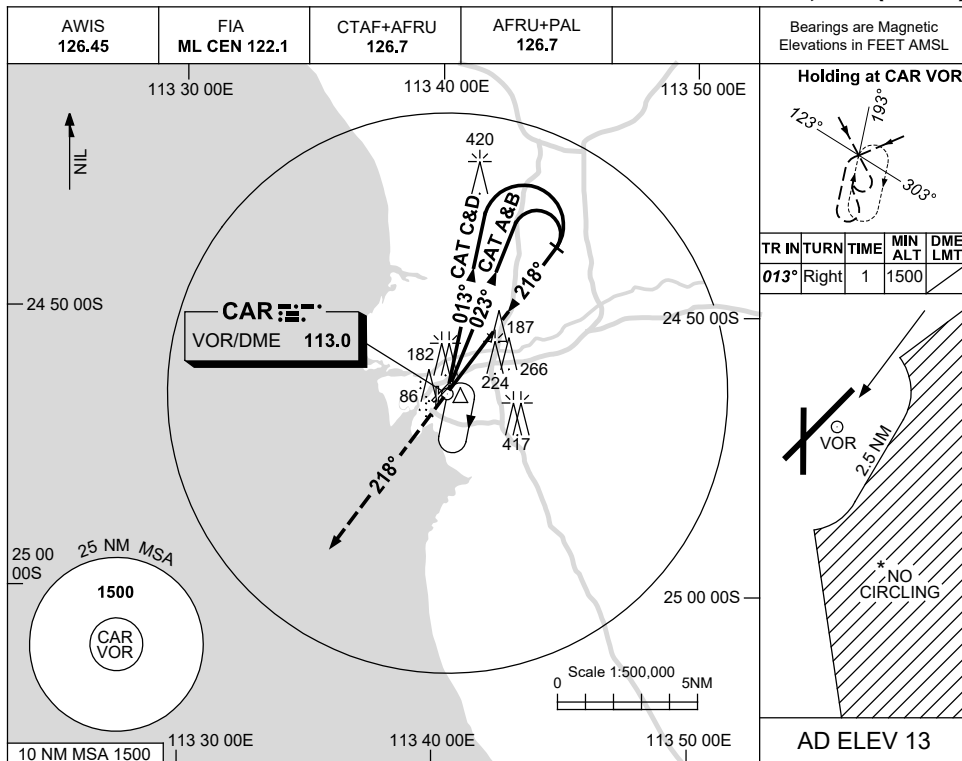
Changes: CIRCLING MINIMA, 420FT TOWER, 266FT TOWER.

CARVO01-178

USE QNH

VOR-Y RWY 22
CARNARVON, WA (YCAR)

21 MAR 2024



NOTES

1. MAX IAS: INITIAL : 210KT.
- * 2. NO CIRCLING IN SECTOR EAST OF RWY 22 & RWY 36 BEYOND 2.5NM.

CATEGORY	A	B	C	D
S-I VOR	630 (617-3.5)			
CIRCLING*	670 (657-2.4)	760 (747-4.0)	810 (797-5.0)	
ALTERNATE	(1157-4.4)	(1247-6.0)	(1297-7.0)	

Changes: CIRCLING MINIMA, REVERSAL ALT, 420FT TOWER, 266FT TOWER.

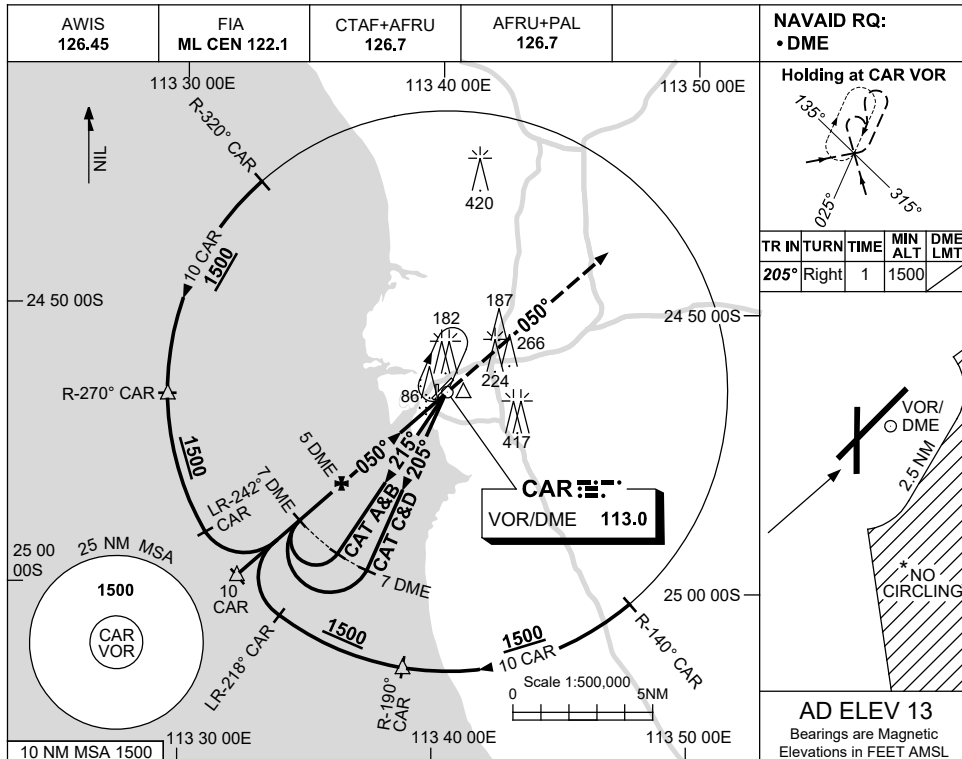
CARVO02-178

USE QNH

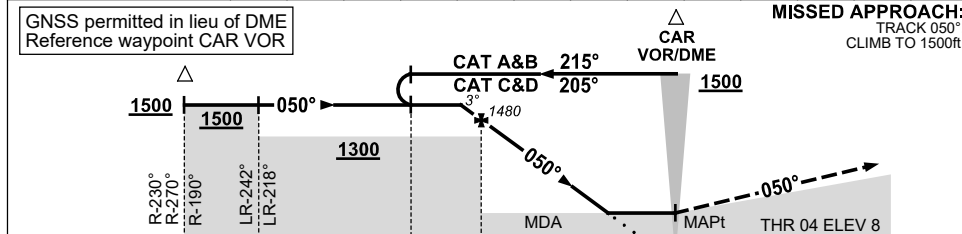
VOR-Z RWY 04

21 MAR 2024

CARNARVON, WA (YCAR)



DIST TO CAR DME	5.1	5	4	3	2.1								
ALT (3° APCH PATH)	1500	1480	1160	850	550								



CATEGORY	A	B	C	D
S-I VOR/DME	550 (537-3.0)			
CIRCLING *	670 (657-2.4)	760 (747-4.0)	810 (797-5.0)	
ALTERNATE	(1157-4.4)	(1247-6.0)	(1297-7.0)	

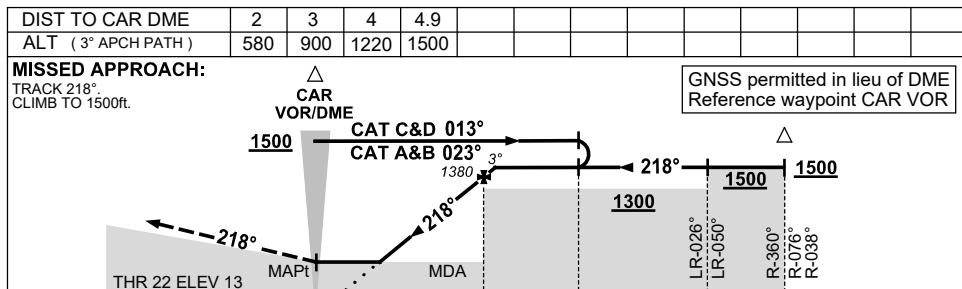
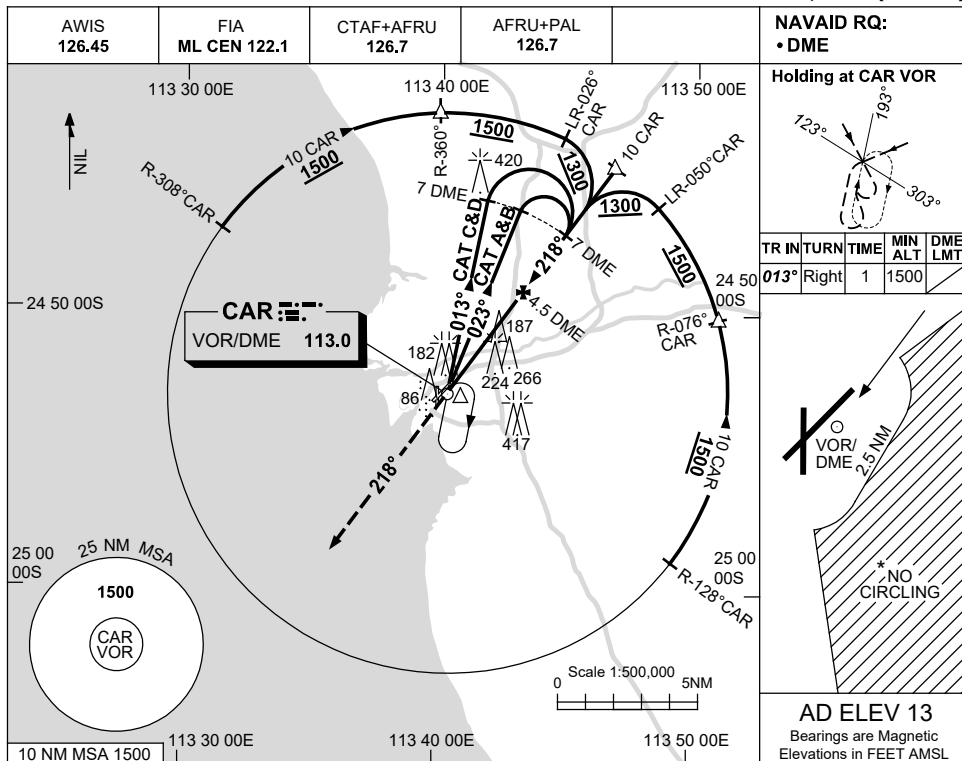
- NOTES**
- MAX IAS: INITIAL : 210KT.
 - NO CIRCLING IN SECTOR EAST OF RWY 22 & RWY 36 BEYOND 2.5NM.

Changes: CIRCLING MINIMA, 420FT TOWER, 266FT TOWER. CARVO03-178

USE QNH

VOR-Z RWY 22
CARNARVON, WA (YCAR)

21 MAR 2024



NOTES

CATEGORY	A	B	C	D
S-I VOR/DME	580 (567-3.2)			
CIRCLING*	670 (657-2.4)	760 (747-4.0)	810 (797-5.0)	
ALTERNATE	(1157-4.4)	(1247-6.0)	(1297-7.0)	

1. MAX IAS: INITIAL : 210KT.
- * 2. NO CIRCLING IN SECTOR EAST OF RWY 22 & RWY 36 BEYOND 2.5NM.

Changes: CIRCLING MINIMA, 420FT TOWER, 266FT TOWER.

CARV004-178