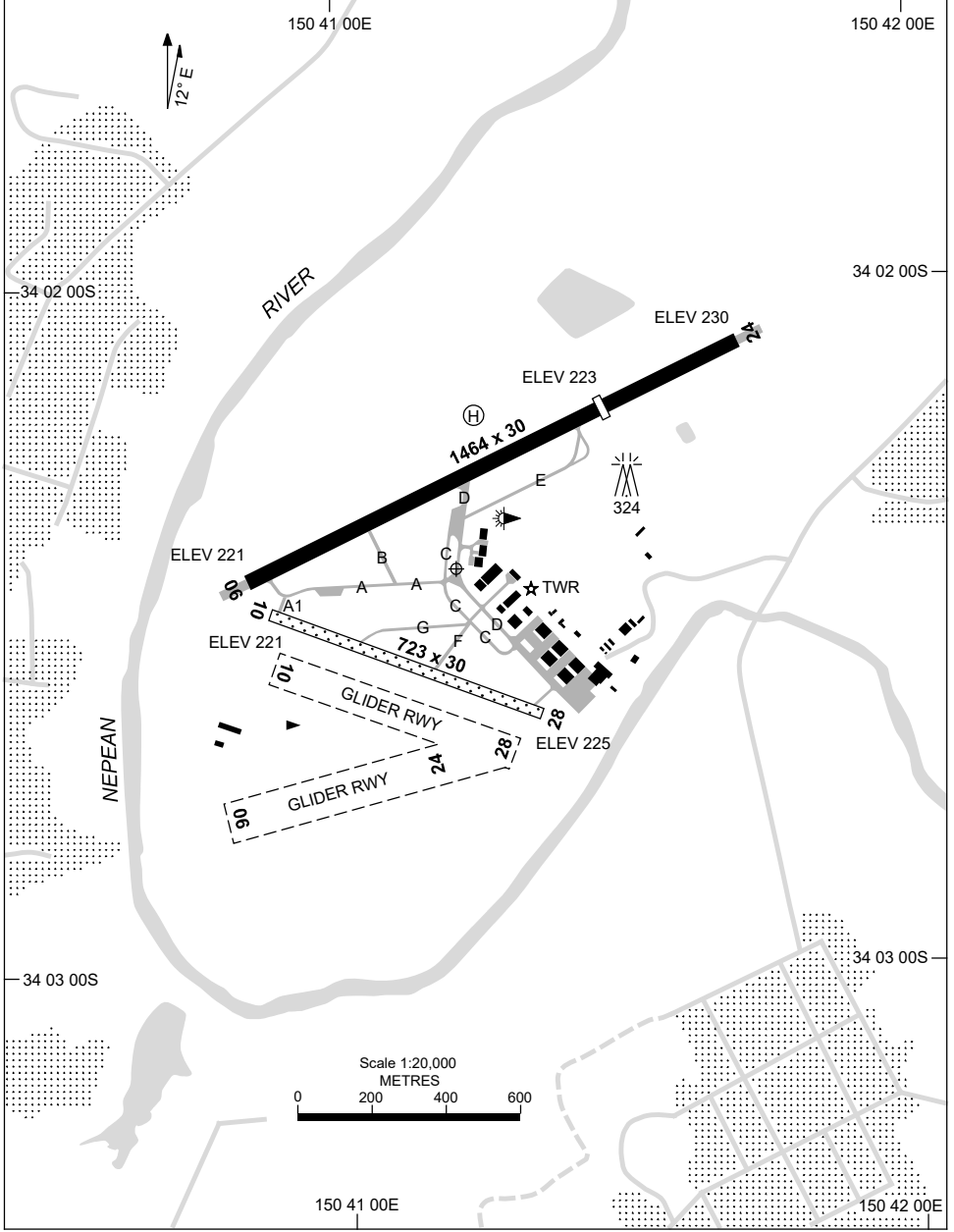


5 NOV 2020

ATIS/AWIS (AH) 125.1	SMC 121.9	TWR 120.1	FIA (AH) SY CEN 124.55	CTAF+AFRU (AH) 120.1	PAL 120.6	Bearings are Magnetic Elevations in FEET AMSL
-------------------------	--------------	--------------	---------------------------	-------------------------	--------------	--



Changes: Editorial.

SCNAD01-165

8 SEP 2022

AD ELEV 230  
34 02 25S 150 41 12E

AERODROME CHART - Page 2  
**CAMDEN, NSW (YSCN)**

ATIS/AWIS (AH) 125.1	SMC 121.9	TWR 120.1	FIA (AH) SY CEN 124.55	CTAF+AFRU (AH) 120.1	PAL 120.6	Bearings are Magnetic Elevations in FEET AMSL
-------------------------	--------------	--------------	---------------------------	-------------------------	--------------	--

--	--	--	--	--	--	--

<b>AERODROME LIGHTING</b>	
<b>RWY</b>	ABN : FLG W 10 SEC TAXIWAY : BLUE EDGE RL : PAL 120.6 , SDBY (3 SEC)
<b>06</b> <small>052</small>	LIRL
<small>232</small> <b>24</b>	LIRL
<b>10</b> <small>098</small>	NIL
<small>278</small> <b>28</b>	NIL

<b>NOTES</b>

Changes: SDBY SWITCH TIME, NOTES.

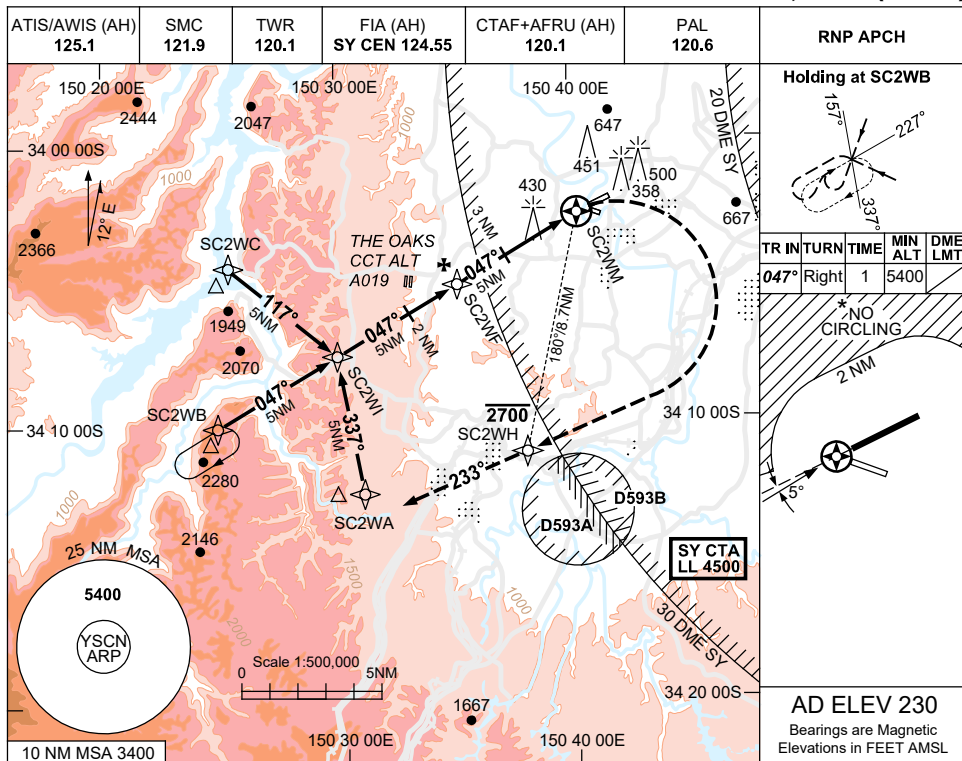
SCNAD02-172

USE QNH

RNP W

1 DEC 2022

**CAMDEN, NSW (YSCN)**



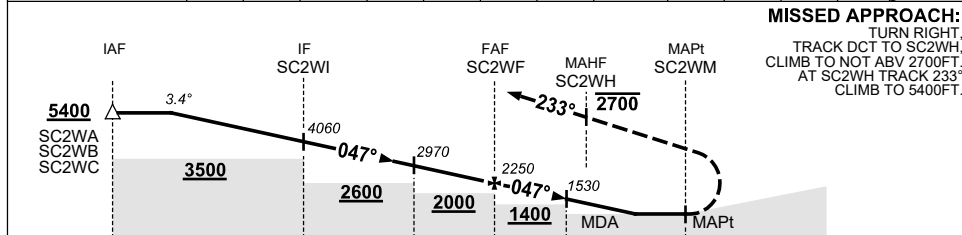
**Holding at SC2WB**

TR	IN	TURN	TIME	MIN	DME
047°	Right	1	5400	LMT	

**\*NO CIRCLING**

**AD ELEV 230**  
Bearings are Magnetic  
Elevations in FEET AMSL

NM TO NEXT WPT	3.7	2	SC2WI	4	3	2	1	SC2WF	4	3	2.8	1.7	SC2WWM
ALT(3.4° APCH PATH)	5400	4780	4060	3700	3340	2970	2610	2250	1890	1530	1480	1060	



**NOTES**

- MAX IAS:  
INITIAL : 210KT.  
MAP TURN: 195KT.
- \*2. NO CIRCLING NTH OF RWY 06/24 BEYOND 2NM.
- ACFT TO CALL CN TWR PRIOR TO SC2WI.
- TRAINING RESTR: SEE ERSA.
- COLOUR: SEE SPEC NOTICES.

CATEGORY	A	B	C	D
CIRCLING *	1060 (830-2.4)		1480(1250-4.0)	
ALTERNATE	(1330-4.4)		(1750-6.0)	

**NOT APPLICABLE**

Changes: WPT NAMING CONVENTION, MAP SPEED, MAHF ALT RESTRICTION, Editorial.

SCNGN01-173