

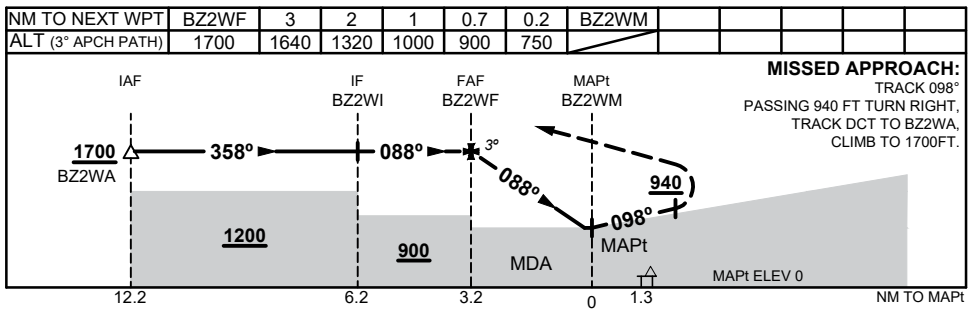
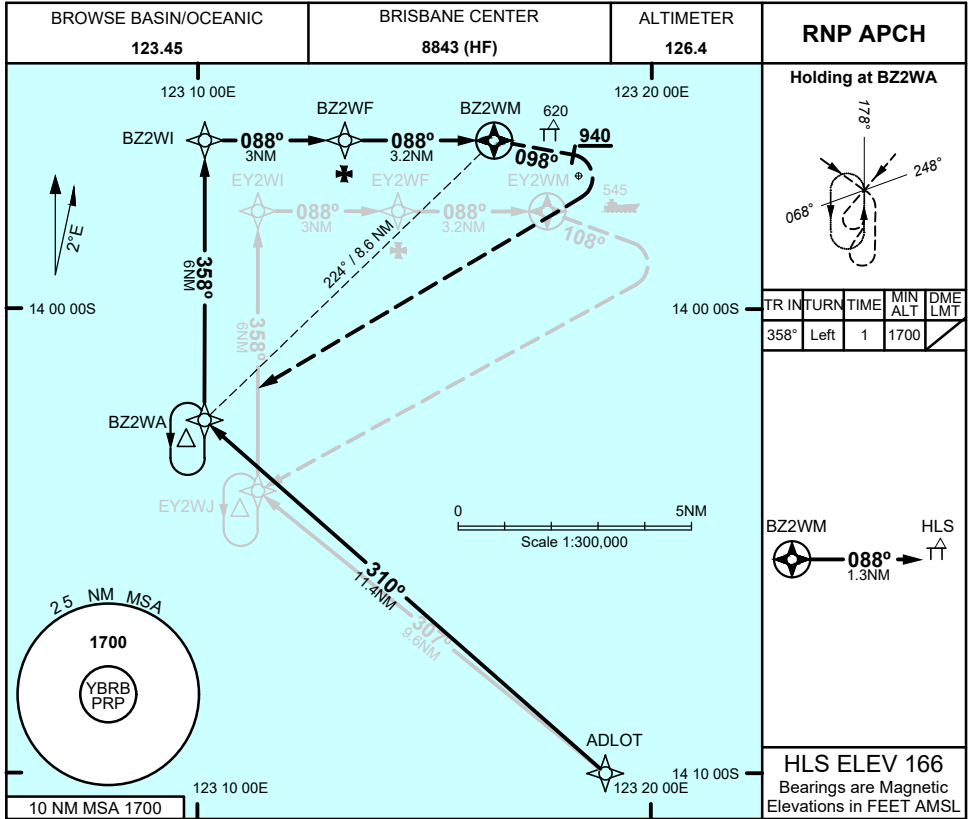
FOR CASA APPROVED OPERATORS ONLY

USE QNH

RNP Z 088

1 DEC 2022

BROWSE BASIN, WA (YBRB)



CATEGORY	H
YBRB QNH (NON-VAA)	750 (750 - 2.1)
AREA QNH (NON-VAA)	900 (900 - 2.1)
ALTERNATE	(1400 - 4.1)

- NOTES**
1. MAX IAS:
- HOLDING: 90 KT
 2. PRP (S13 57 09, E123 18 23)
 3. HLS (S13 56 23, E123 17 53)
 4. PRP EQUIVALENT TO ARP/HRP

Changes: LOGO, Editorial

BRBGN01-173

FOR CASA APPROVED OPERATORS ONLY



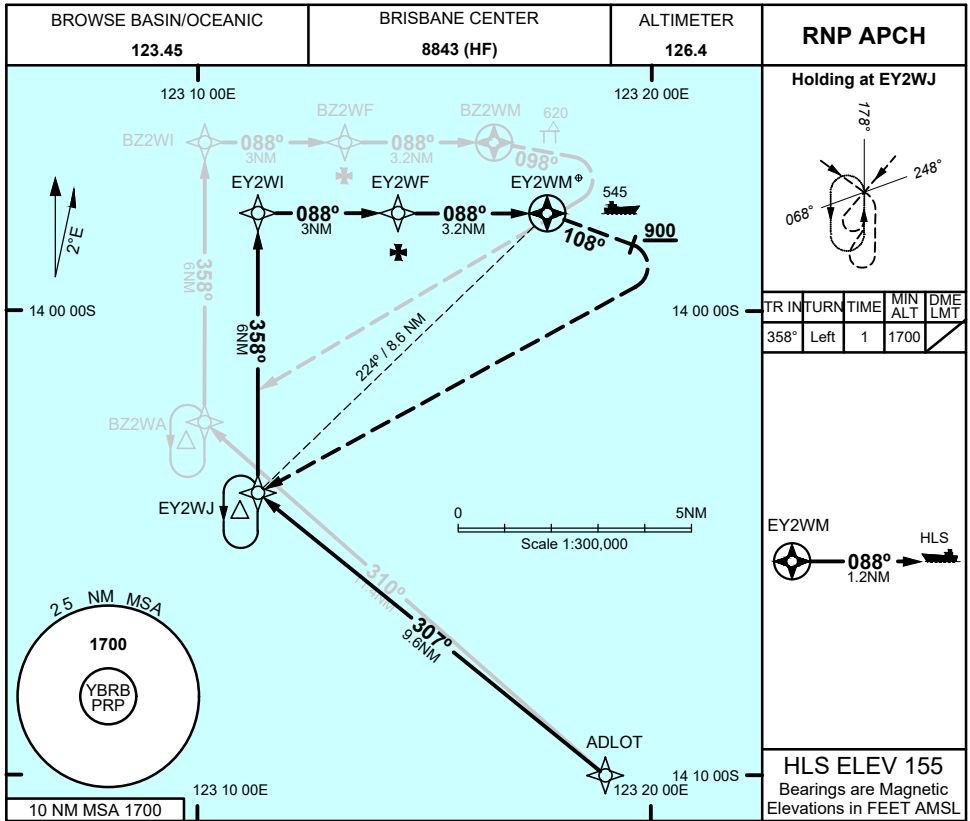
FOR CASA APPROVED OPERATORS ONLY

USE QNH

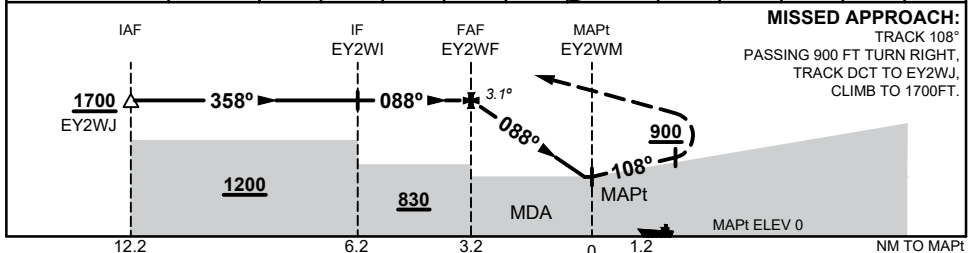
RNP Y 088

1 DEC 2022

BROWSE BASIN, WA (YBRB)



NM TO NEXT WPT	EY2WF	3	2	1	0.6	0.1	EY2WJ				
ALT (3.1° APCH PATH)	1700	1630	1310	980	830	680					



CATEGORY	H
YBRB QNH (NON-VAA)	680 (680 - 2.1)
AREA QNH (NON-VAA)	830 (830 - 2.1)
ALTERNATE	(1330 - 4.1)

- NOTES**
- MAX IAS:
- HOLDING: 90 KT
 - PRP (S13 57 09, E123 18 23)
 - HLS (S13 57 54, E123 18 54)
 - PRP EQUIVALENT TO ARP/HRP

Changes: LOGO, Editorial

BRBG02-173

FOR CASA APPROVED OPERATORS ONLY



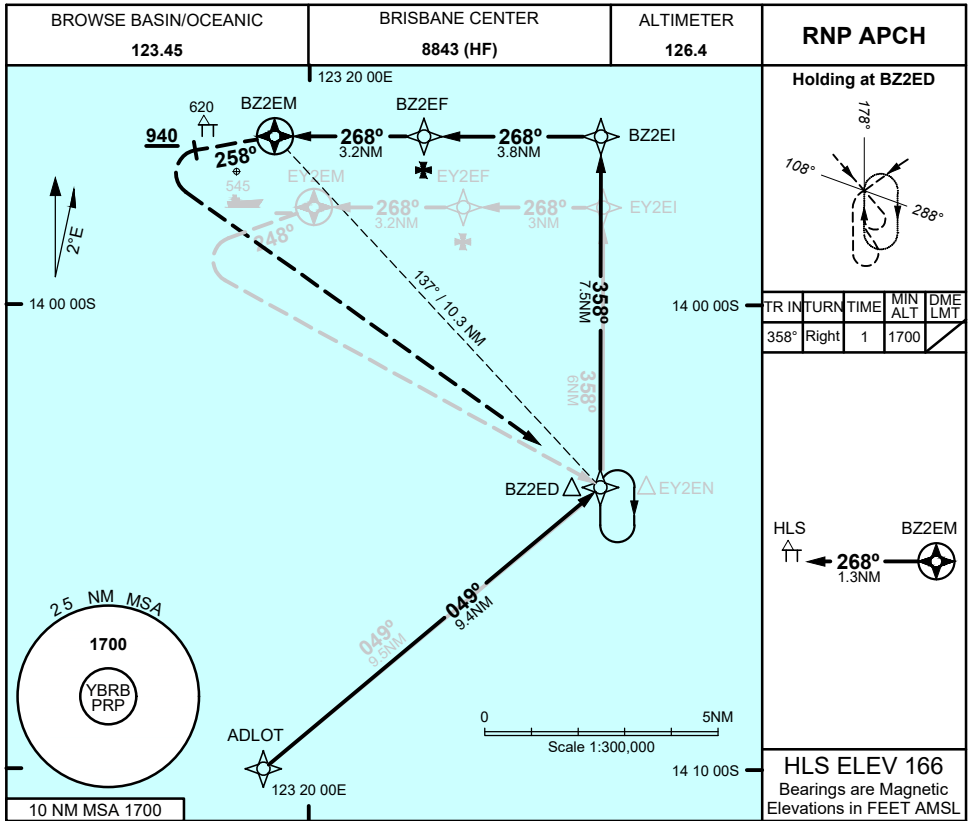
FOR CASA APPROVED OPERATORS ONLY

USE QNH

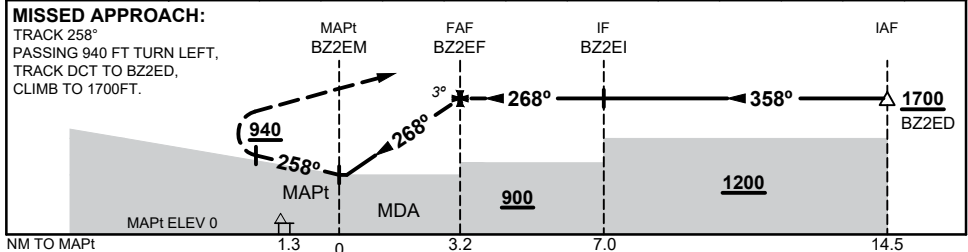
RNP Z 268

1 DEC 2022

BROWSE BASIN, WA (YBRB)



NM TO NEXT WPT	BZ2EM	0.2	0.7	1	2	3	BZ2EF				
ALT (3° APCH PATH)		750	900	1000	1320	1640	1700				



CATEGORY	H
YBRB QNH (NON-VAA)	750 (750 - 2.1)
AREA QNH (NON-VAA)	900 (900 - 2.1)
ALTERNATE	(1400 - 4.1)

- NOTES**
1. MAX IAS:
- HOLDING: 90 KT
 2. PRP (S13 57 09, E123 18 23)
 3. HLS (S13 56 23, E123 17 53)
 4. PRP EQUIVALENT TO ARP/HRP

Changes: LOGO, Editorial

BRBGN03-173

FOR CASA APPROVED OPERATORS ONLY



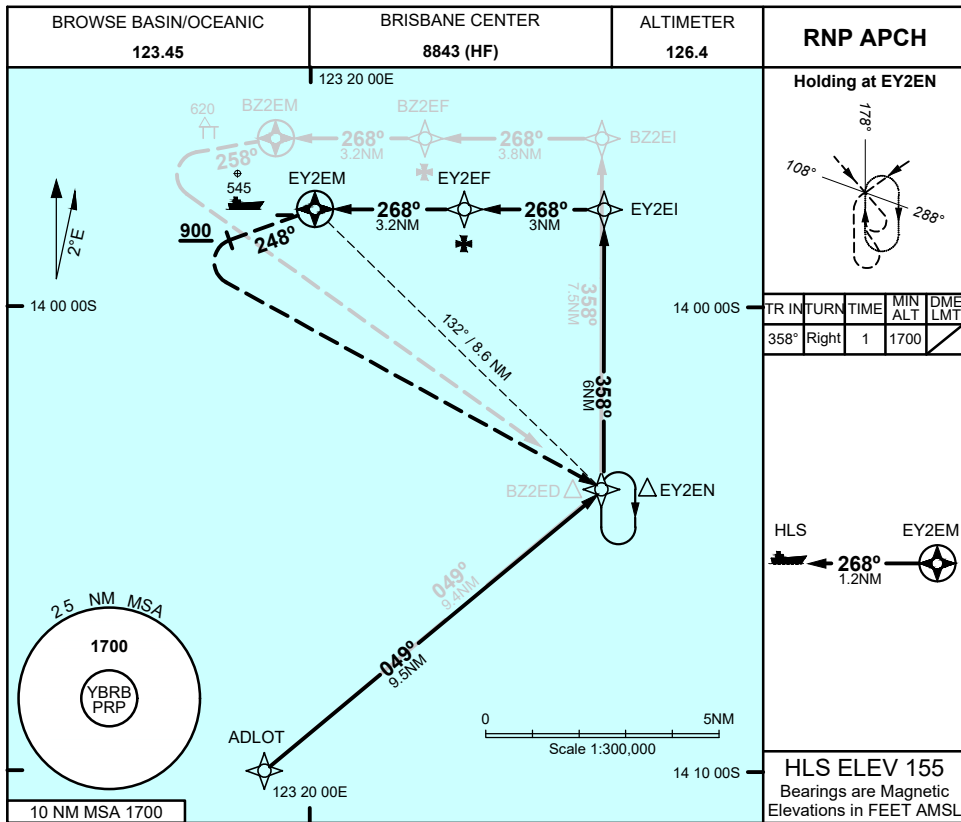
FOR CASA APPROVED OPERATORS ONLY

USE QNH

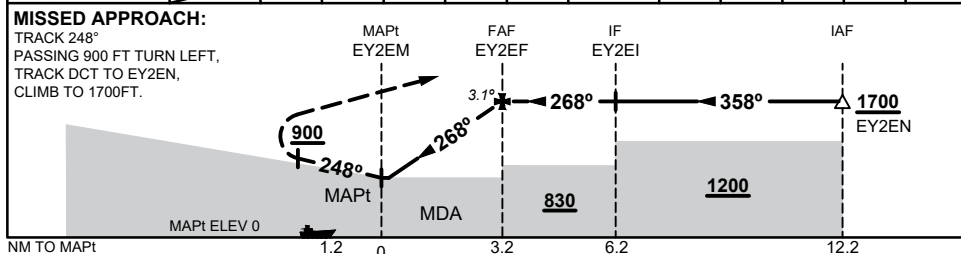
RNP Y 268

1 DEC 2022

BROWSE BASIN, WA (YBRB)



NM TO NEXT WPT	EY2EM	0.1	0.6	1	2	3	EY2EF			
ALT (3.1° APCH PATH)		680	830	980	1310	1630	1700			



CATEGORY	H
YBRB QNH (NON-VAA)	680 (750 - 2.1)
AREA QNH (NON-VAA)	830 (900 - 2.1)
ALTERNATE	(1400 - 4.1)

- NOTES**
- MAX IAS:
- HOLDING: 90 KT
 - PRP (S13 57 09, E123 18 23)
 - HLS (S13 57 54, E123 18 54)
 - PRP EQUIVALENT TO ARP/HRP

Changes: LOGO, Editorial

BRBG04-173

FOR CASA APPROVED OPERATORS ONLY

