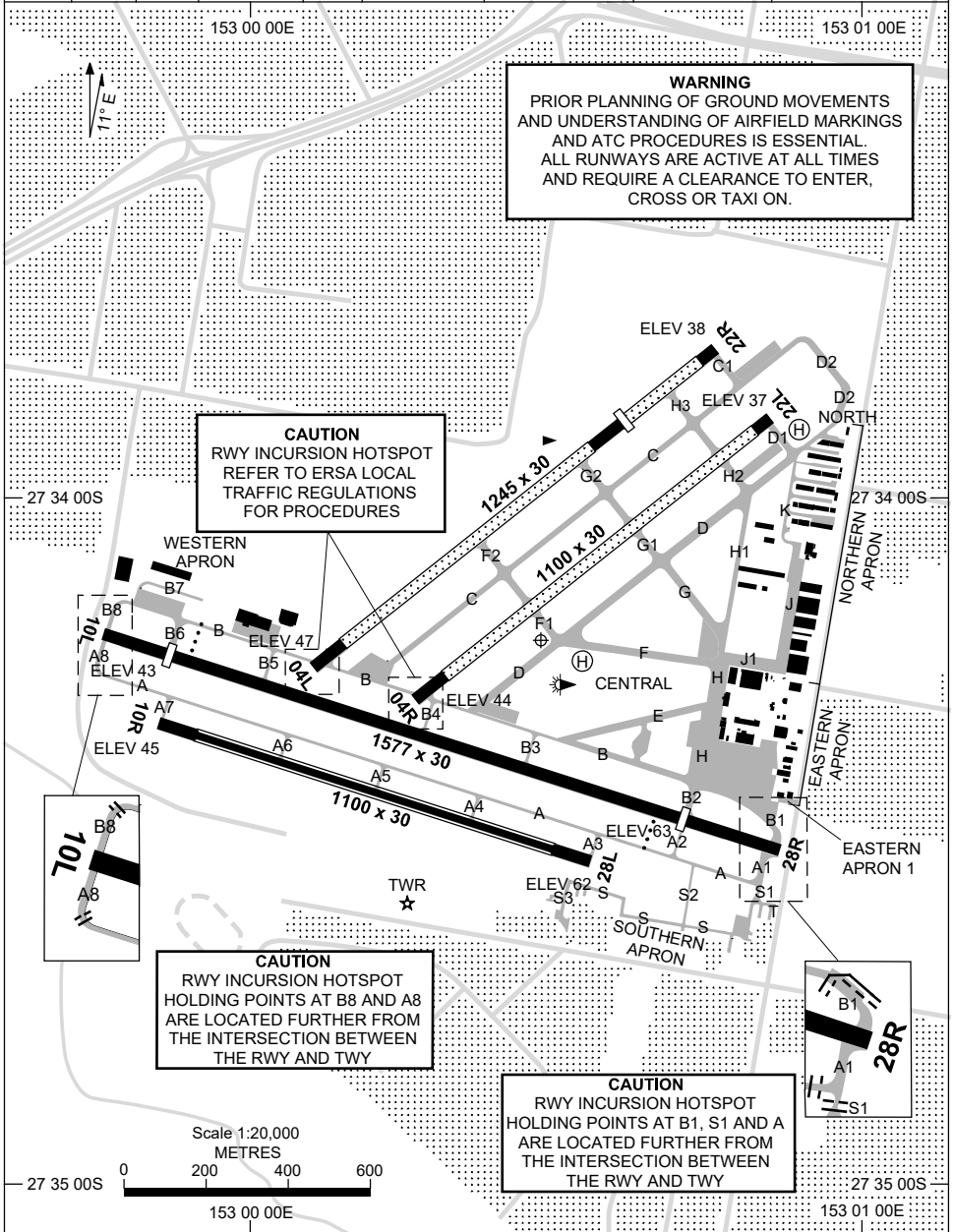


21 MAR 2024

27 34 13S 153 00 29E

BRISBANE/ARCHERFIELD, QLD (YBAF)

ATIS 120.9	AWIS 128.4	APP 125.6	TWR 118.1 123.6	SMC 119.9	FIA (AH) BN CEN 125.7	CTAF+AFRU (AH) 118.1	AFRU+PAL (AH) 118.1	Bearings are Magnetic Elevations in FEET AMSL
---------------	---------------	--------------	--------------------	--------------	--------------------------	-------------------------	------------------------	--



Changes: HOT SPOT ADDED, Editorial.

BAFAD01-178

8 SEP 2022

AD ELEV 65
27 34 13S 153 00 29E

AERODROME CHART - Page 2
BRISBANE/ARCHERFIELD, QLD (YBAF)

ATIS 120.9	AWIS 128.4	APP 125.6	TWR 118.1 123.6	SMC 119.9	FIA (AH) BN CEN 125.7	CTAF+AFRU (AH) 118.1	AFRU+PAL (AH) 118.1	Bearings are Magnetic Elevations in FEET AMSL
---------------	---------------	--------------	--------------------	--------------	--------------------------	-------------------------	------------------------	--

--	--	--	--	--	--	--	--	--

RWY	AERODROME LIGHTING							
		ABN : ALTN 6 W TAXIWAY : BLUE EDGE LGT ON TWY B , B1-B8, E AND H, EXC B4 AND B7. GREEN CL LGT ON INTERSECTION OF TWY B, B1, B2 AND H. RL : AFRU+PAL (AH) 118.1 , SDBY (15 SEC)						
10L 277	097 28R	PAPI 3.0° 42FT MIRL RTIL PAPI 3.0° 42FT MIRL RTIL						
04L 221	041 22R	NIL NIL						
10R 277	097 28L	NIL NIL						
04R 221	041 22L	NIL NIL						

<p>NOTES</p> <p>1. AWIS REQUIRES 1 SEC PULSE TO ACTIVATE. 2. PAPI AVBL ON REQ DURING TWR HR. ACTIVATED BY PAL OUTSIDE TWR HR.</p>								
---	--	--	--	--	--	--	--	--

Changes: TWY LIGHTING, NOTES

BAFAD02-172

**STANDARD INSTRUMENT DEPARTURES (SID)
ARCHERFIELD THREE DEPARTURE (RADAR) - RWY 10L & 28R
BRISBANE/ARCHERFIELD, QLD (YBAF)**

21 MAY 2020

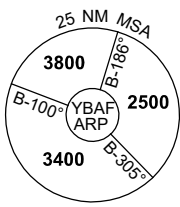
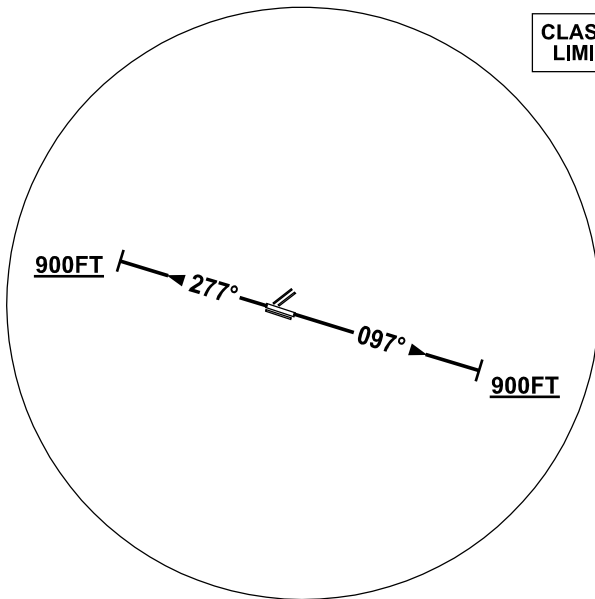
ATIS 120.9	AWIS 128.4	TWR 118.1 123.6	SMC 119.9	FIA (AH) BN CEN 125.7	CTAF+AFRU (AH) 118.1	AFRU+PAL (AH) 118.1	Bearings are Magnetic Elevations in FEET AMSL
---------------	---------------	--------------------	--------------	--------------------------	-------------------------	------------------------	--

WARNING: Part of these procedures are conducted outside controlled airspace.

NOT TO SCALE



**CLASS D SPEED
LIMITS APPLY**



10 NM MSA 2900

ARCHERFIELD THREE DEPARTURE (RADAR)

PROCEDURE NOT AVBL FROM RWY 10R / 28L

WARNING: Part of these procedures are conducted outside controlled airspace.

RWY 10L

- GRAD 3.3%
- Track 097°
- At 900FT BUT NOT BEFORE DER turn to assigned heading or track
- Contact Departures when advised by Tower

RWY 28R

- GRAD 4.3% to 1900FT thence 3.3%
- Track 277°
- At 900FT BUT NOT BEFORE DER turn to assigned heading or track
- Contact Departures when advised by Tower

COMMUNICATIONS FAILURE PROCEDURE

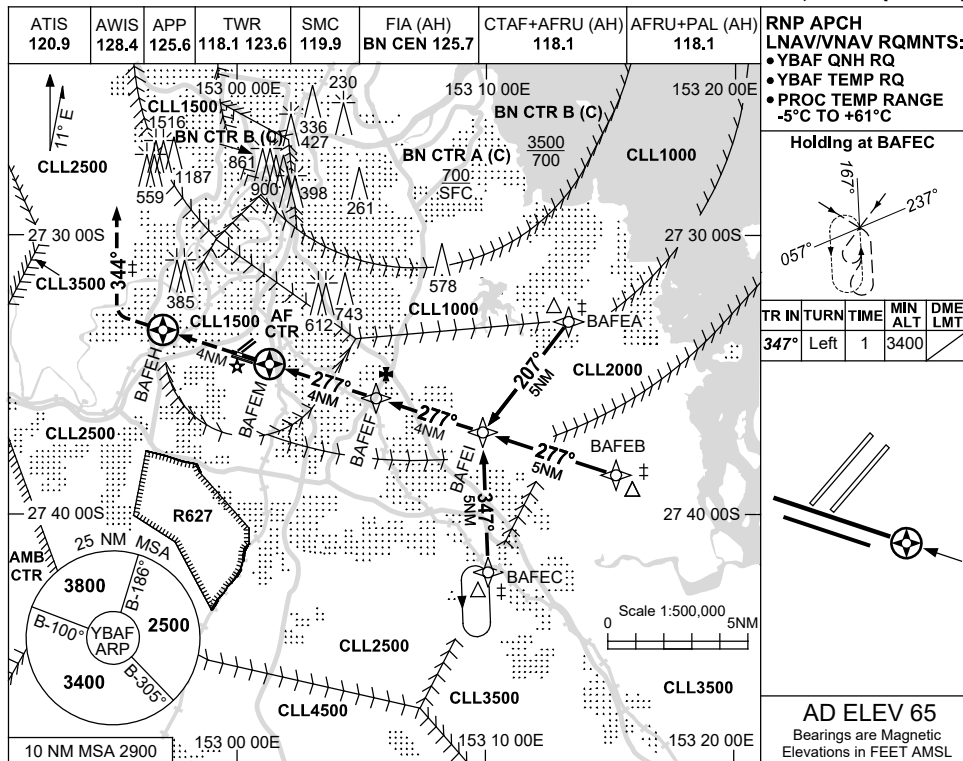
On recognition of communications failure

- Squawk 7600
- Climb on last heading to: 25 MSA (max IAS 180KT) or assigned altitude if higher than 25 MSA (max IAS standard climb IAS)
- Maintain altitude for 2 mins.
- Continue climb to flight plan altitude and proceed in accordance with Flight Plan (As amended by latest ATC clearance and acknowledged, if applicable)

USE QNH
BRISBANE/ARCHERFIELD, QLD (YBAF)

RNP RWY 28R

9 SEP 2021



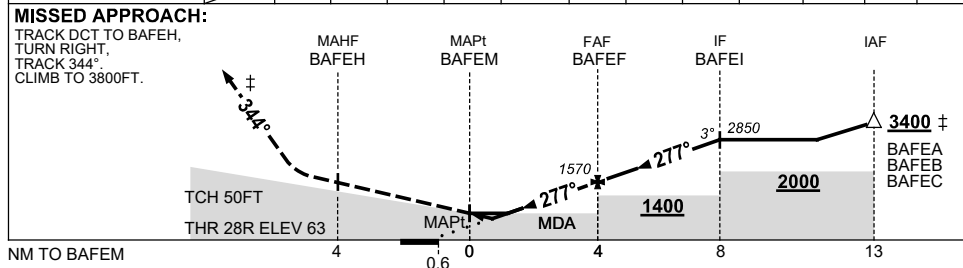
RNP APCH
LNAV/VNAV RQMTS:
• YBAF QNH RQ
• YBAF TEMP RQ
• PROC TEMP RANGE
-5°C TO +61°C

Holding at BAFEC

TR	IN	TURN	TIME	MIN ALT	DME LMT
347°	Left	1	3400		

AD ELEV 65
Bearings are Magnetic
Elevations in FEET AMSL

NM TO NEXT WPT	BAFEM	1.2	1.6	2	3	BAFEF	1	2	3	BAFEI		
ALT (3° APCH PATH)		680	810	940	1260	1570	1890	2210	2530	2850		



CATEGORY	A	B	C	D
LNAV/VNAV	680 (617-3.5)		NOT APPLICABLE	
LNAV	810 (745-4.3)			
CIRCLING	1010 (945-2.4)			
ALTERNATE	(1445-4.4)			

- NOTES**
- MAX IAS :
HOLDING: 150KT.
 - ± ATC CLR RQ FOR PROC.
 - PROC PARTIALLY OUTSIDE CONTROL AREA.

Changes: CHART TITLE, PBN SPECIFICATION BOX.

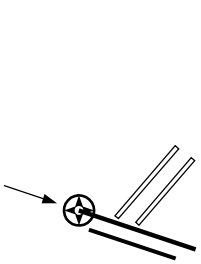
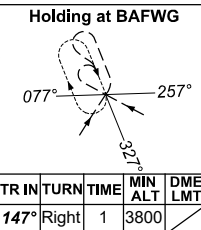
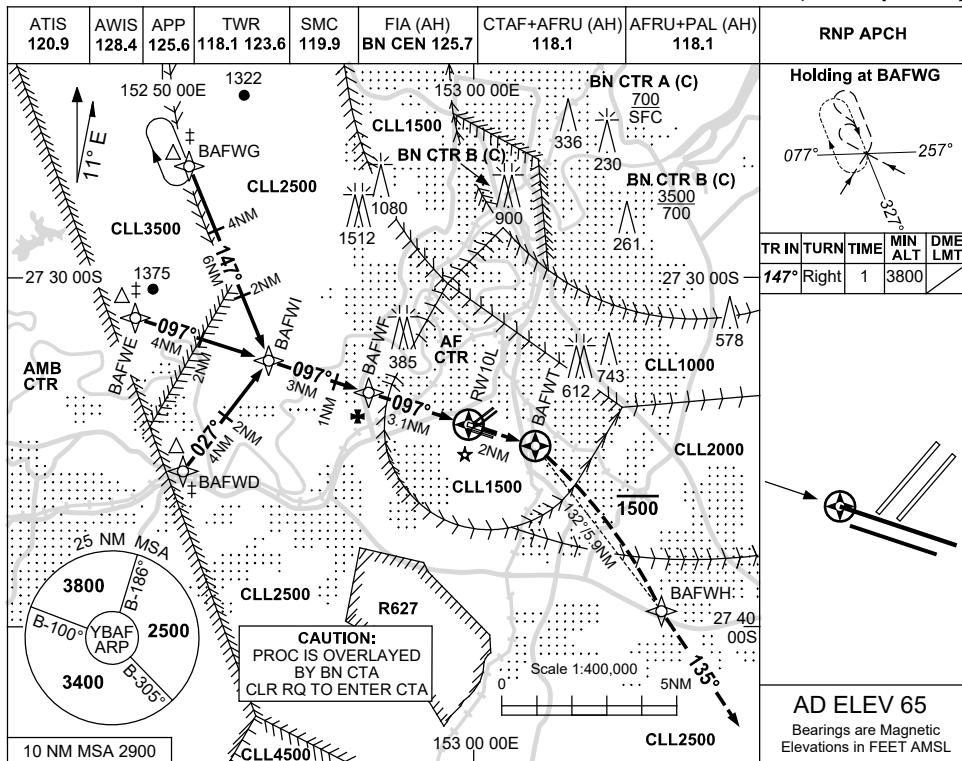
BAFGN01-168

USE QNH

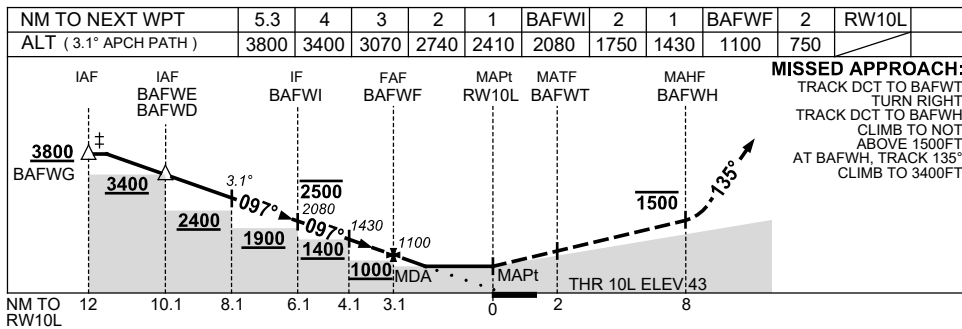
RNP Z RWY 10L

BRISBANE/ARCHERFIELD, QLD (YBAF)

24 MAR 2022



AD ELEV 65
Bearings are Magnetic
Elevations in FEET AMSL



MISSED APPROACH:
TRACK DCT TO BAFWI, TURN RIGHT,
TRACK DCT TO BAFWH,
CLIMB TO NOT ABOVE 1500FT,
AT BAFWH, TRACK 135°,
CLIMB TO 3400FT.

- NOTES**
- ‡ 1. ATC CLR RQ FOR PROC.
 - 2. PROC NOT FULLY CONTAINED IN CONTROLLED AIRSPACE.
 - 3. MAX IAS: INITIAL 160KTS, MAP TURN 160KTS

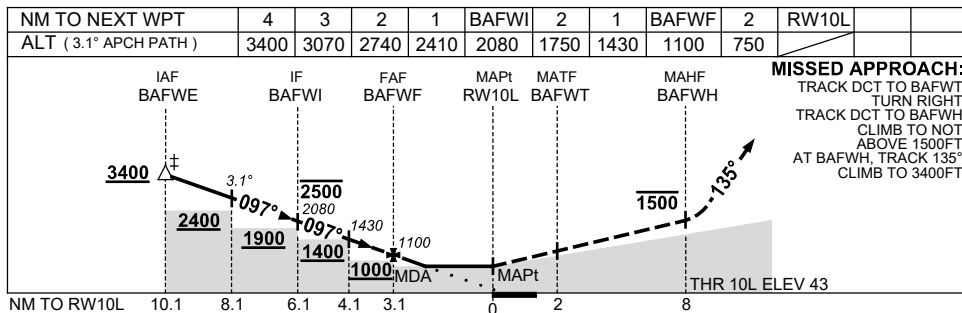
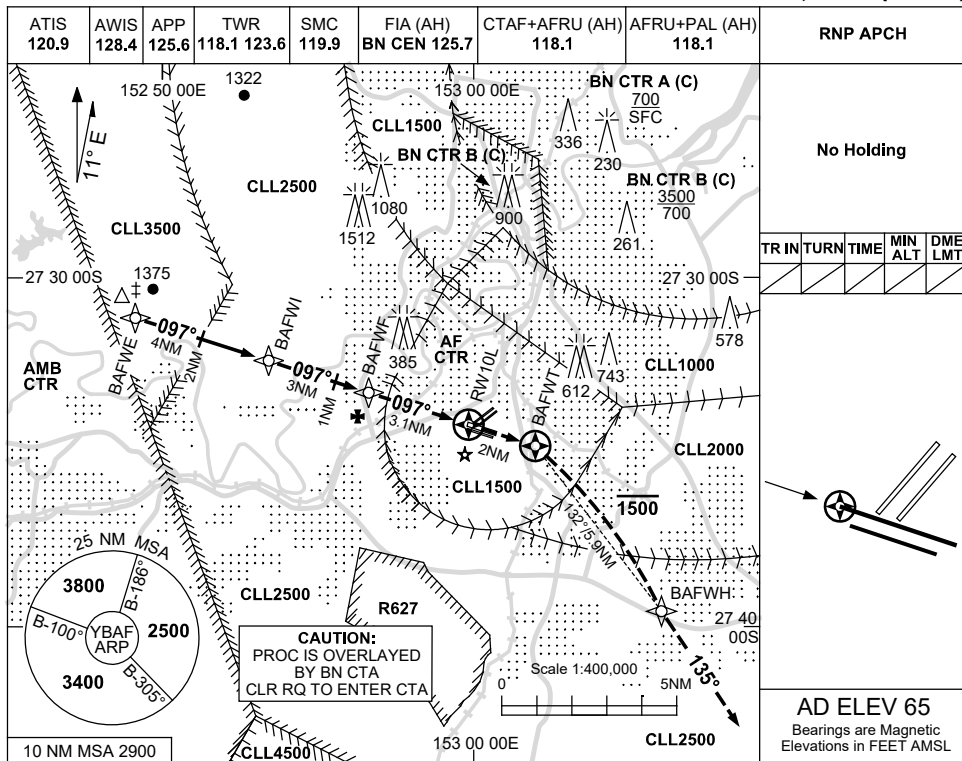
CATEGORY	A	B	C	D
LNAV	750 (707-4.0)		NOT APPLICABLE	
CIRCLING	1010 (945-2.4)			
ALTERNATE	(1445-4.4)			

Changes: PROC ALTITUDES

BAFGN02-170

USE QNH RNP Y RWY 10L
BRISBANE/ARCHERFIELD, QLD (YBAF)

24 MAR 2022



CATEGORY	A	B	C	D	NOTES
LNAV	NOT APPLICABLE			750 (707-4.0)	NOT APPLICABLE
CIRCLING				1240 (1175-4.0)	
ALTERNATE				(1675-6.0)	

† 1. ATC CLR RQ FOR PROC.
 2. PROC NOT FULLY CONTAINED IN CONTROLLED AIRSPACE.
 3. MAX IAS: MAP TURN 210KTS.

Changes: PROC ALTITUDES.

BAFGN03-170