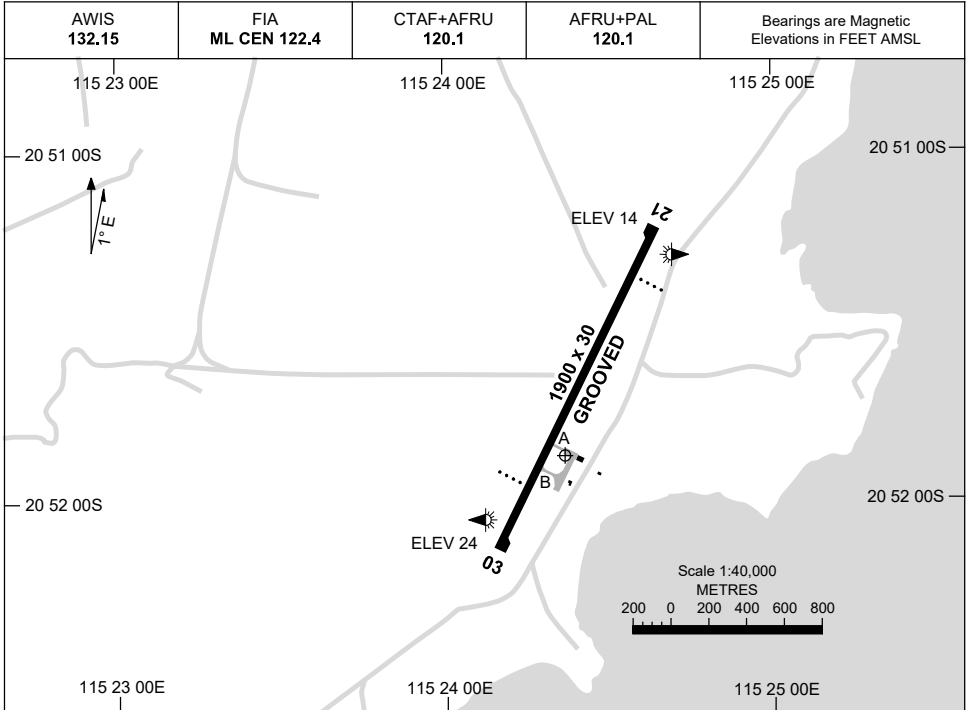


15 JUN 2023

AD ELEV 24  
20 51 52S 115 24 22E

AERODROME CHART  
**BARROW ISLAND, WA (YBWX)**



	<b>AERODROME LIGHTING</b>
<b>RWY</b>	TAXIWAY : BLUE EDGE ON TWY B RL : AFRU+PAL 120.1 , SDBY (25 SEC) , PTBL (90 MIN PN)
<b>03</b> <small>026</small>	PAPI 3.0° 41FT LIRL
<small>206</small> <b>21</b>	PAPI 3.0° 41FT LIRL

**NOTES**

1. FIA FREQ 122.4 AVBL 2,000FT.

Changes: NOTES.

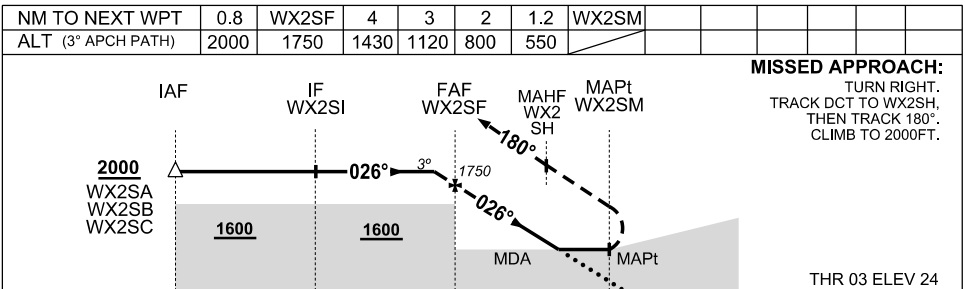
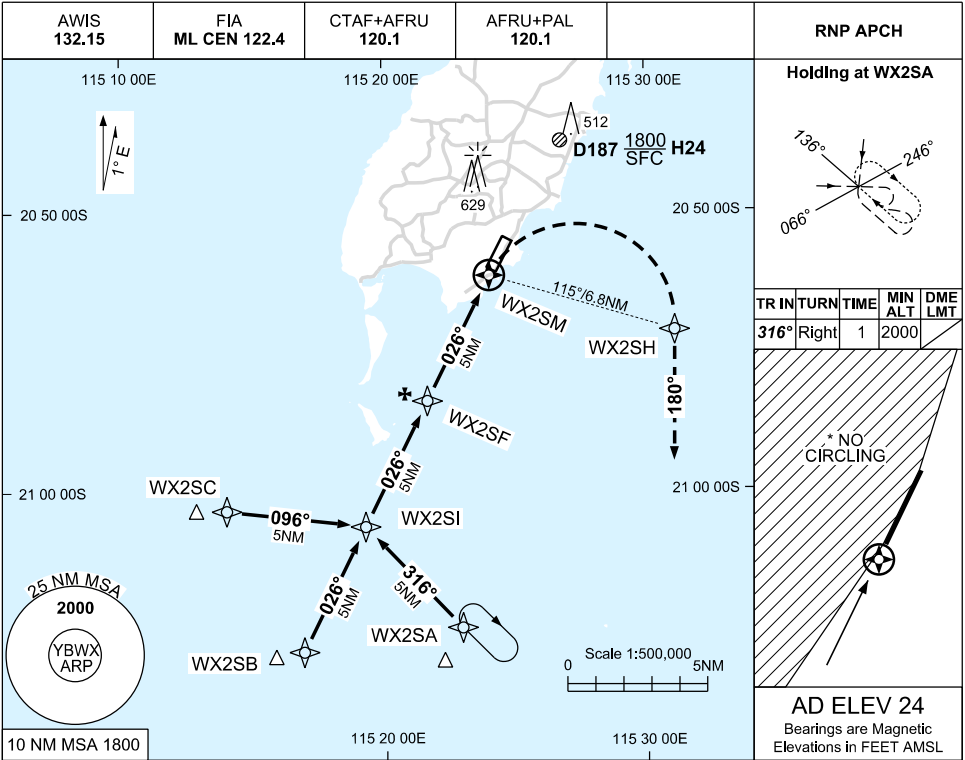
BWXAD01-175

USE QNH

RNP Z RWY 03

30 NOV 2023

BARROW ISLAND, WA (YBWX)



CATEGORY	A	B	C	D
LNAV	550 (526-3.0)			NOT AUTHORISED
CIRCLING *	630 (606-2.4)		NOT AUTHORISED	
ALTERNATE	(1106-4.4)		(1116-5.5)	

- NOTES**
- MAX IAS : INITIAL: 210KT MAP TURN: 210KT
  - \*2. NO CIRCLING WEST OF RWY 03/21.

Changes: CHART TITLE, WPT IDENT, EDITORIAL

BWXGN02-177

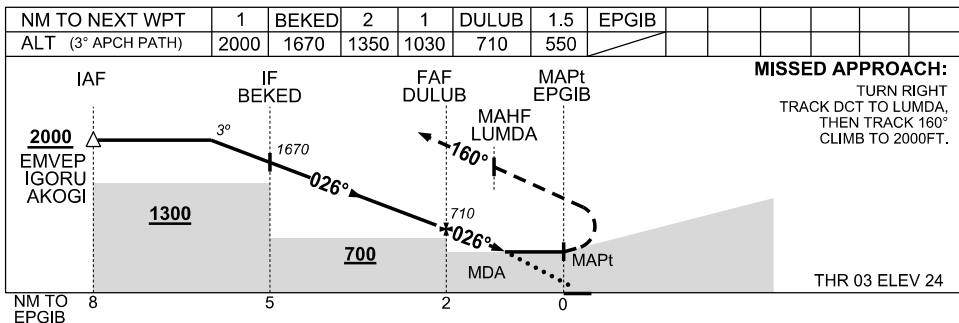
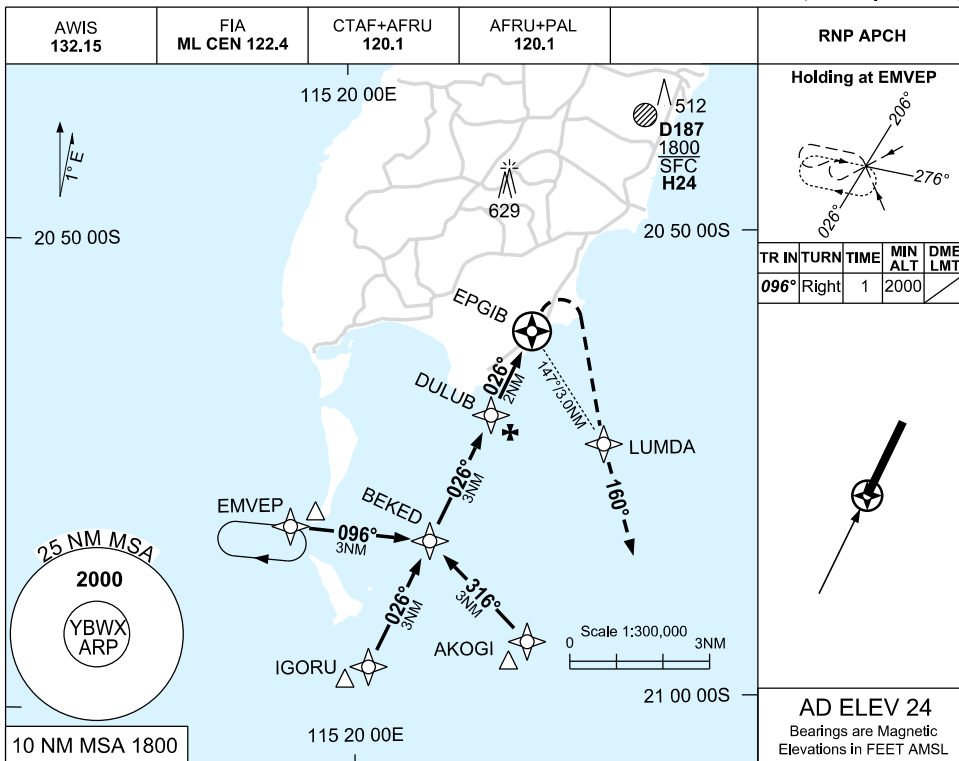


USE QNH

RNP Y RWY 03

30 NOV 2023

BARROW ISLAND, WA (YBWX)



**NOTES**

CATEGORY	H
LNAV (NON VAA)	<b>550 (526-3.0)</b>
CIRCLING	NOT APPLICABLE
ALTERNATE	(1106-5.4)

1. MAX IAS:  
HOLDING: 100KT.

Changes: CHART TITLE, EDITORIAL

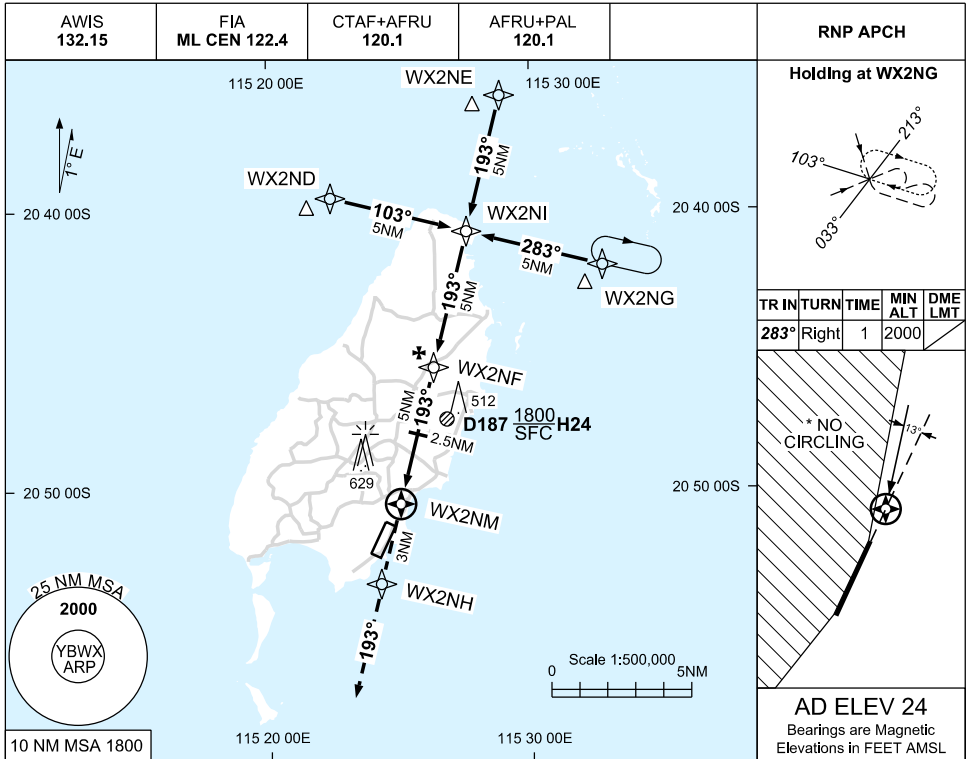
BWXGN03-177

USE QNH

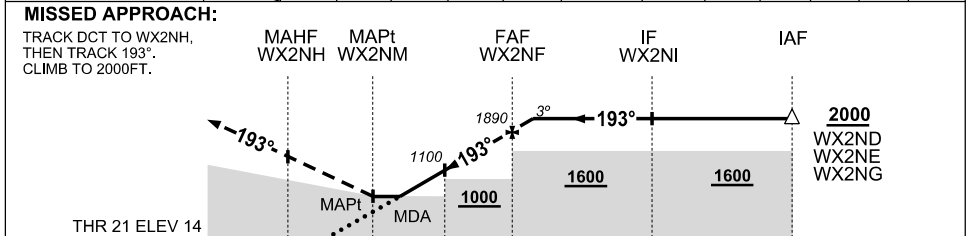
RNP Z RWY 21

30 NOV 2023

BARROW ISLAND, WA (YBWX)



NM TO NEXT WPT	WX2NM	1.0	2	2.5	3	4	WX2NF	0.3				
ALT (3° APCH PATH)		630	940	1100	1260	1570	1890	2000				



NM TO WX2NM	3	0.8	2.5	5	10	15
-------------	---	-----	-----	---	----	----

**NOTES**

CATEGORY	A	B	C	D
LNAV	<b>630 (616-3.5)</b>			NOT AUTHORISED
CIRCLING *	<b>630 (606-2.4)</b>		NOT AUTHORISED	
ALTERNATE	<b>(1106-4.4)</b>		<b>(1116-5.5)</b>	

1. MAX IAS HOLDING: 210KT.
- \*2. NO CIRCLING WEST OF RWY 03/21.

Changes: CHART TITLE, WPT IDENT, EDITORIAL

BWXGN04-177

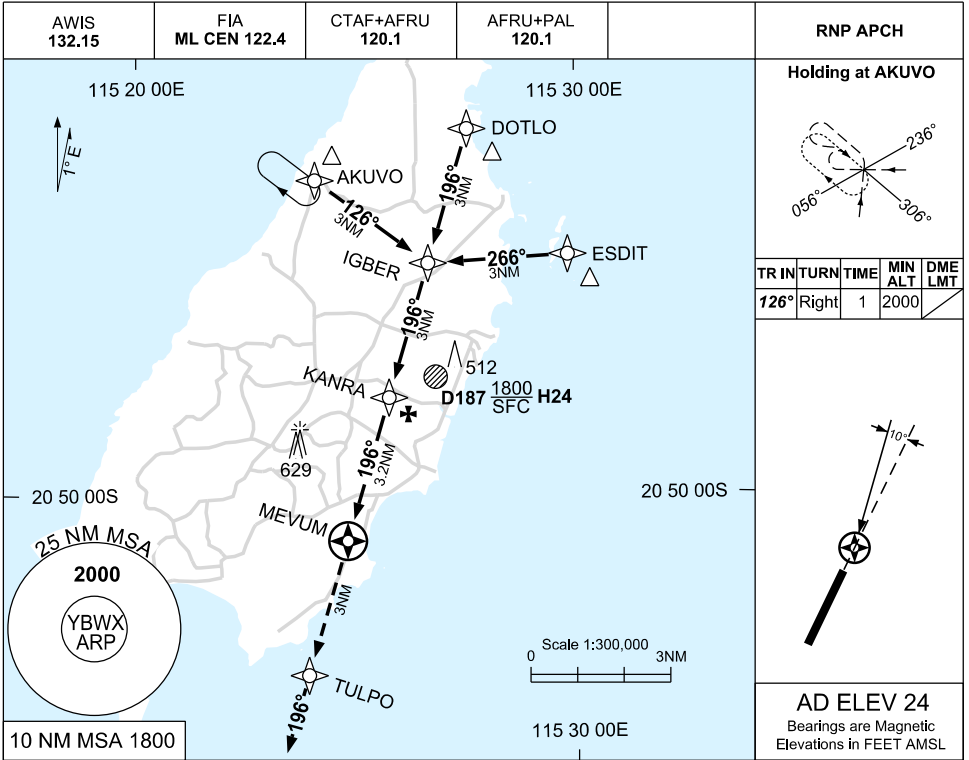


USE QNH

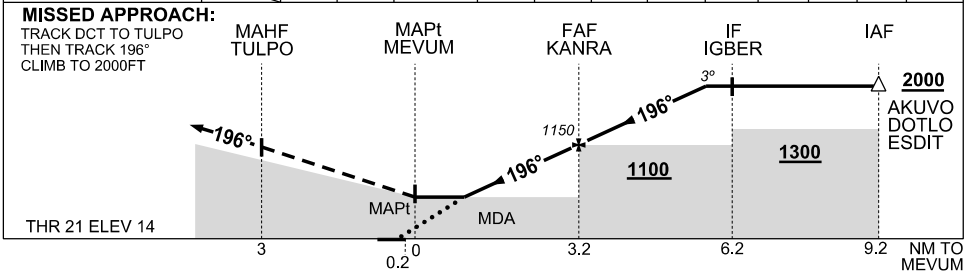
RNP Y RWY 21

30 NOV 2023

BARROW ISLAND, WA (YBWX)



NM TO NEXT WPT	MEVUM	1.5	2	KANRA	1	2	2.7						
ALT (3° APCH PATH)		620	770	1150	1470	1790	2000						



**NOTES**

CATEGORY	H
LNAV (NON VAA)	<b>620</b> (606-3.4)
CIRCLING	NOT APPLICABLE
ALTERNATE	(1106-5.4)

1. MAX IAS:  
HOLDING: 100KT.

Changes: CHART TITLE, EDITORIAL

BWXGN05-177